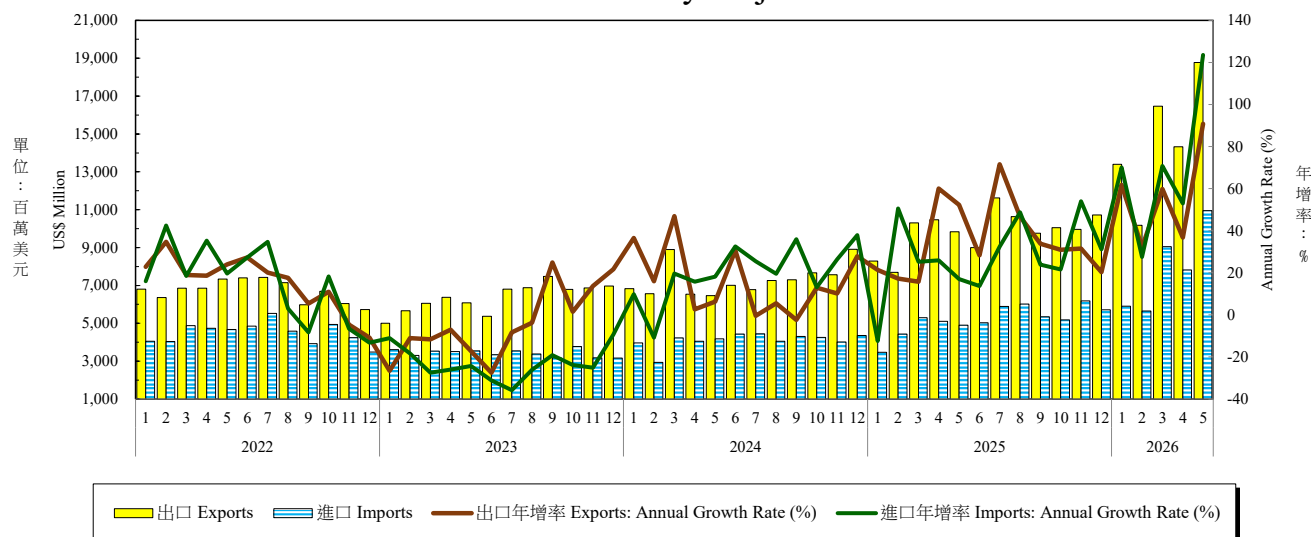


表九：臺灣對東協之進出口狀況

Table 9. External Trade by Major Area: ASEAN



年與月 Year & Month	出口 Exports			進口 Imports			貿易收支 (百萬元) Trade Balance (US\$ Million)	總貿易額 Total Trade	
	金額 (百萬元) Amount (US\$ Million)	年增率 Annual Growth Rate (%)	占比 Share (%)	金額 (百萬元) Amount (US\$ Million)	年增率 Annual Growth Rate (%)	占比 Share (%)		金額 (百萬元) Amount (US\$ Million)	年增率 Annual Growth Rate (%)
2016	51,249	-0.66	18.36	27,179	-6.38	11.86	24,069	78,428	-2.72
2017	58,520	14.19	18.55	31,000	14.06	12.05	27,519	89,520	14.14
2018	58,128	-0.67	17.40	34,549	11.45	12.13	23,579	92,677	3.53
2019	53,952	-7.18	16.39	34,966	1.21	12.24	18,986	88,918	-4.06
2020	53,225	-1.35	15.42	35,901	2.68	12.55	17,324	89,126	0.23
2021	70,256	32.00	15.74	47,233	31.56	12.37	23,022	117,489	31.82
2022	80,628	14.76	16.82	53,938	14.19	12.60	26,690	134,565	14.53
2023	76,320	-5.34	17.65	41,032	-23.93	11.67	35,288	117,352	-12.79
2024	87,777	15.01	18.48	49,243	20.01	12.49	38,533	137,020	16.76
2025	118,332	34.81	18.49	62,571	27.07	12.94	55,761	180,904	32.03
2024 1	6,825	36.59	18.41	3,963	9.86	11.46	2,863	10,788	25.39
2024 2	6,564	15.98	20.89	2,942	-10.88	12.51	3,623	9,506	6.09
2024 3	8,902	46.92	21.30	4,230	19.70	12.77	4,672	13,131	36.89
2024 4	6,538	2.66	17.46	4,056	15.74	13.07	2,483	10,594	7.30
2024 5	6,460	6.26	17.31	4,181	18.14	13.34	2,278	10,641	10.63
2024 6	7,010	30.65	17.58	4,429	32.60	12.58	2,581	11,439	31.40
2024 7	6,776	-0.46	16.97	4,449	25.45	12.66	2,327	11,224	8.41
2024 8	7,254	5.46	16.63	4,047	19.58	12.58	3,207	11,301	10.12
2024 9	7,297	-2.42	18.00	4,310	35.95	12.88	2,987	11,607	9.00
2024 10	7,670	12.93	18.58	4,260	13.10	12.45	3,409	11,930	12.99
2024 11	7,568	10.22	18.43	4,019	26.39	12.14	3,549	11,587	15.34
2024 12	8,913	27.87	20.46	4,359	37.95	11.64	4,554	13,272	31.02
2025 1	8,283	21.37	21.40	3,472	-12.38	12.12	4,811	11,756	8.97
2025 2	7,697	17.26	18.64	4,430	50.61	12.78	3,267	12,128	27.58
2025 3	10,302	15.73	20.79	5,295	25.19	12.43	5,007	15,597	18.78
2025 4	10,466	60.07	21.51	5,108	25.94	12.39	5,358	15,574	47.00
2025 5	9,838	52.30	19.02	4,896	17.08	12.52	4,942	14,734	38.46
2025 6	8,992	28.28	16.86	5,034	13.66	12.20	3,958	14,026	22.62
2025 7	11,626	71.58	20.51	5,891	32.42	13.92	5,735	17,517	56.06
2025 8	10,638	46.65	18.21	6,019	48.73	14.45	4,619	16,657	47.40
2025 9	9,762	33.78	18.00	5,340	23.92	12.76	4,421	15,102	30.12
2025 10	10,044	30.96	16.50	5,181	21.61	13.22	4,863	15,225	27.62
2025 11	9,957	31.56	15.55	6,188	53.97	12.90	3,769	16,145	39.33
2025 12	10,727	20.35	17.17	5,718	31.17	13.29	5,009	16,444	23.90
2026 1	13,402	61.79	20.38	5,905	70.06	12.61	7,497	19,307	64.24
2026 2	10,173	32.17	20.43	5,648	27.48	15.25	4,526	15,821	30.45
2026 3	16,465	59.82	20.53	9,045	70.83	15.35	7,420	25,510	63.56
2026 4	14,319	36.82	21.18	7,812	52.94	14.66	6,508	22,131	42.11
2026 5	18,773	90.82	23.92	10,945	123.56	18.07	7,828	29,718	101.70
1-當月	73,133	56.98	21.39	39,354	69.63	15.34	33,778	112,487	61.18

資料來源：財政部統計處，「115年5月海關進出口貿易統計速報」。

說明：東協包括新加坡、馬來西亞、菲律賓、泰國、印尼、越南、汶萊、寮國、緬甸、東帝汶及柬埔寨。

Source：Department of Statistics, Ministry of Finance, "Summary of Exports and Imports for May 2026".

Note：「ASEAN」 refers to Singapore, Malaysia, Philippines, Thailand, Indonesia, Vietnam, Brunei, Laos, Myanmar and Cambodia.