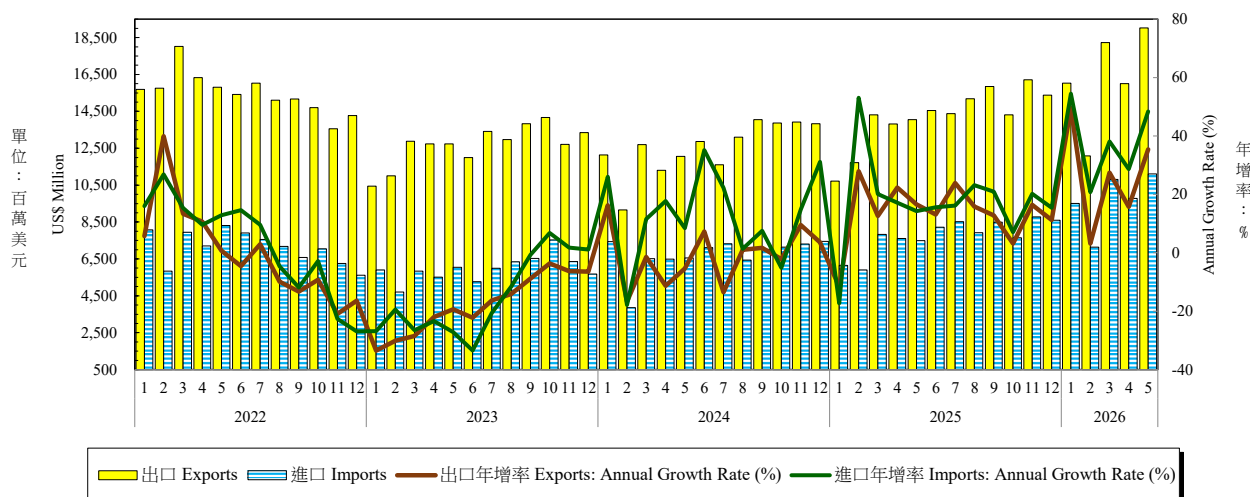


表十一：兩岸經貿

Table 11. External Trade by Major Country: China & Hong Kong



年與月 Year & Month	出口 Exports			進口 Imports			貿易收支 (百萬美元) Trade Balance (US\$ Million)	人民幣兌美元 匯率 Exchange Rate (RMB/USD)	中國大陸消費者 物價指數年增率 China's Consumer Price Index: Annual Growth Rate (%)
	金額 (百萬美元) Amount (US\$ Million)	年增率 Annual Growth Rate (%)	占比 Share (%)	金額 (百萬美元) Amount (US\$ Million)	年增率 Annual Growth Rate (%)	占比 Share (%)			
2016	111,986	-0.36	40.11	45,321	-3.02	19.77	66,665	6.64	2.01
2017	129,911	16.01	41.18	51,549	13.74	20.04	78,362	6.76	1.55
2018	137,899	6.15	41.29	55,199	7.08	19.38	82,700	6.62	2.11
2019	132,115	-4.19	40.14	58,457	5.90	20.46	73,658	6.91	2.90
2020	151,381	14.58	43.86	64,808	10.87	22.65	86,573	6.90	2.48
2021	188,875	24.77	42.31	84,194	29.91	22.04	104,681	6.45	0.91
2022	185,875	-1.59	38.77	85,508	1.56	19.97	100,367	6.74	1.96
2023	152,239	-18.10	35.21	71,718	-16.13	20.40	80,521	7.08	0.24
2024	150,589	-1.08	31.71	80,651	12.46	20.45	69,937	7.20	0.24
2025	170,462	13.20	26.64	93,134	15.48	19.26	77,328	7.19	0.05
2024 1	12,135	16.24	32.72	7,443	25.99	21.52	4,692	7.17	-0.80
2024 2	9,162	-16.74	29.16	3,861	-17.92	16.42	5,302	7.19	0.70
2024 3	12,702	-1.42	30.39	6,515	11.58	19.67	6,186	7.20	0.10
2024 4	11,300	-11.27	30.18	6,493	17.69	20.92	4,807	7.24	0.30
2024 5	12,056	-5.36	32.31	6,557	8.39	20.92	5,499	7.23	0.30
2024 6	12,865	7.31	32.26	7,115	35.15	20.21	5,749	7.26	0.20
2024 7	11,599	-13.55	29.06	7,327	22.23	20.85	4,272	7.26	0.50
2024 8	13,106	1.00	30.04	6,431	1.33	19.99	6,674	7.15	0.60
2024 9	14,051	1.65	34.65	7,018	7.48	20.98	7,033	7.08	0.40
2024 10	13,870	-2.14	33.60	7,139	-5.16	20.86	6,731	7.10	0.30
2024 11	13,917	9.53	33.89	7,304	14.87	22.07	6,613	7.20	0.20
2024 12	13,825	3.55	31.74	7,447	31.13	19.88	6,378	7.28	0.10
2025 1	10,712	-11.73	27.68	6,156	-17.30	21.49	4,556	7.31	0.50
2025 2	11,716	27.87	28.37	5,909	53.04	17.05	5,808	7.28	-0.70
2025 3	14,307	12.64	28.88	7,823	20.08	18.36	6,483	7.25	-0.10
2025 4	13,823	22.32	28.41	7,604	17.11	18.44	6,219	7.30	-0.10
2025 5	14,055	16.58	27.17	7,491	14.25	19.15	6,564	7.21	-0.10
2025 6	14,551	13.11	27.29	8,223	15.56	19.93	6,328	7.18	0.10
2025 7	14,370	23.89	25.36	8,514	16.19	20.12	5,857	7.17	0.00
2025 8	15,183	15.85	25.99	7,917	23.10	19.01	7,266	7.17	-0.40
2025 9	15,852	12.81	29.23	8,486	20.92	20.28	7,365	7.12	-0.30
2025 10	14,308	3.15	23.50	7,642	7.06	19.49	6,665	7.12	0.20
2025 11	16,205	16.44	25.30	8,776	20.15	18.30	7,429	7.11	0.70
2025 12	15,381	11.25	24.62	8,592	15.39	19.97	6,789	7.04	0.80
2026 1	16,024	49.58	24.37	9,509	54.46	20.30	6,515	6.97	0.20
2026 2	12,088	3.17	24.28	7,135	20.76	19.27	4,952	6.91	1.30
2026 3	18,229	27.41	22.73	10,806	38.12	18.34	7,423	6.90	1.00
2026 4	16,001	15.76	23.66	9,780	28.61	18.36	6,221	6.83	1.20
2026 5	19,029	35.39	24.25	11,115	48.38	18.35	7,914	6.80	1.20
1-當月	81,369	25.93	23.80	48,345	38.20	18.84	33,024	6.88	0.98

資料來源：財政部統計處，「115年5月海關進出口貿易統計速報」；中央銀行，「金融統計月報」；中國大陸國家統計局。

Source: Department of Statistics, Ministry of Finance, "Summary of Exports and Imports for May 2026".

Central Bank of Republic of China (Taiwan), "Financial Statistics Monthly, Republic of China (Taiwan)".

National Bureau of Statistics of China, "Consumer Prices for May 2026".

Central Bank of Republic of China (Taiwan); National Bureau of Statistics of China.