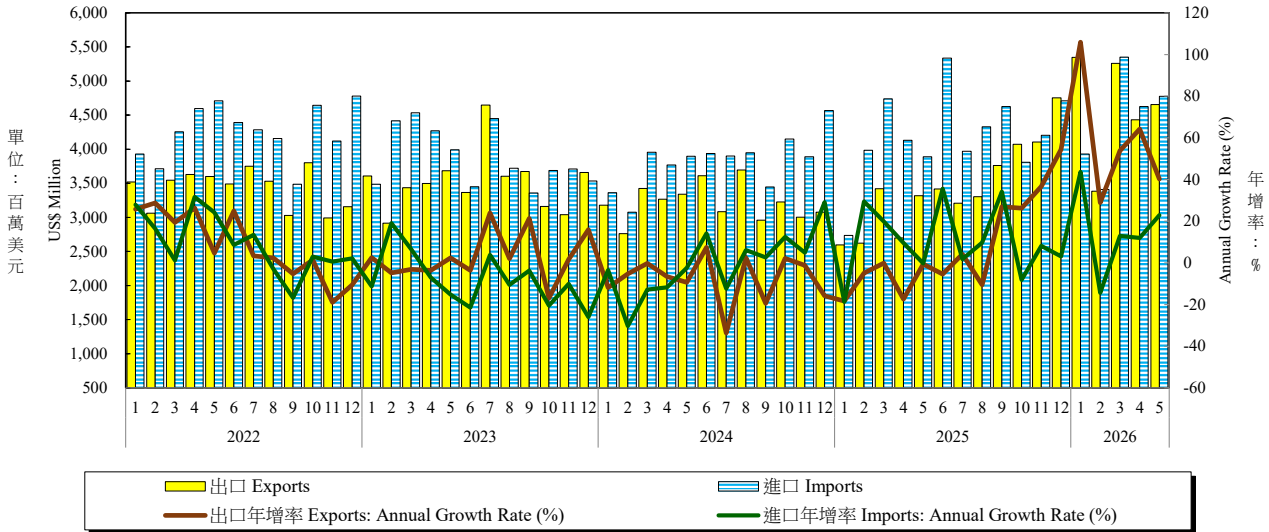


表十：臺灣對歐洲之進出口狀況

Table 10. External Trade by Major Area: Europe



年與月 Year & Month	出口 Exports			進口 Imports			貿易收支 Trade Balance (百萬元) (US\$ Million)	總貿易額 Total Trade	
	金額 (百萬元) Amount (US\$ Million)	年增率 Annual Growth Rate (%)	占比 Share (%)	金額 (百萬元) Amount (US\$ Million)	年增率 Annual Growth Rate (%)	占比 Share (%)		金額 (百萬元) Amount (US\$ Million)	年增率 Annual Growth Rate (%)
2016	26,124	0.98	9.36	28,892	1.41	12.61	-2,769	55,016	1.21
2017	28,778	10.16	9.12	31,315	8.39	12.18	-2,537	60,093	9.23
2018	31,278	8.69	9.36	34,580	10.43	12.14	-3,303	65,858	9.59
2019	29,770	-4.82	9.04	36,530	5.64	12.79	-6,760	66,301	0.67
2020	28,143	-5.47	8.15	36,797	0.73	12.86	-8,654	64,940	-2.05
2021	38,484	36.74	8.62	47,331	28.63	12.39	-8,847	85,815	32.15
2022	41,099	6.79	8.57	51,072	7.90	11.93	-9,973	92,171	7.41
2023	42,283	2.88	9.78	46,606	-8.74	13.25	-4,323	88,890	-3.56
2024	38,629	-8.64	8.13	45,897	-1.52	11.64	-7,268	84,526	-4.91
2025	41,276	6.85	6.45	50,458	9.94	10.44	-9,182	91,734	8.53
2024 1	3,179	-11.89	8.57	3,364	-3.49	9.73	-184	6,543	-7.76
2024 2	2,761	-5.25	8.79	3,076	-30.34	13.08	-316	5,837	-20.37
2024 3	3,424	-0.28	8.19	3,954	-12.79	11.94	-530	7,378	-7.40
2024 4	3,268	-6.57	8.73	3,770	-11.71	12.15	-502	7,038	-9.40
2024 5	3,341	-9.33	8.95	3,898	-2.38	12.44	-558	7,239	-5.71
2024 6	3,613	7.40	9.06	3,936	14.12	11.18	-324	7,549	10.80
2024 7	3,082	-33.69	7.72	3,900	-12.32	11.10	-818	6,982	-23.24
2024 8	3,695	2.55	8.47	3,948	6.15	12.27	-253	7,642	4.38
2024 9	2,960	-19.41	7.30	3,447	2.62	10.30	-486	6,407	-8.89
2024 10	3,227	2.09	7.82	4,149	12.47	12.12	-922	7,375	7.68
2024 11	3,002	-1.23	7.31	3,890	4.90	11.75	-887	6,892	2.14
2024 12	3,078	-15.87	7.07	4,566	29.14	12.19	-1,488	7,644	6.25
2025 1	2,597	-18.30	6.71	2,736	-18.67	9.55	-138	5,333	-18.49
2025 2	2,624	-4.95	6.35	3,984	29.49	11.49	-1,360	6,608	13.20
2025 3	3,420	-0.11	6.90	4,738	19.83	11.12	-1,318	8,159	10.58
2025 4	2,699	-17.43	5.55	4,130	9.55	10.02	-1,431	6,829	-2.98
2025 5	3,320	-0.62	6.42	3,888	-0.26	9.94	-568	7,208	-0.43
2025 6	3,417	-5.41	6.41	5,335	35.53	12.93	-1,918	8,752	15.94
2025 7	3,209	4.12	5.66	3,970	1.79	9.38	-761	7,179	2.82
2025 8	3,303	-10.60	5.65	4,329	9.65	10.39	-1,026	7,632	-0.14
2025 9	3,760	27.00	6.93	4,625	34.20	11.05	-866	8,385	30.87
2025 10	4,072	26.20	6.69	3,810	-8.17	9.72	262	7,882	6.87
2025 11	4,104	36.69	6.41	4,205	8.10	8.77	-101	8,309	20.55
2025 12	4,752	54.41	7.61	4,709	3.13	10.94	44	9,461	23.78
2026 1	5,348	105.92	8.13	3,930	43.66	8.39	1,418	9,279	73.98
2026 2	3,383	28.92	6.79	3,410	-14.40	9.21	-27	6,793	2.80
2026 3	5,259	53.77	6.56	5,350	12.90	9.08	-91	10,609	30.04
2026 4	4,431	64.19	6.55	4,626	12.02	8.68	-195	9,057	32.64
2026 5	4,656	40.27	5.93	4,776	22.85	7.89	-120	9,433	30.87
1-當月	23,078	57.43	6.75	22,093	13.44	8.61	985	45,171	32.33

資料來源：財政部統計處，「115年5月海關進出口貿易統計速報」。

Source: Department of Statistics, Ministry of Finance, "Summary of Exports and Imports for May 2026".