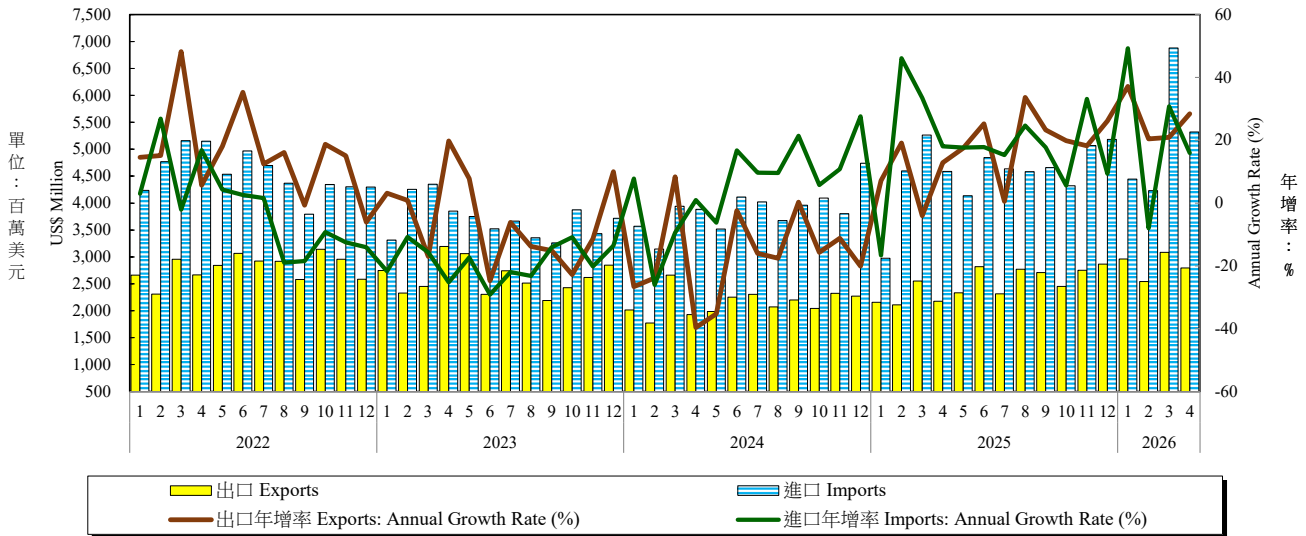


表八：臺灣對日本之進出口狀況
Table 8. External Trade by Major Country: Japan



年與月 Year & Month	出口 Exports			進口 Imports			貿易收支 (百萬美元) Trade Balance (US\$ Million)	總貿易額 Total Trade	
	金額 (百萬美元) Amount (US\$ Million)	年增率 Annual Growth Rate (%)	占比 Share (%)	金額 (百萬美元) Amount (US\$ Million)	年增率 Annual Growth Rate (%)	占比 Share (%)		金額 (百萬美元) Amount (US\$ Million)	年增率 Annual Growth Rate (%)
2016	19,471	-0.44	6.97	40,620	4.52	17.72	-21,150	60,091	2.86
2017	20,574	5.67	6.52	41,939	3.25	16.31	-21,365	62,513	4.03
2018	22,801	10.83	6.83	44,151	5.28	15.50	-21,350	66,952	7.10
2019	23,279	2.10	7.07	44,052	-0.23	15.42	-20,773	67,331	0.57
2020	23,398	0.51	6.78	45,901	4.20	16.04	-22,503	69,299	2.92
2021	29,206	24.82	6.54	56,117	22.26	14.69	-26,910	85,323	23.12
2022	33,609	15.07	7.01	54,626	-2.66	12.76	-21,017	88,235	3.41
2023	31,435	-6.47	7.27	44,344	-18.82	12.61	-12,910	75,779	-14.12
2024	25,830	-17.83	5.44	46,464	4.78	11.78	-20,634	72,294	-4.60
2025	30,013	16.19	4.69	54,852	18.05	11.34	-24,839	84,865	17.39
2024 1	2,015	-26.65	5.43	3,572	7.77	10.33	-1,557	5,587	-7.83
2024 2	1,772	-23.86	5.64	3,145	-26.07	13.38	-1,374	4,917	-25.29
2024 3	2,660	8.37	6.36	3,941	-9.44	11.90	-1,281	6,600	-3.02
2024 4	1,929	-39.63	5.15	3,886	0.91	12.52	-1,956	5,815	-17.48
2024 5	1,985	-35.22	5.32	3,516	-6.26	11.22	-1,531	5,500	-19.28
2024 6	2,252	-2.38	5.65	4,110	16.75	11.67	-1,859	6,362	9.17
2024 7	2,303	-16.00	5.77	4,020	9.67	11.44	-1,717	6,322	-1.31
2024 8	2,072	-17.60	4.75	3,676	9.59	11.43	-1,604	5,748	-2.06
2024 9	2,199	0.31	5.42	3,958	21.39	11.83	-1,760	6,157	12.92
2024 10	2,046	-15.73	4.96	4,095	5.74	11.97	-2,049	6,141	-2.53
2024 11	2,326	-11.23	5.66	3,804	10.78	11.50	-1,478	6,130	1.26
2024 12	2,274	-20.10	5.22	4,741	27.61	12.66	-2,467	7,015	6.92
2025 1	2,158	7.11	5.58	2,978	-16.64	10.40	-820	5,136	-8.07
2025 2	2,110	19.13	5.11	4,597	46.14	13.26	-2,486	6,707	36.41
2025 3	2,552	-4.05	5.15	5,261	33.50	12.35	-2,709	7,813	18.37
2025 4	2,177	12.81	4.47	4,589	18.10	11.13	-2,412	6,766	16.35
2025 5	2,332	17.53	4.51	4,135	17.63	10.57	-1,803	6,468	17.59
2025 6	2,821	25.27	5.29	4,843	17.81	11.74	-2,022	7,663	20.45
2025 7	2,314	0.50	4.08	4,636	15.33	10.96	-2,322	6,950	9.93
2025 8	2,769	33.62	4.74	4,582	24.65	11.00	-1,813	7,351	27.88
2025 9	2,710	23.25	5.00	4,659	17.70	11.13	-1,949	7,369	19.68
2025 10	2,452	19.88	4.03	4,323	5.57	11.03	-1,871	6,775	10.34
2025 11	2,750	18.21	4.29	5,066	33.16	10.56	-2,316	7,815	27.49
2025 12	2,868	26.15	4.59	5,183	9.33	12.05	-2,315	8,052	14.78
2026 1	2,960	37.15	4.50	4,445	49.27	9.49	-1,485	7,404	44.18
2026 2	2,541	20.42	5.10	4,229	-7.99	11.42	-1,688	6,771	0.95
2026 3	3,085	20.90	3.85	6,881	30.80	11.68	-3,796	9,967	27.56
2026 4	2,795	28.40	4.13	5,321	15.95	9.99	-2,526	8,116	19.95
1-當月	11,381	26.50	4.32	20,876	19.81	10.65	-9,495	32,258	22.09

資料來源：財政部統計處，「115年4月海關進出口貿易統計速報」。

Source: Department of Statistics, Ministry of Finance, "Summary of Exports and Imports for Apr 2026".