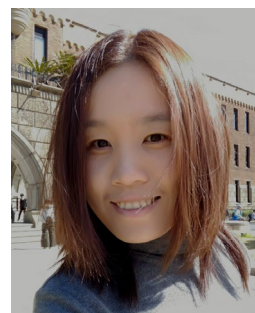


# 張雅婷

## Chang, Ya-Ting

【主持人】



現職：高雄長庚紀念醫院一般神經內科 助理教授級主治醫師

學歷：國立中山大學博士

### 主要職歷

- 高雄長庚紀念醫院助理教授級主治醫師
- 國立中山大學博士
- 高雄長庚紀念醫院加護病房主任
- 高雄長庚紀念醫院病房主任
- 日本大阪大學研究員
- 高雄長庚紀念醫院失智症中心成員
- 高雄長庚紀念醫院睡眠中心成員

### 備註

#### 【專長】

腦神經科學、腦網絡、腦影像、認知功能

#### 【執照】

神經專科

神經重症專科

#### 【近三年著作】

1. **Chang YT**, Lin HC, Chang WN, Tsai NW, Huang CC, Wang HC, Kung CT, Su YJ, Lin WC, Cheng BC, Su CM, Chen TY, Chiang YF, Lu CH (2017, Jan). Impact of inflammation and oxidative stress on carotid intima-media thickness in obstructive sleep apnea patients without metabolic syndrome. *J Sleep Res.* 2017 Apr; 26 (2) **(First author) SCI journal.**
2. Huang CW, Hsu SW, Tsai SJ, Chen NC, Liu ME, Lee CC, Huang SH, Chang WN, **Chang YT**, Tsai WC, Chang CC (2017, Jan). Genetic effect of interleukin-1 beta (C-511T) polymorphism on the structural covariance network and white matter integrity in Alzheimer's disease. *Journal of Neuroinflammation*, 2017 14(1):12. **SCI journal.**

3. Chang YT, Hsu SW, Tsai SJ, **Chang YT**, Huang CW, Liu ME, Chen NC, Chang WN, Hsu JL, Lee CC, Chang CC (2017, Jan). Genetic effect of MTHFR C677T polymorphism on the structural covariance network and white-matter integrity in Alzheimer's disease. *Human Brain Mapping*. 2017 38 (6):3039-3051. **SCI journal.**
4. Fang YN, Tong MS, Sung PH, Chen YL, Chen CH, Tsai NW, Huang CJ, **Chang YT**, Chen SF, Chang WN, Lu CH, Yip HK (2017, Jun). Higher neutrophil counts and neutrophil-to-lymphocyte ratio predict prognostic outcomes in patients after non-atrial fibrillation-caused ischemic stroke. *Biomedical Journal*. 2017 40 (3):154-162. **SCI journal.**
5. Chen CT, Chang CC, Chang WN, Tsai NW, Huang CC, **Chang YT**, Wang HC, Kung CT, Su YJ, Lin WC, Cheng BC, Su CM, Hsiao SY, Hsu CW, Lu CH (2017, Sep). Neuropsychiatric symptoms in Alzheimer's disease: associations with caregiver burden and treatment outcomes. *QJM-an international journal of medicine*. 2017 110 (9):565-570. **SCI journal.**
6. Chen SF, Liu MH, Chen NC, Horng HD, Tsao WL, Chang CC, **Chang YT**. Educational effect on Ascertain Dementia 8-item Informant Questionnaire to Detect Dementia in the Taiwanese population. *Int Psychogeriatr*. 2017 Dec 10:1-9 (**Corresponding author**) **SCI journal.**
7. **Chang YT**, Lu CH, Wu ML, Hsu SW, Huang CW, Chang WN, Lien CY, Lee JJ, Chang CC. Salience Network and Depressive Severities in Parkinson's Disease with Mild Cognitive Impairment: A Structural Covariance Network Analysis. *Frontiers in Aging Neuroscience*. 2018 Jan 10; 9: 417. (**First author**) **SCI journal.**
8. Chang CC, Tsai SJ, Chen NC, Huang CW, Hsu SW, **Chang YT**, Liu ME, Chang WN, Tsai WC, Lee CC. Catechol-O-Methyltransferase Val158Met Polymorphism on Striatum Structural Covariance Networks in Alzheimer's Disease. *Mol Neurobiol*. 2018 Jun; 55 (6): 4637-4649. **SCI journal.**
9. Huang CW, Hsu SW, **Chang YT**, Huang SH, Huang YC, Lee CC, Chang WN, Lui CC, Chen NC, Chang CC. Cerebral Perfusion Insufficiency and Relationships with Cognitive Deficits in Alzheimer's Disease: A Multiparametric Neuroimaging Study. *Sci Rep*. 2018 Jan 24; 8 (1): 1541. **SCI journal.**
10. Chang CC, **Chang YT**, Huang CW, Tsai SJ, Hsu SW, Huang SH, Lee CC, Chang WN, Lui CC, Lien CY. Associations of Bcl-2 rs956572 genotype groups in the structural covariance network in early-stage Alzheimer's disease. *Alzheimers Res Ther*. 2018 Feb 8; 10 (1):17. **SCI journal.**
11. Lee JJ, Chang WN, Hsu JL, Huang CW, **Chang YT**, Hsu SW, Huang SH, Lee CC, Lien CY, Chang CC. Diffusion kurtosis imaging as a neuroimaging biomarker in patients with carbon

- monoxide intoxication. *Neurotoxicology*. 2018 Jul 11; 68: 38-46. **SCI journal.**
12. Lai YR, Lin YJ, Shih FY, Wang HC, Tsai NW, Kung CT, Lin WC, Cheng BC, Su YJ, **Chang YT**, Su CM, Hsiao SY, Huang CC, Lu CH. Effect of Baroreceptor Sensitivity on Outcomes in Patients with Acute Spontaneous Intracerebral Hemorrhage. *World Neurosurg*. 2018 Jan; 109. **SCI journal.**
  13. Hung CW, Lin WC, Chang WN, Su TM, Kung CT, Tsai NW, Wang HC, Huang CC, Cheng BC, Su YJ, **Chang YT**, Su CM, Hsiao SY, Lu CH. Risk factors and outcomes of cerebrospinal fluid overdrainage in HIV-negative patients with cryptococcal meningitis after the ventriculoperitoneal shunting procedure. *J Microbiol Immunol Infect*. 2018 Aug; 51 (4): 545-551. **SCI journal.**
  14. Hsiao HT, Lee JJ, Chen HH, Wu MK, Huang CW, **Chang YT**, Lien CY, Wang JJ, Chang HI, Chang CC. Adequacy of nutrition and body weight in patients with early stage dementia: The cognition and aging study. *Clin Nutr*. 2018 Sep 22. pii: S0261-5614(18)32455-5. doi: 10.1016/j.clnu.2018.09.017. **SCI journal.**
  15. Chang HI, **Chang YT**, Tsai SJ, Huang CW, Hsu SW, Liu ME, Chang WN, Lien CY, Huang SH, Lee CC, Chang CC. MAOA-VNTR Genotype Effects on Ventral Striatum-Hippocampus Network in Alzheimer's Disease: Analysis Using Structural Covariance Network and Correlation with Neurobehavior Performance. *Mol Neurobiol*. 2018 Oct 18. doi: 10.1007/s12035-018-1394-0 **SCI journal.**
  16. **Chang YT**, Huang CW, Chang WN, Lee JJ, Chang CC. Altered Functional Network Affects Amyloid and Structural Covariance in Alzheimer's Disease. *BioMed Research International*. 2018 Dec 2;2018:8565620 **(First author) SCI journal.**
  17. Su YJ, Tsai NW, Kung CT, Wang HC, Lin WC, Huang CC, **Chang YT**, Su CM, Chiang YF, Cheng BC, Lin YJ4, Lu CH. Investigation of MicroRNA in Mitochondrial Apoptotic Pathway in Systemic Lupus Erythematosus. *Biomed Res Int*. 2018 Jul 10;2018:9026357. **SCI journal.**
  18. Hung CW, Lin WC, Chang WN, Su TM, Kung CT, Tsai NW, Wang HC, Huang CC, Cheng BC, Su YJ, **Chang YT**, Su CM, Hsiao SY, Lu CH. Risk factors and outcomes of cerebrospinal fluid overdrainage in HIV-negative patients with cryptococcal meningitis after the ventriculoperitoneal shunting procedure. *J Microbiol Immunol Infect*. 2018 Aug;51(4):545-551. **SCI journal.**
  19. Chen WC, **Chang YT**, Chen SF, Lin WC, Su YY, Luo SD. The symptom burden of autonomic dysfunction is positively associated with chronic rhinosinusitis status. *Rhinology*. 2018 Sep 1;56(3):227-233. **SCI journal.**

20. **Chang YT**, Huang CW, Huang SH, Hsu SW, Chang WN, Lee JJ, Chang CC. Genetic interaction is associated with lower metabolic connectivity and memory impairment in clinically mild Alzheimer's disease. *Genes Brain Behav.* 2019 Jun;18(5):e12490. **(First author) SCI journal.**
21. **Chang YT**, Mori E, Suzuki M, Ikeda M, Huang CW, Chang WN, Lee JJ, Chang CC. APOE-MS4A genetic interactions are associated with executive dysfunction and network abnormality in clinically mild Alzheimer's disease. *NeuroImage: Clinical.* 2019;21:101621. **(First author) SCI journal.**
22. **Chang YT**, Kazui H, Ikeda M, Huang CW, Huang SH, Hsu SW, Chang WN, Chang CC. Genetic Interaction of APOE and FGF1 is Associated with Memory Impairment and Hippocampal Atrophy in Alzheimer's Disease. *Aging and Disease.* 2019 Jun 1;10(3):510-519. **(First author) SCI journal.**