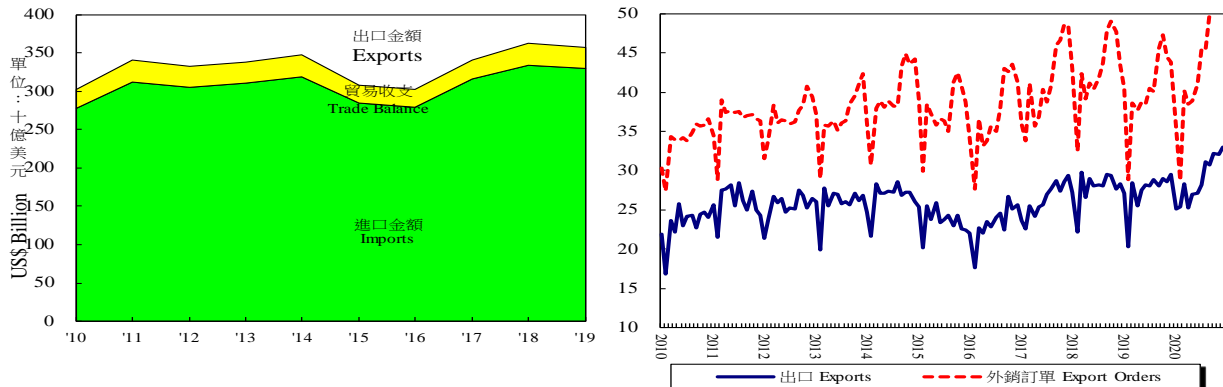


四、對外貿易 最新更新日期：2021年1月8日

根據財政部海關進出口貿易統計，2020年12月出口330.0億美元，創單月新高，較上月增3.2%，較上年同月增12.0%；第4季出口972.1億美元，較上年同季增11.7%；2020年出口3,452.8億美元，為歷年最高，較上年增4.9%(按新臺幣計算增0.2%)。12月進口272.4億美元，創單月新高，較上月增1.9%，較上年同月增0.9%；第4季進口787.2億美元，較上年同季增3.2%；2020年進口2,864.9億美元，較上年增0.3%(按新臺幣計算減4.1%)。

表六：對外貿易
Table 6. External Trade



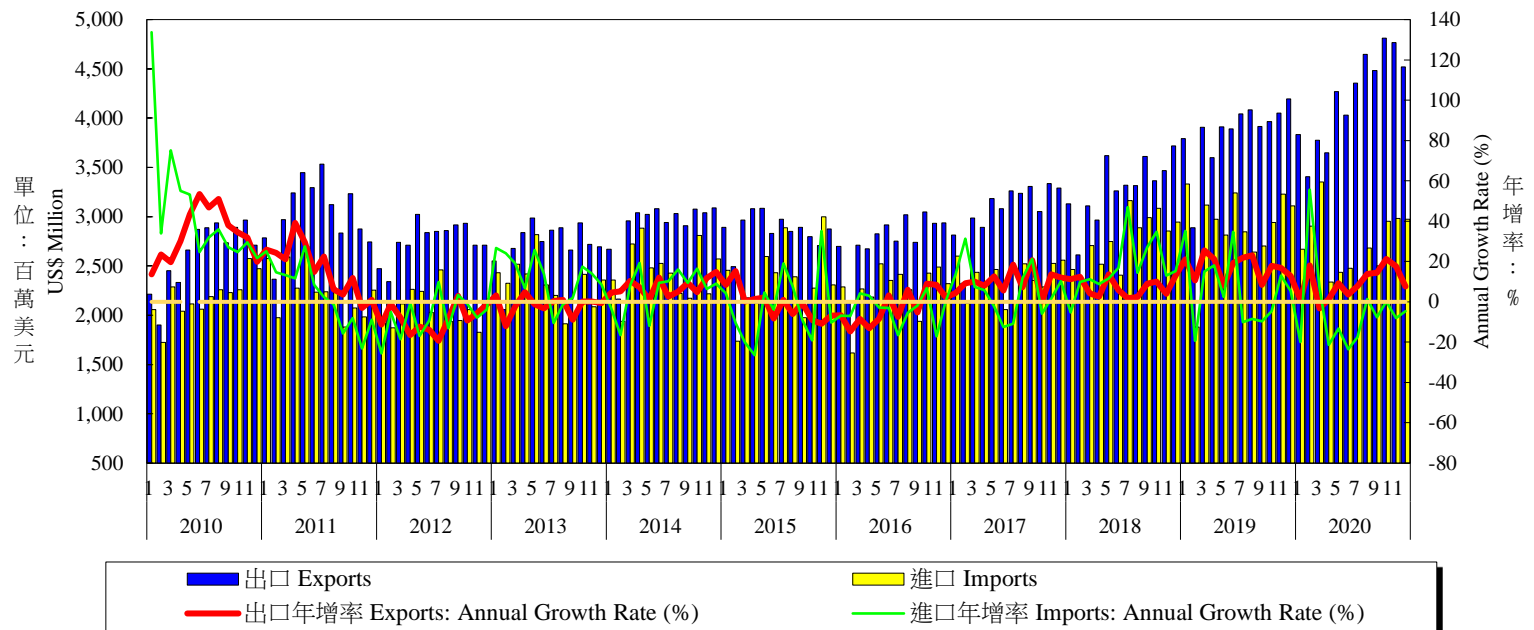
年與月 Year & Month	出口 Exports		進口 Imports		貿易收支 (百萬美元) Trade Balance (US\$ Million)	外銷訂單 Export Orders	
	金額 (百萬美元) Amount (US\$ Million)	年增率 Annual Growth Rate (%)	金額 (百萬美元) Amount (US\$ Million)	年增率 Annual Growth Rate (%)		金額 (百萬美元) Amount (Mil. US\$)	年增率 (%) Annual Growth Rate (%)
2010	277,352	35.16	255,746	44.38	21,606	406,714	26.14
2011	312,182	12.56	287,316	12.34	24,866	436,121	7.23
2012	305,315	-2.20	276,466	-3.78	28,848	441,004	1.12
2013	310,866	1.82	277,384	0.33	33,481	442,929	0.44
2014	319,413	2.75	281,096	1.34	38,318	472,814	6.75
2015	284,434	-10.95	236,380	-15.91	48,053	451,814	-4.44
2016	279,175	-1.85	229,199	-3.04	49,975	444,536	-1.61
2017	315,487	13.01	257,200	12.22	58,287	492,805	10.86
2018	334,007	5.87	284,792	10.73	49,216	511,823	3.86
2019	329,157	-1.45	285,651	0.30	43,506	484,557	-5.33
2019 1	27,116	-0.53	26,222	6.76	894	40,489	-5.98
2	20,318	-8.35	15,262	-20.45	5,056	28,902	-10.94
3	28,450	-4.51	25,359	6.35	3,091	38,585	-8.96
4	25,560	-3.73	22,858	1.90	2,702	37,665	-3.70
5	27,549	-4.82	23,080	-5.82	4,469	38,719	-5.82
6	28,211	0.36	24,389	6.59	3,822	38,497	-4.51
7	28,097	-0.43	24,489	-5.59	3,608	40,530	-3.04
8	28,781	2.71	22,768	-3.34	6,012	40,047	-8.31
9	28,084	-4.69	24,933	-0.72	3,151	45,526	-4.87
10	28,974	-1.53	25,022	-4.12	3,951	47,279	-3.48
11	28,554	3.15	24,284	5.69	4,270	44,534	-6.61
12	29,474	3.90	26,999	13.94	2,475	43,784	0.93
2020 1	25,048	-7.62	21,611	-17.60	3,437	35,305	-12.80
2	25,369	24.86	22,071	44.76	3,298	28,679	-0.77
3	28,251	-0.70	25,468	0.41	2,783	40,260	4.34
4	25,218	-1.34	22,945	0.42	2,273	38,526	2.29
5	27,000	-1.99	22,276	-3.49	4,723	38,891	0.44
6	27,126	-3.84	22,296	-8.56	4,829	41,000	6.50
7	28,190	0.34	22,827	-6.84	5,362	45,567	12.43
8	31,163	8.29	24,692	8.49	6,471	45,488	13.59
9	30,705	9.33	23,576	-5.44	7,129	50,026	9.88
10	32,217	11.19	24,766	-1.02	7,451	51,590	9.12
11	31,990	12.03	26,721	10.04	5,269	57,783	29.75
12	33,001	11.96	27,237	0.88	5,764	--	--
1-當月	345,276	4.90	286,486	0.29	58,790	473,115	7.34

資料來源：財政部統計處，「109年12月海關進出口貿易統計速報」；經濟部統計處，「109年11月外銷訂單統計」。

Source : Department of Statistics, Ministry of Finance, "Summary of Exports and Imports for December 2020".

Department of Statistics, MOEA, "Export Order in November 2020".

表七：臺灣對美國之進出口狀況
Table 7. External Trade by Major Country: U.S.A.

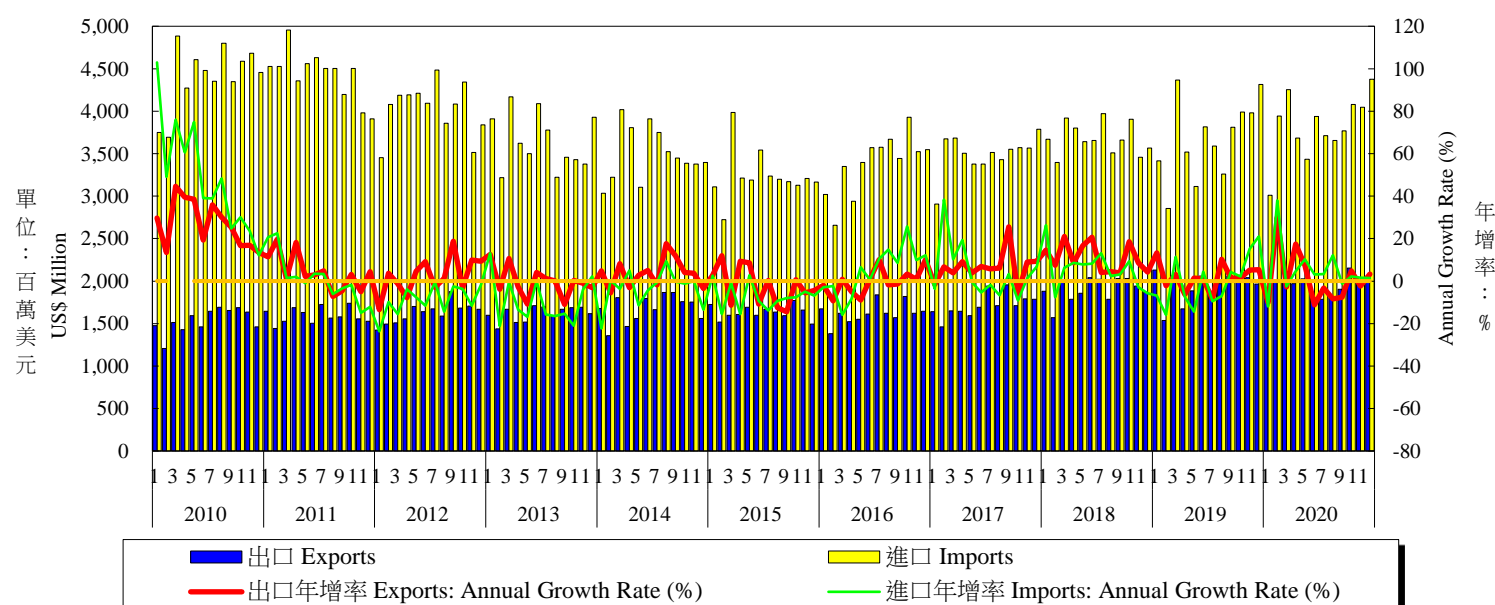


年與月 Year & Month	出口 Exports			進口 Imports			貿易收支 (百萬美元) Trade Balance (US\$ Million)	總貿易額 Total Trade	
	金額 (百萬美元) Amount (US\$ Million)	年增率 Annual Growth Rate (%)	占比 Share (%)	金額 (百萬美元) Amount (US\$ Million)	年增率 Annual Growth Rate (%)	占比 Share (%)		金額 (百萬美元) Amount (US\$ Million)	年增率 Annual Growth Rate (%)
2010	31,566	33.64	11.38	26,274	40.24	10.27	5,292	57,840	36.56
2011	36,451	15.47	11.68	27,025	2.86	9.41	9,425	63,476	9.74
2012	33,120	-9.14	10.85	24,844	-8.07	8.99	8,276	57,964	-8.68
2013	32,630	-1.48	10.50	27,785	11.84	10.02	4,846	60,415	4.23
2014	35,033	7.36	10.97	29,338	5.59	10.44	5,696	64,371	6.55
2015	34,448	-1.67	12.11	28,362	-3.32	12.00	6,086	62,811	-2.42
2016	33,396	-3.05	11.96	27,087	-4.50	11.82	6,309	60,483	-3.71
2017	36,773	10.11	11.66	28,396	4.83	11.04	8,377	65,168	7.75
2018	39,490	7.39	11.82	33,105	16.58	11.62	6,385	72,595	11.40
2019	46,247	17.11	14.05	34,850	5.27	12.20	11,397	81,097	11.71
2019 1	3,793	21.16	13.99	3,332	35.19	12.71	460	7,125	27.34
2019 2	2,887	10.55	14.21	1,882	-19.24	12.33	1,004	4,769	-3.50
2019 3	3,907	25.59	13.73	3,117	15.09	12.29	790	7,024	20.70
2019 4	3,600	21.37	14.08	2,973	18.16	13.01	626	6,573	19.90
2019 5	3,910	8.03	14.19	2,814	2.31	12.19	1,096	6,723	5.56
2019 6	3,892	19.32	13.80	3,241	34.69	13.29	651	7,133	25.84
2019 7	4,042	21.78	14.39	2,846	-9.97	11.62	1,196	6,889	6.29
2019 8	4,083	23.18	14.19	2,642	-8.52	11.61	1,441	6,726	8.42
2019 9	3,916	8.47	13.94	2,713	-9.31	10.88	1,202	6,629	0.28
2019 10	3,965	17.90	13.68	2,947	-4.43	11.78	1,018	6,912	7.14
2019 11	4,051	16.85	14.19	3,242	13.51	13.35	809	7,293	15.14
2019 12	4,204	13.09	14.26	3,119	5.85	11.55	1,084	7,323	9.61
2020 1	3,833	1.06	15.30	2,669	-19.92	12.35	1,163	6,502	-8.74
2020 2	3,408	18.04	13.43	2,903	55.71	13.15	504	6,311	32.33
2020 3	3,777	-3.33	13.37	3,352	7.51	13.16	425	7,129	1.50
2020 4	3,649	1.39	14.47	2,336	-21.42	10.18	1,313	5,986	-8.93
2020 5	4,270	9.21	15.82	2,438	-13.35	10.94	1,832	6,708	-0.23
2020 6	4,030	3.55	14.86	2,479	-23.54	11.12	1,551	6,509	-8.74
2020 7	4,356	7.75	15.45	2,342	-17.54	10.26	2,014	6,698	-2.78
2020 8	4,647	13.87	14.91	2,682	1.44	10.86	1,965	7,329	8.98
2020 9	4,484	14.51	14.60	2,504	-7.72	10.62	1,980	6,988	5.55
2020 10	4,812	21.37	14.94	2,953	0.19	11.92	1,860	7,765	12.42
2020 11	4,767	17.66	14.90	2,982	-8.03	11.16	1,785	7,748	6.42
2020 12	4,521	7.54	13.70	2,974	-4.66	10.92	1,547	7,495	2.60
1-當月	50,554	9.31	14.64	32,613	-6.42	11.38	17,941	83,167	2.58

資料來源：財政部統計處，「109年12月海關進出口貿易統計速報」。

Source : Department of Statistics, Ministry of Finance, "Summary of Exports and Imports for December 2020".

表八：臺灣對日本之進出口狀況
Table 8. External Trade by Major Country: Japan



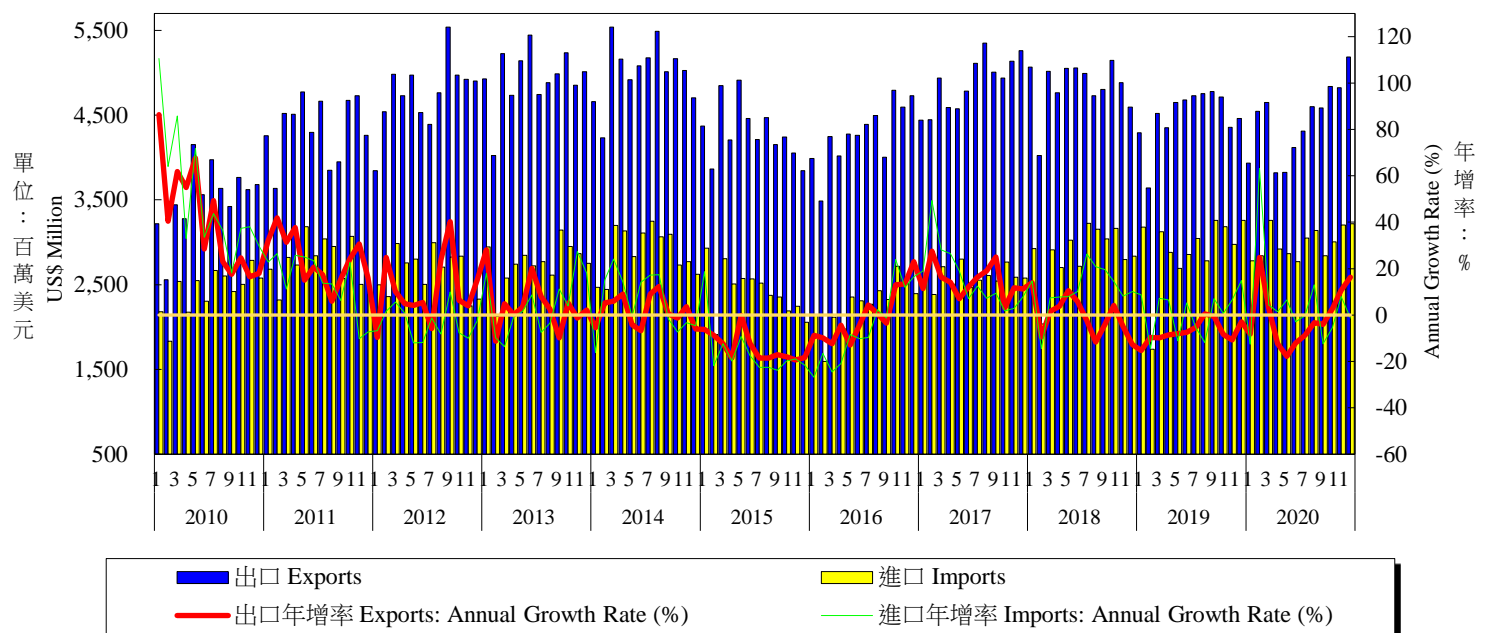
年與月 Year & Month	出口 Exports			進口 Imports			貿易收支 (百萬美元) Trade Balance (US\$ Million)	總貿易額 Total Trade		
	金額 (百萬美元) Amount (US\$ Million)	年增率 Annual Growth Rate (%)	占比 Share (%)	金額 (百萬美元) Amount (US\$ Million)	年增率 Annual Growth Rate (%)	占比 Share (%)		金額 (百萬美元) Amount (US\$ Million)	年增率 Annual Growth Rate (%)	
2010	18,445	26.28	6.65	52,910	43.97	20.69	-34,465	71,355	38.94	
2011	19,120	3.66	6.12	53,149	0.45	18.50	-34,029	72,269	1.28	
2012	19,518	2.08	6.39	48,342	-9.04	17.49	-28,824	67,860	-6.10	
2013	19,391	-0.65	6.24	43,690	-9.62	15.75	-24,299	63,081	-7.04	
2014	20,129	3.81	6.30	41,979	-3.92	14.93	-21,850	62,108	-1.54	
2015	19,557	-2.84	6.88	38,865	-7.42	16.44	-19,309	58,422	-5.93	
2016	19,471	-0.44	6.97	40,620	4.52	17.72	-21,150	60,091	2.86	
2017	20,574	5.67	6.52	41,939	3.25	16.31	-21,365	62,513	4.03	
2018	22,801	10.83	6.83	44,151	5.28	15.50	-21,350	66,952	7.10	
2019	23,279	2.10	7.07	44,052	-0.23	15.42	-20,773	67,331	0.57	
2019	1	2,129	13.31	7.85	3,415	-6.87	13.02	-1,286	5,545	-0.03
	2	1,536	-2.24	7.56	2,857	-15.87	18.72	-1,321	4,393	-11.56
	3	2,059	3.11	7.24	4,366	11.36	17.22	-2,308	6,425	8.57
	4	1,675	-6.29	6.55	3,520	-7.43	15.40	-1,845	5,194	-7.07
	5	1,883	1.40	6.84	3,116	-14.42	13.50	-1,232	4,999	-9.08
	6	2,061	1.01	7.31	3,816	4.39	15.65	-1,755	5,877	3.18
	7	1,846	-8.63	6.57	3,591	-9.52	14.67	-1,746	5,437	-9.22
	8	1,968	10.29	6.84	3,262	-7.01	14.33	-1,294	5,230	-1.18
	9	2,059	1.44	7.33	3,813	4.15	15.29	-1,754	5,872	3.16
	10	2,058	1.34	7.10	3,990	2.19	15.94	-1,932	6,047	1.87
	11	2,041	5.10	7.15	3,982	15.14	16.40	-1,941	6,023	11.51
	12	1,965	5.45	6.67	4,317	21.01	15.99	-2,352	6,282	15.61
2020	1	1,914	-10.12	7.64	3,009	-11.91	13.92	-1,095	4,923	-11.22
	2	1,997	29.98	7.87	3,943	38.00	17.87	-1,947	5,940	35.20
	3	2,003	-2.71	7.09	4,255	-2.55	16.71	-2,252	6,258	-2.60
	4	1,967	17.48	7.80	3,684	4.59	16.05	-1,716	5,651	8.79
	5	2,025	7.53	7.50	3,436	10.27	15.42	-1,411	5,461	9.25
	6	1,830	-11.22	6.75	3,938	3.14	17.66	-2,108	5,767	-1.86
	7	1,784	-3.36	6.33	3,710	3.27	16.25	-1,927	5,494	1.05
	8	1,804	-8.34	5.79	3,656	12.06	14.81	-1,852	5,459	4.39
	9	1,902	-7.59	6.20	3,766	-1.23	15.98	-1,864	5,669	-3.44
	10	2,155	4.72	6.69	4,078	2.22	16.47	-1,923	6,233	3.10
	11	1,993	-2.34	6.23	4,047	1.64	15.15	-2,054	6,040	0.31
	12	2,030	3.27	6.15	4,377	1.39	16.07	-2,347	6,406	2.03
1-當月	23,402	0.53	6.78	45,899	4.19	16.02	-22,496	69,301	2.95	

資料來源：財政部統計處，「109年12月海關進出口貿易統計速報」。

Source : Department of Statistics, Ministry of Finance, "Summary of Exports and Imports for December 2020".

表九：臺灣對東協之進出口狀況

Table 9. External Trade by Major Area: ASEAN



年與月 Year & Month	出口 Exports			進口 Imports			貿易收支 (百萬美元) Trade Balance (US\$ Million)	總貿易額 Total Trade		
	金額 (百萬美元) Amount (US\$ Million)	年增率 Annual Growth Rate (%)	占比 Share (%)	金額 (百萬美元) Amount (US\$ Million)	年增率 Annual Growth Rate (%)	占比 Share (%)		金額 (百萬美元) Amount (US\$ Million)	年增率 Annual Growth Rate (%)	
2010	42,291	37.26	15.25	29,141	45.68	11.39	13,150	71,433	40.58	
2011	52,061	23.10	16.68	33,106	13.60	11.52	18,955	85,167	19.23	
2012	57,039	9.56	18.68	31,854	-3.78	11.52	25,185	88,893	4.38	
2013	59,220	3.82	19.05	33,059	3.78	11.92	26,160	92,279	3.81	
2014	60,092	1.47	18.81	34,705	4.98	12.35	25,387	94,798	2.73	
2015	51,591	-14.15	18.14	29,031	-16.35	12.28	22,559	80,622	-14.95	
2016	51,248	-0.66	18.36	27,179	-6.38	11.86	24,069	78,427	-2.72	
2017	58,518	14.19	18.55	31,000	14.06	12.05	27,518	89,518	14.14	
2018	58,126	-0.67	17.40	34,549	11.45	12.13	23,577	92,674	3.53	
2019	53,935	-7.21	16.39	34,965	1.21	12.24	18,969	88,900	-4.07	
2019	1	4,290	-15.29	15.82	3,179	8.59	12.12	1,111	7,469	-6.54
	2	3,640	-9.59	17.91	1,741	-14.54	11.41	1,898	5,381	-11.25
	3	4,522	-9.84	15.89	3,123	7.27	12.31	1,399	7,644	-3.56
	4	4,354	-8.59	17.03	2,879	6.46	12.60	1,474	7,233	-3.14
	5	4,651	-7.95	16.88	2,692	-11.05	11.66	1,959	7,343	-9.11
	6	4,681	-7.44	16.59	2,858	5.17	11.72	1,824	7,539	-3.04
	7	4,731	-5.22	16.84	3,047	-5.55	12.44	1,684	7,778	-5.35
	8	4,756	0.59	16.53	2,783	-11.78	12.22	1,974	7,539	-4.36
	9	4,779	-0.50	17.02	3,247	6.77	13.02	1,532	8,027	2.45
	10	4,716	-8.35	16.28	3,181	0.44	12.71	1,535	7,896	-4.93
	11	4,358	-10.78	15.26	2,970	6.23	12.23	1,387	7,328	-4.48
	12	4,460	-2.94	15.13	3,261	14.87	12.08	1,199	7,721	3.84
2020	1	3,936	-8.27	15.71	2,780	-12.57	12.86	1,156	6,715	-10.10
	2	4,545	24.87	17.91	2,839	63.06	12.86	1,705	7,384	37.23
	3	4,652	2.89	16.47	3,257	4.31	12.79	1,395	7,910	3.47
	4	3,818	-12.31	15.14	2,922	1.48	12.74	896	6,740	-6.82
	5	3,823	-17.81	14.16	2,865	6.41	12.86	958	6,688	-8.93
	6	4,118	-12.04	15.18	2,773	-2.96	12.44	1,344	6,891	-8.60
	7	4,314	-8.77	15.30	3,051	-0.15	13.37	1,263	7,366	-5.30
	8	4,599	-3.30	14.76	3,138	13.01	12.71	1,462	7,737	2.63
	9	4,586	-4.03	14.94	2,844	-12.43	12.06	1,743	7,430	-7.55
	10	4,839	2.61	15.02	3,007	-5.48	12.14	1,832	7,845	-0.72
	11	4,823	10.69	15.08	3,205	7.91	12.00	1,618	8,029	9.44
	12	5,186	16.29	15.71	3,220	-1.24	11.82	1,966	8,406	8.90
1-當月	53,239	-1.29	15.42	35,902	2.68	12.53	17,337	89,141	0.25	

資料來源：財政部統計處，「109年12月海關進出口貿易統計速報」。

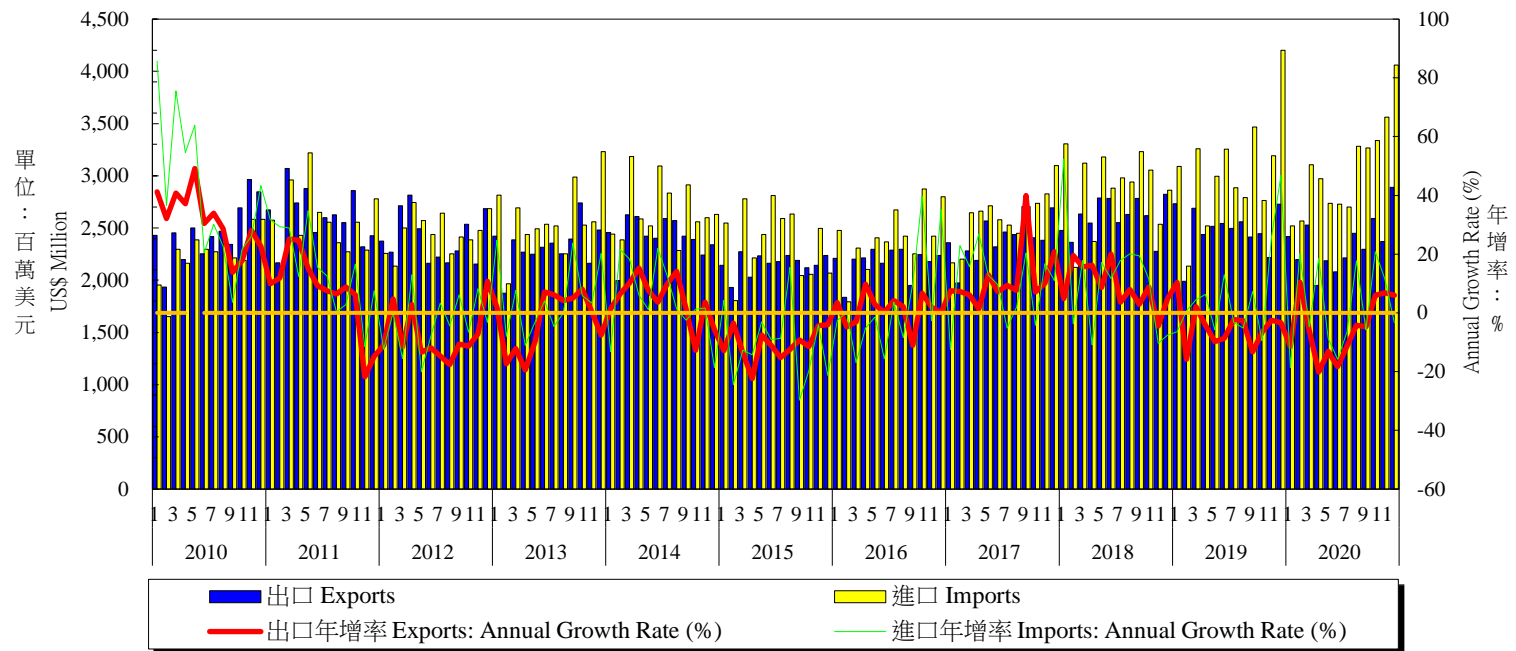
說明：東協包括新加坡、馬來西亞、菲律賓、泰國、印尼、越南、汶萊、寮國、緬甸及柬埔寨。

Source：Department of Statistics, Ministry of Finance, "Summary of Exports and Imports for December 2020".

Note：「ASEAN」 refers to Singapore, Malaysia, Philippines, Thailand, Indonesia, Vietnam, Brunei, Laos, Myanmar and Cambodia.

表十：臺灣對歐洲之進出口狀況

Table 10. External Trade by Major Area: Europe



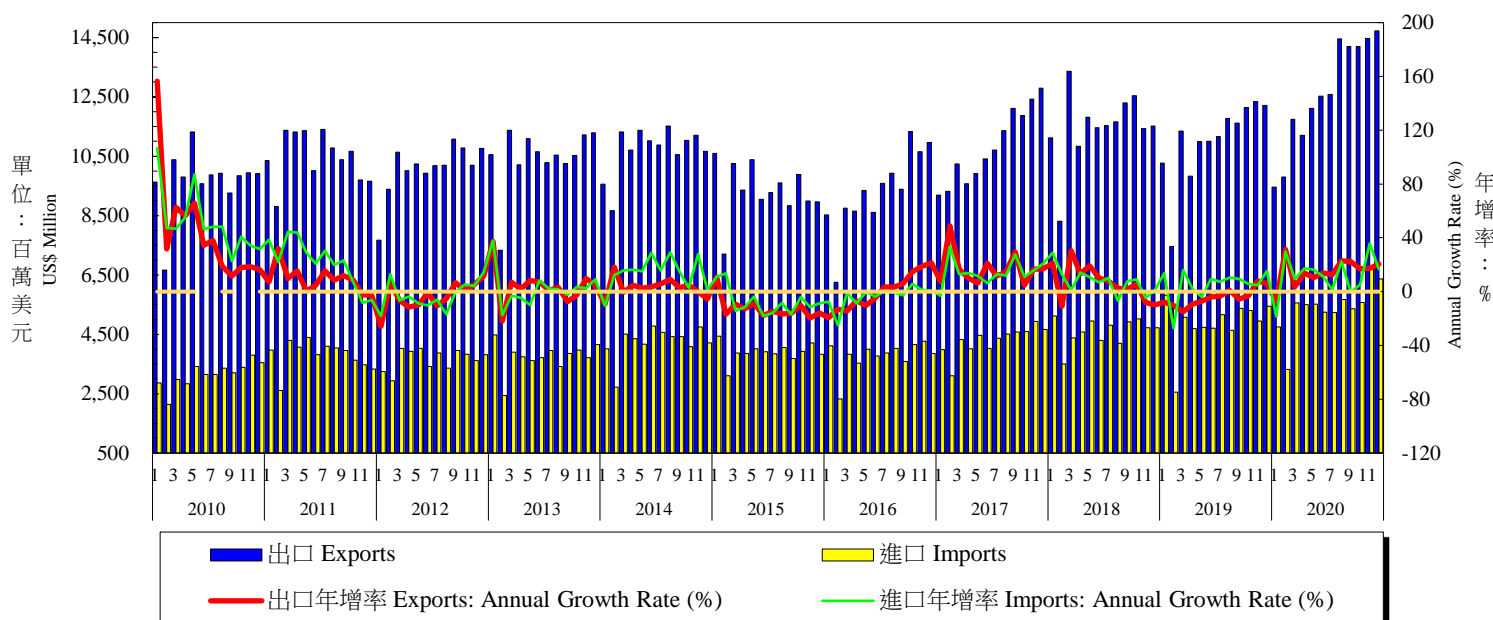
年與月 Year & Month	出口 Exports			進口 Imports			貿易收支 (百萬美元) Trade Balance (US\$ Million)	總貿易額 Total Trade	
	金額 (百萬美元) Amount (US\$ Million)	年增率 Annual Growth Rate (%)	占比 Share (%)	金額 (百萬美元) Amount (US\$ Million)	年增率 Annual Growth Rate (%)	占比 Share (%)		金額 (百萬美元) Amount (US\$ Million)	年增率 Annual Growth Rate (%)
2010	29,501	30.29	10.64	26,934	36.20	10.53	2,567	56,435	33.04
2011	31,364	6.32	10.05	30,775	14.26	10.71	590	62,139	10.11
2012	28,872	-7.95	9.46	29,507	-4.12	10.67	-635	58,379	-6.05
2013	27,906	-3.34	8.98	31,012	5.10	11.18	-3,106	58,918	0.92
2014	29,071	4.17	9.10	32,036	3.30	11.40	-2,965	61,106	3.71
2015	25,869	-11.01	9.10	28,491	-11.06	12.05	-2,622	54,361	-11.04
2016	26,124	0.98	9.36	28,892	1.41	12.61	-2,769	55,016	1.21
2017	28,778	10.16	9.12	31,315	8.39	12.18	-2,537	60,093	9.23
2018	31,278	8.69	9.36	34,580	10.43	12.14	-3,303	65,858	9.59
2019	29,770	-4.82	9.04	36,530	5.64	12.79	-6,760	66,301	0.67
2019 1	2,733	10.36	10.08	3,091	-6.45	11.79	-358	5,824	0.75
2019 2	1,990	-15.78	9.79	2,135	0.63	13.99	-145	4,124	-8.02
2019 3	2,690	2.10	9.46	3,259	4.45	12.85	-569	5,949	3.38
2019 4	2,438	-4.26	9.54	2,521	6.33	11.03	-82	4,959	0.85
2019 5	2,515	-9.81	9.13	2,997	-5.78	12.99	-482	5,512	-7.66
2019 6	2,544	-8.62	9.02	3,254	12.95	13.34	-709	5,798	2.35
2019 7	2,496	-2.18	8.89	2,886	-3.17	11.79	-390	5,382	-2.72
2019 8	2,559	-2.70	8.89	2,789	-5.16	12.25	-230	5,349	-4.00
2019 9	2,413	-13.32	8.59	3,465	7.30	13.90	-1,052	5,878	-2.21
2019 10	2,446	-6.60	8.44	2,763	-9.52	11.04	-317	5,209	-8.22
2019 11	2,217	-2.57	7.76	3,191	25.83	13.14	-974	5,409	12.26
2019 12	2,728	-3.41	9.26	4,201	46.81	15.56	-1,473	6,929	21.85
2020 1	2,419	-11.49	9.66	2,518	-18.53	11.65	-100	4,937	-15.23
2020 2	2,199	10.53	8.67	2,566	20.15	11.63	-367	4,765	15.53
2020 3	2,529	-6.00	8.95	3,104	-4.83	12.19	-576	5,633	-5.31
2020 4	1,948	-20.09	7.73	2,973	18.55	12.96	-1,024	4,921	-0.76
2020 5	2,185	-13.13	8.09	2,737	-8.72	12.29	-552	4,922	-10.71
2020 6	2,080	-18.26	7.67	2,727	-15.83	12.23	-648	4,807	-17.09
2020 7	2,214	-11.32	7.85	2,701	-6.45	11.83	-488	4,915	-8.68
2020 8	2,451	-4.25	7.86	3,282	17.74	13.29	-832	5,733	7.18
2020 9	2,297	-4.81	7.48	3,265	-5.77	13.85	-968	5,562	-5.42
2020 10	2,591	5.92	8.04	3,337	20.78	13.47	-747	5,928	13.86
2020 11	2,369	6.84	7.41	3,562	11.62	13.33	-1,193	5,931	9.80
2020 12	2,891	5.97	8.76	4,060	-3.36	14.90	-1,169	6,950	0.33
1-當月	28,171	-5.37	8.16	36,833	0.83	12.86	-8,662	65,005	-1.97

資料來源：財政部統計處，「109年12月海關進出口貿易統計速報」。

Source : Department of Statistics, Ministry of Finance, "Summary of Exports and Imports for December 2020".

表十一：兩岸經貿

Table 11. External Trade by Major Country: China & Hong Kong



年與月 Year & Month	出口 Exports			進口 Imports			貿易收支 (百萬美元) Trade Balance (US\$ Million)	人民幣兌美元匯率 Exchange Rate (RMB/USD)	中國大陸消費者物價指數年增率 China's Consumer Price Index: Annual Growth Rate (%)	
	金額 (百萬美元) Amount (US\$ Million)	年增率 Annual Growth Rate (%)	占比 Share (%)	金額 (百萬美元) Amount (US\$ Million)	年增率 Annual Growth Rate (%)	占比 Share (%)				
2010	116,120	37.46	41.87	37,822	47.73	14.79	78,299	6.77	3.33	
2011	125,805	8.34	40.30	45,681	20.78	15.90	80,124	6.46	5.41	
2012	121,083	-3.75	39.66	44,016	-3.64	15.92	77,067	6.31	2.65	
2013	125,305	3.49	40.31	44,931	2.08	16.20	80,375	6.20	2.62	
2014	128,481	2.53	40.22	50,988	13.48	18.14	77,493	6.14	1.99	
2015	112,386	-12.53	39.51	46,732	-8.35	19.77	65,654	6.23	1.44	
2016	111,986	-0.36	40.11	45,321	-3.02	19.77	66,665	6.64	2.00	
2017	129,911	16.01	41.18	51,549	13.74	20.04	78,362	6.76	1.55	
2018	137,899	6.15	41.29	55,199	7.08	19.38	82,700	6.62	2.12	
2019	132,115	-4.19	40.14	58,457	5.90	20.46	73,658	6.91	2.90	
2019	1	10,262	-7.75	37.84	5,813	13.53	22.17	4,449	6.79	1.70
	2	7,456	-10.30	36.70	2,554	-27.01	16.74	4,901	6.74	1.50
	3	11,348	-15.08	39.89	5,080	16.12	20.03	6,267	6.71	2.30
	4	9,831	-9.23	38.46	4,688	2.32	20.51	5,143	6.72	2.50
	5	10,984	-7.05	39.87	4,741	-4.09	20.54	6,243	6.87	2.70
	6	11,001	-4.03	39.00	4,704	9.37	19.29	6,297	6.90	2.70
	7	11,161	-3.23	39.72	5,162	7.32	21.08	5,999	6.88	2.80
	8	11,767	0.89	40.89	4,631	10.25	20.34	7,136	7.06	2.80
	9	11,612	-5.57	41.35	5,379	9.47	21.58	6,233	7.12	3.00
	10	12,144	-3.18	41.92	5,305	5.68	21.20	6,839	7.08	3.80
	11	12,343	7.95	43.23	4,942	4.82	20.35	7,401	7.02	4.50
	12	12,209	5.98	41.42	5,451	15.53	20.19	6,757	7.02	4.50
2020	1	9,458	-7.82	37.76	4,742	-18.42	21.94	4,716	6.92	5.40
	2	9,803	31.48	38.64	3,313	29.67	15.01	6,491	7.00	5.20
	3	11,737	3.43	41.55	5,562	9.46	21.84	6,176	7.02	4.30
	4	11,208	14.00	44.44	5,503	17.37	23.98	5,705	7.07	3.30
	5	12,117	10.32	44.88	5,517	16.36	24.77	6,600	7.11	2.40
	6	12,520	13.80	46.15	5,243	11.42	23.51	7,277	7.09	2.50
	7	12,581	12.72	44.63	5,233	1.35	22.92	7,348	7.01	2.70
	8	14,454	22.86	46.38	5,665	22.31	22.94	8,789	6.93	2.40
	9	14,202	22.30	46.25	5,365	-0.27	22.76	8,837	6.81	1.70
	10	14,192	16.86	44.05	5,567	4.93	22.48	8,625	7.81	0.50
	11	14,463	17.18	45.21	6,705	35.68	25.09	7,758	8.81	-0.50
	12	14,716	20.54	44.59	6,363	16.74	23.36	8,353	9.81	0.20
1-當月	151,452	14.64	43.86	64,779	10.81	22.61	86,673	10.81	2.51	

資料來源：財政部統計處，「109年12月海關進出口貿易統計速報」；中央銀行，「金融統計月報」；中國大陸國家統計局。

Source : Department of Statistics, Ministry of Finance, "Summary of Exports and Imports for December 2020".

Central Bank of Republic of China (Taiwan), "Financial Statistics Monthly, Republic of China (Taiwan)".

1 Central Bank of Republic of China (Taiwan); National Bureau of Statistics of China.