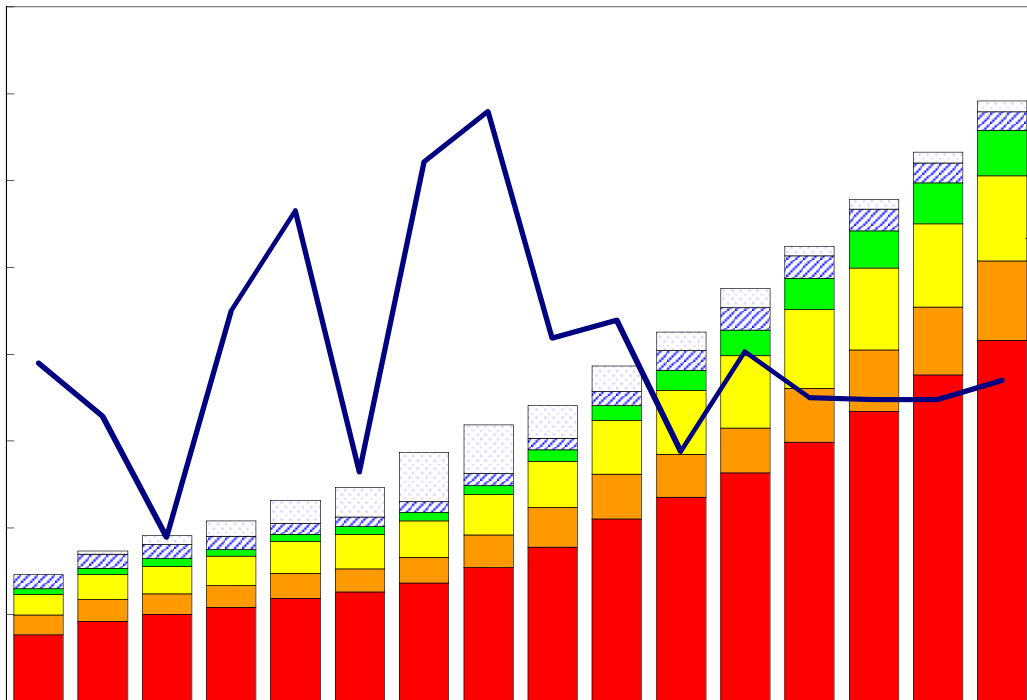


# 臺灣重要經濟變動指標

## Major Economic Indicators for Taiwan



中華經濟研究院

經濟展望中心 編製

中華民國105年12月

Chung-Hua Institution for Economic Research

December 2016

# 目次

# Index

|                         |   |
|-------------------------|---|
| 臺灣經濟預測.....I            | Taiwan's Macroeconomic Forecasts.....I            |
| 表一：主要總體經濟指標.....2-3     | Table 1 : GDP Components by Expenditure.....2-3   |
| 表二：各業產值概況.....4-5       | Table 2 : GDP Components by Industry.....4-5      |
| 表三：生產概況.....6           | Table 3 : Industry Indicators.....6               |
| 表四：景氣概況.....7           | Table 4 : Cyclical Indicators.....7               |
| 表五：物價與金融概況.....8-9      | Table 5 : Prices and Financial Situation.....8-9  |
| 表六：臺灣進出口貿易.....10       | Table 6 : Foreign Trade Values.....10             |
| 表七：臺灣對美國之進出口狀況.....11   | Table 7 : Trade with the United States .....11    |
| 表八：臺灣對日本之進出口狀況.....12   | Table 8 : Trade with Japan.....12                 |
| 表九：臺灣對東協六國之進出口狀況.....13 | Table 9 : Trade with ASEAN6.....13                |
| 表十：臺灣對香港之進出口狀況.....14   | Table 10 : Trade with Hong Kong .....14           |
| 表十一：兩岸經貿.....15         | Table 11 : Trade across the Taiwan Straits.....15 |

# 臺灣經濟預測

## Taiwan's Macroeconomic Forecasts

|   | 2016年      | 2017年季預測            |            |            |            | 2015年     | 2016年     | 2017年     |
|---|------------|---------------------|------------|------------|------------|-----------|-----------|-----------|
|   | 第4季<br>預測值 | Year 2017 Quarterly |            |            |            | 實際值       | 預測值       | 預測值       |
|   |            | 第1季<br>預測值          | 第2季<br>預測值 | 第3季<br>預測值 | 第4季<br>預測值 | 2015      | 2016      | 2017      |
| <b>GDP, GNI及其組成, 新臺幣十億元, GDP, GNI and Major Components, Billions NT Dollars</b> |            |                     |            |            |            |           |           |           |
| <b>實質GDP, Real GDP</b>  | 4,129.10   | 3,877.68            | 3,964.65   | 4,090.50   | 4,184.50   | 15,641.35 | 15,843.24 | 16,117.33 |
| 年變動率, yoy(%)  | 2.15       | 2.40                | 1.83       | 1.40       | 1.34       | 0.72      | 1.29      | 1.73      |
| <b>每人平均GNI, per capita GNI<sup>[1]</sup></b>                                    | 6,108.01   | 6,098.83            | 5,799.74   | 5,928.62   | 6,118.07   | 23,275.58 | 23,409.58 | 23,945.27 |
| <b>民間消費, Private Consumption</b>  | 2,192.61   | 2,239.20            | 2,215.55   | 2,260.70   | 2,233.21   | 8,630.73  | 8,799.30  | 8,948.66  |
| 年變動率, yoy(%)  | 1.12       | 1.59                | 1.66       | 1.69       | 1.85       | 2.68      | 1.95      | 1.70      |
| <b>固定資本形成, Total Fixed Investment</b>   | 958.11     | 864.12              | 913.50     | 985.43     | 969.10     | 3,560.12  | 3,639.45  | 3,732.15  |
| 年變動率, yoy(%)  | 5.24       | 3.37                | 3.36       | 2.47       | 1.15       | 1.64      | 2.23      | 2.55      |
| <b>民間投資, Private Fixed Investment</b>   | 713.12     | 753.10              | 753.68     | 829.06     | 725.78     | 2,912.36  | 2,976.64  | 3,061.61  |
| 年變動率, yoy(%)  | 3.81       | 3.46                | 3.41       | 2.76       | 1.77       | 2.97      | 2.21      | 2.85      |
| <b>財貨與服務輸出, Exports, gds+serv</b>   | 3,121.19   | 2,725.15            | 2,879.15   | 3,026.27   | 3,156.03   | 11,423.46 | 11,561.45 | 11,786.60 |
| 年變動率, yoy(%)  | 4.60       | 2.01                | 2.77       | 2.00       | 1.12       | -0.34     | 1.21      | 1.95      |
| <b>財貨與服務輸入, Imports, gds+serv</b>   | 2,770.62   | 2,488.19            | 2,609.11   | 2,777.35   | 2,818.37   | 10,270.06 | 10,502.01 | 10,693.02 |
| 年變動率, yoy(%)  | 5.22       | 1.56                | 2.06       | 1.93       | 1.72       | 1.19      | 2.26      | 1.82      |
| <b>海關出口 (fob, 億美元), Merchandise Export (fob, US \$100 mil)</b>                  | 759.91     | 653.35              | 718.23     | 736.06     | 773.67     | 2853.44   | 2786.24   | 2881.31   |
| 年變動率, yoy(%)  | 9.18       | 4.26                | 4.62       | 3.21       | 1.81       | -10.86    | -2.35     | 3.41      |
| <b>海關進口 (cif, 億美元), Merchandise Import (cif, US \$100mil)</b>                   | 629.13     | 526.76              | 592.59     | 618.01     | 640.46     | 2372.19   | 2295.83   | 2377.82   |
| 年變動率, yoy(%)  | 9.27       | 4.28                | 4.36       | 4.09       | 1.80       | -15.83    | -3.22     | 3.57      |
| <b>躉售物價指數, Wholesale Price Index</b>  | 84.67      | 85.77               | 86.09      | 85.35      | 85.79      | 87.41     | 84.60     | 85.75     |
| 年變動率, yoy(%)  | -1.09      | 1.39                | 1.42       | 1.32       | 1.32       | -8.85     | -3.21     | 1.36      |
| <b>消費者物價指數, Consumer Price Index</b>  | 106.18     | 105.65              | 106.17     | 106.88     | 107.61     | 103.65    | 105.06    | 106.58    |
| 年變動率, yoy(%)  | 1.65       | 1.36                | 1.44       | 1.65       | 1.35       | -0.31     | 1.36      | 1.45      |
| <b>M2貨幣存量(日平均), Money Stock (M2)</b>  | 41078.67   | 42,127.14           | 42,456.70  | 42,928.72  | 43,253.40  | 38,894.05 | 40,665.28 | 42,691.49 |
| 年變動率, yoy(%)  | 4.21       | 4.61                | 4.83       | 5.19       | 5.29       | 6.34      | 4.55      | 4.98      |
| <b>臺幣兌美元匯率, Exchange Rate(NT\$/US\$)</b>  | 31.93      | 32.16               | 32.23      | 32.44      | 32.58      | 31.91     | 32.36     | 32.35     |
| 年變動率, yoy(%) <sup>[2]</sup>   | 2.80       | 3.56                | 0.66       | -2.23      | -2.04      | -5.06     | -1.42     | 0.03      |
| <b>商業本票利率, 31-90 day Commercial Paper Rate</b>                                  | 0.28       | 0.28                | 0.32       | 0.34       | 0.38       | 0.58      | 0.35      | 0.33      |
| <b>失業率(%), Unemployment Rate(%)</b>   | 3.98       | 3.95                | 3.90       | 3.97       | 3.87       | 3.78      | 3.95      | 3.92      |

說明:有關匯率變動百分比, 正值表示升值, 負數表示貶值比率。

資料來源:中華經濟研究院, 經濟展望中心, 2016年12月20日。

Source: CEF, CIER, Dec. 20, 2016.

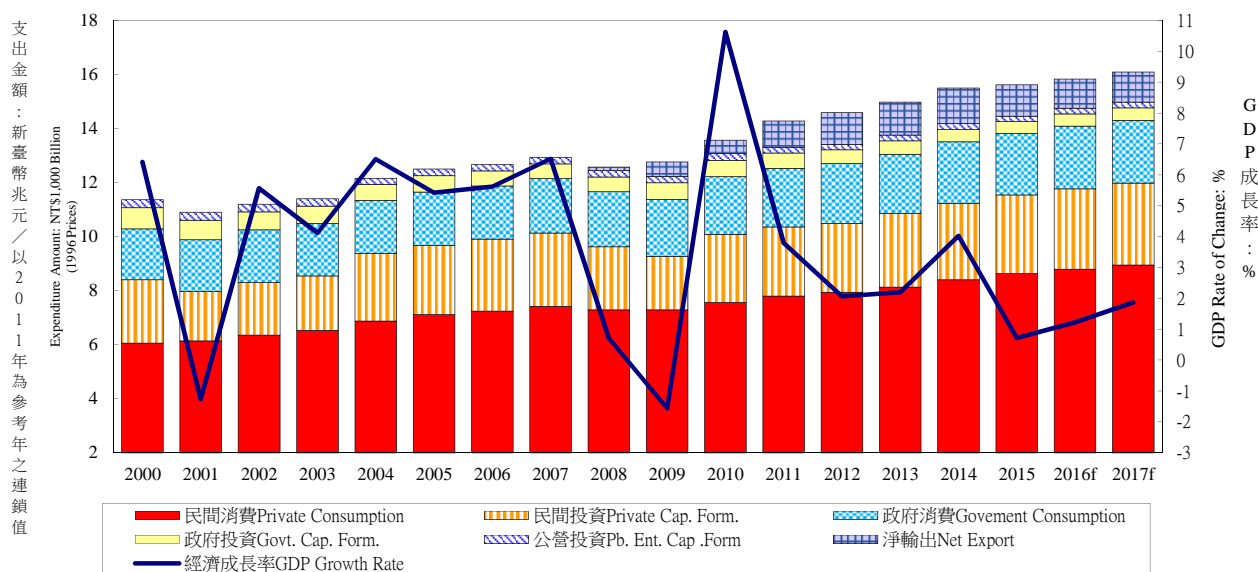
說明:[1]:有關每人平均GNI在此以美元表示。

[2]:有關匯率年增率(%), 正值表示升值, 負數表示貶值比率。

# 表一：主要總體經濟指標

## Table 1. GDP Components by Expenditure

### 實質GDP各需求支出及成長率 Real GDP Expenditure & Growth Rate



| 年與季<br>Year & Quarter | GDP 經濟成長率<br>Economic Growth Rate (%) | 名目GDP (新台幣十億元)<br>GDP (Bil.NT\$) | 民間消費<br>Private Consumption Expenditure |                               | 民間固定投資<br>Private Spe. Gross Fixed Cap. Formation |                               | 商品及勞務輸出<br>Exports of Goods and Services |                               | 商品及勞務輸入<br>Imports of Goods and Services |                               | 政府消費<br>Government Consumption Expenditure |                               |
|-----------------------|---------------------------------------|----------------------------------|---|-------------------------------|---|-------------------------------|--|-------------------------------|--|-------------------------------|--|-------------------------------|
|                       |                                       |                                  | 占GDP /GDP (%)                           | 年增率 Annual Rate of Change (%) | 占GDP /GDP (%)                                     | 年增率 Annual Rate of Change (%) | 占GDP /GDP (%)                            | 年增率 Annual Rate of Change (%) | 占GDP /GDP (%)                            | 年增率 Annual Rate of Change (%) | 占GDP /GDP (%)                              | 年增率 Annual Rate of Change (%) |
| 2000                  | 6.42                                  | 10,351                           | 55.13                                   | 5.24                          | 18.47   | 14.52                         | 51.91                                    | 18.00                         | 49.92                                    | 14.85                         | 15.69                                      | 0.62                          |
| 2001                  | -1.26                                 | 10,158                           | 56.67                                   | 1.43                          | 14.53   | -22.47                        | 48.66                                    | -8.47                         | 43.45                                    | -14.57                        | 16.70                                      | 2.44                          |
| 2002                  | 5.57                                  | 10,681                           | 55.74                                   | 3.48                          | 14.75   | 6.60                          | 50.81                                    | 11.64                         | 43.93                                    | 6.39                          | 16.38                                      | 1.77                          |
| 2003                  | 4.12                                  | 10,966                           | 55.63                                   | 2.86                          | 15.12   | 3.21                          | 54.02                                    | 10.02                         | 47.32                                    | 7.56                          | 15.98                                      | -0.66                         |
| 2004                  | 6.51                                  | 11,650                           | 55.72                                   | 5.26                          | 18.68   | 24.58                         | 59.94                                    | 15.73                         | 56.49                                    | 17.64                         | 15.47                                      | 1.13                          |
| 2005                  | 5.42                                  | 12,092                           | 56.10                                   | 3.36                          | 18.29   | 2.43                          | 60.62                                    | 7.62                          | 56.44                                    | 2.90                          | 15.26                                      | 0.42                          |
| 2006                  | 5.62                                  | 12,641                           | 54.96                                   | 1.79                          | 18.83   | 4.57                          | 65.79                                    | 11.38                         | 60.03                                    | 4.66                          | 14.67                                      | -0.63                         |
| 2007                  | 6.52                                  | 13,407                           | 53.69                                   | 2.42                          | 18.66   | 1.88                          | 69.74                                    | 10.45                         | 61.79                                    | 2.89                          | 14.34                                      | 2.20                          |
| 2008                  | 0.70                                  | 13,151                           | 55.21                                   | -1.69                         | 17.37   | -14.15                        | 70.19                                    | 0.55                          | 65.00                                    | -4.13                         | 15.14                                      | 1.54                          |
| 2009                  | -1.57                                 | 12,962                           | 55.36                                   | 0.01                          | 14.94   | -15.32                        | 60.39                                    | -8.42                         | 51.51                                    | -13.22                        | 15.86                                      | 3.22                          |
| 2010                  | 10.63                                 | 14,119                           | 53.10                                   | 3.76                          | 17.68   | 27.63                         | 70.92                                    | 25.67                         | 63.85                                    | 28.03                         | 14.86                                      | 1.05                          |
| 2011                  | 3.80                                  | 14,312                           | 54.49                                   | 3.12                          | 17.88   | 1.20                          | 72.80                                    | 4.20                          | 66.08                                    | -0.46                         | 15.15                                      | 1.95                          |
| 2012                  | 2.06                                  | 14,687                           | 54.71                                   | 1.82                          | 17.48   | -0.35                         | 70.44                                    | 0.41                          | 62.99                                    | -1.78                         | 15.35                                      | 2.16                          |
| 2013                  | 2.20                                  | 15,231                           | 54.16                                   | 2.34                          | 17.63   | 7.09                          | 69.46                                    | 3.50                          | 60.41                                    | 3.40                          | 14.72                                      | -0.79                         |
| 2014r                 | 4.02                                  | 16,112                           | 53.31                                   | 3.44                          | 17.51   | 3.58                          | 69.85                                    | 5.86                          | 59.55                                    | 5.67                          | 14.54                                      | 3.66                          |
| 2015r                 | 0.72                                  | 16,759                           | 52.27                                   | 2.68                          | 17.07   | 2.97                          | 64.30                                    | -0.34                         | 51.48                                    | 1.19                          | 13.97                                      | -0.26                         |
| 2016f                 | 1.35                                  | 17,047                           | 52.79                                   | 1.94                          | 17.17   | 1.88                          | 62.49                                    | 1.54                          | 50.47                                    | 2.47                          | 14.24                                      | 2.43                          |
| 2017f                 | 1.87                                  | 17,381                           | 52.96                                   | 1.74                          | 17.30   | 2.00                          | 63.63                                    | 3.83                          | 51.79                                    | 3.85                          | 14.04                                      | 0.06                          |
| 2016 1r               | -0.23                                 | 4,261                            | 52.64                                   | 2.64                          | 17.22   | 0.22                          | 58.99                                    | -3.88                         | 46.47                                    | -1.39                         | 15.58                                      | 6.34                          |
| 2r                    | 1.13                                  | 4,147                            | 53.63                                   | 1.59                          | 17.23   | 1.16                          | 63.14                                    | 0.21                          | 51.50                                    | -0.29                         | 13.47                                      | 2.03                          |
| 3p                    | 2.03                                  | 4,282                            | 53.12                                   | 2.46                          | 18.49   | 3.62                          | 62.95                                    | 3.59                          | 51.90                                    | 5.27                          | 13.89                                      | 3.56                          |
| 4r                    | 2.37                                  | 4,358                            | 51.81                                   | 1.06                          | 15.77   | 2.42                          | 64.83                                    | 5.85                          | 51.98                                    | 6.05                          | 14.01                                      | -1.46                         |
| 2017 1f               | 2.25                                  | 4,319                            | 53.01                                   | 1.65                          | 17.59   | 2.73                          | 59.87                                    | 4.83                          | 48.26                                    | 5.19                          | 15.10                                      | -2.43                         |
| 2f                    | 2.07                                  | 4,244                            | 53.64                                   | 1.74                          | 17.29   | 2.26                          | 65.27                                    | 6.00                          | 53.12                                    | 5.43                          | 13.17                                      | -0.03                         |
| 3f                    | 1.59                                  | 4,376                            | 53.23                                   | 1.73                          | 18.42   | 0.94                          | 64.15                                    | 3.15                          | 52.92                                    | 3.01                          | 13.56                                      | -0.84                         |
| 4f                    | 1.60                                  | 4,442                            | 52.01                                   | 1.83                          | 15.92   | 2.19                          | 65.22                                    | 1.69                          | 52.84                                    | 2.03                          | 14.30                                      | 3.20                          |

資料來源：行政院主計總處，「國民所得統計及國內經濟情勢展望」，2016年11月25日；

- 註：1. 以上所列為政府發佈資料，本院對GDP的預測列於本刊第一部份臺灣總體經濟預測。  
2. 2014年第2季(含)以前歷年各季資料均已依5年修正結果追溯修正。  
3. 2014年11月起主計總處由定基法改以連鎖法衡量經濟成長率。

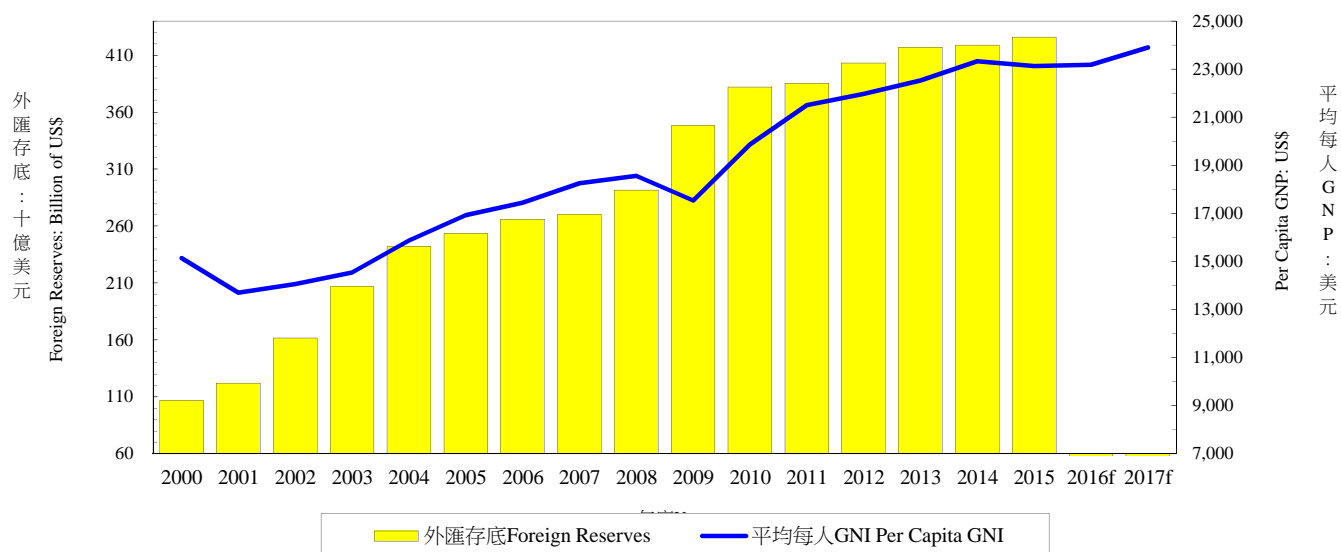
Source：Directorate General of Budget, Accounting and Statistics, Executive Yuan, R.O.C..

表一：主要總體經濟指標

Table 1. GDP Components by Expenditure

外匯存底及平均每人GNI

Total Foreign Reserves & Per Capita GNI



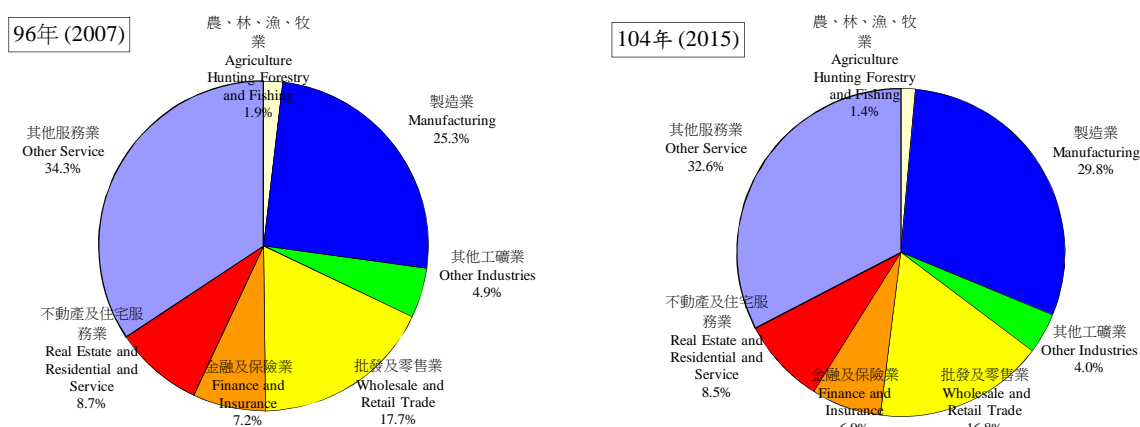
| 年與季<br>Year & Quarter | 公營事業固定投資<br>Public Enter. Gross Fixed<br>Capita Formation |  | 政府固定投資<br>Government Gross<br>Fixed Capita Formation |  | 存貨增加<br>Increase in Stocks |   | 國外要素所得淨額<br>Net Factor Income from the<br>Rest of the World |   | 平均每人<br>GNI<br>(美元)<br>Per Capita GNI<br>(US\$) | 外匯存底<br>(十億美元)<br>Total Foreign<br>Reserves<br>(Billion of US\$) |
|-----------------------|---|--|--|--|----------------------------|---|---|---|---|--|
|                       | 占<br>GDP<br>/GDP<br>(%)                                   | 年增率<br>Annual Rate<br>of Change<br>(%) | 占<br>GDP<br>/GDP<br>(%)                              | 年增率<br>Annual Rate<br>of Change<br>(%) | 占<br>GDP<br>/GDP<br>(%)    | 新台幣<br>百萬<br>(以2011年為參考<br>年之連鎖值)<br>NT Mil | 占<br>GDP<br>/GDP<br>(%)                                     | 新台幣<br>百萬<br>(以2011年為參考<br>年之連鎖值)<br>NT Mil |   |  |
| 2000                  | 2.39  | -3.56                                  | 5.44   | -3.50                                  | 0.89                       | 98,430                                      | 1.69  | 154,869                                     | 15,142  | 106.7  |
| 2001                  | 2.43  | 0.68                                   | 5.07   | -8.26                                  | -0.62                      | -75,925                                     | 2.36  | 213,487                                     | 13,703  | 122.2  |
| 2002                  | 2.23  | -2.97                                  | 4.42   | -9.69                                  | -0.41                      | -46,186                                     | 2.83  | 270,147                                     | 14,062  | 161.7  |
| 2003                  | 2.11  | -4.42                                  | 4.35   | -2.73                                  | 0.11                       | 12,710                                      | 3.69  | 367,375                                     | 14,544  | 206.6  |
| 2004                  | 1.66  | -19.36                                 | 4.16   | -7.04                                  | 0.86                       | 86,782                                      | 3.86  | 409,490                                     | 15,879  | 241.7  |
| 2005                  | 1.77  | 12.77                                  | 4.12   | 2.65                                   | 0.28                       | 33,677                                      | 2.81  | 313,759                                     | 16,930  | 253.3  |
| 2006                  | 1.59  | -7.73                                  | 3.81   | -8.00                                  | 0.38                       | 42,769                                      | 2.82  | 333,420                                     | 17,446  | 266.1  |
| 2007                  | 1.57  | 2.20                                   | 3.68   | -2.80                                  | 0.12                       | 16,971                                      | 2.79  | 350,310                                     | 18,256  | 270.3  |
| 2008                  | 1.65  | -1.98                                  | 4.13   | 0.44                                   | 1.30                       | 166,513                                     | 2.53  | 320,632                                     | 18,564  | 291.7  |
| 2009                  | 1.78  | 2.37                                   | 4.59   | 14.07                                  | -1.40                      | -193,262                                    | 3.40  | 423,658                                     | 17,531  | 348.2  |
| 2010                  | 1.77  | 7.49                                   | 4.17   | -2.92                                  | 1.34                       | 196,426                                     | 3.16  | 435,627                                     | 19,864  | 382.0  |
| 2011                  | 1.54  | -13.44                                 | 3.97   | -5.78                                  | 0.25                       | 35,921                                      | 2.71  | 388,372                                     | 21,507  | 385.5  |
| 2012                  | 1.39  | -7.42                                  | 3.48   | -10.95                                 | 0.15                       | 22,029                                      | 3.05  | 445,579                                     | 21,967  | 403.2  |
| 2013                  | 1.32  | 2.99                                   | 3.23   | -2.79                                  | -0.12                      | -18,535                                     | 2.76  | 411,781                                     | 22,526  | 416.8  |
| 2014r                 | 1.31  | 4.95                                   | 2.87   | -7.52                                  | 0.17                       | 27,323                                      | 2.91  | 452,196                                     | 23,330  | 419.0  |
| 2015r                 | 1.14  | -7.21                                  | 2.63   | -2.41                                  | 0.09                       | 15,303                                      | 3.44  | 538,405                                     | 23,131  | 426.0  |
| 2016f                 | 1.15  | 1.35                                   | 2.62   | 2.36                                   | 0.01                       | 1,007                                       | --  | --  | 23,231  | --   |
| 2017f                 | 1.15  | 1.73                                   | 2.62   | 1.19                                   | 0.09                       | 15,098                                      | --  | --  | 23,905  | --   |
| 2016 1r               | 0.64  | -5.07                                  | 1.91   | -1.70                                  | -0.51                      | -21,890                                     | 4.96  | 187,765                                     | 5,688   | 431.6  |
| 2r                    | 1.17  | -2.50                                  | 2.46   | -5.09                                  | 0.41                       | 16,860                                      | 2.82  | 109,787                                     | 5,590   | 433.6  |
| 3p                    | 0.94  | -6.38                                  | 2.55   | 4.66                                   | -0.03                      | -1,450                                      | 3.13  | 126,195                                     | 5,918   | 436.7  |
| 4r                    | 1.84  | 11.03                                  | 3.55   | 8.47                                   | 0.17                       | 7,487                                       | --  | --  | 6,035   | 434.3  |
| 2017 1f               | 0.65  | 2.50                                   | 1.96   | 3.42                                   | 0.08                       | 3,421                                       | --  | --  | 6,009   | --   |
| 2f                    | 1.17  | 1.82                                   | 2.50   | 3.81                                   | 0.09                       | 3,733                                       | --  | --  | 5,806   | --   |
| 3f                    | 0.95  | 2.47                                   | 2.54   | 1.16                                   | 0.08                       | 3,365                                       | --  | --  | 5,992   | --   |
| 4f                    | 1.84  | 1.06                                   | 3.44   | -1.61                                  | 0.10                       | 4,579                                       | --  | --  | 6,098   | --   |

資料來源：行政院主計總處，「國民所得統計及國內經濟情勢展望」，2016年11月25日。

- 註：1. 以上所列为政府發佈資料，本院對GDP的預測列於本刊第一部份臺灣總體經濟預測。  
2. 2014年第2季(含)以前歷年各季資料均已依5年修正結果追溯修正。  
3. 2014年11月起主計總處由定基法改以連鎖法衡量經濟成長率。

Source：Directorate General of Budget, Accounting and Statistics, Executive Yuan, R.O.C.; Central Bank of Republic of China (Taiwan).

表二：各業產值概況  
Table 2. GDP Components by Industry  
GDP各產業產值及成長率  
GDP Products Value & Growth Rate



註：本圖型因未加上進口稅、加值型營業稅及減掉設算銀行服務費，所佔百分比與下表佔GDP百分比有些微差異。

Note: Import duties, Value added taxes and imputed bank services charge are not included; therefore the percentage is different from the table.

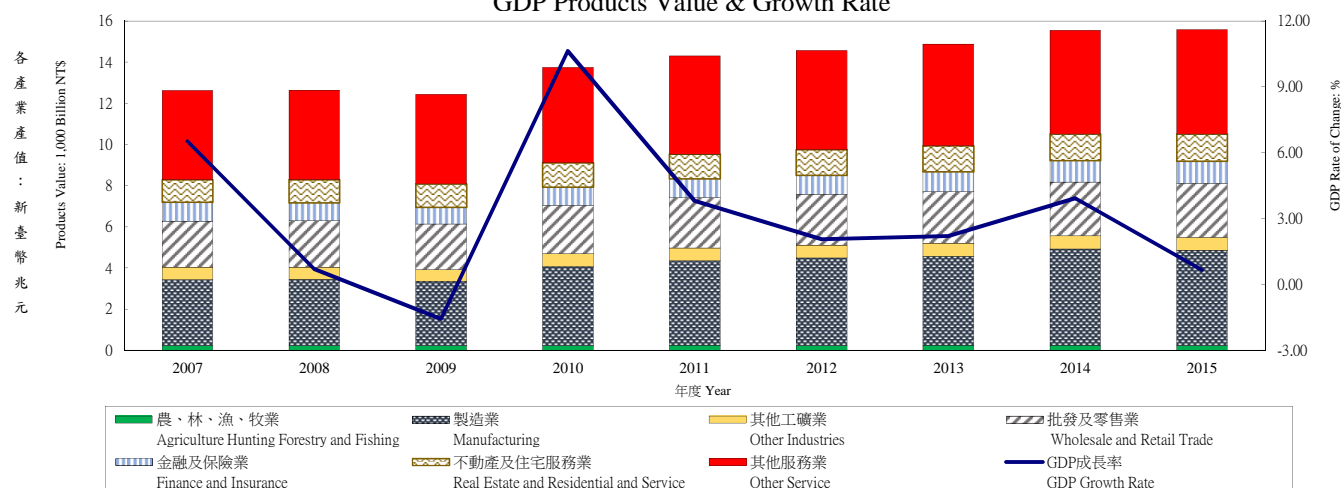
| 年與季<br>Year &<br>Quarter | 產業 Sector     |                               |                                   |                               |                                   |                               |  |                               |                              |                               |   |                               |   |                               |                   |                               |
|--------------------------|---------------|-------------------------------|-----------------------------------|-------------------------------|-----------------------------------|-------------------------------|--|-------------------------------|------------------------------|-------------------------------|---|-------------------------------|---|-------------------------------|-------------------|-------------------------------|
|                          | 服務業 Services  |                               |                                   |                               |                                   |                               |  |                               |                              |                               |   |                               |   |                               |                   |                               |
|                          | 合計 Sub-Total  |                               | 批發及零售業 Wholesale and Retail Trade |                               | 運輸及倉儲業 Transportation and Storage |                               | 資訊及通訊傳播業 Information and Communication |                               | 金融及保險業 Finance and Insurance |                               | 不動產及住宅服務業 Real Estate and Residential and Service |                               | 公共行政及國防：強制性社會安全 Public Administration and Defence; Compulsory Social Security |                               | 其他 Other Services |                               |
|                          | 估GDP /GDP (%) | 年增率 Annual Rate of Change (%) | 估GDP /GDP (%)                     | 年增率 Annual Rate of Change (%) | 估GDP /GDP (%)                     | 年增率 Annual Rate of Change (%) | 估GDP /GDP (%)                          | 年增率 Annual Rate of Change (%) | 估GDP /GDP (%)                | 年增率 Annual Rate of Change (%) | 估GDP /GDP (%)                                     | 年增率 Annual Rate of Change (%) | 估GDP /GDP (%)   | 年增率 Annual Rate of Change (%) | 估GDP /GDP (%)     | 年增率 Annual Rate of Change (%) |
| 2007                     | 65.59         | --                            | 16.68                             | --                            | 3.01                              | --                            | 3.21                                   | --                            | 7.13                         | --                            | 8.43  | --                            | 7.16  | --                            | 18.90             | --                            |
| 2008                     | 67.15         | 0.75                          | 17.30                             | 2.25                          | 2.92                              | 0.31                          | 3.34                                   | 4.73                          | 7.01                         | -3.66                         | 8.67  | 0.52                          | 7.60  | 0.97                          | 19.52             | 0.46                          |
| 2009                     | 66.82         | -0.69                         | 17.02                             | -1.91                         | 2.79                              | -3.40                         | 3.44                                   | 4.30                          | 6.23                         | -7.17                         | 9.07  | 1.95                          | 7.76  | 0.82                          | 20.02             | -0.13                         |
| 2010                     | 64.63         | 5.80                          | 16.67                             | 6.44                          | 3.01                              | 6.99                          | 3.26                                   | 9.02                          | 6.19                         | 7.33                          | 8.50  | 3.18                          | 7.35  | 3.10                          | 19.42             | 6.85                          |
| 2011                     | 65.27         | 3.02                          | 17.07                             | 4.02                          | 2.78                              | 2.84                          | 3.23                                   | 4.26                          | 6.39                         | 4.04                          | 8.47  | 1.10                          | 7.37  | 0.03                          | 19.96             | 3.96                          |
| 2012                     | 65.58         | 1.27                          | 16.88                             | 1.10                          | 2.87                              | 1.83                          | 3.18                                   | 3.05                          | 6.42                         | 1.09                          | 8.55  | 1.81                          | 7.41  | 0.70                          | 20.27             | 1.11                          |
| 2013                     | 64.85         | 2.29                          | 16.97                             | 1.61                          | 2.79                              | 7.64                          | 3.08                                   | 3.39                          | 6.41                         | 4.00                          | 8.49  | 2.95                          | 7.01  | -0.65                         | 20.09             | 2.17                          |
| 2014r                    | 63.41         | 3.25                          | 16.41                             | 4.23                          | 2.87                              | 0.86                          | 2.96                                   | 3.16                          | 6.53                         | 7.62                          | 8.20  | 2.06                          | 6.65  | -0.24                         | 19.79             | 3.10                          |
| 2015r                    | 63.17         | 1.14                          | 16.37                             | 0.27                          | 3.06                              | -0.26                         | 2.92                                   | 4.71                          | 6.56                         | 3.78                          | 8.16  | 2.08                          | 6.41  | 0.05                          | 19.70             | 0.62                          |
| 2011 1                   | 64.89         | 5.33                          | 16.53                             | 8.02                          | 2.82                              | 2.50                          | 3.04                                   | 5.61                          | 6.10                         | 6.19                          | 8.27  | 3.08                          | 8.26  | 1.01                          | 19.87             | 5.58                          |
| 2011 2                   | 64.54         | 3.09                          | 16.99                             | 4.36                          | 2.61                              | 1.77                          | 3.13                                   | 1.60                          | 6.90                         | 5.88                          | 8.54  | 1.13                          | 6.97  | -0.27                         | 19.41             | 3.53                          |
| 2011 3                   | 64.75         | 2.73                          | 16.58                             | 3.83                          | 2.78                              | 3.51                          | 3.32                                   | 5.84                          | 6.57                         | 4.94                          | 8.14  | 0.50                          | 7.36  | -1.56                         | 19.99             | 3.12                          |
| 2011 4                   | 66.86         | 1.09                          | 18.20                             | 0.27                          | 2.92                              | 3.57                          | 3.42                                   | 3.92                          | 6.02                         | -0.89                         | 8.92  | -0.16                         | 6.86  | 1.12                          | 20.53             | 2.31                          |
| 2012 1                   | 67.13         | 0.88                          | 16.83                             | 0.33                          | 2.88                              | 2.31                          | 3.13                                   | 5.15                          | 6.38                         | 2.55                          | 8.28  | -1.94                         | 8.77  | 2.37                          | 20.86             | 0.68                          |
| 2012 2                   | 65.21         | 1.54                          | 16.82                             | 1.04                          | 2.70                              | 1.11                          | 3.11                                   | 4.53                          | 6.92                         | 0.51                          | 8.66  | 2.33                          | 7.13  | 1.41                          | 19.86             | 1.57                          |
| 2012 3                   | 63.74         | 1.01                          | 15.98                             | 0.61                          | 2.92                              | 1.87                          | 3.21                                   | 1.90                          | 6.37                         | -0.97                         | 8.18  | 2.88                          | 7.11  | -1.38                         | 19.97             | 1.81                          |
| 2012 4                   | 66.29         | 1.65                          | 17.89                             | 2.34                          | 2.97                              | 1.99                          | 3.27                                   | 0.96                          | 6.04                         | 2.53                          | 9.08  | 3.86                          | 6.66  | 0.50                          | 20.39             | 0.39                          |
| 2013 1                   | 66.65         | 2.02                          | 16.94                             | 1.68                          | 2.82                              | 6.15                          | 3.05                                   | 2.64                          | 6.27                         | 0.94                          | 8.41  | 4.34                          | 8.43  | -0.08                         | 20.72             | 1.83                          |
| 2013 2                   | 64.17         | 1.92                          | 16.72                             | 0.46                          | 2.58                              | 7.94                          | 3.04                                   | 4.31                          | 6.94                         | 4.82                          | 8.61  | 3.28                          | 6.81  | -0.01                         | 19.46             | 1.07                          |
| 2013 3                   | 62.99         | 1.70                          | 16.10                             | 0.53                          | 2.84                              | 7.10                          | 3.08                                   | 2.66                          | 6.35                         | 3.75                          | 8.06  | 1.57                          | 6.65  | -1.43                         | 19.91             | 2.16                          |
| 2013 4                   | 65.64         | 3.46                          | 18.11                             | 3.56                          | 2.90                              | 9.32                          | 3.15                                   | 3.99                          | 6.10                         | 6.48                          | 8.90  | 2.68                          | 6.20  | -1.07                         | 20.28             | 3.51                          |
| 2014 1r                  | 65.38         | 3.00                          | 16.44                             | 3.59                          | 2.84                              | 1.87                          | 2.99                                   | 3.84                          | 6.40                         | 7.20                          | 8.21  | 2.11                          | 8.07  | -0.35                         | 20.43             | 2.75                          |
| 2014 2r                  | 62.59         | 3.55                          | 16.24                             | 5.72                          | 2.55                              | 3.32                          | 2.93                                   | 3.50                          | 7.08                         | 7.61                          | 8.25  | 1.46                          | 6.38  | -0.75                         | 19.17             | 2.88                          |
| 2014 3r                  | 61.89         | 3.90                          | 15.53                             | 4.65                          | 2.94                              | 1.37                          | 2.92                                   | 2.07                          | 6.76                         | 12.31                         | 7.77  | 2.16                          | 6.31  | -0.06                         | 19.66             | 3.48                          |
| 2014 4r                  | 63.84         | 2.58                          | 17.41                             | 3.13                          | 3.12                              | -2.86                         | 3.01                                   | 3.28                          | 5.92                         | 3.17                          | 8.57  | 2.47                          | 5.90  | 0.22                          | 19.92             | 3.25                          |
| 2015 1r                  | 63.59         | 1.80                          | 16.03                             | 2.20                          | 3.23                              | 0.36                          | 2.86                                   | 3.17                          | 6.20                         | 3.44                          | 7.91  | 2.31                          | 7.56  | 0.18                          | 19.80             | 1.32                          |
| 2015 2r                  | 62.43         | 1.13                          | 16.15                             | 0.03                          | 2.81                              | 1.13                          | 2.88                                   | 4.24                          | 7.19                         | 5.34                          | 8.22  | 2.09                          | 6.15  | 0.10                          | 19.01             | 0.02                          |
| 2015 3r                  | 61.98         | 0.29                          | 15.58                             | -1.19                         | 3.03                              | -2.28                         | 2.93                                   | 5.46                          | 6.63                         | -0.47                         | 7.79  | 1.55                          | 6.19  | 0.87                          | 19.82             | 0.45                          |
| 2015 4r                  | 64.65         | 1.33                          | 17.68                             | -0.06                         | 3.14                              | -0.30                         | 3.01                                   | 5.86                          | 6.25                         | 7.18                          | 8.72  | 2.35                          | 5.72  | -0.99                         | 20.13             | 0.71                          |
| 2016 1r                  | 64.23         | 0.73                          | 15.84                             | -1.71                         | 3.18                              | -1.37                         | 2.84                                   | 4.34                          | 6.35                         | 3.11                          | 7.98  | 1.04                          | 7.58  | 0.05                          | 20.46             | 1.93                          |
| 2016 2r                  | 62.66         | 1.07                          | 15.83                             | -0.78                         | 2.77                              | 2.01                          | 2.84                                   | 3.60                          | 7.25                         | 2.47                          | 8.33  | 1.66                          | 6.18  | 0.24                          | 19.46             | 1.67                          |
| 2016 3p                  | 61.62         | 1.48                          | 15.41                             | 1.58                          | 3.00                              | 5.12                          | 2.83                                   | 2.48                          | 6.64                         | 3.25                          | 7.82  | 1.52                          | 6.07  | -0.21                         | 19.85             | 0.81                          |

資料來源：行政院主計總處，「國民所得統計及國內經濟情勢展望」，2016年11月25日。

- 註：1. 其他包含住宿及餐飲業、專業、科學及技術服務業、支援服務業、教育服務業、醫療保健及社會工作服務業、藝術、娛樂及休閒服務業、其他服務業、進口稅及加值型營業稅。  
2. 2014年第2季(含)以前歷年各季資料均已依5年修正結果追溯修正。  
3. 2014年11月起主計總處由定基法改以連鎖法衡量經濟成長率。

Source : Directorate General of Budget, Accounting and Statistics, Executive Yuan, R.O.C..

表二：各業產值概況  
Table 2. GDP Components by Industry  
GDP各產業產值及成長率  
GDP Products Value & Growth Rate



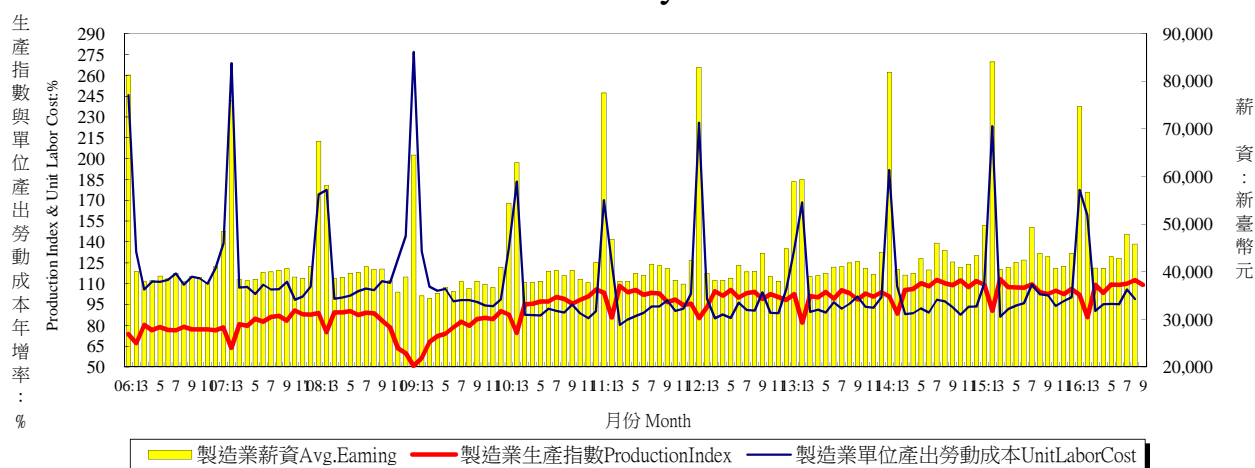
| 年與季<br>Year &<br>Quarter | 國內<br>生產毛額<br>GDP<br>(新臺幣<br>十億元)<br>以2011年為參<br>考年之連鎖值<br>計算GDP<br>(Bil. NTS) | GDP<br>成長率<br>GDP<br>Rate of<br>Change<br>(%) | 產業 Sector   |   |                                  |   |                      |   |   |   |  |   |                     |   |                     |   |                     |   |
|--------------------------|--|---|---|---|----------------------------------|---|----------------------|---|---|---|--|---|---------------------|---|---------------------|---|---------------------|---|
|                          |  |   | 農、林、漁、牧業<br>Agriculture Hunting<br>Forestry and Fishing |   | 工業 Industries                    |   |                      |   |   |   |  |   |                     |   |                     |   | 營造業<br>Construction |   |
|                          |  |   | 合計<br>Sub Total   |   | 礦業及土石採取業<br>Mining and Quarrying |   | 製造業<br>Manufacturing |   | 電力及燃氣供應業<br>Electricity and Gas<br>Supply |   | 用水供應及污染整治業<br>Water Supply and<br>Remediation Services |   |                     |   |                     |   |                     |   |
|                          |  |   | 占GDP<br>/GDP<br>(%)                                     | 年增率<br>Annual<br>Rate of<br>Change<br>(%) | 占GDP<br>/GDP<br>(%)              | 年增率<br>Annual<br>Rate of<br>Change<br>(%) | 占GDP<br>/GDP<br>(%)  | 年增率<br>Annual<br>Rate of<br>Change<br>(%) | 占GDP<br>/GDP<br>(%)                       | 年增率<br>Annual<br>Rate of<br>Change<br>(%) | 占GDP<br>/GDP<br>(%)                                    | 年增率<br>Annual<br>Rate of<br>Change<br>(%) | 占GDP<br>/GDP<br>(%) | 年增率<br>Annual<br>Rate of<br>Change<br>(%) | 占GDP<br>/GDP<br>(%) | 年增率<br>Annual<br>Rate of<br>Change<br>(%) | 占GDP<br>/GDP<br>(%) | 年增率<br>Annual<br>Rate of<br>Change<br>(%) |
| 2007                     | 12,573   | 6.52  | 1.45  | -0.02                                     | 34.04                            | 11.07                                     | 0.16                 | -0.20                                     | 29.59                                     | 12.92                                     | 1.02   | -7.29                                     | 0.69                | 10.66                                     | 2.57                | 1.06                                      |                     |   |
| 2008                     | 12,661   | 0.70  | 1.55  | 0.02                                      | 32.09                            | -0.37                                     | 0.17                 | -9.20                                     | 28.27                                     | 0.42                                      | 0.31   | -1.03                                     | 0.70                | 4.59                                      | 2.65                | -9.12                                     |                     |   |
| 2009                     | 12,463   | -1.57   | 1.68  | -2.60                                     | 31.99                            | -2.86                                     | 0.13                 | -10.07                                    | 27.21                                     | -2.51                                     | 1.47   | 26.63                                     | 0.69                | 1.24                                      | 2.48                | -10.16                                    |                     |   |
| 2010                     | 13,788   | 10.63   | 1.60  | 2.25                                      | 33.99                            | 20.83                                     | 0.13                 | 44.39                                     | 29.29                                     | 22.66                                     | 1.30   | 4.80                                      | 0.68                | 4.43                                      | 2.60                | 13.68                                     |                     |   |
| 2011                     | 14,312   | 3.80  | 1.72  | 4.52                                      | 33.02                            | 5.98                                      | 0.12                 | -4.80                                     | 28.66                                     | 6.79                                      | 0.88   | 2.79                                      | 0.68                | -1.73                                     | 2.68                | 0.99                                      |                     |   |
| 2012                     | 14,608   | 2.06  | 1.67  | -3.20                                     | 32.75                            | 3.29                                      | 0.11                 | -1.01                                     | 28.37                                     | 3.72                                      | 0.93   | 1.69                                      | 0.69                | 6.38                                      | 2.65                | -1.39                                     |                     |   |
| 2013                     | 14,929   | 2.20  | 1.69  | 1.35                                      | 33.46                            | 1.67                                      | 0.10                 | -4.18                                     | 28.75                                     | 1.70                                      | 1.33   | 3.12                                      | 0.66                | 2.26                                      | 2.61                | 0.93                                      |                     |   |
| 2014r                    | 15,530   | 4.02  | 1.80  | 1.55                                      | 34.79                            | 7.23                                      | 0.10                 | -4.35                                     | 29.99                                     | 8.17                                      | 1.50   | 1.87                                      | 0.63                | 4.62                                      | 2.56                | 0.76                                      |                     |   |
| 2015r                    | 15,641   | 0.72  | 1.70  | -8.26                                     | 35.13                            | -1.05                                     | 0.10                 | -6.58                                     | 30.05                                     | -0.85                                     | 1.85   | -5.45                                     | 0.61                | -0.03                                     | 2.52                | -0.88                                     |                     |   |
| 2011 1                   | 3,437  | 7.37  | 1.55  | 5.51                                      | 33.56                            | 14.60                                     | 0.12                 | 6.42                                      | 29.03                                     | 15.97                                     | 1.00   | 8.41                                      | 0.56                | -3.46                                     | 2.84                | 6.09                                      |                     |   |
| 2011 2                   | 3,561  | 4.28  | 1.87  | 4.63                                      | 33.58                            | 9.13                                      | 0.12                 | -2.50                                     | 29.09                                     | 9.96                                      | 0.83   | -7.11                                     | 0.77                | -3.59                                     | 2.79                | 5.83                                      |                     |   |
| 2011 3                   | 3,674  | 3.32  | 1.54  | 1.73                                      | 33.71                            | 3.43                                      | 0.11                 | -8.99                                     | 29.20                                     | 4.46                                      | 1.15   | -7.70                                     | 0.70                | -4.91                                     | 2.55                | -1.06                                     |                     |   |
| 2011 4                   | 3,640  | 0.68  | 1.91  | 6.01                                      | 31.23                            | -0.88                                     | 0.14                 | -8.34                                     | 27.34                                     | -0.67                                     | 0.53   | 16.88                                     | 0.68                | -2.73                                     | 2.53                | -4.19                                     |                     |   |
| 2012 1                   | 3,464  | 0.78  | 1.54  | -4.76                                     | 31.33                            | 0.57                                      | 0.11                 | -0.53                                     | 27.05                                     | 0.79                                      | 0.68   | -5.53                                     | 0.63                | 9.11                                      | 2.86                | -2.71                                     |                     |   |
| 2012 2                   | 3,576  | 0.42  | 1.86  | -2.59                                     | 32.93                            | 1.89                                      | 0.10                 | 1.11                                      | 29.04                                     | 2.26                                      | 0.27   | -13.70                                    | 0.79                | 6.93                                      | 2.73                | -1.97                                     |                     |   |
| 2012 3                   | 3,759  | 2.31  | 1.64  | 0.57                                      | 34.63                            | 4.47                                      | 0.09                 | -2.45                                     | 29.80                                     | 5.29                                      | 1.51   | -8.73                                     | 0.70                | 5.62                                      | 2.53                | -0.43                                     |                     |   |
| 2012 4                   | 3,808  | 4.63  | 1.64  | -5.62                                     | 32.07                            | 5.98                                      | 0.12                 | -1.94                                     | 27.58                                     | 6.24                                      | 1.22   | 25.64                                     | 0.66                | 4.39                                      | 2.48                | -0.19                                     |                     |   |
| 2013 1                   | 3,514  | 1.46  | 1.59  | -3.27                                     | 31.76                            | 1.27                                      | 0.11                 | -2.84                                     | 27.13                                     | 1.13                                      | 1.05   | 1.07                                      | 0.60                | 1.67                                      | 2.87                | 2.23                                      |                     |   |
| 2013 2                   | 3,666  | 2.51  | 1.81  | 6.01                                      | 34.02                            | 1.38                                      | 0.10                 | -2.31                                     | 29.53                                     | 1.50                                      | 1.04   | 2.12                                      | 0.75                | 3.60                                      | 2.61                | 0.07                                      |                     |   |
| 2013 3                   | 3,815  | 1.47  | 1.52  | -3.39                                     | 35.49                            | 2.18                                      | 0.09                 | -6.25                                     | 30.42                                     | 2.26                                      | 1.80   | 7.31                                      | 0.68                | 3.05                                      | 2.50                | 0.12                                      |                     |   |
| 2013 4                   | 3,934  | 3.31  | 1.82  | 4.76                                      | 32.54                            | 1.78                                      | 0.11                 | -5.19                                     | 27.90                                     | 1.81                                      | 1.42   | 2.19                                      | 0.63                | 0.70                                      | 2.48                | 1.41                                      |                     |   |
| 2014 1r                  | 3,649  | 3.84  | 1.93  | 4.90                                      | 32.70                            | 5.03                                      | 0.10                 | -10.31                                    | 27.76                                     | 5.43                                      | 1.47   | 11.82                                     | 0.57                | 4.46                                      | 2.79                | 0.63                                      |                     |   |
| 2014 2r                  | 3,824  | 4.31  | 2.02  | -0.27                                     | 35.39                            | 7.46                                      | 0.10                 | -4.71                                     | 30.70                                     | 8.34                                      | 1.31   | 16.84                                     | 0.71                | 3.51                                      | 2.57                | 1.10                                      |                     |   |
| 2014 3r                  | 3,982  | 4.39  | 1.53  | -3.64                                     | 36.59                            | 8.38                                      | 0.09                 | -1.88                                     | 31.36                                     | 9.56                                      | 2.03   | 4.83                                      | 0.65                | 4.89                                      | 2.45                | -0.25                                     |                     |   |
| 2014 4r                  | 4,074  | 3.56  | 1.73  | 4.97                                      | 34.43                            | 7.76                                      | 0.12                 | -0.91                                     | 30.06                                     | 8.94                                      | 1.20   | -12.15                                    | 0.60                | 5.56                                      | 2.45                | 1.78                                      |                     |   |
| 2015 1r                  | 3,795  | 4.01  | 1.61  | -3.24                                     | 34.80                            | 5.71                                      | 0.11                 | 1.00                                      | 29.87                                     | 6.92                                      | 1.59   | -2.56                                     | 0.54                | -0.55                                     | 2.68                | -0.78                                     |                     |   |
| 2015 2r                  | 3,850  | 0.66  | 1.77  | -9.04                                     | 35.80                            | -0.52                                     | 0.10                 | -5.69                                     | 30.78                                     | -0.19                                     | 1.67   | -5.43                                     | 0.68                | -0.83                                     | 2.57                | -0.32                                     |                     |   |
| 2015 3r                  | 3,954  | -0.70   | 1.60  | -6.99                                     | 36.42                            | -3.64                                     | 0.08                 | -10.15                                    | 30.81                                     | -3.81                                     | 2.45   | -4.16                                     | 0.64                | 0.43                                      | 2.44                | -1.51                                     |                     |   |
| 2015 4r                  | 4,042  | -0.79   | 1.80  | -12.21                                    | 33.54                            | -4.68                                     | 0.11                 | -10.39                                    | 28.76                                     | -4.94                                     | 1.67   | -8.43                                     | 0.60                | 0.70                                      | 2.40                | -0.90                                     |                     |   |
| 2016 1r                  | 3,787  | -0.23   | 1.80  | -10.64                                    | 33.97                            | -2.85                                     | 0.09                 | -15.08                                    | 29.14                                     | -2.94                                     | 1.66   | 1.52                                      | 0.53                | -0.70                                     | 2.55                | -4.40                                     |                     |   |
| 2016 2r                  | 3,893  | 1.13  | 1.95  | -8.56                                     | 35.39                            | 0.50                                      | 0.09                 | -6.09                                     | 30.35                                     | 0.29                                      | 1.78   | 16.25                                     | 0.71                | 0.74                                      | 2.46                | -2.24                                     |                     |   |
| 2016 3p                  | 4,034  | 2.03  | 1.57  | -4.04                                     | 36.81                            | 4.39                                      | 0.07                 | -4.55                                     | 31.61                                     | 5.17                                      | 2.17   | 3.52                                      | 0.68                | 1.57                                      | 2.26                | -2.51                                     |                     |   |

資料來源：行政院主計總處，「國民所得統計及國內經濟情勢展望」，2016年11月25日。

註：1. 以上所列為政府發佈資料，本院對GDP的預測列於本刊第一部份臺灣總體經濟預測。  
2. 2014年第2季(含)以前歷年各季資料均已依5年修正結果追溯修正。

Source：Directorate General of Budget, Accounting and Statistics, Executive Yuan, R.O.C..

表三：生產概況  
Table3. Industry Indicators



| 年與月<br>Year & Month | 製造業生產<br>(基期100年=100)<br>Mfg. Industrial Production<br>(2011=100) |   | 製造業重工業生產<br>(基期100年=100)<br>Heavy Industry Production<br>(2011=100) |   | 製造業輕工業生產<br>(基期100年=100)<br>Light Industry Production<br>(2011=100) |   | 製造業單位產出勞動成本<br>(基期100年=100)<br>Unit labor cost in Manufacturing<br>(2011=100) |   | 製造業薪資<br>Average Earnings of Employees<br>in Manufacturing |  |        |
|---------------------|---|---|---|---|---|---|---|---|--|--|--------|
|                     | 指數<br>Index<br>(%)  | 年增率<br>Annual Rate<br>of<br>Change<br>(%) | 指數<br>Index<br>(%)  | 年增率<br>Annual Rate<br>of<br>Change<br>(%) | 指數<br>Index<br>(%)  | 年增率<br>Annual Rate<br>of<br>Change<br>(%) | 指數<br>Index<br>(%)  | 年增率<br>Annual<br>Rate of<br>Change<br>(%) | 每人每月<br>(元)<br>Wages per Month<br>(NT\$)                   | 年增率<br>Annual Rate of<br>Change<br>(%) |        |
| 2000                | 59.20   | 7.85                                      | -   | -   | -   | -   | 144.75  | -2.37                                     | 38,914   | 3.12                                   |        |
| 2001                | 53.86   | -9.02                                     | -   | -   | -   | -   | 149.85  | 3.52                                      | 38,412   | -1.29                                  |        |
| 2002                | 58.67   | 8.93                                      | -   | -   | -   | -   | 135.84  | -9.35                                     | 38,435   | 0.06                                   |        |
| 2003                | 64.27   | 9.54                                      | -   | -   | -   | -   | 130.53  | -3.91                                     | 39,549   | 2.90                                   |        |
| 2004                | 70.68   | 9.97                                      | -   | -   | -   | -   | 126.56  | -3.04                                     | 40,657   | 2.80                                   |        |
| 2005                | 72.94   | 3.20                                      | -   | -   | -   | -   | 127.30  | 0.58                                      | 41,858   | 2.95                                   |        |
| 2006                | 76.30   | 4.61                                      | -   | -   | -   | -   | 124.89  | -1.89                                     | 42,393   | 1.28                                   |        |
| 2007                | 82.66   | 8.34                                      | 79.17   | 10.39                                     | 101.84  | -0.49                                     | 118.64  | -5.00                                     | 43,178   | 1.85                                   |        |
| 2008                | 81.92   | -0.90                                     | 79.14   | -0.04                                     | 96.83   | -4.92                                     | 120.42  | 1.50                                      | 43,121   | -0.13                                  |        |
| 2009                | 75.53   | -7.80                                     | 72.92   | -7.86                                     | 89.57   | -7.50                                     | 111.31  | -7.57                                     | 39,125   | -9.27                                  |        |
| 2010                | 95.52   | 26.47                                     | 94.76   | 29.95                                     | 99.60   | 11.20                                     | 98.84   | -11.20                                    | 42,300   | 8.12                                   |        |
| 2011                | 100.00  | 4.69                                      | 100.00  | 5.53                                      | 100.00  | 0.40                                      | 100.00  | 1.17                                      | 43,316   | 2.40                                   |        |
| 2012                | 99.68   | -0.32                                     | 99.70   | -0.30                                     | 99.57   | -0.43                                     | 102.25  | 2.25                                      | 43,689   | 0.86                                   |        |
| 2013                | 100.24  | 0.56                                      | 100.52  | 0.82                                      | 98.71   | -0.86                                     | 102.53  | 0.27                                      | 43,829   | 0.32                                   |        |
| 2014                | 106.89  | 6.63                                      | 108.14  | 7.58                                      | 100.19  | 1.50                                      | 101.09  | -1.40                                     | 45,207   | 3.14                                   |        |
| 2015                | 105.30  | -1.49                                     | 106.54  | -1.48                                     | 98.63   | -1.56                                     | 107.38  | 6.22                                      | 46,781   | 3.48                                   |        |
| 2015                | 8   | 103.83                                    | -5.93   | 105.20                                    | -5.88   | 96.47                                     | -6.18   | 102.39                                    | 5.33   | 43,858                                 | -1.54  |
|                     | 9   | 102.51                                    | -5.81   | 103.67                                    | -6.47   | 96.27                                     | -1.79   | 101.70                                    | 9.31   | 43,117                                 | 2.52   |
|                     | 10  | 105.02                                    | -6.50   | 105.83                                    | -7.01   | 100.70                                    | -3.51   | 93.72                                     | 6.96   | 40,680                                 | -0.43  |
|                     | 11  | 102.31                                    | -4.84   | 102.99                                    | -5.76   | 98.63                                     | 0.77  | 97.30                                     | 4.28   | 41,146                                 | -1.04  |
|                     | 12  | 106.02                                    | -5.29   | 106.14                                    | -5.78   | 105.35                                    | -2.54   | 100.15                                    | 6.99   | 43,879                                 | 1.05   |
| 2016                | 1   | 101.86                                    | -6.57   | 102.31                                    | -6.96   | 99.38                                     | -4.43   | 177.44                                    | 61.06  | 74,735                                 | 50.36  |
|                     | 2   | 85.85                                     | -5.13   | 88.14                                     | -5.06   | 73.53                                     | -5.56   | 159.10                                    | -28.79   | 56,609                                 | -32.67 |
|                     | 3   | 109.22                                    | -3.53   | 110.32                                    | -3.94   | 103.28                                    | -1.10   | 90.24                                     | 4.61   | 40,798                                 | 0.88   |
|                     | 4   | 103.26                                    | -3.96   | 104.74                                    | -3.65   | 95.28                                     | -5.75   | 95.18                                     | 3.69   | 40,694                                 | -0.57  |
|                     | 5   | 109.26                                    | 1.85  | 110.74                                    | 1.47  | 101.27                                    | 4.11  | 95.42                                     | 1.13   | 43,107                                 | 2.84   |
|                     | 6   | 109.02                                    | 1.82  | 111.03                                    | 2.26  | 98.20                                     | -0.78   | 95.15                                     | -0.71  | 42,883                                 | 0.98   |
|                     | 7   | 110.00                                    | 0.60  | 112.22                                    | 1.46  | 98.08                                     | -4.39   | 105.67                                    | -3.45  | 47,881                                 | -2.95  |
|                     | 8   | 112.55                                    | 8.40  | 114.11                                    | 8.47  | 104.19                                    | 8.00  | 98.88                                     | -3.43  | 45,835                                 | 4.51   |
|                     | 9   | 108.69                                    | 6.03  | 111.61                                    | 7.66  | 93.02                                     | -3.38   | 97.63                                     | -4.00  | 43,749                                 | 1.47   |
|                     | 10  | 110.97                                    | 5.67  | 113.21                                    | 6.97  | 98.93                                     | -1.76   | -   | -  | -                                      | -      |
|                     | 1-當月  | 106.07                                    | 0.51  | 107.84                                    | 0.85  | 96.52                                     | -1.48   | 111.17                                    | 0.35   | 48,474                                 | 0.14   |

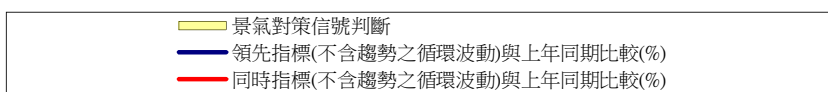
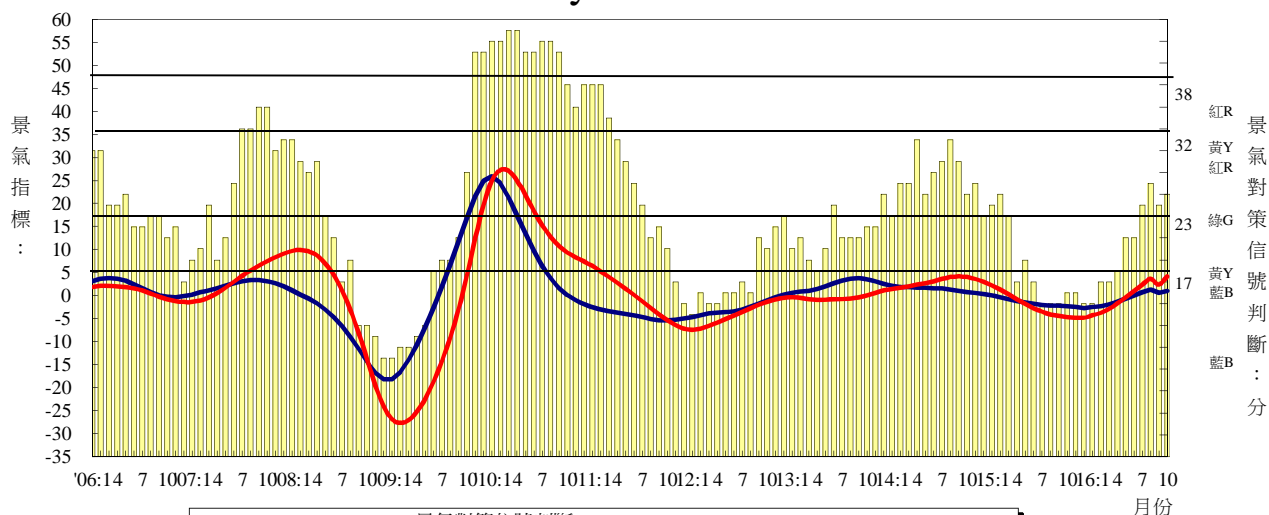
資料來源：經濟部統計處，「105年10月工業生產統計」；行政院主計總處，「105年9月薪資與生產力統計結果」。

Source : Department of Statistics, MOEA, "Industrial Production Indexes in Dec. 2016";  
DGBAS, "Earnings and Productivity Statistics in Sep. 2016".



# 表四：景氣概況

## Table 4. Cyclical Indicators



| 年與月     | 景氣指標     |                 |          |                 | 景氣對策信號判斷 (分) |    |    | 失業率 (%) |
|---------|----------|-----------------|----------|-----------------|--------------|----|----|---------|
|         | 領先指標綜合指數 | 領先指標循環波動 (不含趨勢) | 同時指標綜合指數 | 同時指標循環波動 (不含趨勢) |              |    |    |         |
| 2000平均  | 62.06    | 105.03          | 63.33    | 107.15          | 綠            | G  | 26 | 2.99    |
| 2001平均  | 54.95    | 91.76           | 57.29    | 95.68           | 藍            | B  | 10 | 4.57    |
| 2002平均  | 61.87    | 100.12          | 60.88    | 98.49           | 綠            | G  | 23 | 5.17    |
| 2003平均  | 65.29    | 99.16           | 64.97    | 98.70           | 綠            | G  | 23 | 4.99    |
| 2004平均  | 72.80    | 102.77          | 72.36    | 102.13          | 黃紅           | YR | 33 | 4.44    |
| 2005平均  | 74.91    | 99.02           | 75.56    | 99.89           | 黃藍           | YB | 22 | 4.13    |
| 2006平均  | 80.10    | 100.76          | 80.02    | 100.66          | 黃藍           | YB | 22 | 3.91    |
| 2007平均  | 84.27    | 102.95          | 85.38    | 104.30          | 綠            | G  | 25 | 3.91    |
| 2008平均  | 78.80    | 95.57           | 84.36    | 102.31          | 黃藍           | YB | 19 | 4.14    |
| 2009平均  | 81.13    | 95.86           | 75.51    | 89.22           | 黃藍           | YB | 19 | 5.85    |
| 2010平均  | 94.94    | 104.79          | 94.47    | 104.20          | 黃紅           | YR | 37 | 5.21    |
| 2011平均  | 97.01    | 100.25          | 100.21   | 103.56          | 綠            | G  | 24 | 4.39    |
| 2012平均  | 98.16    | 97.53           | 100.02   | 99.38           | 黃藍           | YB | 17 | 4.24    |
| 2013平均  | 102.94   | 99.83           | 102.12   | 99.04           | 黃藍           | YB | 20 | 4.18    |
| 2014平均  | 106.19   | 101.18          | 107.03   | 101.98          | 綠            | G  | 25 | 3.96    |
| 2015平均  | 105.24   | 99.53           | 105.28   | 99.56           | 黃藍           | YB | 17 | 3.78    |
| 2015 9  | 104.72   | 98.97           | 104.02   | 98.31           | 藍            | B  | 14 | 3.89    |
| 2015 10 | 104.58   | 98.82           | 103.89   | 98.16           | 藍            | B  | 15 | 3.90    |
| 2015 11 | 104.37   | 98.61           | 103.69   | 97.96           | 藍            | B  | 15 | 3.91    |
| 2015 12 | 104.13   | 98.36           | 103.44   | 97.71           | 藍            | B  | 14 | 3.87    |
| 2016 1  | 103.92   | 98.14           | 103.21   | 97.47           | 藍            | B  | 14 | 3.87    |
| 2016 2  | 103.82   | 98.03           | 103.15   | 97.40           | 藍            | B  | 16 | 3.95    |
| 2016 3  | 103.96   | 98.14           | 103.40   | 97.61           | 藍            | B  | 16 | 3.89    |
| 2016 4  | 104.24   | 98.38           | 103.99   | 98.14           | 黃藍           | YB | 17 | 3.86    |
| 2016 5  | 104.72   | 98.81           | 104.82   | 98.91           | 黃藍           | YB | 20 | 3.84    |
| 2016 6  | 105.30   | 99.33           | 105.83   | 99.83           | 黃藍           | YB | 20 | 3.92    |
| 2016 7  | 105.90   | 99.87           | 106.94   | 100.85          | 綠            | G  | 23 | 4.02    |
| 2016 8  | 106.39   | 100.30          | 108.06   | 101.88          | 綠            | G  | 25 | 4.08    |
| 2016 9  | 106.74   | 100.61          | 109.20   | 102.92          | 綠            | G  | 23 | 3.99    |
| 2016 10 | 107.00   | 100.82          | 110.42   | 104.05          | 綠            | G  | 24 | 3.95    |

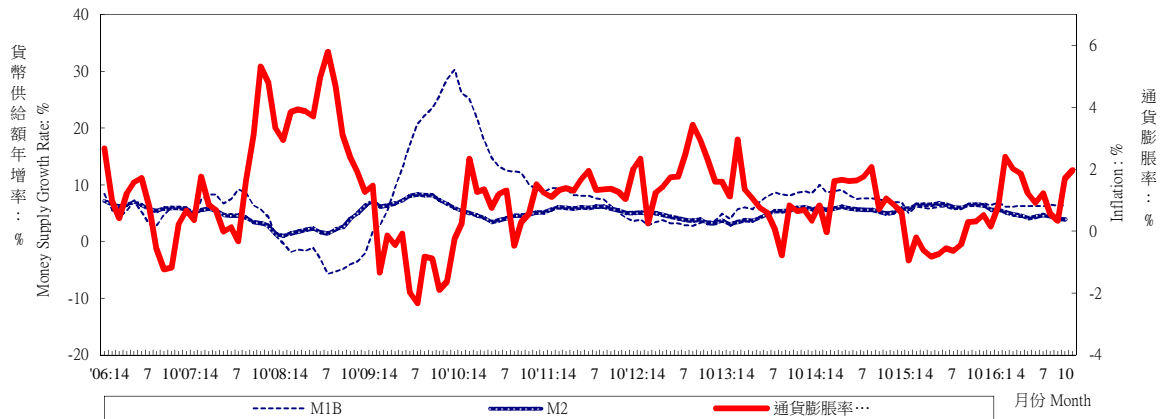
資料來源：國家發展委員會，「105年10月份景氣概況」；主計總處。

Source : National Development Council, "Taiwan Business Indicators in Dec. 2016"; DGBAS.

表五：物價與金融概況

Table 5. Prices and Financial Situation

貨幣供給額與通貨膨脹率  
Money Supply Growth Rate and Inflation



| 年與月<br>Year & Month | 躉售物價<br>(基期100年=100)<br>Wholesale Prices<br>(2011=100) |  | 消費者物價<br>(基期100年=100)<br>Consumer Prices<br>(2011=100) |  | 貨幣供給額年增率<br>Money Supply<br>(Annual Growth Rate) |                 |                |
|---------------------|--|--|--|--|--|-----------------|----------------|
|                     | 指數<br>Index<br>(%)                                     | 年增率<br>Annual Rate<br>of Change<br>(%) | 指數<br>Index<br>(%)                                     | 年增率<br>Annual Rate<br>of Change<br>(%) | M1A(日平均)<br>(%)                                  | M1B(日平均)<br>(%) | M2(日平均)<br>(%) |
| 2000                | 77.32  | 1.82                                   | 89.82  | 1.25                                   | 7.36   | 10.58           | 7.04           |
| 2001                | 76.28  | -1.35                                  | 89.82  | 0.00                                   | -4.69  | -1.02           | 5.72           |
| 2002                | 76.32  | 0.05                                   | 89.64  | -0.20                                  | 8.59   | 17.01           | 3.46           |
| 2003                | 78.21  | 2.48                                   | 89.39  | -0.28                                  | 11.28  | 11.82           | 3.68           |
| 2004                | 83.71  | 7.03                                   | 90.83  | 1.61                                   | 21.10  | 18.98           | 7.27           |
| 2005                | 84.22  | 0.61                                   | 92.92  | 2.30                                   | 7.65   | 7.10            | 6.20           |
| 2006                | 88.96  | 5.63                                   | 93.48  | 0.60                                   | 5.72   | 5.30            | 6.18           |
| 2007                | 94.72  | 6.47                                   | 95.16  | 1.80                                   | 6.80   | 6.44            | 4.16           |
| 2008                | 99.59  | 5.14                                   | 98.51  | 3.52                                   | 0.97   | -2.94           | 2.71           |
| 2009                | 90.90  | -8.73                                  | 97.66  | -0.86                                  | 13.37  | 16.54           | 7.45           |
| 2010                | 95.86  | 5.46                                   | 98.60  | 0.96                                   | 14.51  | 14.93           | 4.53           |
| 2011                | 100.00   | 4.32                                   | 100.00   | 1.42                                   | 8.08   | 7.16            | 5.83           |
| 2012                | 98.84  | -1.16                                  | 101.93   | 1.93                                   | 3.55   | 3.45            | 4.17           |
| 2013                | 96.44  | -2.43                                  | 102.74   | 0.79                                   | 9.15   | 7.27            | 4.78           |
| 2014                | 95.95  | -0.51                                  | 103.97   | 1.20                                   | 9.25   | 7.96            | 5.66           |
| 2015                | 87.43  | -8.87                                  | 103.65   | -0.31                                  | 6.53   | 6.10            | 6.34           |
| 2015 10             | 86.29  | -8.67                                  | 105.20   | 0.31                                   | 6.54   | 6.75            | 6.58           |
| 11                  | 85.53  | -7.97                                  | 104.47   | 0.53                                   | 6.95   | 6.73            | 6.39           |
| 12                  | 84.99  | -7.30                                  | 103.70   | 0.14                                   | 7.59   | 6.37            | 5.68           |
| 2016 1              | 84.81  | -5.14                                  | 103.12   | 0.81                                   | 8.91   | 6.92            | 5.63           |
| 2                   | 84.55  | -4.90                                  | 105.12   | 2.41                                   | 6.84   | 6.11            | 5.17           |
| 3                   | 84.44  | -4.92                                  | 104.47   | 2.01                                   | 7.58   | 6.16            | 4.81           |
| 4                   | 84.26  | -4.21                                  | 104.81   | 1.87                                   | 7.75   | 6.30            | 4.65           |
| 5                   | 85.07  | -2.80                                  | 104.41   | 1.23                                   | 8.93   | 6.30            | 4.14           |
| 6                   | 85.33  | -2.80                                  | 104.78   | 0.91                                   | 7.77   | 6.23            | 4.42           |
| 7                   | 84.81  | -2.48                                  | 105.02   | 1.23                                   | 7.05   | 6.24            | 4.70           |
| 8                   | 83.89  | -3.97                                  | 104.98   | 0.57                                   | 6.21   | 6.48            | 4.51           |
| 9                   | 84.04  | -3.77                                  | 105.46   | 0.33                                   | 6.24   | 6.36            | 4.05           |
| 10                  | 84.76  | -1.77                                  | 106.99   | 1.70                                   | 6.46   | 6.35            | 3.98           |
| 11                  | 85.29  | -0.28                                  | 106.53   | 1.97                                   | --   | --              | --             |
| 1-當月                | 84.66  | -3.39                                  | 105.06   | 1.36                                   | 7.37   | 6.35            | 4.61           |

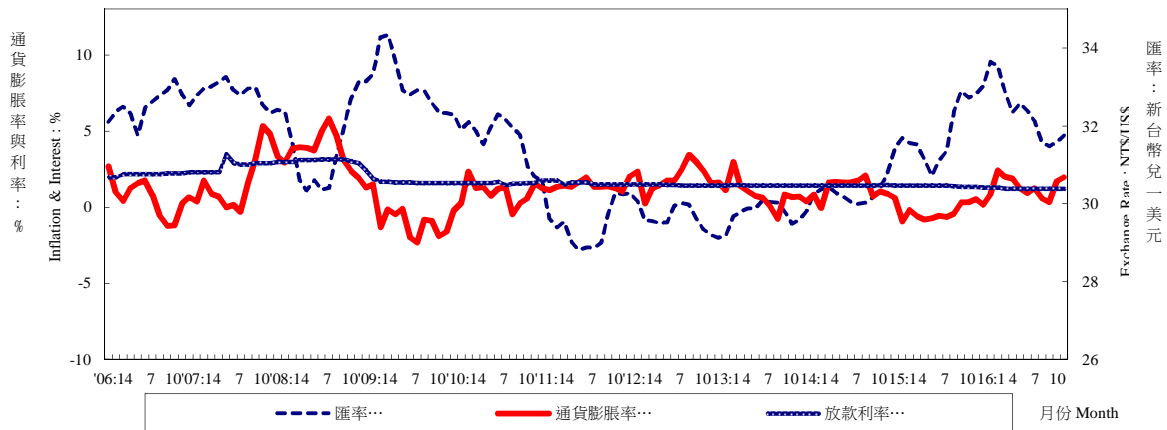
資料來源：主計總處，「105年11月份物價變動概況」；中央銀行，「金融統計月報」。

Source : Directorate General of Budget, Accounting and Statistics, Executive Yuan, R.O.C., "The Price Indices for Nov. 2016";  
Central Bank of Republic of China (Taiwan), "Financial Statistics Monthly, Republic of China (Taiwan)".

表五：物價與金融概況

Table 5. Prices and Financial Situation

利率、通貨膨脹率與匯率  
Interest Rate, Exchange Rate and Inflation



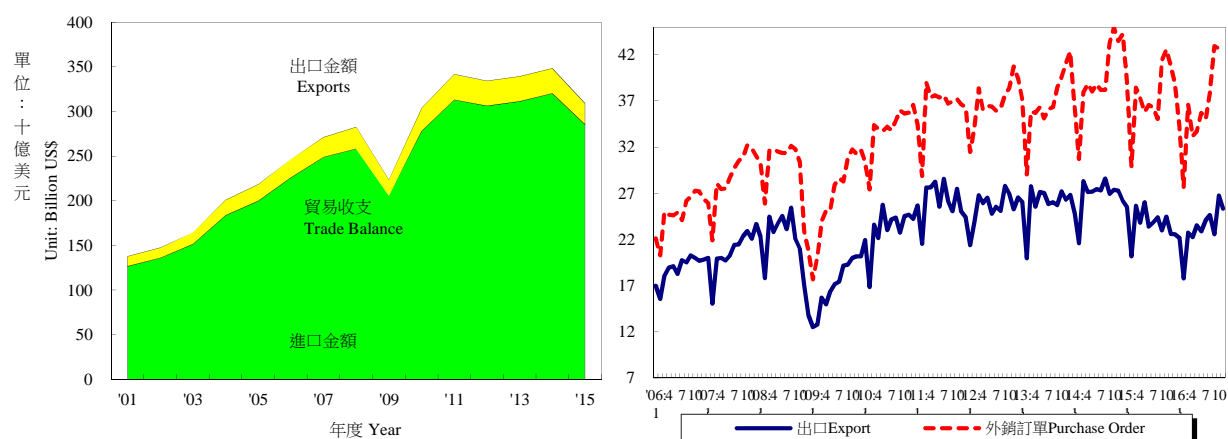
| 年與月<br>Year & Month | 一個月期存款牌告利率<br>1-Month Deposits Rates (%) | 基本放款利率<br>(1 Year, Max)<br>Short Term Loans Interest Rate (%) | 商業本票<br>初級市場<br>180天利率<br>Commercial Paper<br>Primary Mkt.(180d)<br>Interest Rate (%) | 股價指數(平均)<br>Stock Indexes |                                  | 匯率(平均)<br>Exchange Rate          |                                 |
|---------------------|--|---|---|---------------------------|----------------------------------|----------------------------------|---------------------------------|
|                     |  |   |   | 指數<br>Index (%)           | 年增率<br>Annual Rate of Change (%) | 新臺幣<br>兌一美元<br>NT\$ Against US\$ | 新臺幣<br>兌一日元<br>NT\$ Against Yen |
| 2000                | 4.62                                     | 7.86  | 5.62  | 7,847                     | 5.66                             | 31.23                            | 0.2898                          |
| 2001                | 4.09                                     | 7.78  | 4.17  | 4,907                     | -37.46                           | 33.80                            | 0.2781                          |
| 2002                | 1.83                                     | 7.46  | 2.75  | 5,226                     | 6.50                             | 34.58                            | 0.2757                          |
| 2003                | 1.11                                     | 7.10  | 1.80  | 5,162                     | 0.54                             | 34.42                            | 0.2969                          |
| 2004                | 1.08                                     | 7.07  | 1.61  | 6,034                     | 30.57                            | 33.42                            | 0.3089                          |
| 2005                | 1.34                                     | 7.32  | 2.00  | 6,092                     | 0.96                             | 32.17                            | 0.2918                          |
| 2006                | 1.61                                     | 7.53  | 2.19  | 6,842                     | 12.31                            | 32.53                            | 0.2797                          |
| 2007                | 1.90                                     | 7.93  | 2.74  | 8,510                     | 24.38                            | 32.84                            | 0.2789                          |
| 2008                | 1.98                                     | 8.15  | 3.03  | 7,024                     | -17.46                           | 31.52                            | 0.3049                          |
| 2009                | 0.39                                     | 6.51  | 1.65  | 6,460                     | -8.03                            | 33.05                            | 0.3532                          |
| 2010                | 0.56                                     | 6.21  | 1.60  | 7,950                     | 23.07                            | 31.64                            | 0.3605                          |
| 2011                | 0.83                                     | 6.36  | 1.59  | 8,156                     | 2.59                             | 29.46                            | 0.3692                          |
| 2012                | 0.88                                     | 6.49  | 1.47  | 7,481                     | -8.28                            | 29.61                            | 0.3711                          |
| 2013                | 0.88                                     | 6.45  | 1.45  | 8,093                     | 8.18                             | 29.77                            | 0.3050                          |
| 2014                | 0.88                                     | 6.45  | 1.45  | 8,992                     | 11.11                            | 30.37                            | 0.2866                          |
| 2015                | 0.85                                     | 6.45  | 1.40  | 8,959                     | -0.36                            | 31.90                            | 0.2636                          |
| 10                  | 0.81                                     | 6.42  | 1.34  | 8,551                     | -3.04                            | 32.73                            | 0.2726                          |
| 11                  | 0.81                                     | 6.42  | 1.33  | 8,503                     | -5.69                            | 32.80                            | 0.2677                          |
| 12                  | 0.74                                     | 6.42  | 1.29  | 8,298                     | -8.90                            | 33.01                            | 0.2707                          |
| 2016                |  |   |   |                           |                                  |                                  |                                 |
| 1                   | 0.74                                     | 6.35  | 1.29  | 7,871                     | -15.20                           | 33.64                            | 0.2844                          |
| 2                   | 0.74                                     | 6.35  | 1.29  | 8,247                     | -13.25                           | 33.55                            | 0.2915                          |
| 3                   | 0.67                                     | 6.35  | 1.26  | 8,688                     | -9.61                            | 32.85                            | 0.2906                          |
| 4                   | 0.67                                     | 6.35  | 1.26  | 8,568                     | -11.49                           | 32.35                            | 0.2942                          |
| 5                   | 0.67                                     | 6.35  | 1.25  | 8,235                     | -15.00                           | 32.57                            | 0.2987                          |
| 6                   | 0.67                                     | 6.35  | 1.25  | 8,595                     | -8.12                            | 32.40                            | 0.3071                          |
| 7                   | 0.60                                     | 6.26  | 1.23  | 8,900                     | -0.72                            | 32.12                            | 0.3090                          |
| 8                   | 0.60                                     | 6.26  | 1.22  | 9,094                     | 11.50                            | 31.58                            | 0.3118                          |
| 9                   | 0.60                                     | 6.26  | 1.22  | 9,131                     | 11.27                            | 31.48                            | 0.3088                          |
| 10                  | 0.60                                     | 6.24  | 1.22  | 9,274                     | 8.45                             | 31.57                            | 0.3041                          |
| 11                  | --                                       | 6.24  | 1.25  | 9,098                     | -1.89                            | 31.76                            | 0.2937                          |
| 1-當月                | 0.66                                     | 6.31  | 1.25  | 8,700                     | -3.82                            | 32.35                            | 0.2994                          |

資料來源：中央銀行，「金融統計月報」；經濟日報；第一銀行；台灣證券交易所。

Source : Central Bank of Republic of China (Taiwan), "Financial Statistics Monthly, Republic of China (Taiwan)"; Economic Daily News; First Bank; Taiwan Stock Exchange Corporation.

# 表六：臺灣進出口貿易

## Table 6. Foreign Trade Values



| 年<br>與<br>月<br>Year<br>&<br>Month | 海關進出口貿易額<br>Export & Import Values of Foreign Trade |  |   |  | 外銷訂單<br>Purchase Order for Exports |                                       |  |
|-----------------------------------|---|--|---|--|------------------------------------|---------------------------------------|--|
|                                   | 出口金額<br>(百萬美元)<br>Amount<br>(Mil. US\$)             | 年增率<br>Annual Rate<br>of Change<br>(%) | 進口金額<br>(百萬美元)<br>Amount<br>(Mil. US\$) | 年增率<br>Annual Rate<br>of Change<br>(%) | 貿易收支<br>(百萬美元)<br>Trade Balance    | 金額<br>(百萬美元)<br>Amount<br>(Mil. US\$) | 年增率<br>Annual Rate<br>of Change<br>(%) |
| 2001                              | 126,612   | -                                      | 109,588                                 | -                                      | 17,024                             | 135,714                               | -11.54                                 |
| 2002                              | 135,774   | 7.24                                   | 115,116                                 | 5.04                                   | 20,658                             | 150,952                               | 11.23                                  |
| 2003                              | 151,345   | 11.47                                  | 130,249                                 | 13.15                                  | 21,096                             | 170,028                               | 12.64                                  |
| 2004                              | 183,643   | 21.34                                  | 171,554                                 | 31.71                                  | 12,089                             | 215,087                               | 26.50                                  |
| 2005                              | 199,761   | 8.78                                   | 185,438                                 | 8.09                                   | 14,323                             | 256,393                               | 19.20                                  |
| 2006                              | 225,904   | 13.09                                  | 206,442                                 | 11.33                                  | 19,462                             | 299,313                               | 16.74                                  |
| 2007                              | 248,792   | 10.13                                  | 223,115                                 | 8.08                                   | 25,677                             | 345,814                               | 15.54                                  |
| 2008                              | 258,051   | 3.72                                   | 244,467                                 | 9.57                                   | 13,584                             | 351,723                               | 1.71                                   |
| 2009                              | 205,663   | -20.30                                 | 177,598                                 | -27.35                                 | 28,065                             | 322,440                               | -8.33                                  |
| 2010                              | 278,008   | 35.18                                  | 256,274                                 | 44.30                                  | 21,734                             | 406,720                               | 26.14                                  |
| 2011                              | 312,923   | 12.56                                  | 288,062                                 | 12.40                                  | 24,861                             | 436,125                               | 7.23                                   |
| 2012                              | 306,409   | -2.08                                  | 277,324                                 | -3.73                                  | 29,085                             | 441,007                               | 1.12                                   |
| 2013                              | 311,428   | 1.64                                   | 278,010                                 | 0.25                                   | 33,418                             | 442,929                               | 0.44                                   |
| 2014                              | 320,092   | 2.78                                   | 281,850                                 | 1.38                                   | 38,242                             | 472,814                               | 6.75                                   |
| 2015                              | 285,344   | -10.86                                 | 237,219                                 | -15.84                                 | 48,125                             | 451,814                               | -4.44                                  |
| 2015 1                            | 25,491  | 2.87                                   | 21,108                                  | -3.39                                  | 4,383                              | 39,038                                | 8.11                                   |
| 2                                 | 20,171  | -6.61                                  | 15,684                                  | -22.68                                 | 4,487                              | 29,890                                | -2.66                                  |
| 3                                 | 25,643  | -9.40                                  | 21,938                                  | -17.58                                 | 3,705                              | 38,427                                | 1.28                                   |
| 4                                 | 23,802  | -12.34                                 | 19,296                                  | -22.13                                 | 4,506                              | 37,318                                | -3.99                                  |
| 5                                 | 26,024  | -4.25                                  | 20,733                                  | -5.78                                  | 5,291                              | 35,793                                | -5.85                                  |
| 6                                 | 23,385  | -14.82                                 | 21,452                                  | -16.24                                 | 1,933                              | 36,582                                | -5.76                                  |
| 7                                 | 23,833  | -12.69                                 | 20,544                                  | -17.69                                 | 3,289                              | 36,287                                | -4.96                                  |
| 8                                 | 24,412  | -14.60                                 | 20,836                                  | -15.13                                 | 3,576                              | 35,026                                | -8.33                                  |
| 9                                 | 22,979  | -14.67                                 | 18,054                                  | -22.91                                 | 4,925                              | 41,345                                | -4.54                                  |
| 10                                | 24,450  | -10.67                                 | 18,715                                  | -18.79                                 | 5,736                              | 42,548                                | -5.26                                  |
| 11                                | 22,605  | -17.16                                 | 20,458                                  | -11.45                                 | 2,147                              | 40,755                                | -6.33                                  |
| 12                                | 22,549  | -13.79                                 | 18,402                                  | -14.93                                 | 4,147                              | 38,805                                | -12.26                                 |
| 2016 1                            | 22,192  | -12.94                                 | 18,676                                  | -11.52                                 | 3,515                              | 34,186                                | -12.43                                 |
| 2                                 | 17,755  | -11.98                                 | 13,617                                  | -13.18                                 | 4,138                              | 27,669                                | -7.43                                  |
| 3                                 | 22,721  | -11.40                                 | 18,220                                  | -16.95                                 | 4,501                              | 36,625                                | -4.69                                  |
| 4                                 | 22,244  | -6.54                                  | 17,445                                  | -9.59                                  | 4,799                              | 33,159                                | -11.15                                 |
| 5                                 | 23,539  | -9.55                                  | 20,035                                  | -3.37                                  | 3,504                              | 33,729                                | -5.77                                  |
| 6                                 | 22,868  | -2.21                                  | 19,301                                  | -10.03                                 | 3,567                              | 35,704                                | -2.40                                  |
| 7                                 | 24,096  | 1.10                                   | 20,516                                  | -0.14                                  | 3,580                              | 35,035                                | -3.45                                  |
| 8                                 | 24,653  | 0.99                                   | 20,674                                  | -0.78                                  | 3,980                              | 37,927                                | 8.28                                   |
| 9                                 | 22,555  | -1.84                                  | 18,185                                  | 0.72                                   | 4,370                              | 42,962                                | 3.91                                   |
| 10                                | 26,744  | 9.40                                   | 22,364                                  | 19.55                                  | 4,380                              | 42,683                                | 0.32                                   |
| 11                                | 25,335  | 12.08                                  | 21,071                                  | 3.00                                   | 4,265                              | --                                    | --                                     |
| 1-當月                              | 254,707   | -3.08                                  | 210,112                                 | -3.98                                  | 44,595                             | 359,679                               | -3.38                                  |

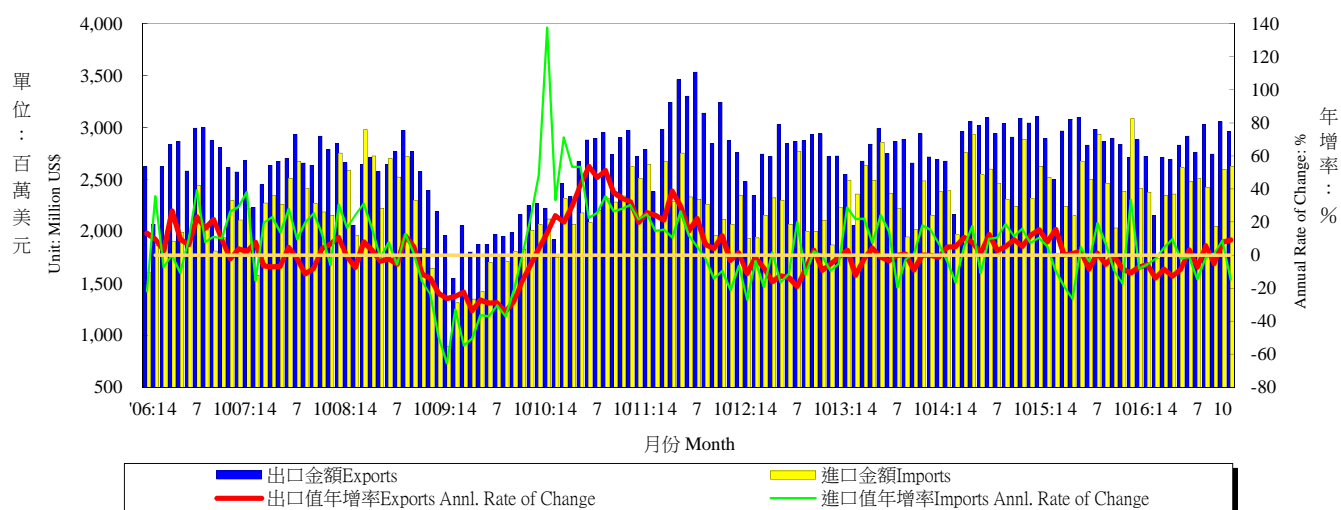
資料來源：財政部統計處，「105年11月海關進出口貿易統計速報」；經濟部統計處，「105年10月外銷訂單統計」。

Source : Department of Statistics, Ministry of Finance, "Summary of Exports and Imports for Nov., 2016";

Department of Statistics, MOEA, "Export Order in Oct. 2016".

# 表七：臺灣對美國之進出口狀況

## Table 7. Trade with the United States



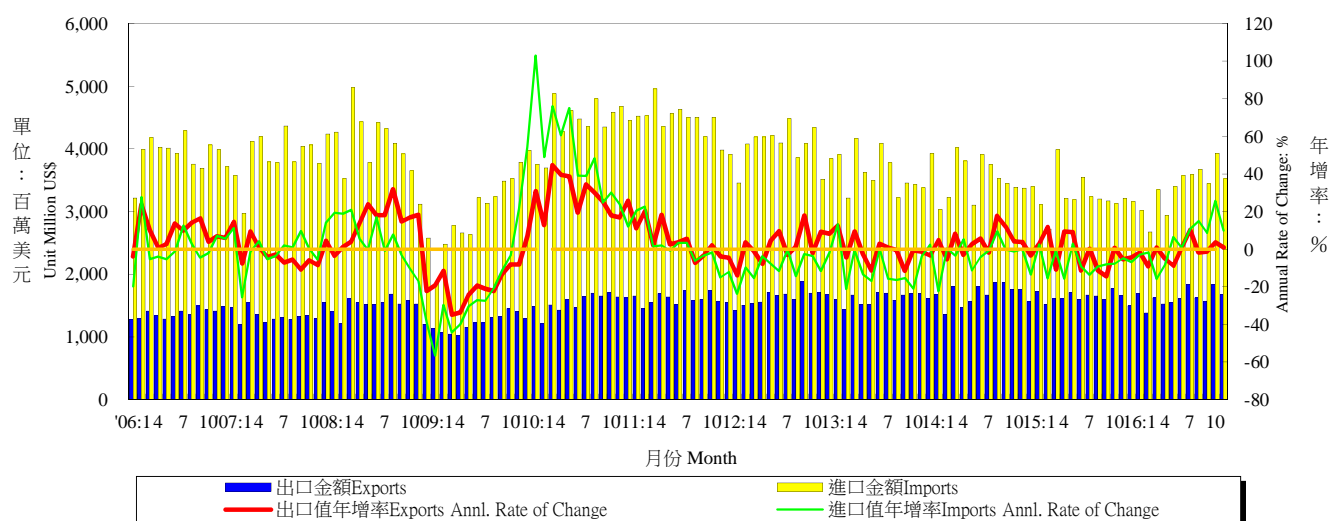
| 年與月<br>Year & Month | 出口值<br>Exports                        |  |                           | 進口值<br>Imports                        |  |                           | 出入超<br>Trade Balance                  | 貿易總額<br>Total Trade Amount            |  |
|---------------------|---------------------------------------|--|---------------------------|---------------------------------------|--|---------------------------|---------------------------------------|---------------------------------------|--|
|                     | 金額<br>(百萬美元)<br>Amount<br>(Mil. US\$) | 年增率<br>Annual rate of<br>change<br>(%) | 份額<br>Export share<br>(%) | 金額<br>(百萬美元)<br>Amount<br>(Mil. US\$) | 年增率<br>Annual rate of<br>change<br>(%) | 份額<br>Export share<br>(%) | 金額<br>(百萬美元)<br>Amount<br>(Mil. US\$) | 金額<br>(百萬美元)<br>Amount<br>(Mil. US\$) | 年增率<br>Annual rate of<br>change<br>(%) |
| 2001                | 28,128                                | --                                     | 22.22                     | 19,091                                | --                                     | 17.42                     | 9,037                                 | 47,219                                | --                                     |
| 2002                | 27,375                                | -2.68                                  | 20.16                     | 19,024                                | -0.35                                  | 16.53                     | 8,351                                 | 46,398                                | -1.74                                  |
| 2003                | 26,577                                | -2.91                                  | 17.56                     | 17,795                                | -6.46                                  | 13.66                     | 8,783                                 | 44,372                                | -4.37                                  |
| 2004                | 28,815                                | 8.42                                   | 15.69                     | 22,619                                | 27.11                                  | 13.18                     | 6,196                                 | 51,435                                | 15.92                                  |
| 2005                | 29,165                                | 1.21                                   | 14.60                     | 21,886                                | -3.24                                  | 11.80                     | 7,279                                 | 51,052                                | -0.74                                  |
| 2006                | 32,475                                | 11.35                                  | 14.38                     | 23,839                                | 8.92                                   | 11.55                     | 8,635                                 | 56,314                                | 10.31                                  |
| 2007                | 32,165                                | -0.95                                  | 12.93                     | 27,642                                | 15.95                                  | 12.39                     | 4,523                                 | 59,807                                | 6.20                                   |
| 2008                | 30,981                                | -3.68                                  | 12.01                     | 27,593                                | -0.18                                  | 11.29                     | 3,388                                 | 58,574                                | -2.06                                  |
| 2009                | 23,707                                | -23.48                                 | 11.53                     | 19,201                                | -30.41                                 | 10.81                     | 4,506                                 | 42,908                                | -26.75                                 |
| 2010                | 31,675                                | 33.61                                  | 11.39                     | 26,799                                | 39.57                                  | 10.46                     | 4,876                                 | 58,474                                | 36.28                                  |
| 2011                | 36,558                                | 15.42                                  | 11.68                     | 27,767                                | 3.61                                   | 9.64                      | 8,791                                 | 64,326                                | 10.01                                  |
| 2012                | 33,224                                | -9.12                                  | 10.84                     | 25,701                                | -7.44                                  | 9.27                      | 7,523                                 | 58,925                                | -8.40                                  |
| 2013                | 32,630                                | -1.79                                  | 10.48                     | 28,410                                | 10.54                                  | 10.22                     | 4,220                                 | 61,040                                | 3.59                                   |
| 2014                | 35,114                                | 7.61                                   | 10.97                     | 30,036                                | 5.72                                   | 10.66                     | 5,078                                 | 65,150                                | 6.73                                   |
| 2015                | 34,543                                | -1.63                                  | 12.11                     | 29,196                                | -2.80                                  | 12.31                     | 5,347                                 | 63,739                                | -2.17                                  |
| 2015                |                                       |  |                           |                                       |  |                           |                                       |                                       |  |
| 11                  | 2,716                                 | -10.78                                 | 12.00                     | 3,085                                 | 33.38                                  | 15.10                     | -370                                  | 5,801                                 | 8.29                                   |
| 12                  | 2,883                                 | -7.25                                  | 12.80                     | 2,412                                 | -8.21                                  | 13.10                     | 471                                   | 5,295                                 | -7.69                                  |
| 2016                |                                       |  |                           |                                       |  |                           |                                       |                                       |  |
| 1                   | 2,724                                 | -5.83                                  | 12.30                     | 2,379                                 | -5.61                                  | 12.70                     | 344                                   | 5,103                                 | -5.73                                  |
| 2                   | 2,154                                 | -13.85                                 | 12.10                     | 1,745                                 | -2.19                                  | 12.80                     | 409                                   | 3,899                                 | -8.99                                  |
| 3                   | 2,713                                 | -8.55                                  | 11.90                     | 2,348                                 | 4.61                                   | 12.90                     | 366                                   | 5,061                                 | -2.88                                  |
| 4                   | 2,690                                 | -12.70                                 | 12.10                     | 2,360                                 | 9.68                                   | 13.50                     | 329                                   | 5,050                                 | -3.50                                  |
| 5                   | 2,831                                 | -8.54                                  | 12.00                     | 2,614                                 | -2.25                                  | 13.00                     | 217                                   | 5,446                                 | -5.62                                  |
| 6                   | 2,917                                 | 3.08                                   | 12.80                     | 2,479                                 | -0.94                                  | 12.80                     | 438                                   | 5,396                                 | 1.20                                   |
| 7                   | 2,761                                 | -7.31                                  | 11.50                     | 2,509                                 | -14.59                                 | 12.20                     | 253                                   | 5,270                                 | -10.93                                 |
| 8                   | 3,031                                 | 5.71                                   | 12.30                     | 2,425                                 | -1.62                                  | 11.70                     | 605                                   | 5,456                                 | 2.32                                   |
| 9                   | 2,745                                 | -5.23                                  | 12.20                     | 2,050                                 | 0.89                                   | 11.30                     | 695                                   | 4,796                                 | -2.68                                  |
| 10                  | 3,055                                 | 7.79                                   | 11.40                     | 2,597                                 | 8.79                                   | 11.60                     | 459                                   | 5,652                                 | 8.25                                   |
| 11                  | 2,962                                 | 9.07                                   | 11.70                     | 2,627                                 | -14.85                                 | 12.50                     | 335                                   | 5,589                                 | -3.65                                  |
| 1-當月                | 30,584                                | -3.40                                  | 12.00                     | 26,134                                | -2.43                                  | 12.40                     | 4,451                                 | 56,718                                | -2.95                                  |

資料來源：財政部統計處，「105年11月海關進出口貿易統計速報」。

Source : Department of Statistics, Ministry of Finance, "Summary of Exports and Imports for Nov., 2016".

# 表八：臺灣對日本之進出口狀況

## Table 8. Trade with Japan



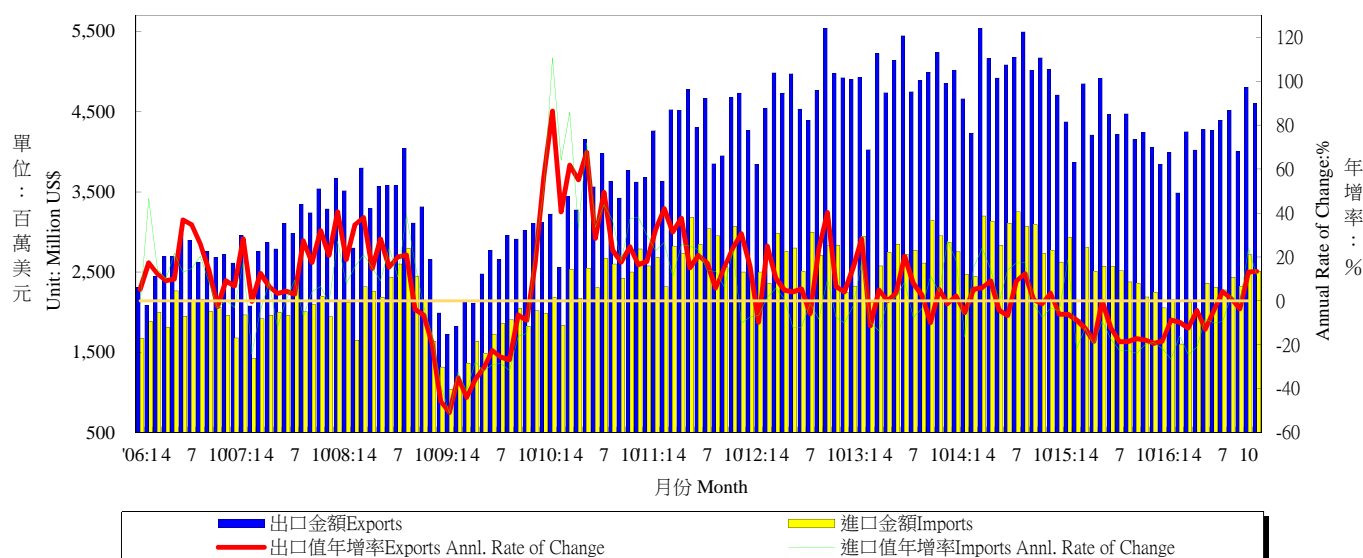
| 年與月<br>Year & Month | 出口值<br>Exports                        |                                     |                           | 進口值<br>Imports                        |                                     |                           | 出入超<br>Trade Balance                  | 貿易總額<br>Total Trade Amount            |                                     |
|---------------------|---------------------------------------|-------------------------------------|---------------------------|---------------------------------------|-------------------------------------|---------------------------|---------------------------------------|---------------------------------------|-------------------------------------|
|                     | 金額<br>(百萬美元)<br>Amount<br>(Mil. US\$) | 年增率<br>Annual rate of change<br>(%) | 份額<br>Export share<br>(%) | 金額<br>(百萬美元)<br>Amount<br>(Mil. US\$) | 年增率<br>Annual rate of change<br>(%) | 份額<br>Export share<br>(%) | 金額<br>(百萬美元)<br>Amount<br>(Mil. US\$) | 金額<br>(百萬美元)<br>Amount<br>(Mil. US\$) | 年增率<br>Annual rate of change<br>(%) |
| 2001                | 13,033                                | --                                  | 10.29                     | 26,105                                | --                                  | 23.82                     | -13,072                               | 39,138                                | --                                  |
| 2002                | 12,395                                | -4.89                               | 9.13                      | 27,610                                | 5.76                                | 23.98                     | -15,215                               | 40,005                                | 2.22                                |
| 2003                | 12,479                                | 0.68                                | 8.25                      | 33,102                                | 19.89                               | 25.41                     | -20,623                               | 45,581                                | 13.94                               |
| 2004                | 13,953                                | 11.81                               | 7.60                      | 44,324                                | 33.90                               | 25.84                     | -30,370                               | 58,277                                | 27.85                               |
| 2005                | 15,249                                | 9.28                                | 7.63                      | 46,685                                | 5.33                                | 25.18                     | -31,436                               | 61,934                                | 6.27                                |
| 2006                | 16,509                                | 8.26                                | 7.31                      | 46,849                                | 0.35                                | 22.69                     | -30,340                               | 63,357                                | 2.30                                |
| 2007                | 16,167                                | -2.07                               | 6.50                      | 46,710                                | -0.30                               | 20.94                     | -30,543                               | 62,878                                | -0.76                               |
| 2008                | 17,857                                | 10.45                               | 6.92                      | 47,088                                | 0.81                                | 19.26                     | -29,231                               | 64,944                                | 3.29                                |
| 2009                | 14,632                                | -18.06                              | 7.11                      | 36,751                                | -21.95                              | 20.69                     | -22,120                               | 51,383                                | -20.88                              |
| 2010                | 18,645                                | 27.43                               | 6.71                      | 52,910                                | 43.97                               | 20.65                     | -34,266                               | 71,555                                | 39.26                               |
| 2011                | 19,242                                | 3.20                                | 6.15                      | 53,149                                | 0.45                                | 18.45                     | -33,906                               | 72,391                                | 1.17                                |
| 2012                | 19,624                                | 1.98                                | 6.40                      | 48,342                                | -9.04                               | 17.43                     | -28,718                               | 67,966                                | -6.11                               |
| 2013                | 19,391                                | -1.19                               | 6.23                      | 43,690                                | -9.62                               | 15.72                     | -24,299                               | 63,081                                | -7.19                               |
| 2014                | 20,142                                | 3.87                                | 6.29                      | 41,984                                | -3.90                               | 14.90                     | -21,842                               | 62,127                                | -1.51                               |
| 2015                | 19,592                                | -2.73                               | 6.87                      | 38,865                                | -7.43                               | 16.38                     | -19,273                               | 58,457                                | -5.91                               |
| 2015 11             | 1,658                                 | -5.49                               | 7.30                      | 3,209                                 | -4.93                               | 15.70                     | -1,551                                | 4,867                                 | -5.12                               |
| 2015 12             | 1,492                                 | -4.46                               | 6.60                      | 3,161                                 | -6.95                               | 17.20                     | -1,669                                | 4,652                                 | -6.16                               |
| 2016 1              | 1,689                                 | -1.94                               | 7.60                      | 3,017                                 | -2.92                               | 16.20                     | -1,327                                | 4,706                                 | -2.57                               |
| 2016 2              | 1,379                                 | -9.25                               | 7.80                      | 2,672                                 | -1.77                               | 19.60                     | -1,293                                | 4,051                                 | -4.45                               |
| 2016 3              | 1,621                                 | 0.88                                | 7.10                      | 3,348                                 | -16.00                              | 18.40                     | -1,726                                | 4,969                                 | -11.15                              |
| 2016 4              | 1,524                                 | -5.04                               | 6.80                      | 2,942                                 | -8.43                               | 16.90                     | -1,418                                | 4,465                                 | -7.30                               |
| 2016 5              | 1,550                                 | -8.89                               | 6.60                      | 3,397                                 | 6.42                                | 17.00                     | -1,847                                | 4,947                                 | 1.10                                |
| 2016 6              | 1,613                                 | 0.83                                | 7.10                      | 3,572                                 | 0.73                                | 18.50                     | -1,960                                | 5,185                                 | 0.76                                |
| 2016 7              | 1,839                                 | 10.17                               | 7.60                      | 3,587                                 | 10.81                               | 17.50                     | -1,748                                | 5,426                                 | 10.59                               |
| 2016 8              | 1,622                                 | -1.88                               | 6.60                      | 3,674                                 | 14.86                               | 17.80                     | -2,052                                | 5,296                                 | 9.16                                |
| 2016 9              | 1,572                                 | -1.39                               | 7.00                      | 3,443                                 | 8.58                                | 18.90                     | -1,871                                | 5,015                                 | 5.26                                |
| 2016 10             | 1,833                                 | 3.51                                | 6.90                      | 3,930                                 | 25.70                               | 17.60                     | -2,096                                | 5,763                                 | 17.68                               |
| 2016 11             | 1,672                                 | 0.84                                | 6.60                      | 3,522                                 | 9.75                                | 16.70                     | -1,850                                | 5,194                                 | 6.72                                |
| 2016 1-當月           | 17,914                                | -1.03                               | 7.00                      | 37,102                                | 3.92                                | 17.70                     | -19,188                               | 55,017                                | 2.25                                |

資料來源：財政部統計處，「105年11月海關進出口貿易統計速報」。

Source : Department of Statistics, Ministry of Finance, "Summary of Exports and Imports for Nov., 2016".

# 表九：臺灣對東協之進出口狀況

## Table 9. Trade with ASEAN



| 年與月<br>Year & Month | 出口值<br>Exports                        |                                     |                           | 進口值<br>Imports                        |                                     |                           | 出入超<br>Trade Balance                  | 貿易總額<br>Total Trade Amount            |                                     |        |
|---------------------|---------------------------------------|-------------------------------------|---------------------------|---------------------------------------|-------------------------------------|---------------------------|---------------------------------------|---------------------------------------|-------------------------------------|--------|
|                     | 金額<br>(百萬美元)<br>Amount<br>(Mil. US\$) | 年增率<br>Annual rate of change<br>(%) | 份額<br>Export share<br>(%) | 金額<br>(百萬美元)<br>Amount<br>(Mil. US\$) | 年增率<br>Annual rate of change<br>(%) | 份額<br>Export share<br>(%) | 金額<br>(百萬美元)<br>Amount<br>(Mil. US\$) | 金額<br>(百萬美元)<br>Amount<br>(Mil. US\$) | 年增率<br>Annual rate of change<br>(%) |        |
| 2001                | 15,416                                | --                                  | 12.18                     | 16,086                                | --                                  | 14.68                     | -670                                  | 31,503                                | --                                  |        |
| 2002                | 16,533                                | 7.24                                | 12.18                     | 16,706                                | 3.85                                | 14.51                     | -174                                  | 33,239                                | 5.51                                |        |
| 2003                | 18,250                                | 10.39                               | 12.06                     | 17,614                                | 5.43                                | 13.52                     | 636                                   | 35,864                                | 7.90                                |        |
| 2004                | 24,240                                | 32.82                               | 13.20                     | 20,487                                | 16.31                               | 11.94                     | 3,752                                 | 44,727                                | 24.71                               |        |
| 2005                | 27,586                                | 13.81                               | 13.81                     | 21,305                                | 3.99                                | 11.49                     | 6,282                                 | 48,891                                | 9.31                                |        |
| 2006                | 31,494                                | 14.17                               | 13.94                     | 23,599                                | 10.77                               | 11.43                     | 7,896                                 | 55,093                                | 12.69                               |        |
| 2007                | 36,619                                | 16.27                               | 14.72                     | 23,953                                | 1.50                                | 10.74                     | 12,666                                | 60,572                                | 9.95                                |        |
| 2008                | 39,249                                | 7.18                                | 15.21                     | 25,899                                | 8.12                                | 10.59                     | 13,350                                | 65,148                                | 7.55                                |        |
| 2009                | 30,814                                | -21.49                              | 14.98                     | 20,004                                | -22.76                              | 11.26                     | 10,810                                | 50,818                                | -22.00                              |        |
| 2010                | 42,317                                | 37.33                               | 15.22                     | 29,145                                | 45.70                               | 11.37                     | 13,172                                | 71,462                                | 40.62                               |        |
| 2011                | 52,133                                | 23.20                               | 16.66                     | 33,110                                | 13.61                               | 11.49                     | 19,023                                | 85,243                                | 19.29                               |        |
| 2012                | 57,088                                | 9.50                                | 18.63                     | 31,854                                | -3.79                               | 11.49                     | 25,234                                | 88,942                                | 4.34                                |        |
| 2013                | 59,220                                | 3.73                                | 19.02                     | 33,059                                | 3.78                                | 11.89                     | 26,160                                | 92,279                                | 3.75                                |        |
| 2014                | 60,172                                | 1.61                                | 18.80                     | 34,725                                | 5.04                                | 12.32                     | 25,447                                | 94,897                                | 2.84                                |        |
| 2015                | 51,639                                | -14.18                              | 18.10                     | 29,039                                | -16.38                              | 12.24                     | 22,601                                | 80,678                                | -14.98                              |        |
| 2015                | 11                                    | 4,053                               | 17.90                     | -19.35                                | 2,245                               | -18.97                    | 11.00                                 | 1,808                                 | 6,298                               | -19.22 |
|                     | 12                                    | 3,843                               | 17.00                     | -18.33                                | 2,055                               | -21.72                    | 11.20                                 | 1,788                                 | 5,899                               | -19.54 |
| 2016                | 1                                     | 3,992                               | -8.69                     | 18.00                                 | 2,153                               | -26.54                    | 11.50                                 | 1,839                                 | 6,145                               | -15.86 |
|                     | 2                                     | 3,487                               | -9.74                     | 19.60                                 | 1,604                               | -16.09                    | 11.80                                 | 1,883                                 | 5,091                               | -11.84 |
|                     | 3                                     | 4,249                               | -12.34                    | 18.70                                 | 2,117                               | -24.50                    | 11.60                                 | 2,131                                 | 6,366                               | -16.80 |
|                     | 4                                     | 4,022                               | -4.43                     | 18.10                                 | 1,985                               | -20.94                    | 11.40                                 | 2,037                                 | 6,007                               | -10.60 |
|                     | 5                                     | 4,276                               | -12.96                    | 18.20                                 | 2,363                               | -8.09                     | 11.80                                 | 1,913                                 | 6,639                               | -11.29 |
|                     | 6                                     | 4,264                               | -4.43                     | 18.60                                 | 2,308                               | -10.11                    | 12.00                                 | 1,956                                 | 6,572                               | -6.50  |
|                     | 7                                     | 4,393                               | 4.25                      | 18.20                                 | 2,279                               | -9.47                     | 11.10                                 | 2,114                                 | 6,673                               | -0.88  |
|                     | 8                                     | 4,515                               | 0.97                      | 18.30                                 | 2,437                               | 2.51                      | 11.80                                 | 2,079                                 | 6,952                               | 1.50   |
|                     | 9                                     | 4,004                               | -3.56                     | 17.80                                 | 2,325                               | -1.30                     | 12.80                                 | 1,678                                 | 6,329                               | -2.77  |
|                     | 10                                    | 4,800                               | 13.19                     | 17.90                                 | 2,716                               | 23.90                     | 12.10                                 | 2,084                                 | 7,516                               | 16.84  |
|                     | 11                                    | 4,598                               | 13.46                     | 18.20                                 | 2,508                               | 11.73                     | 11.90                                 | 2,091                                 | 7,106                               | 12.84  |
|                     | 1-當月                                  | 46,600                              | -2.50                     | 18.30                                 | 24,795                              | -8.11                     | 11.80                                 | 21,804                                | 71,395                              | -4.53  |

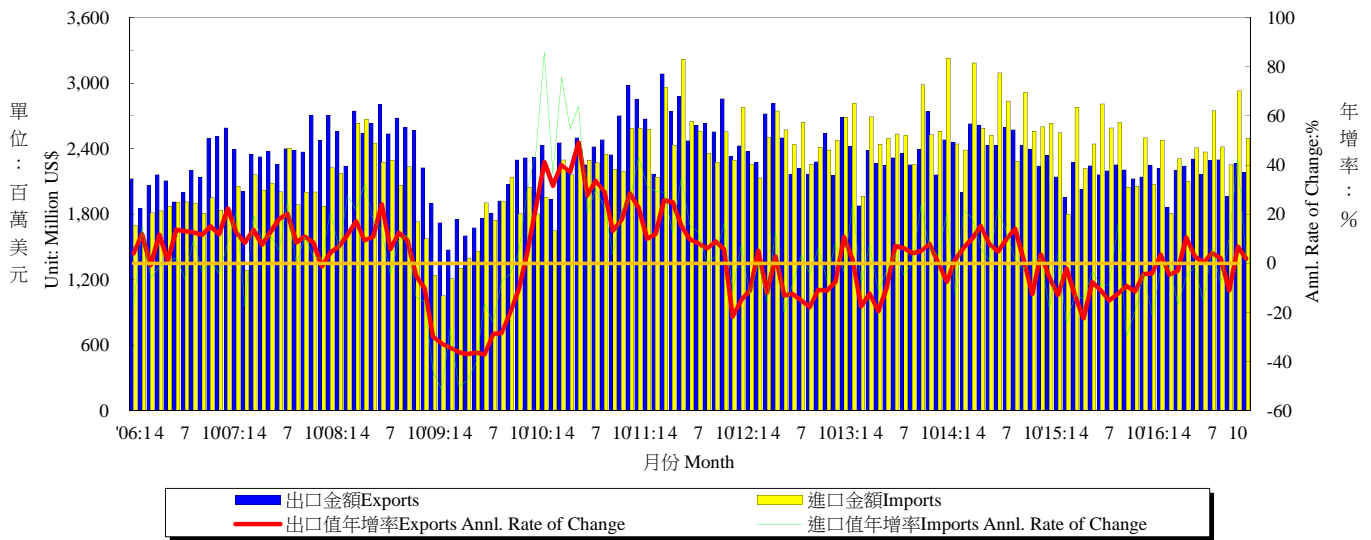
資料來源：財政部統計處，「105年11月海關進出口貿易統計速報」。

Source : Department of Statistics, Ministry of Finance, "Summary of Exports and Imports for Nov., 2016".

說明：東協包括新加坡、馬來西亞、菲律賓、泰國、印尼、越南、汶萊、寮國、緬甸及柬埔寨。

表十：臺灣對歐洲之進出口狀況

Table 10. Trade with Europe



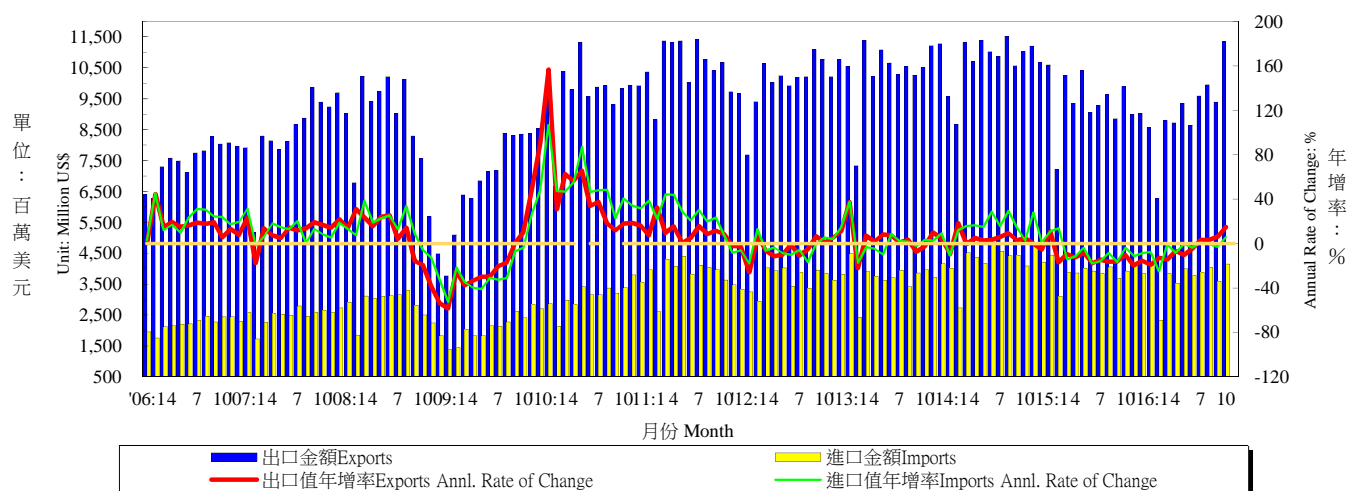
| 年與月<br>Year & Month | 出口值<br>Exports                        |                                     |                           | 進口值<br>Imports                        |                                     |                           | 出入超<br>Trade Balance                  | 貿易總額<br>Total Trade Amount            |                                     |
|---------------------|---------------------------------------|-------------------------------------|---------------------------|---------------------------------------|-------------------------------------|---------------------------|---------------------------------------|---------------------------------------|-------------------------------------|
|                     | 金額<br>(百萬美元)<br>Amount<br>(Mil. US\$) | 年增率<br>Annual rate of change<br>(%) | 份額<br>Export share<br>(%) | 金額<br>(百萬美元)<br>Amount<br>(Mil. US\$) | 年增率<br>Annual rate of change<br>(%) | 份額<br>Export share<br>(%) | 金額<br>(百萬美元)<br>Amount<br>(Mil. US\$) | 金額<br>(百萬美元)<br>Amount<br>(Mil. US\$) | 年增率<br>Annual rate of change<br>(%) |
| 2001                | 19,989                                | --                                  | 15.79                     | 15,168                                | --                                  | 13.84                     | 4,821                                 | 35,157                                | --                                  |
| 2002                | 18,808                                | -5.91                               | 13.85                     | 14,851                                | -2.09                               | 12.90                     | 3,957                                 | 33,659                                | -4.26                               |
| 2003                | 20,765                                | 10.41                               | 13.72                     | 16,459                                | 10.83                               | 12.64                     | 4,306                                 | 37,224                                | 10.59                               |
| 2004                | 23,820                                | 14.71                               | 12.97                     | 21,520                                | 30.75                               | 12.54                     | 2,300                                 | 45,340                                | 21.80                               |
| 2005                | 23,642                                | -0.75                               | 11.83                     | 22,142                                | 2.89                                | 11.94                     | 1,499                                 | 45,784                                | 0.98                                |
| 2006                | 26,151                                | 10.61                               | 11.58                     | 21,918                                | -1.01                               | 10.62                     | 4,233                                 | 48,069                                | 4.99                                |
| 2007                | 28,751                                | 9.94                                | 11.56                     | 23,996                                | 9.48                                | 10.75                     | 4,755                                 | 52,746                                | 9.73                                |
| 2008                | 30,024                                | 4.43                                | 11.63                     | 24,982                                | 4.11                                | 10.22                     | 5,042                                 | 55,006                                | 4.28                                |
| 2009                | 22,726                                | -24.31                              | 11.05                     | 19,776                                | -20.84                              | 11.14                     | 2,949                                 | 42,502                                | -22.73                              |
| 2010                | 29,546                                | 30.01                               | 10.63                     | 26,934                                | 36.20                               | 10.51                     | 2,612                                 | 56,481                                | 32.89                               |
| 2011                | 31,427                                | 6.37                                | 10.04                     | 30,775                                | 14.26                               | 10.68                     | 652                                   | 62,202                                | 10.13                               |
| 2012                | 28,897                                | -8.05                               | 9.43                      | 29,507                                | -4.12                               | 10.64                     | -610                                  | 58,404                                | -6.11                               |
| 2013                | 27,906                                | -3.43                               | 8.96                      | 31,012                                | 5.10                                | 11.16                     | -3,106                                | 58,918                                | 0.88                                |
| 2014                | 29,122                                | 4.36                                | 9.10                      | 32,045                                | 3.33                                | 11.37                     | -2,923                                | 61,168                                | 3.82                                |
| 2015                | 25,964                                | -10.85                              | 9.10                      | 28,499                                | -11.07                              | 12.01                     | -2,535                                | 54,462                                | -10.96                              |
| 2015 11             | 2,142                                 | -4.39                               | 9.50                      | 2,498                                 | -4.02                               | 12.20                     | -356                                  | 4,640                                 | -4.19                               |
| 12                  | 2,246                                 | -4.09                               | 10.00                     | 2,071                                 | -21.24                              | 11.30                     | 175                                   | 4,317                                 | -13.16                              |
| 2016 1              | 2,218                                 | 3.53                                | 10.00                     | 2,479                                 | -2.65                               | 13.30                     | -261                                  | 4,697                                 | 0.17                                |
| 2                   | 1,862                                 | -4.71                               | 10.50                     | 1,807                                 | 0.39                                | 13.30                     | 56                                    | 3,669                                 | -2.27                               |
| 3                   | 2,203                                 | -3.03                               | 9.70                      | 2,307                                 | -16.97                              | 12.70                     | -104                                  | 4,510                                 | -10.70                              |
| 4                   | 2,240                                 | 10.45                               | 10.10                     | 2,102                                 | -5.19                               | 12.00                     | 137                                   | 4,342                                 | 2.28                                |
| 5                   | 2,306                                 | 2.82                                | 9.80                      | 2,408                                 | -1.44                               | 12.00                     | -102                                  | 4,714                                 | 0.60                                |
| 6                   | 2,163                                 | 0.11                                | 9.50                      | 2,369                                 | -15.72                              | 12.30                     | -206                                  | 4,533                                 | -8.84                               |
| 7                   | 2,289                                 | 4.22                                | 9.50                      | 2,747                                 | 6.05                                | 13.40                     | -458                                  | 5,037                                 | 5.21                                |
| 8                   | 2,298                                 | 2.08                                | 9.30                      | 2,416                                 | -8.42                               | 11.70                     | -118                                  | 4,714                                 | -3.59                               |
| 9                   | 1,962                                 | -11.04                              | 8.70                      | 2,251                                 | 9.92                                | 12.40                     | -289                                  | 4,213                                 | -0.89                               |
| 10                  | 2,266                                 | 6.76                                | 8.50                      | 2,929                                 | 42.40                               | 13.10                     | -663                                  | 5,194                                 | 24.30                               |
| 11                  | 2,183                                 | 1.90                                | 8.60                      | 2,494                                 | -0.15                               | 11.80                     | -312                                  | 4,677                                 | 0.79                                |
| 1-當月                | 23,990                                | 1.15                                | 9.40                      | 26,309                                | -0.45                               | 12.50                     | -2,320                                | 50,299                                | 0.31                                |

資料來源：財政部統計處，「105年11月海關進出口貿易統計速報」。

Source : Department of Statistics, Ministry of Finance, "Summary of Exports and Imports for Nov., 2016".



表十一：兩岸經貿  
Table 11. Trade Across the Taiwan Straits



| 年與月<br>Year & Month | 臺灣對中國大陸及香港之進出口狀況<br>Trade With China and Hong Kong |  |                           |                                       |  |                           | 出入 超金額<br>百萬美元<br>Net Export<br>Amount<br>(Mil.US\$) | 匯率<br>人民幣兌<br>一美元<br>Exchange Rate<br>(RMB/US\$) | 中國大陸<br>消費者物價<br>總指數<br>年增率<br>China's<br>Consumer<br>Price Index |      |
|---------------------|--|--|---------------------------|---------------------------------------|--|---------------------------|--|--|---|------|
|                     | 出口值<br>Exports                                     |  |                           | 進口值<br>Imports                        |  |                           |  |  |   |      |
|                     | 金額<br>(百萬美元)<br>Amount<br>(Mil. US\$)              | 年增率<br>Annual rate of<br>change<br>(%) | 份額<br>Export share<br>(%) | 金額<br>(百萬美元)<br>Amount<br>(Mil. US\$) | 年增率<br>Annual rate of<br>change<br>(%) | 份額<br>Export share<br>(%) |  |  |   |      |
| 2001                | 33,810   | --                                     | 26.70                     | 7,833                                 | --                                     | 7.15                      | 25,977   | 8.28   | 0.73  |      |
| 2002                | 43,739   | 29.37                                  | 32.21                     | 9,795                                 | 25.04                                  | 8.51                      | 33,945   | 8.28   | -1.48   |      |
| 2003                | 54,192   | 23.90                                  | 35.81                     | 12,836                                | 31.05                                  | 9.86                      | 41,356   | 8.28   | 1.95  |      |
| 2004                | 69,791   | 28.78                                  | 38.00                     | 19,001                                | 48.03                                  | 11.08                     | 50,790   | 8.28   | 2.70  |      |
| 2005                | 78,276   | 12.16                                  | 39.19                     | 22,063                                | 16.11                                  | 11.90                     | 56,214   | 8.19   | -2.01   |      |
| 2006                | 90,046   | 15.04                                  | 39.86                     | 26,604                                | 20.58                                  | 12.89                     | 63,442   | 7.97   | -0.34   |      |
| 2007                | 101,203  | 12.39                                  | 40.68                     | 29,857                                | 12.23                                  | 13.38                     | 71,346   | 7.61   | 3.25  |      |
| 2008                | 100,571  | -0.62                                  | 38.97                     | 32,932                                | 10.30                                  | 13.47                     | 67,638   | 6.95   | 1.08  |      |
| 2009                | 84,640   | -15.84                                 | 41.15                     | 25,602                                | -22.26                                 | 14.42                     | 59,038   | 6.83   | -6.22   |      |
| 2010                | 116,220  | 37.31                                  | 41.80                     | 37,822                                | 47.73                                  | 14.76                     | 78,398   | 6.77   | 3.33  |      |
| 2011                | 125,971  | 8.39                                   | 40.26                     | 45,681                                | 20.78                                  | 15.86                     | 80,290   | 6.46   | 5.41  |      |
| 2012                | 121,161  | -3.82                                  | 39.54                     | 44,016                                | -3.64                                  | 15.87                     | 77,145   | 6.31   | 2.60  |      |
| 2013                | 125,305  | 3.42                                   | 40.24                     | 44,931                                | 2.08                                   | 16.16                     | 80,375   | 6.19   | 2.62  |      |
| 2014                | 128,534  | 2.58                                   | 40.16                     | 50,989                                | 13.48                                  | 18.09                     | 77,544   | 6.15   | 1.99  |      |
| 2015                | 112,540  | -12.44                                 | 39.44                     | 46,734                                | -8.35                                  | 19.70                     | 65,806   | 6.23   | 1.44  |      |
| 2015                | 11   | 9,000                                  | -19.70                    | 39.80                                 | 4,207                                  | -11.38                    | 20.60  | 4,793  | 6.36  | 1.50 |
|                     | 12   | 9,027                                  | -15.36                    | 40.00                                 | 3,836                                  | -8.80                     | 20.80  | 5,192  | 6.45  | 1.60 |
| 2016                | 1  | 8,557                                  | -19.24                    | 38.60                                 | 4,107                                  | -7.56                     | 22.00  | 4,451  | 6.57  | 1.80 |
|                     | 2  | 6,276                                  | -12.99                    | 35.30                                 | 2,323                                  | -25.06                    | 17.10  | 3,953  | 6.54  | 2.30 |
|                     | 3  | 8,795                                  | -14.26                    | 38.70                                 | 3,837                                  | -0.78                     | 21.10  | 4,958  | 6.51  | 2.30 |
|                     | 4  | 8,714                                  | -6.84                     | 39.20                                 | 3,525                                  | -8.51                     | 20.20  | 5,189  | 6.48  | 2.30 |
|                     | 5  | 9,348                                  | -10.17                    | 39.70                                 | 3,995                                  | -0.32                     | 19.90  | 5,353  | 6.53  | 2.00 |
|                     | 6  | 8,642                                  | -4.53                     | 37.80                                 | 3,776                                  | -3.65                     | 19.60  | 4,866  | 6.60  | 1.90 |
|                     | 7  | 9,593                                  | 3.42                      | 39.80                                 | 3,871                                  | 0.84                      | 18.90  | 5,721  | 6.68  | 1.80 |
|                     | 8  | 9,954                                  | 3.38                      | 40.40                                 | 4,029                                  | -0.56                     | 19.50  | 5,925  | 6.65  | 1.30 |
|                     | 9  | 9,391                                  | 6.15                      | 41.60                                 | 3,584                                  | -2.77                     | 19.70  | 5,808  | 6.67  | 1.90 |
|                     | 10   | 11,359                                 | 14.93                     | 42.50                                 | 4,151                                  | 5.77                      | 18.60  | 7,208  | 6.75  | 2.10 |
|                     | 11   | 10,707                                 | 18.97                     | 42.30                                 | 4,264                                  | 1.34                      | 20.20  | 6,443  | 6.84  | 2.30 |
|                     | 1-當月   | 101,337                                | -2.10                     | 39.80                                 | 41,461                                 | -3.35                     | 19.70  | 59,876   | 6.62  | 2.00 |

資料來源：財政部統計處，「105年11月海關進出口貿易統計速報」；中央銀行，「金融統計月報」；中國統計局。

Source : Department of Statistics, Ministry of Finance, "Summary of Exports and Imports for Nov., 2016".

Central Bank of Republic of China (Taiwan), "Financial Statistics Monthly, Republic of China (Taiwan)".

National Bureau of Statistics of China, "Consumer Prices for Nov., 2016".