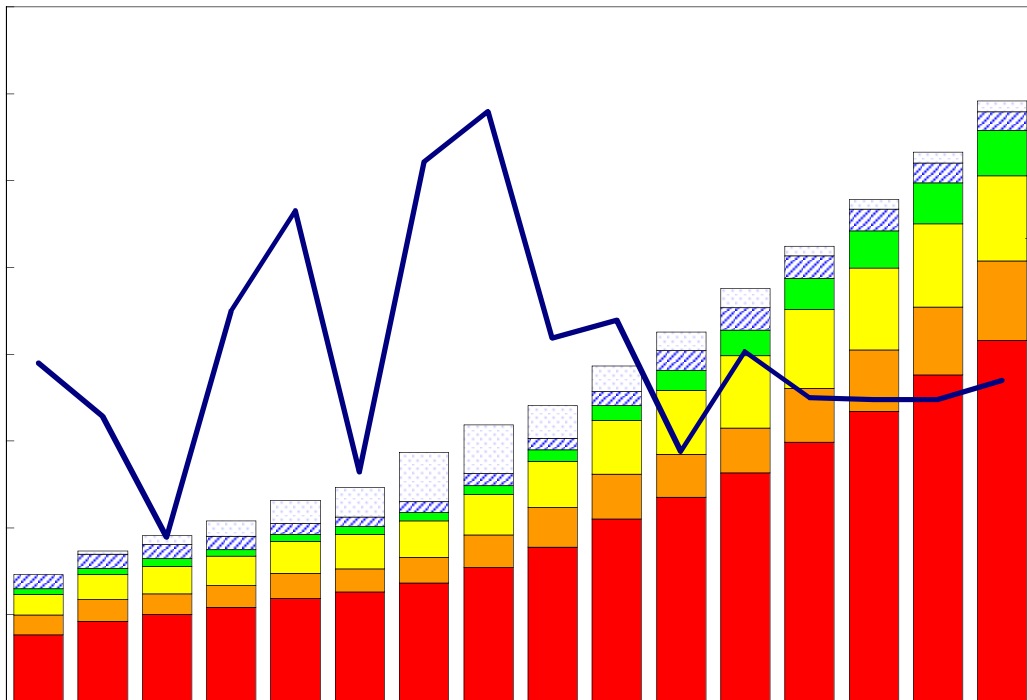


臺灣重要經濟變動指標

Major Economic Indicators for Taiwan



中華經濟研究院

經濟展望中心 編製

中華民國105年10月

Chung-Hua Institution for Economic Research

October 2016

目次

Index

| | |
|-----------------------|---|
| 臺灣經濟預測.....I | Taiwan's Macroeconomic Forecasts.....I |
| 表一：主要總體經濟指標.....2-3 | Table 1 : GDP Components by Expenditure.....2-3 |
| 表二：各業產值概況.....4-5 | Table 2 : GDP Components by Industry.....4-5 |
| 表三：生產概況.....6 | Table 3 : Industry Indicators.....6 |
| 表四：景氣概況.....7 | Table 4 : Cyclical Indicators.....7 |
| 表五：物價與金融概況.....8-9 | Table 5 : Prices and Financial Situation.....8-9 |
| 表六：臺灣進出口貿易.....10 | Table 6 : Foreign Trade Values.....10 |
| 表七：臺灣對美國之進出口狀況.....11 | Table 7 : Trade with the United States11 |
| 表八：臺灣對日本之進出口狀況.....12 | Table 8 : Trade with Japan.....12 |
| 表九：臺灣對東協六國之進出口狀況.13 | Table 9 : Trade with ASEAN6.....13 |
| 表十：臺灣對香港之進出口狀況.....14 | Table 10 : Trade with Hong Kong14 |
| 表十一：兩岸經貿.....15 | Table 11 : Trade across the Taiwan Straits.....15 |

臺灣經濟預測

Taiwan's Macroeconomic Forecasts

| | 2016年季預測 Year 2016 Quarterly | | | | 2015年 | 2016年 | 2017年 |
|---|---------------------------------|-----------|-----------|-----------|-------------|-------------|-------------|
| | 第1季 Q1 | 第2季 Q2 | 第3季 Q3 | 第4季 Q4 | 實際值 2015 | 預測值 2016 | 預測值 2017 |
| GDP, GNI及其組成, 新臺幣十億元, GDP, GNI and Major Components, Billions NT Dollars | | | | | | | |
| 實質GDP, Real GDP | 3,764.34 | 3,856.36 | 4,002.05 | 4,124.94 | 15,615.78 | 15,747.69 | 16,030.37 |
| 年變動率, yoy(%) | -0.68 | 0.43 | 1.44 | 2.08 | 0.65 | 0.84 | 1.80 |
| 每人平均GNI, per capita GNI^[1] | 5,672.62 | 5,549.41 | 5,858.75 | 6,010.97 | 23,181.28 | 23,091.74 | 23,747.99 |
| 年變動率, yoy(%) | -4.18 | -3.10 | 1.93 | 3.88 | -1.14 | -0.39 | 2.84 |
| 民間消費, Private Consumption | 2,189.28 | 2,158.08 | 2,183.92 | 2,176.60 | 8,593.27 | 8,707.88 | 8,854.38 |
| 年變動率, yoy(%) | 2.19 | 0.72 | 1.27 | 1.16 | 2.34 | 1.33 | 1.68 |
| 固定資本形成, Total Fixed Investment | 828.67 | 885.04 | 935.34 | 923.77 | 3,535.48 | 3,572.82 | 3,633.89 |
| 年變動率, yoy(%) | -0.50 | 0.89 | 1.38 | 2.32 | 1.23 | 1.06 | 1.71 |
| 民間投資, Private Fixed Investment | 722.18 | 719.76 | 776.79 | 689.98 | 2,894.38 | 2,908.71 | 2,966.06 |
| 年變動率, yoy(%) | -0.14 | 0.55 | 0.75 | 0.82 | 2.75 | 0.50 | 1.97 |
| 財貨與服務輸出, Exports, gds+serv | 2,666.8 | 2,831.8 | 2,902.9 | 3,031.9 | 11,449.0 | 11,433.3 | 11,631.8 |
| 年變動率, yoy(%) | -4.06 | 0.45 | 1.26 | 1.62 | -0.16 | -0.14 | 1.74 |
| 財貨與服務輸入, Imports, gds+serv | 2,456.5 | 2,578.8 | 2,604.1 | 2,638.8 | 10,240.8 | 10,278.1 | 10,428.2 |
| 年變動率, yoy(%) | -1.05 | -0.37 | 1.11 | 1.72 | 0.92 | 0.36 | 1.46 |
| 海關出口 (fob, 億美元), Merchandise Export(fob, US \$100 mil)[2] | 626.68 | 686.72 | 724.10 | 711.02 | 2,853.44 | 2,748.51 | 2,810.19 |
| 年變動率, yoy(%) | -12.11 | -6.20 | 1.66 | 2.15 | -10.86 | -3.68 | 2.24 |
| 海關進口 (cif, 億美元), Merchandise Import (cif, US \$100mil)[2] | 505.14 | 567.92 | 604.49 | 591.76 | 2,372.19 | 2,269.31 | 2,293.93 |
| 年變動率, yoy(%) | -13.99 | -7.63 | 1.71 | 2.78 | -15.83 | -4.34 | 1.09 |
| 躉售物價指數, Wholesale Price Index [2] | 84.60 | 84.96 | 84.70 | 84.62 | 87.41 | 84.72 | 85.83 |
| 年變動率, yoy(%) | -4.99 | -3.19 | -2.89 | -1.14 | -8.85 | -3.07 | 1.31 |
| 消費者物價指數, Consumer Price Index [2] | 104.24 | 104.66 | 106.02 | 105.32 | 103.65 | 105.06 | 106.36 |
| 年變動率, yoy(%) | 1.74 | 1.33 | 1.54 | 0.83 | -0.31 | 1.36 | 1.23 |
| M2貨幣存量(日平均), Money Stock (M2) | 40,270.3 | 40,517.2 | 41,101.6 | 41,495.9 | 38,894.1 | 40,846.2 | 43,084.5 |
| 年變動率, yoy(%) | 5.20 | 4.45 | 5.16 | 5.26 | 6.34 | 5.02 | 5.48 |
| 臺幣兌美元匯率, Exchange Rate(NT\$/US\$)[2] | 33.35 | 32.44 | 32.24 | 32.30 | 31.91 | 32.58 | 32.35 |
| 年變動率, yoy(%) ^[3] | -5.56 | -4.69 | -0.10 | 1.67 | -5.06 | -2.11 | 0.72 |
| 商業本票利率, 31-90 day Commercial Paper Rate | 0.40 | 0.30 | 0.28 | 0.25 | 0.58 | 0.31 | 0.33 |
| 失業率(%), Unemployment Rate(%) | 3.90 | 3.99 | 4.11 | 4.02 | 3.78 | 4.01 | 4.02 |

說明：有關匯率變動百分比，正值表示升值，負數表示貶值比率。

資料來源：中華經濟研究院，經濟展望中心，2016年7月19日。

Source: CEF, CIER, July 19, 2016.

說明：[1]：有關每人平均GNI在此以美元表示。

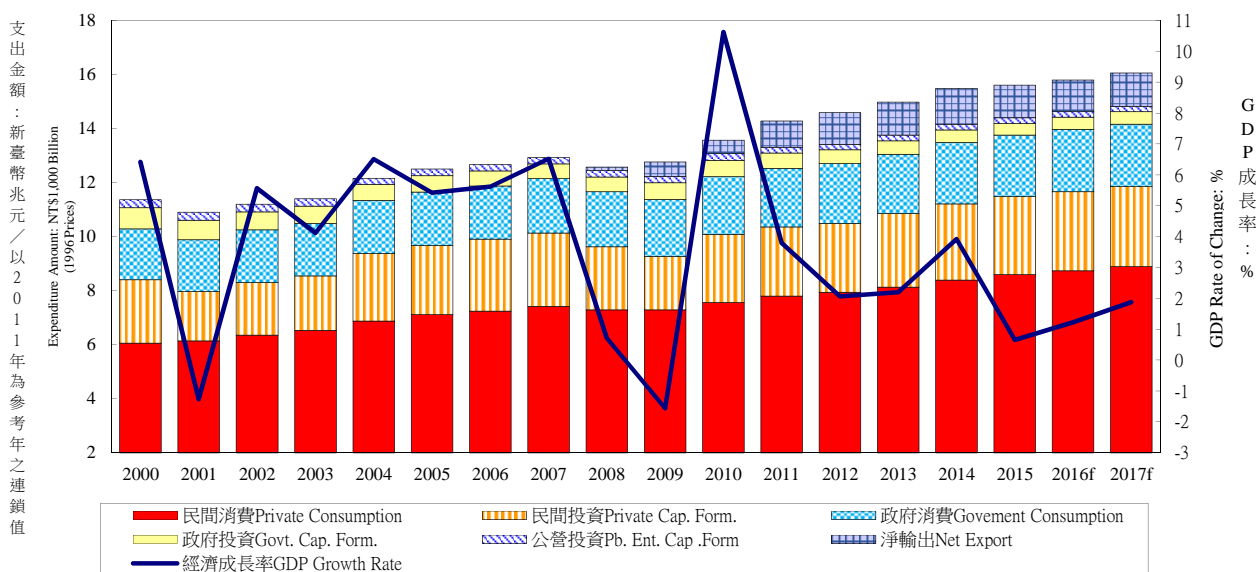
[2]：表示2016年第2季資料為官方統計之粗估值，非預測值。

[3]：有關匯率年增率(%)，正值表示升值，負數表示貶值比率。

表一：主要總體經濟指標

Table 1. GDP Components by Expenditure

實質GDP各需求支出及成長率 Real GDP Expenditure & Growth Rate



| 年與季 Year & Quarter | GDP 經濟 成長率 Economic Growth Rate (%) | 名目GDP (新台幣 十億元) GDP (Bil.NT\$) | 民間消費 Private Consumption Expenditure | | 民間固定投資 Private Spe. Gross Fixed Cap. Formation | | 商品及勞務輸出 Exports of Goods and Services | | 商品及勞務輸入 Imports of Goods and Services | | 政府消費 Government Consumption Expenditure | |
|-----------------------|---|--|---|---|--|---|---|---|---|---|--|---|
| | | | 占 GDP /GDP (%) | 年增率 Annual Rate of Change (%) | 占 GDP /GDP (%) | 年增率 Annual Rate of Change (%) | 占 GDP /GDP (%) | 年增率 Annual Rate of Change (%) | 占 GDP /GDP (%) | 年增率 Annual Rate of Change (%) | 占 GDP /GDP (%) | 年增率 Annual Rate of Change (%) |
| 2000 | 6.42 | 10,351 | 55.13 | 5.24 | 18.47 | 14.52 | 51.91 | 18.00 | 49.92 | 14.85 | 15.69 | 0.62 |
| 2001 | -1.26 | 10,158 | 56.67 | 1.43 | 14.53 | -22.47 | 48.66 | -8.47 | 43.45 | -14.57 | 16.70 | 2.44 |
| 2002 | 5.57 | 10,681 | 55.74 | 3.48 | 14.75 | 6.60 | 50.81 | 11.64 | 43.93 | 6.39 | 16.38 | 1.77 |
| 2003 | 4.12 | 10,966 | 55.63 | 2.86 | 15.12 | 3.21 | 54.02 | 10.02 | 47.32 | 7.56 | 15.98 | -0.66 |
| 2004 | 6.51 | 11,650 | 55.72 | 5.26 | 18.68 | 24.58 | 59.94 | 15.73 | 56.49 | 17.64 | 15.47 | 1.13 |
| 2005 | 5.42 | 12,092 | 56.10 | 3.36 | 18.29 | 2.43 | 60.62 | 7.62 | 56.44 | 2.90 | 15.26 | 0.42 |
| 2006 | 5.62 | 12,641 | 54.96 | 1.79 | 18.83 | 4.57 | 65.79 | 11.38 | 60.03 | 4.66 | 14.67 | -0.63 |
| 2007 | 6.52 | 13,407 | 53.69 | 2.42 | 18.66 | 1.88 | 69.74 | 10.45 | 61.79 | 2.89 | 14.34 | 2.20 |
| 2008 | 0.70 | 13,151 | 55.21 | -1.69 | 17.37 | -14.15 | 70.19 | 0.55 | 65.00 | -4.13 | 15.14 | 1.54 |
| 2009 | -1.57 | 12,962 | 55.36 | 0.01 | 14.94 | -15.32 | 60.39 | -8.42 | 51.51 | -13.22 | 15.86 | 3.22 |
| 2010 | 10.63 | 14,119 | 53.10 | 3.76 | 17.68 | 27.63 | 70.92 | 25.67 | 63.85 | 28.03 | 14.86 | 1.05 |
| 2011 | 3.80 | 14,312 | 54.49 | 3.12 | 17.88 | 1.20 | 72.80 | 4.20 | 66.08 | -0.46 | 15.15 | 1.95 |
| 2012 | 2.06 | 14,687 | 54.71 | 1.82 | 17.48 | -0.35 | 70.44 | 0.41 | 62.99 | -1.78 | 15.35 | 2.16 |
| 2013 | 2.20 | 15,231 | 54.16 | 2.34 | 17.63 | 7.09 | 69.46 | 3.50 | 60.41 | 3.40 | 14.72 | -0.79 |
| 2014 | 3.92 | 16,097 | 53.31 | 3.33 | 17.45 | 3.17 | 69.94 | 5.91 | 59.61 | 5.65 | 14.55 | 3.55 |
| 2015 | 0.65 | 16,688 | 52.30 | 2.34 | 16.98 | 2.75 | 64.58 | -0.16 | 51.58 | 0.92 | 13.93 | -0.33 |
| 2016f | 1.22 | 16,970 | 52.64 | 1.59 | 17.03 | 1.15 | 62.51 | 1.45 | 50.05 | 1.95 | 14.15 | 1.91 |
| 2017f | 1.88 | 17,294 | 52.90 | 1.75 | 17.13 | 1.51 | 62.92 | 3.08 | 50.83 | 2.85 | 14.00 | 0.10 |
| 2016 1r | -0.29 | 4,232 | 52.83 | 2.53 | 17.15 | 0.16 | 59.11 | -4.04 | 46.79 | -1.49 | 15.56 | 5.47 |
| 2p | 0.70 | 4,103 | 53.98 | 1.23 | 17.26 | 1.13 | 64.54 | 0.63 | 52.92 | 0.21 | 13.45 | 1.96 |
| 3f | 1.99 | 4,279 | 52.51 | 1.54 | 18.02 | 1.23 | 63.27 | 4.50 | 50.99 | 4.48 | 13.41 | 0.19 |
| 4r | 2.38 | 4,356 | 51.32 | 1.06 | 15.73 | 2.12 | 63.15 | 4.40 | 49.59 | 4.47 | 14.18 | 0.53 |
| 2017 1f | 2.04 | 4,273 | 53.22 | 1.52 | 17.62 | 1.99 | 59.51 | 5.19 | 48.38 | 5.62 | 15.29 | -1.32 |
| 2f | 1.80 | 4,193 | 54.05 | 1.77 | 17.32 | 1.59 | 65.12 | 4.15 | 53.45 | 3.99 | 13.12 | -0.82 |
| 3f | 1.68 | 4,365 | 52.90 | 1.85 | 17.95 | 0.91 | 63.46 | 1.74 | 51.44 | 1.35 | 13.37 | 0.92 |
| 4f | 2.00 | 4,462 | 51.51 | 1.88 | 15.67 | 1.59 | 63.58 | 1.59 | 50.12 | 0.76 | 14.20 | 1.40 |

資料來源：行政院主計總處，「國民所得統計及國內經濟情勢展望」，2016年8月19日；

註：1. 以上所列為政府發佈資料，本院對GDP的預測列於本刊第一部份臺灣總體經濟預測。

2. 2014年第2季(含)以前歷年各季資料均已依5年修正結果追溯修正。

3. 2014年11月起主計總處由定基法改以連鎖法衡量經濟成長率。

4. 2016年第1季為主計總處發布之概估數字。

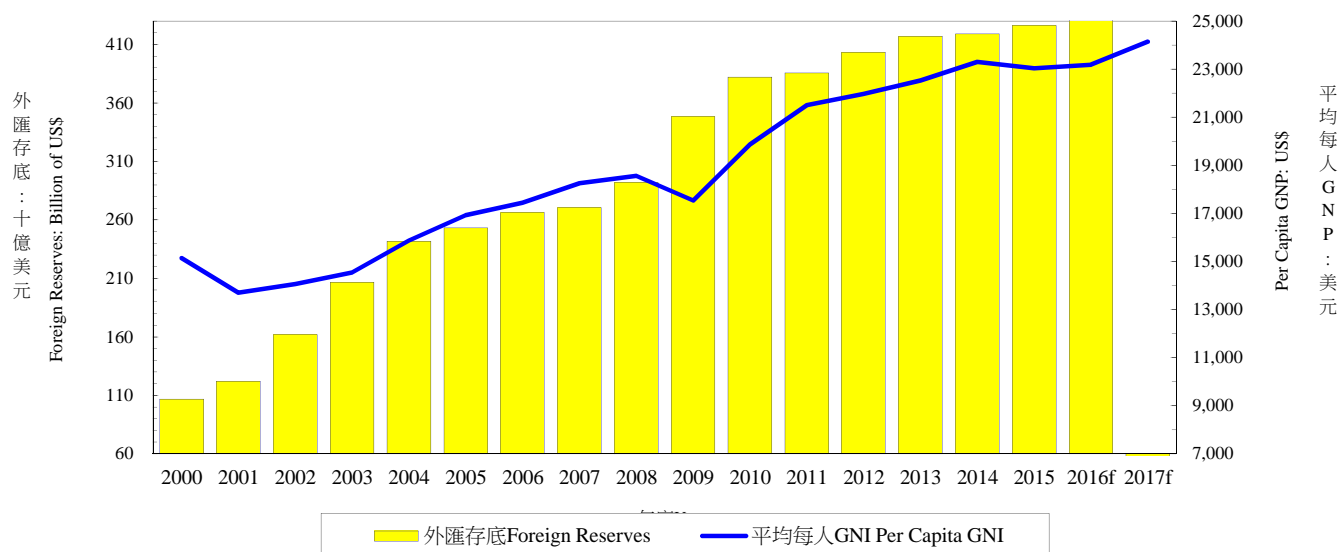
Source：Directorate General of Budget, Accounting and Statistics, Executive Yuan, R.O.C..

表一：主要總體經濟指標

Table 1. GDP Components by Expenditure

外匯存底及平均每人GNI

Total Foreign Reserves & Per Capita GNI



| 年與季 Year & Quarter | 公營事業固定投資 Public Enter. Gross Fixed Capita Formation | | 政府固定投資 Government Gross Fixed Capita Formation | | 存貨增加 Increase in Stocks | | 國外要素所得淨額 Net Factor Income from the Rest of the World | | 平均每人 GNI (美元) Per Capita GNI (US\$) | 外匯存底 (十億美元) Total Foreign Reserves (Billion of US\$) |
|-----------------------|---|--|--|--|----------------------------|--|---|--|---|--|
| | 占 GDP /GDP (%) | 年增率 Annual Rate of Change (%) | 占 GDP /GDP (%) | 年增率 Annual Rate of Change (%) | 占 GDP /GDP (%) | 新台幣 百萬元 (以2011年為參考 年之連鎖值) NT Mil | 占 GDP /GDP (%) | 新台幣 百萬元 (以2011年為參考 年之連鎖值) NT Mil | | |
| 2000 | 2.39 | -3.56 | 5.44 | -3.50 | 0.89 | 98,430 | 1.35 | 154,869 | 15,142 | 106.7 |
| 2001 | 2.43 | 0.68 | 5.07 | -8.26 | -0.62 | -75,925 | 1.89 | 213,487 | 13,703 | 122.2 |
| 2002 | 2.23 | -2.97 | 4.42 | -9.69 | -0.41 | -46,186 | 2.27 | 270,147 | 14,062 | 161.7 |
| 2003 | 2.11 | -4.42 | 4.35 | -2.73 | 0.11 | 12,710 | 3.00 | 367,375 | 14,544 | 206.6 |
| 2004 | 1.66 | -19.36 | 4.16 | -7.04 | 0.86 | 86,782 | 3.19 | 409,490 | 15,879 | 241.7 |
| 2005 | 1.77 | 12.77 | 4.12 | 2.65 | 0.28 | 33,677 | 2.41 | 313,759 | 16,930 | 253.3 |
| 2006 | 1.59 | -7.73 | 3.81 | -8.00 | 0.38 | 42,769 | 2.47 | 333,420 | 17,446 | 266.1 |
| 2007 | 1.57 | 2.20 | 3.68 | -2.80 | 0.12 | 16,971 | 2.48 | 350,310 | 18,256 | 270.3 |
| 2008 | 1.65 | -1.98 | 4.13 | 0.44 | 1.30 | 166,513 | 2.39 | 320,632 | 18,564 | 291.7 |
| 2009 | 1.78 | 2.37 | 4.59 | 14.07 | -1.40 | -193,262 | 3.19 | 423,658 | 17,531 | 348.2 |
| 2010 | 1.77 | 7.49 | 4.17 | -2.92 | 1.34 | 196,426 | 3.04 | 435,627 | 19,864 | 382.0 |
| 2011 | 1.54 | -13.44 | 3.97 | -5.78 | 0.25 | 35,921 | 2.71 | 388,372 | 21,507 | 385.5 |
| 2012 | 1.39 | -7.42 | 3.48 | -10.95 | 0.15 | 22,029 | 3.09 | 445,579 | 21,967 | 403.2 |
| 2013 | 1.32 | 2.99 | 3.23 | -2.79 | -0.12 | -18,535 | 2.78 | 411,781 | 22,526 | 416.8 |
| 2014 | 1.32 | 5.31 | 2.88 | -7.36 | 0.17 | 28,123 | 2.92 | 451,147 | 23,308 | 419.0 |
| 2015 | 1.15 | -6.94 | 2.59 | -4.30 | 0.05 | 8,775 | 3.36 | 539,577 | 23,040 | 426.0 |
| 2016f | 1.16 | 0.52 | 2.61 | 2.80 | -0.05 | -8,327 | -- | -- | 23,178 | -- |
| 2017f | 1.16 | 1.04 | 2.61 | 0.87 | 0.12 | 20,098 | -- | -- | 24,143 | -- |
| 2016 1r | 0.65 | -3.02 | 1.89 | -3.09 | -0.39 | -16,464 | -- | -- | 5,651 | 431.6 |
| 2p | 1.18 | -2.33 | 2.41 | -7.01 | 0.10 | 4,253 | -- | -- | 5,516 | 433.6 |
| 3f | 1.06 | 3.87 | 2.63 | 7.39 | 0.08 | 3,447 | -- | -- | 5,920 | 436.7 |
| 4r | 1.73 | 1.81 | 3.48 | 10.27 | 0.01 | 437 | -- | -- | 6,091 | -- |
| 2017 1f | 0.66 | 0.50 | 1.96 | 3.33 | 0.12 | 4,921 | -- | -- | 6,037 | -- |
| 2f | 1.18 | 1.05 | 2.53 | 5.67 | 0.11 | 4,733 | -- | -- | 5,809 | -- |
| 3f | 1.06 | 1.37 | 2.56 | -1.27 | 0.13 | 5,865 | -- | -- | 6,074 | -- |
| 4f | 1.71 | 1.02 | 3.34 | -1.92 | 0.10 | 4,579 | -- | -- | 6,223 | -- |

資料來源：行政院主計總處，「國民所得統計及國內經濟情勢展望」，2016年8月19日。

註：1. 以上所列为政府發佈資料，本院對GDP的預測列於本刊第一部份臺灣總體經濟預測。

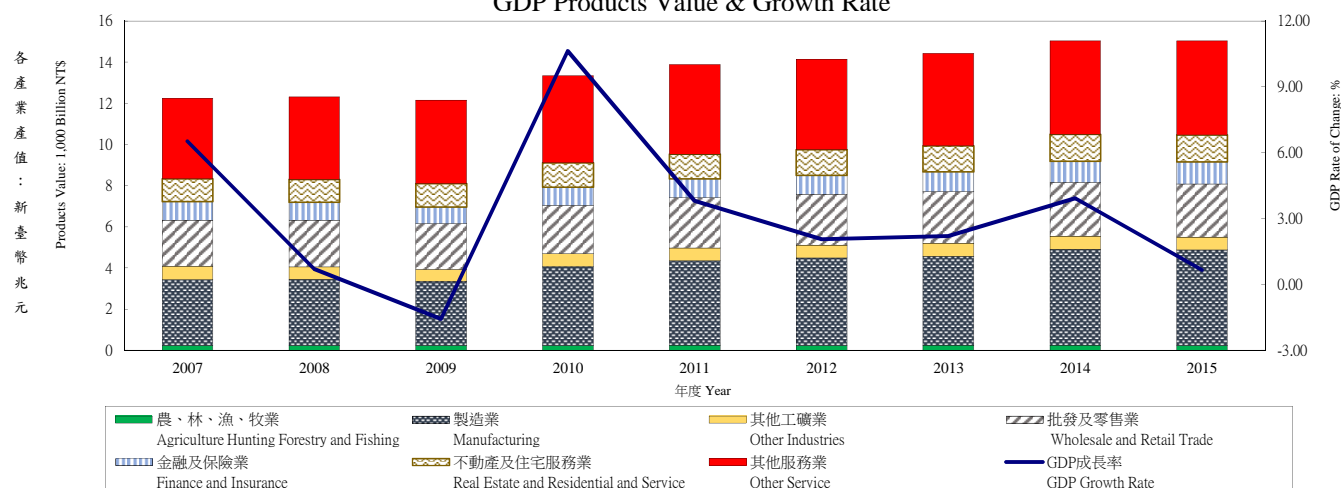
2. 2014年第2季(含)以前歷年各季資料均已依5年修正結果追溯修正。

3. 2014年11月起主計總處由定基法改以連鎖法衡量經濟成長率。

4. 2016年第1季為主計總處發布之概估數字。

Source：Directorate General of Budget, Accounting and Statistics, Executive Yuan, R.O.C.; Central Bank of Republic of China (Taiwan).

表二：各業產值概況
Table 2. GDP Components by Industry
GDP各產業產值及成長率
GDP Products Value & Growth Rate



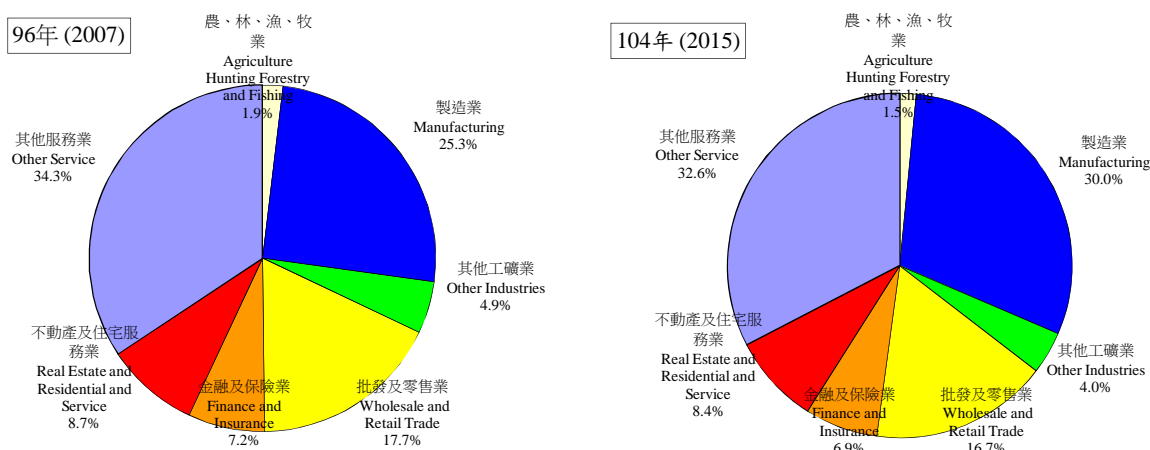
| 年與季 Year & Quarter | 國內 生產毛額 GDP (新臺幣 十億元) 以2011年為參 考年之連鎖值 計算GDP (Bil. NTS) | GDP 成長率 GDP Rate of Change (%) | 產業 Sector | | | | | | | | | | | | | | | |
|--------------------------|--|---|---|---|----------------------------------|---|----------------------|---|---|---|--|---|---------------------|---|---------------------|---|---------------------|--|
| | | | 農、林、漁、牧業 Agriculture Hunting Forestry and Fishing | | 工業 Industries | | | | | | | | | | | | 營造業 Construction | |
| | | | 合計 Sub Total | | 礦業及土石採取業 Mining and Quarrying | | 製造業 Manufacturing | | 電力及燃氣供應業 Electricity and Gas Supply | | 用水供應及汙染整治業 Water Supply and Remediation Services | | 營造業 Construction | | | | | |
| | | | 占GDP /GDP (%) | 年增率 Annual Rate of Change (%) | 占GDP /GDP (%) | 年增率 Annual Rate of Change (%) | 占GDP /GDP (%) | 年增率 Annual Rate of Change (%) | 占GDP /GDP (%) | 年增率 Annual Rate of Change (%) | 占GDP /GDP (%) | 年增率 Annual Rate of Change (%) | 占GDP /GDP (%) | 年增率 Annual Rate of Change (%) | 占GDP /GDP (%) | 年增率 Annual Rate of Change (%) | | |
| 2007 | 12,573 | 6.52 | 1.45 | -0.02 | 34.04 | 11.07 | 0.16 | -0.20 | 29.59 | 12.92 | 1.02 | -7.29 | 0.69 | 10.66 | 2.57 | 1.06 | | |
| 2008 | 12,661 | 0.70 | 1.55 | 0.02 | 32.09 | -0.37 | 0.17 | -9.20 | 28.27 | 0.42 | 0.31 | -1.03 | 0.70 | 4.59 | 2.65 | -9.12 | | |
| 2009 | 12,463 | -1.57 | 1.68 | -2.60 | 31.99 | -2.86 | 0.13 | -10.07 | 27.21 | -2.51 | 1.47 | 26.63 | 0.69 | 1.24 | 2.48 | -10.16 | | |
| 2010 | 13,788 | 10.63 | 1.60 | 2.25 | 33.99 | 20.83 | 0.13 | 44.39 | 29.29 | 22.66 | 1.30 | 4.80 | 0.68 | 4.43 | 2.60 | 13.68 | | |
| 2011 | 14,312 | 3.80 | 1.72 | 4.52 | 33.02 | 5.98 | 0.12 | -4.80 | 28.66 | 6.79 | 0.88 | 2.79 | 0.68 | -1.73 | 2.68 | 0.99 | | |
| 2012 | 14,608 | 2.06 | 1.67 | -3.20 | 32.75 | 3.29 | 0.11 | -1.01 | 28.37 | 3.72 | 0.93 | 1.69 | 0.69 | 6.38 | 2.65 | -1.39 | | |
| 2013 | 14,929 | 2.20 | 1.69 | 1.35 | 33.46 | 1.67 | 0.10 | -4.18 | 28.75 | 1.70 | 1.33 | 3.12 | 0.66 | 2.26 | 2.61 | 0.93 | | |
| 2014 | 15,515 | 3.92 | 1.81 | 0.52 | 34.55 | 6.96 | 0.10 | -3.65 | 29.75 | 7.93 | 1.51 | 1.71 | 0.63 | 3.08 | 2.56 | 0.42 | | |
| 2015 | 15,616 | 0.65 | 1.78 | -3.88 | 35.41 | -0.86 | 0.10 | -6.44 | 30.34 | -0.52 | 1.86 | -6.97 | 0.58 | -1.09 | 2.53 | -1.03 | | |
| 2011 1 | 3,437 | 7.37 | 1.55 | 5.51 | 33.56 | 14.60 | 0.12 | 6.42 | 29.03 | 15.97 | 1.00 | 8.41 | 0.56 | -3.46 | 2.84 | 6.09 | | |
| 2011 2 | 3,561 | 4.28 | 1.87 | 4.63 | 33.58 | 9.13 | 0.12 | -2.50 | 29.09 | 9.96 | 0.83 | -7.11 | 0.77 | -3.59 | 2.79 | 5.83 | | |
| 2011 3 | 3,674 | 3.32 | 1.54 | 1.73 | 33.71 | 3.43 | 0.11 | -8.99 | 29.20 | 4.46 | 1.15 | -7.70 | 0.70 | -4.91 | 2.55 | -1.06 | | |
| 2011 4 | 3,640 | 0.68 | 1.91 | 6.01 | 31.23 | -0.88 | 0.14 | -8.34 | 27.34 | -0.67 | 0.53 | 16.88 | 0.68 | -2.73 | 2.53 | -4.19 | | |
| 2012 1 | 3,464 | 0.78 | 1.54 | -4.76 | 31.33 | 0.57 | 0.11 | -0.53 | 27.05 | 0.79 | 0.68 | -5.53 | 0.63 | 9.11 | 2.86 | -2.71 | | |
| 2012 2 | 3,576 | 0.42 | 1.86 | -2.59 | 32.93 | 1.89 | 0.10 | 1.11 | 29.04 | 2.26 | 0.27 | -13.70 | 0.79 | 6.93 | 2.73 | -1.97 | | |
| 2012 3 | 3,759 | 2.31 | 1.64 | 0.57 | 34.63 | 4.47 | 0.09 | -2.45 | 29.80 | 5.29 | 1.51 | -8.73 | 0.70 | 5.62 | 2.53 | -0.43 | | |
| 2012 4 | 3,808 | 4.63 | 1.64 | -5.62 | 32.07 | 5.98 | 0.12 | -1.94 | 27.58 | 6.24 | 1.22 | 25.64 | 0.66 | 4.39 | 2.48 | -0.19 | | |
| 2013 1 | 3,514 | 1.46 | 1.59 | -3.27 | 31.76 | 1.27 | 0.11 | -2.84 | 27.13 | 1.13 | 1.05 | 1.07 | 0.60 | 1.67 | 2.87 | 2.23 | | |
| 2013 2 | 3,666 | 2.51 | 1.81 | 6.01 | 34.02 | 1.38 | 0.10 | -2.31 | 29.53 | 1.50 | 1.04 | 2.12 | 0.75 | 3.60 | 2.61 | 0.07 | | |
| 2013 3 | 3,815 | 1.47 | 1.52 | -3.39 | 35.49 | 2.18 | 0.09 | -6.25 | 30.42 | 2.26 | 1.80 | 7.31 | 0.68 | 3.05 | 2.50 | 0.12 | | |
| 2013 4 | 3,934 | 3.31 | 1.82 | 4.76 | 32.54 | 1.78 | 0.11 | -5.19 | 27.90 | 1.81 | 1.42 | 2.19 | 0.63 | 0.70 | 2.48 | 1.41 | | |
| 2014 1 | 3,643 | 3.66 | 1.91 | 3.63 | 32.45 | 4.78 | 0.10 | -9.58 | 27.52 | 5.24 | 1.48 | 11.49 | 0.57 | 3.11 | 2.79 | 0.02 | | |
| 2014 2 | 3,818 | 4.15 | 2.05 | -1.38 | 35.15 | 7.01 | 0.10 | -4.02 | 30.47 | 7.94 | 1.31 | 15.85 | 0.70 | 1.72 | 2.56 | 0.59 | | |
| 2014 3 | 3,977 | 4.26 | 1.56 | -4.57 | 36.34 | 8.25 | 0.09 | -1.19 | 31.11 | 9.44 | 2.04 | 3.76 | 0.64 | 3.33 | 2.45 | 0.32 | | |
| 2014 4 | 4,077 | 3.63 | 1.75 | 4.13 | 34.17 | 7.53 | 0.13 | -0.21 | 29.81 | 8.71 | 1.20 | -11.26 | 0.59 | 4.12 | 2.44 | 0.83 | | |
| 2015 1 | 3,790 | 4.04 | 1.67 | 1.94 | 35.09 | 6.13 | 0.11 | 2.63 | 30.10 | 7.23 | 1.67 | -0.42 | 0.51 | -1.54 | 2.69 | 0.04 | | |
| 2015 2 | 3,840 | 0.57 | 1.90 | -2.81 | 36.10 | -0.79 | 0.10 | -6.36 | 31.11 | -0.27 | 1.66 | -7.81 | 0.65 | -1.91 | 2.58 | -1.32 | | |
| 2015 3 | 3,945 | -0.80 | 1.72 | -1.32 | 36.70 | -3.27 | 0.08 | -12.51 | 31.14 | -3.25 | 2.42 | -5.94 | 0.61 | -1.17 | 2.44 | -1.44 | | |
| 2015 4 | 4,041 | -0.89 | 1.85 | -11.08 | 33.80 | -4.44 | 0.12 | -8.82 | 29.03 | -4.41 | 1.67 | -11.75 | 0.57 | 0.17 | 2.41 | -1.50 | | |
| 2016 1r | 3,779 | -0.29 | 1.83 | -11.74 | 34.22 | -3.11 | 0.09 | -15.40 | 29.33 | -3.20 | 1.73 | 0.04 | 0.51 | -0.48 | 2.57 | -4.52 | | |
| 2016 2p | 3,867 | 0.70 | 2.09 | -8.71 | 35.75 | 0.27 | 0.09 | -5.35 | 30.69 | -0.03 | 1.82 | 17.96 | 0.67 | -0.04 | 2.47 | -2.17 | | |

資料來源：行政院主計總處，「國民所得統計及國內經濟情勢展望」，2016年8月19日。

- 註：1. 以上所列為政府發佈資料，本院對GDP的預測列於本刊第一部份臺灣總體經濟預測。
2. 2014年第2季(含)以前歷年各季資料均已依5年修正結果追溯修正。
3. 2016年第1季為主計總處發布之概估數字。

Source : Directorate General of Budget, Accounting and Statistics, Executive Yuan, R.O.C..

表二：各業產值概況
Table 2. GDP Components by Industry
GDP各產業產值及成長率
GDP Products Value & Growth Rate



註：本圖因未加上進口稅、加值型營業稅及減掉設算銀行服務費，所佔百分比與下表佔GDP百分比有些微差異。

Note: Import duties, Value added taxes and imputed bank services charge are not included; therefore the percentage is different from the table.

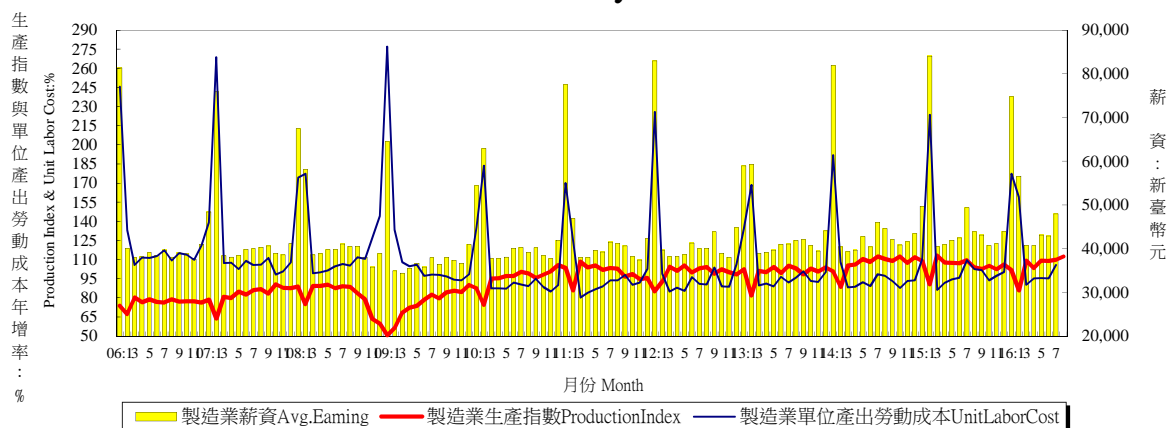
| 年與季 Year & Quarter | 產業 Sector | | | | | | | | | | | | | | | |
|--------------------------|---------------|-------------------------------|-----------------------------------|-------------------------------|-----------------------------------|-------------------------------|--|-------------------------------|------------------------------|-------------------------------|---|-------------------------------|---|-------------------------------|-------------------|-------------------------------|
| | 服務業 Services | | | | | | | | | | | | | | | |
| | 合計 Sub-Total | | 批發及零售業 Wholesale and Retail Trade | | 運輸及倉儲業 Transportation and Storage | | 資訊及通訊傳播業 Information and Communication | | 金融及保險業 Finance and Insurance | | 不動產及住宅服務業 Real Estate and Residential and Service | | 公共行政及國防；強制性社會安全 Public Administration and Defence; Compulsory Social Security | | 其他 Other Services | |
| | 估GDP /GDP (%) | 年增率 Annual Rate of Change (%) | 估GDP /GDP (%) | 年增率 Annual Rate of Change (%) | 估GDP /GDP (%) | 年增率 Annual Rate of Change (%) | 估GDP /GDP (%) | 年增率 Annual Rate of Change (%) | 估GDP /GDP (%) | 年增率 Annual Rate of Change (%) | 估GDP /GDP (%) | 年增率 Annual Rate of Change (%) | 估GDP /GDP (%) | 年增率 Annual Rate of Change (%) | 估GDP /GDP (%) | 年增率 Annual Rate of Change (%) |
| 2007 | 65.59 | -- | 16.68 | -- | 3.01 | -- | 3.21 | -- | 7.13 | -- | 8.43 | -- | 7.16 | -- | 18.90 | -- |
| 2008 | 67.15 | 0.75 | 17.30 | 2.25 | 2.92 | 0.31 | 3.34 | 4.73 | 7.01 | -3.66 | 8.67 | 0.52 | 7.60 | 0.97 | 19.52 | 0.46 |
| 2009 | 66.82 | -0.69 | 17.02 | -1.91 | 2.79 | -3.40 | 3.44 | 4.30 | 6.23 | -7.17 | 9.07 | 1.95 | 7.76 | 0.82 | 20.02 | -0.13 |
| 2010 | 64.63 | 5.80 | 16.67 | 6.44 | 3.01 | 6.99 | 3.26 | 9.02 | 6.19 | 7.33 | 8.50 | 3.18 | 7.35 | 3.10 | 19.42 | 6.85 |
| 2011 | 65.27 | 3.02 | 17.07 | 4.02 | 2.78 | 2.84 | 3.23 | 4.26 | 6.39 | 4.04 | 8.47 | 1.10 | 7.37 | 0.03 | 19.96 | 3.96 |
| 2012 | 65.58 | 1.27 | 16.88 | 1.10 | 2.87 | 1.83 | 3.18 | 3.05 | 6.42 | 1.09 | 8.55 | 1.81 | 7.41 | 0.70 | 20.27 | 1.11 |
| 2013 | 64.85 | 2.29 | 16.97 | 1.61 | 2.79 | 7.64 | 3.08 | 3.39 | 6.41 | 4.00 | 8.49 | 2.95 | 7.01 | -0.65 | 20.09 | 2.17 |
| 2014 | 63.64 | 2.92 | 16.48 | 3.90 | 2.84 | 0.59 | 2.95 | 2.09 | 6.58 | 7.56 | 8.26 | 1.93 | 6.69 | -0.36 | 19.85 | 2.61 |
| 2015 | 62.80 | 0.47 | 15.92 | -1.06 | 3.31 | 0.98 | 2.82 | 2.70 | 6.58 | 3.54 | 8.14 | 0.88 | 6.43 | 0.53 | 19.61 | 0.14 |
| 2011 1 | 64.89 | 5.33 | 16.53 | 8.02 | 2.82 | 2.50 | 3.04 | 5.61 | 6.10 | 6.19 | 8.27 | 3.08 | 8.26 | 1.01 | 19.87 | 5.58 |
| 2011 2 | 64.54 | 3.09 | 16.99 | 4.36 | 2.61 | 1.77 | 3.13 | 1.60 | 6.90 | 5.88 | 8.54 | 1.13 | 6.97 | -0.27 | 19.41 | 3.53 |
| 2011 3 | 64.75 | 2.73 | 16.58 | 3.83 | 2.78 | 3.51 | 3.32 | 5.84 | 6.57 | 4.94 | 8.14 | 0.50 | 7.36 | -1.56 | 19.99 | 3.12 |
| 2011 4 | 66.86 | 1.09 | 18.20 | 0.27 | 2.92 | 3.57 | 3.42 | 3.92 | 6.02 | -0.89 | 8.92 | -0.16 | 6.86 | 1.12 | 20.53 | 2.31 |
| 2012 1 | 67.13 | 0.88 | 16.83 | 0.33 | 2.88 | 2.31 | 3.13 | 5.15 | 6.38 | 2.55 | 8.28 | -1.94 | 8.77 | 2.37 | 20.86 | 0.68 |
| 2012 2 | 65.21 | 1.54 | 16.82 | 1.04 | 2.70 | 1.11 | 3.11 | 4.53 | 6.92 | 0.51 | 8.66 | 2.33 | 7.13 | 1.41 | 19.86 | 1.57 |
| 2012 3 | 63.74 | 1.01 | 15.98 | 0.61 | 2.92 | 1.87 | 3.21 | 1.90 | 6.37 | -0.97 | 8.18 | 2.88 | 7.11 | -1.38 | 19.97 | 1.81 |
| 2012 4 | 66.29 | 1.65 | 17.89 | 2.34 | 2.97 | 1.99 | 3.27 | 0.96 | 6.04 | 2.53 | 9.08 | 3.86 | 6.66 | 0.50 | 20.39 | 0.39 |
| 2013 1 | 66.65 | 2.02 | 16.94 | 1.68 | 2.82 | 6.15 | 3.05 | 2.64 | 6.27 | 0.94 | 8.41 | 4.34 | 8.43 | -0.08 | 20.72 | 1.83 |
| 2013 2 | 64.17 | 1.92 | 16.72 | 0.46 | 2.58 | 7.94 | 3.04 | 4.31 | 6.94 | 4.82 | 8.61 | 3.28 | 6.81 | -0.01 | 19.46 | 1.07 |
| 2013 3 | 62.99 | 1.70 | 16.10 | 0.53 | 2.84 | 7.10 | 3.08 | 2.66 | 6.35 | 3.75 | 8.06 | 1.57 | 6.65 | -1.43 | 19.91 | 2.16 |
| 2013 4 | 65.64 | 3.46 | 18.11 | 3.56 | 2.90 | 9.32 | 3.15 | 3.99 | 6.10 | 6.48 | 8.90 | 2.68 | 6.20 | -1.07 | 20.28 | 3.51 |
| 2014 1 | 65.64 | 2.76 | 16.47 | 3.25 | 2.82 | 1.72 | 2.98 | 2.81 | 6.43 | 7.22 | 8.26 | 2.10 | 8.14 | -0.45 | 20.55 | 2.47 |
| 2014 2 | 62.80 | 3.24 | 16.30 | 5.38 | 2.51 | 2.24 | 2.92 | 2.50 | 7.12 | 7.51 | 8.31 | 1.45 | 6.42 | -0.96 | 19.22 | 2.55 |
| 2014 3 | 62.10 | 3.47 | 15.62 | 4.30 | 2.83 | -0.08 | 2.91 | 0.99 | 6.82 | 12.27 | 7.84 | 2.06 | 6.36 | -0.18 | 19.72 | 2.85 |
| 2014 4 | 64.08 | 2.24 | 17.49 | 2.85 | 3.16 | -1.37 | 2.99 | 2.15 | 5.96 | 3.05 | 8.63 | 2.10 | 5.92 | 0.20 | 19.92 | 2.55 |
| 2015 1 | 63.25 | 1.06 | 15.59 | 0.79 | 3.45 | 2.47 | 2.76 | 1.05 | 6.23 | 3.46 | 7.89 | 1.34 | 7.58 | 0.45 | 19.73 | 0.45 |
| 2015 2 | 62.00 | 0.52 | 15.71 | -1.29 | 3.01 | 1.96 | 2.77 | 2.08 | 7.23 | 5.18 | 8.20 | 0.86 | 6.18 | 1.17 | 18.90 | -0.49 |
| 2015 3 | 61.58 | -0.47 | 15.13 | -2.62 | 3.30 | -1.01 | 2.82 | 3.44 | 6.63 | -0.88 | 7.79 | 0.42 | 6.22 | 1.34 | 19.69 | -0.29 |
| 2015 4 | 64.35 | 0.80 | 17.24 | -1.23 | 3.46 | 0.48 | 2.91 | 4.10 | 6.26 | 6.76 | 8.66 | 0.90 | 5.72 | -0.94 | 20.11 | 0.87 |
| 2016 1r | 63.95 | 0.51 | 15.31 | -1.83 | 3.50 | -1.78 | 2.71 | 3.30 | 6.41 | 3.24 | 7.95 | 0.58 | 7.64 | -0.12 | 20.43 | 1.75 |
| 2016 2p | 62.16 | 0.75 | 15.40 | -0.77 | 3.07 | 2.39 | 2.70 | 2.58 | 7.22 | 1.34 | 8.29 | 1.43 | 6.20 | -0.16 | 19.28 | 1.32 |

資料來源：行政院主計總處，「國民所得統計及國內經濟情勢展望」，2016年8月19日。

- 註：1. 其他包含住宿及餐飲業、專業、科學及技術服務業、支援服務業、教育服務業、醫療保健及社會工作服務業、藝術、娛樂及休閒服務業、其他服務業、進口稅及加值型營業稅。
2. 2014年第2季(含)以前歷年各季資料均已依5年修正結果追溯修正。
3. 2014年11月起主計總處由定基法改以連鎖法衡量經濟成長率。
4. 2016年第1季為主計總處發布之概估數字。

Source : Directorate General of Budget, Accounting and Statistics, Executive Yuan, R.O.C..

表三：生產概況
Table3.IndustryIndicators



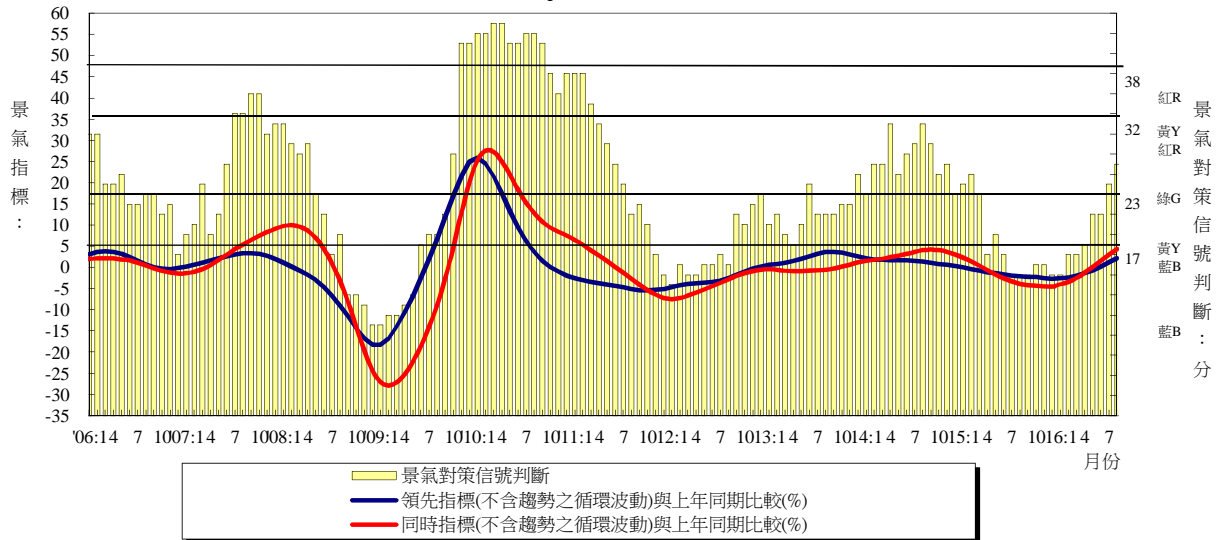
| 年與月 Year & Month | 製造業生產 (基期100年=100) Mfg.IndustrialProduction n (2011=100) | | 製造業重工業生產 (基期100年=100) HeavyIndustryProductio n (2011=100) | | 製造業輕工業生產 (基期100年=100) LightIndustryProduction (2011=100) | | 製造業單位產出勞動成本 (基期100年=100) UnitlaborcostinManufacturing (2011=100) | | 製造業薪資 AverageEarningsofEmployees in Manufacturing | |
|---------------------------|--|--|---|--|---|--|---|--|--|--------------------------------------|
| | 指數 Index (%) | 年增率 AnnualRate of Change (%) | 指數 Index (%) | 年增率 AnnualRate of Change (%) | 指數 Index (%) | 年增率 AnnualRate of Change (%) | 指數 Index (%) | 年增率 Annual Rateof Change (%) | 每人每月 (元) WagesperMon th (NT\$) | 年增率 AnnualRateof Change (%) |
| 2000 | 59.20 | 7.85 | - | - | - | - | 144.75 | -2.37 | 38,914 | 3.12 |
| 2001 | 53.86 | -9.02 | - | - | - | - | 149.85 | 3.52 | 38,412 | -1.29 |
| 2002 | 58.67 | 8.93 | - | - | - | - | 135.84 | -9.35 | 38,435 | 0.06 |
| 2003 | 64.27 | 9.54 | - | - | - | - | 130.53 | -3.91 | 39,549 | 2.90 |
| 2004 | 70.68 | 9.97 | - | - | - | - | 126.56 | -3.04 | 40,657 | 2.80 |
| 2005 | 72.94 | 3.20 | - | - | - | - | 127.30 | 0.58 | 41,858 | 2.95 |
| 2006 | 76.30 | 4.61 | - | - | - | - | 124.89 | -1.89 | 42,393 | 1.28 |
| 2007 | 82.66 | 8.34 | 79.17 | 10.39 | 101.84 | -0.49 | 118.64 | -5.00 | 43,178 | 1.85 |
| 2008 | 81.92 | -0.90 | 79.14 | -0.04 | 96.83 | -4.92 | 120.42 | 1.50 | 43,121 | -0.13 |
| 2009 | 75.53 | -7.80 | 72.92 | -7.86 | 89.57 | -7.50 | 111.31 | -7.57 | 39,125 | -9.27 |
| 2010 | 95.52 | 26.47 | 94.76 | 29.95 | 99.60 | 11.20 | 98.84 | -11.20 | 42,300 | 8.12 |
| 2011 | 100.00 | 4.69 | 100.00 | 5.53 | 100.00 | 0.40 | 100.00 | 1.17 | 43,316 | 2.40 |
| 2012 | 99.68 | -0.32 | 99.70 | -0.30 | 99.57 | -0.43 | 102.25 | 2.25 | 43,689 | 0.86 |
| 2013 | 100.24 | 0.56 | 100.52 | 0.82 | 98.71 | -0.86 | 102.53 | 0.27 | 43,829 | 0.32 |
| 2014 | 106.89 | 6.63 | 108.14 | 7.58 | 100.19 | 1.50 | 101.09 | -1.40 | 45,207 | 3.14 |
| 2015 | 105.30 | -1.49 | 106.54 | -1.48 | 98.63 | -1.56 | 107.38 | 6.22 | 46,781 | 3.48 |
| 2015 1 | 109.02 | 8.17 | 109.96 | 9.46 | 103.99 | 1.40 | 110.17 | -42.58 | 49,705 | -39.31 |
| 2015 2 | 90.49 | 2.31 | 92.84 | 3.10 | 77.86 | -2.50 | 223.43 | 106.84 | 84,071 | 108.06 |
| 2015 3 | 113.22 | 7.33 | 114.85 | 7.98 | 104.43 | 3.58 | 86.26 | -2.09 | 40,444 | 2.99 |
| 2015 4 | 107.52 | 1.27 | 108.71 | 1.55 | 101.09 | -0.38 | 91.79 | 3.52 | 40,928 | 3.17 |
| 2015 5 | 107.28 | -2.76 | 109.14 | -2.42 | 97.27 | -4.70 | 94.35 | 2.35 | 41,918 | -1.93 |
| 2015 6 | 107.07 | -0.89 | 108.58 | -1.12 | 98.97 | 0.55 | 95.83 | 7.54 | 42,468 | 5.16 |
| 2015 7 | 109.34 | -2.77 | 110.60 | -2.71 | 102.58 | -3.14 | 109.45 | 11.21 | 49,334 | 7.18 |
| 2015 8 | 103.83 | -5.93 | 105.20 | -5.88 | 96.47 | -6.18 | 102.39 | 5.33 | 43,858 | -1.54 |
| 2015 9 | 102.51 | -5.81 | 103.67 | -6.47 | 96.27 | -1.79 | 101.70 | 9.31 | 43,117 | 2.52 |
| 2015 10 | 105.02 | -6.50 | 105.83 | -7.01 | 100.70 | -3.51 | 93.72 | 6.96 | 40,680 | -0.43 |
| 2015 11 | 102.31 | -4.84 | 102.99 | -5.76 | 98.63 | 0.77 | 97.30 | 4.28 | 41,146 | -1.04 |
| 2015 12 | 106.02 | -5.29 | 106.14 | -5.78 | 105.35 | -2.54 | 100.15 | 6.99 | 43,879 | 1.05 |
| 2016 1 | 101.86 | -5.99 | 102.31 | -6.96 | 99.38 | -4.43 | 177.44 | 61.06 | 74,735 | 50.36 |
| 2016 2 | 85.85 | -4.15 | 88.14 | -5.06 | 73.53 | -5.56 | 159.10 | -28.79 | 56,609 | -32.67 |
| 2016 3 | 109.22 | -2.92 | 110.32 | -3.94 | 103.28 | -1.10 | 90.24 | 4.61 | 40,798 | 0.88 |
| 2016 4 | 103.26 | -3.57 | 104.74 | -3.65 | 95.28 | -5.75 | 95.18 | 3.69 | 40,694 | -0.57 |
| 2016 5 | 109.26 | 1.90 | 110.74 | 1.47 | 101.27 | 4.11 | 95.42 | 1.13 | 43,107 | 2.84 |
| 2016 6 | 109.02 | 1.14 | 111.03 | 2.26 | 98.20 | -0.78 | 95.15 | -0.71 | 42,883 | 0.98 |
| 2016 7 | 110.00 | -0.36 | 112.22 | 1.46 | 98.08 | -4.39 | 105.78 | -3.35 | 47,934 | -2.84 |
| 2016 8 | 112.50 | 7.74 | 113.95 | 8.32 | 104.70 | 8.53 | - | - | - | - |
| 1-當月 | 105.12 | -0.80 | 106.68 | -0.75 | 96.72 | -1.14 | 115.11 | 1.69 | 49,538 | -0.56 |

資料來源：經濟部統計處，「105年8月工業生產統計」；行政院主計總處，「105年7月薪資與生產力統計結果」。

Source : Department of Statistics, MOEA, "Industrial Production Indexes in August 2016";

DGBAS, "Earnings and Productivity Statistics in July 2016".

表四：景氣概況
Table 4. Cyclical Indicators



| 年與月 | 景氣指標 | | | | 景氣對策信號判斷 (分) | | | 失業率 (%) |
|---------|----------|-----------------|----------|-----------------|--------------|----|----|---------|
| | 領先指標綜合指數 | 領先指標循環波動 (不含趨勢) | 同時指標綜合指數 | 同時指標循環波動 (不含趨勢) | | | | |
| 2000平均 | 62.06 | 105.02 | 63.32 | 107.14 | 綠 | G | 26 | 2.99 |
| 2001平均 | 54.95 | 91.76 | 57.31 | 95.72 | 藍 | B | 10 | 4.57 |
| 2002平均 | 61.88 | 100.12 | 60.88 | 98.48 | 綠 | G | 23 | 5.17 |
| 2003平均 | 65.29 | 99.16 | 64.97 | 98.70 | 綠 | G | 23 | 4.99 |
| 2004平均 | 72.80 | 102.76 | 72.37 | 102.14 | 黃紅 | YR | 33 | 4.44 |
| 2005平均 | 74.91 | 99.02 | 75.55 | 99.88 | 黃藍 | YB | 22 | 4.13 |
| 2006平均 | 80.10 | 100.76 | 80.03 | 100.68 | 黃藍 | YB | 22 | 3.91 |
| 2007平均 | 84.27 | 102.95 | 85.38 | 104.30 | 綠 | G | 25 | 3.91 |
| 2008平均 | 78.80 | 95.57 | 84.36 | 102.31 | 黃藍 | YB | 19 | 4.14 |
| 2009平均 | 81.14 | 95.87 | 75.49 | 89.19 | 黃藍 | YB | 19 | 5.85 |
| 2010平均 | 94.95 | 104.78 | 94.51 | 104.23 | 黃紅 | YR | 37 | 5.21 |
| 2011平均 | 97.03 | 100.24 | 100.23 | 103.57 | 綠 | G | 24 | 4.39 |
| 2012平均 | 98.19 | 97.53 | 100.00 | 99.33 | 黃藍 | YB | 17 | 4.24 |
| 2013平均 | 102.96 | 99.81 | 102.11 | 98.99 | 黃藍 | YB | 20 | 4.18 |
| 2014平均 | 106.17 | 101.18 | 107.01 | 101.97 | 綠 | G | 25 | 3.96 |
| 2015平均 | 105.11 | 99.57 | 105.33 | 99.78 | 黃藍 | YB | 17 | 3.78 |
| 2015 1 | 106.44 | 100.91 | 108.07 | 102.46 | 綠 | G | 23 | 3.71 |
| 2015 2 | 106.23 | 100.67 | 107.59 | 101.97 | 綠 | G | 24 | 3.69 |
| 2015 3 | 105.95 | 100.38 | 106.96 | 101.34 | 黃藍 | YB | 22 | 3.72 |
| 2015 4 | 105.64 | 100.07 | 106.26 | 100.66 | 藍 | B | 16 | 3.63 |
| 2015 5 | 105.37 | 99.80 | 105.60 | 100.02 | 黃藍 | YB | 18 | 3.62 |
| 2015 6 | 105.10 | 99.54 | 105.04 | 99.48 | 藍 | B | 16 | 3.71 |
| 2015 7 | 104.87 | 99.31 | 104.60 | 99.06 | 藍 | B | 14 | 3.82 |
| 2015 8 | 104.71 | 99.16 | 104.29 | 98.76 | 藍 | B | 14 | 3.90 |
| 2015 9 | 104.59 | 99.05 | 104.11 | 98.60 | 藍 | B | 14 | 3.89 |
| 2015 10 | 104.41 | 98.88 | 104.02 | 98.52 | 藍 | B | 15 | 3.90 |
| 2015 11 | 104.16 | 98.65 | 103.85 | 98.35 | 藍 | B | 15 | 3.91 |
| 2015 12 | 103.88 | 98.39 | 103.60 | 98.12 | 藍 | B | 14 | 3.87 |
| 2016 1 | 103.62 | 98.15 | 103.37 | 97.91 | 藍 | B | 14 | 3.87 |
| 2016 2 | 103.48 | 98.02 | 103.32 | 97.87 | 藍 | B | 16 | 3.95 |
| 2016 3 | 103.59 | 98.13 | 103.59 | 98.12 | 藍 | B | 16 | 3.89 |
| 2016 4 | 103.86 | 98.39 | 104.21 | 98.71 | 黃藍 | YB | 17 | 3.86 |
| 2016 5 | 104.39 | 98.88 | 105.09 | 99.55 | 黃藍 | YB | 20 | 3.84 |
| 2016 6 | 105.09 | 99.55 | 106.17 | 100.57 | 黃藍 | YB | 20 | 3.92 |
| 2016 7 | 105.92 | 100.34 | 107.37 | 101.71 | 綠 | G | 23 | 4.02 |
| 2016 8 | 106.78 | 101.16 | 108.58 | 102.86 | 綠 | G | 25 | 4.08 |

資料來源：國家發展委員會，「105年6月份景氣概況」；主計總處。

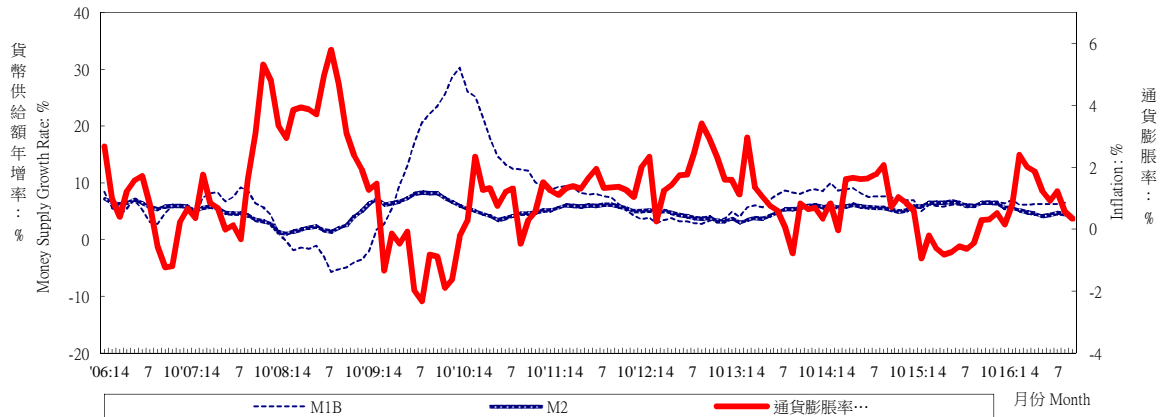
Source : National Development Council, "Taiwan Business Indicators in June 2016"; DGBAS.

表五：物價與金融概況

Table 5. Prices and Financial Situation

貨幣供給額與通貨膨脹率

Money Supply Growth Rate and Inflation



| 年與月 Year & Month | 躉售物價 (基期100年=100) Wholesale Prices (2011=100) | | 消費者物價 (基期100年=100) Consumer Prices (2011=100) | | 貨幣供給額年增率 Money Supply (Annual Growth Rate) | | |
|---------------------|--|--|--|--|--|-----------------|----------------|
| | 指數 Index (%) | 年增率 Annual Rate of Change (%) | 指數 Index (%) | 年增率 Annual Rate of Change (%) | M1A(日平均) (%) | M1B(日平均) (%) | M2(日平均) (%) |
| 2000 | 77.32 | 1.82 | 89.82 | 1.25 | 7.36 | 10.58 | 7.04 |
| 2001 | 76.28 | -1.35 | 89.82 | 0.00 | -4.69 | -1.02 | 5.72 |
| 2002 | 76.32 | 0.05 | 89.64 | -0.20 | 8.59 | 17.01 | 3.46 |
| 2003 | 78.21 | 2.48 | 89.39 | -0.28 | 11.28 | 11.82 | 3.68 |
| 2004 | 83.71 | 7.03 | 90.83 | 1.61 | 21.10 | 18.98 | 7.27 |
| 2005 | 84.22 | 0.61 | 92.92 | 2.30 | 7.65 | 7.10 | 6.20 |
| 2006 | 88.96 | 5.63 | 93.48 | 0.60 | 5.72 | 5.30 | 6.18 |
| 2007 | 94.72 | 6.47 | 95.16 | 1.80 | 6.80 | 6.44 | 4.16 |
| 2008 | 99.59 | 5.14 | 98.51 | 3.52 | 0.97 | -2.94 | 2.71 |
| 2009 | 90.90 | -8.73 | 97.66 | -0.86 | 13.37 | 16.54 | 7.45 |
| 2010 | 95.86 | 5.46 | 98.60 | 0.96 | 14.51 | 14.93 | 4.53 |
| 2011 | 100.00 | 4.32 | 100.00 | 1.42 | 8.08 | 7.16 | 5.83 |
| 2012 | 98.84 | -1.16 | 101.93 | 1.93 | 3.55 | 3.45 | 4.17 |
| 2013 | 96.44 | -2.43 | 102.74 | 0.79 | 9.15 | 7.27 | 4.78 |
| 2014 | 95.95 | -0.51 | 103.97 | 1.20 | 9.25 | 7.96 | 5.66 |
| 2015 | 87.43 | -8.87 | 103.65 | -0.31 | 6.53 | 6.10 | 6.34 |
| 2015 1 | 89.41 | -7.87 | 102.29 | -0.94 | 4.61 | 5.03 | 5.86 |
| 2015 2 | 88.91 | -8.82 | 102.65 | -0.20 | 7.09 | 6.12 | 6.51 |
| 2015 3 | 88.81 | -8.82 | 102.41 | -0.62 | 6.23 | 5.87 | 6.57 |
| 2015 4 | 87.96 | -9.12 | 102.89 | -0.82 | 5.97 | 5.85 | 6.53 |
| 2015 5 | 87.52 | -9.67 | 103.14 | -0.73 | 5.94 | 6.18 | 6.81 |
| 2015 6 | 87.79 | -9.46 | 103.84 | -0.56 | 6.81 | 6.09 | 6.53 |
| 2015 7 | 86.97 | -10.23 | 103.74 | -0.63 | 6.34 | 5.66 | 6.06 |
| 2015 8 | 87.36 | -9.46 | 104.39 | -0.44 | 6.73 | 5.86 | 6.01 |
| 2015 9 | 87.33 | -8.71 | 105.11 | 0.30 | 7.52 | 6.62 | 6.50 |
| 2015 10 | 86.29 | -8.67 | 105.20 | 0.31 | 6.54 | 6.75 | 6.58 |
| 2015 11 | 85.53 | -7.97 | 104.47 | 0.53 | 6.95 | 6.73 | 6.39 |
| 2015 12 | 84.99 | -7.30 | 103.70 | 0.14 | 7.59 | 6.37 | 5.68 |
| 2016 1 | 84.81 | -5.14 | 103.12 | 0.81 | 8.91 | 6.92 | 5.63 |
| 2016 2 | 84.55 | -4.90 | 105.12 | 2.41 | 6.84 | 6.11 | 5.17 |
| 2016 3 | 84.44 | -4.92 | 104.47 | 2.01 | 7.58 | 6.16 | 4.81 |
| 2016 4 | 84.26 | -4.21 | 104.81 | 1.87 | 7.75 | 6.30 | 4.65 |
| 2016 5 | 85.07 | -2.80 | 104.41 | 1.23 | 8.93 | 6.30 | 4.14 |
| 2016 6 | 85.33 | -2.80 | 104.78 | 0.91 | 7.77 | 6.23 | 4.42 |
| 2016 7 | 84.81 | -2.48 | 105.02 | 1.23 | 7.05 | 6.24 | 4.70 |
| 2016 8 | 83.85 | -4.02 | 104.99 | 0.57 | 6.21 | 6.48 | 4.51 |
| 2016 9 | 83.88 | -3.95 | 105.46 | 0.33 | -- | -- | -- |
| 1-當月 | 84.56 | -3.92 | 104.69 | 1.26 | 7.63 | 6.34 | 4.75 |

資料來源：主計總處，「105年9月份物價變動概況」；中央銀行，「金融統計月報」。

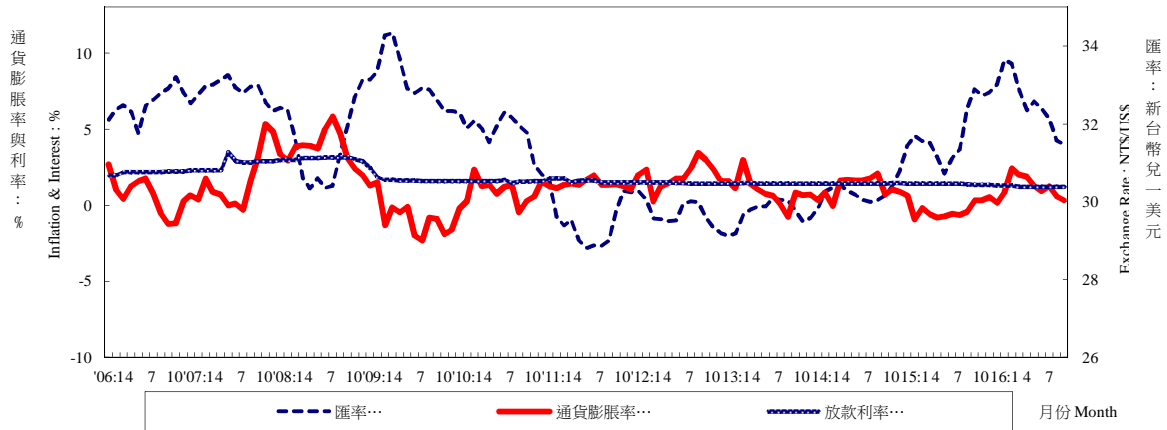
Source : Directorate General of Budget, Accounting and Statistics, Executive Yuan, R.O.C., "The Price Indices for Sep. 2016"; Central Bank of Republic of China (Taiwan), "Financial Statistics Monthly, Republic of China (Taiwan)".

表五：物價與金融概況

Table 5. Prices and Financial Situation

利率、通貨膨脹率與匯率

Interest Rate, Exchange Rate and Inflation



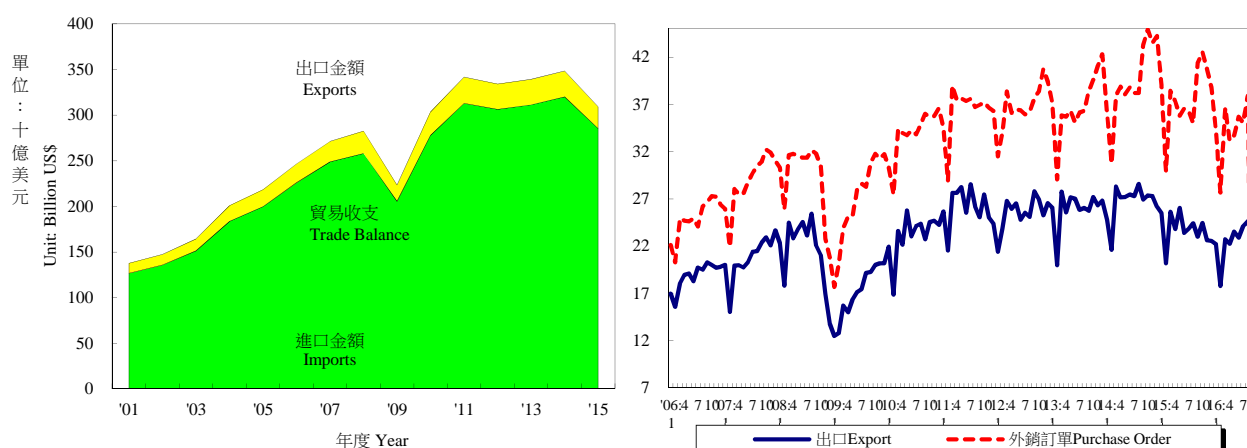
| 年與月 Year & Month | 一個月期存款牌告利率 1-Month Deposits Rates (%) | 基本放款利率 (1 Year, Max) Interest Rate (%) | 商業本票 初級市場 180天利率 Commercial Paper Primary Mkt.(180d) Interest Rate (%) | 股價指數(平均) Stock Indexes | | 匯率(平均) Exchange Rate | |
|---------------------|--|---|---|---------------------------|----------------------------------|----------------------------------|---------------------------------|
| | | | | 指數 Index (%) | 年增率 Annual Rate of Change (%) | 新臺幣 兌一美元 NT\$ Against US\$ | 新臺幣 兌一日元 NT\$ Against Yen |
| 2000 | 4.62 | 7.86 | 5.62 | 7,847 | 5.66 | 31.23 | 0.2898 |
| 2001 | 4.09 | 7.78 | 4.17 | 4,907 | -37.46 | 33.80 | 0.2781 |
| 2002 | 1.83 | 7.46 | 2.75 | 5,226 | 6.50 | 34.58 | 0.2757 |
| 2003 | 1.11 | 7.10 | 1.80 | 5,162 | 0.54 | 34.42 | 0.2969 |
| 2004 | 1.08 | 7.07 | 1.61 | 6,034 | 30.57 | 33.42 | 0.3089 |
| 2005 | 1.34 | 7.32 | 2.00 | 6,092 | 0.96 | 32.17 | 0.2918 |
| 2006 | 1.61 | 7.53 | 2.19 | 6,842 | 12.31 | 32.53 | 0.2797 |
| 2007 | 1.90 | 7.93 | 2.74 | 8,510 | 24.38 | 32.84 | 0.2789 |
| 2008 | 1.98 | 8.15 | 3.03 | 7,024 | -17.46 | 31.52 | 0.3049 |
| 2009 | 0.39 | 6.51 | 1.65 | 6,460 | -8.03 | 33.05 | 0.3532 |
| 2010 | 0.56 | 6.21 | 1.60 | 7,950 | 23.07 | 31.64 | 0.3605 |
| 2011 | 0.83 | 6.36 | 1.59 | 8,156 | 2.59 | 29.46 | 0.3692 |
| 2012 | 0.88 | 6.49 | 1.47 | 7,481 | -8.28 | 29.61 | 0.3711 |
| 2013 | 0.88 | 6.45 | 1.45 | 8,093 | 8.18 | 29.77 | 0.3050 |
| 2014 | 0.88 | 6.45 | 1.45 | 8,992 | 11.11 | 30.37 | 0.2866 |
| 2015 | 0.85 | 6.45 | 1.40 | 8,959 | -0.36 | 31.90 | 0.2636 |
| 2015 1 | 0.88 | 6.45 | 1.45 | 9,282 | 8.35 | 31.69 | 0.2678 |
| 2015 2 | 0.88 | 6.45 | 1.45 | 9,506 | 11.88 | 31.57 | 0.2662 |
| 2015 3 | 0.88 | 6.45 | 1.45 | 9,611 | 10.63 | 31.53 | 0.2619 |
| 2015 4 | 0.88 | 6.45 | 1.45 | 9,680 | 8.76 | 31.13 | 0.2604 |
| 2015 5 | 0.88 | 6.45 | 1.45 | 9,689 | 8.43 | 30.72 | 0.2545 |
| 2015 6 | 0.88 | 6.45 | 1.45 | 9,355 | 1.36 | 31.11 | 0.2514 |
| 2015 7 | 0.88 | 6.45 | 1.45 | 8,964 | -5.39 | 31.34 | 0.2543 |
| 2015 8 | 0.88 | 6.45 | 1.40 | 8,156 | -11.98 | 32.39 | 0.2628 |
| 2015 9 | 0.81 | 6.45 | 1.35 | 8,206 | -11.09 | 32.89 | 0.2734 |
| 2015 10 | 0.81 | 6.42 | 1.34 | 8,551 | -3.04 | 32.73 | 0.2726 |
| 2015 11 | 0.81 | 6.42 | 1.33 | 8,503 | -5.69 | 32.80 | 0.2677 |
| 2015 12 | 0.74 | 6.42 | 1.29 | 8,298 | -8.90 | 33.01 | 0.2707 |
| 2016 1 | 0.74 | 6.35 | 1.29 | 7,871 | -15.20 | 33.64 | 0.2844 |
| 2016 2 | 0.74 | 6.35 | 1.29 | 8,247 | -13.25 | 33.55 | 0.2915 |
| 2016 3 | 0.67 | 6.35 | 1.26 | 8,688 | -9.61 | 32.85 | 0.2906 |
| 2016 4 | 0.67 | 6.35 | 1.26 | 8,568 | -11.49 | 32.35 | 0.2942 |
| 2016 5 | 0.67 | 6.35 | 1.25 | 8,235 | -15.00 | 32.57 | 0.2987 |
| 2016 6 | 0.67 | 6.35 | 1.25 | 8,595 | -8.12 | 32.40 | 0.3071 |
| 2016 7 | 0.60 | 6.26 | 1.23 | 8,900 | -0.72 | 32.12 | 0.3090 |
| 2016 8 | 0.60 | 6.26 | 1.22 | 9,094 | 11.50 | 31.58 | 0.3118 |
| 2016 9 | -- | 6.26 | 1.22 | 9,131 | 11.27 | 31.48 | 0.3085 |
| 2016 1-當月 | 0.67 | 6.32 | 1.26 | 8,592 | -6.21 | 32.51 | 0.2995 |

資料來源：中央銀行，「金融統計月報」；經濟日報；第一銀行；台灣證券交易所。

Source : Central Bank of Republic of China (Taiwan), "Financial Statistics Monthly, Republic of China (Taiwan)"; Economic Daily News; First Bank; Taiwan Stock Exchange Corporation.

表六：臺灣進出口貿易

Table 6. Foreign Trade Values



| 年與月 Year & Month | 海關進出口貿易額 Export & Import Values of Foreign Trade | | | | | 外銷訂單 Purchase Order for Exports | |
|---------------------|---|--|---|--|---------------------------------|---------------------------------------|--|
| | 出口金額 (百萬美元) Amount (Mil. US\$) | 年增率 Annual Rate of Change (%) | 進口金額 (百萬美元) Amount (Mil. US\$) | 年增率 Annual Rate of Change (%) | 貿易收支 (百萬美元) Trade Balance | 金額 (百萬美元) Amount (Mil. US\$) | 年增率 Annual Rate of Change (%) |
| 2001 | 126,612 | - | 109,588 | - | 17,024 | 135,714 | -11.54 |
| 2002 | 135,774 | 7.24 | 115,116 | 5.04 | 20,658 | 150,952 | 11.23 |
| 2003 | 151,345 | 11.47 | 130,249 | 13.15 | 21,096 | 170,028 | 12.64 |
| 2004 | 183,643 | 21.34 | 171,554 | 31.71 | 12,089 | 215,087 | 26.50 |
| 2005 | 199,761 | 8.78 | 185,438 | 8.09 | 14,323 | 256,393 | 19.20 |
| 2006 | 225,904 | 13.09 | 206,442 | 11.33 | 19,462 | 299,313 | 16.74 |
| 2007 | 248,792 | 10.13 | 223,115 | 8.08 | 25,677 | 345,814 | 15.54 |
| 2008 | 258,051 | 3.72 | 244,467 | 9.57 | 13,584 | 351,723 | 1.71 |
| 2009 | 205,663 | -20.30 | 177,598 | -27.35 | 28,065 | 322,440 | -8.33 |
| 2010 | 278,008 | 35.18 | 256,274 | 44.30 | 21,734 | 406,720 | 26.14 |
| 2011 | 312,923 | 12.56 | 288,062 | 12.40 | 24,861 | 436,125 | 7.23 |
| 2012 | 306,409 | -2.08 | 277,324 | -3.73 | 29,085 | 441,007 | 1.12 |
| 2013 | 311,428 | 1.64 | 278,010 | 0.25 | 33,418 | 442,929 | 0.44 |
| 2014 | 320,092 | 2.78 | 281,850 | 1.38 | 38,242 | 472,814 | 6.75 |
| 2015 | 285,344 | -10.86 | 237,219 | -15.84 | 48,125 | 451,814 | -4.44 |
| 2015 1 | 25,491 | 2.87 | 21,108 | -3.39 | 4,383 | 39,038 | 8.11 |
| 2015 2 | 20,171 | -6.61 | 15,684 | -22.68 | 4,487 | 29,890 | -2.66 |
| 2015 3 | 25,643 | -9.40 | 21,938 | -17.58 | 3,705 | 38,427 | 1.28 |
| 2015 4 | 23,802 | -12.34 | 19,296 | -22.13 | 4,506 | 37,318 | -3.99 |
| 2015 5 | 26,024 | -4.25 | 20,733 | -5.78 | 5,291 | 35,793 | -5.85 |
| 2015 6 | 23,385 | -14.82 | 21,452 | -16.24 | 1,933 | 36,582 | -5.76 |
| 2015 7 | 23,833 | -12.69 | 20,544 | -17.69 | 3,289 | 36,287 | -4.96 |
| 2015 8 | 24,412 | -14.60 | 20,836 | -15.13 | 3,576 | 35,026 | -8.33 |
| 2015 9 | 22,979 | -14.67 | 18,054 | -22.91 | 4,925 | 41,345 | -4.54 |
| 2015 10 | 24,450 | -10.67 | 18,715 | -18.79 | 5,736 | 42,548 | -5.26 |
| 2015 11 | 22,605 | -17.16 | 20,458 | -11.45 | 2,147 | 40,755 | -6.33 |
| 2015 12 | 22,549 | -13.79 | 18,402 | -14.93 | 4,147 | 38,805 | -12.26 |
| 2016 1 | 22,192 | -12.94 | 18,676 | -11.52 | 3,515 | 34,186 | -12.43 |
| 2016 2 | 17,755 | -11.98 | 13,617 | -13.18 | 4,138 | 27,669 | -7.43 |
| 2016 3 | 22,721 | -11.40 | 18,220 | -16.95 | 4,501 | 36,625 | -4.69 |
| 2016 4 | 22,244 | -6.54 | 17,445 | -9.59 | 4,799 | 33,159 | -11.15 |
| 2016 5 | 23,539 | -9.55 | 20,035 | -3.37 | 3,504 | 33,729 | -5.77 |
| 2016 6 | 22,868 | -2.21 | 19,301 | -10.03 | 3,567 | 35,704 | -2.40 |
| 2016 7 | 24,096 | 1.10 | 20,516 | -0.14 | 3,580 | 35,035 | -3.45 |
| 2016 8 | 24,658 | 1.01 | 20,673 | -0.78 | 3,985 | 37,927 | 8.28 |
| 2016 9 | 22,560 | -1.82 | 18,186 | 0.73 | 4,374 | -- | -- |
| 1-當月 | 202,633 | -6.08 | 166,670 | -7.22 | 35,963 | 274,034 | -4.97 |

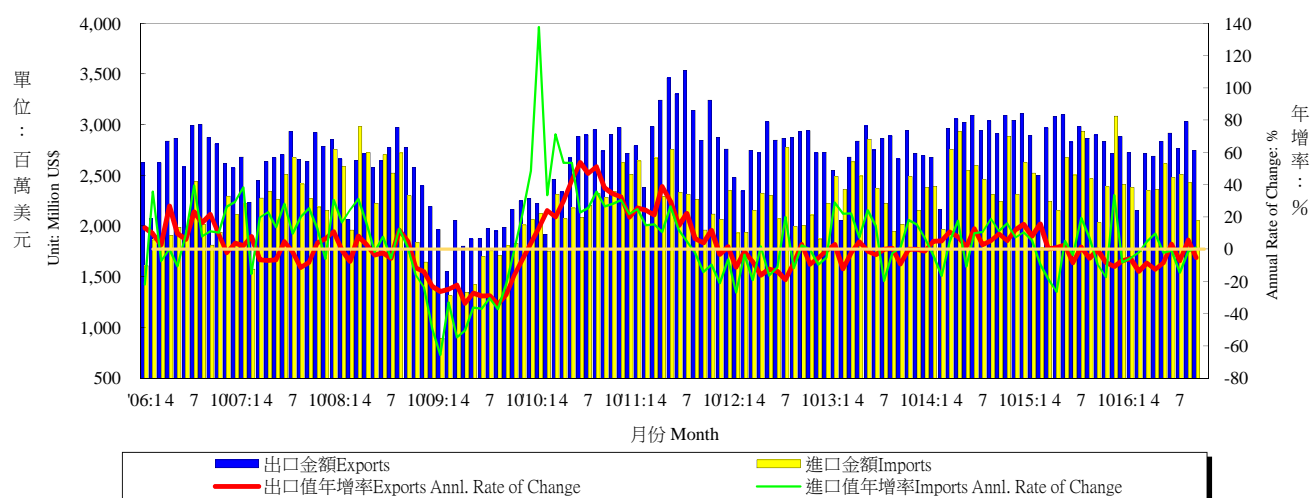
資料來源：財政部統計處，「105年9月海關進出口貿易統計速報」；經濟部統計處，「105年8月外銷訂單統計」。

Source : Department of Statistics, Ministry of Finance, "Summary of Exports and Imports for Sep., 2016";

Department of Statistics, MOEA, "Export Order in Aug. 2016".

表七：臺灣對美國之進出口狀況

Table 7. Trade with the United States



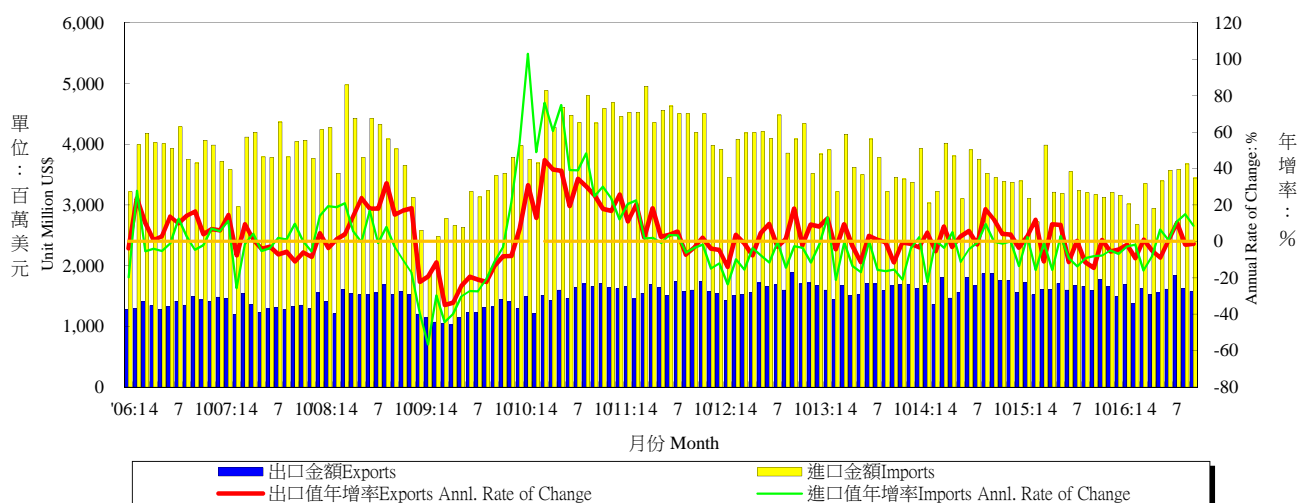
| 年與月 Year & Month | 出口值 Exports | | | 進口值 Imports | | | 出入超 Trade Balance | 貿易總額 Total Trade Amount | | |
|---------------------|---------------------------------------|--|---------------------------|---------------------------------------|--|---------------------------|---------------------------------------|---------------------------------------|--|--------|
| | 金額 (百萬美元) Amount (Mil. US\$) | 年增率 Annual rate of change (%) | 份額 Export share (%) | 金額 (百萬美元) Amount (Mil. US\$) | 年增率 Annual rate of change (%) | 份額 Export share (%) | 金額 (百萬美元) Amount (Mil. US\$) | 金額 (百萬美元) Amount (Mil. US\$) | 年增率 Annual rate of change (%) | |
| 2001 | 28,128 | -- | 22.22 | 19,091 | -- | 17.42 | 9,037 | 47,219 | -- | |
| 2002 | 27,375 | -2.68 | 20.16 | 19,024 | -0.35 | 16.53 | 8,351 | 46,398 | -1.74 | |
| 2003 | 26,577 | -2.91 | 17.56 | 17,795 | -6.46 | 13.66 | 8,783 | 44,372 | -4.37 | |
| 2004 | 28,815 | 8.42 | 15.69 | 22,619 | 27.11 | 13.18 | 6,196 | 51,435 | 15.92 | |
| 2005 | 29,165 | 1.21 | 14.60 | 21,886 | -3.24 | 11.80 | 7,279 | 51,052 | -0.74 | |
| 2006 | 32,475 | 11.35 | 14.38 | 23,839 | 8.92 | 11.55 | 8,635 | 56,314 | 10.31 | |
| 2007 | 32,165 | -0.95 | 12.93 | 27,642 | 15.95 | 12.39 | 4,523 | 59,807 | 6.20 | |
| 2008 | 30,981 | -3.68 | 12.01 | 27,593 | -0.18 | 11.29 | 3,388 | 58,574 | -2.06 | |
| 2009 | 23,707 | -23.48 | 11.53 | 19,201 | -30.41 | 10.81 | 4,506 | 42,908 | -26.75 | |
| 2010 | 31,675 | 33.61 | 11.39 | 26,799 | 39.57 | 10.46 | 4,876 | 58,474 | 36.28 | |
| 2011 | 36,558 | 15.42 | 11.68 | 27,767 | 3.61 | 9.64 | 8,791 | 64,326 | 10.01 | |
| 2012 | 33,224 | -9.12 | 10.84 | 25,701 | -7.44 | 9.27 | 7,523 | 58,925 | -8.40 | |
| 2013 | 32,630 | -1.79 | 10.48 | 28,410 | 10.54 | 10.22 | 4,220 | 61,040 | 3.59 | |
| 2014 | 35,114 | 7.61 | 10.97 | 30,036 | 5.72 | 10.66 | 5,078 | 65,150 | 6.73 | |
| 2015 | 34,543 | -1.63 | 12.11 | 29,196 | -2.80 | 12.31 | 5,347 | 63,739 | -2.17 | |
| 2015 | 5 | 3,096 | 2.38 | 11.90 | 2,674 | 5.02 | 12.90 | 421 | 5,770 | 3.58 |
| | 6 | 2,830 | -8.51 | 12.10 | 2,502 | -3.72 | 11.70 | 328 | 5,333 | -6.32 |
| | 7 | 2,979 | 1.27 | 12.50 | 2,937 | 19.37 | 14.30 | 42 | 5,916 | 9.51 |
| | 8 | 2,867 | -5.64 | 11.70 | 2,465 | 6.76 | 11.80 | 402 | 5,332 | -0.29 |
| | 9 | 2,897 | -0.43 | 12.60 | 2,032 | -9.46 | 11.30 | 864 | 4,929 | -4.36 |
| | 10 | 2,834 | -8.31 | 11.60 | 2,387 | -17.33 | 12.80 | 448 | 5,221 | -12.66 |
| | 11 | 2,716 | -10.78 | 12.00 | 3,085 | 33.38 | 15.10 | -370 | 5,801 | 8.29 |
| | 12 | 2,883 | -7.25 | 12.80 | 2,412 | -8.21 | 13.10 | 471 | 5,295 | -7.69 |
| 2016 | 1 | 2,724 | -5.83 | 12.30 | 2,379 | -5.61 | 12.70 | 344 | 5,103 | -5.73 |
| | 2 | 2,154 | -13.85 | 12.10 | 1,745 | -2.19 | 12.80 | 409 | 3,899 | -8.99 |
| | 3 | 2,713 | -8.55 | 11.90 | 2,348 | 4.61 | 12.90 | 366 | 5,061 | -2.88 |
| | 4 | 2,690 | -12.70 | 12.10 | 2,360 | 9.68 | 13.50 | 329 | 5,050 | -3.50 |
| | 5 | 2,831 | -8.54 | 12.00 | 2,614 | -2.25 | 13.00 | 217 | 5,446 | -5.62 |
| | 6 | 2,917 | 3.08 | 12.80 | 2,479 | -0.94 | 12.80 | 438 | 5,396 | 1.20 |
| | 7 | 2,761 | -7.31 | 11.50 | 2,509 | -14.59 | 12.20 | 253 | 5,270 | -10.93 |
| | 8 | 3,031 | 5.72 | 12.30 | 2,427 | -1.57 | 11.70 | 604 | 5,457 | 2.35 |
| | 9 | 2,746 | -5.20 | 12.20 | 2,051 | 0.93 | 11.30 | 695 | 4,797 | -2.68 |
| | 1-當月 | 24,568 | -5.90 | 12.10 | 20,912 | -1.88 | 12.50 | 3,656 | 45,480 | -4.10 |

資料來源：財政部統計處，「105年9月海關進出口貿易統計速報」。

Source : Department of Statistics, Ministry of Finance, "Summary of Exports and Imports for Sep., 2016".

表八：臺灣對日本之進出口狀況

Table 8. Trade with Japan



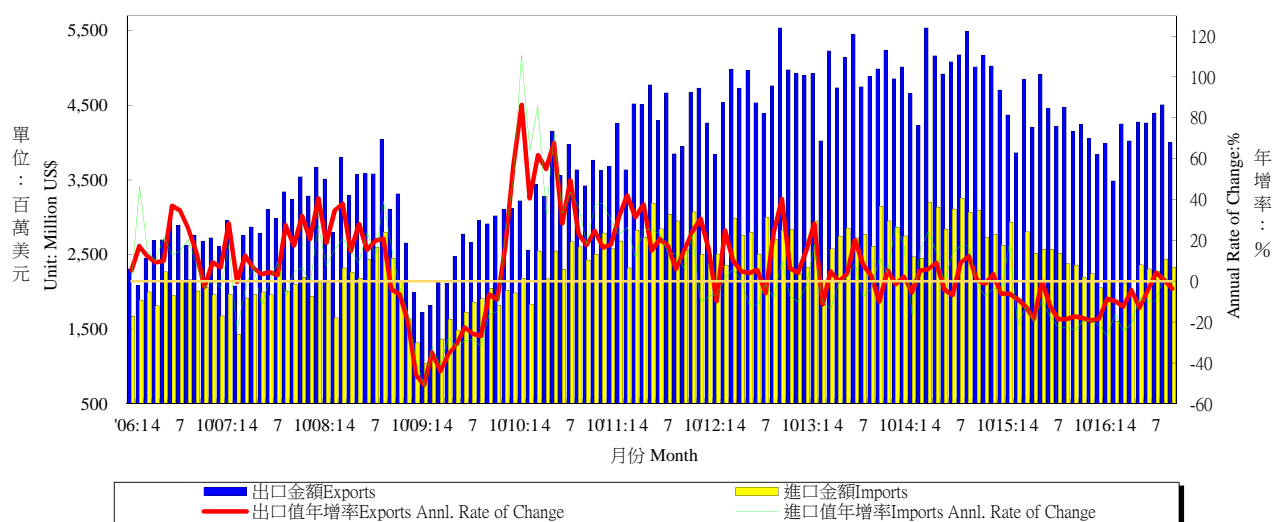
| 年與月 Year & Month | 出口值 Exports | | | 進口值 Imports | | | 出入超 Trade Balance | 貿易總額 Total Trade Amount | |
|---------------------|---------------------------------------|-------------------------------------|---------------------------|---------------------------------------|-------------------------------------|---------------------------|---------------------------------------|---------------------------------------|-------------------------------------|
| | 金額 (百萬美元) Amount (Mil. US\$) | 年增率 Annual rate of change (%) | 份額 Export share (%) | 金額 (百萬美元) Amount (Mil. US\$) | 年增率 Annual rate of change (%) | 份額 Export share (%) | 金額 (百萬美元) Amount (Mil. US\$) | 金額 (百萬美元) Amount (Mil. US\$) | 年增率 Annual rate of change (%) |
| 2001 | 13,033 | -- | 10.29 | 26,105 | -- | 23.82 | -13,072 | 39,138 | -- |
| 2002 | 12,395 | -4.89 | 9.13 | 27,610 | 5.76 | 23.98 | -15,215 | 40,005 | 2.22 |
| 2003 | 12,479 | 0.68 | 8.25 | 33,102 | 19.89 | 25.41 | -20,623 | 45,581 | 13.94 |
| 2004 | 13,953 | 11.81 | 7.60 | 44,324 | 33.90 | 25.84 | -30,370 | 58,277 | 27.85 |
| 2005 | 15,249 | 9.28 | 7.63 | 46,685 | 5.33 | 25.18 | -31,436 | 61,934 | 6.27 |
| 2006 | 16,509 | 8.26 | 7.31 | 46,849 | 0.35 | 22.69 | -30,340 | 63,357 | 2.30 |
| 2007 | 16,167 | -2.07 | 6.50 | 46,710 | -0.30 | 20.94 | -30,543 | 62,878 | -0.76 |
| 2008 | 17,857 | 10.45 | 6.92 | 47,088 | 0.81 | 19.26 | -29,231 | 64,944 | 3.29 |
| 2009 | 14,632 | -18.06 | 7.11 | 36,751 | -21.95 | 20.69 | -22,120 | 51,383 | -20.88 |
| 2010 | 18,645 | 27.43 | 6.71 | 52,910 | 43.97 | 20.65 | -34,266 | 71,555 | 39.26 |
| 2011 | 19,242 | 3.20 | 6.15 | 53,149 | 0.45 | 18.45 | -33,906 | 72,391 | 1.17 |
| 2012 | 19,624 | 1.98 | 6.40 | 48,342 | -9.04 | 17.43 | -28,718 | 67,966 | -6.11 |
| 2013 | 19,391 | -1.19 | 6.23 | 43,690 | -9.62 | 15.72 | -24,299 | 63,081 | -7.19 |
| 2014 | 20,142 | 3.87 | 6.29 | 41,984 | -3.90 | 14.90 | -21,842 | 62,127 | -1.51 |
| 2015 | 19,592 | -2.73 | 6.87 | 38,865 | -7.43 | 16.38 | -19,273 | 58,457 | -5.91 |
| 2015 5 | 1,701 | 9.03 | 6.50 | 3,192 | 2.87 | 15.40 | -1,491 | 4,893 | 4.93 |
| 2015 6 | 1,600 | -11.34 | 6.80 | 3,547 | -9.30 | 16.50 | -1,947 | 5,146 | -9.94 |
| 2015 7 | 1,669 | 0.23 | 7.00 | 3,237 | -13.75 | 15.80 | -1,568 | 4,906 | -9.45 |
| 2015 8 | 1,653 | -11.47 | 6.80 | 3,199 | -9.25 | 15.40 | -1,546 | 4,852 | -10.01 |
| 2015 9 | 1,595 | -14.48 | 6.90 | 3,171 | -8.07 | 17.60 | -1,576 | 4,765 | -10.32 |
| 2015 10 | 1,771 | 0.74 | 7.20 | 3,126 | -7.72 | 16.70 | -1,355 | 4,897 | -4.83 |
| 2015 11 | 1,658 | -5.49 | 7.30 | 3,209 | -4.93 | 15.70 | -1,551 | 4,867 | -5.12 |
| 2015 12 | 1,492 | -4.46 | 6.60 | 3,161 | -6.95 | 17.20 | -1,669 | 4,652 | -6.16 |
| 2016 1 | 1,689 | -1.94 | 7.60 | 3,017 | -2.92 | 16.20 | -1,327 | 4,706 | -2.57 |
| 2016 2 | 1,379 | -9.25 | 7.80 | 2,672 | -1.77 | 19.60 | -1,293 | 4,051 | -4.45 |
| 2016 3 | 1,621 | 0.88 | 7.10 | 3,348 | -16.00 | 18.40 | -1,726 | 4,969 | -11.15 |
| 2016 4 | 1,524 | -5.04 | 6.80 | 2,942 | -8.43 | 16.90 | -1,418 | 4,465 | -7.30 |
| 2016 5 | 1,550 | -8.89 | 6.60 | 3,397 | 6.42 | 17.00 | -1,847 | 4,947 | 1.10 |
| 2016 6 | 1,613 | 0.83 | 7.10 | 3,572 | 0.73 | 18.50 | -1,960 | 5,185 | 0.76 |
| 2016 7 | 1,839 | 10.17 | 7.60 | 3,587 | 10.81 | 17.50 | -1,748 | 5,426 | 10.59 |
| 2016 8 | 1,622 | -1.86 | 6.60 | 3,674 | 14.87 | 17.80 | -2,052 | 5,297 | 9.17 |
| 2016 9 | 1,573 | -1.37 | 7.00 | 3,443 | 8.59 | 18.90 | -1,871 | 5,016 | 5.26 |
| 2016 1-當月 | 14,410 | -1.78 | 7.10 | 29,652 | 0.96 | 17.80 | -15,242 | 44,061 | 0.05 |

資料來源：財政部統計處，「105年9月海關進出口貿易統計速報」。

Source : Department of Statistics, Ministry of Finance, "Summary of Exports and Imports for Sep., 2016".

表九：臺灣對東協之進出口狀況

Table 9. Trade with ASEAN



| 年與月 Year & Month | 出口值 Exports | | | 進口值 Imports | | | 出入超 Trade Balance | 貿易總額 Total Trade Amount | |
|---------------------|---------------------------------------|-------------------------------------|---------------------------|---------------------------------------|-------------------------------------|---------------------------|---------------------------------------|---------------------------------------|-------------------------------------|
| | 金額 (百萬美元) Amount (Mil. US\$) | 年增率 Annual rate of change (%) | 份額 Export share (%) | 金額 (百萬美元) Amount (Mil. US\$) | 年增率 Annual rate of change (%) | 份額 Export share (%) | 金額 (百萬美元) Amount (Mil. US\$) | 金額 (百萬美元) Amount (Mil. US\$) | 年增率 Annual rate of change (%) |
| 2001 | 15,416 | -- | 12.18 | 16,086 | -- | 14.68 | -670 | 31,503 | -- |
| 2002 | 16,533 | 7.24 | 12.18 | 16,706 | 3.85 | 14.51 | -174 | 33,239 | 5.51 |
| 2003 | 18,250 | 10.39 | 12.06 | 17,614 | 5.43 | 13.52 | 636 | 35,864 | 7.90 |
| 2004 | 24,240 | 32.82 | 13.20 | 20,487 | 16.31 | 11.94 | 3,752 | 44,727 | 24.71 |
| 2005 | 27,586 | 13.81 | 13.81 | 21,305 | 3.99 | 11.49 | 6,282 | 48,891 | 9.31 |
| 2006 | 31,494 | 14.17 | 13.94 | 23,599 | 10.77 | 11.43 | 7,896 | 55,093 | 12.69 |
| 2007 | 36,619 | 16.27 | 14.72 | 23,953 | 1.50 | 10.74 | 12,666 | 60,572 | 9.95 |
| 2008 | 39,249 | 7.18 | 15.21 | 25,899 | 8.12 | 10.59 | 13,350 | 65,148 | 7.55 |
| 2009 | 30,814 | -21.49 | 14.98 | 20,004 | -22.76 | 11.26 | 10,810 | 50,818 | -22.00 |
| 2010 | 42,317 | 37.33 | 15.22 | 29,145 | 45.70 | 11.37 | 13,172 | 71,462 | 40.62 |
| 2011 | 52,133 | 23.20 | 16.66 | 33,110 | 13.61 | 11.49 | 19,023 | 85,243 | 19.29 |
| 2012 | 57,088 | 9.50 | 18.63 | 31,854 | -3.79 | 11.49 | 25,234 | 88,942 | 4.34 |
| 2013 | 59,220 | 3.73 | 19.02 | 33,059 | 3.78 | 11.89 | 26,160 | 92,279 | 3.75 |
| 2014 | 60,172 | 1.61 | 18.80 | 34,725 | 5.04 | 12.32 | 25,447 | 94,897 | 2.84 |
| 2015 | 51,639 | -14.18 | 18.10 | 29,039 | -16.38 | 12.24 | 22,601 | 80,678 | -14.98 |
| 2015 5 | 4,913 | 18.90 | -0.14 | 2,571 | -9.22 | 12.40 | 2,341 | 7,484 | -3.45 |
| 2015 6 | 4,461 | 19.10 | -12.20 | 2,568 | -17.37 | 12.00 | 1,894 | 7,029 | -14.17 |
| 2015 7 | 4,214 | 17.70 | -18.59 | 2,517 | -22.52 | 12.30 | 1,697 | 6,732 | -20.11 |
| 2015 8 | 4,472 | 18.30 | -18.55 | 2,377 | -22.51 | 11.40 | 2,095 | 6,849 | -19.97 |
| 2015 9 | 4,152 | 18.10 | -17.17 | 2,356 | -23.84 | 13.00 | 1,796 | 6,507 | -19.72 |
| 2015 10 | 4,240 | 17.30 | -17.96 | 2,192 | -19.81 | 11.70 | 2,048 | 6,433 | -18.60 |
| 2015 11 | 4,053 | 17.90 | -19.35 | 2,245 | -18.97 | 11.00 | 1,808 | 6,298 | -19.22 |
| 2015 12 | 3,843 | 17.00 | -18.33 | 2,055 | -21.72 | 11.20 | 1,788 | 5,899 | -19.54 |
| 2016 1 | 3,992 | -8.69 | 18.00 | 2,153 | -26.54 | 11.50 | 1,839 | 6,145 | -15.86 |
| 2016 2 | 3,487 | -9.74 | 19.60 | 1,604 | -16.09 | 11.80 | 1,883 | 5,091 | -11.84 |
| 2016 3 | 4,249 | -12.34 | 18.70 | 2,117 | -24.50 | 11.60 | 2,131 | 6,366 | -16.80 |
| 2016 4 | 4,022 | -4.43 | 18.10 | 1,985 | -20.94 | 11.40 | 2,037 | 6,007 | -10.60 |
| 2016 5 | 4,276 | -12.96 | 18.20 | 2,363 | -8.09 | 11.80 | 1,913 | 6,639 | -11.29 |
| 2016 6 | 4,264 | -4.43 | 18.60 | 2,308 | -10.11 | 12.00 | 1,956 | 6,572 | -6.50 |
| 2016 7 | 4,393 | 4.25 | 18.20 | 2,279 | -9.47 | 11.10 | 2,114 | 6,673 | -0.88 |
| 2016 8 | 4,509 | 0.82 | 18.30 | 2,436 | 2.48 | 11.80 | 2,073 | 6,944 | 1.40 |
| 2016 9 | 4,003 | -3.58 | 17.70 | 2,324 | -1.35 | 12.80 | 1,679 | 6,327 | -2.77 |
| 2016 1-當月 | 37,194 | -5.84 | 18.40 | 19,570 | -13.20 | 11.70 | 17,625 | 56,764 | -8.52 |

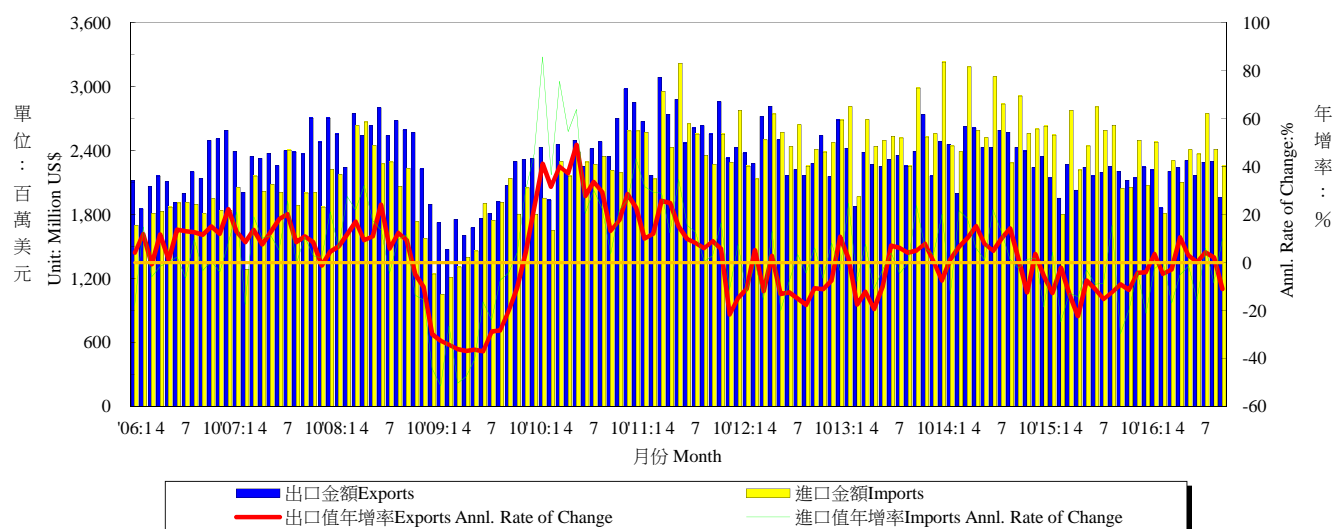
資料來源：財政部統計處，「105年9月海關進出口貿易統計速報」。

Source : Department of Statistics, Ministry of Finance, "Summary of Exports and Imports for Sep., 2016".

說明：東協包括新加坡、馬來西亞、菲律賓、泰國、印尼、越南、汶萊、寮國、緬甸及柬埔寨。

表十：臺灣對歐洲之進出口狀況

Table 10. Trade with Europe

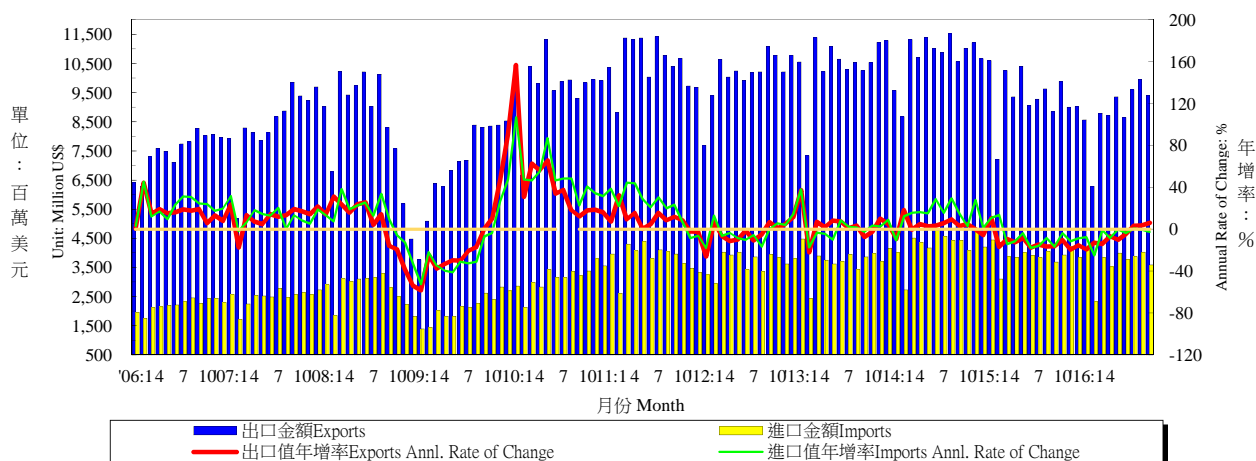


| 年與月 Year & Month | 出口值 Exports | | | 進口值 Imports | | | 出入超 Trade Balance | 貿易總額 Total Trade Amount | | |
|---------------------|---------------------------------------|-------------------------------------|---------------------------|---------------------------------------|-------------------------------------|---------------------------|---------------------------------------|---------------------------------------|-------------------------------------|--------|
| | 金額 (百萬美元) Amount (Mil. US\$) | 年增率 Annual rate of change (%) | 份額 Export share (%) | 金額 (百萬美元) Amount (Mil. US\$) | 年增率 Annual rate of change (%) | 份額 Export share (%) | 金額 (百萬美元) Amount (Mil. US\$) | 金額 (百萬美元) Amount (Mil. US\$) | 年增率 Annual rate of change (%) | |
| 2001 | 19,989 | -- | 15.79 | 15,168 | -- | 13.84 | 4,821 | 35,157 | -- | |
| 2002 | 18,808 | -5.91 | 13.85 | 14,851 | -2.09 | 12.90 | 3,957 | 33,659 | -4.26 | |
| 2003 | 20,765 | 10.41 | 13.72 | 16,459 | 10.83 | 12.64 | 4,306 | 37,224 | 10.59 | |
| 2004 | 23,820 | 14.71 | 12.97 | 21,520 | 30.75 | 12.54 | 2,300 | 45,340 | 21.80 | |
| 2005 | 23,642 | -0.75 | 11.83 | 22,142 | 2.89 | 11.94 | 1,499 | 45,784 | 0.98 | |
| 2006 | 26,151 | 10.61 | 11.58 | 21,918 | -1.01 | 10.62 | 4,233 | 48,069 | 4.99 | |
| 2007 | 28,751 | 9.94 | 11.56 | 23,996 | 9.48 | 10.75 | 4,755 | 52,746 | 9.73 | |
| 2008 | 30,024 | 4.43 | 11.63 | 24,982 | 4.11 | 10.22 | 5,042 | 55,006 | 4.28 | |
| 2009 | 22,726 | -24.31 | 11.05 | 19,776 | -20.84 | 11.14 | 2,949 | 42,502 | -22.73 | |
| 2010 | 29,546 | 30.01 | 10.63 | 26,934 | 36.20 | 10.51 | 2,612 | 56,481 | 32.89 | |
| 2011 | 31,427 | 6.37 | 10.04 | 30,775 | 14.26 | 10.68 | 652 | 62,202 | 10.13 | |
| 2012 | 28,897 | -8.05 | 9.43 | 29,507 | -4.12 | 10.64 | -610 | 58,404 | -6.11 | |
| 2013 | 27,906 | -3.43 | 8.96 | 31,012 | 5.10 | 11.16 | -3,106 | 58,918 | 0.88 | |
| 2014 | 29,122 | 4.36 | 9.10 | 32,045 | 3.33 | 11.37 | -2,923 | 61,168 | 3.82 | |
| 2015 | 25,964 | -10.85 | 9.10 | 28,499 | -11.07 | 12.01 | -2,535 | 54,462 | -10.96 | |
| 2015 | 5 | 2,243 | -7.61 | 8.60 | 2,443 | -3.11 | 11.80 | -201 | 4,686 | -5.31 |
| | 6 | 2,161 | -11.00 | 9.20 | 2,811 | -9.11 | 13.10 | -650 | 4,972 | -9.94 |
| | 7 | 2,197 | -15.23 | 9.20 | 2,591 | -8.68 | 12.60 | -394 | 4,787 | -11.81 |
| | 8 | 2,252 | -12.48 | 9.20 | 2,638 | 15.56 | 12.70 | -387 | 4,890 | 0.70 |
| | 9 | 2,205 | -9.20 | 9.60 | 2,048 | -29.71 | 11.30 | 157 | 4,253 | -20.39 |
| | 10 | 2,122 | -11.46 | 8.70 | 2,057 | -19.70 | 11.00 | 66 | 4,179 | -15.71 |
| | 11 | 2,142 | -4.39 | 9.50 | 2,498 | -4.02 | 12.20 | -356 | 4,640 | -4.19 |
| | 12 | 2,246 | -4.09 | 10.00 | 2,071 | -21.24 | 11.30 | 175 | 4,317 | -13.16 |
| 2016 | 1 | 2,218 | 3.53 | 10.00 | 2,479 | -2.65 | 13.30 | -261 | 4,697 | 0.17 |
| | 2 | 1,862 | -4.71 | 10.50 | 1,807 | 0.39 | 13.30 | 56 | 3,669 | -2.27 |
| | 3 | 2,203 | -3.03 | 9.70 | 2,307 | -16.97 | 12.70 | -104 | 4,510 | -10.70 |
| | 4 | 2,240 | 10.45 | 10.10 | 2,102 | -5.19 | 12.00 | 137 | 4,342 | 2.28 |
| | 5 | 2,306 | 2.82 | 9.80 | 2,408 | -1.44 | 12.00 | -102 | 4,714 | 0.60 |
| | 6 | 2,163 | 0.11 | 9.50 | 2,369 | -15.72 | 12.30 | -206 | 4,533 | -8.84 |
| | 7 | 2,289 | 4.22 | 9.50 | 2,747 | 6.05 | 13.40 | -458 | 5,037 | 5.21 |
| | 8 | 2,299 | 2.12 | 9.30 | 2,415 | -8.47 | 11.70 | -115 | 4,714 | -3.59 |
| | 9 | 1,962 | -11.02 | 8.70 | 2,253 | 10.01 | 12.40 | -291 | 4,215 | -0.89 |
| 1-當月 | 19,543 | 0.46 | 9.60 | 20,887 | -4.51 | 12.50 | -1,344 | 40,430 | -2.17 | |

資料來源：財政部統計處，「105年9月海關進出口貿易統計速報」。

Source : Department of Statistics, Ministry of Finance, "Summary of Exports and Imports for Sep., 2016".

表十一：兩岸經貿
Table 11. Trade Across the Taiwan Straits



| 年與月 Year & Month | 臺灣對中國大陸及香港之進出口狀況 Trade With China and Hong Kong | | | | | | 出入超金額 百萬美元 Net Export Amount (Mil.US\$) | 匯率 人民幣兌 一美元 Exchange Rate (RMB/US\$) | 中國大陸 消費者物價 總指數 年增率 China's Consumer Price Index |
|---------------------|--|--|---------------------------|---------------------------------------|--|---------------------------|---|---|---|
| | 出口值 Exports | | | 進口值 Imports | | | | | |
| | 金額 (百萬美元) Amount (Mil. US\$) | 年增率 Annual rate of change (%) | 份額 Export share (%) | 金額 (百萬美元) Amount (Mil. US\$) | 年增率 Annual rate of change (%) | 份額 Export share (%) | | | |
| 2001 | 33,810 | -- | 26.70 | 7,833 | -- | 7.15 | 25,977 | 8.28 | 0.73 |
| 2002 | 43,739 | 29.37 | 32.21 | 9,795 | 25.04 | 8.51 | 33,945 | 8.28 | -1.48 |
| 2003 | 54,192 | 23.90 | 35.81 | 12,836 | 31.05 | 9.86 | 41,356 | 8.28 | 1.95 |
| 2004 | 69,791 | 28.78 | 38.00 | 19,001 | 48.03 | 11.08 | 50,790 | 8.28 | 2.70 |
| 2005 | 78,276 | 12.16 | 39.19 | 22,063 | 16.11 | 11.90 | 56,214 | 8.19 | -2.01 |
| 2006 | 90,046 | 15.04 | 39.86 | 26,604 | 20.58 | 12.89 | 63,442 | 7.97 | -0.34 |
| 2007 | 101,203 | 12.39 | 40.68 | 29,857 | 12.23 | 13.38 | 71,346 | 7.61 | 3.25 |
| 2008 | 100,571 | -0.62 | 38.97 | 32,932 | 10.30 | 13.47 | 67,638 | 6.95 | 1.08 |
| 2009 | 84,640 | -15.84 | 41.15 | 25,602 | -22.26 | 14.42 | 59,038 | 6.83 | -6.22 |
| 2010 | 116,220 | 37.31 | 41.80 | 37,822 | 47.73 | 14.76 | 78,398 | 6.77 | 3.33 |
| 2011 | 125,971 | 8.39 | 40.26 | 45,681 | 20.78 | 15.86 | 80,290 | 6.46 | 5.41 |
| 2012 | 121,161 | -3.82 | 39.54 | 44,016 | -3.64 | 15.87 | 77,145 | 6.31 | 2.60 |
| 2013 | 125,305 | 3.42 | 40.24 | 44,931 | 2.08 | 16.16 | 80,375 | 6.19 | 2.62 |
| 2014 | 128,534 | 2.58 | 40.16 | 50,989 | 13.48 | 18.09 | 77,544 | 6.15 | 1.99 |
| 2015 | 112,540 | -12.44 | 39.44 | 46,734 | -8.35 | 19.70 | 65,806 | 6.23 | 1.44 |
| 2015 5 | 10,405 | -8.57 | 40.00 | 4,007 | -3.78 | 19.30 | 6,398 | 6.11 | 1.23 |
| 6 | 9,052 | -17.82 | 38.70 | 3,920 | -17.95 | 18.30 | 5,133 | 6.12 | 1.39 |
| 7 | 9,275 | -14.72 | 38.90 | 3,839 | -15.95 | 18.70 | 5,436 | 6.12 | 1.65 |
| 8 | 9,628 | -16.44 | 39.40 | 4,052 | -8.33 | 19.40 | 5,577 | 6.31 | 1.96 |
| 9 | 8,848 | -16.21 | 38.50 | 3,686 | -16.74 | 20.40 | 5,162 | 6.37 | 1.60 |
| 10 | 9,884 | -10.37 | 40.40 | 3,924 | -3.92 | 21.00 | 5,959 | 6.35 | 1.30 |
| 11 | 9,000 | -19.70 | 39.80 | 4,207 | -11.38 | 20.60 | 4,793 | 6.36 | 1.50 |
| 12 | 9,027 | -15.36 | 40.00 | 3,836 | -8.80 | 20.80 | 5,192 | 6.45 | 1.60 |
| 2016 1 | 8,557 | -19.24 | 38.60 | 4,107 | -7.56 | 22.00 | 4,451 | 6.57 | 1.80 |
| 2 | 6,276 | -12.99 | 35.30 | 2,323 | -25.06 | 17.10 | 3,953 | 6.54 | 2.30 |
| 3 | 8,795 | -14.26 | 38.70 | 3,837 | -0.78 | 21.10 | 4,958 | 6.51 | 2.30 |
| 4 | 8,714 | -6.84 | 39.20 | 3,525 | -8.51 | 20.20 | 5,189 | 6.48 | 2.30 |
| 5 | 9,348 | -10.17 | 39.70 | 3,995 | -0.32 | 19.90 | 5,353 | 6.53 | 2.00 |
| 6 | 8,642 | -4.53 | 37.80 | 3,776 | -3.65 | 19.60 | 4,866 | 6.60 | 1.90 |
| 7 | 9,593 | 3.42 | 39.80 | 3,871 | 0.84 | 18.90 | 5,721 | 6.68 | 1.80 |
| 8 | 9,962 | 3.47 | 40.40 | 4,029 | -0.56 | 19.50 | 5,933 | 6.65 | 1.30 |
| 9 | 9,393 | 6.17 | 41.60 | 3,584 | -2.77 | 19.70 | 5,810 | 6.67 | -- |
| 1-當月 | 79,280 | -6.32 | 39.10 | 33,047 | -4.95 | 19.80 | 46,234 | 6.58 | 1.96 |

資料來源：財政部統計處，「105年9月海關進出口貿易統計速報」；中央銀行，「金融統計月報」；中國統計局。

Source : Department of Statistics, Ministry of Finance, "Summary of Exports and Imports for Sep., 2016";
Central Bank of Republic of China (Taiwan), "Financial Statistics Monthly, Republic of China (Taiwan)".
National Bureau of Statistics of China, "Consumer Prices for Aug., 2016".