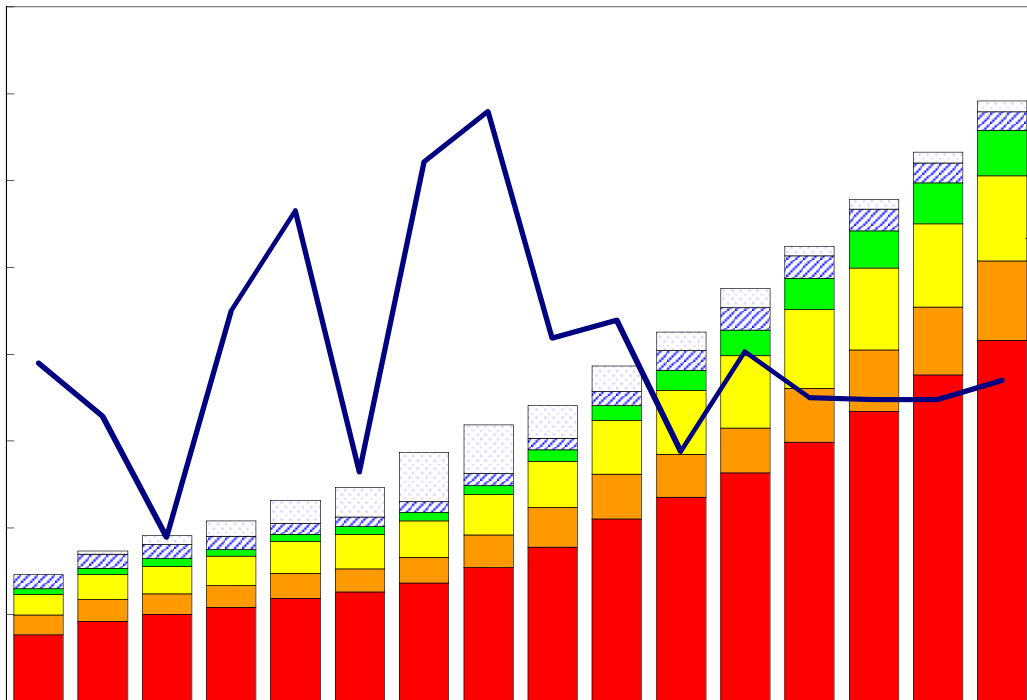


臺灣重要經濟變動指標

Major Economic Indicators for Taiwan



中華經濟研究院

經濟展望中心 編製

中華民國104年9月

Chung-Hua Institution for Economic Research

September 2015

目次

Index

| | |
|-------------------------|---|
| 臺灣經濟預測.....I | Taiwan's Macroeconomic Forecasts.....I |
| 表一：主要總體經濟指標.....2-3 | Table 1 : GDP Components by Expenditure.....2-3 |
| 表二：各業產值概況.....4-5 | Table 2 : GDP Components by Industry.....4-5 |
| 表三：生產概況.....6 | Table 3 : Industry Indicators.....6 |
| 表四：景氣概況.....7 | Table 4 : Cyclical Indicators.....7 |
| 表五：物價與金融概況.....8-9 | Table 5 : Prices and Financial Situation.....8-9 |
| 表六：臺灣進出口貿易.....10 | Table 6 : Foreign Trade Values.....10 |
| 表七：臺灣對美國之進出口狀況.....11 | Table 7 : Trade with the United States11 |
| 表八：臺灣對日本之進出口狀況.....12 | Table 8 : Trade with Japan.....12 |
| 表九：臺灣對東協六國之進出口狀況.....13 | Table 9 : Trade with ASEAN6.....13 |
| 表十：臺灣對香港之進出口狀況.....14 | Table 10 : Trade with Hong Kong14 |
| 表十一：兩岸經貿.....15 | Table 11 : Trade across the Taiwan Straits.....15 |

臺灣經濟預測

Taiwan's Macroeconomic Forecasts

| | 2015年季預測 | | | | 2014年 | 2015年 | 2016年 |
|--|---------------------|----------|----------|----------|-----------|-----------|-----------|
| | Year 2015 Quarterly | | | | | | |
| | 第1季 | 第2季 | 第3季 | 第4季 | 實際值 | 預測值 | 預測值 |
| | Q1 | Q2 | Q3 | Q4 | 2014 | 2015 | 2016 |
| GDP, GNI/及其組成, 新臺幣十億元, GDP, GNI and Major Components, Billions NT Dollars | | | | | | | |
| 實質GDP, Real GDP | 3,754.77 | 3,920.82 | 4,074.26 | 4,218.12 | 15,496.85 | 15,967.96 | 16,480.48 |
| 年變動率, yoy(%) | 3.37 | 2.86 | 2.40 | 3.53 | 3.77 | 3.04 | 3.21 |
| 每人平均GNI, per capita GNI^[1] | 5,880.93 | 5,877.51 | 5,978.67 | 6,184.19 | 23,429.97 | 23,921.29 | 25,366.36 |
| 民間消費, Private Consumption | 2,112.62 | 2,109.01 | 2,182.76 | 2,168.69 | 8,367.61 | 8,573.08 | 8,783.73 |
| 年變動率, yoy(%) | 2.52 | 2.23 | 2.15 | 2.92 | 2.95 | 2.46 | 2.46 |
| 固定資本形成, Total Fixed Investment | 826.61 | 877.36 | 899.37 | 902.53 | 3,484.80 | 3,505.87 | 3,595.41 |
| 年變動率, yoy(%) | 0.35 | 1.25 | -0.42 | 1.25 | 1.84 | 0.60 | 2.55 |
| 民間投資, Private Fixed Investment | 717.52 | 726.51 | 747.70 | 686.16 | 2,813.66 | 2,877.89 | 3,007.66 |
| 年變動率, yoy(%) | 2.46 | 1.56 | 0.69 | 4.69 | 3.46 | 2.28 | 4.51 |
| 財貨與服務輸出, Exports, gds+serv | 2,771.90 | 2,923.69 | 3,027.00 | 3,191.14 | 11,468.41 | 11,913.73 | 12,451.54 |
| 年變動率, yoy(%) | 5.93 | 2.98 | 2.48 | 4.32 | 5.90 | 3.88 | 4.51 |
| 財貨與服務輸入, Imports, gds+serv | 2,474.32 | 2,546.67 | 2,621.91 | 2,679.36 | 10,150.33 | 10,322.25 | 10,637.55 |
| 年變動率, yoy(%) | 2.48 | 1.57 | -0.08 | 2.87 | 5.75 | 1.69 | 3.05 |
| 海關出口 (fob, 億美元), Merchandise Export (fob, US \$100 mil)[2] | 702.40 | 721.94 | 816.64 | 820.72 | 3,136.96 | 3,061.70 | 3,203.87 |
| 年變動率, yoy(%) | -4.18 | -9.81 | 0.55 | 3.72 | 2.70 | -2.40 | 4.64 |
| 海關進口 (cif, 億美元), Merchandise Import (cif, US \$100mil)[2] | 568.29 | 597.94 | 669.22 | 701.47 | 2,740.26 | 2,536.92 | 2,644.61 |
| 年變動率, yoy(%) | -14.96 | -14.97 | -5.70 | 6.42 | 1.53 | -7.42 | 4.24 |
| 躉售物價指數, Wholesale Price Index [2] | 89.05 | 87.85 | 92.60 | 91.63 | 95.89 | 90.28 | 91.07 |
| 年變動率, yoy(%) | -8.49 | -9.32 | -3.88 | -1.50 | -0.56 | -5.85 | 0.87 |
| 消費者物價指數, Consumer Price Index [2] | 102.45 | 103.29 | 105.29 | 104.66 | 103.97 | 103.92 | 105.06 |
| 年變動率, yoy(%) | -0.59 | -0.70 | 0.58 | 0.52 | 1.20 | -0.04 | 1.09 |
| M2貨幣存量(日平均), Money Stock (M2) | 38,279.4 | 38,812.3 | 39,105.4 | 39,168.8 | 36,576.7 | 38,841.5 | 41,068.2 |
| 年變動率, yoy(%) | 6.32 | 6.67 | 6.25 | 5.54 | 5.66 | 6.19 | 5.73 |
| 臺幣兌美元匯率, Exchange Rate(NT\$/US\$)[2] | 31.59 | 30.99 | 31.13 | 31.06 | 30.37 | 31.20 | 30.85 |
| 年變動率, yoy(%) ^[3] | -4.05 | -2.76 | -3.56 | -0.55 | -2.01 | -2.72 | 1.10 |
| 商業本票利率, 31-90 day Commercial Paper Rate | 0.64 | 0.64 | 0.65 | 0.65 | 0.62 | 0.65 | 0.70 |
| 失業率(%), Unemployment Rate(%) | 3.71 | 3.67 | 3.87 | 3.73 | 3.96 | 3.75 | 3.66 |

說明:有關匯率變動百分比, 正值表示升值, 負數表示貶值比率。

資料來源:中華經濟研究院, 經濟展望中心, 2015年7月16日。

Source: CEF, CIER, July 16, 2015.

說明: [1]: 有關每人平均GNI在此以美元表示。

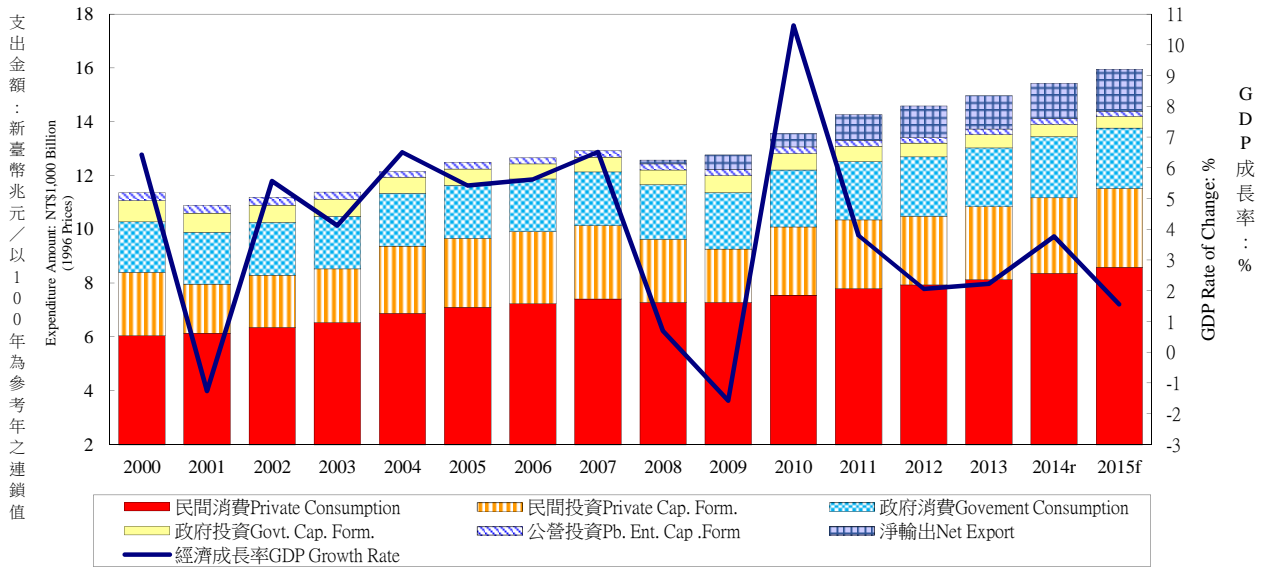
[2]: 表示2015年第2季資料為官方統計之粗估值, 非預測值。

[3]: 有關匯率年增率(%), 正值表示升值, 負數表示貶值比率。

表一：主要總體經濟指標

Table 1. GDP Components by Expenditure

實質GDP各需求支出及成長率 Real GDP Expenditure & Growth Rate



| 年與季 Year & Quarter | GDP 經濟成長率 Economic Growth Rate (%) | 名目GDP (新台幣十億元) GDP (Bil. NT\$) | 民間消費 Private Consumption Expenditure | | 民間固定投資 Private Spe. Gross Fixed Cap. Formation | | 商品及勞務輸出 Exports of Goods and Services | | 商品及勞務輸入 Imports of Goods and Services | | 政府消費 Government Consumption Expenditure | |
|-----------------------|---------------------------------------|-----------------------------------|---|-------------------------------|---|-------------------------------|--|-------------------------------|--|-------------------------------|--|-------------------------------|
| | | | 占GDP /GDP (%) | 年增率 Annual Rate of Change (%) | 占GDP /GDP (%) | 年增率 Annual Rate of Change (%) | 占GDP /GDP (%) | 年增率 Annual Rate of Change (%) | 占GDP /GDP (%) | 年增率 Annual Rate of Change (%) | 占GDP /GDP (%) | 年增率 Annual Rate of Change (%) |
| 2000 | 6.42 | 10,351 | 55.13 | 5.24 | 18.47 | 14.52 | 51.91 | 18.00 | 49.92 | 14.85 | 15.69 | 0.62 |
| 2001 | -1.26 | 10,158 | 56.67 | 1.43 | 14.53 | -22.47 | 48.66 | -8.47 | 43.45 | -14.57 | 16.70 | 2.44 |
| 2002 | 5.57 | 10,681 | 55.74 | 3.48 | 14.75 | 6.60 | 50.81 | 11.64 | 43.93 | 6.39 | 16.38 | 1.77 |
| 2003 | 4.12 | 10,966 | 55.63 | 2.86 | 15.12 | 3.21 | 54.02 | 10.02 | 47.32 | 7.56 | 15.98 | -0.66 |
| 2004 | 6.51 | 11,650 | 55.72 | 5.26 | 18.68 | 24.58 | 59.94 | 15.73 | 56.49 | 17.64 | 15.47 | 1.13 |
| 2005 | 5.42 | 12,092 | 56.10 | 3.36 | 18.29 | 2.43 | 60.62 | 7.62 | 56.44 | 2.90 | 15.26 | 0.42 |
| 2006 | 5.62 | 12,641 | 54.96 | 1.79 | 18.83 | 4.57 | 65.79 | 11.38 | 60.03 | 4.66 | 14.67 | -0.63 |
| 2007 | 6.52 | 13,407 | 53.69 | 2.42 | 18.66 | 1.88 | 69.74 | 10.45 | 61.79 | 2.89 | 14.34 | 2.20 |
| 2008 | 0.70 | 13,151 | 55.21 | -1.69 | 17.37 | -14.15 | 70.19 | 0.55 | 65.00 | -4.13 | 15.14 | 1.54 |
| 2009 | -1.57 | 12,962 | 55.36 | 0.01 | 14.94 | -15.32 | 60.39 | -8.42 | 51.51 | -13.22 | 15.86 | 3.22 |
| 2010 | 10.63 | 14,119 | 53.10 | 3.76 | 17.68 | 27.63 | 70.92 | 25.67 | 63.85 | 28.03 | 14.86 | 1.05 |
| 2011 | 3.80 | 14,312 | 54.49 | 3.12 | 17.88 | 1.20 | 72.80 | 4.20 | 66.08 | -0.46 | 15.15 | 1.95 |
| 2012 | 2.06 | 14,687 | 54.71 | 1.82 | 17.48 | -0.35 | 70.44 | 0.41 | 62.99 | -1.78 | 15.35 | 2.16 |
| 2013 | 2.23 | 15,221 | 54.20 | 2.35 | 17.59 | 6.67 | 69.51 | 3.51 | 60.41 | 3.34 | 14.63 | -1.15 |
| 2014 | 3.77 | 16,084 | 53.19 | 2.95 | 17.42 | 3.46 | 70.08 | 5.90 | 59.68 | 5.75 | 14.49 | 3.69 |
| 2015f | 1.56 | 16,773 | 52.33 | 3.05 | 16.78 | 2.65 | 66.06 | 1.35 | 52.97 | 1.96 | 13.69 | -1.42 |
| 2016f | 2.70 | 17,245 | 52.38 | 2.51 | 16.33 | 1.33 | 67.14 | 3.93 | 53.31 | 2.93 | 13.50 | 1.19 |
| 2015 1r | 3.84 | 4,158 | 51.81 | 3.53 | 17.24 | 1.76 | 64.42 | 6.13 | 50.99 | 2.71 | 14.78 | -2.66 |
| 2p | 0.52 | 4,052 | 52.98 | 2.85 | 17.10 | 0.38 | 66.08 | -1.30 | 53.91 | 2.15 | 13.05 | 0.05 |
| 3f | 0.10 | 4,202 | 53.57 | 2.94 | 17.81 | 4.36 | 66.30 | -0.39 | 54.69 | 1.64 | 13.24 | -1.42 |
| 4f | 1.90 | 4,360 | 51.05 | 2.90 | 15.06 | 4.14 | 67.37 | 1.39 | 52.33 | 1.40 | 13.67 | -1.64 |
| 2016 1f | 2.03 | 4,248 | 52.78 | 2.63 | 16.70 | 2.11 | 64.12 | 1.60 | 51.16 | 2.51 | 14.73 | 2.25 |
| 2f | 3.39 | 4,213 | 52.40 | 2.32 | 16.37 | 0.84 | 68.96 | 6.40 | 54.33 | 3.06 | 12.62 | 0.13 |
| 3f | 3.25 | 4,330 | 53.31 | 2.48 | 17.27 | 0.18 | 67.93 | 4.88 | 55.40 | 3.27 | 13.03 | 1.10 |
| 4f | 2.16 | 4,454 | 51.09 | 2.60 | 15.03 | 2.33 | 67.54 | 2.87 | 52.37 | 2.84 | 13.59 | 1.33 |

資料來源：行政院主計總處，「國民所得統計及國內經濟情勢展望」，2015年8月14日。

- 註：
1. 以上所列为政府發佈資料，本院對GDP的預測列於本刊第一部份臺灣總體經濟預測。
 2. 2014年第2季(含)以前歷年各季資料均已依5年修正結果追溯修正。
 3. 2014年11月起主計總處由定基法改以連鎖法衡量經濟成長率。
 4. 2015年第2季數據為主計總處7月31日發布之國民所得概估統計。

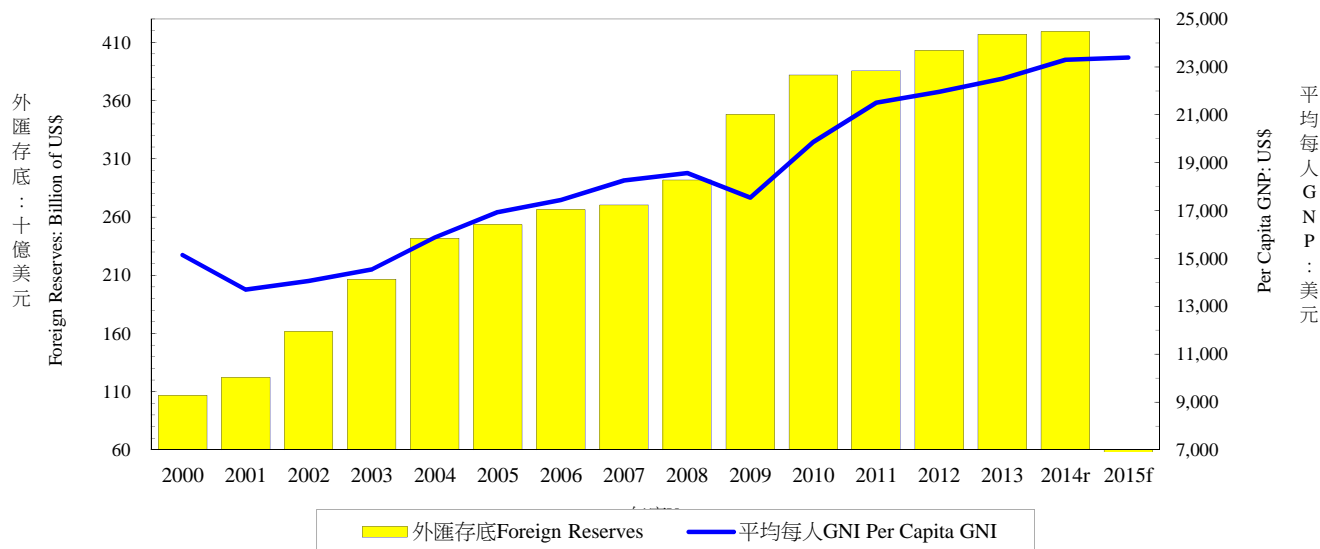
Source：Directorate General of Budget, Accounting and Statistics, Executive Yuan, R.O.C..

表一：主要總體經濟指標

Table 1. GDP Components by Expenditure

外匯存底及平均每人GNI

Total Foreign Reserves & Per Capita GNI



| 年與季 Year & Quarter | 公營事業固定投資 Public Enter. Gross Fixed Capita Formation | | 政府固定投資 Government Gross Fixed Capita Formation | | 存貨增加 Increase in Stocks | | 國外要素所得淨額 Net Factor Income from the Rest of the World | | 平均每人 GNI (美元) Per Capita GNI (US\$) | 外匯存底 (十億美元) Total Foreign Reserves (Billion of US\$) |
|-----------------------|---|--|--|--|----------------------------|--|---|--|---|--|
| | 占 GDP /GDP (%) | 年增率 Annual Rate of Change (%) | 占 GDP /GDP (%) | 年增率 Annual Rate of Change (%) | 占 GDP /GDP (%) | 新台幣 百萬元 (以2011年為參考 年之連鎖值) NT Mil | 占 GDP /GDP (%) | 年增率 Annual Rate of Change (%) | | |
| 2000 | 2.39 | -3.56 | 5.44 | -3.50 | 0.89 | 98,430 | 1.35 | 52.47 | 15,142 | 106.7 |
| 2001 | 2.43 | 0.68 | 5.07 | -8.26 | -0.62 | -75,925 | 1.89 | 37.85 | 13,703 | 122.2 |
| 2002 | 2.23 | -2.97 | 4.42 | -9.69 | -0.41 | -46,186 | 2.27 | 26.54 | 14,062 | 161.7 |
| 2003 | 2.11 | -4.42 | 4.35 | -2.73 | 0.11 | 12,710 | 3.00 | 35.99 | 14,544 | 206.6 |
| 2004 | 1.66 | -19.36 | 4.16 | -7.04 | 0.86 | 86,782 | 3.19 | 11.46 | 15,879 | 241.7 |
| 2005 | 1.77 | 12.77 | 4.12 | 2.65 | 0.28 | 33,677 | 2.41 | -23.38 | 16,930 | 253.3 |
| 2006 | 1.59 | -7.73 | 3.81 | -8.00 | 0.38 | 42,769 | 2.47 | 6.27 | 17,446 | 266.1 |
| 2007 | 1.57 | 2.20 | 3.68 | -2.80 | 0.12 | 16,971 | 2.48 | 5.07 | 18,256 | 270.3 |
| 2008 | 1.65 | -1.98 | 4.13 | 0.44 | 1.30 | 166,513 | 2.39 | -8.47 | 18,564 | 291.7 |
| 2009 | 1.78 | 2.37 | 4.59 | 14.07 | -1.40 | -193,262 | 3.19 | 32.13 | 17,531 | 348.2 |
| 2010 | 1.77 | 7.49 | 4.17 | -2.92 | 1.34 | 196,426 | 3.04 | 2.83 | 19,864 | 382.0 |
| 2011 | 1.54 | -13.44 | 3.97 | -5.78 | 0.25 | 35,921 | 2.71 | -10.85 | 21,507 | 385.5 |
| 2012 | 1.39 | -7.42 | 3.48 | -10.95 | 0.15 | 19,020 | 3.09 | 14.73 | 21,967 | 403.2 |
| 2013 | 1.32 | 2.96 | 3.24 | -2.70 | -0.07 | -33,809 | 2.79 | -7.33 | 22,513 | 416.8 |
| 2014 | 1.31 | 4.42 | 2.86 | -8.04 | 0.34 | 56,613 | -- | -- | 23,298 | 419.0 |
| 2015f | 1.17 | -3.71 | 2.63 | -2.18 | 0.31 | -- | -- | -- | 23,397 | -- |
| 2016f | 1.18 | 4.76 | 2.60 | 2.33 | 0.18 | -- | -- | -- | 23,852 | -- |
| 2015 1r | 0.67 | -30.40 | 2.02 | -1.92 | 0.05 | 2,380 | -- | -- | 5,862 | 414.7 |
| 2p | 1.19 | 22.80 | 2.62 | -0.53 | 0.89 | 40,708 | -- | -- | 5,757 | 421.4 |
| 3f | 1.18 | 12.69 | 2.62 | -0.80 | -0.03 | -- | -- | -- | 5,808 | 424.8 |
| 4f | 1.61 | -12.86 | 3.22 | -4.56 | 0.35 | -- | -- | -- | 5,970 | -- |
| 2016 1f | 0.71 | 11.09 | 1.98 | 2.78 | 0.13 | -- | -- | -- | 5,947 | -- |
| 2f | 1.15 | 2.45 | 2.55 | 1.29 | 0.28 | -- | -- | -- | 5,821 | -- |
| 3f | 1.10 | -3.57 | 2.59 | 1.93 | 0.17 | -- | -- | -- | 5,966 | -- |
| 4f | 1.72 | 9.86 | 3.24 | 3.17 | 0.15 | -- | -- | -- | 6,118 | -- |

資料來源：行政院主計總處，「國民所得統計及國內經濟情勢展望」，2015年8月14日。

註：1. 以上所列为政府發佈資料，本院對GDP的預測列於本刊第一部份臺灣總體經濟預測。

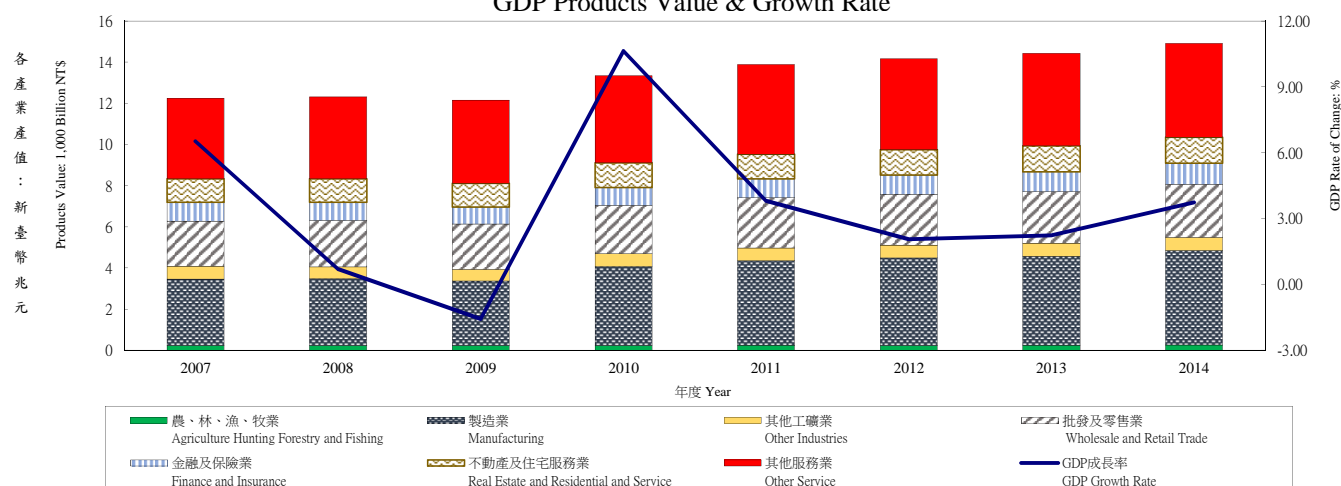
2. 2014年第2季(含)以前歷年各季資料均已依5年修正結果追溯修正。

3. 2014年11月起主計總處由定基法改以連鎖法衡量經濟成長率。

4. 2015年第2季數據為主計總處7月31日發布之國民所得概估統計。

Source：Directorate General of Budget, Accounting and Statistics, Executive Yuan, R.O.C.; Central Bank of Republic of China (Taiwan).

表二：各業產值概況
Table 2. GDP Components by Industry
GDP各產業產值及成長率
GDP Products Value & Growth Rate



| 年與季 Year & Quarter | 國內 生產毛額 GDP (新臺幣 十億元) 以2011年為參 考年之連鎖值 計算GDP (Bil. NT\$) | GDP 成長率 GDP Rate of Change (%) | 產業 Sector | | | | | | | | | | | | | | | |
|--------------------------|---|---|---|---|----------------------------------|---|----------------------|---|---|---|--|---|---------------------|---|---------------------|---|---------------------|---|
| | | | 農、林、漁、牧業 Agriculture Hunting Forestry and Fishing | | 工業 Industries | | | | | | | | | | | | 營造業 Construction | |
| | | | 合計 Sub Total | | 礦業及土石採取業 Mining and Quarrying | | 製造業 Manufacturing | | 電力及燃氣供應業 Electricity and Gas Supply | | 供水供應及汙染整治業 Water Supply and Remediation Services | | | | | | | |
| | | | 占GDP /GDP (%) | 年增率 Annual Rate of Change (%) | 占GDP /GDP (%) | 年增率 Annual Rate of Change (%) | 占GDP /GDP (%) | 年增率 Annual Rate of Change (%) | 占GDP /GDP (%) | 年增率 Annual Rate of Change (%) | 占GDP /GDP (%) | 年增率 Annual Rate of Change (%) | 占GDP /GDP (%) | 年增率 Annual Rate of Change (%) | 占GDP /GDP (%) | 年增率 Annual Rate of Change (%) | 占GDP /GDP (%) | 年增率 Annual Rate of Change (%) |
| 2007 | 12,573 | 6.52 | 1.45 | -- | 34.04 | -- | 0.16 | -- | 29.59 | -- | 1.02 | -- | 0.69 | -- | 2.57 | -- | | |
| 2008 | 12,661 | 0.70 | 1.55 | 0.03 | 32.09 | -0.21 | 0.17 | -11.82 | 28.27 | 0.70 | 0.31 | -2.80 | 0.70 | 2.89 | 2.65 | -9.88 | | |
| 2009 | 12,463 | -1.57 | 1.68 | -2.61 | 31.99 | -3.62 | 0.13 | -11.99 | 27.21 | -3.42 | 1.47 | 27.68 | 0.69 | -0.55 | 2.48 | -9.60 | | |
| 2010 | 13,788 | 10.63 | 1.60 | 2.24 | 33.99 | 20.32 | 0.13 | 47.04 | 29.29 | 22.24 | 1.30 | 5.15 | 0.68 | 2.18 | 2.60 | 11.48 | | |
| 2011 | 14,312 | 3.80 | 1.72 | 4.52 | 33.02 | 6.06 | 0.12 | -3.98 | 28.66 | 6.86 | 0.88 | 3.24 | 0.68 | -3.68 | 2.68 | 1.79 | | |
| 2012 | 14,608 | 2.06 | 1.67 | -3.20 | 32.75 | 3.33 | 0.11 | -1.01 | 28.37 | 3.72 | 0.93 | 2.93 | 0.69 | 6.40 | 2.65 | -1.39 | | |
| 2013 | 14,934 | 2.23 | 1.70 | 3.45 | 33.20 | 1.62 | 0.10 | -3.72 | 28.37 | 1.54 | 1.35 | 3.45 | 0.66 | 0.51 | 2.71 | 2.50 | | |
| 2014 | 15,497 | 3.77 | 1.88 | 3.36 | 34.09 | 5.60 | 0.11 | -4.98 | 29.10 | 6.30 | 1.54 | 1.19 | 0.61 | 0.40 | 2.73 | 1.71 | | |
| 2011 1 | 3,437 | 7.37 | 1.55 | 5.51 | 33.56 | 14.60 | 0.12 | 6.42 | 29.03 | 15.97 | 1.00 | 8.41 | 0.56 | -3.46 | 2.84 | 6.09 | | |
| 2011 2 | 3,561 | 4.28 | 1.87 | 4.63 | 33.58 | 9.13 | 0.12 | -2.50 | 29.09 | 9.96 | 0.83 | -7.11 | 0.77 | -3.59 | 2.79 | 5.83 | | |
| 2011 3 | 3,674 | 3.32 | 1.54 | 1.73 | 33.71 | 3.43 | 0.11 | -8.99 | 29.20 | 4.46 | 1.15 | -7.70 | 0.70 | -4.91 | 2.55 | -1.06 | | |
| 2011 4 | 3,640 | 0.68 | 1.91 | 6.01 | 31.23 | -0.88 | 0.14 | -8.34 | 27.34 | -0.67 | 0.53 | 16.88 | 0.68 | -2.73 | 2.53 | -4.19 | | |
| 2012 1 | 3,464 | 0.78 | 1.54 | -4.70 | 31.33 | 1.26 | 0.11 | 0.10 | 27.05 | 1.34 | 0.68 | 4.28 | 0.63 | 8.74 | 2.86 | -2.71 | | |
| 2012 2 | 3,576 | 0.42 | 1.86 | -2.59 | 32.93 | 1.90 | 0.10 | 1.28 | 29.04 | 2.14 | 0.27 | 0.86 | 0.79 | 6.75 | 2.73 | -1.97 | | |
| 2012 3 | 3,759 | 2.31 | 1.64 | 0.59 | 34.63 | 4.20 | 0.09 | -2.60 | 29.80 | 5.17 | 1.51 | -9.15 | 0.70 | 5.63 | 2.53 | -0.43 | | |
| 2012 4 | 3,808 | 4.63 | 1.64 | -5.68 | 32.07 | 5.73 | 0.12 | -2.45 | 27.58 | 5.97 | 1.22 | 12.16 | 0.66 | 4.90 | 2.48 | -0.19 | | |
| 2013 1 | 3,512 | 1.41 | 1.60 | 6.45 | 31.60 | 1.46 | 0.11 | -2.41 | 26.86 | 1.29 | 1.06 | -0.62 | 0.60 | 0.19 | 2.97 | 3.75 | | |
| 2013 2 | 3,670 | 2.60 | 1.83 | 8.73 | 33.66 | 0.40 | 0.10 | -2.56 | 29.06 | 0.46 | 1.05 | -1.38 | 0.75 | 0.87 | 2.70 | 0.75 | | |
| 2013 3 | 3,814 | 1.45 | 1.59 | -9.35 | 35.17 | 1.96 | 0.09 | -2.80 | 29.96 | 1.77 | 1.85 | 13.97 | 0.68 | 1.37 | 2.59 | 1.06 | | |
| 2013 4 | 3,938 | 3.40 | 1.78 | 7.15 | 32.33 | 2.58 | 0.12 | -6.45 | 27.59 | 2.56 | 1.43 | 1.68 | 0.63 | -0.40 | 2.57 | 4.95 | | |
| 2014 1 | 3,632 | 3.41 | 2.01 | 5.00 | 32.11 | 3.15 | 0.10 | -14.70 | 26.99 | 3.38 | 1.51 | 9.70 | 0.56 | 0.72 | 2.95 | 0.36 | | |
| 2014 2 | 3,812 | 3.87 | 2.02 | -2.06 | 34.62 | 5.81 | 0.10 | -8.65 | 29.69 | 6.26 | 1.36 | 18.29 | 0.70 | -0.42 | 2.77 | 3.35 | | |
| 2014 3 | 3,979 | 4.32 | 1.68 | 1.33 | 35.82 | 6.84 | 0.09 | -3.12 | 30.39 | 7.86 | 2.07 | 0.12 | 0.63 | 1.72 | 2.64 | 1.25 | | |
| 2014 4 | 4,074 | 3.47 | 1.82 | 8.77 | 33.74 | 6.29 | 0.14 | 4.93 | 29.25 | 7.26 | 1.21 | -10.52 | 0.57 | -0.41 | 2.59 | 2.01 | | |
| 2015 1r | 3,772 | 3.84 | 1.67 | -4.96 | 34.73 | 6.01 | 0.11 | 2.86 | 29.56 | 7.19 | 1.69 | -1.80 | 0.50 | -2.60 | 2.87 | 0.43 | | |
| 2015 2p | 3,832 | 0.52 | 1.94 | 2.14 | 35.73 | -0.71 | 0.10 | -6.48 | 30.54 | -0.15 | 1.68 | -8.12 | 0.64 | -2.82 | 2.77 | -1.35 | | |

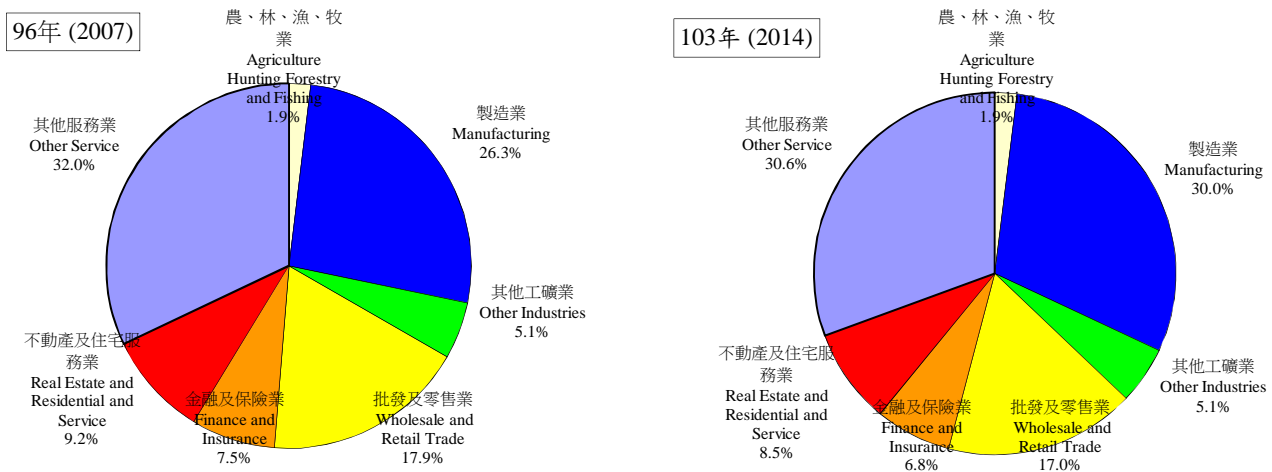
資料來源：行政院主計總處，「國民所得統計及國內經濟情勢展望」，2015年8月14日。

註：1. 以上所列為政府發佈資料，本院對GDP的預測列於本刊第一部份臺灣總體經濟預測。

2. 2014年第2季(含)以前歷年各季資料均已依5年修正結果追溯修正。

Source：Directorate General of Budget, Accounting and Statistics, Executive Yuan, R.O.C..

表二：各業產值概況
Table 2. GDP Components by Industry
GDP各產業產值及成長率
GDP Products Value & Growth Rate



註：本圖型因未加上進口稅、加值型營業稅及減掉設算銀行服務費，所佔百分比與下表佔GDP百分比有些微差異。

Note: Import duties, Value added taxes and imputed bank services charge are not included; therefore the percentage is different from the table.

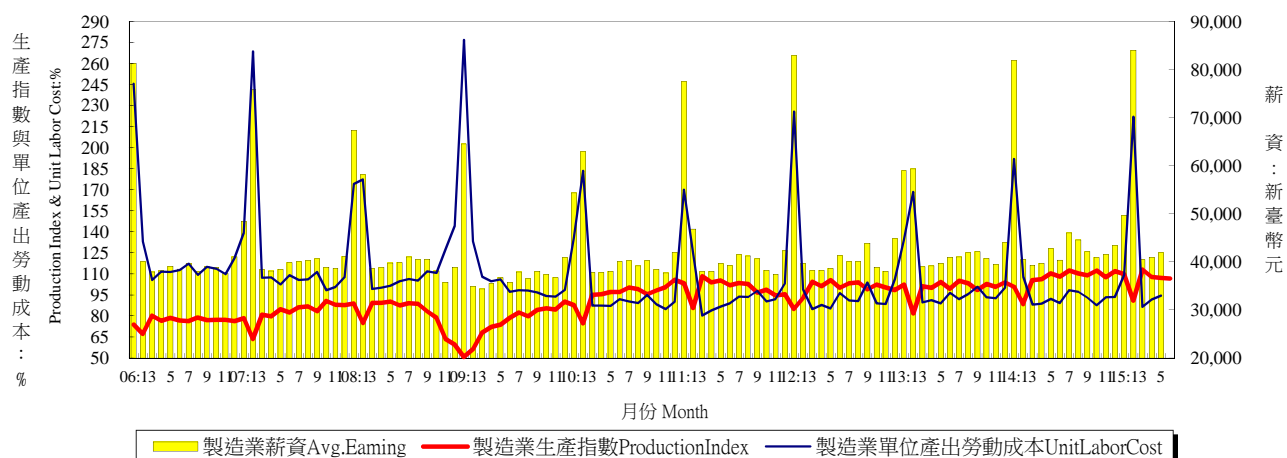
| 年與季 Year & Quarter | 產業 Sector | | | | | | | | | | | | | | | |
|--------------------------|-----------------|---|---|---|---|--|---|------------------------------------|---|--|---|--|---|----------------------|---|---------------------|
| | 服務業 Services | | | | | | | | | | | | | | | |
| | 合計 Sub-Total | 批發及零售業 Wholesale and Retail Trade | | 運輸及 倉儲業 Transportation and Storage | | 資訊及通訊傳播 業 Information and Communication | | 金融及保險業 Finance and Insurance | | 不動產及住宅服 務業 Real Estate and Residential and Service | | 公共行政 及國防；強制性社會安全 Public Administration and Defence; Compulsory Social Security | | 其他 Other Services | | |
| | | 估GDP /GDP (%) | 年增率 Annual Rate of Change (%) | 估GDP /GDP (%) | 年增率 Annual Rate of Change (%) | 估GDP /GDP (%) | 年增率 Annual Rate of Change (%) | 估GDP /GDP (%) | 年增率 Annual Rate of Change (%) | 估GDP /GDP (%) | 年增率 Annual Rate of Change (%) | 估GDP /GDP (%) | 年增率 Annual Rate of Change (%) | 估GDP /GDP (%) | 年增率 Annual Rate of Change (%) | 估GDP /GDP (%) |
| 2007 | 64.51 | -- | 16.68 | -- | 3.01 | -- | 3.21 | -- | 7.13 | -- | 8.43 | -- | 7.16 | -- | 18.90 | -- |
| 2008 | 66.36 | 0.75 | 17.30 | 2.25 | 2.92 | 0.31 | 3.34 | 4.73 | 7.01 | -3.66 | 8.67 | 0.52 | 7.60 | 0.97 | 19.52 | 0.50 |
| 2009 | 66.33 | -0.69 | 17.02 | -1.91 | 2.79 | -3.40 | 3.44 | 4.30 | 6.23 | -7.17 | 9.07 | 1.95 | 7.76 | 0.82 | 20.02 | 0.51 |
| 2010 | 64.41 | 5.80 | 16.67 | 6.44 | 3.01 | 6.99 | 3.26 | 9.02 | 6.19 | 7.33 | 8.50 | 3.18 | 7.35 | 3.10 | 19.42 | 6.27 |
| 2011 | 65.27 | 3.02 | 17.07 | 4.02 | 2.78 | 2.84 | 3.23 | 4.26 | 6.39 | 4.04 | 8.47 | 1.10 | 7.37 | 0.03 | 19.96 | 3.59 |
| 2012 | 65.58 | 1.27 | 16.88 | 1.10 | 2.87 | 1.83 | 3.18 | 3.05 | 6.42 | 1.09 | 8.55 | 1.81 | 7.41 | 0.70 | 20.27 | 1.10 |
| 2013 | 65.10 | 2.20 | 16.92 | 1.44 | 2.81 | 8.12 | 3.07 | 2.93 | 6.45 | 3.80 | 8.52 | 2.54 | 7.05 | -0.78 | 20.28 | 2.35 |
| 2014r | 64.03 | 2.28 | 16.48 | 2.64 | 2.88 | 2.10 | 2.92 | 1.36 | 6.61 | 6.62 | 8.25 | 0.72 | 6.79 | 0.03 | 20.10 | 2.20 |
| 2011 1 | 64.89 | 5.33 | 16.53 | 8.02 | 2.82 | 2.50 | 3.04 | 5.61 | 6.10 | 6.19 | 8.27 | 3.08 | 8.26 | 1.01 | 19.87 | 5.58 |
| 2 | 64.54 | 3.09 | 16.99 | 4.36 | 2.61 | 1.77 | 3.13 | 1.60 | 6.90 | 5.88 | 8.54 | 1.13 | 6.97 | -0.27 | 19.41 | 3.53 |
| 3 | 64.75 | 2.73 | 16.58 | 3.83 | 2.78 | 3.51 | 3.32 | 5.84 | 6.57 | 4.94 | 8.14 | 0.50 | 7.36 | -1.56 | 19.99 | 3.12 |
| 4 | 66.86 | 1.09 | 18.20 | 0.27 | 2.92 | 3.57 | 3.42 | 3.92 | 6.02 | -0.89 | 8.92 | -0.16 | 6.86 | 1.12 | 20.53 | 2.31 |
| 2012 1 | 67.13 | 0.85 | 16.83 | 0.33 | 2.88 | 2.24 | 3.13 | 5.01 | 6.38 | 2.55 | 8.28 | -1.95 | 8.77 | 2.37 | 20.86 | 0.66 |
| 2 | 65.21 | 1.52 | 16.82 | 1.03 | 2.70 | 1.37 | 3.11 | 4.51 | 6.92 | 0.51 | 8.66 | 2.36 | 7.13 | 1.41 | 19.86 | 1.54 |
| 3 | 63.74 | 1.02 | 15.98 | 0.64 | 2.92 | 2.20 | 3.21 | 1.92 | 6.37 | -0.96 | 8.18 | 2.97 | 7.11 | -1.38 | 19.97 | 1.80 |
| 4 | 66.29 | 1.68 | 17.89 | 2.32 | 2.97 | 1.50 | 3.27 | 1.08 | 6.04 | 2.51 | 9.08 | 3.75 | 6.66 | 0.50 | 20.39 | 0.42 |
| 2013 1 | 66.80 | 1.98 | 16.87 | 1.54 | 2.80 | 6.62 | 3.04 | 2.17 | 6.28 | 0.73 | 8.45 | 4.22 | 8.47 | -0.08 | 20.88 | 1.96 |
| 2 | 64.51 | 1.86 | 16.67 | 0.30 | 2.63 | 8.38 | 3.04 | 3.83 | 7.00 | 4.59 | 8.64 | 2.86 | 6.86 | -0.19 | 19.68 | 1.37 |
| 3 | 63.24 | 1.63 | 16.05 | 0.34 | 2.86 | 7.49 | 3.08 | 2.22 | 6.40 | 3.92 | 8.08 | 1.17 | 6.69 | -1.59 | 20.09 | 2.31 |
| 4 | 65.89 | 3.29 | 18.06 | 3.38 | 2.92 | 9.93 | 3.14 | 3.52 | 6.14 | 5.93 | 8.91 | 1.99 | 6.24 | -1.28 | 20.48 | 3.68 |
| 2014 1 | 65.89 | 2.06 | 16.44 | 1.96 | 2.79 | 2.69 | 2.94 | 2.00 | 6.45 | 6.80 | 8.24 | 0.54 | 8.27 | -0.10 | 20.76 | 1.96 |
| 2 | 63.36 | 2.71 | 16.31 | 4.07 | 2.58 | 3.90 | 2.88 | 1.73 | 7.19 | 6.85 | 8.37 | 0.90 | 6.53 | -0.42 | 19.50 | 2.03 |
| 3 | 62.49 | 2.75 | 15.62 | 2.88 | 2.91 | 1.43 | 2.88 | 0.29 | 6.87 | 11.40 | 7.81 | 0.55 | 6.45 | 0.21 | 19.94 | 2.28 |
| 4r | 64.44 | 1.66 | 17.51 | 1.78 | 3.22 | 0.52 | 2.96 | 1.50 | 5.95 | 1.18 | 8.59 | 0.86 | 6.00 | 0.44 | 20.21 | 2.48 |
| 2015 1r | 63.60 | 1.26 | 15.68 | 1.34 | 3.41 | 2.72 | 2.72 | 1.01 | 6.26 | 3.21 | 7.84 | 1.00 | 7.69 | 0.21 | 20.00 | 0.89 |
| 2p | 62.33 | 0.40 | 15.68 | -1.53 | 3.02 | 0.83 | 2.72 | 1.75 | 7.26 | 4.74 | 8.23 | 1.11 | 6.26 | 0.68 | 19.16 | -0.23 |

資料來源：行政院主計總處，「國民所得統計及國內經濟情勢展望」，2015年8月14日。

- 註：1. 其他包含住宿及餐飲業、專業、科學及技術服務業、支援服務業、教育服務業、醫療保健及社會工作服務業、藝術、娛樂及休閒服務業、其他服務業、進口稅及加值型營業稅。
2. 2014年第2季(含)以前歷年各季資料均已依5年修正結果追溯修正。
3. 2014年11月起主計總處由定基法改以連鎖法衡量經濟成長率。

Source: Directorate General of Budget, Accounting and Statistics, Executive Yuan, R.O.C..

表三：生產概況
Table3.IndustryIndicators

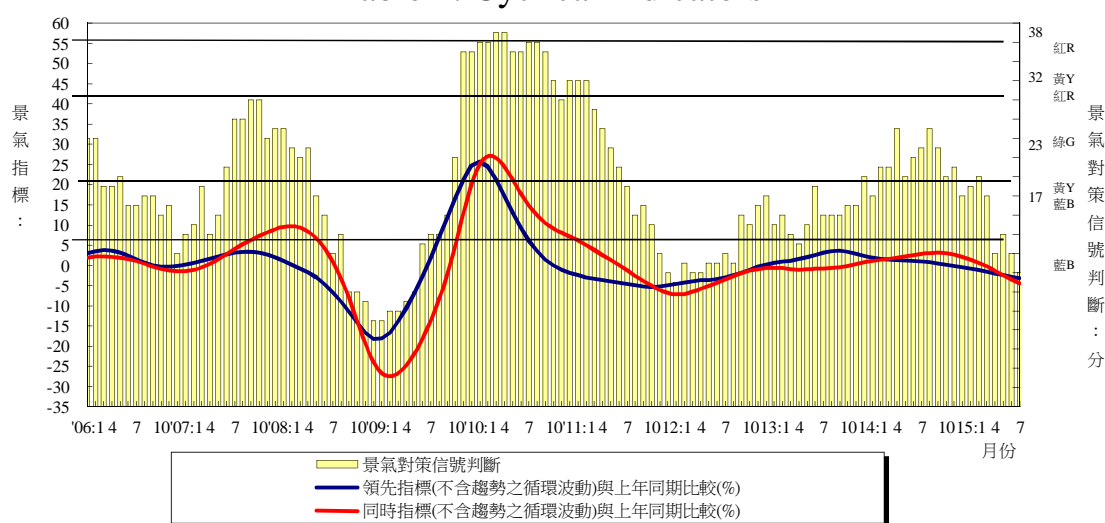


| 年 與 月 Year & Month | 製造業生產 (基期100年=100) Mfg. Industrial Production (2011=100) | | 製造業重工業生產 (基期100年=100) Heavy Industry Production (2011=100) | | 製造業輕工業生產 (基期100年=100) Light Industry Production (2011=100) | | 製造業單位產出勞動成本 (基期100年=100) Unit labor cost in Manufacturing (2011=100) | | 製造業薪資 Average Earnings of Employees in Manufacturing | | |
|-----------------------------------|---|--|---|--|---|--|---|--|--|--|--------|
| | 指數 Index (%) | 年增率 Annual Rate of Change (%) | 指數 Index (%) | 年增率 Annual Rate of Change (%) | 指數 Index (%) | 年增率 Annual Rate of Change (%) | 指數 Index (%) | 年增率 Annual Rate of Change (%) | 每人每月 (元) Wages per Month (NT\$) | 年增率 Annual Rate of Change (%) | |
| 2000 | 59.20 | 7.85 | - | - | - | - | 144.75 | -2.37 | 38,914 | 3.12 | |
| 2001 | 53.86 | -9.02 | - | - | - | - | 149.85 | 3.52 | 38,412 | -1.29 | |
| 2002 | 58.67 | 8.93 | - | - | - | - | 135.84 | -9.35 | 38,435 | 0.06 | |
| 2003 | 64.27 | 9.54 | - | - | - | - | 130.53 | -3.91 | 39,549 | 2.90 | |
| 2004 | 70.68 | 9.97 | - | - | - | - | 126.56 | -3.04 | 40,657 | 2.80 | |
| 2005 | 72.94 | 3.20 | - | - | - | - | 127.30 | 0.58 | 41,858 | 2.95 | |
| 2006 | 76.30 | 4.61 | - | - | - | - | 124.89 | -1.89 | 42,393 | 1.28 | |
| 2007 | 82.66 | 8.34 | 79.17 | 10.39 | 101.84 | -0.49 | 118.64 | -5.00 | 43,178 | 1.85 | |
| 2008 | 81.92 | -0.90 | 79.14 | -0.04 | 96.83 | -4.92 | 120.42 | 1.50 | 43,121 | -0.13 | |
| 2009 | 75.53 | -7.80 | 72.92 | -7.86 | 89.57 | -7.50 | 111.31 | -7.57 | 39,125 | -9.27 | |
| 2010 | 95.52 | 26.47 | 94.76 | 29.95 | 99.60 | 11.20 | 98.84 | -11.20 | 42,300 | 8.12 | |
| 2011 | 100.00 | 4.69 | 100.00 | 5.53 | 100.00 | 0.40 | 100.00 | 1.17 | 43,316 | 2.40 | |
| 2012 | 99.68 | -0.32 | 99.70 | -0.30 | 99.57 | -0.43 | 102.25 | 2.25 | 43,689 | 0.86 | |
| 2013 | 100.24 | 0.56 | 100.52 | 0.82 | 98.71 | -0.86 | 102.53 | 0.27 | 43,829 | 0.32 | |
| 2014 | 106.89 | 6.63 | 108.14 | 7.58 | 100.19 | 1.50 | 101.09 | -1.40 | 45,207 | 3.14 | |
| 2014 | 7 | 112.46 | 6.95 | 113.68 | 7.70 | 105.90 | 2.83 | 98.42 | 7.12 | 46,031 | 12.21 |
| | 8 | 110.37 | 7.02 | 111.77 | 7.84 | 102.82 | 2.45 | 97.21 | 1.63 | 44,542 | 6.41 |
| | 9 | 108.83 | 10.59 | 110.84 | 11.99 | 98.02 | 2.71 | 93.04 | -7.65 | 42,057 | -0.14 |
| | 10 | 112.32 | 9.22 | 113.81 | 10.72 | 104.36 | 1.21 | 87.62 | -6.04 | 40,854 | 0.45 |
| | 11 | 107.51 | 6.85 | 109.29 | 8.36 | 97.88 | -1.49 | 93.31 | 0.80 | 41,579 | 5.38 |
| | 12 | 111.94 | 7.76 | 112.65 | 8.25 | 108.10 | 5.01 | 93.61 | -6.56 | 43,422 | -1.39 |
| 2015 | 1 | 109.94 | 9.08 | 111.18 | 10.67 | 103.24 | 0.67 | 109.25 | -43.06 | 49,705 | -39.31 |
| | 2 | 91.01 | 2.89 | 93.55 | 3.89 | 77.35 | -3.14 | 222.15 | 105.66 | 84,071 | 108.06 |
| | 3 | 113.05 | 7.17 | 114.87 | 8.00 | 103.32 | 2.48 | 86.39 | -1.94 | 40,444 | 2.99 |
| | 4 | 107.74 | 1.48 | 109.01 | 1.83 | 100.89 | -0.58 | 91.60 | 3.30 | 40,928 | 3.17 |
| | 5 | 107.19 | -2.84 | 109.04 | -2.51 | 97.24 | -4.73 | 94.43 | 2.44 | 41,918 | -1.93 |
| | 6 | 107.02 | -0.93 | 108.56 | -1.14 | 98.72 | 0.29 | 95.88 | 7.60 | 42,468 | 5.16 |
| | 7 | 108.96 | -3.11 | 110.15 | -3.11 | 102.54 | -3.17 | - | - | - | - |
| | 1-當月 | 106.42 | 1.80 | 108.05 | 2.31 | 97.61 | -1.13 | 113.60 | 4.38 | 49,900 | 5.35 |

資料來源：經濟部統計處，「104年7月工業生產統計」；行政院主計總處，「104年6月薪資與生產力統計結果」。

Source : Department of Statistics, MOEA, "Industrial Production Indexes in July 2015";
DGBAS, "Earnings and Productivity Statistics in June 2015".

表四：景氣概況
Table 4. Cyclical Indicators



| 年與月 | 景氣指標 | | | | 景氣對策信號判斷 (分) | | | 失業率 (%) |
|---------|----------|-----------------|----------|-----------------|--------------|----|----|---------|
| | 領先指標綜合指數 | 領先指標循環波動 (不含趨勢) | 同時指標綜合指數 | 同時指標循環波動 (不含趨勢) | | | | |
| 2000平均 | 62.11 | 104.97 | 63.62 | 107.50 | 綠 | G | 26 | 2.99 |
| 2001平均 | 55.07 | 91.85 | 57.38 | 95.71 | 藍 | B | 10 | 4.57 |
| 2002平均 | 61.96 | 100.13 | 61.04 | 98.61 | 綠 | G | 23 | 5.17 |
| 2003平均 | 65.41 | 99.19 | 65.15 | 98.82 | 綠 | G | 23 | 4.99 |
| 2004平均 | 72.91 | 102.74 | 72.61 | 102.29 | 黃紅 | YR | 33 | 4.44 |
| 2005平均 | 75.08 | 99.06 | 75.84 | 100.07 | 黃藍 | YB | 22 | 4.13 |
| 2006平均 | 80.24 | 100.77 | 80.30 | 100.85 | 黃藍 | YB | 22 | 3.91 |
| 2007平均 | 84.39 | 102.96 | 85.54 | 104.34 | 綠 | G | 25 | 3.91 |
| 2008平均 | 78.96 | 95.61 | 84.51 | 102.34 | 黃藍 | YB | 19 | 4.14 |
| 2009平均 | 81.35 | 95.95 | 75.99 | 89.62 | 黃藍 | YB | 19 | 5.85 |
| 2010平均 | 95.03 | 104.76 | 94.74 | 104.38 | 黃紅 | YR | 37 | 5.21 |
| 2011平均 | 97.15 | 100.34 | 100.43 | 103.74 | 綠 | G | 24 | 4.39 |
| 2012平均 | 98.31 | 97.65 | 100.32 | 99.64 | 黃藍 | YB | 17 | 4.24 |
| 2013平均 | 103.23 | 99.91 | 102.44 | 99.15 | 黃藍 | YB | 20 | 4.18 |
| 2014平均 | 106.68 | 100.79 | 107.35 | 101.42 | 綠 | G | 25 | 3.96 |
| 2014 6 | 106.69 | 100.89 | 107.40 | 101.56 | 綠 | G | 26 | 3.92 |
| 2014 7 | 106.88 | 100.87 | 107.95 | 101.87 | 綠 | G | 27 | 4.02 |
| 2014 8 | 107.04 | 100.82 | 108.42 | 102.13 | 綠 | G | 29 | 4.08 |
| 2014 9 | 107.16 | 100.75 | 108.77 | 102.27 | 綠 | G | 27 | 3.96 |
| 2014 10 | 107.25 | 100.65 | 109.00 | 102.29 | 綠 | G | 24 | 3.95 |
| 2014 11 | 107.32 | 100.53 | 109.09 | 102.19 | 綠 | G | 25 | 3.89 |
| 2014 12 | 107.32 | 100.36 | 108.96 | 101.89 | 黃藍 | YB | 22 | 3.79 |
| 2015 1 | 107.23 | 100.10 | 108.67 | 101.44 | 綠 | G | 23 | 3.71 |
| 2015 2 | 107.05 | 99.76 | 108.28 | 100.90 | 綠 | G | 24 | 3.69 |
| 2015 3 | 106.80 | 99.36 | 107.76 | 100.25 | 黃藍 | YB | 22 | 3.72 |
| 2015 4 | 106.51 | 98.92 | 107.14 | 99.51 | 藍 | B | 16 | 3.63 |
| 2015 5 | 106.26 | 98.52 | 106.50 | 98.75 | 黃藍 | YB | 18 | 3.62 |
| 2015 6 | 105.98 | 98.10 | 105.90 | 98.03 | 藍 | B | 16 | 3.71 |
| 2015 7 | 105.67 | 97.66 | 105.35 | 97.35 | 藍 | B | 14 | 3.82 |

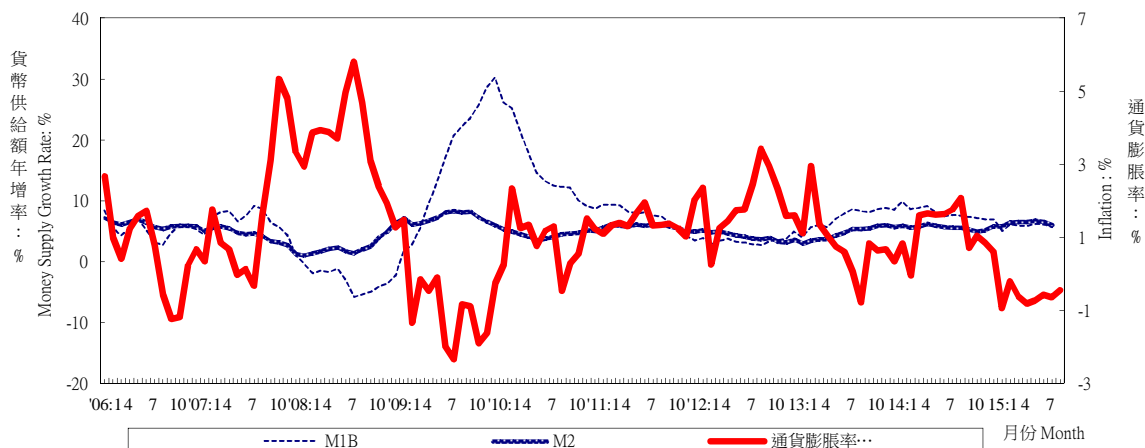
資料來源：國家發展委員會，「104年6月份景氣概況」；主計總處。

Source : National Development Council, "Taiwan Business Indicators in June 2015"; DGBAS.

表五：物價與金融概況

Table 5. Prices and Financial Situation

貨幣供給額與通貨膨脹率 Money Supply Growth Rate and Inflation



| 年與月 Year & Month | 躉售物價 (基期100年=100) Wholesale Prices (2011=100) | | 消費者物價 (基期100年=100) Consumer Prices (2011=100) | | 貨幣供給額年增率 Money Supply (Annual Growth Rate) | | |
|---------------------|--|--|--|--|--|------------|-----------|
| | 指數 Index (%) | 年增率 Annual Rate of Change (%) | 指數 Index (%) | 年增率 Annual Rate of Change (%) | M1A (%) | M1B (%) | M2 (%) |
| 2000 | 77.32 | 1.82 | 89.82 | 1.25 | 7.36 | 10.58 | 7.04 |
| 2001 | 76.28 | -1.35 | 89.82 | 0.00 | -4.69 | -1.02 | 5.79 |
| 2002 | 76.32 | 0.05 | 89.64 | -0.20 | 8.59 | 17.01 | 3.55 |
| 2003 | 78.21 | 2.48 | 89.39 | -0.28 | 11.28 | 11.82 | 3.77 |
| 2004 | 83.71 | 7.03 | 90.83 | 1.61 | 21.10 | 18.98 | 7.45 |
| 2005 | 84.22 | 0.61 | 92.92 | 2.30 | 7.65 | 7.10 | 6.22 |
| 2006 | 88.96 | 5.63 | 93.48 | 0.60 | 5.72 | 5.30 | 6.22 |
| 2007 | 94.72 | 6.47 | 95.16 | 1.80 | 6.80 | 6.44 | 4.25 |
| 2008 | 99.59 | 5.14 | 98.51 | 3.52 | 0.97 | -2.94 | 2.67 |
| 2009 | 90.90 | -8.73 | 97.66 | -0.86 | 13.38 | 16.54 | 7.22 |
| 2010 | 95.86 | 5.46 | 98.60 | 0.96 | 14.51 | 14.93 | 4.53 |
| 2011 | 100.00 | 4.32 | 100.00 | 1.42 | 8.08 | 7.16 | 5.83 |
| 2012 | 98.84 | -1.16 | 101.93 | 1.93 | 3.55 | 3.45 | 4.17 |
| 2013 | 96.44 | -2.43 | 102.74 | 0.79 | 9.15 | 7.27 | 4.78 |
| 2014 | 95.95 | -0.51 | 103.97 | 1.20 | 9.27 | 7.98 | 5.67 |
| 2014 7 | 96.88 | 0.85 | 104.40 | 1.76 | 8.61 | 7.65 | 5.63 |
| 8 | 96.49 | 0.03 | 104.85 | 2.07 | 9.16 | 7.56 | 5.64 |
| 9 | 95.66 | -0.85 | 104.80 | 0.71 | 9.24 | 7.36 | 5.31 |
| 10 | 94.48 | -1.38 | 104.87 | 1.05 | 9.71 | 7.18 | 4.98 |
| 11 | 92.94 | -2.90 | 103.92 | 0.85 | 8.65 | 6.95 | 5.22 |
| 12 | 91.68 | -4.78 | 103.56 | 0.60 | 7.62 | 6.90 | 5.85 |
| 2015 1 | 89.41 | -7.87 | 102.29 | -0.94 | 4.61 | 5.03 | 5.86 |
| 2 | 88.91 | -8.82 | 102.65 | -0.20 | 7.09 | 6.12 | 6.51 |
| 3 | 88.81 | -8.82 | 102.41 | -0.62 | 6.23 | 5.87 | 6.57 |
| 4 | 87.96 | -9.12 | 102.89 | -0.82 | 5.97 | 5.85 | 6.53 |
| 5 | 87.52 | -9.67 | 103.14 | -0.73 | 5.94 | 6.18 | 6.81 |
| 6 | 87.79 | -9.46 | 103.84 | -0.56 | 6.81 | 6.09 | 6.53 |
| 7 | 86.97 | -10.23 | 103.73 | -0.64 | 6.34 | 5.66 | 6.06 |
| 8 | 87.58 | -9.23 | 104.38 | -0.45 | - | - | - |
| 1-當月 | 88.12 | -9.15 | 103.17 | -0.62 | 6.14 | 5.83 | 6.41 |

資料來源：主計總處，「104年7月份物價變動概況」；中央銀行，「金融統計月報」。

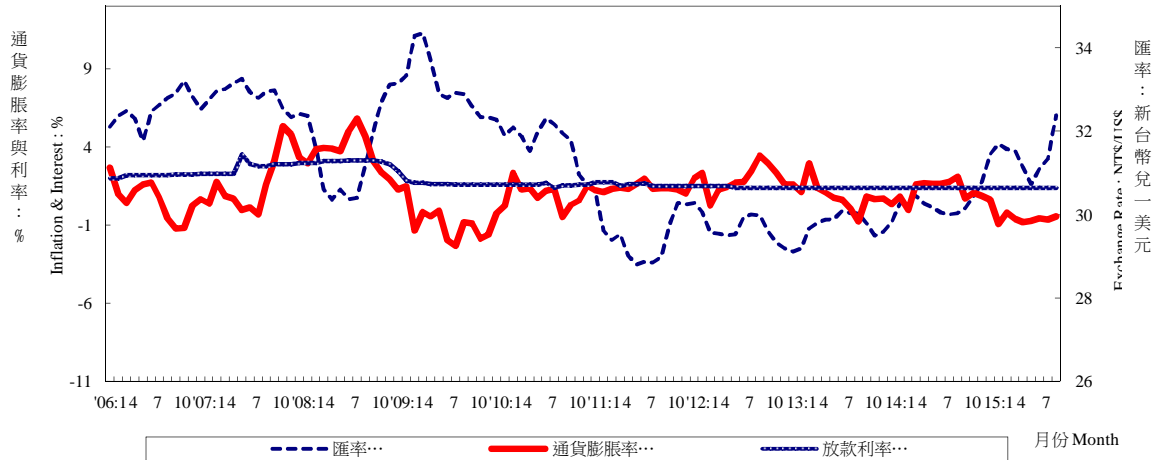
Source : Directorate General of Budget, Accounting and Statistics, Executive Yuan, R.O.C., "The Price Indices for July 2015";
Central Bank of Republic of China (Taiwan), "Financial Statistics Monthly, Republic of China (Taiwan)".

表五：物價與金融概況

Table 5. Prices and Financial Situation

利率、通貨膨脹率與匯率

Interest Rate, Exchange Rate and Inflation



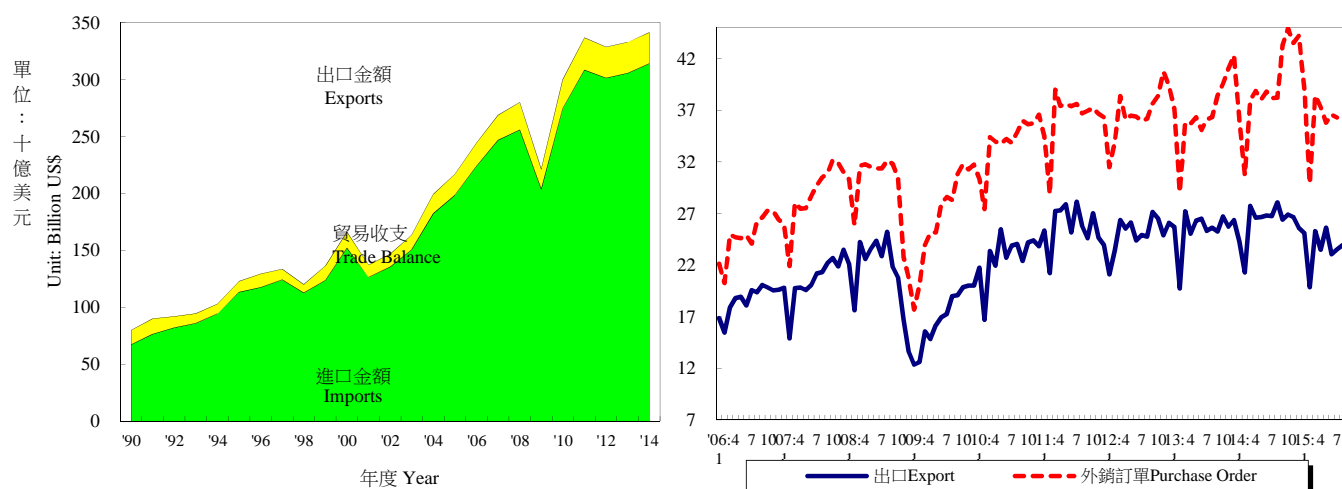
| 年與月 Year & Month | 存款 加權平均利率 Weighted Average Interest Rates on Deposits (%) | 基本放款利率 Short Term Loans (1 Year, Max) Interest Rate (%) | 商業本票 初級市場 180天利率 Commercial Paper Primary Mkt.(180d) Interest Rate (%) | 股票價格 Stock Prices | | 匯率 Exchange Rate | |
|---------------------|--|---|--|----------------------|--|-------------------------------------|------------------------------------|
| | | | | 指數 Index (%) | 年增率 Annual Rate of Change (%) | 新臺幣 兌一美元 NT\$ Against US\$ | 新臺幣 兌一日元 NT\$ Against Yen |
| 2000 | 4.62 | 7.86 | 5.62 | 7,847 | 5.66 | 31.23 | 0.2898 |
| 2001 | 4.09 | 7.78 | 4.17 | 4,907 | -37.46 | 33.80 | 0.2781 |
| 2002 | 1.83 | 7.46 | 2.75 | 5,247 | 6.91 | 34.58 | 0.2757 |
| 2003 | 1.11 | 7.10 | 1.80 | 5,144 | -1.96 | 34.42 | 0.2969 |
| 2004 | 1.08 | 7.07 | 1.61 | 6,033 | 17.30 | 33.42 | 0.3089 |
| 2005 | 1.34 | 7.32 | 2.00 | 6,090 | 0.94 | 32.17 | 0.2918 |
| 2006 | 1.61 | 7.53 | 2.19 | 6,842 | 12.35 | 32.53 | 0.2797 |
| 2007 | 1.90 | 7.93 | 2.74 | 8,489 | 24.08 | 32.84 | 0.2789 |
| 2008 | 1.98 | 8.15 | 3.03 | 7,065 | -16.78 | 31.52 | 0.3049 |
| 2009 | 0.39 | 6.51 | 1.65 | 6,393 | -9.51 | 33.05 | 0.3532 |
| 2010 | 0.56 | 6.21 | 1.60 | 7,931 | 24.05 | 31.64 | 0.3605 |
| 2011 | 0.83 | 6.36 | 1.59 | 8,186 | 3.22 | 29.46 | 0.3692 |
| 2012 | 0.88 | 6.49 | 1.47 | 7,476 | -8.68 | 29.61 | 0.3711 |
| 2013 | 0.88 | 6.45 | 1.45 | 8,085 | 8.15 | 29.77 | 0.3050 |
| 2014 | 0.88 | 6.45 | 1.45 | 8,977 | 11.48 | 30.37 | 0.2873 |
| 2014 7 | 0.88 | 6.45 | 1.44 | 9,474 | 16.94 | 30.00 | 0.2919 |
| 8 | 0.88 | 6.45 | 1.44 | 9,266 | 16.82 | 30.04 | 0.2917 |
| 9 | 0.88 | 6.45 | 1.44 | 9,229 | 12.64 | 30.15 | 0.2812 |
| 10 | 0.88 | 6.45 | 1.46 | 8,819 | 5.42 | 30.43 | 0.2816 |
| 11 | 0.88 | 6.45 | 1.46 | 9,016 | 9.46 | 30.79 | 0.2650 |
| 12 | 0.88 | 6.45 | 1.45 | 9,109 | 8.04 | 31.45 | 0.2636 |
| 2015 1 | 0.88 | 6.45 | 1.45 | 9,282 | 8.35 | 31.69 | 0.2678 |
| 2 | 0.88 | 6.45 | 1.45 | 9,506 | 11.88 | 31.57 | 0.2662 |
| 3 | 0.88 | 6.45 | 1.45 | 9,611 | 10.63 | 31.53 | 0.2619 |
| 4 | 0.88 | 6.45 | 1.45 | 9,680 | 8.76 | 31.13 | 0.2604 |
| 5 | 0.88 | 6.45 | 1.45 | 9,689 | 8.43 | 30.72 | 0.2545 |
| 6 | 0.88 | 6.45 | 1.45 | 9,355 | 1.37 | 31.11 | 0.2514 |
| 7 | 0.88 | 6.45 | 1.45 | 8,964 | -5.39 | 31.34 | 0.2543 |
| 8 | - | 6.45 | 1.40 | 8,156 | -11.98 | 32.39 | 0.2630 |
| 1-當月 | 0.88 | 6.45 | 1.44 | 9,280 | 3.75 | 31.43 | 0.2599 |

資料來源：中央銀行，「金融統計月報」；經濟日報；第一銀行；台灣證券交易所。

Source : Central Bank of Republic of China (Taiwan), "Financial Statistics Monthly, Republic of China (Taiwan)"; Economic Daily News; First Bank; Taiwan Stock Exchange Corporation.

表六：臺灣進出口貿易

Table 6. Foreign Trade Values



| 年與月 Year & Month | 海關進出口貿易額 Export & Import Values of Foreign Trade | | | | | 外銷訂單 Purchase Order for Exports | |
|---------------------|---|--|---|--|---------------------------------|---------------------------------------|--|
| | 出口金額 (百萬美元) Amount (Mil. US\$) | 年增率 Annual Rate of Change (%) | 進口金額 (百萬美元) Amount (Mil. US\$) | 年增率 Annual Rate of Change (%) | 貿易收支 (百萬美元) Trade Balance | 金額 (百萬美元) Amount (Mil. US\$) | 年增率 Annual Rate of Change (%) |
| 2000 | 151,950 | 22.80 | 140,732 | 26.56 | 11,218 | 153,424 | 20.36 |
| 2001 | 126,314 | -16.87 | 107,971 | -23.28 | 18,344 | 135,714 | -11.54 |
| 2002 | 135,317 | 7.13 | 113,245 | 4.89 | 22,072 | 150,952 | 11.23 |
| 2003 | 150,600 | 11.29 | 128,010 | 13.04 | 22,590 | 170,028 | 12.64 |
| 2004 | 182,370 | 21.10 | 168,758 | 31.83 | 13,613 | 215,087 | 26.50 |
| 2005 | 198,432 | 8.81 | 182,614 | 8.21 | 15,817 | 256,393 | 19.20 |
| 2006 | 224,017 | 12.89 | 202,698 | 11.00 | 21,319 | 299,313 | 16.74 |
| 2007 | 246,677 | 10.12 | 219,252 | 8.17 | 27,425 | 345,814 | 15.54 |
| 2008 | 255,629 | 3.63 | 240,448 | 9.67 | 15,181 | 351,723 | 1.71 |
| 2009 | 203,675 | -20.32 | 174,371 | -27.48 | 29,304 | 322,440 | -8.33 |
| 2010 | 274,601 | 34.82 | 251,236 | 44.08 | 23,364 | 406,720 | 26.14 |
| 2011 | 308,257 | 12.26 | 281,438 | 12.02 | 26,820 | 436,125 | 7.23 |
| 2012 | 301,181 | -2.30 | 270,473 | -3.90 | 30,708 | 441,007 | 1.12 |
| 2013 | 305,441 | 1.41 | 269,897 | -0.21 | 35,544 | 442,929 | 0.44 |
| 2014 | 313,696 | 2.70 | 274,026 | 1.53 | 39,670 | 472,814 | 6.75 |
| 2014 7 | 26,740 | 5.69 | 24,125 | 9.34 | 2,614 | 38,182 | 5.72 |
| 8 | 28,072 | 9.51 | 23,970 | 13.94 | 4,103 | 38,210 | 5.21 |
| 9 | 26,405 | 4.61 | 22,870 | -0.11 | 3,535 | 43,313 | 12.74 |
| 10 | 26,882 | 0.64 | 22,264 | -1.46 | 4,618 | 44,911 | 13.44 |
| 11 | 26,639 | 3.53 | 22,455 | 5.04 | 4,183 | 43,512 | 6.01 |
| 12 | 25,609 | -2.94 | 21,198 | -12.27 | 4,411 | 44,228 | 4.52 |
| 2015 1 | 25,108 | 3.37 | 20,325 | -4.73 | 4,783 | 39,038 | 8.11 |
| 2 | 19,863 | -6.65 | 15,298 | -22.38 | 4,565 | 29,890 | -2.66 |
| 3 | 25,269 | -8.90 | 21,206 | -17.74 | 4,063 | 38,427 | 1.28 |
| 4 | 23,488 | -11.68 | 18,737 | -22.09 | 4,751 | 37,318 | -3.99 |
| 5 | 25,630 | -3.84 | 20,211 | -5.43 | 5,419 | 35,793 | -5.85 |
| 6 | 23,057 | -13.95 | 20,883 | -16.13 | 2,174 | 36,582 | -5.76 |
| 7 | 23,520 | -12.04 | 19,913 | -17.46 | 3,608 | 36,287 | -4.96 |
| 8 | 23,927 | -14.77 | 19,970 | -16.69 | 3,957 | - | - |
| 1-當月 | 189,862 | -8.80 | 156,543 | -15.50 | 33,319 | 25,333 | -2.10 |

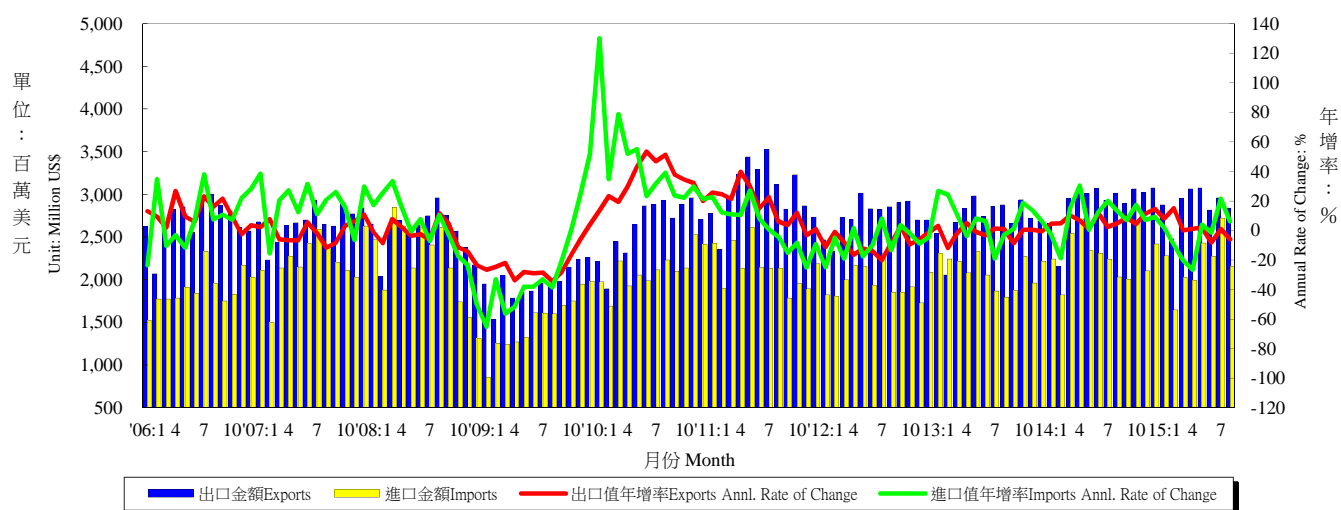
資料來源：財政部統計處，「104年7月海關進出口貿易統計速報」；經濟部統計處，「104年6月外銷訂單統計」。

Source : Department of Statistics, Ministry of Finance, "Summary of Exports and Imports for July, 2015";

Department of Statistics, MOEA, "Export Order in June 2015".

表七：臺灣對美國之進出口狀況

Table 7. Trade with the United States



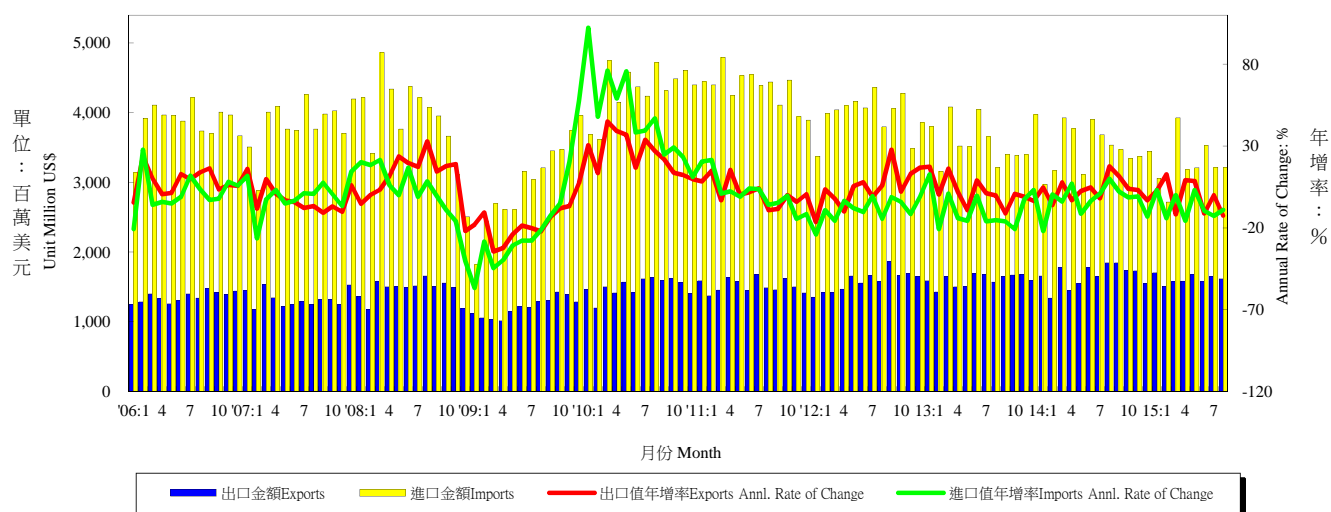
| 年與月 Year & Month | 出口值 Exports | | | 進口值 Imports | | | 出入超 Trade Balance | 貿易總額 Total Trade Amount | | |
|---------------------|---------------------------------------|-------------------------------------|---------------------------|---------------------------------------|-------------------------------------|---------------------------|---------------------------------------|---------------------------------------|-------------------------------------|--------|
| | 金額 (百萬美元) Amount (Mil. US\$) | 年增率 Annual rate of change (%) | 份額 Export share (%) | 金額 (百萬美元) Amount (Mil. US\$) | 年增率 Annual rate of change (%) | 份額 Export share (%) | 金額 (百萬美元) Amount (Mil. US\$) | 金額 (百萬美元) Amount (Mil. US\$) | 年增率 Annual rate of change (%) | |
| 2000 | 35,588 | 13.56 | 23.42 | 25,270 | 27.51 | 17.96 | 10,319 | 60,858 | 18.47 | |
| 2001 | 28,136 | -20.94 | 22.27 | 18,407 | -27.16 | 17.05 | 9,728 | 46,543 | -23.52 | |
| 2002 | 27,365 | -2.74 | 20.22 | 18,256 | -0.82 | 16.12 | 9,110 | 45,621 | -1.98 | |
| 2003 | 26,554 | -2.97 | 17.63 | 16,995 | -6.90 | 13.28 | 9,558 | 43,549 | -4.54 | |
| 2004 | 28,751 | 8.27 | 15.80 | 21,780 | 28.16 | 12.90 | 6,971 | 50,531 | 16.03 | |
| 2005 | 29,114 | 1.26 | 14.70 | 21,171 | -2.80 | 11.60 | 7,943 | 50,285 | -0.49 | |
| 2006 | 32,361 | 11.15 | 14.40 | 22,664 | 7.06 | 11.20 | 9,696 | 55,025 | 9.43 | |
| 2007 | 32,077 | -0.88 | 13.00 | 26,508 | 16.96 | 12.10 | 5,569 | 58,585 | 6.47 | |
| 2008 | 30,791 | -4.01 | 12.00 | 26,327 | -0.68 | 10.90 | 4,464 | 57,117 | -2.51 | |
| 2009 | 23,553 | -23.51 | 11.60 | 18,154 | -31.04 | 10.40 | 5,399 | 41,707 | -26.98 | |
| 2010 | 31,466 | 33.60 | 11.50 | 25,379 | 39.80 | 10.10 | 6,087 | 56,845 | 36.30 | |
| 2011 | 36,364 | 15.57 | 11.80 | 25,759 | 1.50 | 9.20 | 10,605 | 62,123 | 9.28 | |
| 2012 | 32,976 | -9.32 | 10.90 | 23,604 | -8.37 | 8.70 | 9,372 | 56,580 | -8.92 | |
| 2013 | 32,564 | -1.25 | 10.70 | 25,201 | 6.77 | 9.30 | 7,268 | 57,704 | 1.99 | |
| 2014 | 34,867 | 7.07 | 11.10 | 27,423 | 8.81 | 10.00 | 7,450 | 62,295 | 7.84 | |
| 2014 | 8 | 3,016 | 4.80 | 10.70 | 2,034 | 13.36 | 8.50 | 982 | 5,050 | 8.16 |
| | 9 | 2,890 | 8.78 | 10.90 | 2,001 | 7.03 | 8.70 | 890 | 4,891 | 8.08 |
| | 10 | 3,064 | 4.41 | 11.40 | 2,665 | 17.21 | 12.00 | 399 | 5,729 | 10.01 |
| | 11 | 3,021 | 11.35 | 11.30 | 2,102 | 7.28 | 9.40 | 919 | 5,124 | 9.61 |
| | 12 | 3,075 | 14.60 | 12.00 | 2,418 | 9.12 | 11.40 | 657 | 5,494 | 12.13 |
| 2015 | 1 | 2,875 | 8.12 | 11.45 | 2,279 | 1.71 | 11.21 | 596 | 5,154 | 5.16 |
| | 2 | 2,478 | 15.06 | 12.47 | 1,644 | -9.75 | 10.75 | 834 | 4,122 | 3.68 |
| | 3 | 2,951 | 0.04 | 11.68 | 2,025 | -20.36 | 9.55 | 926 | 4,977 | -9.41 |
| | 4 | 3,066 | 1.25 | 13.05 | 1,989 | -26.57 | 10.62 | 1,076 | 5,055 | -11.89 |
| | 5 | 3,073 | 2.04 | 11.99 | 2,429 | 3.89 | 12.02 | 644 | 5,503 | 2.85 |
| | 6 | 2,814 | -8.24 | 12.21 | 2,274 | -1.55 | 10.89 | 541 | 5,088 | -5.37 |
| | 7 | 2,957 | 0.93 | 12.57 | 2,721 | 21.54 | 13.67 | 236 | 5,678 | 9.86 |
| | 8 | 2,836 | -5.96 | 11.85 | 2,157 | 6.04 | 10.80 | 679 | 4,993 | -1.13 |
| | 1-當月 | 20,217 | 1.03 | 12.14 | 15,362 | -3.93 | 11.19 | 4,856 | 35,579 | -13.73 |

資料來源：財政部統計處，「104年7月海關進出口貿易統計速報」。

Source : Department of Statistics, Ministry of Finance, "Summary of Exports and Imports for July, 2015";

表八：臺灣對日本之進出口狀況

Table 8. Trade with Japan



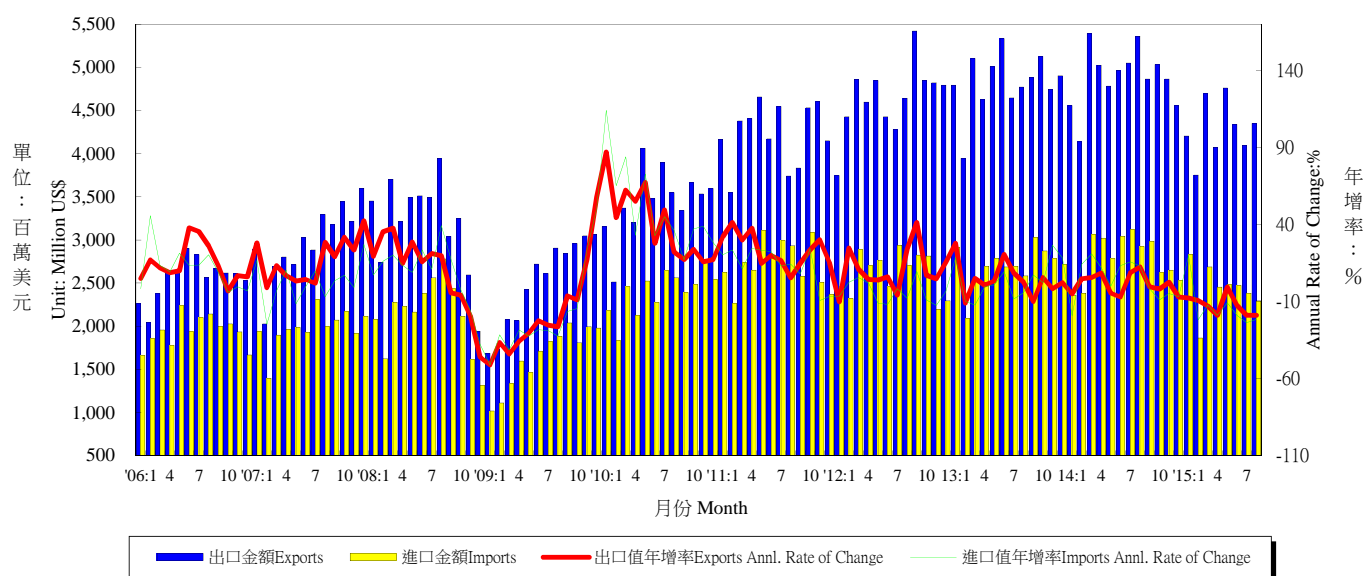
| 年與月 Year & Month | 出口值 Exports | | | 進口值 Imports | | | 出入超 Trade Balance | 貿易總額 Total Trade Amount | | |
|---------------------|---------------------------------------|-------------------------------------|---------------------------|---------------------------------------|-------------------------------------|---------------------------|---------------------------------------|---------------------------------------|-------------------------------------|--------|
| | 金額 (百萬美元) Amount (Mil. US\$) | 年增率 Annual rate of change (%) | 份額 Export share (%) | 金額 (百萬美元) Amount (Mil. US\$) | 年增率 Annual rate of change (%) | 份額 Export share (%) | 金額 (百萬美元) Amount (Mil. US\$) | 金額 (百萬美元) Amount (Mil. US\$) | 年增率 Annual rate of change (%) | |
| 2000 | 16,887 | 40.23 | 11.11 | 38,622 | 26.06 | 27.44 | -21,735 | 55,509 | 30.06 | |
| 2001 | 13,024 | -22.87 | 10.31 | 25,933 | -32.85 | 24.02 | -12,909 | 38,958 | -29.82 | |
| 2002 | 12,368 | -5.04 | 9.14 | 27,363 | 5.51 | 24.16 | -14,995 | 39,731 | 1.99 | |
| 2003 | 12,430 | 0.50 | 8.25 | 32,720 | 19.57 | 25.56 | -20,290 | 45,149 | 13.64 | |
| 2004 | 13,808 | 11.09 | 7.60 | 43,718 | 33.61 | 25.90 | -29,910 | 57,526 | 27.41 | |
| 2005 | 15,111 | 9.43 | 7.60 | 46,053 | 5.34 | 25.20 | -30,943 | 61,164 | 6.32 | |
| 2006 | 16,300 | 7.87 | 7.30 | 46,284 | 0.50 | 22.80 | -29,984 | 62,585 | 2.32 | |
| 2007 | 15,934 | -2.25 | 6.50 | 45,937 | -0.75 | 21.00 | -30,003 | 61,870 | -1.14 | |
| 2008 | 17,556 | 10.18 | 6.90 | 46,508 | 1.24 | 19.30 | -28,952 | 64,064 | 3.55 | |
| 2009 | 14,502 | -17.39 | 7.10 | 36,220 | -22.12 | 20.80 | -21,718 | 50,722 | -20.83 | |
| 2010 | 18,006 | 24.16 | 6.60 | 51,917 | 43.34 | 20.70 | -33,911 | 69,923 | 37.86 | |
| 2011 | 18,228 | 1.23 | 5.90 | 52,200 | 0.54 | 18.50 | -33,972 | 70,428 | 0.72 | |
| 2012 | 18,989 | 4.17 | 6.30 | 47,574 | -8.86 | 17.60 | -28,585 | 66,562 | -5.49 | |
| 2013 | 19,222 | 1.23 | 6.30 | 43,162 | -9.27 | 16.00 | -24,240 | 62,107 | -6.69 | |
| 2014 | 19,904 | 3.55 | 6.30 | 41,693 | -3.40 | 15.20 | -21,788 | 61,604 | -1.25 | |
| 2014 | 8 | 1,847 | 17.56 | 6.60 | 3,535 | 9.92 | 14.70 | -1,688 | 5,382 | 12.43 |
| | 9 | 1,846 | 11.59 | 7.00 | 3,473 | 2.06 | 15.20 | -1,627 | 5,319 | 5.18 |
| | 10 | 1,737 | 3.82 | 6.50 | 3,340 | -1.45 | 15.00 | -1,604 | 5,077 | 0.29 |
| | 11 | 1,730 | 3.02 | 6.50 | 3,372 | -0.78 | 15.00 | -1,643 | 5,102 | 0.48 |
| | 12 | 1,545 | -3.22 | 6.00 | 3,449 | -13.14 | 16.30 | -1,904 | 4,994 | -10.29 |
| 2015 | 1 | 1,704 | 2.67 | 6.79 | 3,057 | 3.00 | 15.04 | -1,353 | 4,761 | 2.89 |
| | 2 | 1,510 | 12.70 | 7.60 | 2,720 | -14.18 | 17.78 | -1,210 | 4,230 | -6.22 |
| | 3 | 1,573 | -11.72 | 6.23 | 3,926 | 0.05 | 18.51 | -2,353 | 5,499 | -3.62 |
| | 4 | 1,585 | 9.24 | 6.75 | 3,180 | -15.59 | 16.97 | -1,596 | 4,765 | -8.69 |
| | 5 | 1,677 | 8.57 | 6.54 | 3,209 | 3.11 | 15.88 | -1,531 | 4,886 | 4.92 |
| | 6 | 1,576 | -11.20 | 6.84 | 3,529 | -9.55 | 16.90 | -1,953 | 5,105 | -10.07 |
| | 7 | 1,648 | -0.06 | 7.01 | 3,212 | -12.78 | 16.13 | -1,564 | 4,859 | -8.84 |
| | 8 | 1,614 | -12.57 | 6.75 | 3,213 | -9.10 | 16.09 | -1,599 | 4,828 | -10.29 |
| | 1-當月 | 12,887 | -1.23 | 6.79 | 26,045 | -7.18 | 16.64 | -13,158 | 38,932 | -16.87 |

資料來源：財政部統計處，「104年7月海關進出口貿易統計速報」。

Source : Department of Statistics, Ministry of Finance, "Summary of Exports and Imports for July, 2015";

表九：臺灣對東協六國之進出口狀況

Table 9. Trade with ASEAN 6



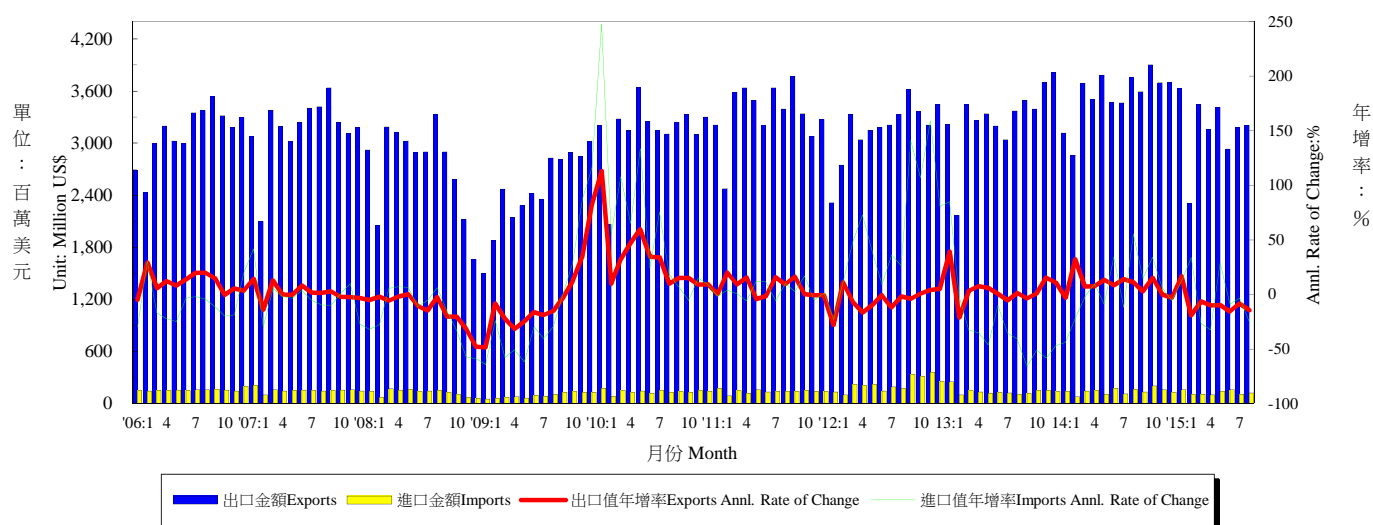
| 年與月 Year & Month | 出口值 Exports | | | 進口值 Imports | | | 出入超 Trade Balance | 貿易總額 Total Trade Amount | |
|---------------------|---------------------------------------|-------------------------------------|---------------------------|---------------------------------------|-------------------------------------|---------------------------|---------------------------------------|---------------------------------------|-------------------------------------|
| | 金額 (百萬美元) Amount (Mil. US\$) | 年增率 Annual rate of change (%) | 份額 Export share (%) | 金額 (百萬美元) Amount (Mil. US\$) | 年增率 Annual rate of change (%) | 份額 Export share (%) | 金額 (百萬美元) Amount (Mil. US\$) | 金額 (百萬美元) Amount (Mil. US\$) | 年增率 Annual rate of change (%) |
| 2000 | 18,534 | 28.80 | 12.20 | 20,263 | 39.79 | 14.40 | -1,729 | 38,797 | 34.32 |
| 2001 | 14,991 | -19.11 | 11.87 | 16,038 | -20.85 | 14.85 | -1,046 | 31,029 | -20.02 |
| 2002 | 16,098 | 7.40 | 11.90 | 16,629 | 3.70 | 14.70 | -531 | 32,727 | 5.47 |
| 2003 | 17,796 | 10.50 | 11.80 | 17,501 | 5.20 | 13.70 | 295 | 35,297 | 7.85 |
| 2004 | 23,667 | 33.00 | 13.00 | 20,328 | 16.20 | 12.00 | 3,339 | 43,994 | 24.64 |
| 2005 | 26,931 | 13.80 | 13.60 | 21,104 | 3.80 | 11.60 | 5,828 | 48,035 | 9.18 |
| 2006 | 30,651 | 13.80 | 13.70 | 23,304 | 10.40 | 11.50 | 7,347 | 53,955 | 12.32 |
| 2007 | 35,784 | 16.70 | 14.50 | 23,693 | 1.70 | 10.80 | 12,091 | 59,478 | 10.23 |
| 2008 | 38,389 | 7.30 | 15.00 | 25,582 | 8.00 | 10.60 | 12,807 | 63,971 | 7.55 |
| 2009 | 30,148 | -21.50 | 14.80 | 19,762 | -22.80 | 11.30 | 10,386 | 49,909 | -21.98 |
| 2010 | 41,358 | 37.20 | 15.10 | 28,783 | 45.60 | 11.50 | 12,575 | 70,141 | 40.54 |
| 2011 | 50,738 | 22.70 | 16.50 | 32,636 | 13.40 | 11.60 | 18,103 | 83,374 | 18.87 |
| 2012 | 55,713 | 9.80 | 18.50 | 31,364 | -3.90 | 11.60 | 24,349 | 87,077 | 4.44 |
| 2013 | 56,922 | 2.17 | 18.80 | 32,431 | 3.40 | 12.00 | 24,490 | 89,353 | 2.61 |
| 2014 | 58,637 | 1.29 | 18.70 | 33,508 | 3.45 | 12.20 | 25,129 | 92,145 | 2.07 |
| 2014 8 | 5,362 | 12.39 | 19.10 | 2,925 | 13.15 | 12.20 | 2,437 | 8,288 | 12.66 |
| 9 | 4,865 | -0.38 | 18.40 | 2,984 | -1.61 | 13.00 | 1,882 | 7,849 | -0.85 |
| 10 | 5,032 | -1.86 | 18.70 | 2,619 | -8.89 | 11.80 | 2,412 | 7,651 | -4.38 |
| 11 | 4,864 | 2.49 | 18.30 | 2,651 | -4.79 | 11.80 | 2,213 | 7,515 | -0.20 |
| 12 | 4,556 | -7.04 | 17.80 | 2,530 | -6.88 | 11.90 | 2,027 | 7,086 | -6.98 |
| 2015 1 | 4,206 | -7.67 | 16.80 | 2,830 | 20.03 | 13.90 | 1,376 | 7,036 | 1.76 |
| 2 | 3,751 | -9.36 | 18.90 | 1,862 | -21.88 | 12.20 | 1,889 | 5,613 | -13.93 |
| 3 | 4,693 | -12.95 | 18.60 | 2,687 | -12.30 | 12.70 | 2,007 | 7,380 | -12.71 |
| 4 | 4,077 | -18.86 | 17.40 | 2,454 | -18.79 | 13.10 | 1,622 | 6,531 | -18.84 |
| 5 | 4,760 | -0.51 | 18.60 | 2,482 | -10.86 | 12.30 | 2,278 | 7,243 | -4.32 |
| 6 | 4,339 | -12.53 | 18.80 | 2,470 | -18.82 | 11.80 | 1,869 | 6,810 | -14.92 |
| 7 | 4,097 | -18.89 | 17.40 | 2,382 | -23.72 | 12.00 | 1,715 | 6,479 | -20.74 |
| 8 | 4,349 | -18.90 | 18.20 | 2,294 | -21.60 | 11.50 | 2,055 | 6,643 | -19.84 |
| 1-當月 | 29,923 | -11.75 | 18.00 | 17,168 | -13.20 | 12.60 | 12,755 | 47,091 | -24.65 |

資料來源：財政部統計處，「104年7月海關進出口貿易統計速報」。

Source : Department of Statistics, Ministry of Finance, "Summary of Exports and Imports for July, 2015";

表十：臺灣對香港之進出口狀況

Table 10. Trade with Hong Kong

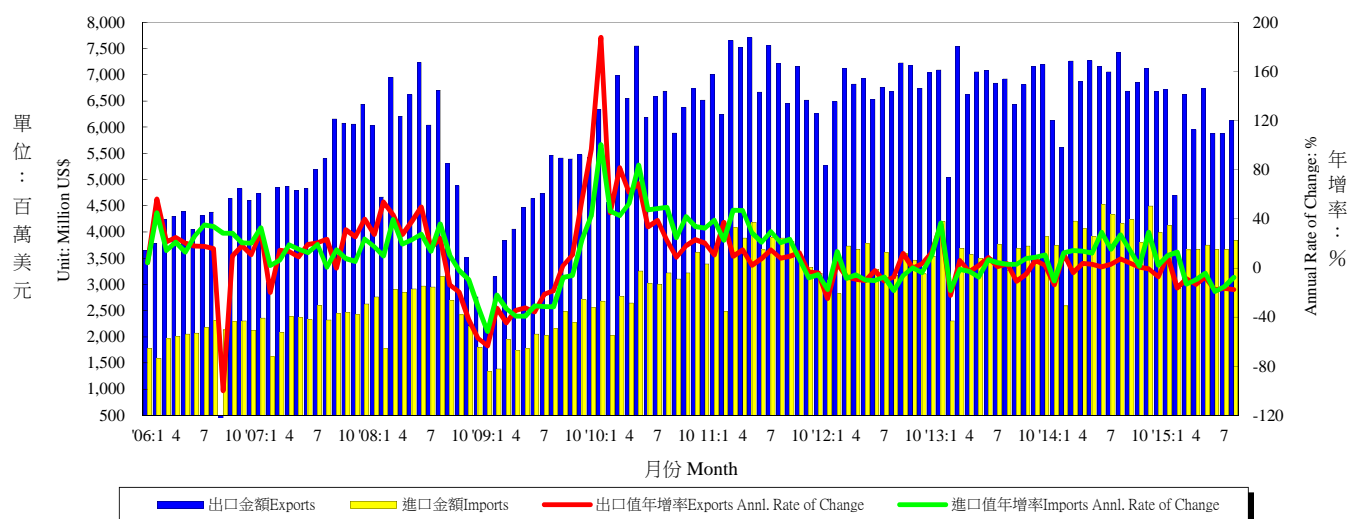


| 年與月 Year & Month | 出口值 Exports | | | 進口值 Imports | | | 出入超 Trade Balance | 貿易總額 Total Trade Amount | |
|---------------------|---------------------------------------|-------------------------------------|---------------------------|---------------------------------------|-------------------------------------|---------------------------|---------------------------------------|---------------------------------------|-------------------------------------|
| | 金額 (百萬美元) Amount (Mil. US\$) | 年增率 Annual rate of change (%) | 份額 Export share (%) | 金額 (百萬美元) Amount (Mil. US\$) | 年增率 Annual rate of change (%) | 份額 Export share (%) | 金額 (百萬美元) Amount (Mil. US\$) | 金額 (百萬美元) Amount (Mil. US\$) | 年增率 Annual rate of change (%) |
| 2000 | 32,742 | 22.06 | 21.55 | 2,364 | 6.32 | 1.68 | 30,378 | 35,106 | 11.50 |
| 2001 | 28,713 | -12.31 | 22.73 | 2,052 | -13.22 | 1.90 | 26,661 | 30,764 | -12.37 |
| 2002 | 32,960 | 14.79 | 24.36 | 1,915 | -6.66 | 1.69 | 31,045 | 34,875 | 13.36 |
| 2003 | 30,868 | -6.35 | 20.50 | 1,917 | 0.12 | 1.50 | 28,951 | 32,785 | -5.99 |
| 2004 | 32,896 | 6.57 | 18.04 | 2,309 | 20.44 | 1.37 | 30,587 | 35,205 | 7.38 |
| 2005 | 34,036 | 3.46 | 17.15 | 2,110 | -8.64 | 1.16 | 31,926 | 36,145 | 2.67 |
| 2006 | 37,381 | 9.83 | 16.69 | 1,881 | -10.86 | 0.93 | 35,501 | 39,262 | 8.62 |
| 2007 | 37,980 | 1.60 | 15.40 | 1,825 | -2.96 | 0.83 | 36,155 | 39,805 | 1.38 |
| 2008 | 32,690 | -13.93 | 12.79 | 1,493 | -18.20 | 0.62 | 31,197 | 34,183 | -14.12 |
| 2009 | 29,446 | -9.92 | 14.46 | 1,123 | -24.80 | 0.64 | 28,324 | 30,569 | -10.57 |
| 2010 | 37,807 | 28.39 | 13.77 | 1,628 | 44.99 | 0.65 | 36,179 | 39,435 | 29.00 |
| 2011 | 40,088 | 6.03 | 13.00 | 1,676 | 2.96 | 0.60 | 38,413 | 41,764 | 5.91 |
| 2012 | 37,937 | -5.36 | 12.60 | 2,659 | 58.70 | 0.98 | 35,278 | 40,596 | -2.80 |
| 2013 | 38,827 | 2.35 | 12.80 | 1,659 | -37.61 | 0.67 | 37,168 | 40,485 | -0.27 |
| 2014 | 42,541 | 9.57 | 13.56 | 1,685 | 1.57 | 0.61 | 40,856 | 44,226 | 9.24 |
| 2014 8 | 3,753 | 11.32 | 13.37 | 161 | 55.22 | 0.67 | 3,592 | 3,915 | 12.64 |
| 9 | 3,591 | 2.78 | 13.60 | 132 | 14.73 | 0.58 | 3,459 | 3,723 | 3.16 |
| 10 | 3,902 | 15.02 | 14.52 | 203 | 34.08 | 0.91 | 3,699 | 4,105 | 21.14 |
| 11 | 3,695 | -0.09 | 13.87 | 159 | 6.06 | 0.71 | 3,536 | 3,854 | 6.16 |
| 12 | 3,698 | -3.04 | 14.44 | 128 | -5.56 | 0.60 | 3,570 | 3,826 | 3.04 |
| 2015 1 | 3,628 | 16.49 | 14.45 | 158 | 12.70 | 0.78 | 3,471 | 3,786 | 16.32 |
| 2 | 2,310 | -19.30 | 11.63 | 103 | 33.78 | 0.67 | 2,208 | 2,413 | 0.08 |
| 3 | 3,448 | -6.64 | 13.64 | 107 | -26.36 | 0.51 | 3,341 | 3,555 | -2.78 |
| 4 | 3,156 | -9.96 | 13.44 | 99 | -32.54 | 0.53 | 3,056 | 3,255 | -4.94 |
| 5 | 3,411 | -9.84 | 13.31 | 139 | 28.70 | 0.69 | 3,272 | 3,550 | -5.79 |
| 6 | 2,931 | -15.55 | 12.71 | 160 | -8.71 | 0.77 | 2,770 | 3,091 | -7.41 |
| 7 | 3,178 | -8.27 | 13.51 | 105 | -3.49 | 0.53 | 3,073 | 3,283 | -7.51 |
| 8 | 3,206 | -14.58 | 13.40 | 121 | -25.00 | 0.61 | 3,085 | 3,327 | -21.72 |
| 1-當月 | 25,268 | -8.60 | 13.31 | 993 | -6.68 | 0.63 | 24,275 | 26,261 | -15.01 |

資料來源：財政部統計處，「104年7月海關進出口貿易統計速報」。

Source : Department of Statistics, Ministry of Finance, "Summary of Exports and Imports for July, 2015";

表十一：兩岸經貿
Table 11. Trade Across the Taiwan Straits



| 年與月 Year & Month | 臺灣對大陸之進出口狀況 Trade With China | | | | | | 出入超金額 Net Export Amount (Mil. US\$) | 匯率 人民幣兌 一美元 Exchange Rate (RMB/US\$) | 大陸 消費者物價 總指數 年增率 China's Consumer Price Index |
|---------------------|---------------------------------------|--|---------------------------|---------------------------------------|--|---------------------------|--|--|---|
| | 出口值 Exports | | | 進口值 Imports | | | | | |
| | 金額 (百萬美元) Amount (Mil. US\$) | 年增率 Annual rate of change (%) | 份額 Export share (%) | 金額 (百萬美元) Amount (Mil. US\$) | 年增率 Annual rate of change (%) | 份額 Export share (%) | | | |
| 2000 | 4,391 | 68.77 | 2.89 | 6,229 | 37.55 | 4.43 | -1,838 | 8.28 | 0.35 |
| 2001 | 4,895 | 11.47 | 3.88 | 5,903 | -5.24 | 5.47 | -1,008 | 8.28 | 0.73 |
| 2002 | 10,527 | 115.04 | 7.78 | 7,969 | 34.99 | 7.04 | 2,558 | 8.28 | -1.48 |
| 2003 | 22,891 | 117.45 | 15.20 | 11,018 | 38.27 | 8.61 | 11,873 | 8.28 | 1.95 |
| 2004 | 36,349 | 58.79 | 19.93 | 16,792 | 52.41 | 9.95 | 19,557 | 8.28 | 2.70 |
| 2005 | 43,644 | 20.07 | 21.99 | 20,094 | 19.66 | 11.00 | 23,550 | 8.19 | -2.01 |
| 2006 | 51,809 | 18.71 | 23.13 | 24,783 | 23.34 | 12.23 | 27,025 | 7.97 | -0.34 |
| 2007 | 62,417 | 20.48 | 25.30 | 28,015 | 13.04 | 12.78 | 34,402 | 7.61 | 3.25 |
| 2008 | 66,884 | 7.16 | 26.16 | 31,391 | 12.05 | 13.06 | 35,492 | 6.95 | 1.08 |
| 2009 | 54,249 | -18.89 | 26.63 | 24,423 | -22.20 | 14.01 | 29,825 | 6.83 | -6.22 |
| 2010 | 76,935 | 41.82 | 28.02 | 35,946 | 47.18 | 14.31 | 40,989 | 6.77 | 3.33 |
| 2011 | 83,965 | 9.14 | 27.24 | 43,607 | 21.31 | 15.49 | 40,358 | 6.46 | 5.41 |
| 2012 | 80,729 | -3.85 | 26.80 | 40,910 | -6.16 | 15.13 | 39,819 | 6.31 | 2.60 |
| 2013 | 81,644 | 1.13 | 26.93 | 42,593 | 4.11 | 17.32 | 39,051 | 6.19 | 2.62 |
| 2014 | 82,144 | 0.61 | 26.17 | 48,043 | 12.80 | 17.52 | 34,100 | 6.15 | 1.99 |
| 2014 8 | 7,426 | 7.38 | 26.45 | 4,156 | 27.00 | 17.34 | 3,270 | 6.16 | 2.00 |
| 9 | 6,689 | 3.96 | 25.33 | 4,233 | 14.78 | 18.51 | 2,455 | 6.15 | 1.60 |
| 10 | 6,856 | 0.67 | 25.50 | 3,789 | 1.58 | 17.02 | 3,067 | 6.14 | 1.60 |
| 11 | 7,116 | -0.52 | 26.71 | 4,494 | 29.14 | 20.01 | 2,623 | 6.14 | 1.40 |
| 12 | 6,680 | -7.17 | 26.09 | 3,995 | 2.29 | 18.85 | 2,685 | 6.12 | 1.50 |
| 2015 1 | 6,712 | 9.47 | 26.73 | 4,123 | 10.06 | 20.28 | 2,589 | 6.13 | 0.80 |
| 2 | 4,698 | -16.31 | 23.65 | 2,924 | 12.89 | 19.11 | 1,774 | 6.13 | 1.40 |
| 3 | 6,623 | -8.77 | 26.21 | 3,656 | -13.15 | 17.24 | 2,967 | 6.15 | 1.40 |
| 4 | 5,950 | -13.38 | 25.33 | 3,672 | -9.51 | 19.60 | 2,278 | 6.13 | 1.50 |
| 5 | 6,728 | -7.44 | 26.25 | 3,753 | -4.15 | 18.57 | 2,976 | 6.11 | 1.20 |
| 6 | 5,880 | -17.87 | 25.50 | 3,665 | -19.01 | 17.55 | 2,215 | 6.12 | 1.40 |
| 7 | 5,881 | -16.60 | 25.00 | 3,669 | -15.25 | 18.43 | 2,212 | 6.12 | 1.60 |
| 8 | 6,122 | -17.56 | 25.59 | 3,841 | -7.57 | 19.23 | 2,280 | 6.34 | 2.00 |
| 1-當月 | 48,593 | -11.29 | 25.59 | 29,302 | -7.06 | 18.72 | 19,291 | 6.15 | 1.41 |

資料來源：財政部統計處，「104年7月海關進出口貿易統計速報」；中央銀行，「金融統計月報」；中國統計局。

Source : Department of Statistics, Ministry of Finance, "Summary of Exports and Imports for July, 2015";

Central Bank of Republic of China (Taiwan), "Financial Statistics Monthly, Republic of China (Taiwan)".

National Bureau of Statistics of China, "Consumer Prices for July 2015".