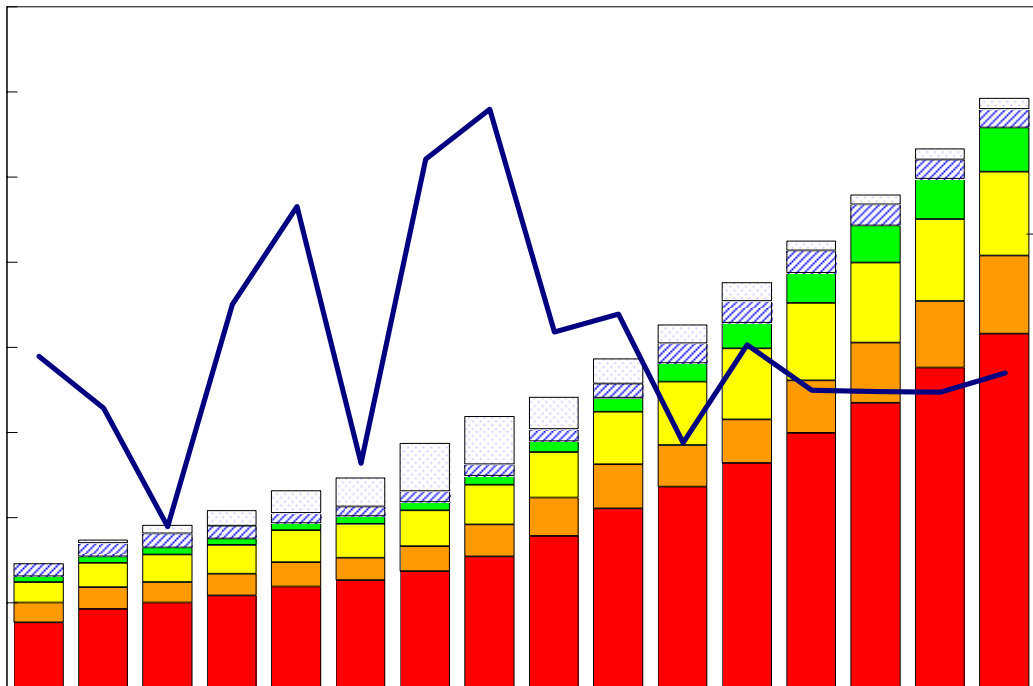


# 臺灣重要經濟變動指標

## Major Economic Indicators for Taiwan



中華經濟研究院

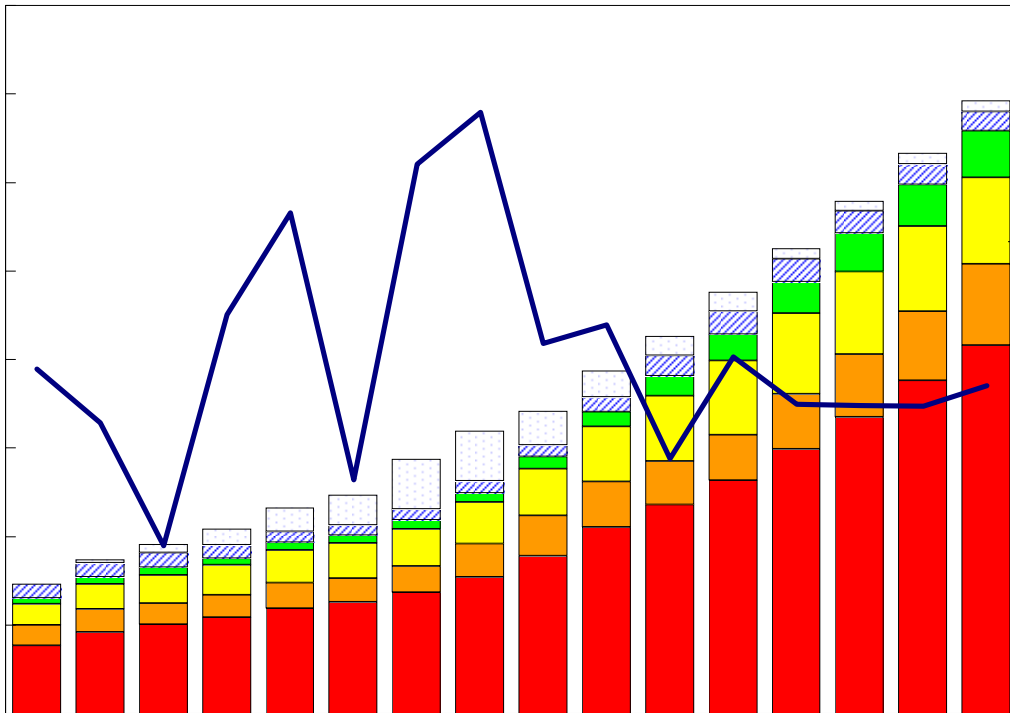
中華民國九十九年七月

Chung-Hua Institution for Economic Research

July 2010

# 臺灣重要經濟變動指標

## Major Economic Indicators for Taiwan



經濟展望中心 編製

The Center for Economic Forecasting

# 目次

# Index

臺灣經濟預測.....I	Taiwan's Macroeconomic Forecasts.....I
表一：主要總體經濟指標.....2-3	Table 1 : GDP Components by Expenditure.....2-3
表二：各業產值概況.....4-5	Table 2 : GDP Components by Industry.....4-5
表三：生產概況.....6	Table 3 : Industry Indicators.....6
表四：景氣概況.....7	Table 4 : Cyclical Indicators.....7
表五：物價與金融概況.....8-9	Table 5 : Prices and Financial Situation.....8-9
表六：臺灣進出口貿易.....10	Table 6 : Foreign Trade Values.....10
表七：臺灣對美國之進出口狀況.....11	Table 7 : Trade with the United States .....11
表八：臺灣對日本之進出口狀況.....12	Table 8 : Trade with Japan.....12
表九：臺灣對德國之進出口狀況.....13	Table 9 : Trade with Germany.....13
表十：臺灣對香港之進出口狀況.....14	Table 10 : Trade with Hong Kong .....14
表十一：兩岸經貿.....15	Table 11 : Trade across the Taiwan Straits.....15

## Taiwan's Macroeconomic Forecasts

	2010				2009年	2010	2011
	Year 2010 Quarterly				Annually		
	1	2	3	4			
	Q1	Q2	Q3	Q4	2009	2010	2011
<b>GDP, GNP , (2006 ) , GDP, GNP and Major Components, Billions of 2006 NT Dollars</b>							
<b>實質GDP, Real GDP</b>	3,147.49	3,272.52	3,439.38	3,606.69	12,826.68	13,466.09	14,045.12
年變動率, yoy(%)	9.27	6.55	4.01	1.08	-1.87	4.99	4.30
<b>實質GNP, Real GNP</b>	3,294.69	3,356.53	3,489.58	3,687.01	13,231.92	13,827.81	14,384.06
年變動率, yoy(%)	9.51	6.15	3.50	-0.08	-1.04	4.50	4.02
<b>每人平均GNP, per capita GNP<sup>[1]</sup></b>	4,567.98	4,495.68	4,657.02	5,055.35	16,998.57	18,776.03	19,897.82
年變動率, yoy(%)	14.78	11.64	9.20	6.95	-5.70	10.46	5.97
<b>民間消費, Private Consumption</b>	1,904.60	1,839.34	1,916.83	1,952.97	7,465.98	7,613.74	7,761.99
年變動率, yoy(%)	3.27	2.25	1.79	0.68	1.48	1.98	1.95
<b>固定資本形成, Total Fixed Investment</b>	536.94	571.62	630.01	648.33	2,151.14	2,386.90	2,516.90
年變動率, yoy(%)	21.34	15.78	6.83	3.70	-11.80	10.96	5.45
<b>民間投資, Private Fixed Investment</b>	418.27	424.14	466.17	432.12	1,515.79	1,740.71	1,858.08
年變動率, yoy(%)	27.27	21.42	8.16	6.21	-19.38	14.84	6.74
<b>財貨與服務之輸出, Exports, gds+serv</b>	2,306.92	2,657.66	2,578.56	2,511.16	8,327.04	10,054.30	10,869.00
年變動率, yoy(%)	37.87	33.48	15.62	3.24	-9.21	20.74	8.10
<b>財貨與服務之輸入, Imports, gds+serv</b>	1946.22	2218.32	2106.85	1954.71	6521.23	8226.09	8754.97
年變動率, yoy(%)	48.14	40.17	20.15	4.46	-13.73	26.14	6.43
<b>海關出口 (fob, 億美元), Merchandise Export(fob, US \$bn)</b>	618.06	698.02	697.68	630.27	2,036.76	2,644.04	3,006.87
年變動率, yoy(%)	52.54	45.54	26.11	5.27	-20.32	29.82	13.72
<b>海關進口 (cif, 億美元), Merchandise Import (cif, US \$bn)</b>	568.72	634.55	674.40	572.69	1743.79	2450.36	2794.46
年變動率, yoy(%)	78.29	55.14	38.27	8.45	-27.48	40.52	14.04
<b>GDP平減指數, GDP Deflator(2006=100)</b>	102.3	96.85	95.72	97.86	97.89	98.18	98.5
年變動率, yoy(%)	-1.26	-0.27	0.17	2.68	0.72	0.29	0.32
<b>躉售物價指數, Wholesale Price Index (2006=100)</b>	106.35	106.98	109.33	109.58	102.17	108.06	111.20
年變動率, yoy(%)	6.48	6.93	5.26	4.46	-8.73	5.76	2.90
<b>消費者物價指數, Consumer Price Index (2006=100)</b>	104.74	105.63	107.52	107.12	104.47	106.25	108.12
年變動率, yoy(%)	1.29	1.57	2.11	1.85	-0.87	1.71	1.76
<b>M2貨幣存量(日平均), Money Stock (M2)</b>	29,721.45	30,241.57	30,300.18	31,199.91	28,753.14	30,365.78	32,136.09
年變動率, yoy(%)	5.25	5.23	5.03	6.90	7.21	5.61	5.83
<b>臺幣兌美元匯率, Exchange Rate(NT\$/US\$)</b>	31.96	31.32	31.02	30.86	33.06	31.29	30.73
年變動率, yoy(%) <sup>[2]</sup>	5.97	5.46	5.41	4.50	-4.83	5.34	1.80
<b>商業本票利率, 31-90 day Commercial Paper Rate</b>	0.26	0.62	0.98	1.04	0.24	0.73	0.95
年變動率, yoy(%)	-18.19	272.83	376.47	329.15	-87.78	210.09	30.26
<b>失業率(%), Unemployment Rate(%)</b>	5.65	5.43	5.73	5.19	5.85	5.50	5.17

資料來源: 中華經濟研究院, 經濟展望中心, 2010年4月16日。

Source: CEF, CIER, Apr. 16, 2010.

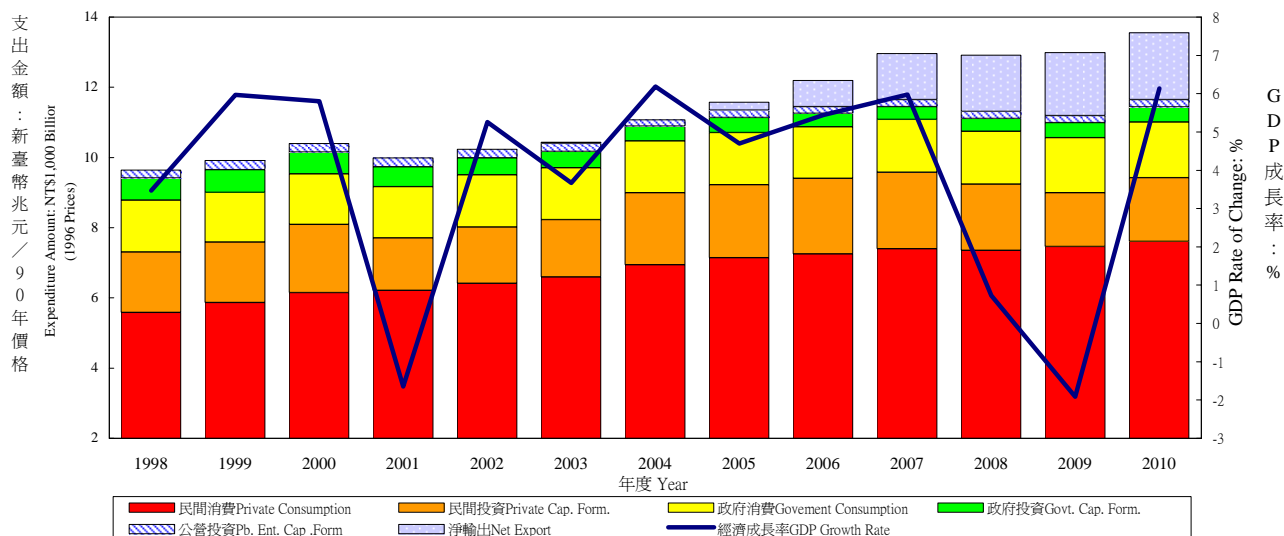
說明: [1]: 有關每人平均GNP在此以美元表示。

[2]: 有關匯率年增率(%), 正值表示升值, 負數表示貶值比率。

# 表一：主要總體經濟指標

## Table 1. GDP Components by Expenditure

### 實質GDP各需求支出及成長率 Real GDP Expenditure & Growth Rate



Year & Quarter	GDP Economic Growth Rate (%)	名目GDP (新台幣十億元) GDP (Bil.NT\$)	民間消費 Private Consumption Expenditure		民間固定投資 Private Spe. Gross Fixed Cap. Formation		商品及勞務輸出 Exports of Goods and Services		商品及勞務輸入 Imports of Goods and Services		政府消費 Government Consumption Expenditure	
			佔GDP /GDP (%)	年增率 Annual Rate of Change (%)	佔GDP /GDP (%)	年增率 Annual Rate of Change (%)	佔GDP /GDP (%)	年增率 Annual Rate of Change (%)	佔GDP /GDP (%)	年增率 Annual Rate of Change (%)	佔GDP /GDP (%)	年增率 Annual Rate of Change (%)
1998	3.47	9,204	58.14	6.31	17.16	11.54	47.37	1.88	46.33	7.36	14.82	3.61
1999	5.97	9,649	58.72	5.07	16.45	-0.15	47.28	12.27	44.77	4.13	13.80	-3.94
2000	5.80	10,187	58.78	4.75	17.66	13.19	52.93	18.31	50.76	15.34	13.38	1.21
2001	-1.65	9,930	60.70	0.98	13.64	-22.98	49.97	-8.60	44.52	-14.75	14.01	1.86
2002	5.26	10,412	59.91	3.26	13.81	7.12	52.22	11.37	45.03	6.21	13.57	1.55
2003	3.67	10,696	59.82	2.91	14.06	1.93	55.49	10.23	48.47	7.68	13.24	-1.23
2004	6.19	11,365	59.91	5.17	17.71	25.62	61.42	15.40	57.74	17.50	12.71	0.57
2005	4.70	11,740	60.40	2.90	17.21	1.53	62.53	7.78	58.12	3.16	12.46	0.19
2006	5.44	12,243	59.20	1.49	17.57	3.31	68.00	11.41	61.88	4.57	12.00	-0.71
2007	5.98	12,911	58.14	2.08	17.37	1.36	72.07	9.55	64.11	2.98	11.78	2.09
2008	0.73	12,699	60.06	-0.57	16.00	-13.78	72.66	0.56	67.71	-3.12	12.32	0.68
2009	-1.91	12,513	60.83	1.37	12.96	-18.38	62.55	-9.11	53.63	-13.44	12.86	3.65
2010	6.14	13,176	59.50	1.99	14.71	18.38	71.29	17.07	63.98	20.10	12.49	1.34
2008 4	-7.11	3,206	59.19	-2.18	12.70	-29.49	60.88	-17.93	54.34	-17.94	13.04	0.49
2009 1	-9.06	2,985	62.80	-1.96	11.79	-35.53	53.42	-26.87	43.42	-33.20	14.32	5.03
2	-6.85	2,983	61.56	-0.61	12.07	-30.75	61.92	-17.24	52.70	-19.25	11.90	2.91
3	-0.98	3,160	60.85	2.31	14.44	-12.02	67.15	-8.41	58.81	-12.27	12.57	3.64
4	9.06	3,386	58.41	5.83	13.41	13.15	66.86	19.54	58.63	15.88	12.69	3.24
2010 1	13.27	3,238	59.98	3.04	14.91	37.11	70.92	42.17	64.19	49.42	13.36	1.62
2	7.66	3,176	60.03	2.59	14.87	28.72	73.83	22.14	66.36	24.77	11.55	1.98
3	4.40	3,318	59.67	1.92	15.33	10.46	71.46	9.45	64.40	11.99	12.23	1.06
4	0.69	3,443	58.40	0.47	13.77	3.44	69.13	2.71	61.18	3.35	12.79	0.86

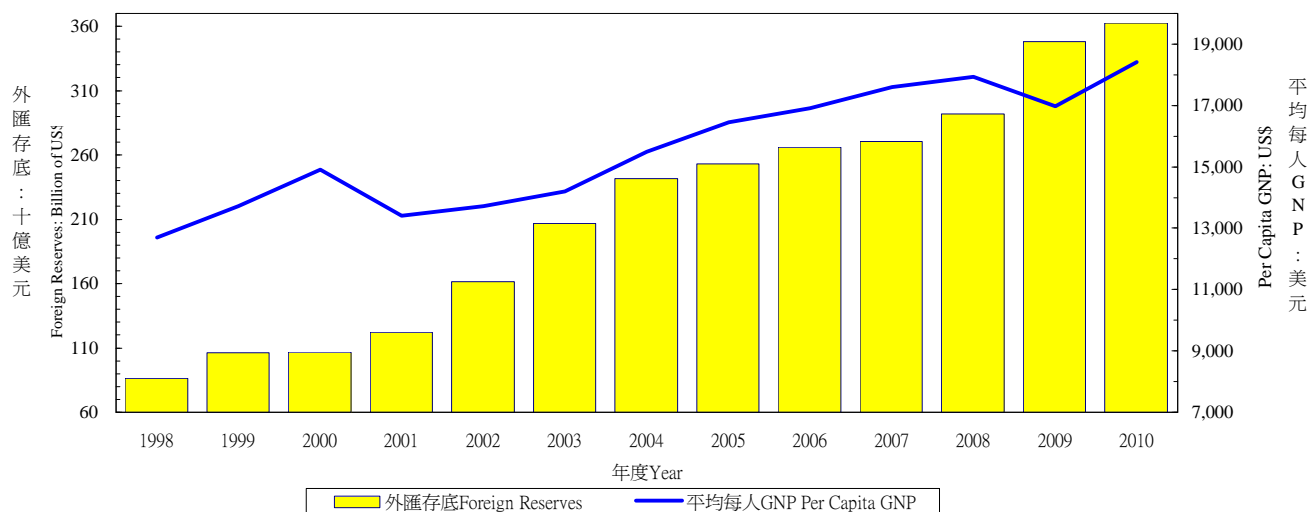
資料來源：行政院主計處，中華民國臺灣地區國民經濟動向統計季報，中央銀行經濟研究處，臺灣地區金融統計月報。

註：以上所列為政府發佈資料，本院對GDP的預測列於本刊第一部份臺灣總體經濟預測。

Source：DGBAS, Executive Yuan, "Quarterly National Economic Trends, Taiwan Area, ROC"

The Central Bank of China, Financial Statistics, Taiwan District, The Republic of China

## 外匯存底及平均每人GNP Total Foreign Reserves & Per Capita GNP



Year & Quarter	公營事業固定投資 Public Enter. Gross Fixed Capita Formation		政府固定投資 Government Gross Fixed Capita Formation		存貨增加 Increase in Stocks		國外要素淨收入 Net Factor Income From Abroad		平均每人 GNP (美元) Per Capita GNP (US\$)	外匯存底 (十億美元) Total Foreign Reserves (Billion of US\$)
	佔 GDP /GDP (%)	年增率 Annual Rate of Change (%)	佔 GDP /GDP (%)	年增率 Annual Rate of Change (%)	佔 GDP /GDP (%)	新台幣 百萬 (1996年價格) NT Mil (1996=100)	佔 GDP /GDP (%)	年增率 Annual Rate of Change (%)		
1998	2.43	3.72	5.43	-1.67	0.98	114,666	0.74	-24.87	12,692	86.6
1999	2.57	13.86	5.35	3.26	0.59	74,486	0.94	31.71	13,712	106.2
2000	2.32	-3.33	4.80	-4.17	0.90	107,491	1.37	52.36	14,906	106.7
2001	2.40	-0.06	4.44	-9.22	-0.64	-80,627	1.93	37.75	13,401	122.2
2002	2.21	-2.58	3.74	-13.18	-0.42	-59,812	2.33	26.51	13,716	161.7
2003	2.09	-4.70	3.65	-4.47	0.12	12,679	3.07	35.96	14,197	206.6
2004	1.63	-20.60	3.47	-9.59	0.88	104,189	3.27	11.46	15,503	241.7
2005	1.78	14.77	3.46	2.82	0.28	34,223	2.48	-23.31	16,449	253.3
2006	1.59	-8.61	3.14	-11.21	0.38	46,283	2.55	6.28	16,911	266.1
2007	1.57	1.57	3.07	-4.46	0.11	12,867	2.58	5.12	17,596	270.3
2008	1.64	-2.38	3.51	-0.39	1.52	151,821	2.48	-8.47	17,941	291.7
2009	1.78	4.04	3.97	18.62	-1.31	-164,825	3.34	33.17	16,969	348.2
2010	1.74	4.02	3.84	-0.70	0.41	58,165	2.91	-9.43	18,414	362.4
2008 4	2.24	-6.53	4.49	3.91	1.80	44,808	1.56	-34.79	4,284	291.7
2009 1	1.23	-28.33	3.17	13.72	-3.31	-105,376	4.44	-17.90	3,980	300.1
2009 2	1.58	5.77	3.86	22.42	-0.19	-5,945	3.17	90.99	4,027	317.6
2009 3	1.60	7.91	4.08	25.83	-1.86	-53,456	2.17	30.97	4,264	332.2
2009 4	2.63	23.01	4.66	13.59	-0.03	-48	3.60	146.36	4,698	348.2
2010 1	1.16	4.63	2.67	-8.88	1.19	42,660	4.81	15.98	4,592	355.0
2010 2	1.77	19.82	3.84	2.88	0.47	14,609	2.86	-5.32	4,456	362.4
2010 3	1.56	3.82	4.05	1.16	0.10	2,810	1.73	-17.24	4,586	--
2010 4	2.42	-4.64	4.73	-0.05	-0.06	-1,914	2.30	-36.37	4,780	--