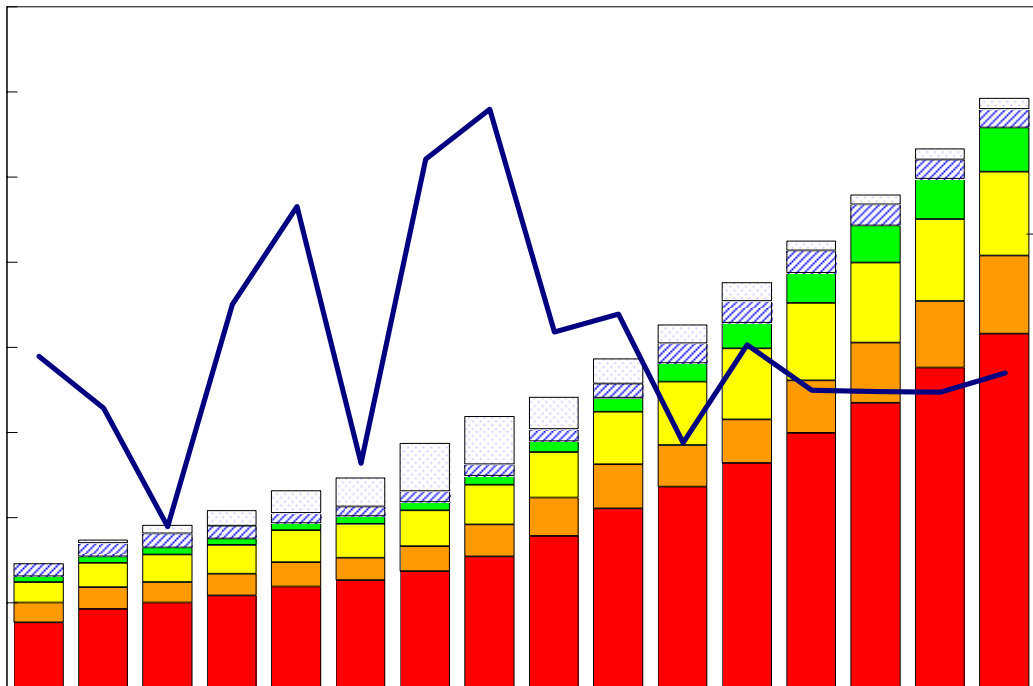


臺灣重要經濟變動指標

Major Economic Indicators for Taiwan



中華經濟研究院

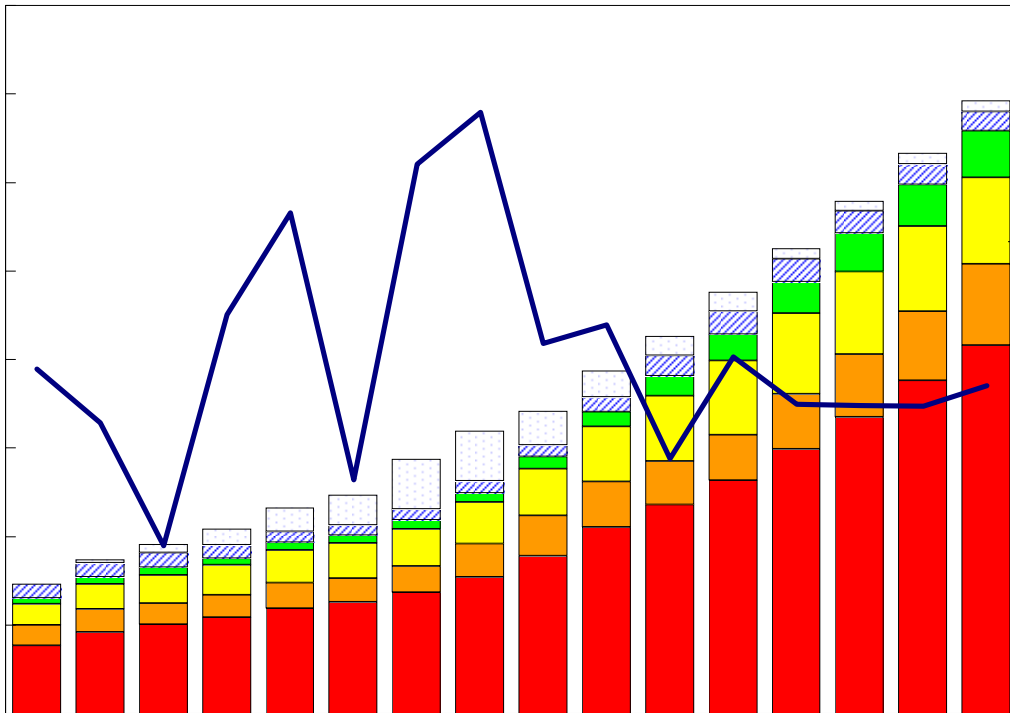
中華民國九十九年二月

Chung-Hua Institution for Economic Research

February 2010

臺灣重要經濟變動指標

Major Economic Indicators for Taiwan



經濟展望中心 編製

The Center for Economic Forecasting

目次

Index

臺灣經濟預測.....I	Taiwan's Macroeconomic Forecasts.....I
表一：主要總體經濟指標.....2-3	Table 1 : GDP Components by Expenditure.....2-3
表二：各業產值概況.....4-5	Table 2 : GDP Components by Industry.....4-5
表三：生產概況.....6	Table 3 : Industry Indicators.....6
表四：景氣概況.....7	Table 4 : Cyclical Indicators.....7
表五：物價與金融概況.....8-9	Table 5 : Prices and Financial Situation.....8-9
表六：臺灣進出口貿易.....10	Table 6 : Foreign Trade Values.....10
表七：臺灣對美國之進出口狀況.....11	Table 7 : Trade with the United States11
表八：臺灣對日本之進出口狀況.....12	Table 8 : Trade with Japan.....12
表九：臺灣對德國之進出口狀況.....13	Table 9 : Trade with Germany.....13
表十：臺灣對香港之進出口狀況.....14	Table 10 : Trade with Hong Kong14
表十一：兩岸經貿.....15	Table 11 : Trade across the Taiwan Straits.....15

臺灣經濟預測

Taiwan's Macroeconomic Forecasts

	2010年季預測				2008	2009年	2010年
	Year 2009 Quarterly				實際值	預測值	預測值
	第1季	第2季	第3季	第4季			
	Q1	Q2	Q3	Q4	2008	2009	2010
GDP, GNP及其組成, 新臺幣十億元(2001年基期), GDP, GNP and Major Components, Billions of 2001 NT Dollars							
實質GDP, Real GDP	3,119.23	3,246.40	3,430.66	3,479.48	13,070.90	12,684.62	13,275.77
年變動率, yoy(%)	8.29	5.70	4.08	1.25	0.73	-2.96	4.66
實質GNP, Real GNP	3,252.57	3,324.99	3,748.73	3,556.37	13,370.81	13,067.19	13,612.66
年變動率, yoy(%)	8.11	5.15	3.23	0.84	0.50	-2.27	4.17
每人平均GNP, per capita GNP^[1]	4,517.96	4,412.10	4,572.79	5,010.59	18,025.30	17,028.15	18,513.45
年變動率, yoy(%)	13.15	9.20	6.99	6.13	2.01	-5.53	8.72
民間消費, Private Consumption	1,877.69	1,827.81	1,905.64	1,897.81	7,357.07	7,394.20	7,508.94
年變動率, yoy(%)	1.81	1.61	1.30	1.50	-0.57	0.50	1.55
固定資本形成, Total Fixed Investment	483.24	529.09	620.87	637.39	2,439.03	2,151.15	2,270.60
年變動率, yoy(%)	9.20	7.17	6.37	0.98	-11.17	-11.80	5.55
民間投資, Private Fixed Investment	366.38	386.02	460.27	418.07	1,880.20	1,503.39	1,630.74
年變動率, yoy(%)	11.48	10.51	8.38	4.32	-13.78	-20.04	8.47
財貨與服務之輸出, Exports, gds+serv	2,062.88	2,254.44	2,364.49	2,359.38	9,172.14	8,163.49	9,041.19
年變動率, yoy(%)	23.29	13.23	6.14	3.87	0.56	-11.00	10.75
財貨與服務之輸入, Imports, gds+serv	1673.62	1796.89	1873.65	1860.38	7559.29	6428.69	7204.53
年變動率, yoy(%)	27.39	13.54	7.26	4.19	-3.12	-14.96	12.07
其它總體經濟變數, Other Macroeconomic Variables							
海關出口(fob, 億美元), Merchandise Export(fob, US \$bn)*	494.47	566.79	616.18	650.01	2556.29	2032.3	2327.45
年變動率, yoy(%)	22.03	18.18	11.35	9.41	3.63	-20.5	14.52
海關進口(cif, 億美元), Merchandise Import (cif, US \$bn)*	407.86	483.6	541.32	577.72	2404.48	1742.29	2010.49
年變動率, yoy(%)	27.25	18.18	10.91	10.14	9.67	-27.54	15.39
GDP平減指數, GDP Deflator (2001=100)	102.41	97.02	95.83	101.64	97.19	98.72	99.23
年變動率, yoy(%)	-1.16	-0.09	0.41	2.94	-2.39	1.57	0.51
躉售物價指數, Wholesale Price Index (2006=100)	102.85	104.13	107.50	106.45	111.95	101.90	105.23
年變動率, yoy(%)	2.97	4.08	3.50	2.53	5.15	-8.97	3.27
消費者物價指數, Consumer Price Index (2006=100)	103.67	105.24	106.86	106.77	105.39	104.51	105.64
年變動率, yoy(%)	0.26	1.19	1.48	1.36	3.53	-0.83	1.07
M2貨幣存量(日平均), Money Stock (M2)	30,017.95	30,332.75	30,431.59	31,734.50	26,820.14	28,846.09	30,629.20
年變動率, yoy(%)	6.30	5.54	5.49	7.37	2.67	7.55	6.18
臺幣兌美元匯率, Exchange Rate(NT\$/US\$)	32.00	31.75	31.63	31.26	31.53	33.00	31.66
年變動率, yoy(%) ^[3]	5.83	4.16	3.56	2.62	3.98	-4.65	4.07
商業本票利率, 31-90 day Commercial Paper Rate	0.82	0.87	0.93	0.98	1.92	0.32	0.90
年變動率, yoy(%)	155.02	420.24	348.56	67.61	0.96	-83.36	181.01
失業率(%), Unemployment Rate(%)	5.81	5.76	5.91	5.74	4.14	5.86	5.80

資料來源: 中華經濟研究院, 經濟展望中心, 2009年12月15日。

Source: CEF, CIER, Dec. 15, 2009.

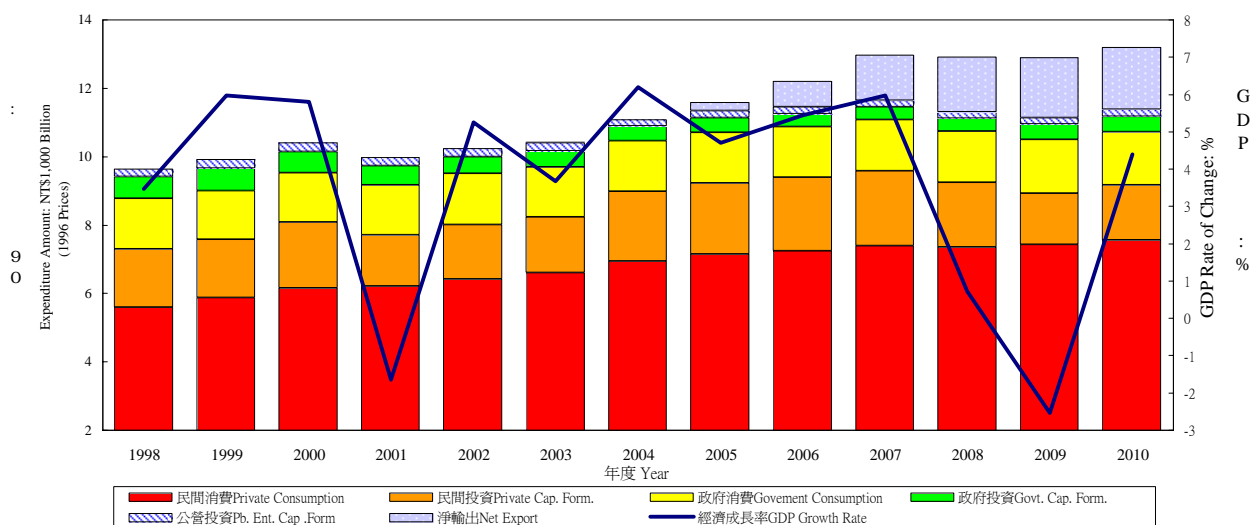
說明: *有關每人平均GNP在此以美元表示。

**有關匯率變動百分比, 正值表示升值, 負數表示貶值比率。

表一：主要總體經濟指標

Table 1. GDP Components by Expenditure

實質GDP各需求支出及成長率 Real GDP Expenditure & Growth Rate



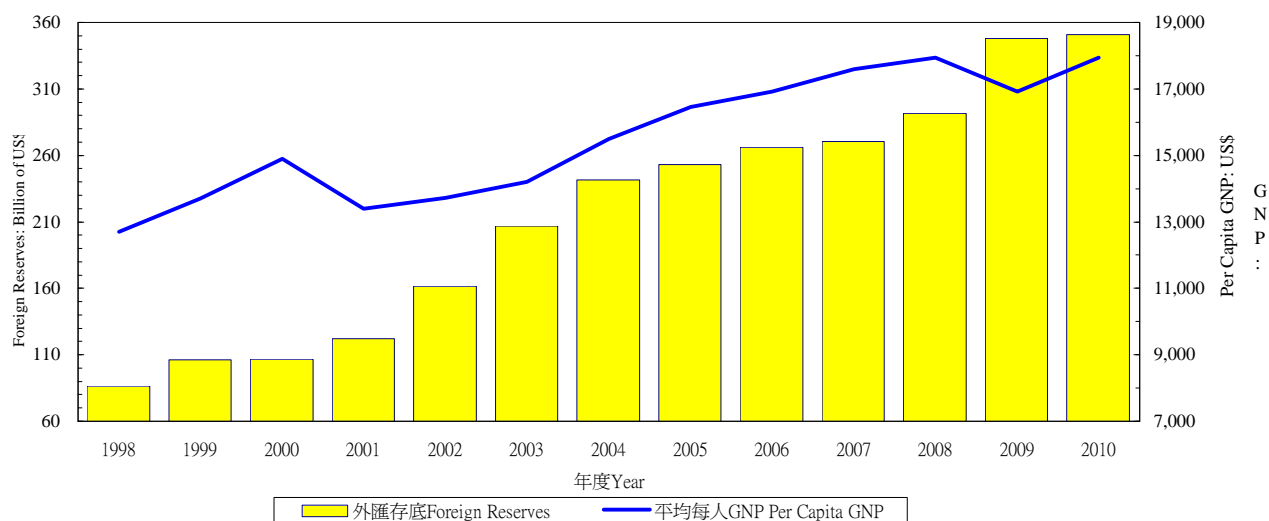
年與季 Year & Quarter	GDP 經濟 成長率 Economic Growth Rate (%)	名目GDP (新台幣 十億元) GDP (Bil.NT\$)	民間消費 Private Consumption Expenditure		民間固定投資 Private Spe. Gross Fixed Cap. Formation		商品及勞務輸出 Exports of Goods and Services		商品及勞務輸入 Imports of Goods and Services		政府消費 Government Consumption Expenditure	
			佔 GDP /GDP (%)	年增率 Annual Rate of Change (%)	佔 GDP /GDP (%)	年增率 Annual Rate of Change (%)	佔 GDP /GDP (%)	年增率 Annual Rate of Change (%)	佔 GDP /GDP (%)	年增率 Annual Rate of Change (%)	佔 GDP /GDP (%)	年增率 Annual Rate of Change (%)
1998	3.47	9,204	58.14	6.31	17.16	11.54	47.37	1.88	46.33	7.36	14.82	3.61
1999	5.97	9,649	58.72	5.07	16.45	-0.15	47.28	12.27	44.77	4.13	13.80	-3.94
2000	5.80	10,187	58.78	4.75	17.66	13.19	52.93	18.31	50.76	15.34	13.38	1.21
2001	-1.65	9,930	60.70	0.98	13.64	-22.98	49.97	-8.60	44.52	-14.75	14.01	1.86
2002	5.26	10,412	59.91	3.26	13.81	7.12	52.22	11.37	45.03	6.21	13.57	1.55
2003	3.67	10,696	59.82	2.91	14.06	1.93	55.49	10.23	48.47	7.68	13.24	-1.23
2004	6.19	11,365	59.91	5.17	17.71	25.62	61.42	15.40	57.74	17.50	12.71	0.57
2005	4.70	11,740	60.40	2.90	17.21	1.53	62.53	7.78	58.12	3.16	12.46	0.19
2006	5.44	12,243	59.20	1.49	17.57	3.31	68.00	11.41	61.88	4.57	12.00	-0.71
2007	5.98	12,911	58.14	2.08	17.37	1.36	72.07	9.55	64.11	2.98	11.78	2.09
2008	0.73	12,699	60.06	-0.57	16.00	-13.78	72.66	0.56	67.71	-3.12	12.32	0.68
2009	-2.53	12,483	60.88	0.86	12.77	-19.56	62.37	-10.34	53.58	-14.42	12.87	3.37
2010	4.39	13,021	59.88	1.77	13.20	6.85	67.12	9.49	58.91	10.88	12.34	0.18
2008 4	-7.11	3,206	59.19	-2.18	12.70	-29.49	60.88	-17.93	54.34	-17.94	13.04	0.49
2009 1	-9.06	2,985	62.80	-1.96	11.79	-35.53	53.42	-26.87	43.42	-33.20	14.32	5.03
2	-6.85	2,983	61.56	-0.61	12.07	-30.75	61.92	-17.24	52.70	-19.25	11.90	2.91
3	-1.29	3,146	61.12	2.21	14.23	-13.31	67.44	-8.52	59.08	-12.61	12.62	3.64
4	6.89	3,371	58.35	3.86	12.90	8.94	65.96	14.15	58.23	11.75	12.69	2.26
2010 1	8.96	3,173	60.86	2.09	12.19	11.55	63.87	24.45	55.38	27.81	13.24	-1.27
2	5.16	3,130	60.19	1.69	12.66	7.79	68.63	11.88	59.78	12.37	11.36	0.44
3	3.23	3,276	59.79	1.52	14.59	4.95	68.97	4.38	61.12	6.01	12.03	-0.16
4	1.02	3,441	58.78	1.79	13.30	4.25	66.98	1.60	59.25	2.05	12.68	1.40

資料來源：行政院主計處，中華民國臺灣地區國民經濟動向統計季報，中央銀行經濟研究處，臺灣地區金融統計月報。

註：以上所列為政府發佈資料，本院對GDP的預測列於本刊第一部份臺灣總體經濟預測。

Source: DGBAS, Executive Yuan, "Quarterly National Economic Trends, Taiwan Area, ROC
The Central Bank of China, Financial Statistics, Taiwan District, The Republic of China

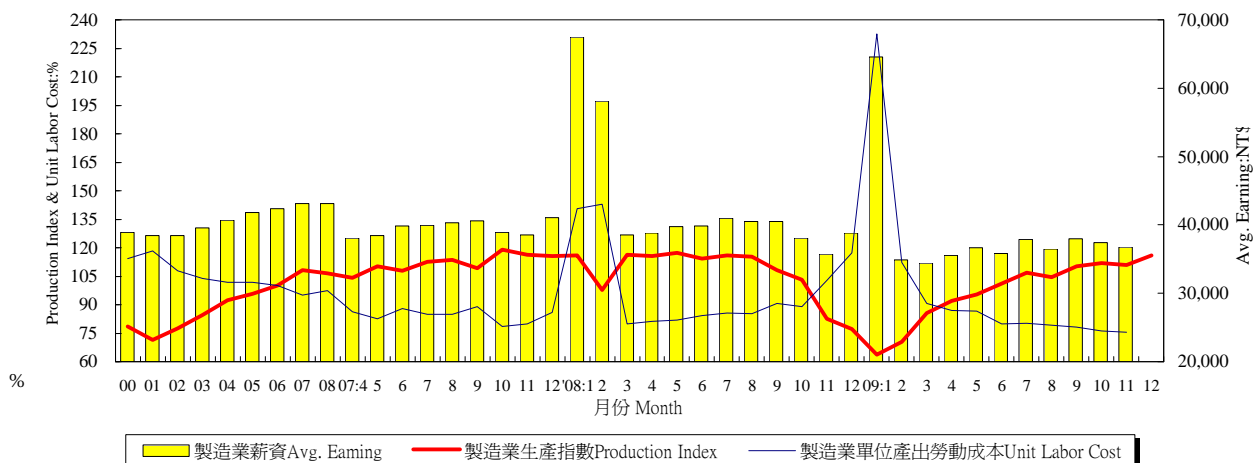
外匯存底及平均每人GNP Total Foreign Reserves & Per Capita GNP



年與季 Year & Quarter	公營事業固定投資 Public Enter. Gross Fixed Capita Formation		政府固定投資 Government Gross Fixed Capita Formation		存貨增加 Increase in Stocks		國外要素淨收入 Net Factor Income From Abroad		平均每人 GNP (美元) Per Capita GNP (US\$)	外匯存底 (十億美元) Total Foreign Reserves (Billion of US\$)
	佔 GDP /GDP (%)	年增率 Annual Rate of Change (%)	佔 GDP /GDP (%)	年增率 Annual Rate of Change (%)	佔 GDP /GDP (%)	新台幣 百萬 (1996年價格) NT Mil (1996=100)	佔 GDP /GDP (%)	年增率 Annual Rate of Change (%)		
1998	2.43	3.72	5.43	-1.67	0.98	114,666	0.74	-24.87	12,692	86.6
1999	2.57	13.86	5.35	3.26	0.59	74,486	0.94	31.71	13,712	106.2
2000	2.32	-3.33	4.80	-4.17	0.90	107,491	1.37	52.36	14,906	106.7
2001	2.40	-0.06	4.44	-9.22	-0.64	-80,627	1.93	37.75	13,401	122.2
2002	2.21	-2.58	3.74	-13.18	-0.42	-59,812	2.33	26.51	13,716	161.7
2003	2.09	-4.70	3.65	-4.47	0.12	12,679	3.07	35.96	14,197	206.6
2004	1.63	-20.60	3.47	-9.59	0.88	104,189	3.27	11.46	15,503	241.7
2005	1.78	14.77	3.46	2.82	0.28	34,223	2.48	-23.31	16,449	253.3
2006	1.59	-8.61	3.14	-11.21	0.38	46,283	2.55	6.28	16,911	266.1
2007	1.57	1.57	3.07	-4.46	0.11	12,867	2.58	5.12	17,596	270.3
2008	1.64	-2.38	3.51	-0.39	1.52	151,821	2.48	-8.47	17,941	291.7
2009	1.73	1.22	4.14	23.64	-1.19	-156,430	3.21	27.56	16,914	348.2
2010	1.75	4.44	3.88	-3.65	0.74	95,560	2.74	-11.94	17,936	350.7
2008 4	2.24	-6.53	4.49	3.91	1.80	44,808	1.56	-34.79	4,284	291.7
2009 1	1.23	-28.33	3.17	13.72	-3.31	-105,376	4.44	-17.90	3,980	300.1
2009 2	1.58	5.77	3.86	22.42	-0.19	-5,945	3.17	90.99	4,027	317.6
2009 3	1.61	8.37	4.10	25.95	-2.03	-60,272	2.47	48.92	4,259	332.2
2009 4	2.43	14.30	5.30	28.61	0.59	15,163	2.85	91.68	4,648	348.2
2010 1	1.32	16.53	2.86	-2.88	1.04	33,674	4.39	4.21	4,448	350.7
2010 2	1.55	0.99	3.69	-1.71	1.70	53,929	2.64	-13.45	4,310	--
2010 3	1.62	3.15	4.01	0.10	0.10	3,163	1.55	-34.81	4,459	--
2010 4	2.45	1.95	4.86	-8.03	0.19	4,794	2.41	-14.63	4,719	--

表三：生產概況

Table 3. Industry Indicators

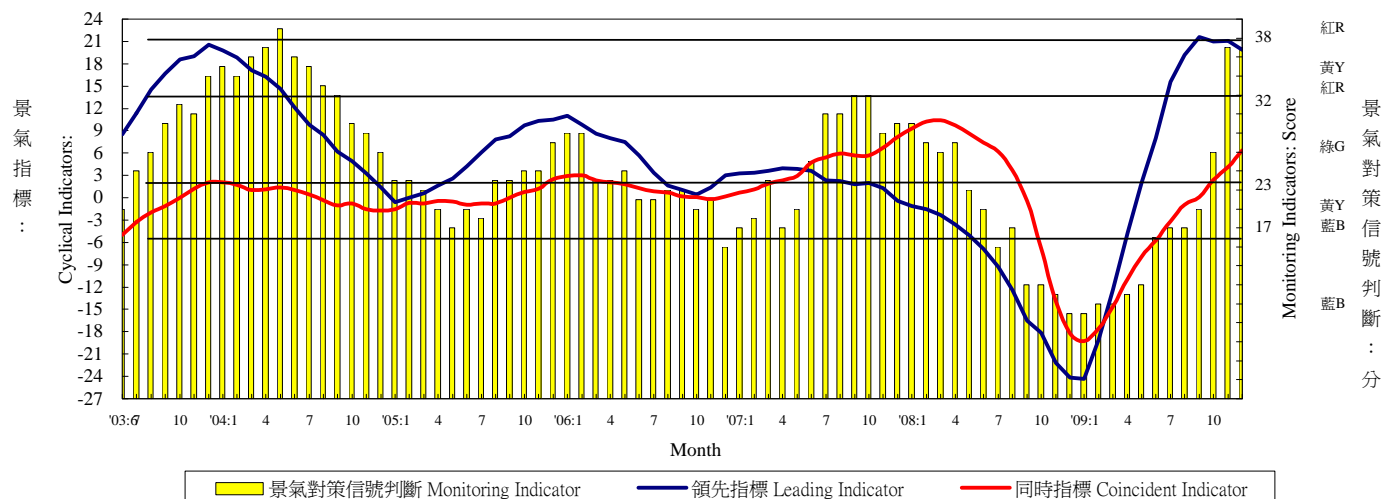


年與月 Year & Month	製造業生產 (基期95年=100) Mfg. Industrial Production (2006=100)		製造業重工業生產 (基期95年=100) Heavy Industry Production (2006=100)		製造業輕工業生產 (基期95年=100) Light Industry Production (2006=100)		製造業單位產出勞動成本 (基期95年=100) Unit labor cost in Manufacturing (2006=100)		製造業薪資 Average Earnings of Employees in Manufacturing		
	指數 Index (%)	年增率 Annual Rate of Change (%)	指數 Index (%)	年增率 Annual Rate of Change (%)	指數 Index (%)	年增率 Annual Rate of Change (%)	指數 Index (%)	年增率 Annual Rate of Change (%)	每人每月 元) Wages per Month (NTS)	年增率 Annual Rate of Change (%)	
2000	78.60	7.85	69.68	10.97	117.47	0.57	114.41	-2.36	38,914	3.12	
2001	71.51	-9.02	63.55	-8.80	106.19	-9.60	118.44	3.52	38,412	-1.29	
2002	77.60	8.52	71.51	12.53	104.26	-1.82	107.78	-9.00	38,435	0.06	
2003	84.71	9.16	80.15	12.08	104.82	0.54	103.93	-3.57	39,549	2.90	
2004	92.31	8.97	88.99	11.03	107.10	2.18	101.69	-2.16	40,657	2.80	
2005	95.69	3.66	93.95	5.57	103.43	-3.43	101.83	0.14	41,858	2.95	
2006	100.00	4.50	100.00	6.44	100.00	-3.32	100.00	-1.80	42,393	1.28	
2007	108.34	8.34	110.28	10.28	99.67	-0.33	95.06	-4.94	43,169	1.83	
2008	106.65	-1.56	109.46	-0.74	94.10	-5.58	97.31	2.61	43,105	-0.22	
2008	97.39	-8.68	99.96	-8.68	85.94	-8.67	--	--	--	--	
2008	1	115.85	12.82	117.93	15.32	106.59	1.92	140.51	25.81	67,482	39.39
2008	2	97.79	17.53	102.29	21.12	77.78	0.13	142.85	-33.74	58,072	-23.54
2008	3	116.45	9.42	120.05	12.46	100.42	-4.25	80.01	-6.98	38,546	0.54
2008	4	115.48	9.90	118.98	11.78	99.89	0.93	81.34	-5.81	38,835	2.05
2008	5	117.43	6.38	121.54	8.68	99.12	-4.69	82.02	-0.63	39,711	3.37
2008	6	114.20	6.01	118.58	8.00	94.68	-3.91	84.40	-3.88	39,825	-0.01
2008	7	116.12	3.17	119.80	4.21	99.68	-2.10	85.74	0.99	41,013	2.61
2008	8	115.16	1.27	119.69	3.39	94.94	-9.22	85.23	0.37	40,466	0.37
2008	9	108.37	-0.89	112.51	0.04	89.93	-5.68	90.51	1.56	40,507	-0.22
2008	10	103.05	-13.33	105.15	-13.90	93.70	-10.33	89.00	13.09	38,054	-2.16
2008	11	82.63	-28.92	82.49	-31.06	83.29	-17.61	102.84	28.53	35,751	-7.32
2008	12	77.23	-33.12	74.54	-37.20	89.23	-11.76	117.34	36.51	38,814	-5.53
2009	1	63.79	-44.94	61.97	-47.45	71.88	-32.56	232.53	65.49	64,585	-4.29
2009	2	70.60	-27.80	69.99	-31.58	73.31	-5.75	112.16	-21.48	34,930	-39.85
2009	3	85.55	-26.53	85.54	-28.75	85.59	-14.77	90.81	13.50	34,395	-10.77
2009	4	91.90	-20.42	93.24	-21.63	85.93	-13.98	87.03	7.00	35,512	-8.56
2009	5	95.56	-18.62	98.60	-18.87	82.03	-17.24	86.56	5.54	36,694	-7.60
2009	6	101.08	-11.49	104.30	-12.04	86.71	-8.42	79.94	-5.28	35,836	-10.02
2009	7	106.78	-8.04	110.41	-7.84	90.63	-9.08	80.17	-6.50	37,862	-7.68
2009	8	104.48	-9.27	108.35	-9.47	87.20	-8.15	79.10	-7.19	36,524	-9.74
2009	9	110.16	1.65	114.67	1.92	90.10	0.19	78.36	-13.42	38,015	-6.15
2009	10	111.83	8.52	116.58	10.87	90.67	-3.23	76.23	-14.35	37,399	-1.72
2009	11	110.96	34.29	115.89	40.49	88.97	6.82	75.64	-26.45	36,732	2.74
2009	12	115.97	50.16	119.94	60.91	98.29	10.15	--	--	--	--
2009	1-	97.39	-8.68	99.96	-8.68	85.94	-8.67	--	--	--	--

資料來源：經濟部統計處，臺灣地區工業生產統計月報，行政院主計處，臺灣地區薪資與生產力統計月報，人力資源統計月報。
Source Department of Statistics, Ministry of Economic Affairs, "Industrial Production Statistics Monthly, Taiwan Area, ROC".

表四：景氣概況

Table 4. Cyclical Indicators



年與月 Year & Month	景氣指標 Domestic business indicators		景氣對策信號判斷 (分) Indicators (Score)			製造業設備 利用率 Utility ratio of manufacturing Capacity (%)	製造業存貨率 Ratio of inventor in manufacturing (1996=100)	失業率 Un-employment rates (%)
	領先指標綜合指數6個月 平滑化年變動率 Leading(six months smoothness year exchange rate)(%)	同時指標(不含趨勢之 循環波動) Coincident(non- trendency cycle fluctuation)(point)	黃藍	YB	20			
1996	4.18	-1.2	黃藍	YB	20	78.25	72.84	2.60
1997	7.60	-0.9	綠	G	27	78.70	67.13	2.72
1998	-2.57	-3.8	黃藍	YB	20	78.84	71.27	2.69
1999	12.93	-0.5	黃藍	YB	22	78.91	65.99	2.92
2000	1.67	8.3	綠	G	26	80.35	65.75	2.99
2001	-10.30	-4.1	藍	B	10	76.28	78.44	4.57
2002	11.34	-1.2	綠	G	23	77.02	69.89	5.17
2003	11.00	-2.4	綠	G	23	78.32	65.65	4.99
2004	11.06	0.3	黃紅	YR	33	80.08	62.59	4.44
2005	5.09	-0.2	黃藍	YB	22	80.13	66.39	4.13
2006	5.12	1.3	黃藍	YB	22	80.29	63.65	3.91
2007	4.48	4.3	綠	G	25	80.42	62.33	3.91
2008	3.94	2.2	黃藍	YB	19	-	-	4.14
2009	5.68	-5.6	黃藍	YB	19	-	-	5.85
2009 1	-24.3	-19.3	藍	B	9	-	-	5.31
2009 2	-19.0	-17.5	藍	B	10	-	-	5.75
2009 3	-12.4	-14.6	藍	B	10	-	-	5.81
2009 4	-4.7	-10.9	藍	B	11	-	-	5.76
2009 5	2.1	-7.9	藍	B	12	-	-	5.82
2009 6	8.0	-5.8	黃藍	YB	17	-	-	5.94
2009 7	15.6	-3.2	黃藍	YB	18	-	-	6.07
2009 8	19.2	-0.9	黃藍	YB	18	-	-	6.13
2009 9	21.6	0.1	黃藍	YB	20	-	-	6.04
2009 10	21.0	2.4	綠	G	26	-	-	5.96
2009 11	21.1	4.1	黃紅	YR	37	-	-	5.86
2009 12	19.9	6.4	黃紅	YR	37	-	-	5.74

資料來源：行政院經建會，台灣景氣指標，經濟部統計處，國內外經濟統計指標速報。

註：景氣指標與景氣對策信號之年平均數字，係依據當年12月份之數字。

Source Council for Economic Planning & Development, ROC, "Business Indicators of Taiwan.

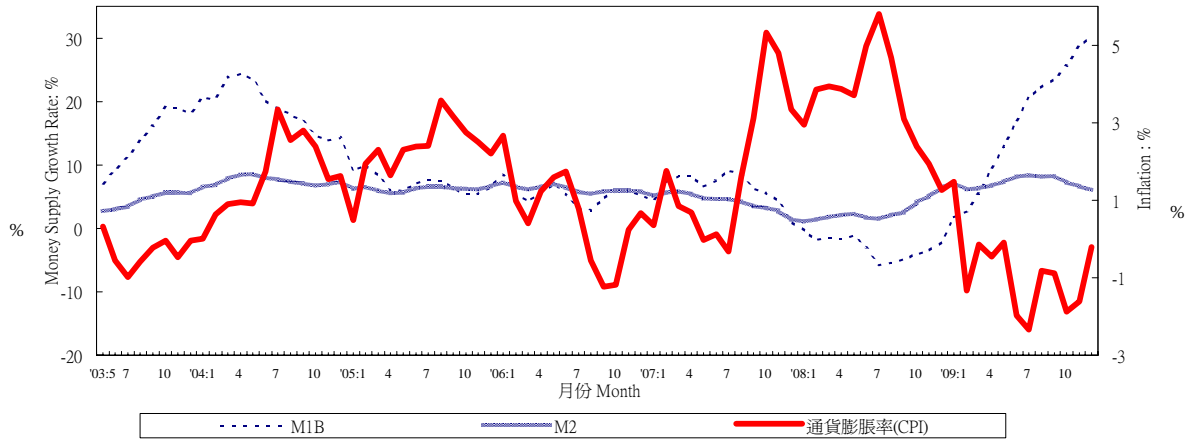
Dept. of Statistics, Ministry of Economic Affairs, "Domestic & Foreign Express Report of Economic Statistics Indicators".

Note R:Red,overheating; G:Green,stable; B:Blue,recession; YR:between Y & R; YB:between Y & B

表五：物價與金融概況

Table 5. Prices and Financial Situation

貨幣供給額與通貨膨脹率 Money Supply Growth Rate and Inflation

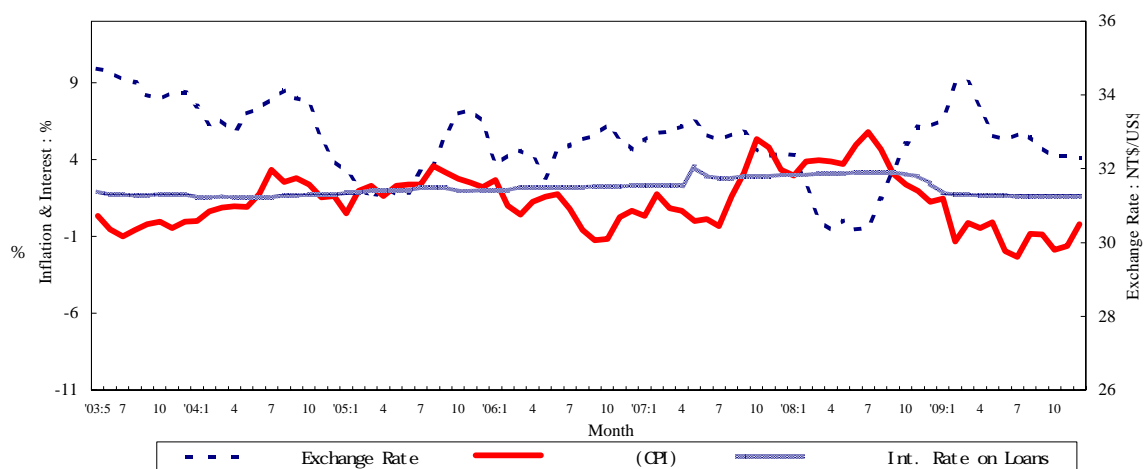


年與月 Year & Month	躉售物價 (基期90年=100) Wholesale Prices (2001=100)		消費者物價 (基期90年=100) Consumer Prices (2001=100)		貨幣供給額年增率 Money Supply (Annual Growth Rate)		
	指數 Index (%)	年增率 Annual Rate of Change (%)	指數 Index (%)	年增率 Annual Rate of Change (%)	M1A (%)	M1B (%)	M2 (%)
1998	104.30	0.60	98.60	1.69	0.39	2.52	8.76
1999	99.55	-4.55	98.77	0.17	3.09	9.87	8.33
2000	101.36	1.82	100.01	1.26	7.36	10.58	7.04
2001	100.00	-1.34	100.00	-0.01	-4.69	-1.02	5.79
2002	85.78	-14.22	99.80	-0.20	8.59	17.01	3.55
2003	87.91	2.48	95.62	-4.19	11.28	11.82	3.77
2004	94.09	7.03	97.17	1.61	21.10	18.98	7.45
2005	94.67	0.61	99.41	2.31	7.65	7.10	6.22
2006	100.00	5.64	100.00	0.60	5.72	5.30	6.22
2007	106.47	6.47	101.80	1.80	6.80	6.44	4.25
2008	111.95	5.15	105.39	3.53	0.97	-2.94	2.67
2009	102.16	-8.75	104.47	-0.87	13.38	16.54	7.22
2009 1	99.20	-10.85	104.43	1.48	4.84	1.79	7.17
2009 2	100.31	-9.34	102.84	-1.33	3.22	2.71	6.19
2009 3	100.13	-9.32	102.95	-0.15	5.98	5.44	6.39
2009 4	99.50	-11.14	103.74	-0.46	8.91	9.50	6.78
2009 5	99.52	-13.51	104.18	-0.09	10.83	12.95	7.35
2009 6	101.12	-13.70	104.08	-1.98	13.90	17.04	8.15
2009 7	102.35	-13.99	104.28	-2.33	15.67	20.64	8.33
2009 8	104.70	-11.01	106.16	-0.82	17.23	22.14	8.17
2009 9	104.54	-9.47	105.46	-0.88	15.63	23.51	8.28
2009 10	103.94	-6.17	105.88	-1.88	17.98	25.66	7.28
2009 11	105.18	1.06	105.08	-1.61	22.62	28.62	6.59
2009 12	105.38	5.55	104.61	-0.21	24.14	30.30	5.99
2009 1-12	102.16	-8.75	104.47	-0.87	13.38	16.54	7.22

資料來源：中央銀行經濟研究處，臺灣地區金融統計月報，臺灣證券交易所，證券統計資料月報。

Source: Economic Research Department, The Central Bank of China. Financial Statistics Monthly, Taiwan District ROC.

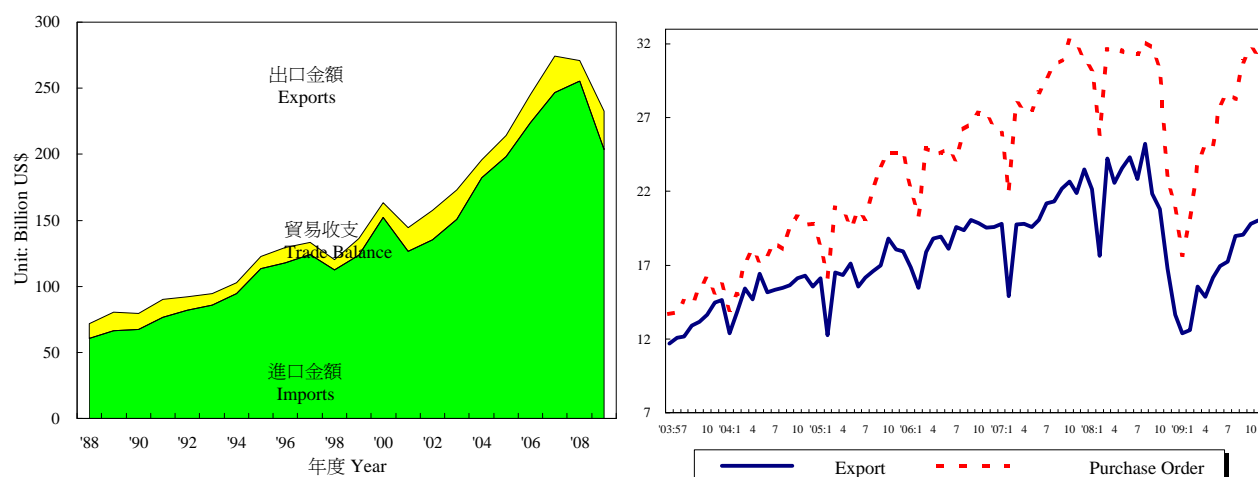
利率、通貨膨脹率與匯率
Interest Rate, Exchange Rate and Inflation



年與月 Year & Month	存款 加權平均利率 Weighted Average Interest Rates on Deposits (%)	基本放款利率 Short Term Loans (1 Year, Max) Interest Rate (%)	商業本票 初級市場 180天利率 Commercial Paper Primary Mkt.(180d) Interest Rate (%)	股票價格 Stock Prices		匯率 Exchange Rate		
				指數 Index (%)	年增率 Annual Rate of Change (%)	新臺幣 對一美元 NT\$ Against US\$	新臺幣 對一日元 NT\$ Against Yen	
1998	5.72	8.01	7.04	7,738	-8.00	33.44	0.2555	
1999	5.00	7.84	5.38	7,427	-4.02	32.27	0.2833	
2000	4.62	7.86	5.62	7,847	5.66	31.23	0.2897	
2001	4.09	7.78	4.17	4,907	-37.46	33.80	0.2781	
2002	1.83	7.46	2.75	5,247	6.91	34.58	0.2757	
2003	1.11	7.10	1.80	5,144	-1.96	34.42	0.2969	
2004	1.08	7.07	1.61	6,033	17.30	33.43	0.3089	
2005	1.34	7.32	2.00	6,090	0.94	32.18	0.2920	
2006	1.61	7.53	2.19	6,842	12.35	32.53	0.2797	
2007	1.90	7.93	2.74	8,489	24.08	32.84	0.2789	
2008	1.98	8.15	3.03	7,065	-16.78	31.53	0.3051	
2009	0.39	6.51	1.65	6,393	-9.51	33.06	0.3532	
2009	1	0.41	7.46	1.85	4,475	-43.51	33.33	0.3684
	2	0.35	7.46	1.70	4,471	-44.11	34.28	0.3706
	3	0.35	7.46	1.70	4,926	-41.63	34.34	0.3498
	4	0.35	6.23	1.65	5,724	-35.52	33.70	0.3404
	5	0.35	6.23	1.65	6,586	-26.08	32.91	0.3417
	6	0.35	6.23	1.65	6,496	-20.59	32.79	0.3397
	7	0.35	6.17	1.60	6,835	-4.11	32.92	0.3484
	8	0.35	6.17	1.60	6,845	-3.19	32.88	0.3467
	9	0.35	6.17	1.60	7,321	18.01	32.59	0.3562
	10	0.47	6.16	1.60	7,589	50.48	32.33	0.3581
	11	0.47	6.16	1.60	7,612	68.79	32.34	0.3626
	12	0.47	6.16	1.60	7,837	74.29	32.28	0.3598
2010	1	--	6.16	1.60	8,099	8098.58	31.90	0.3493

表六：臺灣進出口貿易

Table 6. Foreign Trade Values



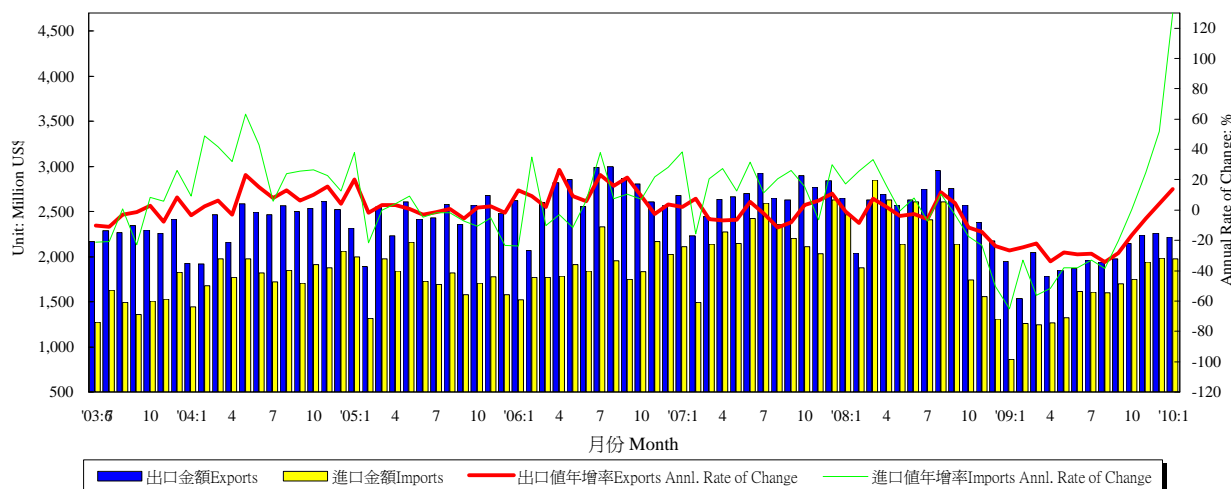
年與月 Year & Month	海關進出口貿易額 Export & Import Values of Foreign Trade					外銷訂單 Purchase Order for Exports	
	出口金額 (百萬美元) Amount (Mil. US\$)	年增率 Annual Rate of Change (%)	進口金額 (百萬美元) Amount (Mil. US\$)	年增率 Annual Rate of Change (%)	貿易收支 (百萬美元) Trade Balance	金額 (百萬美元) Amount (Mil. US\$)	年增率 Annual Rate of Change (%)
1998	112,595	-9.32	105,230	-8.46	7,366	118,843	-4.00
1999	123,733	9.89	111,196	5.67	12,537	127,474	7.26
2000	151,950	22.80	140,732	26.56	11,218	153,424	20.36
2001	126,314	-16.87	107,971	-23.28	18,344	135,714	-11.54
2002	135,317	7.13	113,245	4.89	22,072	150,952	11.23
2003	150,600	11.29	128,010	13.04	22,590	170,028	12.64
2004	182,370	21.10	168,758	31.83	13,613	215,087	26.50
2005	198,432	8.81	182,614	8.21	15,817	256,393	19.20
2006	224,017	12.89	202,698	11.00	21,319	299,313	16.74
2007	246,677	10.12	219,252	8.17	27,425	345,814	15.54
2008	255,629	3.63	240,448	9.67	15,181	351,723	1.71
2009	203,671	-20.33	174,660	-27.36	29,011	322,440	-8.33
2009 2	12,588	-28.58	10,921	-31.59	1,668	20,117	-22.27
3	15,563	-35.79	12,166	-49.54	3,397	23,937	-24.29
4	14,843	-34.28	12,712	-41.14	2,131	25,128	-20.90
5	16,170	-31.46	13,011	-39.11	3,158	25,166	-20.14
6	16,946	-30.38	15,196	-33.44	1,750	27,939	-10.91
7	17,264	-24.48	15,250	-34.11	2,014	28,614	-8.77
8	18,998	-24.64	17,045	-32.29	1,954	28,287	-11.96
9	19,066	-12.72	16,520	-21.09	2,546	30,837	-3.00
10	19,817	-4.72	16,585	-6.70	3,232	31,754	4.41
11	20,016	19.35	17,904	17.95	2,112	31,260	37.11
12	20,030	46.92	18,384	56.20	1,647	31,725	52.63
2010 1	21,745	75.79	19,253	114.72	2,493	--	--
1-1	21,745	75.79	19,253	114.72	2,493	--	--

資料來源：財政部統計處，臺灣地區進出口貿易統計月報，經濟部統計處，臺灣地區外銷訂單統計速報。

Source: Department of Statistics, Ministry of Finance, "Primary Statistics of Export & Import"; Department of Economic Statistics, Ministry of Economic Affairs, "Primary Statistics of Export Order for Exports".

表七：臺灣對美國之進出口狀況

Table 7. Trade with the United States



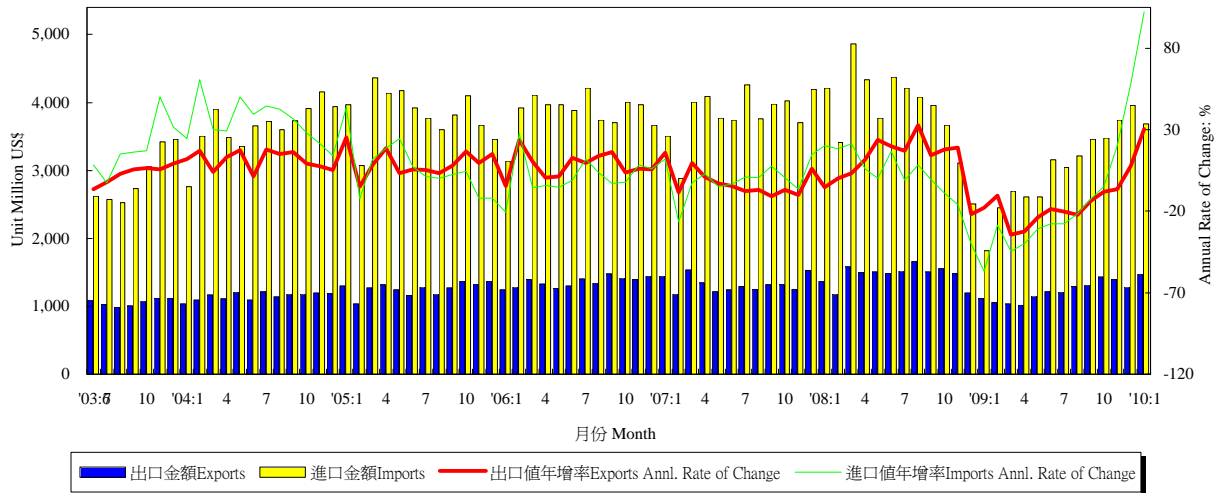
年與月 Year & Month	出口值 Exports			進口值 Imports			出入超 Trade Balance	貿易總額 Total Trade Amount	
	金額 (百萬美元) Amount (Mil. US\$)	年增率 Annual rate of change (%)	份額 Export share (%)	金額 (百萬美元) Amount (Mil. US\$)	年增率 Annual rate of change (%)	份額 Export share (%)	金額 (百萬美元) Amount (Mil. US\$)	金額 (百萬美元) Amount (Mil. US\$)	年增率 Annual rate of change (%)
1998	29,959	1.38	26.61	19,845	-14.59	18.86	10,114	49,804	-5.65
1999	31,339	4.61	25.33	19,818	-0.14	17.82	11,521	50,595	1.59
2000	35,588	13.56	23.42	25,270	27.51	17.96	10,319	59,941	18.47
2001	28,136	-20.94	22.27	18,407	-27.16	17.05	9,728	45,884	-23.45
2002	27,365	-2.74	20.22	18,256	-0.82	16.12	9,110	45,621	-0.57
2003	26,554	-2.97	17.63	16,995	-6.90	13.28	9,558	43,549	-4.54
2004	28,751	8.27	15.77	21,780	28.16	12.91	6,971	50,531	16.03
2005	29,114	1.26	14.67	21,171	-2.80	11.59	7,943	50,285	-0.49
2006	32,361	11.15	14.45	22,664	7.06	11.18	9,696	55,025	9.43
2007	32,077	-0.88	13.00	26,508	16.96	12.09	5,569	58,585	6.47
2008	30,791	-4.01	12.05	26,327	-0.68	10.95	4,464	57,118	-2.51
2009	23,557	-23.49	11.57	18,155	-31.04	10.39	5,402	41,712	-26.97
2009 2	1,536	-24.68	12.20	1,259	-32.94	11.53	277	2,796	-28.64
2009 3	2,046	-22.16	13.15	1,243	-56.36	10.22	803	3,290	-39.95
2009 4	1,783	-33.74	12.01	1,269	-51.73	9.99	514	3,052	-42.64
2009 5	1,848	-28.05	11.43	1,324	-38.02	10.18	524	3,172	-32.58
2009 6	1,867	-29.04	11.02	1,613	-38.17	10.62	253	3,480	-33.59
2009 7	1,963	-28.59	11.37	1,607	-33.20	10.54	356	3,570	-30.74
2009 8	1,940	-34.39	10.21	1,602	-38.56	9.40	338	3,543	-36.35
2009 9	1,978	-28.18	10.37	1,698	-20.53	10.28	279	3,676	-24.83
2009 10	2,147	-16.45	10.83	1,750	0.48	10.55	397	3,896	-9.62
2009 11	2,240	-5.77	11.19	1,942	24.89	10.85	298	4,183	6.36
2009 12	2,261	3.99	11.29	1,986	51.81	10.80	275	4,247	21.95
2010 1	2,215	13.71	10.19	1,976	129.85	10.26	240	4,191	49.27
2010 1-1	2,215	13.71	10.19	1,976	129.85	10.26	240	4,191	49.27

資料來源：財政部統計處，臺灣地區進出口貿易統計月報。

Source Dept. of Statistics, Ministry of Finance, "Preliminary Statistics of Export & Import."

表八：臺灣對日本之進出口狀況

Table 8. Trade with Japan



年與月 Year & Month	出口值 Exports			進口值 Imports			出入超 Trade Balance	貿易總額 Total Trade Amount	
	金額 (百萬美元) Amount (Mil. US\$)	年增率 Annual rate of change (%)	份額 Export share (%)	金額 (百萬美元) Amount (Mil. US\$)	年增率 Annual rate of change (%)	份額 Export share (%)	金額 (百萬美元) Amount (Mil. US\$)	金額 (百萬美元) Amount (Mil. US\$)	年增率 Annual rate of change (%)
1998	9,439	-19.30	8.38	27,060	-6.76	25.71	-17,621	36,498	-10.36
1999	12,043	27.59	9.73	30,637	13.22	27.55	-18,594	42,680	16.94
2000	16,887	40.23	11.11	38,622	26.06	27.44	-21,735	55,509	30.06
2001	13,024	-22.87	10.31	25,933	-32.85	24.02	-12,909	38,958	-29.82
2002	12,368	-5.04	9.14	27,363	5.51	24.16	-14,995	39,731	1.99
2003	12,430	0.50	8.25	32,720	19.57	25.56	-20,290	45,149	13.64
2004	13,808	11.09	7.57	43,718	33.61	25.91	-29,910	57,526	27.41
2005	15,111	9.43	7.62	46,053	5.34	25.22	-30,943	61,164	6.32
2006	16,300	7.87	7.28	46,284	0.50	22.83	-29,984	62,585	2.32
2007	15,934	-2.25	6.46	45,937	-0.75	20.95	-30,003	61,870	-1.14
2008	17,556	10.18	6.87	46,508	1.24	19.34	-28,952	64,064	3.55
2009	14,508	-17.36	7.12	36,233	-22.09	20.74	-21,724	50,741	-20.80
2009 2	1,055	-10.57	8.38	2,447	-28.33	22.41	-1,392	3,503	-23.77
3	1,036	-34.56	6.66	2,697	-44.56	22.17	-1,660	3,733	-42.10
4	1,016	-32.29	6.84	2,610	-39.83	20.53	-1,595	3,626	-37.89
5	1,146	-23.97	7.09	2,607	-30.76	20.04	-1,461	3,753	-28.82
6	1,215	-18.59	7.17	3,161	-27.77	20.80	-1,946	4,376	-25.43
7	1,207	-20.23	6.99	3,042	-27.87	19.95	-1,835	4,249	-25.86
8	1,291	-22.14	6.80	3,210	-21.26	18.84	-1,919	4,502	-21.52
9	1,308	-13.41	6.86	3,458	-12.56	20.93	-2,150	4,765	-12.80
10	1,430	-8.05	7.22	3,477	-5.08	20.97	-2,047	4,907	-5.97
11	1,396	-6.51	6.97	3,743	20.18	20.90	-2,347	5,138	11.53
12	1,284	7.42	6.41	3,957	57.78	21.52	-2,673	5,240	41.53
2010 1	1,469	30.58	6.75	3,689	102.31	19.16	-2,220	5,157	74.94
1-1	1,469	30.58	6.75	3,689	102.31	19.16	-2,220	5,157	74.94

資料來源：財政部統計處，臺灣地區進出口貿易統計月報。

Source Dept. of Statistics, Ministry of Finance, "Preliminary Statistics of Export & Import."