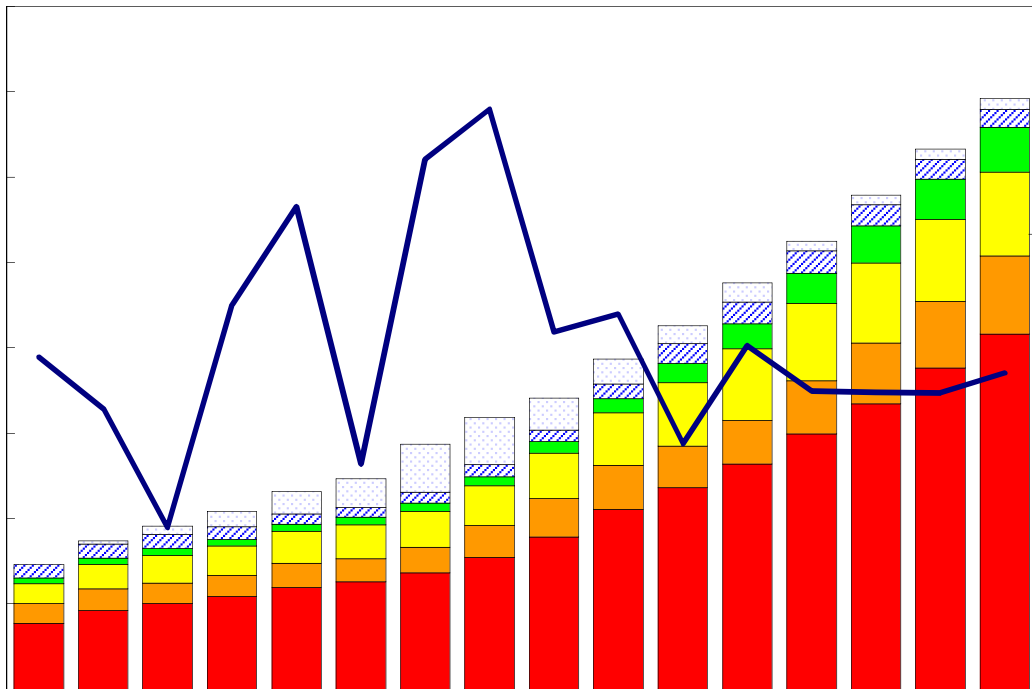


# 臺灣重要經濟變動指標

## Major Economic Indicators for Taiwan



中華經濟研究院

經濟展望中心 編製

中華民國107年10月

Chung-Hua Institution for Economic Research

October 2018

# 目次

# Index

|                       |     |
|-----------------------|-----|
| 臺灣經濟預測.....           | I   |
| 表一：主要總體經濟指標.....      | 2-3 |
| 表二：各業產值概況.....        | 4-5 |
| 表三：生產概況.....          | 6   |
| 表四：景氣概況.....          | 7   |
| 表五：物價與金融概況.....       | 8-9 |
| 表六：臺灣進出口貿易.....       | 10  |
| 表七：臺灣對美國之進出口狀況.....   | 11  |
| 表八：臺灣對日本之進出口狀況.....   | 12  |
| 表九：臺灣對東協六國之進出口狀況..... | 13  |
| 表十：臺灣對香港之進出口狀況.....   | 14  |
| 表十一：兩岸經貿.....         | 15  |

|   |     |
|---|-----|
| Taiwan's Macroeconomic Forecasts.....                     | I   |
| Table 1 : Key Macroeconomic Indicators.....               | 2-3 |
| Table 2 : Gross Domestic Product by Kind of Activity..... | 4-5 |
| Table 3 : Industry Indicators.....                        | 6   |
| Table 4 : Business Cycle Indicators.....                  | 7   |
| Table 5 : Price Index and Financial Indicators.....       | 8-9 |
| Table 6 : External Trade.....                             | 10  |
| Table 7 : External Trade by Major Country: U.S.A.....     | 11  |
| Table 8 : External Trade by Major Country: Japan.....     | 12  |
| Table 9 : External Trade by Major Area: ASEAN.....        | 13  |
| Table 10 : External Trade by Major Area: Europe.....      | 14  |
| Table 11 : External Trade by Major Country: China.....    | 15  |

# 臺灣經濟預測

## Taiwan's Macroeconomic Forecasts

|   | 2018年季預測            |          |          |          | 2017年     | 2018年     | 2019年     |
|---|---------------------|----------|----------|----------|-----------|-----------|-----------|
|   | Year 2018 Quarterly |          |          |          |           |           |           |
|   | 第1季                 | 第2季      | 第3季      | 第4季      | 2017      | 2018      | 2019      |
|   | Q1                  | Q2       | Q3       | Q4       |           |           |           |
| <b>GDP, GNI及其組成, 新臺幣十億元, GDP, GNI and Major Components, Billions NT Dollars</b> |                     |          |          |          |           |           |           |
| <b>實質GDP, Real GDP</b>  | 4,000.26            | 4,100.20 | 4,251.28 | 4,388.70 | 16,335.15 | 16,740.43 | 17,113.08 |
| 年變動率, yoy(%)  | 3.02                | 3.04     | 2.05     | 1.90     | 2.89      | 2.48      | 2.23      |
| <b>每人平均GNI (美元), per capita GNI<sup>[1]</sup></b>                               | 6,589.57            | 6,299.72 | 6,604.30 | 6,851.50 | 25,141.72 | 26,345.10 | 27,124.42 |
| 年變動率, yoy(%)  | 8.03                | 4.63     | 3.98     | 2.73     | 7.33      | 4.79      | 2.96      |
| <b>民間消費, Private Consumption</b>  | 2,305.75            | 2,272.42 | 2,320.09 | 2,314.55 | 9,036.97  | 9,212.81  | 9,376.05  |
| 年變動率, yoy(%)  | 2.73                | 2.05     | 1.49     | 1.52     | 2.38      | 1.95      | 1.77      |
| <b>固定資本形成, Total Fixed Investment</b>   | 881.39              | 924.87   | 969.37   | 969.55   | 3,628.27  | 3,745.18  | 3,779.56  |
| 年變動率, yoy(%)  | 0.55                | 3.88     | 3.69     | 4.66     | -0.35     | 3.22      | 0.92      |
| <b>民間投資, Private Fixed Investment</b>   | 765.04              | 755.43   | 800.87   | 706.43   | 2,953.86  | 3,027.77  | 3,113.74  |
| 年變動率, yoy(%)  | 0.81                | 2.94     | 3.31     | 2.99     | -1.35     | 2.50      | 2.84      |
| <b>財貨與服務輸出, Exports, gds+serv</b>   | 3,050.3             | 3,108.1  | 3,309.3  | 3,450.3  | 12,509.8  | 12,918.0  | 13,431.3  |
| 年變動率, yoy(%)  | 6.69                | 5.78     | 0.38     | 1.01     | 7.46      | 3.26      | 3.97      |
| <b>財貨與服務輸入, Imports, gds+serv</b>   | 2,800.1             | 2,790.0  | 2,966.7  | 2,989.1  | 11,163.1  | 11,545.9  | 11,940.1  |
| 年變動率, yoy(%)  | 6.12                | 3.75     | 2.16     | 1.96     | 5.18      | 3.43      | 3.41      |
| <b>海關出口 (fob, 億美元), Merchandise Export(fob, US \$100 mil)[2]</b>                | 797.36              | 840.88   | 870.62   | 907.69   | 3,172.49  | 3,416.55  | 3,679.97  |
| 年變動率, yoy(%)  | 10.62               | 11.21    | 4.00     | 5.74     | 13.17     | 7.69      | 7.71      |
| <b>海關進口 (cif, 億美元), Merchandise Import (cif, US \$100mil)[2]</b>                | 679.80              | 703.38   | 699.86   | 725.17   | 2,592.66  | 2,808.20  | 3,024.19  |
| 年變動率, yoy(%)  | 11.00               | 10.71    | 6.17     | 5.76     | 12.45     | 8.31      | 7.69      |
| <b>躉售物價指數, Wholesale Price Index [2]</b>  | 101.94              | 104.31   | 103.23   | 104.88   | 100.90    | 103.59    | 105.91    |
| 年變動率, yoy(%)  | -0.12               | 4.93     | 3.09     | 2.85     | 0.90      | 2.67      | 2.24      |
| <b>消費者物價指數, Consumer Price Index [2]</b>  | 101.51              | 101.81   | 102.60   | 103.19   | 100.62    | 102.28    | 103.74    |
| 年變動率, yoy(%)  | 1.56                | 1.65     | 1.79     | 1.59     | 0.62      | 1.65      | 1.43      |
| <b>M2貨幣存量(日平均), Money Stock (M2)</b>  | 43,238.1            | 43,520.9 | 43,889.3 | 44,242.6 | 42,170.8  | 43,722.7  | 45,383.8  |
| 年變動率, yoy(%)  | 3.60                | 3.52     | 3.69     | 3.91     | 3.75      | 3.68      | 3.80      |
| <b>臺幣兌美元匯率, Exchange Rate(NT\$/US\$)[2]</b>                                     | 29.33               | 29.78    | 30.04    | 29.86    | 30.44     | 29.75     | 29.85     |
| 年變動率, yoy(%) <sup>[3]</sup>   | 5.69                | 1.62     | 0.80     | 0.84     | 5.82      | 2.26      | -0.34     |
| <b>商業本票利率, 31-90 day Commercial Paper Rate</b>                                  | 0.44                | 0.44     | 0.46     | 0.46     | 0.44      | 0.45      | 0.60      |
| <b>失業率(%), Unemployment Rate(%)</b>   | 3.66                | 3.64     | 3.64     | 3.53     | 3.76      | 3.62      | 3.55      |

資料來源：中華經濟研究院，經濟展望中心，2018年7月18日。

Source: CEF, CIER, July 18, 2018.

說明：[1]：有關每人平均GNI在此以美元表示。

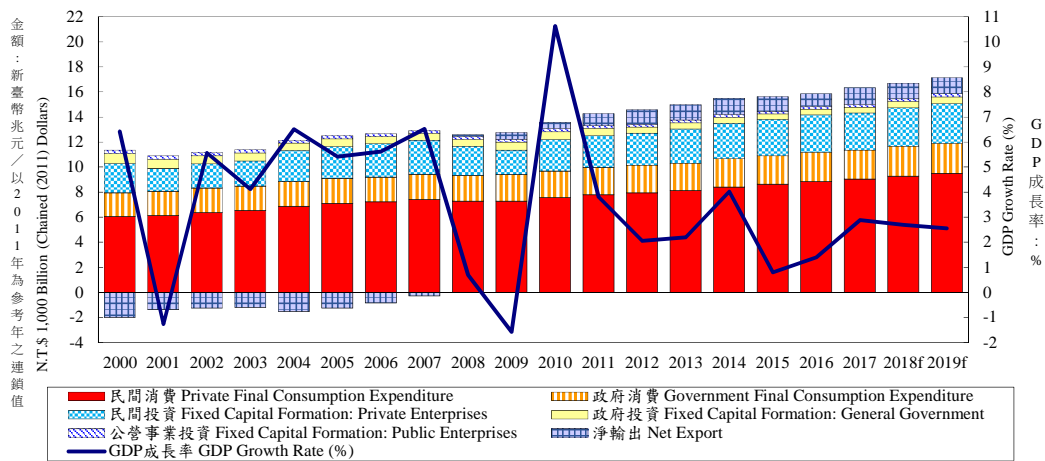
[2]：表示2018年第2季資料為官方統計之初估值，非預測值。

[3]：有關匯率年變動率(%), 正值表示升值，負數表示貶值比率。

表一：主要總體經濟指標(1/2)

Table 1.1 Key Macroeconomic Indicators

國內生產毛額依支出分  
Expenditures on Gross Domestic Product



| 年與季<br>Year &<br>Quarter | GDP<br>成長率<br>GDP<br>Growth<br>Rate<br>(%) | 名目GDP<br>(新台幣十<br>億元)<br>Nominal<br>GDP<br>(NT\$<br>billion) | 民間消費<br>Private Final<br>Consumption<br>Expenditure |  | 民間固定投資<br>Fixed Capital<br>Formation: Private<br>Enterprises |  | 商品服務及輸出<br>Exports of Goods<br>and Services |  | 商品服務及輸入<br>Imports of Goods<br>and Services |  | 政府消費<br>Government Final<br>Consumption<br>Expenditure |  |
|--------------------------|--|--|---|--|--|--|---|--|---|--|--|--|
|                          |  |  | 占GDP<br>比重<br>% of<br>GDP<br>(%)                    | 年增率<br>Annual<br>Growth<br>Rate<br>(%) | 占GDP<br>比重<br>% of<br>GDP<br>(%)                             | 年增率<br>Annual<br>Growth<br>Rate<br>(%) | 占GDP<br>比重<br>% of<br>GDP<br>(%)            | 年增率<br>Annual<br>Growth<br>Rate<br>(%) | 占GDP<br>比重<br>% of<br>GDP<br>(%)            | 年增率<br>Annual<br>Growth<br>Rate<br>(%) | 占GDP<br>比重<br>% of<br>GDP<br>(%)                       | 年增率<br>Annual<br>Growth<br>Rate<br>(%) |
|                          |  |  | 2000  | 6.42                                   | 10,351   | 55.13                                  | 5.24  | 18.47                                  | 14.52                                       | 51.91                                  | 18.00  | 49.92                                  |
| 2001                     | -1.26                                      | 10,158   | 56.67   | 1.43                                   | 14.53  | -22.47                                 | 48.66                                       | -8.47                                  | 43.45                                       | -14.57                                 | 16.70  | 2.44                                   |
| 2002                     | 5.57                                       | 10,681   | 55.74   | 3.48                                   | 14.75  | 6.60                                   | 50.81                                       | 11.64                                  | 43.93                                       | 6.39                                   | 16.38  | 1.77                                   |
| 2003                     | 4.12                                       | 10,966   | 55.63   | 2.86                                   | 15.12  | 3.21                                   | 54.02                                       | 10.02                                  | 47.32                                       | 7.56                                   | 15.98  | -0.66                                  |
| 2004                     | 6.51                                       | 11,650   | 55.72   | 5.26                                   | 18.68  | 24.58                                  | 59.94                                       | 15.73                                  | 56.49                                       | 17.64                                  | 15.47  | 1.13                                   |
| 2005                     | 5.42                                       | 12,092   | 56.10   | 3.36                                   | 18.29  | 2.43                                   | 60.62                                       | 7.62                                   | 56.44                                       | 2.90                                   | 15.26  | 0.42                                   |
| 2006                     | 5.62                                       | 12,641   | 54.96   | 1.79                                   | 18.83  | 4.57                                   | 65.79                                       | 11.38                                  | 60.03                                       | 4.66                                   | 14.67  | -0.63                                  |
| 2007                     | 6.52                                       | 13,407   | 53.69   | 2.42                                   | 18.66  | 1.88                                   | 69.74                                       | 10.45                                  | 61.79                                       | 2.89                                   | 14.34  | 2.20                                   |
| 2008                     | 0.70                                       | 13,151   | 55.21   | -1.69                                  | 17.37  | -14.15                                 | 70.19                                       | 0.55                                   | 65.00                                       | -4.13                                  | 15.14  | 1.54                                   |
| 2009                     | -1.57                                      | 12,962   | 55.36   | 0.01                                   | 14.94  | -15.32                                 | 60.39                                       | -8.42                                  | 51.51                                       | -13.22                                 | 15.86  | 3.22                                   |
| 2010                     | 10.63                                      | 14,119   | 53.10   | 3.76                                   | 17.68  | 27.63                                  | 70.92                                       | 25.67                                  | 63.85                                       | 28.03                                  | 14.86  | 1.05                                   |
| 2011                     | 3.80                                       | 14,312   | 54.49   | 3.12                                   | 17.88  | 1.20                                   | 72.80                                       | 4.20                                   | 66.08                                       | -0.46                                  | 15.15  | 1.95                                   |
| 2012                     | 2.06                                       | 14,687   | 54.71   | 1.82                                   | 17.48  | -0.35                                  | 70.44                                       | 0.41                                   | 62.99                                       | -1.78                                  | 15.35  | 2.16                                   |
| 2013                     | 2.20                                       | 15,231   | 54.16   | 2.34                                   | 17.63  | 7.09                                   | 69.46                                       | 3.50                                   | 60.41                                       | 3.40                                   | 14.72  | -0.79                                  |
| 2014                     | 4.02                                       | 16,112   | 53.31   | 3.44                                   | 17.51  | 3.58                                   | 69.85                                       | 5.86                                   | 59.55                                       | 5.67                                   | 14.54  | 3.66                                   |
| 2015                     | 0.81                                       | 16,771   | 52.21   | 2.63                                   | 17.07  | 3.02                                   | 64.25                                       | -0.37                                  | 51.40                                       | 1.09                                   | 13.99  | -0.10                                  |
| 2016                     | 1.41                                       | 17,152   | 52.66   | 2.32                                   | 17.24  | 2.77                                   | 62.80                                       | 1.93                                   | 50.64                                       | 3.45                                   | 14.38  | 3.72                                   |
| 2017                     | 2.89                                       | 17,431   | 53.04   | 2.38                                   | 16.72  | -1.35                                  | 65.18                                       | 7.46                                   | 52.57                                       | 5.18                                   | 14.06  | -1.15                                  |
| 2018r                    | 2.69                                       | 17,865   | 53.66   | 2.47                                   | 17.26  | 4.26                                   | 66.67                                       | 3.35                                   | 55.92                                       | 4.74                                   | 14.34  | 3.12                                   |
| 2019f                    | 2.55                                       | 18,503   | 53.48   | 2.52                                   | 17.21  | 2.60                                   | 67.57                                       | 3.08                                   | 56.46                                       | 2.98                                   | 13.98  | 0.08                                   |
| 2017 1                   | 2.64                                       | 4,298  | 53.19   | 1.81                                   | 17.85  | 3.89                                   | 62.27                                       | 7.34                                   | 51.06                                       | 7.64                                   | 14.94  | -4.83                                  |
| 2                        | 2.28                                       | 4,162  | 54.38   | 2.05                                   | 17.07  | 0.26                                   | 64.35                                       | 5.08                                   | 53.58                                       | 5.01                                   | 13.62  | 0.84                                   |
| 3                        | 3.18                                       | 4,421  | 52.87   | 2.62                                   | 17.27  | -4.35                                  | 66.68                                       | 11.28                                  | 53.07                                       | 6.82                                   | 13.82  | 0.90                                   |
| 4                        | 3.42                                       | 4,550  | 51.84   | 3.03                                   | 14.80  | -4.94                                  | 67.21                                       | 6.13                                   | 52.60                                       | 1.69                                   | 13.88  | -1.65                                  |
| 2018 1r                  | 3.10                                       | 4,372  | 54.24   | 2.76                                   | 17.85  | 0.74                                   | 63.05                                       | 6.30                                   | 53.23                                       | 6.15                                   | 15.48  | 6.60                                   |
| 2p                       | 3.30                                       | 4,311  | 54.61   | 2.55                                   | 16.88  | 0.01                                   | 66.97                                       | 6.29                                   | 56.66                                       | 4.48                                   | 14.51  | 5.76                                   |
| 3f                       | 2.36                                       | 4,521  | 53.67   | 2.31                                   | 18.05  | 5.08                                   | 68.60                                       | 1.15                                   | 57.66                                       | 4.48                                   | 13.31  | -0.49                                  |
| 4f                       | 2.09                                       | 4,660  | 52.21   | 2.26                                   | 16.29  | 11.80                                  | 67.93                                       | 0.49                                   | 56.06                                       | 3.98                                   | 14.12  | 1.33                                   |
| 2019 1f                  | 2.51                                       | 4,519  | 54.10   | 2.30                                   | 17.84  | 2.63                                   | 64.45                                       | 1.61                                   | 54.47                                       | 1.42                                   | 14.87  | -1.63                                  |
| 2f                       | 2.43                                       | 4,483  | 54.23   | 2.51                                   | 17.22  | 5.65                                   | 68.65                                       | 2.71                                   | 57.69                                       | 2.99                                   | 13.87  | -1.10                                  |
| 3f                       | 2.57                                       | 4,682  | 53.48   | 2.58                                   | 17.89  | 2.07                                   | 68.68                                       | 3.76                                   | 57.20                                       | 3.41                                   | 13.24  | 1.81                                   |
| 4f                       | 2.69                                       | 4,819  | 52.22   | 2.69                                   | 15.96  | 0.20                                   | 68.41                                       | 4.04                                   | 56.47                                       | 3.97                                   | 13.95  | 1.05                                   |

資料來源：行政院主計總處，「國民所得統計及國內經濟情勢展望」，2018年8月17日；

註：1. 以上所列為政府發佈資料，本院對GDP的預測列於本刊第一部份臺灣總體經濟預測。

2. 2014年第2季(含)以前歷年各季資料均已依5年修正結果追溯修正。

3. 2014年11月起主計總處由定基法改以連鎖法衡量經濟成長率。

4. GDP(%)：僅按名目金額計算分配比。

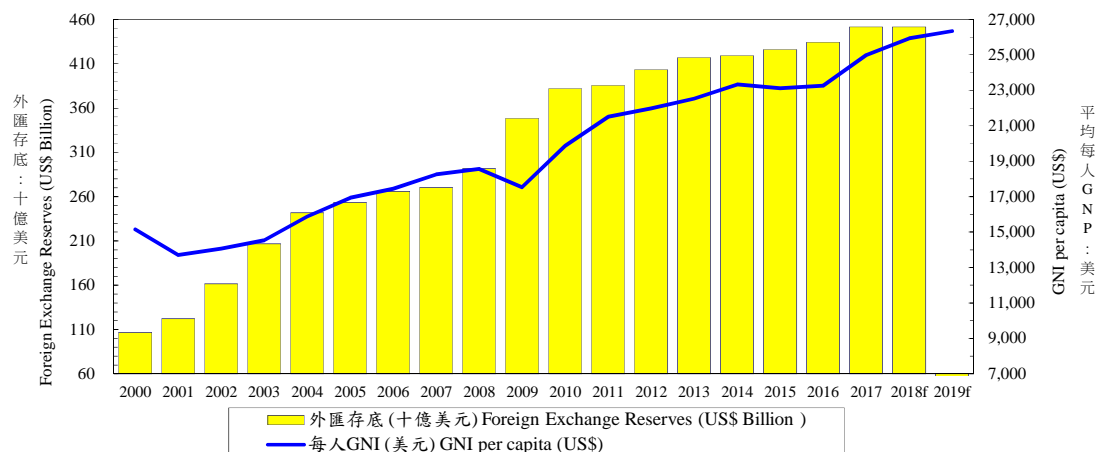
Source：Directorate General of Budget, Accounting and Statistics, Executive Yuan, R.O.C..

表一：主要總體經濟指標(2/2)

Table 1.2 Key Macroeconomic Indicators

外匯存底及平均每人GNI

Foreign Exchange Reserves & GNI Per Capita



| 年與季<br>Year & Quarter | 公營事業固定投資<br>Fixed Capital Formation: Private Enterprises |                               | 政府固定投資<br>Fixed Capital Formation: General Government |                               | 存貨變動<br>Changes in Inventories |  | 國外要素所得淨額<br>Net Factor Income from the Rest of the World |   | 平均每人<br>GNI (美元)<br>GNI per capita (US\$) | 外匯存底<br>(十億美元)<br>Foreign Exchange Reserves (US\$ Billion) |
|-----------------------|--|-------------------------------|---|-------------------------------|--------------------------------|--|--|---|---|--|
|                       | 占GDP比重<br>% of GDP (%)                                   | 年增率<br>Annual Growth Rate (%) | 占GDP比重<br>% of GDP (%)                                | 年增率<br>Annual Growth Rate (%) | 占GDP比重<br>% of GDP (%)         | 新台幣<br>百萬<br>(當期價格)<br>NT Mil<br>NT\$ Million<br>(current price) | 占GDP比重<br>% of GDP (%)                                   | 新台幣<br>百萬<br>(以2011年為參考年之連鎖值)<br>NT\$ Million<br>(Chained 2011 Dollars) |   |  |
| 2000                  | 2.39   | -3.56                         | 5.44  | -3.50                         | 0.89                           | 98,430   | 1.69   | 154,869   | 15,142                                    | 106.7  |
| 2001                  | 2.43   | 0.68                          | 5.07  | -8.26                         | -0.62                          | -75,925  | 2.36   | 213,487   | 13,703                                    | 122.2  |
| 2002                  | 2.23   | -2.97                         | 4.42  | -9.69                         | -0.41                          | -46,186  | 2.83   | 270,147   | 14,062                                    | 161.7  |
| 2003                  | 2.11   | -4.42                         | 4.35  | -2.73                         | 0.11                           | 12,710   | 3.69   | 367,375   | 14,544                                    | 206.6  |
| 2004                  | 1.66   | -19.36                        | 4.16  | -7.04                         | 0.86                           | 86,782   | 3.86   | 409,490   | 15,879                                    | 241.7  |
| 2005                  | 1.77   | 12.77                         | 4.12  | 2.65                          | 0.28                           | 33,677   | 2.81   | 313,759   | 16,930                                    | 253.3  |
| 2006                  | 1.59   | -7.73                         | 3.81  | -8.00                         | 0.38                           | 42,769   | 2.82   | 333,420   | 17,446                                    | 266.1  |
| 2007                  | 1.57   | 2.20                          | 3.68  | -2.80                         | 0.12                           | 16,971   | 2.79   | 350,310   | 18,256                                    | 270.3  |
| 2008                  | 1.65   | -1.98                         | 4.13  | 0.44                          | 1.30                           | 166,513  | 2.53   | 320,632   | 18,564                                    | 291.7  |
| 2009                  | 1.78   | 2.37                          | 4.59  | 14.07                         | -1.40                          | -193,262   | 3.40   | 423,658   | 17,531                                    | 348.2  |
| 2010                  | 1.77   | 7.49                          | 4.17  | -2.92                         | 1.34                           | 196,426  | 3.16   | 435,627   | 19,864                                    | 382.0  |
| 2011                  | 1.54   | -13.44                        | 3.97  | -5.78                         | 0.25                           | 35,921   | 2.71   | 388,372   | 21,507                                    | 385.5  |
| 2012                  | 1.39   | -7.42                         | 3.48  | -10.95                        | 0.15                           | 22,029   | 3.05   | 445,579   | 21,967                                    | 403.2  |
| 2013                  | 1.32   | 2.99                          | 3.23  | -2.79                         | -0.12                          | -18,535  | 2.76   | 411,781   | 22,526                                    | 416.8  |
| 2014                  | 1.31   | 4.95                          | 2.87  | -7.52                         | 0.17                           | 27,323   | 2.91   | 452,196   | 23,330                                    | 419.0  |
| 2015                  | 1.14   | -7.09                         | 2.62  | -2.74                         | 0.12                           | 19,845   | 3.27   | 511,451   | 23,109                                    | 426.0  |
| 2016                  | 1.08   | -3.60                         | 2.58  | 1.24                          | -0.09                          | -15,206  | 3.18   | 504,117   | 23,258                                    | 434.2  |
| 2017                  | 1.06   | 0.67                          | 2.70  | 5.46                          | -0.19                          | -32,317  | 2.75   | 449,887   | 24,984                                    | 451.5  |
| 2018r                 | 1.13   | 7.84                          | 2.83  | 5.06                          | 0.04                           | 6,688  | --   | --  | 25,921                                    | --   |
| 2019f                 | 1.22   | 11.13                         | 3.04  | 10.23                         | -0.03                          | -6,274   | --   | --  | 26,340                                    | --   |
| 2017 1                | 0.74   | 18.34                         | 2.00  | 8.04                          | 0.08                           | 3,316  | 3.44   | 133,743   | 6,062                                     | 437.5  |
| 2                     | 1.03   | -7.49                         | 2.59  | 8.73                          | 0.55                           | 22,993   | 2.44   | 97,017  | 5,983                                     | 441.9  |
| 3                     | 0.91   | 1.79                          | 2.58  | 6.07                          | -1.05                          | -46,595  | 1.81   | 75,597  | 6,312                                     | 447.2  |
| 4r                    | 1.54   | -1.24                         | 3.59  | 1.76                          | -0.26                          | -12,031  | 3.33   | 143,530   | 6,627                                     | 451.5  |
| 2018 1r               | 0.70   | -4.79                         | 2.00  | -0.15                         | -0.09                          | -3,821   | 3.57   | 142,999   | 6,547                                     | 457.2  |
| 2p                    | 1.05   | 3.52                          | 2.55  | -0.77                         | 0.09                           | 4,018  | 2.42   | 99,579  | 6,293                                     | 457.1  |
| 3f                    | 1.04   | 14.54                         | 2.79  | 8.87                          | 0.21                           | 9,291  | --   | --  | 6,419                                     | 460.4  |
| 4f                    | 1.70   | 12.37                         | 3.89  | 8.94                          | -0.06                          | -2,800   | --   | --  | 6,662                                     | --   |
| 2019 1f               | 0.78   | 14.15                         | 2.22  | 13.93                         | 0.22                           | 9,958  | --   | --  | 6,471                                     | --   |
| 2f                    | 1.22   | 19.90                         | 2.80  | 13.91                         | -0.30                          | 13,375   | --   | --  | 6,351                                     | --   |
| 3f                    | 1.07   | 6.15                          | 2.93  | 7.49                          | -0.09                          | -4,268   | --   | --  | 6,647                                     | --   |
| 4f                    | 1.78   | 7.87                          | 4.13  | 8.18                          | 0.03                           | 1,411  | --   | --  | 6,871                                     | --   |

資料來源：行政院主計總處，「國民所得統計及國內經濟情勢展望」，2018年8月17日。

註：1. 以上所列為政府發佈資料，本院對GDP的預測列於本刊第一部份臺灣總體經濟預測。

2. 2014年第2季(含)以前歷年各季資料均已依5年修正結果追溯修正。

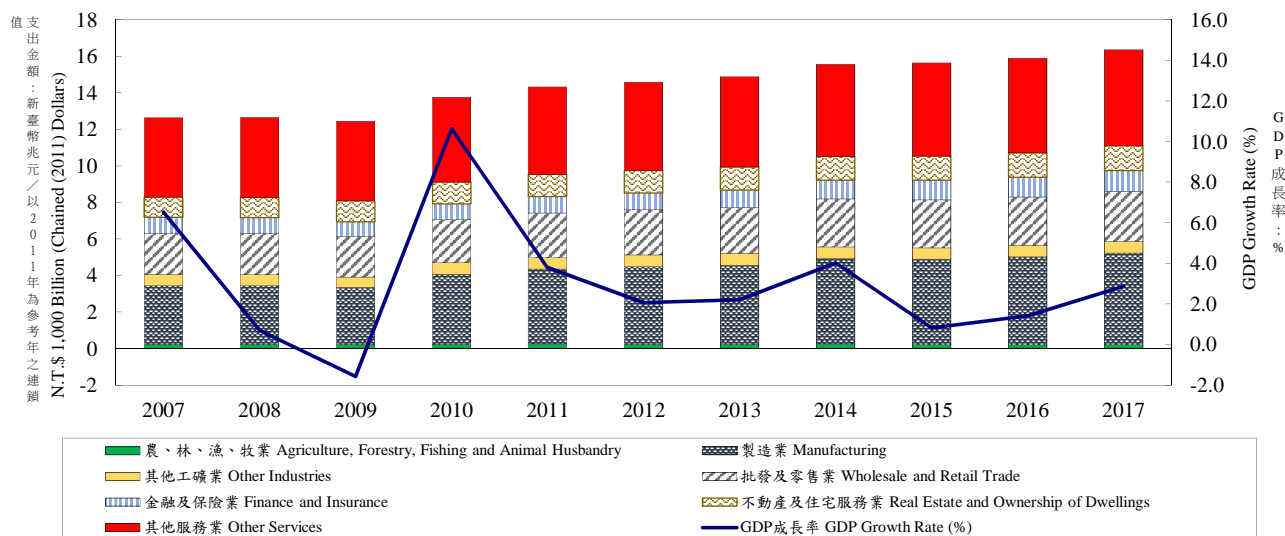
3. 2014年11月起主計總處由定基法改以連鎖法衡量經濟成長率。

4. GDP(%)：僅按名目金額計算分配比。

Source：Directorate General of Budget, Accounting and Statistics, Executive Yuan, R.O.C.; Central Bank of Republic of China (Taiwan).

表二：各業產值概況 (1/2)

Table 2.1 Gross Domestic Product by Kind of Activity  
Gross Domestic Product & GDP Growth Rate  
GDP各產業產值及GDP成長率



| 年與季<br>Year &<br>Quarter | 國內<br>生產毛額<br>GDP<br>(新臺幣<br>十億元)<br>(以2011年為<br>參考年之連<br>鎖值)<br>GDP<br>NT\$ Billion<br>(Chained<br>2011)<br>Dollars) | GDP<br>成長率<br>GDP<br>Growth<br>Rate<br>(%) | 部門別<br>Sector  |  |   |  |                                  |  |   |  |  |  |                                  |  |                                  |  |
|--------------------------|---|--|--|--|---|--|----------------------------------|--|---|--|--|--|----------------------------------|--|----------------------------------|--|
|                          |   |  | 農、林、漁、牧<br>業<br>Agriculture,<br>Forestry, Fishing<br>and Animal<br>Husbandry |  | 工業<br>Industries                        |  |                                  |  |   |  |  |  |                                  |  | 營造業<br>Construction              |  |
|                          |   |  | 合計<br>Total  |  | 礦業及土石採取<br>業<br>Mining and<br>Quarrying |  | 製造業<br>Manufacturing             |  | 電力及燃氣供應<br>業<br>Electricity and Gas<br>Supply |  | 用水供應及汙染整<br>治業<br>Water Supply and<br>Remediation Services |  |                                  |  |                                  |  |
|                          |   |  | 占GDP<br>比重<br>% of<br>GDP<br>(%)   | 年增率<br>Annual<br>Growth<br>Rate<br>(%) | 占GDP<br>比重<br>% of<br>GDP<br>(%)        | 年增率<br>Annual<br>Growth<br>Rate<br>(%) | 占GDP<br>比重<br>% of<br>GDP<br>(%) | 年增率<br>Annual<br>Growth<br>Rate<br>(%) | 占GDP<br>比重<br>% of<br>GDP<br>(%)              | 年增率<br>Annual<br>Growth<br>Rate<br>(%) | 占GDP<br>比重<br>% of<br>GDP<br>(%)                           | 年增率<br>Annual<br>Growth<br>Rate<br>(%) | 占GDP<br>比重<br>% of<br>GDP<br>(%) | 年增率<br>Annual<br>Growth<br>Rate<br>(%) | 占GDP<br>比重<br>% of<br>GDP<br>(%) | 年增率<br>Annual<br>Growth<br>Rate<br>(%) |
| 2007                     | 12,573  | 6.52                                       | 1.45   | -0.02                                  | 32.96                                   | 11.07                                  | 0.17                             | -0.20                                  | 28.44   | 12.92                                  | 1.02   | -7.29                                  | 0.65                             | 10.66                                  | 2.67                             | 1.06                                   |
| 2008                     | 12,661  | 0.70                                       | 1.55   | 0.02                                   | 31.30                                   | -0.37                                  | 0.18                             | -9.20                                  | 27.41   | 0.42                                   | 0.31   | -1.03                                  | 0.67                             | 4.59                                   | 2.73                             | -9.12                                  |
| 2009                     | 12,463  | -1.57                                      | 1.68   | -2.60                                  | 31.50                                   | -2.86                                  | 0.14                             | -10.07                                 | 26.73   | -2.51                                  | 1.47   | 26.63                                  | 0.67                             | 1.24                                   | 2.50                             | -10.16                                 |
| 2010                     | 13,788  | 10.63                                      | 1.60   | 2.25                                   | 33.78                                   | 20.83                                  | 0.14                             | 44.39                                  | 29.06   | 22.66                                  | 1.30   | 4.80                                   | 0.67                             | 4.43                                   | 2.61                             | 13.68                                  |
| 2011                     | 14,312  | 3.80                                       | 1.72   | 4.52                                   | 33.02                                   | 5.98                                   | 0.12                             | -4.80                                  | 28.66   | 6.79                                   | 0.88   | 2.79                                   | 0.68                             | -1.73                                  | 2.68                             | 0.99                                   |
| 2012                     | 14,608  | 2.06                                       | 1.67   | -3.20                                  | 32.75                                   | 3.29                                   | 0.11                             | -1.01                                  | 28.37   | 3.72                                   | 0.93   | 1.69                                   | 0.69                             | 6.38                                   | 2.65                             | -1.39                                  |
| 2013                     | 14,929  | 2.20                                       | 1.69   | 1.35                                   | 33.46                                   | 1.67                                   | 0.10                             | -4.18                                  | 28.75   | 1.70                                   | 1.33   | 3.12                                   | 0.66                             | 2.26                                   | 2.61                             | 0.93                                   |
| 2014                     | 15,530  | 4.02                                       | 1.80   | 1.55                                   | 34.79                                   | 7.23                                   | 0.10                             | -4.35                                  | 29.99   | 8.17                                   | 1.50   | 1.87                                   | 0.63                             | 4.62                                   | 2.56                             | 0.76                                   |
| 2015                     | 15,655  | 0.81                                       | 1.69   | -8.42                                  | 35.27                                   | -0.54                                  | 0.10                             | -6.59                                  | 30.20   | -0.27                                  | 1.84   | -5.36                                  | 0.61                             | 0.08                                   | 2.51                             | -0.88                                  |
| 2016                     | 15,876  | 1.41                                       | 1.79   | -10.09                                 | 35.52                                   | 2.78                                   | 0.09                             | -7.44                                  | 30.66   | 3.06                                   | 1.73   | 4.61                                   | 0.66                             | 3.52                                   | 2.38                             | -1.69                                  |
| 2017                     | 16,335  | 2.89                                       | 1.79   | -13.86                                 | 33.69                                   | -4.14                                  | 0.11                             | -10.39                                 | 28.92   | -4.32                                  | 1.67   | -8.37                                  | 0.60                             | 0.81                                   | 2.39                             | -0.90                                  |
| 2014 1                   | 3,649   | 3.84                                       | 1.93   | 4.90                                   | 32.70                                   | 5.03                                   | 0.10                             | -10.31                                 | 27.76   | 5.43                                   | 1.47   | 11.82                                  | 0.57                             | 4.46                                   | 2.79                             | 0.63                                   |
| 2014 2                   | 3,824   | 4.31                                       | 2.02   | -0.27                                  | 35.39                                   | 7.46                                   | 0.10                             | -4.71                                  | 30.70   | 8.34                                   | 1.31   | 16.84                                  | 0.71                             | 3.51                                   | 2.57                             | 1.10                                   |
| 2014 3                   | 3,982   | 4.39                                       | 1.53   | -3.64                                  | 36.59                                   | 8.38                                   | 0.09                             | -1.88                                  | 31.36   | 9.56                                   | 2.03   | 4.83                                   | 0.65                             | 4.89                                   | 2.45                             | -0.25                                  |
| 2014 4                   | 4,074   | 3.56                                       | 1.73   | 4.97                                   | 34.43                                   | 7.76                                   | 0.12                             | -0.91                                  | 30.06   | 8.94                                   | 1.20   | -12.15                                 | 0.60                             | 5.56                                   | 2.45                             | 1.78                                   |
| 2015 1                   | 3,795   | 3.99                                       | 1.59   | -3.71                                  | 34.94                                   | 6.16                                   | 0.11                             | 0.98                                   | 30.03   | 7.45                                   | 1.59   | -2.42                                  | 0.54                             | -0.37                                  | 2.67                             | -0.77                                  |
| 2015 2                   | 3,851   | 0.71                                       | 1.77   | -7.95                                  | 35.93                                   | 0.01                                   | 0.10                             | -5.69                                  | 30.92   | 0.42                                   | 1.66   | -5.33                                  | 0.68                             | -0.63                                  | 2.57                             | -0.33                                  |
| 2015 3                   | 3,956   | -0.64                                      | 1.59   | -6.37                                  | 36.57                                   | -3.13                                  | 0.08                             | -10.15                                 | 30.97   | -3.22                                  | 2.45   | -4.13                                  | 0.64                             | 0.41                                   | 2.43                             | -1.49                                  |
| 2015 4                   | 4,052   | -0.54                                      | 1.79   | -13.86                                 | 33.69                                   | -4.14                                  | 0.11                             | -10.39                                 | 28.92   | -4.32                                  | 1.67   | -8.37                                  | 0.60                             | 0.81                                   | 2.39                             | -0.90                                  |
| 2016 1                   | 3,783   | -0.30                                      | 1.81   | -10.04                                 | 34.36                                   | -2.10                                  | 0.09                             | -13.82                                 | 29.53   | -2.10                                  | 1.64   | 0.07                                   | 0.53                             | 0.69                                   | 2.57                             | -3.36                                  |
| 2016 2                   | 3,890   | 1.01                                       | 1.90   | -12.84                                 | 35.84                                   | 1.15                                   | 0.09                             | -3.37                                  | 30.81   | 0.93                                   | 1.75   | 15.88                                  | 0.72                             | 2.33                                   | 2.47                             | -1.14                                  |
| 2016 3                   | 4,037   | 2.04                                       | 1.46   | -12.76                                 | 37.30                                   | 4.93                                   | 0.08                             | -2.67                                  | 32.10   | 5.62                                   | 2.15   | 3.69                                   | 0.70                             | 4.95                                   | 2.27                             | -1.44                                  |
| 2016 4                   | 4,165   | 2.77                                       | 1.99   | -5.29                                  | 34.60                                   | 6.75                                   | 0.09                             | -8.99                                  | 30.21   | 7.34                                   | 1.39   | 1.76                                   | 0.67                             | 5.60                                   | 2.24                             | -0.59                                  |
| 2017 1                   | 3,883   | 2.64                                       | 1.74   | 4.04                                   | 34.47                                   | 5.49                                   | 0.08                             | 3.27                                   | 30.29   | 6.66                                   | 1.02   | -3.62                                  | 0.58                             | 3.75                                   | 2.50                             | -0.90                                  |
| 2017 2                   | 3,979   | 2.28                                       | 1.99   | 7.99                                   | 34.97                                   | 2.88                                   | 0.09                             | -1.76                                  | 30.36   | 3.35                                   | 1.27   | -1.22                                  | 0.77                             | 3.90                                   | 2.48                             | -1.14                                  |
| 2017 3                   | 4,166   | 3.18                                       | 1.44   | 3.98                                   | 37.49                                   | 4.11                                   | 0.08                             | 5.32                                   | 32.46   | 4.45                                   | 1.91   | 2.22                                   | 0.73                             | 2.25                                   | 2.31                             | 0.84                                   |
| 2017 4                   | 4,307   | 3.42                                       | 1.75   | 11.74                                  | 34.64                                   | 2.79                                   | 0.09                             | 0.91                                   | 30.19   | 3.12                                   | 1.36   | 1.36                                   | 0.69                             | 2.64                                   | 2.31                             | 0.44                                   |
| 2018 1r                  | 4,003   | 3.10                                       | 1.52   | 1.36                                   | 33.87                                   | 3.03                                   | 0.09                             | 1.15                                   | 29.66   | 3.02                                   | 0.89   | 3.03                                   | 0.60                             | 2.73                                   | 2.64                             | 2.31                                   |
| 2018 2p                  | 4,111   | 3.30                                       | 1.53   | 1.91                                   | 35.60                                   | 4.87                                   | 0.08                             | 2.24                                   | 31.00   | 5.03                                   | 1.19   | 1.86                                   | 0.75                             | 3.36                                   | 2.58                             | 3.33                                   |

資料來源：行政院主計總處，「國民所得統計及國內經濟情勢展望」，2018年8月17日。

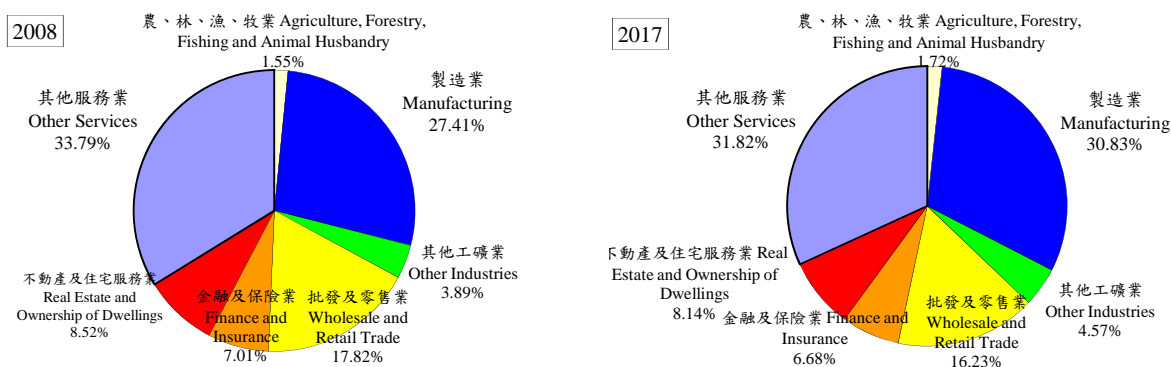
註：1. 以上所列為政府發佈資料，本院對GDP的預測列於本刊第一部份臺灣總體經濟預測。

2. 2014年第2季(含)以前歷年各季資料均已依5年修正結果追溯修正。

3. GDP(%)：僅按名目金額計算分配比。

Source：Directorate General of Budget, Accounting and Statistics, Executive Yuan, R.O.C..

表二：各業產值概況(2/2)  
Table 2.2 Gross Domestic Product by Kind of Activity  
2008 vs. 2017



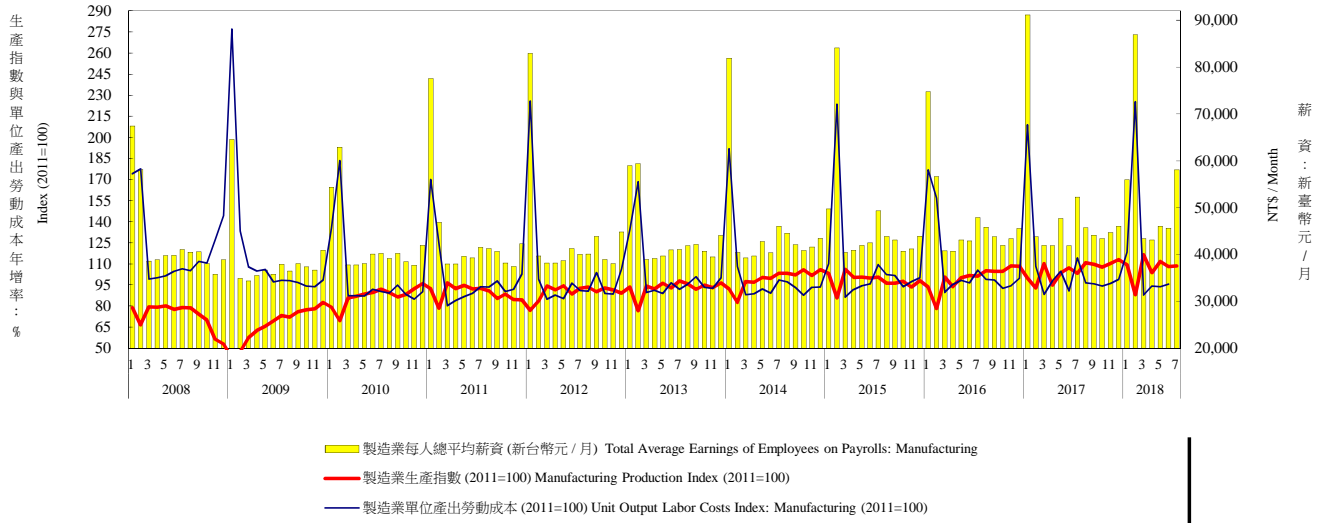
| 年與季<br>Year &<br>Quarter | 部門別<br>Sector             |  |  |  |   |  |  |  |                                    |  |   |  |   |  |                           |  |
|--------------------------|---------------------------|--|--|--|---|--|--|--|------------------------------------|--|---|--|---|--|---------------------------|--|
|                          | 服務業<br>Services           |  |  |  |   |  |  |  |                                    |  |   |  |   |  |                           |  |
|                          | 合計<br>Sub-Total           |  | 批發及零售業<br>Real Estate and<br>Ownership of<br>Dwellings |  | 運輸及<br>倉儲業<br>Transportation<br>and Storage |  | 資訊及通訊傳<br>播業<br>Information and<br>Communication |  | 金融及保險業<br>Finance and<br>Insurance |  | 不動產及住宅<br>服務業<br>Real Estate and<br>Ownership of<br>Dwellings |  | 公共行政<br>及國防；強制性社<br>會安全<br>Public Administration<br>and Defence;<br>Compulsory Social<br>Security |  | 其他<br>Other Services      |  |
|                          | 占GDP比<br>重<br>% of<br>GDP | 年增率<br>Annual<br>Growth<br>Rate<br>(%) | 占GDP<br>比重<br>% of<br>GDP                              | 年增率<br>Annual<br>Growth<br>Rate<br>(%) | 占GDP<br>比重<br>% of<br>GDP                   | 年增率<br>Annual<br>Growth<br>Rate<br>(%) | 占GDP<br>比重<br>% of<br>GDP                        | 年增率<br>Annual<br>Growth<br>Rate<br>(%) | 占GDP<br>比重<br>% of<br>GDP          | 年增率<br>Annual<br>Growth<br>Rate<br>(%) | 占GDP<br>比重<br>% of<br>GDP                                     | 年增率<br>Annual<br>Growth<br>Rate<br>(%) | 占GDP<br>比重<br>% of<br>GDP   | 年增率<br>Annual<br>Growth<br>Rate<br>(%) | 占GDP<br>比重<br>% of<br>GDP | 年增率<br>Annual<br>Growth<br>Rate<br>(%) |
| 2007                     | 65.59                     | 4.62                                   | 17.45  | 5.89                                   | 3.11  | 4.96                                   | 3.38   | 2.57                                   | 7.13                               | 7.20                                   | 8.24  | 6.41                                   | 7.16  | -1.33                                  | 19.12                     | 4.37                                   |
| 2008                     | 67.15                     | 0.41                                   | 17.82  | 0.84                                   | 2.98  | -1.15                                  | 3.49   | 3.83                                   | 7.01                               | -3.58                                  | 8.52  | 1.52                                   | 7.60  | 0.97                                   | 19.72                     | 0.46                                   |
| 2009                     | 66.82                     | -1.02                                  | 17.36  | -1.88                                  | 2.84  | -4.99                                  | 3.54   | 2.61                                   | 6.23                               | -7.49                                  | 8.96  | 2.26                                   | 7.76  | 0.82                                   | 20.12                     | -0.13                                  |
| 2010                     | 64.63                     | 6.28                                   | 16.82  | 6.31                                   | 3.04  | 7.55                                   | 3.31   | 9.42                                   | 6.19                               | 8.43                                   | 8.45  | 4.54                                   | 7.35  | 3.10                                   | 19.47                     | 6.85                                   |
| 2011                     | 65.27                     | 3.07                                   | 17.07  | 3.74                                   | 2.78  | 2.10                                   | 3.23   | 3.56                                   | 6.39                               | 4.22                                   | 8.47  | 1.68                                   | 7.37  | 0.03                                   | 19.96                     | 3.96                                   |
| 2012                     | 65.58                     | 1.27                                   | 16.88  | 1.10                                   | 2.87  | 1.83                                   | 3.18   | 3.05                                   | 6.42                               | 1.09                                   | 8.55  | 1.81                                   | 7.41  | 0.70                                   | 20.27                     | 1.11                                   |
| 2013                     | 64.85                     | 2.29                                   | 16.97  | 1.61                                   | 2.79  | 7.64                                   | 3.08   | 3.39                                   | 6.41                               | 4.00                                   | 8.49  | 2.95                                   | 7.01  | -0.65                                  | 20.09                     | 2.17                                   |
| 2014                     | 63.41                     | 3.25                                   | 16.41  | 4.23                                   | 2.87  | 0.86                                   | 2.96   | 3.16                                   | 6.53                               | 7.62                                   | 8.20  | 2.06                                   | 6.65  | -0.24                                  | 19.79                     | 3.10                                   |
| 2015                     | 63.04                     | 1.24                                   | 16.33  | 0.35                                   | 3.03  | -0.56                                  | 2.93   | 5.44                                   | 6.54                               | 3.79                                   | 8.14  | 2.02                                   | 6.39  | 0.05                                   | 19.67                     | 0.83                                   |
| 2016                     | 62.69                     | 1.34                                   | 16.08  | 0.72                                   | 2.94  | 3.44                                   | 2.92   | 3.75                                   | 6.53                               | 2.28                                   | 8.10  | 0.84                                   | 6.33  | 0.09                                   | 19.79                     | 1.47                                   |
| 2017                     | 62.87                     | 2.26                                   | 16.23  | 3.74                                   | 2.99  | 4.90                                   | 2.76   | 1.56                                   | 6.68                               | 4.52                                   | 8.14  | 1.13                                   | 6.24  | 0.66                                   | 19.82                     | 1.00                                   |
| 2014 1                   | 65.38                     | 3.00                                   | 16.44  | 3.59                                   | 2.84  | 1.87                                   | 2.99   | 3.84                                   | 6.40                               | 7.20                                   | 8.21  | 2.11                                   | 8.07  | -0.35                                  | 20.43                     | 2.75                                   |
| 2014 2                   | 62.59                     | 3.55                                   | 16.24  | 5.72                                   | 2.55  | 3.32                                   | 2.93   | 3.50                                   | 7.08                               | 7.61                                   | 8.25  | 1.46                                   | 6.38  | -0.75                                  | 19.17                     | 2.88                                   |
| 2014 3                   | 61.89                     | 3.90                                   | 15.53  | 4.65                                   | 2.94  | 1.37                                   | 2.92   | 2.07                                   | 6.76                               | 12.31                                  | 7.77  | 2.16                                   | 6.31  | -0.06                                  | 19.66                     | 3.48                                   |
| 2014 4                   | 63.84                     | 2.58                                   | 17.41  | 3.13                                   | 3.12  | -2.86                                  | 3.01   | 3.28                                   | 5.92                               | 3.17                                   | 8.57  | 2.47                                   | 5.90  | 0.22                                   | 19.92                     | 3.25                                   |
| 2015 1                   | 63.47                     | 1.90                                   | 16.00  | 2.29                                   | 3.21  | -0.03                                  | 2.87   | 3.83                                   | 6.18                               | 3.43                                   | 7.88  | 2.31                                   | 7.55  | 0.22                                   | 19.78                     | 1.51                                   |
| 2015 2                   | 62.30                     | 1.24                                   | 16.12  | 0.11                                   | 2.79  | 0.81                                   | 2.90   | 4.95                                   | 7.17                               | 5.39                                   | 8.20  | 2.09                                   | 6.13  | 0.08                                   | 18.99                     | 0.25                                   |
| 2015 3                   | 61.84                     | 0.36                                   | 15.55  | -1.11                                  | 3.01  | -2.83                                  | 2.94   | 6.20                                   | 6.61                               | -0.55                                  | 7.77  | 1.52                                   | 6.17  | 0.86                                   | 19.79                     | 0.61                                   |
| 2015 4                   | 64.52                     | 1.45                                   | 17.64  | 0.01                                   | 3.12  | -0.23                                  | 3.02   | 6.68                                   | 6.23                               | 7.25                                   | 8.69  | 2.15                                   | 5.70  | -1.02                                  | 20.11                     | 0.98                                   |
| 2016 1                   | 63.83                     | 0.57                                   | 15.78  | -1.61                                  | 3.11  | -1.18                                  | 2.92   | 4.98                                   | 6.29                               | 2.82                                   | 7.89  | 0.40                                   | 7.56  | -0.02                                  | 20.28                     | 1.57                                   |
| 2016 2                   | 62.26                     | 1.08                                   | 15.74  | -0.67                                  | 2.70  | 2.06                                   | 2.92   | 4.18                                   | 7.19                               | 2.21                                   | 8.26  | 1.43                                   | 6.17  | 0.12                                   | 19.27                     | 1.74                                   |
| 2016 3                   | 61.24                     | 1.55                                   | 15.31  | 1.64                                   | 2.92  | 5.86                                   | 2.91   | 3.15                                   | 6.58                               | 3.16                                   | 7.75  | 1.24                                   | 6.06  | -0.12                                  | 19.70                     | 0.87                                   |
| 2016 4                   | 63.42                     | 2.12                                   | 17.42  | 3.44                                   | 3.03  | 7.14                                   | 2.92   | 2.80                                   | 6.09                               | 0.90                                   | 8.50  | 0.34                                   | 5.55  | 0.41                                   | 19.91                     | 1.72                                   |
| 2017 1                   | 63.79                     | 2.24                                   | 15.90  | 3.59                                   | 2.93  | 6.94                                   | 2.79   | 1.63                                   | 6.46                               | 3.89                                   | 7.99  | 1.48                                   | 7.53  | 0.88                                   | 20.20                     | 0.74                                   |
| 2017 2                   | 63.04                     | 1.48                                   | 16.05  | 2.96                                   | 2.82  | 2.06                                   | 2.81   | 1.59                                   | 7.29                               | 1.70                                   | 8.44  | 1.10                                   | 6.09  | 0.21                                   | 19.53                     | 0.70                                   |
| 2017 3                   | 61.08                     | 2.67                                   | 15.36  | 4.46                                   | 3.12  | 6.58                                   | 2.71   | 1.47                                   | 6.71                               | 5.63                                   | 7.68  | 0.96                                   | 5.96  | 0.72                                   | 19.54                     | 1.21                                   |
| 2017 4                   | 63.61                     | 2.63                                   | 17.57  | 3.96                                   | 3.09  | 4.13                                   | 2.75   | 1.54                                   | 6.30                               | 7.14                                   | 8.46  | 1.02                                   | 5.42  | 0.84                                   | 20.02                     | 1.29                                   |
| 2018 1r                  | 64.61                     | 3.07                                   | 16.29  | 4.37                                   | 2.93  | 6.64                                   | 2.65   | 2.11                                   | 6.87                               | 7.25                                   | 8.02  | 0.97                                   | 7.40  | 0.98                                   | 20.45                     | 1.76                                   |
| 2018 2p                  | 62.87                     | 2.88                                   | 16.08  | 4.56                                   | 2.55  | 5.43                                   | 2.54   | 0.10                                   | 7.48                               | 5.68                                   | 8.28  | 0.92                                   | 6.35  | 1.00                                   | 19.59                     | 1.93                                   |

資料來源：行政院主計總處，「國民所得統計及國內經濟情勢展望」，2018年8月17日。

- 註：1. 其他包含住宿及餐飲業、專業、科學及技術服務業、支援服務業、教育服務業、醫療保健及社會工作服務業、藝術、娛樂及休閒服務業、其他服務業、進口稅及加值型營業稅。  
2. 2014年第2季(含)以前歷年各季資料均已依5年修正結果追溯修正。  
3. 2014年11月起主計總處由定基法改以連鎖法衡量經濟成長率。  
4. GDP(%)：僅按名目金額計算分配比。

Source：Directorate General of Budget, Accounting and Statistics, Executive Yuan, R.O.C..

表三：生產概況  
Table3. Industry Indicators



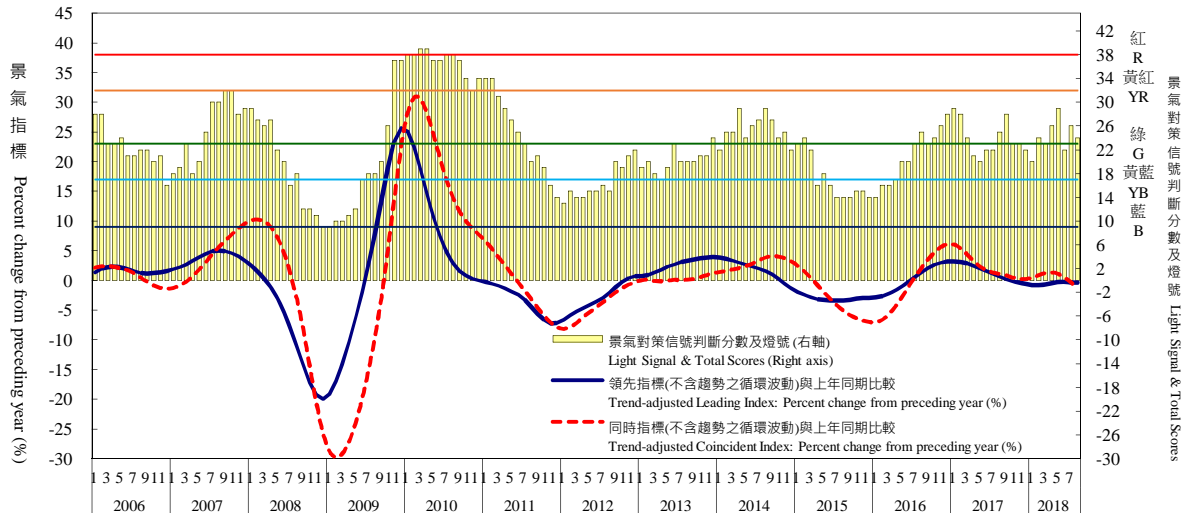
| 年與月<br>Year & Month | 製造業生產 (2016年=100)<br>Manufacturing Production Index (2016=100) |                               |   |                               |   |                               |  |                               |  |                               | 製造業單位產出勞動成本 (2011年=100)<br>Unit Output Labor Costs Index: Manufacturing (2011=100) |                               | 製造業每人總平均薪資 (新台幣 / 月)<br>Total Average Earnings of Employees on Payrolls: Manufacturing |                               |
|---------------------|--|-------------------------------|---|-------------------------------|---|-------------------------------|--|-------------------------------|--|-------------------------------|--|-------------------------------|--|-------------------------------|
|                     | 製造業生產 (2016年=100)<br>Manufacturing Production Index (2016=100) |                               | 金屬機電工業 (2016年=100)<br>Metal Electromechanical Industry (2016=100) |                               | 資訊電子工業 (2016年=100)<br>Information electronics industry (2016=100) |                               | 化學工業 (2016年=100)<br>Chemical industry (2016=100) |                               | 民生工業 (2016年=100)<br>Livelihood Industry (2016=100) |                               | 指數<br>Index  | 年增率<br>Annual Growth Rate (%) | 新台幣<br>NTS / Month   | 年增率<br>Annual Growth Rate (%) |
|                     | 指數<br>Index  | 年增率<br>Annual Growth Rate (%) | 指數<br>Index   | 年增率<br>Annual Growth Rate (%) | 指數<br>Index   | 年增率<br>Annual Growth Rate (%) | 指數<br>Index                                      | 年增率<br>Annual Growth Rate (%) | 指數<br>Index  | 年增率<br>Annual Growth Rate (%) |  |                               |  |                               |
| 2000                | 52.55  | 7.84                          | 76.24   | 2.68                          | 27.20   | 20.35                         | 69.18  | 3.89                          | 116.43   | 1.01                          | 144.75   | -2.37                         | 38,914   | 3.12                          |
| 2001                | 47.81  | -9.02                         | 65.80   | -13.69                        | 23.38   | -14.04                        | 70.79  | 2.33                          | 106.58   | -8.46                         | 149.85   | 3.52                          | 38,412   | -1.29                         |
| 2002                | 52.09  | 8.95                          | 71.62   | 8.84                          | 27.35   | 16.98                         | 76.74  | 8.41                          | 102.57   | -3.76                         | 135.84   | -9.35                         | 38,435   | 0.06                          |
| 2003                | 57.06  | 9.54                          | 76.01   | 6.13                          | 32.14   | 17.51                         | 84.06  | 9.54                          | 101.00   | -1.53                         | 130.53   | -3.91                         | 39,549   | 2.90                          |
| 2004                | 62.75  | 9.97                          | 94.39   | 24.18                         | 31.71   | -1.34                         | 92.51  | 10.05                         | 100.83   | -0.17                         | 126.56   | -3.04                         | 40,657   | 2.80                          |
| 2005                | 64.75  | 3.19                          | 92.89   | -1.59                         | 37.23   | 17.41                         | 92.15  | -0.39                         | 97.62  | -3.18                         | 127.30   | 0.58                          | 41,858   | 2.95                          |
| 2006                | 67.74  | 4.62                          | 94.09   | 1.29                          | 43.25   | 16.17                         | 91.65  | -0.54                         | 95.66  | -2.01                         | 124.89   | -1.89                         | 42,393   | 1.28                          |
| 2007                | 73.38  | 8.33                          | 95.66   | 1.67                          | 51.96   | 20.14                         | 97.80  | 6.71                          | 94.94  | -0.75                         | 118.64   | -5.00                         | 43,178   | 1.85                          |
| 2008                | 72.73  | -0.89                         | 89.89   | -6.03                         | 56.47   | 8.68                          | 91.74  | -6.20                         | 89.81  | -5.40                         | 120.42   | 1.50                          | 43,121   | -0.13                         |
| 2009                | 67.06  | -7.80                         | 73.06   | -18.72                        | 54.24   | -3.95                         | 92.48  | 0.81                          | 81.95  | -8.75                         | 111.31   | -7.57                         | 39,125   | -9.27                         |
| 2010                | 86.99  | 29.72                         | 95.14   | 30.22                         | 77.11   | 42.16                         | 100.98   | 9.19                          | 91.26  | 11.36                         | 98.84  | -11.20                        | 42,300   | 8.12                          |
| 2011                | 89.37  | 2.74                          | 99.97   | 5.08                          | 80.61   | 4.54                          | 97.08  | -3.86                         | 93.52  | 2.48                          | 100.00   | 1.17                          | 43,316   | 2.40                          |
| 2012                | 89.87  | 0.56                          | 97.38   | -2.59                         | 82.16   | 1.92                          | 98.16  | 1.11                          | 94.50  | 1.05                          | 102.25   | 2.25                          | 43,689   | 0.86                          |
| 2013                | 92.93  | 3.40                          | 97.94   | 0.58                          | 87.40   | 6.38                          | 99.63  | 1.50                          | 95.76  | 1.33                          | 102.53   | 0.27                          | 43,829   | 0.32                          |
| 2014                | 99.28  | 6.83                          | 104.03  | 6.22                          | 97.23   | 11.25                         | 100.58   | 0.95                          | 97.69  | 2.02                          | 101.09   | -1.40                         | 45,207   | 3.14                          |
| 2015                | 98.13  | -1.16                         | 100.80  | -3.10                         | 96.38   | -0.87                         | 100.14   | -0.44                         | 97.87  | 0.18                          | 107.38   | 6.22                          | 46,781   | 3.48                          |
| 2016                | 100.00   | 1.91                          | 100.00  | -0.79                         | 100.00  | 3.76                          | 100.00   | -0.14                         | 100.00   | 2.18                          | 106.62   | -0.71                         | 47,258   | 1.02                          |
| 2017                | 105.27   | 5.27                          | 103.78  | 3.78                          | 107.82  | 7.82                          | 100.70   | 0.70                          | 103.74   | 3.74                          | 107.26   | 0.60                          | 48,660   | 2.97                          |
| 2017 1              | 99.99  | 7.04                          | 94.79   | -3.58                         | 102.04  | 15.27                         | 99.39  | 0.61                          | 101.04   | 2.64                          | 209.02   | 18.24                         | 91,089   | 21.88                         |
| 2017 2              | 92.87  | 18.53                         | 88.29   | 12.93                         | 95.68   | 26.56                         | 90.54  | 2.37                          | 92.03  | 24.77                         | 108.27   | -31.73                        | 43,788   | -22.65                        |
| 2017 3              | 110.09   | 9.46                          | 111.49  | 3.48                          | 110.11  | 14.39                         | 104.50   | 0.01                          | 117.48   | 16.54                         | 88.17  | -1.58                         | 41,943   | 2.81                          |
| 2017 4              | 94.91  | 1.30                          | 99.58   | 0.83                          | 91.74   | 1.68                          | 93.47  | -4.23                         | 104.33   | 11.18                         | 97.87  | 2.86                          | 41,838   | 2.81                          |
| 2017 5              | 103.62   | 3.52                          | 104.53  | -0.89                         | 101.51  | 5.25                          | 102.29   | -1.45                         | 115.03   | 13.88                         | 104.67   | 10.02                         | 47,702   | 10.66                         |
| 2017 6              | 107.13   | 5.43                          | 108.15  | 3.93                          | 108.33  | 6.91                          | 105.15   | 3.91                          | 102.61   | 3.88                          | 90.78  | -4.54                         | 41,836   | -2.44                         |
| 2017 7              | 103.36   | 2.19                          | 104.49  | 2.82                          | 104.20  | 3.82                          | 104.71   | 1.15                          | 94.33  | -5.30                         | 114.32   | 8.39                          | 52,229   | 9.08                          |
| 2017 8              | 110.90   | 5.59                          | 108.78  | 6.03                          | 113.17  | 7.05                          | 108.17   | 5.01                          | 108.66   | -1.37                         | 96.40  | -2.41                         | 45,705   | -0.28                         |
| 2017 9              | 109.60   | 4.63                          | 105.01  | 14.63                         | 115.98  | 0.41                          | 99.74  | 5.70                          | 104.58   | 9.34                          | 95.67  | -2.37                         | 44,119   | 0.85                          |
| 2017 10             | 107.65   | 2.95                          | 100.91  | 0.74                          | 115.80  | 6.85                          | 98.09  | -0.96                         | 97.39  | -6.57                         | 94.09  | 2.23                          | 43,350   | 3.39                          |
| 2017 11             | 110.10   | 1.55                          | 109.43  | 5.56                          | 115.52  | 2.42                          | 99.61  | -1.27                         | 103.23   | -5.91                         | 95.99  | 2.80                          | 44,637   | 2.90                          |
| 2017 12             | 113.06   | 4.31                          | 109.94  | 1.97                          | 119.76  | 10.06                         | 102.82   | -1.92                         | 104.13   | -8.67                         | 99.02  | 1.50                          | 46,058   | 1.07                          |
| 2018 1              | 109.54   | 9.55                          | 110.06  | 16.11                         | 110.19  | 7.99                          | 108.48   | 9.15                          | 105.70   | 4.61                          | 118.23   | -43.44                        | 55,919   | -38.61                        |
| 2018 2              | 88.02  | -5.22                         | 80.83   | -8.45                         | 92.51   | -3.31                         | 89.62  | -1.02                         | 77.15  | -16.17                        | 225.26   | 108.05                        | 86,875   | 98.40                         |
| 2018 3              | 116.51   | 5.83                          | 114.53  | 2.73                          | 122.82  | 11.54                         | 106.50   | 1.91                          | 108.77   | -7.41                         | 87.78  | -0.44                         | 43,400   | 3.47                          |
| 2018 4              | 103.78   | 9.35                          | 101.68  | 2.11                          | 108.40  | 18.16                         | 97.70  | 4.53                          | 96.79  | -7.23                         | 94.20  | -3.75                         | 43,086   | 2.98                          |
| 2018 5              | 111.76   | 7.86                          | 114.31  | 9.36                          | 112.98  | 11.30                         | 105.70   | 3.33                          | 110.92   | -3.57                         | 93.74  | -10.44                        | 46,016   | -3.53                         |
| 2018 6              | 108.02   | 0.83                          | 109.11  | 0.89                          | 110.33  | 1.85                          | 101.53   | -3.44                         | 105.99   | 3.29                          | 95.61  | 5.32                          | 45,640   | 9.09                          |
| 2018 7              | 108.87   | 5.33                          | 109.70  | 4.99                          | 109.65  | 5.23                          | 106.13   | 1.36                          | 107.15   | 13.59                         | 118.14   | 3.34                          | 56,506   | 8.19                          |
| 2018 8              | 112.95   | 1.85                          | 108.51  | -0.25                         | 116.79  | 3.20                          | 107.89   | -0.26                         | 112.29   | 3.34                          | --   | --                            | 49,671   | 8.68                          |
| 1-當月                | 107.43   | 4.45                          | 106.09  | 3.49                          | 110.46  | 6.88                          | 102.94   | 1.90                          | 103.10   | -1.29                         | 118.99   | 2.44                          | 53,371   | 5.19                          |

資料來源：經濟部統計處，「107年8月工業生產統計」；行政院主計總處，「107年8月工業及服務業薪資統計結果」。

Source : Department of Statistics, MOEA, "Industrial Production Indexes in August 2018";  
DGBAS, "Earnings and Productivity Statistics in August 2018".



表四：景氣概況  
Table 4. Business Cycle Indicators



| 年與月<br>Year & Month | 景氣指標<br>Business Cycle Indicators   |  |  |   | 景氣對策信號<br>判斷分數及燈號<br>Light Signal & Total Scores |    | 失業率 (%)<br>Unemployment Rate (%) |
|---------------------|-------------------------------------|--|--|---|--|----|----------------------------------|
|                     | 領先指標綜合指數<br>Composite Leading Index | 領先指標循環波動<br>(不含趨勢)<br>Trend-adjusted Leading Index | 同時指標綜合指數<br>Composite Coincident Index | 同時指標循環波動<br>(不含趨勢)<br>Trend-adjusted Coincident Index | 判斷分數   | 燈號 |                                  |
| 2000                | 54.11                               | 104.30   | 55.89                                  | 107.71  | 綠  | 26 | 2.99                             |
| 2001                | 48.90                               | 92.68  | 50.31                                  | 95.36   | 藍  | 10 | 4.57                             |
| 2002                | 55.10                               | 100.84   | 53.75                                  | 98.34   | 綠  | 23 | 5.17                             |
| 2003                | 58.50                               | 100.18   | 57.58                                  | 98.64   | 綠  | 23 | 4.99                             |
| 2004                | 65.14                               | 103.58   | 64.32                                  | 102.25  | 黃紅   | 33 | 4.44                             |
| 2005                | 66.97                               | 99.78  | 67.02                                  | 99.84   | 黃藍   | 22 | 4.13                             |
| 2006                | 71.53                               | 101.46   | 71.00                                  | 100.73  | 黃藍   | 22 | 3.91                             |
| 2007                | 76.43                               | 105.29   | 75.92                                  | 104.58  | 綠  | 25 | 3.91                             |
| 2008                | 70.89                               | 96.83  | 75.00                                  | 102.45  | 黃藍   | 19 | 4.14                             |
| 2009                | 73.69                               | 97.56  | 66.74                                  | 88.33   | 黃藍   | 19 | 5.85                             |
| 2010                | 86.31                               | 105.81   | 85.46                                  | 104.71  | 黃紅   | 37 | 5.21                             |
| 2011                | 89.65                               | 102.11   | 90.98                                  | 103.63  | 綠  | 24 | 4.39                             |
| 2012                | 91.11                               | 99.03  | 91.31                                  | 99.24   | 黃藍   | 17 | 4.24                             |
| 2013                | 96.50                               | 101.60   | 94.49                                  | 99.49   | 黃藍   | 20 | 4.18                             |
| 2014                | 100.66                              | 103.43   | 99.62                                  | 102.35  | 綠  | 25 | 3.96                             |
| 2015                | 99.26                               | 100.32   | 98.11                                  | 99.17   | 黃藍   | 17 | 3.78                             |
| 2016                | 101.58                              | 100.49   | 99.75                                  | 98.67   | 黃藍   | 21 | 3.92                             |
| 2017                | 106.57                              | 101.82   | 105.59                                 | 100.88  | 綠  | 24 | 3.76                             |
| 2017 1              | 105.00                              | 102.12   | 104.25                                 | 101.38  | 綠  | 29 | 3.78                             |
| 2017 2              | 105.27                              | 102.07   | 103.87                                 | 100.71  | 綠  | 28 | 3.85                             |
| 2017 3              | 105.50                              | 101.97   | 103.53                                 | 100.07  | 綠  | 24 | 3.78                             |
| 2017 4              | 105.74                              | 101.88   | 103.41                                 | 99.63   | 黃藍   | 21 | 3.67                             |
| 2017 5              | 106.03                              | 101.83   | 103.67                                 | 99.56   | 黃藍   | 20 | 3.66                             |
| 2017 6              | 106.37                              | 101.82   | 104.35                                 | 99.89   | 黃藍   | 22 | 3.74                             |
| 2017 7              | 106.73                              | 101.83   | 105.29                                 | 100.46  | 黃藍   | 22 | 3.84                             |
| 2017 8              | 107.07                              | 101.81   | 106.33                                 | 101.11  | 綠  | 25 | 3.89                             |
| 2017 9              | 107.38                              | 101.76   | 107.27                                 | 101.66  | 綠  | 28 | 3.77                             |
| 2017 10             | 107.68                              | 101.70   | 107.93                                 | 101.94  | 綠  | 23 | 3.75                             |
| 2017 11             | 107.95                              | 101.61   | 108.44                                 | 102.07  | 綠  | 23 | 3.71                             |
| 2017 12             | 108.15                              | 101.45   | 108.76                                 | 102.03  | 黃藍   | 22 | 3.66                             |
| 2018 1              | 108.35                              | 101.30   | 108.92                                 | 101.83  | 黃藍   | 20 | 3.63                             |
| 2018 2              | 108.67                              | 101.24   | 109.04                                 | 101.59  | 綠  | 24 | 3.70                             |
| 2018 3              | 109.09                              | 101.29   | 109.11                                 | 101.31  | 綠  | 23 | 3.66                             |
| 2018 4              | 109.60                              | 101.42   | 109.11                                 | 100.97  | 綠  | 26 | 3.64                             |
| 2018 5              | 110.09                              | 101.53   | 109.16                                 | 100.67  | 綠  | 29 | 3.63                             |
| 2018 6              | 110.48                              | 101.54   | 109.20                                 | 100.36  | 黃藍   | 22 | 3.70                             |
| 2018 7              | 110.80                              | 101.49   | 109.26                                 | 100.07  | 綠  | 26 | 3.81                             |
| 2018 8              | 111.08                              | 101.39   | 109.35                                 | 99.82   | 綠  | 24 | 3.87                             |

說明：景氣對策信號判斷分數及燈號：  
 Note: Light Signal & Total Scores:  
 ● 紅燈(45-38), ● 黃紅燈(37-32), ● 綠燈(31-23), ● 黃藍燈(22-17), ● 藍燈(16-9)  
 ● Booming(45-38) ● Transitional(37-32) ● stable(31-23) ● Transitional(22-17) ● sluggish(16-9)

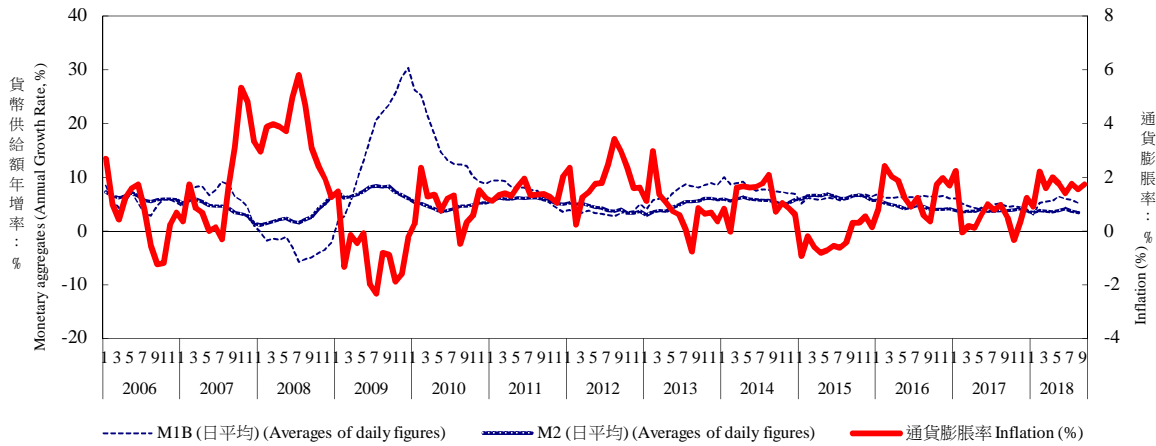
資料來源：國家發展委員會，「107年8月份景氣概況」；主計總處。  
 Source: National Development Council, "Taiwan Business Indicators in August 2018"; DGBAS.

表五：物價與金融概況(1/2)

Table 5.1 Price Index and Financial Indicators

貨幣供給額與通貨膨脹率

Money Supply Growth Rate and Inflation



| 年與月<br>Year & Month | 躉售物價<br>Wholesale Price Index<br>(2016=100) |                        | 消費者物價<br>Consumer Price Index<br>(2016=100) |                        | 貨幣供給額年增率<br>Monetary aggregates<br>(Annual Growth Rate, %) |   |  |
|---------------------|---|------------------------|---|------------------------|--|---|--|
|                     | 指數<br>Index                                 | 年增率<br>Growth Rate (%) | 指數<br>Index                                 | 年增率<br>Growth Rate (%) | M1A (日平均)<br>(Averages of daily figures)<br>(%)            | M1B (日平均)<br>(Averages of daily figures)<br>(%) | M2 (日平均)<br>(Averages of daily figures)<br>(%) |
| 2000                | 91.17                                       | 1.81                   | 85.47                                       | 1.26                   | 7.36   | 10.58   | 7.04   |
| 2001                | 89.95                                       | -1.34                  | 85.46                                       | -0.01                  | -4.69  | -1.02   | 5.72   |
| 2002                | 89.99                                       | 0.04                   | 85.29                                       | -0.20                  | 8.59   | 17.01   | 3.46   |
| 2003                | 92.22                                       | 2.48                   | 85.05                                       | -0.28                  | 11.28  | 11.82   | 3.68   |
| 2004                | 98.71                                       | 7.04                   | 86.42                                       | 1.61                   | 21.10  | 18.98   | 7.27   |
| 2005                | 99.31                                       | 0.61                   | 88.42                                       | 2.31                   | 7.65   | 7.10  | 6.20   |
| 2006                | 104.91                                      | 5.64                   | 88.95                                       | 0.60                   | 5.72   | 5.30  | 6.18   |
| 2007                | 111.69                                      | 6.46                   | 90.55                                       | 1.80                   | 6.80   | 6.44  | 4.16   |
| 2008                | 117.44                                      | 5.15                   | 93.74                                       | 3.52                   | 0.97   | -2.94   | 2.71   |
| 2009                | 107.19                                      | -8.73                  | 92.92                                       | -0.87                  | 13.37  | 16.54   | 7.45   |
| 2010                | 113.04                                      | 5.46                   | 93.82                                       | 0.97                   | 14.51  | 14.93   | 4.53   |
| 2011                | 117.92                                      | 4.32                   | 95.15                                       | 1.42                   | 8.08   | 7.16  | 5.83   |
| 2012                | 116.55                                      | -1.16                  | 96.99                                       | 1.93                   | 3.55   | 3.45  | 4.17   |
| 2013                | 113.72                                      | -2.43                  | 97.76                                       | 0.79                   | 9.15   | 7.27  | 4.78   |
| 2014                | 113.08                                      | -0.56                  | 98.93                                       | 1.20                   | 9.25   | 7.96  | 5.66   |
| 2015                | 103.07                                      | -8.85                  | 98.63                                       | -0.30                  | 6.53   | 6.10  | 6.34   |
| 2016                | 100.00                                      | -2.98                  | 100.00                                      | 1.39                   | 7.11   | 6.33  | 4.51   |
| 2017                | 100.90                                      | 0.90                   | 100.62                                      | 0.62                   | 3.29   | 4.65  | 3.75   |
| 2017 1              | 102.76                                      | 2.75                   | 100.32                                      | 2.24                   | 4.55   | 6.05  | 3.72   |
| 2017 2              | 102.16                                      | 2.47                   | 99.96                                       | -0.06                  | 2.77   | 5.07  | 3.56   |
| 2017 3              | 101.27                                      | 1.71                   | 99.59                                       | 0.18                   | 2.84   | 4.57  | 3.64   |
| 2017 4              | 100.34                                      | 0.99                   | 99.83                                       | 0.10                   | 3.20   | 4.21  | 3.63   |
| 2017 5              | 99.03                                       | -1.29                  | 99.94                                       | 0.59                   | 2.01   | 3.94  | 4.07   |
| 2017 6              | 98.87                                       | -1.74                  | 100.70                                      | 1.00                   | 3.01   | 4.43  | 3.71   |
| 2017 7              | 99.35                                       | -0.66                  | 100.70                                      | 0.77                   | 3.79   | 4.96  | 3.60   |
| 2017 8              | 100.08                                      | 1.17                   | 100.85                                      | 0.96                   | 4.31   | 5.11  | 3.75   |
| 2017 9              | 100.99                                      | 1.92                   | 100.84                                      | 0.49                   | 3.22   | 4.51  | 3.80   |
| 2017 10             | 101.55                                      | 1.65                   | 101.46                                      | -0.33                  | 3.32   | 4.61  | 3.85   |
| 2017 11             | 102.04                                      | 1.56                   | 101.71                                      | 0.34                   | 2.92   | 4.40  | 4.07   |
| 2017 12             | 102.33                                      | 0.31                   | 101.56                                      | 1.22                   | 3.59   | 4.03  | 3.60   |
| 2018 1              | 102.01                                      | -0.73                  | 101.21                                      | 0.89                   | 3.06   | 3.11  | 3.42   |
| 2018 2              | 101.95                                      | -0.21                  | 102.16                                      | 2.20                   | 7.50   | 5.16  | 3.78   |
| 2018 3              | 101.86                                      | 0.58                   | 101.17                                      | 1.59                   | 6.77   | 5.46  | 3.60   |
| 2018 4              | 102.83                                      | 2.48                   | 101.83                                      | 2.00                   | 7.07   | 5.60  | 3.59   |
| 2018 5              | 104.56                                      | 5.58                   | 101.69                                      | 1.75                   | 9.10   | 6.35  | 3.73   |
| 2018 6              | 105.45                                      | 6.66                   | 102.11                                      | 1.40                   | 7.85   | 5.90  | 4.10   |
| 2018 7              | 106.43                                      | 7.13                   | 102.47                                      | 1.76                   | 7.59   | 5.76  | 3.68   |
| 2018 8              | 107.01                                      | 6.92                   | 102.40                                      | 1.54                   | 6.48   | 5.21  | 3.42   |
| 2018 9              | 107.60                                      | 6.55                   | 102.57                                      | 1.72                   | --   | --  | --   |
| 1-當月                | 104.41                                      | 3.85                   | 101.96                                      | 1.65                   | 6.93   | 5.32  | 3.67   |

資料來源：主計總處，「107年9月份物價變動概況」；中央銀行，「金融統計月報」。

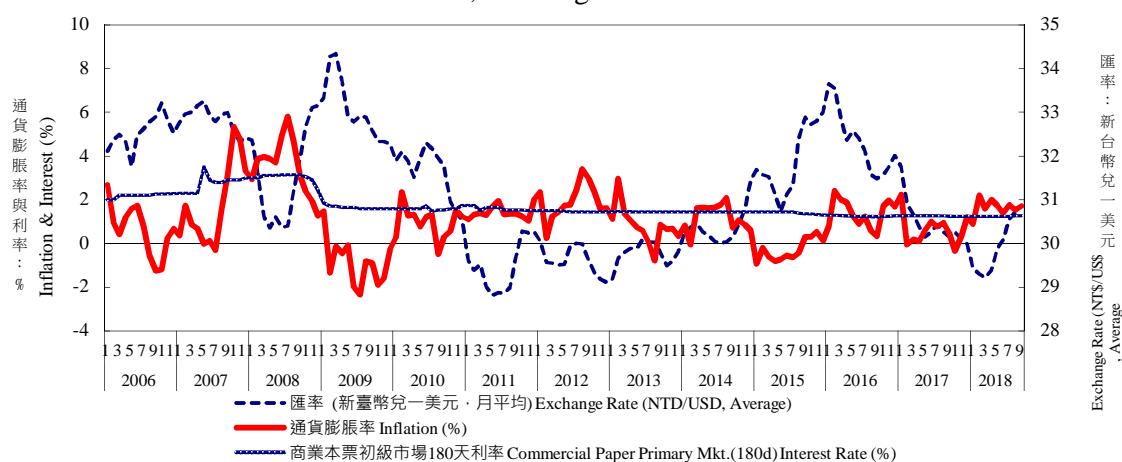
Source : Directorate General of Budget, Accounting and Statistics, Executive Yuan, R.O.C., "The Price Indices for September 2018"; Central Bank of Republic of China (Taiwan), "Financial Statistics Monthly, Republic of China (Taiwan)".

表五：物價與金融概況(2/2)

Table 5.2 Price Index and Financial Indicators

利率、通貨膨脹率與匯率

Interest Rate, Exchange Rate and Inflation

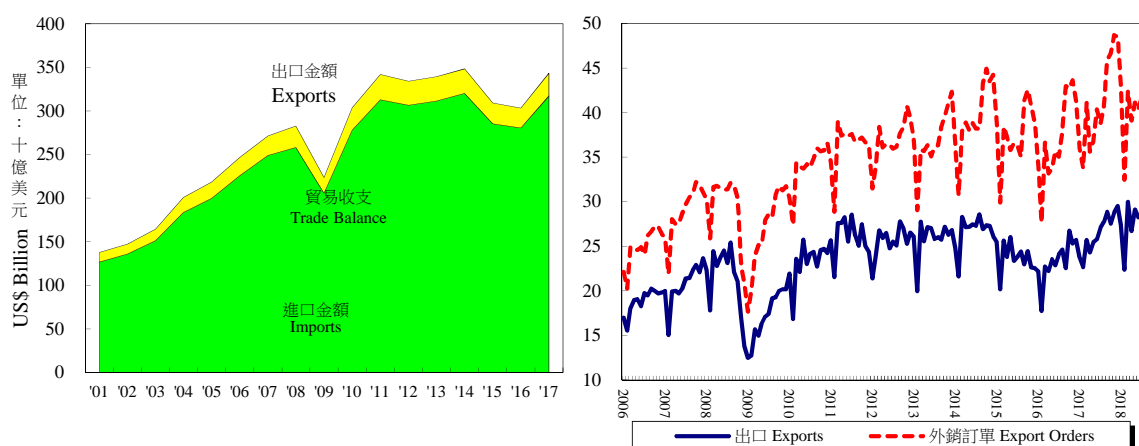


| 年與月<br>Year & Month | 一個月期存款牌告利率<br>1-Month Deposits Rates (%) | 基本放款利率<br>Short Term Loans (1 Year, Max) Interest Rate (%) | 商業本票初級市場180天利率<br>Commercial Paper Primary Mkt.(180d) Interest Rate (%) | 股價指數(月平均)<br>TAIEX: TSEC weighted index (Average) |                               | 匯率(月平均)<br>Exchange Rate (Average) |                    |
|---------------------|--|--|---|---|-------------------------------|------------------------------------|--------------------|
|                     |  |  |   | 指數<br>Index                                       | 年增率<br>Annual Growth Rate (%) | 新臺幣兌一美元<br>NTD/USD                 | 新臺幣兌一日圓<br>JPY/NTD |
| 2000                | 4.34                                     | 7.86   | 5.62  | 7,847   | 5.66                          | 31.23                              | 0.2898             |
| 2001                | 2.13                                     | 7.78   | 4.17  | 4,907   | -37.46                        | 33.80                              | 0.2781             |
| 2002                | 1.48                                     | 7.46   | 2.75  | 5,226   | 6.50                          | 34.58                              | 0.2757             |
| 2003                | 1.05                                     | 7.10   | 1.80  | 5,162   | 0.54                          | 34.42                              | 0.2969             |
| 2004                | 1.15                                     | 7.07   | 1.61  | 6,034   | 30.57                         | 33.42                              | 0.3089             |
| 2005                | 1.50                                     | 7.32   | 2.00  | 6,092   | 0.96                          | 32.17                              | 0.2918             |
| 2006                | 1.71                                     | 7.53   | 2.19  | 6,842   | 12.31                         | 32.53                              | 0.2797             |
| 2007                | 2.09                                     | 7.93   | 2.74  | 8,510   | 24.38                         | 32.84                              | 0.2789             |
| 2008                | 0.91                                     | 8.15   | 3.03  | 7,024   | -17.46                        | 31.52                              | 0.3049             |
| 2009                | 0.47                                     | 6.51   | 1.65  | 6,460   | -8.03                         | 33.05                              | 0.3532             |
| 2010                | 0.67                                     | 6.21   | 1.60  | 7,950   | 23.07                         | 31.64                              | 0.3605             |
| 2011                | 0.88                                     | 6.36   | 1.59  | 8,156   | 2.59                          | 29.46                              | 0.3692             |
| 2012                | 0.88                                     | 6.49   | 1.47  | 7,481   | -8.28                         | 29.61                              | 0.3711             |
| 2013                | 0.88                                     | 6.45   | 1.45  | 8,093   | 8.18                          | 29.77                              | 0.3050             |
| 2014                | 0.88                                     | 6.45   | 1.45  | 8,992   | 11.11                         | 30.37                              | 0.2866             |
| 2015                | 0.74                                     | 6.45   | 1.40  | 8,959   | -0.36                         | 31.90                              | 0.2635             |
| 2016                | 0.60                                     | 6.30   | 1.25  | 8,763   | -2.19                         | 32.32                              | 0.2974             |
| 2017                | 0.60                                     | 6.24   | 1.25  | 10,208  | 16.49                         | 30.44                              | 0.2714             |
| 2017 1              | 0.60                                     | 6.24   | 1.26  | 9,352   | 18.81                         | 31.74                              | 0.2766             |
| 2                   | 0.60                                     | 6.24   | 1.26  | 9,674   | 17.31                         | 30.90                              | 0.2733             |
| 3                   | 0.60                                     | 6.24   | 1.26  | 9,796   | 12.76                         | 30.66                              | 0.2713             |
| 4                   | 0.60                                     | 6.24   | 1.26  | 9,801   | 14.39                         | 30.39                              | 0.2761             |
| 5                   | 0.60                                     | 6.24   | 1.26  | 9,994   | 21.35                         | 30.16                              | 0.2686             |
| 6                   | 0.60                                     | 6.24   | 1.26  | 10,259  | 19.35                         | 30.27                              | 0.2729             |
| 7                   | 0.60                                     | 6.24   | 1.26  | 10,426  | 17.15                         | 30.44                              | 0.2708             |
| 8                   | 0.60                                     | 6.24   | 1.26  | 10,436  | 14.76                         | 30.26                              | 0.2753             |
| 9                   | 0.60                                     | 6.24   | 1.25  | 10,501  | 15.01                         | 30.15                              | 0.2723             |
| 10                  | 0.60                                     | 6.24   | 1.25  | 10,684  | 15.21                         | 30.26                              | 0.2679             |
| 11                  | 0.60                                     | 6.24   | 1.25  | 10,743  | 18.08                         | 30.11                              | 0.2665             |
| 12                  | 0.60                                     | 6.24   | 1.25  | 10,501  | 13.59                         | 29.98                              | 0.2655             |
| 2018 1              | 0.60                                     | 6.24   | 1.25  | 11,005  | 17.68                         | 29.44                              | 0.2658             |
| 2                   | 0.60                                     | 6.24   | 1.25  | 10,718  | 10.79                         | 29.31                              | 0.2716             |
| 3                   | 0.60                                     | 6.24   | 1.25  | 10,904  | 11.31                         | 29.22                              | 0.2756             |
| 4                   | 0.60                                     | 6.24   | 1.25  | 10,796  | 10.15                         | 29.39                              | 0.2734             |
| 5                   | 0.60                                     | 6.24   | 1.25  | 10,818  | 8.25                          | 29.88                              | 0.2724             |
| 6                   | 0.60                                     | 6.24   | 1.25  | 10,987  | 7.09                          | 30.08                              | 0.2734             |
| 7                   | 0.60                                     | 6.25   | 1.25  | 10,840  | 3.97                          | 30.56                              | 0.2743             |
| 8                   | 0.60                                     | 6.25   | 1.26  | 10,909  | 4.53                          | 30.73                              | 0.2767             |
| 9                   | --                                       | 6.25   | 1.26  | 10,884  | 3.65                          | 30.75                              | 0.2748             |
| 1-當月                | 0.60                                     | 6.24   | 1.25  | 10,882  | 8.15                          | 29.95                              | 0.2730             |

資料來源：中央銀行，「金融統計月報」；富邦商務網；第一銀行；臺灣證券交易所。

Source : Central Bank of Republic of China (Taiwan), "Financial Statistics Monthly, Republic of China (Taiwan)"; Economic Daily News; First Bank; Taiwan Stock Exchange Corporation.

表六：對外貿易  
Table 6. External Trade

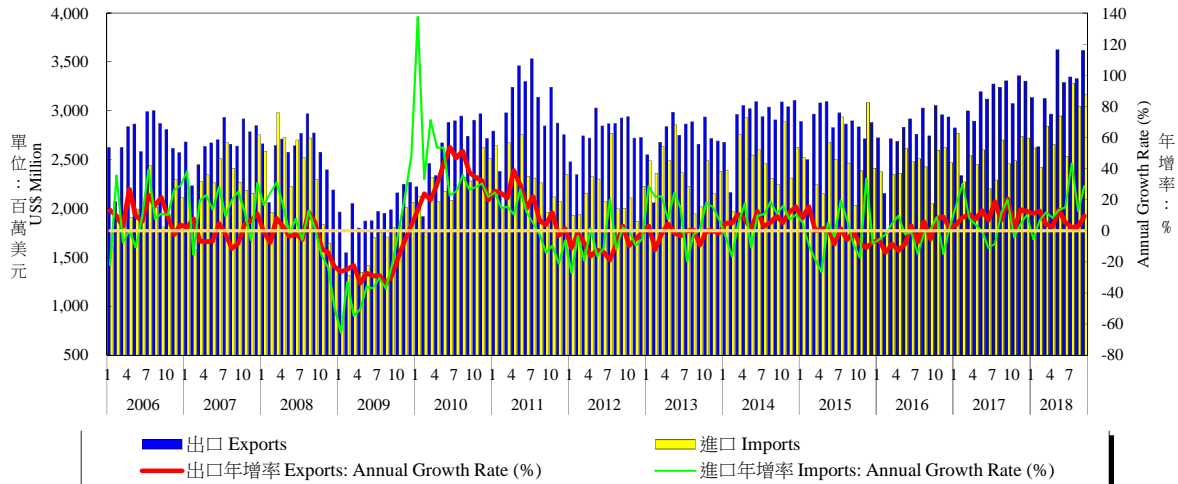


| 年與月<br>Year & Month | 出口<br>Exports                            |                                  | 進口<br>Imports                            |                                  | 貿易收支<br>(百萬美元)<br>Trade Balance<br>(US\$ Million) | 外銷訂單<br>Export Orders                 |   |
|---------------------|--|----------------------------------|--|----------------------------------|---|---------------------------------------|---|
|                     | 金額<br>(百萬美元)<br>Amount<br>(US\$ Million) | 年增率<br>Annual Growth<br>Rate (%) | 金額<br>(百萬美元)<br>Amount<br>(US\$ Million) | 年增率<br>Annual Growth<br>Rate (%) |   | 金額<br>(百萬美元)<br>Amount<br>(Mil. US\$) | 年增率<br>(%)<br>Annual Growth<br>Rate (%) |
| 2001                | 126,612                                  | -                                | 109,588                                  | -                                | 17,024  | 135,714                               | -11.54                                  |
| 2002                | 135,774                                  | 7.24                             | 115,116                                  | 5.04                             | 20,658  | 150,952                               | 11.23                                   |
| 2003                | 151,345                                  | 11.47                            | 130,249                                  | 13.15                            | 21,096  | 170,028                               | 12.64                                   |
| 2004                | 183,643                                  | 21.34                            | 171,554                                  | 31.71                            | 12,089  | 215,087                               | 26.50                                   |
| 2005                | 199,761                                  | 8.78                             | 185,438                                  | 8.09                             | 14,323  | 256,393                               | 19.20                                   |
| 2006                | 225,904                                  | 13.09                            | 206,442                                  | 11.33                            | 19,462  | 299,313                               | 16.74                                   |
| 2007                | 248,792                                  | 10.13                            | 223,115                                  | 8.08                             | 25,677  | 345,814                               | 15.54                                   |
| 2008                | 258,051                                  | 3.72                             | 244,467                                  | 9.57                             | 13,584  | 351,723                               | 1.71                                    |
| 2009                | 205,663                                  | -20.30                           | 177,598                                  | -27.35                           | 28,065  | 322,440                               | -8.33                                   |
| 2010                | 278,008                                  | 35.18                            | 256,274                                  | 44.30                            | 21,734  | 406,720                               | 26.14                                   |
| 2011                | 312,923                                  | 12.56                            | 288,062                                  | 12.40                            | 24,861  | 436,125                               | 7.23                                    |
| 2012                | 306,409                                  | -2.08                            | 277,324                                  | -3.73                            | 29,085  | 441,007                               | 1.12                                    |
| 2013                | 311,428                                  | 1.64                             | 278,010                                  | 0.25                             | 33,418  | 442,929                               | 0.44                                    |
| 2014                | 320,092                                  | 2.78                             | 281,850                                  | 1.38                             | 38,242  | 472,814                               | 6.75                                    |
| 2015                | 285,344                                  | -10.86                           | 237,219                                  | -15.83                           | 48,124  | 451,814                               | -4.44                                   |
| 2016                | 280,321                                  | -1.76                            | 230,568                                  | -2.80                            | 49,753  | 444,536                               | -1.61                                   |
| 2017                | 317,249                                  | 13.17                            | 259,266                                  | 12.45                            | 57,983  | 492,805                               | 10.86                                   |
| 2017 1              | 23,742                                   | 7.01                             | 20,236                                   | 8.52                             | 3,506   | 35,969                                | 5.21                                    |
| 2                   | 22,642                                   | 27.55                            | 19,285                                   | 41.98                            | 3,357   | 33,753                                | 21.99                                   |
| 3                   | 25,696                                   | 13.11                            | 21,724                                   | 19.46                            | 3,973   | 41,124                                | 12.28                                   |
| 4                   | 24,293                                   | 9.28                             | 21,515                                   | 23.37                            | 2,778   | 35,614                                | 7.40                                    |
| 5                   | 25,508                                   | 8.36                             | 22,061                                   | 10.17                            | 3,447   | 36,813                                | 9.14                                    |
| 6                   | 25,813                                   | 12.92                            | 19,960                                   | 3.45                             | 5,853   | 40,353                                | 13.02                                   |
| 7                   | 27,086                                   | 12.43                            | 21,684                                   | 6.22                             | 5,401   | 38,721                                | 10.52                                   |
| 8                   | 27,758                                   | 12.71                            | 22,032                                   | 6.77                             | 5,727   | 40,778                                | 7.52                                    |
| 9                   | 28,867                                   | 27.99                            | 22,204                                   | 22.16                            | 6,663   | 45,921                                | 6.89                                    |
| 10                  | 27,543                                   | 3.02                             | 22,280                                   | -0.13                            | 5,263   | 46,601                                | 9.18                                    |
| 11                  | 28,798                                   | 13.69                            | 22,914                                   | 9.01                             | 5,884   | 48,689                                | 11.62                                   |
| 12                  | 29,504                                   | 14.82                            | 23,371                                   | 12.16                            | 6,133   | 48,471                                | 17.54                                   |
| 2018 1              | 27,382                                   | 15.33                            | 24,695                                   | 22.04                            | 2,686   | 43,063                                | 19.72                                   |
| 2                   | 22,361                                   | -1.24                            | 19,292                                   | 0.04                             | 3,068   | 32,454                                | -3.85                                   |
| 3                   | 29,990                                   | 16.71                            | 23,980                                   | 10.39                            | 6,010   | 42,383                                | 3.06                                    |
| 4                   | 26,728                                   | 10.02                            | 22,562                                   | 4.87                             | 4,166   | 39,111                                | 9.82                                    |
| 5                   | 29,122                                   | 14.17                            | 24,712                                   | 12.02                            | 4,410   | 41,112                                | 11.68                                   |
| 6                   | 28,242                                   | 9.41                             | 23,032                                   | 15.39                            | 5,210   | 40,314                                | -0.10                                   |
| 7                   | 28,362                                   | 4.71                             | 26,087                                   | 20.30                            | 2,275   | 41,799                                | 7.95                                    |
| 8                   | 28,295                                   | 1.93                             | 23,771                                   | 7.89                             | 4,525   | 43,676                                | 7.11                                    |
| 9                   | 29,621                                   | 2.61                             | 25,288                                   | 13.89                            | 4,333   | --                                    | --                                      |
| 1-當月                | 250,104                                  | 8.08                             | 213,420                                  | 11.91                            | 36,684  | 323,913                               | 6.86                                    |

資料來源：財政部統計處，「107年9月海關進出口貿易統計速報」；經濟部統計處，「107年8月外銷訂單統計」。

Source : Department of Statistics, Ministry of Finance, "Summary of Exports and Imports form September 2018"; Department of Statistics, MOEA, "Export Order in August 2018".

表七：臺灣對美國之進出口狀況  
Table 7. External Trade by Major Country: U.S.A.

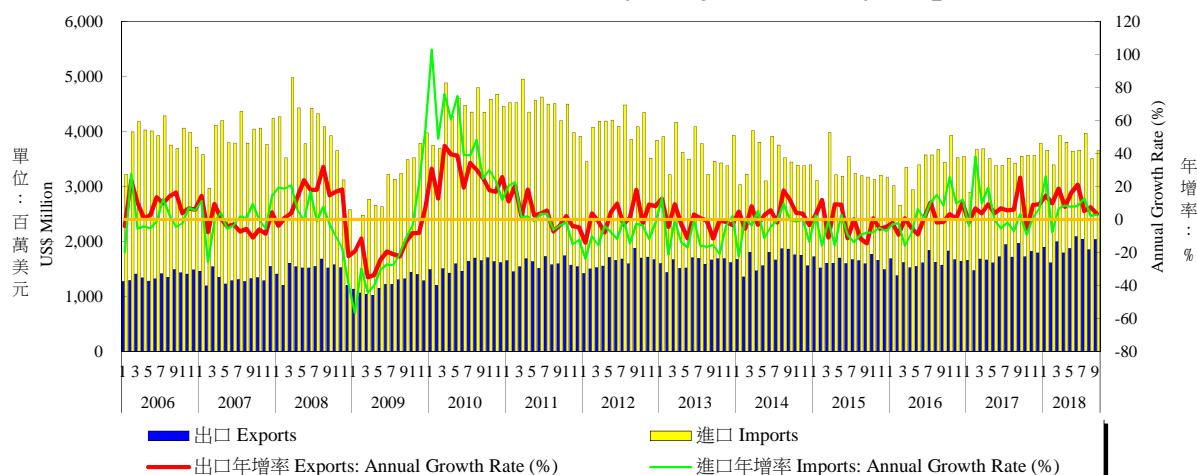


| 年與月<br>Year & Month | 出口<br>Exports                            |                                     |                    | 進口<br>Imports                            |                                     |                    | 貿易收支<br>(百萬美元)<br>Trade Balance<br>(US\$ Million) | 總貿易額<br>Total Trade                      |                                     |
|---------------------|--|-------------------------------------|--------------------|--|-------------------------------------|--------------------|---|--|-------------------------------------|
|                     | 金額<br>(百萬美元)<br>Amount<br>(US\$ Million) | 年增率<br>Annual<br>Growth Rate<br>(%) | 占比<br>Share<br>(%) | 金額<br>(百萬美元)<br>Amount<br>(US\$ Million) | 年增率<br>Annual<br>Growth Rate<br>(%) | 占比<br>Share<br>(%) |   | 金額<br>(百萬美元)<br>Amount<br>(US\$ Million) | 年增率<br>Annual<br>Growth Rate<br>(%) |
| 2001                | 28,128                                   | --                                  | 22.22              | 19,091                                   | --                                  | 17.42              | 9,037   | 47,219                                   | --                                  |
| 2002                | 27,375                                   | -2.68                               | 20.16              | 19,024                                   | -0.35                               | 16.53              | 8,351   | 46,398                                   | -1.74                               |
| 2003                | 26,577                                   | -2.91                               | 17.56              | 17,795                                   | -6.46                               | 13.66              | 8,783   | 44,372                                   | -4.37                               |
| 2004                | 28,815                                   | 8.42                                | 15.69              | 22,619                                   | 27.11                               | 13.18              | 6,196   | 51,435                                   | 15.92                               |
| 2005                | 29,165                                   | 1.21                                | 14.60              | 21,886                                   | -3.24                               | 11.80              | 7,279   | 51,052                                   | -0.74                               |
| 2006                | 32,475                                   | 11.35                               | 14.38              | 23,839                                   | 8.92                                | 11.55              | 8,635   | 56,314                                   | 10.31                               |
| 2007                | 32,165                                   | -0.95                               | 12.90              | 27,642                                   | 15.95                               | 12.40              | 4,523   | 59,807                                   | 6.20                                |
| 2008                | 30,981                                   | -3.68                               | 12.00              | 27,593                                   | -0.18                               | 11.30              | 3,388   | 58,574                                   | -2.06                               |
| 2009                | 23,707                                   | -23.48                              | 11.50              | 19,201                                   | -30.41                              | 10.80              | 4,506   | 42,908                                   | -26.75                              |
| 2010                | 31,675                                   | 33.61                               | 11.40              | 26,799                                   | 39.57                               | 10.50              | 4,876   | 58,474                                   | 36.28                               |
| 2011                | 36,558                                   | 15.42                               | 11.70              | 27,767                                   | 3.61                                | 9.60               | 8,791   | 64,326                                   | 10.01                               |
| 2012                | 33,224                                   | -9.12                               | 10.80              | 25,701                                   | -7.44                               | 9.30               | 7,523   | 58,925                                   | -8.40                               |
| 2013                | 32,630                                   | -1.79                               | 10.50              | 28,410                                   | 10.54                               | 10.20              | 4,220   | 61,040                                   | 3.59                                |
| 2014                | 35,114                                   | 7.61                                | 11.00              | 30,036                                   | 5.72                                | 10.70              | 5,078   | 65,151                                   | 6.73                                |
| 2015                | 34,543                                   | -1.63                               | 12.10              | 29,196                                   | -2.80                               | 12.30              | 5,347   | 63,739                                   | -2.17                               |
| 2016                | 33,523                                   | -2.95                               | 12.00              | 28,597                                   | -2.05                               | 12.40              | 4,926   | 62,121                                   | -2.54                               |
| 2017                | 36,942                                   | 10.20                               | 11.60              | 30,237                                   | 5.73                                | 11.70              | 6,705   | 67,179                                   | 8.15                                |
| 2017 1              | 2,826                                    | 3.75                                | 11.90              | 2,769                                    | 16.47                               | 13.68              | 57  | 5,595                                    | 9.68                                |
| 2017 2              | 2,338                                    | 8.56                                | 10.30              | 2,273                                    | 30.27                               | 11.80              | 66  | 4,611                                    | 18.27                               |
| 2017 3              | 3,000                                    | 10.58                               | 11.70              | 2,540                                    | 8.20                                | 11.70              | 460   | 5,541                                    | 9.47                                |
| 2017 4              | 2,894                                    | 7.58                                | 11.90              | 2,454                                    | 3.99                                | 11.40              | 440   | 5,348                                    | 5.90                                |
| 2017 5              | 3,197                                    | 12.91                               | 12.50              | 2,600                                    | -0.55                               | 11.80              | 597   | 5,797                                    | 6.45                                |
| 2017 6              | 3,121                                    | 6.97                                | 12.10              | 2,204                                    | -11.11                              | 11.00              | 918   | 5,325                                    | -1.33                               |
| 2017 7              | 3,276                                    | 18.64                               | 12.10              | 2,293                                    | -8.56                               | 10.60              | 983   | 5,569                                    | 5.69                                |
| 2017 8              | 3,243                                    | 7.00                                | 11.70              | 2,700                                    | 11.33                               | 12.30              | 542   | 5,943                                    | 8.92                                |
| 2017 9              | 3,309                                    | 20.54                               | 11.50              | 2,458                                    | 19.87                               | 11.10              | 851   | 5,767                                    | 20.25                               |
| 2017 10             | 3,075                                    | 0.60                                | 11.20              | 2,488                                    | -4.19                               | 11.20              | 588   | 5,563                                    | -1.60                               |
| 2017 11             | 3,360                                    | 13.47                               | 11.70              | 2,738                                    | 4.25                                | 12.00              | 621   | 6,098                                    | 9.14                                |
| 2017 12             | 3,303                                    | 12.43                               | 11.20              | 2,720                                    | 10.23                               | 11.60              | 583   | 6,023                                    | 11.42                               |
| 2018 1              | 3,138                                    | 11.05                               | 11.46              | 2,619                                    | -5.43                               | 10.60              | 520   | 5,757                                    | 2.89                                |
| 2018 2              | 2,633                                    | 12.61                               | 11.78              | 2,424                                    | 6.64                                | 12.56              | 210   | 5,057                                    | 9.67                                |
| 2018 3              | 3,127                                    | 4.23                                | 10.43              | 2,842                                    | 11.88                               | 11.85              | 285   | 5,969                                    | 7.74                                |
| 2018 4              | 2,967                                    | 2.54                                | 11.10              | 2,656                                    | 8.24                                | 11.77              | 311   | 5,623                                    | 5.16                                |
| 2018 5              | 3,626                                    | 13.42                               | 12.45              | 2,948                                    | 13.37                               | 11.93              | 678   | 6,573                                    | 13.40                               |
| 2018 6              | 3,290                                    | 5.42                                | 11.65              | 2,535                                    | 15.05                               | 11.01              | 755   | 5,826                                    | 9.41                                |
| 2018 7              | 3,347                                    | 2.16                                | 11.80              | 3,281                                    | 43.09                               | 12.58              | 66  | 6,628                                    | 19.01                               |
| 2018 8              | 3,330                                    | 2.70                                | 11.77              | 3,044                                    | 12.74                               | 12.81              | 286   | 6,375                                    | 7.26                                |
| 2018 9              | 3,620                                    | 9.42                                | 12.22              | 3,163                                    | 28.69                               | 12.51              | 458   | 6,783                                    | 17.63                               |
| 2018 1-當月           | 29,080                                   | 6.90                                | 11.63              | 25,511                                   | 14.45                               | 11.95              | 3,568   | 54,591                                   | 10.30                               |

資料來源：財政部統計處，「107年9月海關進出口貿易統計速報」。

Source : Department of Statistics, Ministry of Finance, "Summary of Exports and Imports for September 2018".

表八：臺灣對日本之進出口狀況  
Table 8. External Trade by Major Country: Japan



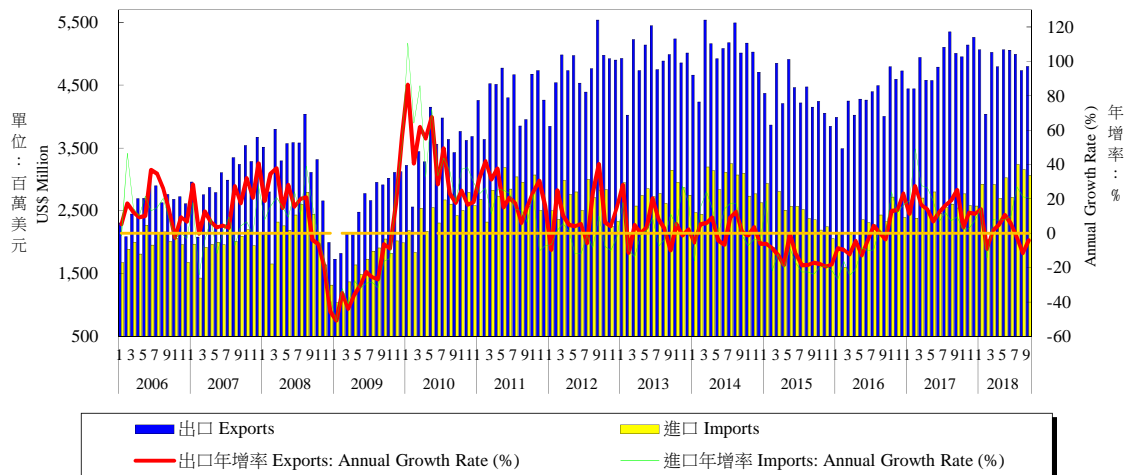
| 年與月<br>Year & Month | 出口<br>Exports                           |                                     |                    | 進口<br>Imports                           |                                     |                    | 貿易收支<br>(百萬元)<br>Trade Balance<br>(US\$ Million) | 總貿易額<br>Total Trade                     |                                     |
|---------------------|---|-------------------------------------|--------------------|---|-------------------------------------|--------------------|--|---|-------------------------------------|
|                     | 金額<br>(百萬元)<br>Amount<br>(US\$ Million) | 年增率<br>Annual<br>Growth Rate<br>(%) | 占比<br>Share<br>(%) | 金額<br>(百萬元)<br>Amount<br>(US\$ Million) | 年增率<br>Annual<br>Growth Rate<br>(%) | 占比<br>Share<br>(%) |  | 金額<br>(百萬元)<br>Amount<br>(US\$ Million) | 年增率<br>Annual<br>Growth Rate<br>(%) |
| 2001                | 13,033                                  | --                                  | 10.29              | 26,105                                  | --                                  | 23.82              | -13,072  | 39,138                                  | --                                  |
| 2002                | 12,395                                  | -4.89                               | 9.13               | 27,610                                  | 5.76                                | 23.98              | -15,215  | 40,005                                  | 2.22                                |
| 2003                | 12,479                                  | 0.68                                | 8.25               | 33,102                                  | 19.89                               | 25.41              | -20,623  | 45,581                                  | 13.94                               |
| 2004                | 13,953                                  | 11.81                               | 7.60               | 44,324                                  | 33.90                               | 25.84              | -30,370  | 58,277                                  | 27.85                               |
| 2005                | 15,249                                  | 9.28                                | 7.63               | 46,685                                  | 5.33                                | 25.18              | -31,436  | 61,934                                  | 6.27                                |
| 2006                | 16,509                                  | 8.26                                | 7.31               | 46,849                                  | 0.35                                | 22.69              | -30,340  | 63,357                                  | 2.30                                |
| 2007                | 16,167                                  | -2.07                               | 6.50               | 46,710                                  | -0.30                               | 20.90              | -30,543  | 62,878                                  | -0.76                               |
| 2008                | 17,857                                  | 10.45                               | 6.90               | 47,088                                  | 0.81                                | 19.30              | -29,231  | 64,944                                  | 3.29                                |
| 2009                | 14,632                                  | -18.06                              | 7.10               | 36,751                                  | -21.95                              | 20.70              | -22,120  | 51,383                                  | -20.88                              |
| 2010                | 18,645                                  | 27.43                               | 6.70               | 52,910                                  | 43.97                               | 20.60              | -34,266  | 71,555                                  | 39.26                               |
| 2011                | 19,242                                  | 3.20                                | 6.10               | 53,149                                  | 0.45                                | 18.50              | -33,906  | 72,391                                  | 1.17                                |
| 2012                | 19,624                                  | 1.98                                | 6.40               | 48,342                                  | -9.04                               | 17.40              | -28,718  | 67,966                                  | -6.11                               |
| 2013                | 19,391                                  | -1.19                               | 6.20               | 43,690                                  | -9.62                               | 15.70              | -24,299  | 63,081                                  | -7.19                               |
| 2014                | 20,142                                  | 3.87                                | 6.30               | 41,984                                  | -3.90                               | 14.90              | -21,842  | 62,127                                  | -1.51                               |
| 2015                | 19,592                                  | -2.73                               | 6.90               | 38,865                                  | -7.43                               | 16.40              | -19,273  | 58,457                                  | -5.91                               |
| 2016                | 19,551                                  | -0.21                               | 7.00               | 40,622                                  | 4.52                                | 17.60              | -21,071  | 60,173                                  | 2.93                                |
| 2017                | 20,782                                  | 6.30                                | 6.60               | 41,943                                  | 3.25                                | 16.20              | -21,161  | 62,726                                  | 4.24                                |
| 2017 1              | 1,661                                   | -1.64                               | 7.00               | 2,902                                   | -3.75                               | 14.34              | -1,240   | 4,563                                   | -2.99                               |
| 2017 2              | 1,472                                   | 6.74                                | 6.50               | 3,675                                   | 38.24                               | 19.10              | -2,203   | 5,147                                   | 27.48                               |
| 2017 3              | 1,682                                   | 3.79                                | 6.50               | 3,686                                   | 10.12                               | 17.00              | -2,005   | 5,368                                   | 8.05                                |
| 2017 4              | 1,664                                   | 9.21                                | 6.80               | 3,506                                   | 19.21                               | 16.30              | -1,842   | 5,170                                   | 15.80                               |
| 2017 5              | 1,611                                   | 3.93                                | 6.30               | 3,381                                   | -0.46                               | 15.30              | -1,771   | 4,992                                   | 0.92                                |
| 2017 6              | 1,724                                   | 6.85                                | 6.70               | 3,383                                   | -5.30                               | 16.90              | -1,659   | 5,107                                   | -1.52                               |
| 2017 7              | 1,942                                   | 5.64                                | 7.20               | 3,515                                   | -1.74                               | 16.20              | -1,572   | 5,457                                   | 0.77                                |
| 2017 8              | 1,719                                   | 5.94                                | 6.20               | 3,426                                   | -6.75                               | 15.60              | -1,708   | 5,145                                   | -2.86                               |
| 2017 9              | 1,971                                   | 25.46                               | 6.80               | 3,553                                   | 3.20                                | 16.00              | -1,582   | 5,524                                   | 10.17                               |
| 2017 10             | 1,721                                   | -5.95                               | 6.20               | 3,567                                   | -9.22                               | 16.00              | -1,846   | 5,288                                   | -8.18                               |
| 2017 11             | 1,820                                   | 8.90                                | 6.30               | 3,563                                   | 1.15                                | 15.60              | -1,743   | 5,384                                   | 3.64                                |
| 2017 12             | 1,796                                   | 9.34                                | 6.10               | 3,786                                   | 6.80                                | 16.20              | -1,990   | 5,582                                   | 7.61                                |
| 2018 1              | 1,901                                   | 14.43                               | 6.94               | 3,661                                   | 26.17                               | 14.82              | -1,760   | 5,562                                   | 21.89                               |
| 2018 2              | 1,616                                   | 9.79                                | 7.23               | 3,395                                   | -7.61                               | 17.60              | -1,779   | 5,011                                   | -2.64                               |
| 2018 3              | 1,997                                   | 18.74                               | 6.66               | 3,926                                   | 6.49                                | 16.37              | -1,929   | 5,922                                   | 10.33                               |
| 2018 4              | 1,792                                   | 7.70                                | 6.70               | 3,806                                   | 8.54                                | 16.87              | -2,014   | 5,598                                   | 8.27                                |
| 2018 5              | 1,876                                   | 16.48                               | 6.44               | 3,643                                   | 7.74                                | 14.74              | -1,767   | 5,519                                   | 10.56                               |
| 2018 6              | 2,089                                   | 21.17                               | 7.40               | 3,662                                   | 8.25                                | 15.90              | -1,573   | 5,751                                   | 12.61                               |
| 2018 7              | 2,042                                   | 5.12                                | 7.20               | 3,971                                   | 12.98                               | 15.22              | -1,929   | 6,013                                   | 10.18                               |
| 2018 8              | 1,849                                   | 7.61                                | 6.54               | 3,508                                   | 2.39                                | 14.76              | -1,659   | 5,357                                   | 4.13                                |
| 2018 9              | 2,040                                   | 3.51                                | 6.89               | 3,653                                   | 2.82                                | 14.45              | -1,613   | 5,693                                   | 3.07                                |
| 1-當月                | 17,202                                  | 11.37                               | 6.88               | 33,224                                  | 7.08                                | 15.57              | -16,022  | 50,426                                  | 8.51                                |

資料來源：財政部統計處，「107年9月海關進出口貿易統計速報」。

Source : Department of Statistics, Ministry of Finance, "Summary of Exports and Imports for September 2018".

表九：臺灣對東協之進出口狀況

Table 9. External Trade by Major Area: ASEAN



| 年與月<br>Year & Month | 出口<br>Exports                            |                                     |                    | 進口<br>Imports                            |                                     |                    | 貿易收支<br>Trade Balance<br>(US\$ Million) | 總貿易額<br>Total Trade                      |                                     |
|---------------------|--|-------------------------------------|--------------------|--|-------------------------------------|--------------------|---|--|-------------------------------------|
|                     | 金額<br>(百萬美元)<br>Amount<br>(US\$ Million) | 年增率<br>Annual<br>Growth Rate<br>(%) | 占比<br>Share<br>(%) | 金額<br>(百萬美元)<br>Amount<br>(US\$ Million) | 年增率<br>Annual<br>Growth Rate<br>(%) | 占比<br>Share<br>(%) |   | 金額<br>(百萬美元)<br>Amount<br>(US\$ Million) | 年增率<br>Annual<br>Growth Rate<br>(%) |
| 2001                | 15,416                                   | --                                  | 12.18              | 16,086                                   | --                                  | 14.68              | -670                                    | 31,503                                   | --                                  |
| 2002                | 16,533                                   | 7.24                                | 12.18              | 16,706                                   | 3.85                                | 14.51              | -174                                    | 33,239                                   | 5.51                                |
| 2003                | 18,250                                   | 10.39                               | 12.06              | 17,614                                   | 5.43                                | 13.52              | 636                                     | 35,864                                   | 7.90                                |
| 2004                | 24,240                                   | 32.82                               | 13.20              | 20,487                                   | 16.31                               | 11.94              | 3,752                                   | 44,727                                   | 24.71                               |
| 2005                | 27,586                                   | 13.81                               | 13.81              | 21,305                                   | 3.99                                | 11.49              | 6,282                                   | 48,891                                   | 9.31                                |
| 2006                | 31,494                                   | 14.17                               | 13.94              | 23,599                                   | 10.77                               | 11.43              | 7,896                                   | 55,093                                   | 12.69                               |
| 2007                | 36,619                                   | 16.27                               | 14.70              | 23,953                                   | 1.50                                | 10.70              | 12,666                                  | 60,572                                   | 9.95                                |
| 2008                | 39,249                                   | 7.18                                | 15.20              | 25,899                                   | 8.12                                | 10.60              | 13,350                                  | 65,148                                   | 7.55                                |
| 2009                | 30,814                                   | -21.49                              | 15.00              | 20,004                                   | -22.76                              | 11.30              | 10,810                                  | 50,818                                   | -22.00                              |
| 2010                | 42,317                                   | 37.33                               | 15.20              | 29,145                                   | 45.70                               | 11.40              | 13,172                                  | 71,462                                   | 40.62                               |
| 2011                | 52,133                                   | 23.20                               | 16.70              | 33,110                                   | 13.61                               | 11.50              | 19,023                                  | 85,243                                   | 19.29                               |
| 2012                | 57,088                                   | 9.50                                | 18.60              | 31,854                                   | -3.79                               | 11.50              | 25,234                                  | 88,942                                   | 4.34                                |
| 2013                | 59,220                                   | 3.73                                | 19.00              | 33,059                                   | 3.78                                | 11.90              | 26,160                                  | 92,279                                   | 3.75                                |
| 2014                | 60,172                                   | 1.61                                | 18.80              | 34,725                                   | 5.04                                | 12.30              | 25,447                                  | 94,897                                   | 2.84                                |
| 2015                | 51,639                                   | -14.18                              | 18.10              | 29,039                                   | -16.38                              | 12.20              | 22,601                                  | 80,678                                   | -14.98                              |
| 2016                | 51,291                                   | -0.67                               | 18.30              | 27,155                                   | -6.49                               | 11.80              | 24,137                                  | 78,446                                   | -2.77                               |
| 2017                | 58,573                                   | 14.20                               | 18.50              | 31,028                                   | 14.27                               | 12.00              | 27,544                                  | 89,601                                   | 14.22                               |
| 2017                | 1  | 4,443                               | 11.37              | 18.71                                    | 2,551                               | 18.95              | 1,891                                   | 6,994                                    | 14.02                               |
|                     | 2  | 4,443                               | 27.42              | 19.60                                    | 2,381                               | 49.23              | 2,061                                   | 6,824                                    | 34.27                               |
|                     | 3  | 4,939                               | 16.27              | 19.20                                    | 2,705                               | 27.80              | 2,235                                   | 7,644                                    | 20.11                               |
|                     | 4  | 4,576                               | 13.82              | 18.80                                    | 2,507                               | 26.34              | 2,069                                   | 7,084                                    | 17.96                               |
|                     | 5  | 4,573                               | 6.94               | 17.90                                    | 2,801                               | 18.88              | 1,772                                   | 7,374                                    | 11.18                               |
|                     | 6  | 4,787                               | 12.26              | 18.50                                    | 2,465                               | 6.82               | 2,322                                   | 7,252                                    | 10.35                               |
|                     | 7  | 5,104                               | 16.17              | 18.80                                    | 2,547                               | 12.09              | 2,557                                   | 7,651                                    | 14.78                               |
|                     | 8  | 5,350                               | 19.03              | 19.30                                    | 2,607                               | 7.20               | 2,743                                   | 7,957                                    | 14.88                               |
|                     | 9  | 5,007                               | 25.06              | 17.30                                    | 2,543                               | 9.44               | 2,464                                   | 7,549                                    | 19.32                               |
|                     | 10                                       | 4,950                               | 3.29               | 18.00                                    | 2,767                               | 1.82               | 2,183                                   | 7,717                                    | 2.76                                |
|                     | 11                                       | 5,138                               | 11.84              | 17.80                                    | 2,580                               | 2.69               | 2,558                                   | 7,718                                    | 8.60                                |
|                     | 12                                       | 5,263                               | 11.30              | 17.80                                    | 2,576                               | 7.62               | 2,687                                   | 7,838                                    | 10.07                               |
| 2018                | 1  | 5,065                               | 14.00              | 18.50                                    | 2,923                               | 14.55              | 2,142                                   | 7,987                                    | 14.20                               |
|                     | 2  | 4,040                               | -9.07              | 18.07                                    | 2,037                               | -14.46             | 2,003                                   | 6,077                                    | -10.95                              |
|                     | 3  | 5,021                               | 1.66               | 16.74                                    | 2,914                               | 7.74               | 2,107                                   | 7,935                                    | 3.81                                |
|                     | 4  | 4,795                               | 4.77               | 17.94                                    | 2,696                               | 7.53               | 2,098                                   | 7,491                                    | 5.75                                |
|                     | 5  | 5,061                               | 10.67              | 17.38                                    | 3,025                               | 8.02               | 2,036                                   | 8,087                                    | 9.67                                |
|                     | 6  | 5,057                               | 5.64               | 17.91                                    | 2,711                               | 9.98               | 2,346                                   | 7,768                                    | 7.12                                |
|                     | 7  | 4,992                               | -2.20              | 17.60                                    | 3,237                               | 27.09              | 1,755                                   | 8,228                                    | 7.55                                |
|                     | 8  | 4,734                               | -11.52             | 16.73                                    | 3,158                               | 21.17              | 1,576                                   | 7,892                                    | -0.81                               |
|                     | 9  | 4,798                               | -4.17              | 16.20                                    | 3,061                               | 20.38              | 1,737                                   | 7,859                                    | 4.10                                |
| 1-當月                | 43,562                                   | 0.79                                | 17.42              | 25,762                                   | 11.49                               | 12.07              | 17,801                                  | 69,324                                   | 4.52                                |

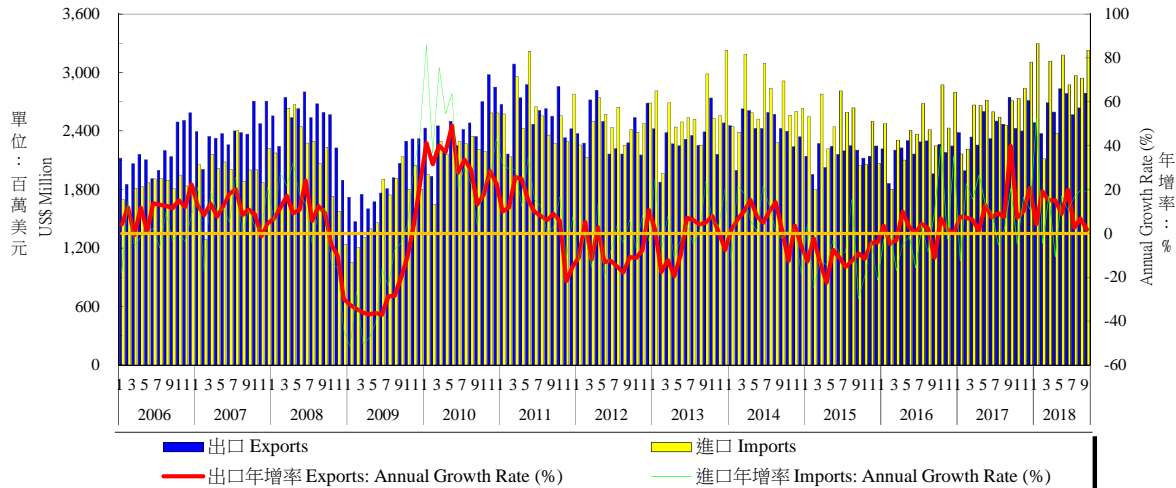
資料來源：財政部統計處，「107年9月海關進出口貿易統計速報」。

說明：東協包括新加坡、馬來西亞、菲律賓、泰國、印尼、越南、汶萊、寮國、緬甸及柬埔寨。

Source：Department of Statistics, Ministry of Finance, "Summary of Exports and Imports for September 2018".

Note：「ASEAN」 refers to Singapore, Malaysia, Philippines, Thailand, Indonesia, Vietnam, Brunei, Laos, Myanmar and Cambodia.

表十：臺灣對歐洲之進出口狀況  
Table 10. External Trade by Major Area: Europe



| 年與月<br>Year & Month | 出口 Exports                               |                                     |                    | 進口 Imports                               |                                     |                    | 貿易收支<br>(百萬美元)<br>Trade Balance<br>(US\$ Million) | 總貿易額<br>Total Trade                      |                                     |
|---------------------|--|-------------------------------------|--------------------|--|-------------------------------------|--------------------|---|--|-------------------------------------|
|                     | 金額<br>(百萬美元)<br>Amount<br>(US\$ Million) | 年增率<br>Annual<br>Growth Rate<br>(%) | 占比<br>Share<br>(%) | 金額<br>(百萬美元)<br>Amount<br>(US\$ Million) | 年增率<br>Annual<br>Growth Rate<br>(%) | 占比<br>Share<br>(%) |   | 金額<br>(百萬美元)<br>Amount<br>(US\$ Million) | 年增率<br>Annual<br>Growth Rate<br>(%) |
| 2001                | 19,989                                   | --                                  | 15.79              | 15,168                                   | --                                  | 13.84              | 4,821   | 35,157                                   | --                                  |
| 2002                | 18,808                                   | -5.91                               | 13.85              | 14,851                                   | -2.09                               | 12.90              | 3,957   | 33,659                                   | -4.26                               |
| 2003                | 20,765                                   | 10.41                               | 13.72              | 16,459                                   | 10.83                               | 12.64              | 4,306   | 37,224                                   | 10.59                               |
| 2004                | 23,820                                   | 14.71                               | 12.97              | 21,520                                   | 30.75                               | 12.54              | 2,300   | 45,340                                   | 21.80                               |
| 2005                | 23,642                                   | -0.75                               | 11.83              | 22,142                                   | 2.89                                | 11.94              | 1,499   | 45,784                                   | 0.98                                |
| 2006                | 26,151                                   | 10.61                               | 11.58              | 21,918                                   | -1.01                               | 10.62              | 4,233   | 48,069                                   | 4.99                                |
| 2007                | 28,751                                   | 9.94                                | 11.60              | 23,996                                   | 9.48                                | 10.80              | 4,755   | 52,746                                   | 9.73                                |
| 2008                | 30,024                                   | 4.43                                | 11.60              | 24,982                                   | 4.11                                | 10.20              | 5,042   | 55,006                                   | 4.28                                |
| 2009                | 22,726                                   | -24.31                              | 11.00              | 19,776                                   | -20.84                              | 11.10              | 2,949   | 42,502                                   | -22.73                              |
| 2010                | 29,546                                   | 30.01                               | 10.60              | 26,934                                   | 36.20                               | 10.50              | 2,612   | 56,481                                   | 32.89                               |
| 2011                | 31,427                                   | 6.37                                | 10.00              | 30,775                                   | 14.26                               | 10.70              | 652   | 62,202                                   | 10.13                               |
| 2012                | 28,897                                   | -8.05                               | 9.40               | 29,507                                   | -4.12                               | 10.60              | -610  | 58,404                                   | -6.11                               |
| 2013                | 27,906                                   | -3.43                               | 9.00               | 31,012                                   | 5.10                                | 11.20              | -3,106  | 58,918                                   | 0.88                                |
| 2014                | 29,122                                   | 4.36                                | 9.10               | 32,045                                   | 3.33                                | 11.40              | -2,923  | 61,168                                   | 3.82                                |
| 2015                | 25,964                                   | -10.85                              | 9.10               | 28,499                                   | -11.07                              | 12.00              | -2,535  | 54,462                                   | -10.96                              |
| 2016                | 26,221                                   | 0.99                                | 9.40               | 28,924                                   | 1.49                                | 12.50              | -2,704  | 55,145                                   | 1.25                                |
| 2017                | 29,155                                   | 11.19                               | 9.20               | 31,423                                   | 8.64                                | 12.10              | -2,268  | 60,578                                   | 9.85                                |
| 2017                | 1  | 2,385                               | 7.56               | 2,166                                    | -12.54                              | 10.71              | 218   | 4,551                                    | -3.05                               |
|                     | 2  | 1,996                               | 7.18               | 2,216                                    | 22.75                               | 11.50              | -220  | 4,211                                    | 14.85                               |
|                     | 3  | 2,339                               | 6.19               | 2,668                                    | 15.67                               | 12.30              | -329  | 5,007                                    | 11.04                               |
|                     | 4  | 2,255                               | 1.31               | 2,664                                    | 26.69                               | 12.40              | -408  | 4,919                                    | 13.63                               |
|                     | 5  | 2,602                               | 12.91              | 2,715                                    | 12.75                               | 12.30              | -113  | 5,317                                    | 12.83                               |
|                     | 6  | 2,321                               | 7.28               | 2,598                                    | 9.64                                | 13.00              | -276  | 4,919                                    | 8.51                                |
|                     | 7  | 2,502                               | 9.29               | 2,542                                    | -5.27                               | 11.70              | -40   | 5,045                                    | 1.44                                |
|                     | 8  | 2,471                               | 7.52               | 2,461                                    | 1.88                                | 11.20              | 10  | 4,932                                    | 4.63                                |
|                     | 9  | 2,745                               | 39.91              | 2,711                                    | 20.41                               | 12.20              | 34  | 5,455                                    | 29.49                               |
|                     | 10                                       | 2,426                               | 7.12               | 2,737                                    | -4.76                               | 12.30              | -311  | 5,163                                    | 0.47                                |
|                     | 11                                       | 2,400                               | 9.98               | 2,839                                    | 16.71                               | 12.40              | -439  | 5,239                                    | 13.53                               |
|                     | 12                                       | 2,713                               | 20.72              | 3,106                                    | 10.99                               | 13.30              | -393  | 5,819                                    | 15.32                               |
| 2018                | 1  | 2,487                               | 4.30               | 3,298                                    | 52.22                               | 13.35              | -811  | 5,785                                    | 27.11                               |
|                     | 2  | 2,377                               | 19.08              | 2,117                                    | -4.45                               | 10.97              | 260   | 4,494                                    | 6.70                                |
|                     | 3  | 2,692                               | 15.06              | 3,117                                    | 16.83                               | 13.00              | -425  | 5,809                                    | 16.00                               |
|                     | 4  | 2,595                               | 15.06              | 2,380                                    | -10.66                              | 10.55              | 215   | 4,975                                    | 1.13                                |
|                     | 5  | 2,835                               | 8.95               | 3,181                                    | 17.14                               | 12.87              | -346  | 6,015                                    | 13.14                               |
|                     | 6  | 2,784                               | 19.95              | 2,875                                    | 10.67                               | 12.48              | -90   | 5,659                                    | 15.05                               |
|                     | 7  | 2,568                               | 2.65               | 2,971                                    | 16.84                               | 11.39              | -402  | 5,539                                    | 9.80                                |
|                     | 8  | 2,637                               | 6.70               | 2,943                                    | 19.59                               | 12.38              | -307  | 5,580                                    | 13.13                               |
|                     | 9  | 2,790                               | 1.65               | 3,228                                    | 19.10                               | 12.77              | -438  | 6,019                                    | 10.32                               |
|                     | 1-當月                                     | 23,765                              | 9.94               | 26,109                                   | 14.81                               | 12.23              | -2,345  | 49,874                                   | 12.44                               |

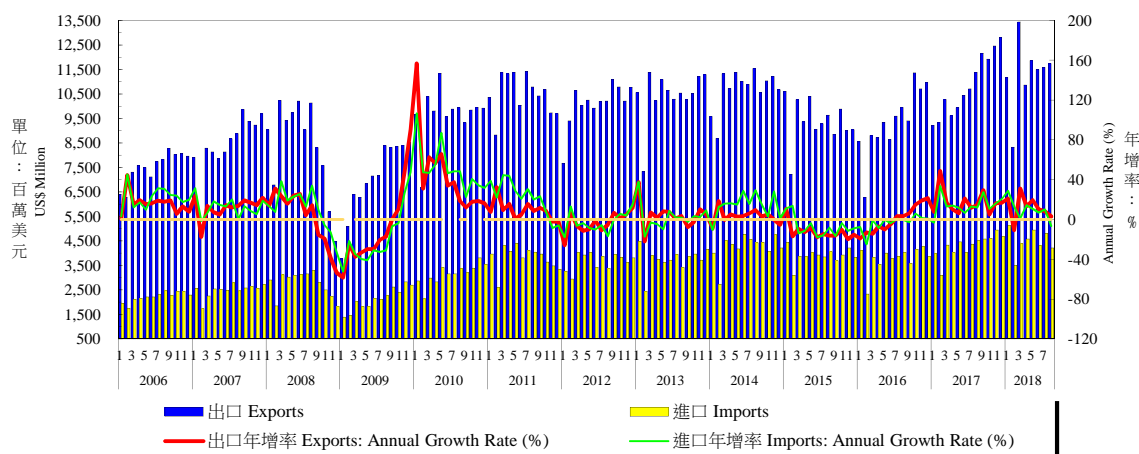
資料來源：財政部統計處，「107年9月海關進出口貿易統計速報」。

Source : Department of Statistics, Ministry of Finance, "Summary of Exports and Imports for September 2018".



表十一：兩岸經貿

Table 11. External Trade by Major Country: China



| 年與月<br>Year & Month | 出口<br>Exports                         |                               |                 | 進口<br>Imports                         |                               |                 | 貿易收支<br>(百萬美元)<br>Trade Balance (US\$ Million) | 人民幣兌美元<br>匯率<br>Exchange Rate (RMB/USD) | 中國大陸消費者物價指數年增率<br>China's Consumer Price Index: Annual Growth Rate (%) |
|---------------------|---------------------------------------|-------------------------------|-----------------|---------------------------------------|-------------------------------|-----------------|--|---|--|
|                     | 金額<br>(百萬美元)<br>Amount (US\$ Million) | 年增率<br>Annual Growth Rate (%) | 占比<br>Share (%) | 金額<br>(百萬美元)<br>Amount (US\$ Million) | 年增率<br>Annual Growth Rate (%) | 占比<br>Share (%) |  |   |  |
| 2001                | 33,810                                | --                            | 26.70           | 7,833                                 | --                            | 7.15            | 25,977   | 8.28                                    | 0.73   |
| 2002                | 43,739                                | 29.37                         | 32.21           | 9,795                                 | 25.04                         | 8.51            | 33,945   | 8.28                                    | -1.48  |
| 2003                | 54,192                                | 23.90                         | 35.81           | 12,836                                | 31.05                         | 9.86            | 41,356   | 8.28                                    | 1.95   |
| 2004                | 69,791                                | 28.78                         | 38.00           | 19,001                                | 48.03                         | 11.08           | 50,790   | 8.28                                    | 2.70   |
| 2005                | 78,276                                | 12.16                         | 39.19           | 22,063                                | 16.11                         | 11.90           | 56,214   | 8.19                                    | -2.01  |
| 2006                | 90,046                                | 15.04                         | 39.86           | 26,604                                | 20.58                         | 12.89           | 63,442   | 7.97                                    | -0.34  |
| 2007                | 101,203                               | 12.39                         | 40.70           | 29,857                                | 12.23                         | 13.40           | 71,346   | 7.61                                    | 3.25   |
| 2008                | 100,571                               | -0.62                         | 39.00           | 32,932                                | 10.30                         | 13.50           | 67,638   | 6.95                                    | 1.08   |
| 2009                | 84,640                                | -15.84                        | 41.20           | 25,602                                | -22.26                        | 14.40           | 59,038   | 6.83                                    | -6.22  |
| 2010                | 116,220                               | 37.31                         | 41.80           | 37,822                                | 47.73                         | 14.80           | 78,398   | 6.77                                    | 3.33   |
| 2011                | 125,971                               | 8.39                          | 40.30           | 45,681                                | 20.78                         | 15.90           | 80,290   | 6.46                                    | 5.41   |
| 2012                | 121,161                               | -3.82                         | 39.50           | 44,016                                | -3.64                         | 15.90           | 77,145   | 6.31                                    | 2.60   |
| 2013                | 125,305                               | 3.42                          | 40.20           | 44,931                                | 2.08                          | 16.20           | 80,375   | 6.20                                    | 2.62   |
| 2014                | 128,534                               | 2.58                          | 40.20           | 50,989                                | 13.48                         | 18.10           | 77,544   | 6.14                                    | 1.99   |
| 2015                | 112,540                               | -12.44                        | 39.40           | 46,734                                | -8.35                         | 19.70           | 65,806   | 6.23                                    | 1.44   |
| 2016                | 112,277                               | -0.23                         | 40.10           | 45,321                                | -3.02                         | 19.70           | 66,955   | 6.64                                    | 2.00   |
| 2017                | 130,213                               | 15.97                         | 41.00           | 51,555                                | 13.75                         | 19.90           | 78,658   | 6.76                                    | 1.60   |
| 2017 1              | 9,210                                 | 7.64                          | 38.79           | 3,977                                 | -3.16                         | 19.65           | 5,233  | 6.90                                    | 2.60   |
| 2017 2              | 9,333                                 | 48.78                         | 41.20           | 3,104                                 | 33.62                         | 16.10           | 6,229  | 6.87                                    | 0.80   |
| 2017 3              | 10,262                                | 16.72                         | 39.90           | 4,326                                 | 12.84                         | 19.90           | 5,936  | 6.90                                    | 1.00   |
| 2017 4              | 9,603                                 | 10.19                         | 39.50           | 4,011                                 | 13.82                         | 18.60           | 5,592  | 6.89                                    | 1.20   |
| 2017 5              | 9,938                                 | 6.31                          | 39.00           | 4,463                                 | 11.71                         | 20.20           | 5,476  | 6.89                                    | 1.50   |
| 2017 6              | 10,443                                | 20.97                         | 40.50           | 4,021                                 | 6.47                          | 20.10           | 6,422  | 6.81                                    | 1.60   |
| 2017 7              | 10,707                                | 11.66                         | 39.50           | 4,371                                 | 12.92                         | 20.20           | 6,336  | 6.77                                    | 1.40   |
| 2017 8              | 11,388                                | 14.46                         | 41.00           | 4,507                                 | 11.87                         | 20.50           | 6,881  | 6.67                                    | 1.80   |
| 2017 9              | 12,150                                | 29.38                         | 42.10           | 4,572                                 | 27.58                         | 20.60           | 7,578  | 6.57                                    | 1.60   |
| 2017 10             | 11,916                                | 4.92                          | 43.30           | 4,601                                 | 10.81                         | 20.60           | 7,315  | 6.62                                    | 1.90   |
| 2017 11             | 12,454                                | 16.29                         | 43.20           | 4,940                                 | 15.83                         | 21.60           | 7,514  | 6.63                                    | 1.70   |
| 2017 12             | 12,807                                | 16.84                         | 43.40           | 4,662                                 | 20.72                         | 19.90           | 8,145  | 6.59                                    | 1.80   |
| 2018 1              | 11,156                                | 21.12                         | 40.74           | 5,123                                 | 28.82                         | 20.75           | 6,033  | 6.43                                    | 1.50   |
| 2018 2              | 8,324                                 | -10.81                        | 37.23           | 3,502                                 | 12.81                         | 18.15           | 4,823  | 6.31                                    | 2.90   |
| 2018 3              | 13,432                                | 30.89                         | 44.79           | 4,375                                 | 1.14                          | 18.25           | 9,057  | 6.32                                    | 2.10   |
| 2018 4              | 10,866                                | 13.15                         | 40.65           | 4,580                                 | 14.20                         | 20.30           | 6,285  | 6.30                                    | 1.80   |
| 2018 5              | 11,859                                | 19.32                         | 40.72           | 4,944                                 | 10.79                         | 20.01           | 6,915  | 6.37                                    | 1.80   |
| 2018 6              | 11,491                                | 10.04                         | 40.69           | 4,302                                 | 6.99                          | 18.68           | 7,190  | 6.47                                    | 1.90   |
| 2018 7              | 11,584                                | 8.18                          | 40.84           | 4,811                                 | 10.07                         | 18.44           | 6,772  | 6.72                                    | 2.10   |
| 2018 8              | 11,734                                | 3.04                          | 41.47           | 4,204                                 | -6.72                         | 17.69           | 7,530  | 6.85                                    | 2.30   |
| 2018 9              | 12,384                                | 1.92                          | 41.81           | 4,914                                 | 7.49                          | 19.43           | 7,469  | 6.85                                    | --   |
| 1-當月                | 102,830                               | 10.53                         | 41.11           | 40,756                                | 9.12                          | 19.10           | 62,073   | 6.52                                    | 2.05   |

資料來源：財政部統計處，「107年9月海關進出口貿易統計速報」；中央銀行，「金融統計月報」；中國大陸國家統計局。

Source : Department of Statistics, Ministry of Finance, "Summary of Exports and Imports for September 2018".  
Central Bank of Republic of China (Taiwan), "Financial Statistics Monthly, Republic of China (Taiwan)".

† Central Bank of Republic of China (Taiwan); National Bureau of Statistics of China.