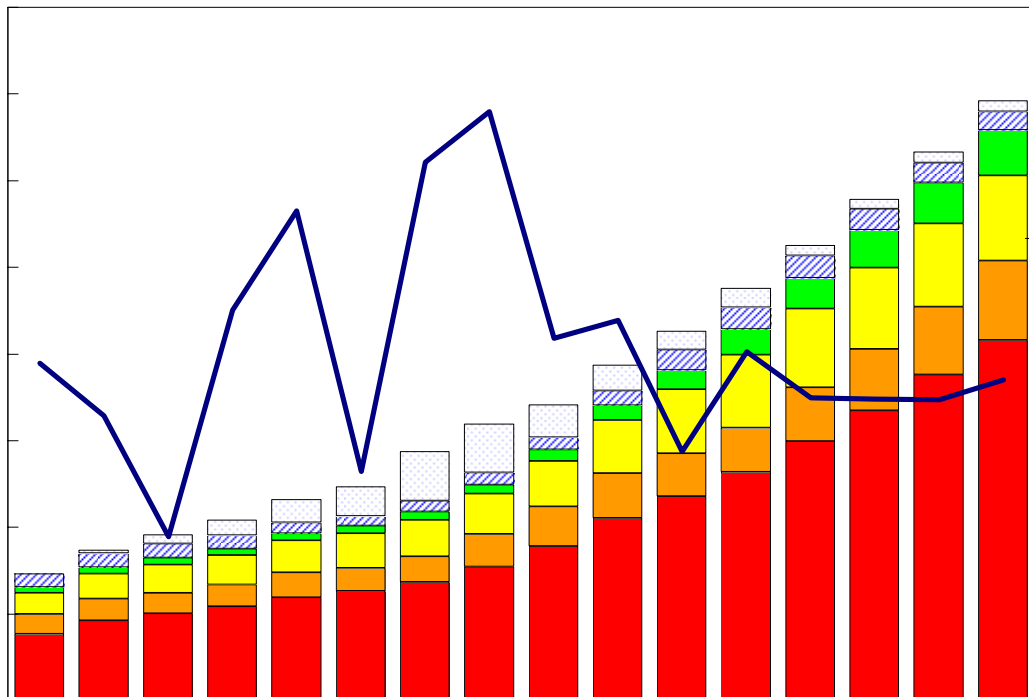


臺灣重要經濟變動指標

Major Economic Indicators for Taiwan



中華經濟研究院

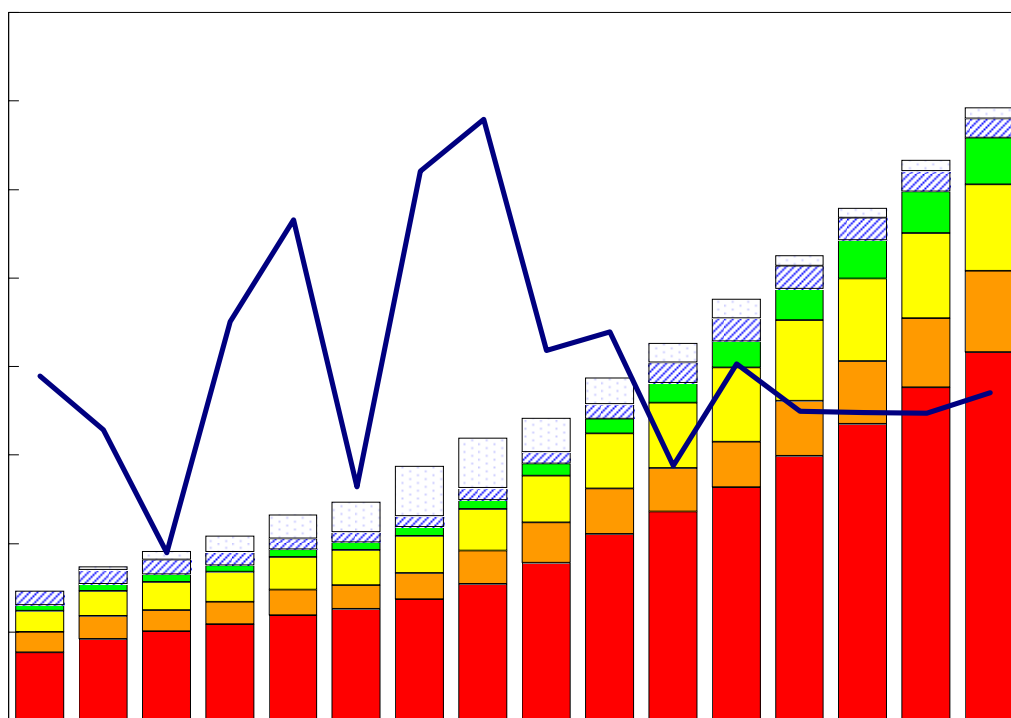
中華民國一〇一年八月

Chung-Hua Institution for Economic Research

August 2012

臺灣重要經濟變動指標

Major Economic Indicators for Taiwan



經濟展望中心 編製

The Center for Economic Forecasting

目次

Index

臺灣經濟預測.....I	Taiwan's Macroeconomic Forecasts.....I
表一：主要總體經濟指標.....2-3	Table 1 : GDP Components by Expenditure.....2-3
表二：各業產值概況.....4-5	Table 2 : GDP Components by Industry.....4-5
表三：生產概況.....6	Table 3 : Industry Indicators.....6
表四：景氣概況.....7	Table 4 : Cyclical Indicators.....7
表五：物價與金融概況.....8-9	Table 5 : Prices and Financial Situation.....8-9
表六：臺灣進出口貿易.....10	Table 6 : Foreign Trade Values.....10
表七：臺灣對美國之進出口狀況.....11	Table 7 : Trade with the United States11
表八：臺灣對日本之進出口狀況.....12	Table 8 : Trade with Japan.....12
表九：臺灣對德國之進出口狀況.....13	Table 9 : Trade with Germany.....13
表十：臺灣對香港之進出口狀況.....14	Table 10 : Trade with Hong Kong14
表十一：兩岸經貿.....15	Table 11 : Trade across the Taiwan Straits.....15

臺灣經濟預測

Taiwan's Macroeconomic Forecasts

	2012年季預測				2011年	2012年	2013年
	Year 2012 Quarterly				Annually		
	第1季	第2季	第3季	第4季	實際值	預測值	預測值
	Q1	Q2	Q3	Q4	2011	2012	2013
GDP, GNP及其組成, 新臺幣十億元(2006年基期), GDP, GNP and Major Components, Billions of 2006 NT Dollars							
實質GDP, Real GDP	3,538.90	3,652.97	3,903.77	4,035.29	14,782.36	15,130.93	15,780.20
年變動率, yoy(%)	0.39	0.18	3.48	5.13	4.03	2.36	4.29
實質GNP, Real GNP	3,671.34	3,738.54	3,970.04	4,119.04	15,145.08	15,498.95	16,147.08
年變動率, yoy(%)	-0.10	0.09	3.58	5.56	3.61	2.34	4.18
每人平均GNP, per capita GNP^[1]	5,129.10	4,972.93	5,338.33	5,578.48	20,689.23	21,018.83	22,444.83
年變動率, yoy(%)	-1.11	-2.96	0.93	9.62	7.84	1.59	6.78
民間消費, Private Consumption	2,010.23	1,949.98	2,048.08	2,027.02	7,885.05	8,035.31	8,235.11
年變動率, yoy(%)	1.72	1.65	1.83	2.41	2.97	1.91	2.49
固定資本形成, Total Fixed Investment	554.06	611.04	654.66	637.19	2,545.18	2,456.95	2,528.69
年變動率, yoy(%)	-10.54	-6.31	0.80	2.09	-3.89	-3.47	2.92
民間投資, Private Fixed Investment	469.25	478.99	521.13	453.72	1,967.03	1,923.10	2,020.09
年變動率, yoy(%)	-9.40	-5.12	2.24	4.41	-2.47	-2.23	5.04
財貨與服務之輸出, Exports, gds+serv	2,554.81	2,778.02	2,888.32	3,055.53	11,027.15	11,276.68	12,039.43
年變動率, yoy(%)	-3.29	-0.28	4.70	7.56	4.53	2.26	6.76
財貨與服務之輸入, Imports, gds+serv	1,948.78	2,078.99	2,109.41	2,130.87	8,314.19	8,268.05	8,668.96
年變動率, yoy(%)	-6.84	-2.63	2.02	5.52	-0.68	-0.56	4.85
海關出口 (fob, 億美元), Merchandise Export (fob, US \$bn)	708.24	760.10	812.46	814.34	3,082.58	3,095.15	3,310.18
年變動率, yoy(%)	-4.00	-5.37	3.48	7.65	12.26	0.41	6.95
海關進口 (cif, 億美元), Merchandise Import (cif, US \$bn)	651.66	704.62	729.28	721.85	2,814.37	2,807.41	2,968.83
年變動率, yoy(%)	-5.86	-5.75	3.19	8.10	12.02	-0.25	5.75
GDP平減指數, GDP Deflator	96.04	91.3	93.41	93.71	93.03	93.61	93.88
年變動率, yoy(%)	-0.02	-0.24	0.2	2.61	-3	0.63	0.29
躉售物價指數, Wholesale Price Index	112.77	111.72	116.59	116.59	112.41	114.42	118.01
年變動率, yoy(%)	1.95	-1.02	3.25	2.97	4.32	1.79	3.15
消費者物價指數, Consumer Price Index	107.43	108.63	109.75	110.10	106.98	108.98	111.01
年變動率, yoy(%)	1.28	1.66	2.46	2.08	1.43	1.87	1.87
M2貨幣存量(日平均), Money Stock (M2)	32,894.71	32,984.15	33,420.48	33,870.26	31,713.88	33,292.40	35,023.44
年變動率, yoy(%)	5.07	4.62	4.91	5.32	5.83	4.98	5.20
臺幣兌美元匯率, Exchange Rate(NT\$/US\$)	29.72	29.66	29.96	29.84	29.47	29.79	29.13
年變動率, yoy(%) ^[2]	-0.71	-2.63	-2.59	1.40	6.90	-1.11	2.23
商業本票利率, 31-90 day Commercial Paper Rate	0.96	0.96	0.96	1.02	0.85	0.97	1.21
年變動率, yoy(%)	39.13	15.21	5.36	4.80	46.55	14.46	23.91
失業率(%), Unemployment Rate(%)	4.20	4.20	4.32	4.23	4.38	4.24	4.25

說明:有關匯率變動百分比, 正值表示升值, 負數表示貶值比率。

資料來源:中華經濟研究院, 經濟展望中心, 2012年7月23日。

Source: CEF, CIER, July 23, 2012.

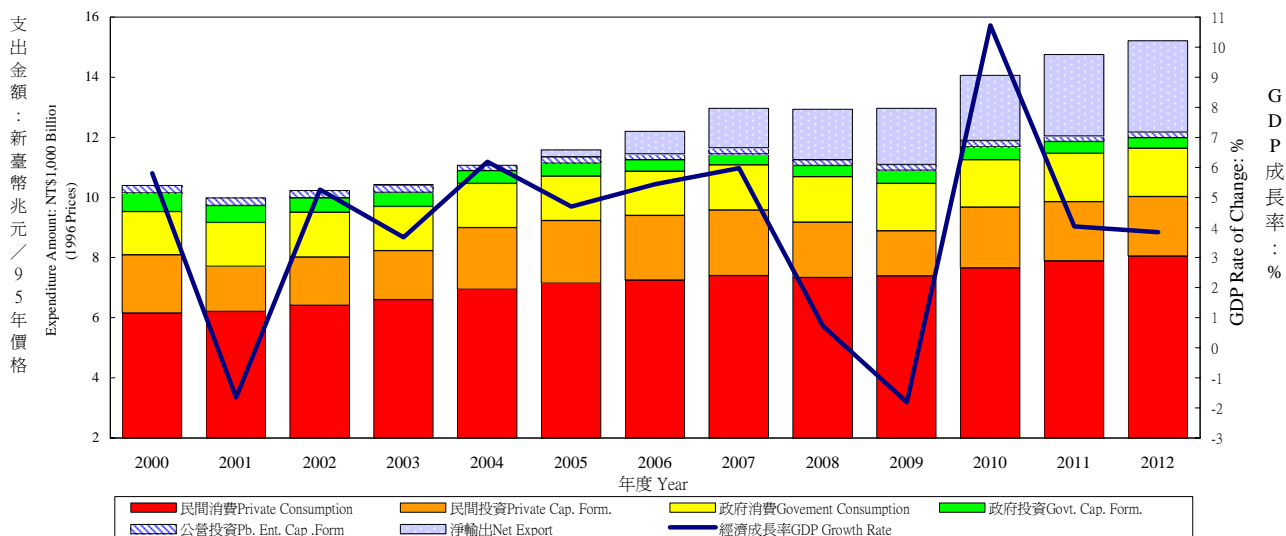
說明:[1]:有關每人平均GNP在此以美元表示。

[2]:有關匯率年增率(%), 正值表示升值, 負數表示貶值比率。

表一：主要總體經濟指標

Table 1. GDP Components by Expenditure

實質GDP各需求支出及成長率 Real GDP Expenditure & Growth Rate



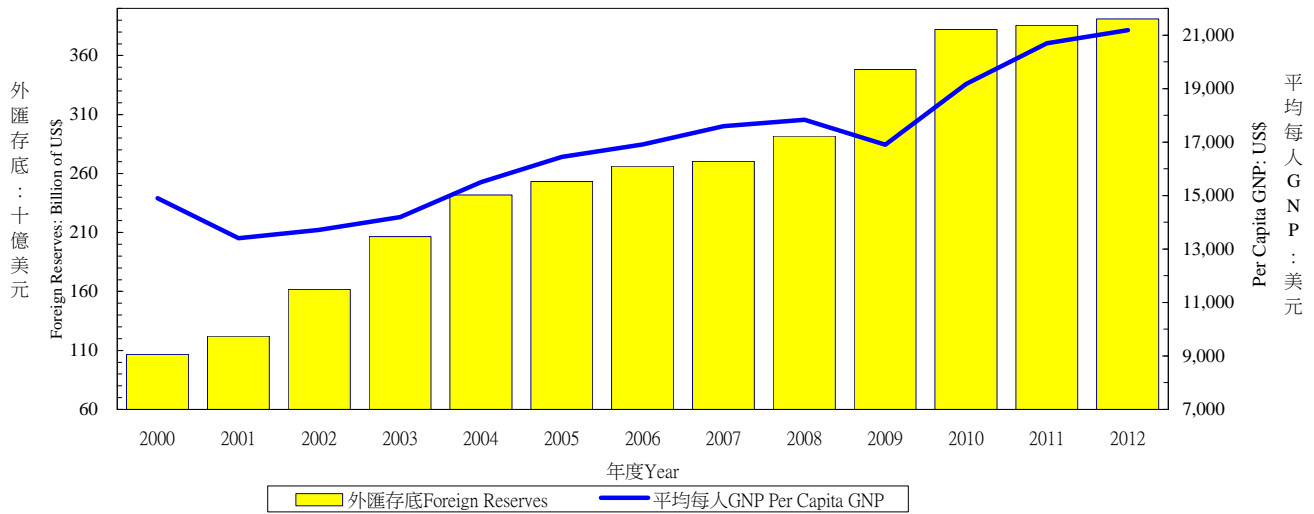
年與季 Year & Quarter	GDP 經濟成長率 Economic Growth Rate (%)	名目GDP (新台幣十億元) GDP (Bil.NT\$)	民間消費 Private Consumption Expenditure		民間固定投資 Private Spe. Gross Fixed Cap. Formation		商品及勞務輸出 Exports of Goods and Services		商品及勞務輸入 Imports of Goods and Services		政府消費 Government Consumption Expenditure	
			佔GDP /GDP (%)	年增率 Annual Rate of Change (%)	佔GDP /GDP (%)	年增率 Annual Rate of Change (%)	佔GDP /GDP (%)	年增率 Annual Rate of Change (%)	佔GDP /GDP (%)	年增率 Annual Rate of Change (%)	佔GDP /GDP (%)	年增率 Annual Rate of Change (%)
2000	5.80	10,187	58.78	4.75	17.66	13.19	52.93	18.31	50.76	15.34	13.38	1.21
2001	-1.65	9,930	60.70	0.98	13.64	-22.98	49.97	-8.60	44.52	-14.75	14.01	1.86
2002	5.26	10,412	59.91	3.26	13.81	7.12	52.22	11.37	45.03	6.21	13.57	1.55
2003	3.67	10,696	59.82	2.91	14.06	1.93	55.49	10.23	48.47	7.68	13.24	-1.23
2004	6.19	11,365	59.91	5.17	17.71	25.62	61.42	15.40	57.74	17.50	12.71	0.57
2005	4.70	11,740	60.40	2.90	17.21	1.53	62.53	7.78	58.12	3.16	12.46	0.19
2006	5.44	12,243	59.20	1.49	17.57	3.31	68.00	11.41	61.88	4.57	12.00	-0.71
2007	5.98	12,911	58.14	2.08	17.37	1.36	72.07	9.55	64.11	2.98	11.78	2.09
2008	0.73	12,620	60.30	-0.93	15.93	-15.58	72.97	0.87	68.05	-3.71	12.39	0.83
2009	-1.81	12,481	60.68	0.76	13.13	-18.15	62.49	-8.68	53.84	-13.10	12.98	4.01
2010	10.72	13,614	58.05	3.67	16.39	33.84	73.53	25.56	66.46	28.23	12.08	0.58
2011	4.04	13,757	59.60	2.95	16.06	-2.35	75.71	4.51	68.87	-0.64	12.32	1.86
2012	3.85	14,312	59.34	2.72	15.57	-1.16	76.28	4.38	68.12	0.90	12.05	-0.23
2011 1	6.62	3,386	60.24	4.61	17.00	10.55	73.82	11.20	68.26	7.55	13.27	0.62
2011 2	4.52	3,337	59.92	3.04	16.74	4.76	79.36	4.94	73.63	1.78	11.03	0.85
2011 3	3.45	3,517	59.49	3.24	16.46	-9.94	74.60	2.10	67.21	-3.72	11.81	2.43
2011 4	1.85	3,505	59.01	1.06	14.07	-13.19	75.52	0.86	66.82	-7.40	13.20	3.19
2012 1	0.39	3,399	61.47	1.72	15.70	-9.40	72.07	-3.29	66.12	-6.84	13.94	2.72
2012 2	0.77	3,366	60.99	1.67	17.10	0.55	79.27	1.00	73.67	-0.59	11.34	0.75
2012 3	4.00	3,661	59.32	2.09	16.73	3.49	76.34	5.98	68.53	3.33	11.47	-0.71
2012 4	6.65	3,754	57.58	2.64	14.45	8.81	76.72	8.42	66.80	5.02	12.25	-1.89

資料來源：行政院主計處，中華民國臺灣地區國民經濟動向統計季報，中央銀行經濟研究處，臺灣地區金融統計月報。

註：以上所為政府發佈資料，本院對GDP的預測列於本刊第一部份臺灣總體經濟預測。

Source: DGBAS, Executive Yuan, "Quarterly National Economic Trends, Taiwan Area, ROC"
The Central Bank of China, Financial Statistics, Taiwan District, The Republic of China

外匯存底及平均每人GNP Total Foreign Reserves & Per Capita GNP



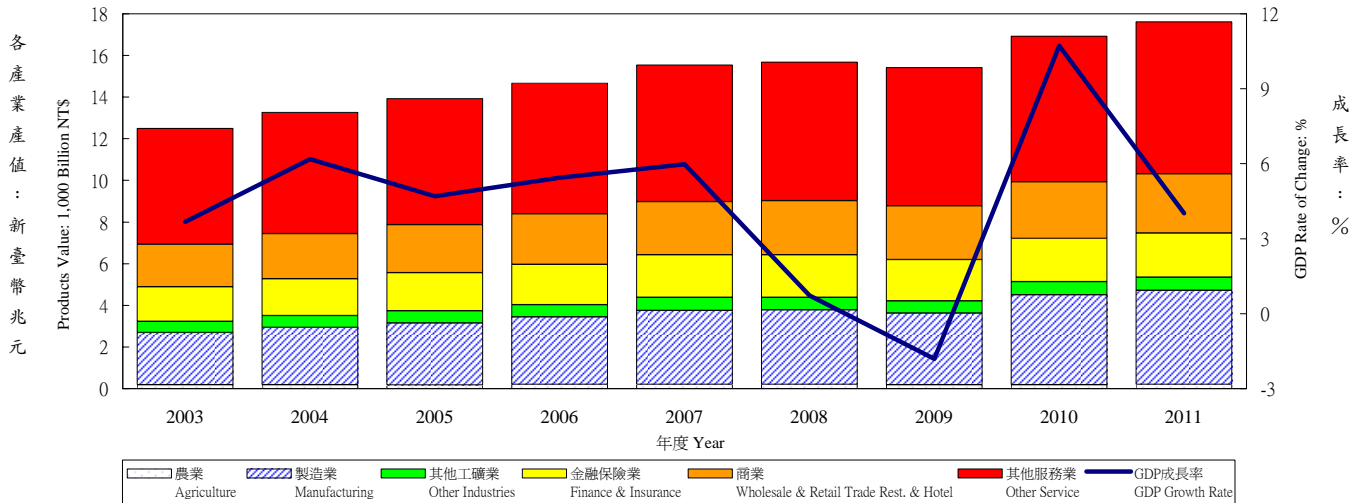
年與季 Year & Quarter	公營事業固定投資 Public Enter. Gross Fixed Capita Formation		政府固定投資 Government Gross Fixed Capita Formation		存貨增加 Increase in Stocks		國外要素淨收入 Net Factor Income From Abroad		平均每人 GNP (美元) Per Capita GNP (US\$)	外匯存底 (十億美元) Total Foreign Reserves (Billion of US\$)
	佔 GDP /GDP (%)	年增率 Annual Rate of Change (%)	佔 GDP /GDP (%)	年增率 Annual Rate of Change (%)	佔 GDP /GDP (%)	新台幣 百萬 (1996年價格) NT Mil (1996=100)	佔 GDP /GDP (%)	年增率 Annual Rate of Change (%)		
2000	2.32	-3.33	4.80	-4.17	0.90	107,491	1.37	52.36	14,906	106.7
2001	2.40	-0.06	4.44	-9.22	-0.64	-80,627	1.93	37.75	13,401	122.2
2002	2.21	-2.58	3.74	-13.18	-0.42	-59,812	2.33	26.51	13,716	161.7
2003	2.09	-4.70	3.65	-4.47	0.12	12,679	3.07	35.96	14,197	206.6
2004	1.63	-20.60	3.47	-9.59	0.88	104,189	3.27	11.46	15,503	241.7
2005	1.78	14.77	3.46	2.82	0.28	34,223	2.48	-23.31	16,449	253.3
2006	1.59	-8.61	3.14	-11.21	0.38	46,283	2.55	6.28	16,911	266.1
2007	1.57	1.57	3.07	-4.46	0.11	12,867	2.58	5.12	17,596	270.3
2008	1.66	-1.98	3.53	1.18	1.27	134,441	2.49	-8.47	17,833	291.7
2009	1.78	2.14	3.94	15.94	-1.16	-133,949	3.32	31.97	16,901	348.2
2010	1.77	8.00	3.58	-3.10	1.06	144,633	3.16	2.85	19,175	382.0
2011	1.53	-14.32	3.43	-5.41	0.22	34,102	2.85	-9.98	20,690	385.5
2012	1.51	0.31	3.03	-10.22	0.34	46,527	2.96	6.41	21,189	394.4
2011 1	0.95	-15.97	2.53		0.45	26,020	4.70	-2.02	5,187	392.6
2011 2	1.54	-15.01	3.62	-5.38	1.42	42,541	2.85	-12.29	5,125	400.3
2011 3	1.38	-3.47	3.34	-7.11	0.13	3,428	1.84	-21.39	5,289	389.2
2011 4	2.24	-18.92	4.23	-7.37	-1.46	-44,483	1.97	-16.27	5,089	385.5
2012 1	0.84	-14.96	2.13	-16.88	-0.03	5,208	4.19	-11.55	5,129	393.9
2012 2	1.57	-0.68	3.12	-14.80	0.27	7,956	2.77	-3.71	5,042	391.2
2012 3	1.39	3.09	3.03	-7.68	0.25	7,583	1.99	9.84	5,429	391.1
2012 4	2.24	6.05	3.69	-8.25	-0.13	-2,907	2.47	31.28	5,589	--

表二：各業產值概況

Table 2. GDP Components by Industry

GDP各產業產值及成長率

GDP Products Value & Growth Rate



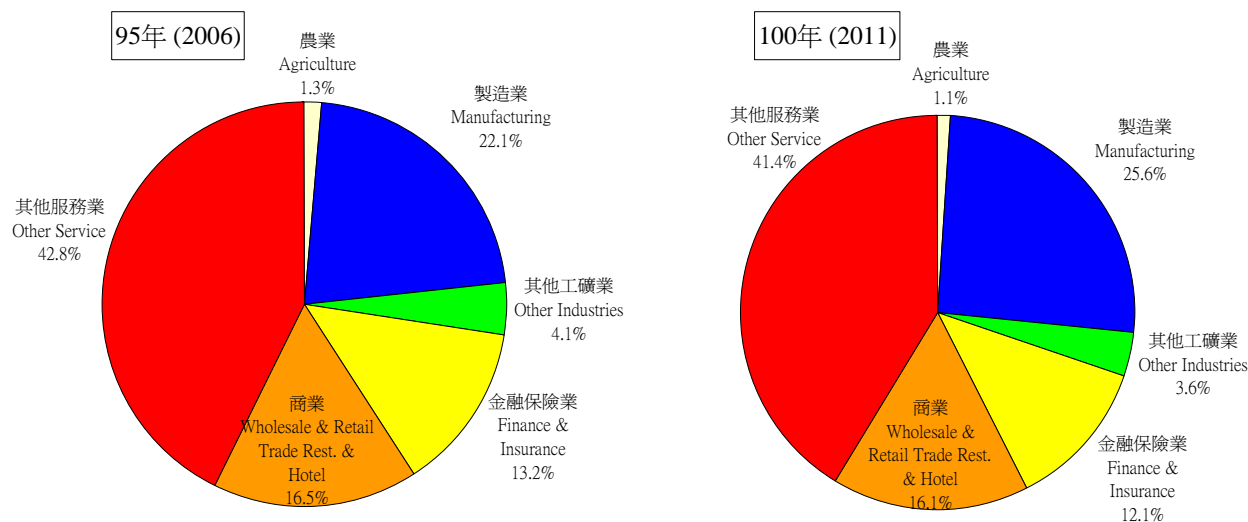
年與季 Year & Quarter	國內 生產毛額 GDP (新臺幣 十億元) 按95年價格 計算GDP (Bil. NT\$)	GDP 成長率 GDP Rate of Change (%)	產業 Sector											
			農業 Agriculture Hunting Forestry & Fishing		合計 Sub Total		礦業 Mining & Quarrying		製造業 Manufacturing		營造業 Construction		水電燃氣業 Electricity, Gas & Water	
			佔GDP /GDP (%)	年增率 Annual Rate of Change (%)	佔GDP /GDP (%)	年增率 Annual Rate of Change (%)	佔GDP /GDP (%)	年增率 Annual Rate of Change (%)	佔GDP /GDP (%)	年增率 Annual Rate of Change (%)	佔GDP /GDP (%)	年增率 Annual Rate of Change (%)	佔GDP /GDP (%)	年增率 Annual Rate of Change (%)
			佔GDP /GDP (%)	年增率 Annual Rate of Change (%)	佔GDP /GDP (%)	年增率 Annual Rate of Change (%)	佔GDP /GDP (%)	年增率 Annual Rate of Change (%)	佔GDP /GDP (%)	年增率 Annual Rate of Change (%)	佔GDP /GDP (%)	年增率 Annual Rate of Change (%)	佔GDP /GDP (%)	年增率 Annual Rate of Change (%)
2003	10,444	3.67	1.83	-1.65	29.08	7.67	0.52	-19.28	23.89	10.09	2.85	-3.91	1.81	7.27
2004	11,090	6.19	1.63	-5.39	30.00	9.54	0.48	-1.37	24.82	10.33	2.88	7.13	1.81	6.16
2005	11,612	4.70	1.49	-4.24	30.63	6.93	0.44	-5.42	25.58	7.90	2.78	1.26	1.83	5.88
2006	12,243	5.44	1.61	13.84	31.33	7.84	0.32	-22.32	26.46	9.04	2.72	2.91	1.84	5.71
2007	12,976	5.98	1.49	-2.42	32.23	9.02	0.37	20.39	27.41	9.82	2.60	1.53	1.85	6.57
2008	13,071	0.73	1.48	0.10	32.07	0.24	0.32	-11.23	27.49	0.99	2.44	-5.55	1.82	-0.61
2009	12,834	-1.81	1.46	-3.00	31.31	-4.15	0.34	4.44	26.79	-4.30	2.31	-6.84	1.86	0.13
2010	14,210	10.72	1.33	1.19	34.78	23.01	0.34	11.19	30.34	25.38	2.33	11.33	1.77	5.61
2011	14,784	4.04	1.31	1.89	34.90	4.39	0.34	1.86	30.59	4.91	2.23	-0.32	1.74	2.17
2010 1	3,306	12.90	1.27	0.51	31.65	34.35	0.31	9.66	27.07	39.05	2.55	14.73	1.72	8.57
2010 2	3,489	12.96	1.43	-0.76	34.23	28.12	0.31	-12.17	29.96	31.94	2.36	10.21	1.60	5.72
2010 3	3,647	11.24	1.22	8.52	36.08	18.83	0.42	26.11	31.22	20.26	2.50	12.86	1.94	4.59
2010 4	3,769	6.50	1.42	-1.99	36.77	15.54	0.32	23.57	32.70	16.71	1.93	7.09	1.82	4.22
2011 1	3,525	6.62	1.20	1.00	33.20	11.84	0.33	10.88	28.79	13.43	2.43	1.62	1.65	2.19
2011 2	3,646	4.52	1.41	3.11	34.83	6.35	0.30	-0.48	30.63	6.88	2.31	2.02	1.60	4.05
2011 3	3,772	3.45	1.17	-0.52	35.97	3.12	0.44	7.06	31.29	3.68	2.36	-2.40	1.89	0.37
2011 4	3,838	1.85	1.48	6.28	35.42	-1.91	0.29	-10.33	31.47	-1.99	1.83	-3.40	1.83	2.60
2012 1	3,539	0.39	1.14	-4.35	32.37	-2.12	0.32	-1.30	27.96	-2.51	2.38	-1.77	1.71	4.07

資料來源：行政院主計處，中華民國臺灣地區國民經濟動向統計季報

註：國內生產毛額除整體產業、政府服務生產者、對家庭服務之民間非營利機構生產者，以及家事服務生產者之生產毛額外，尚有進口稅、加值型營業稅，以及設算銀行服務費等三個其他項未列入本表。

Source：DGBAS, Executive Yuan, "Quarterly National Economic Trends, Taiwan Area, ROC".

Note：Import duties, Value added taxes and imputed bank services charge, are not shown in the table.



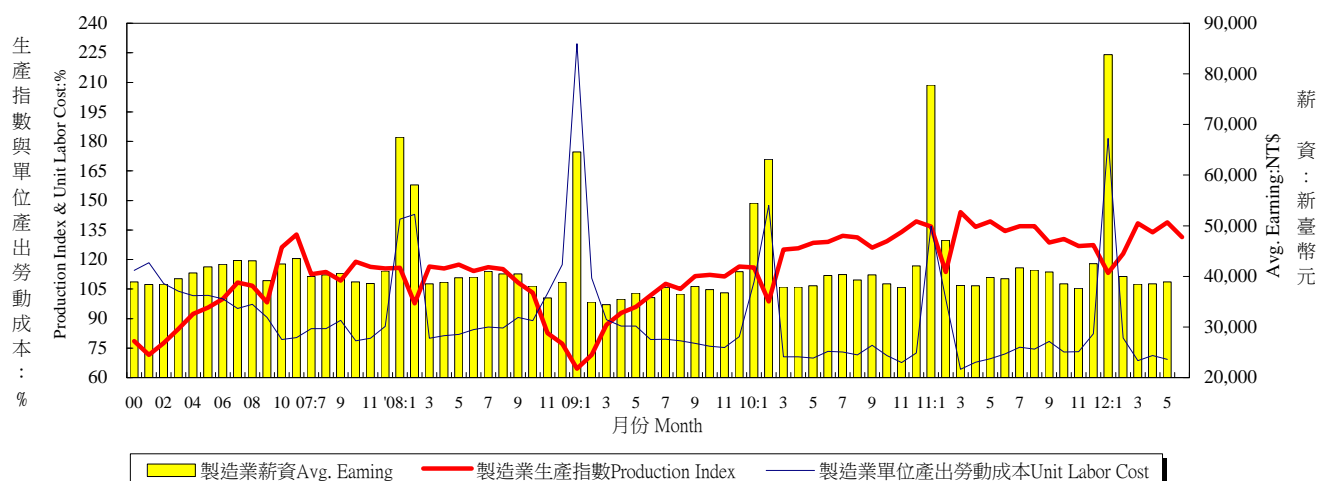
註：本圖型因未加上進口稅、加值型營業稅及減掉設算銀行服務費，所佔百分比與下表佔GDP百分比有些微差異。

Note: Import duties, Value added taxes and imputed bank services charge are not included; therefore the percentage is different from the table.

年與季 Year & Quarter	產業 Sector															
	服務業 Services															
	合計 Sub-Total		運輸倉儲及通訊業 Transportation Storage & Communication		商業 Wholesale & Retail Trade Rest. & Hotel		金融保險 不動產 Finance Insurance Real Estate		公共行政及國防 Public Administration & National Defense		教育服務業 Educational Services		醫療保健及社會工作服務業 Medical Treatment & Social Work		其他產業 Other Services	
估GDP /GDP (%)	年增率 Annual Rate of Change (%)	估GDP /GDP (%)	年增率 Annual Rate of Change (%)	估GDP /GDP (%)	年增率 Annual Rate of Change (%)	估GDP /GDP (%)	年增率 Annual Rate of Change (%)	估GDP /GDP (%)	年增率 Annual Rate of Change (%)	估GDP /GDP (%)	年增率 Annual Rate of Change (%)	估GDP /GDP (%)	年增率 Annual Rate of Change (%)	估GDP /GDP (%)	年增率 Annual Rate of Change (%)	
2003	69.09	2.22	6.95	2.56	19.60	1.69	15.90	2.80	8.51	2.45	5.02	4.77	3.31	0.78	9.78	1.10
2004	68.37	5.09	6.92	5.69	19.60	6.17	15.85	5.84	8.08	0.84	4.89	3.53	3.19	2.18	9.83	6.73
2005	67.87	3.94	6.76	2.33	19.87	6.15	15.80	4.34	7.84	1.54	4.75	1.59	2.99	-1.67	9.86	4.99
2006	67.06	4.17	6.61	3.12	19.79	5.00	15.82	5.58	7.43	-0.06	4.68	3.86	2.84	-0.08	9.89	5.75
2007	66.29	4.77	6.50	4.09	19.75	5.76	15.78	5.70	6.93	-1.16	4.53	2.65	2.81	4.92	10.00	7.13
2008	66.45	0.98	6.63	2.78	19.97	1.85	15.56	-0.64	6.93	0.79	4.53	0.72	2.87	2.98	9.96	0.36
2009	67.24	-0.66	6.79	0.56	20.12	-1.04	15.45	-2.49	7.12	0.84	4.73	2.44	3.07	4.79	9.96	-1.84
2010	63.89	5.21	6.62	8.02	19.12	5.19	14.60	4.57	6.63	3.14	4.31	1.01	2.82	1.77	9.79	8.85
2011	63.79	3.89	6.61	3.82	19.21	4.54	14.36	2.39	6.40	0.41	4.19	1.07	2.78	2.49	10.24	8.89
2010 1	67.09	5.22	6.86	10.41	20.26	5.91	15.04	7.38	6.69	2.17	4.69	1.73	2.79	-0.40	10.75	2.93
2010 2	64.34	6.58	6.55	9.69	19.00	7.58	14.93	4.14	6.86	3.07	3.98	1.39	2.87	3.07	10.15	12.36
2010 3	62.70	7.34	6.53	6.75	17.77	4.48	14.27	4.48	6.92	3.24	4.46	0.41	2.79	2.21	9.95	28.43
2010 4	61.81	1.95	6.57	5.67	19.54	3.11	14.21	2.57	6.09	4.05	4.14	0.61	2.82	2.08	8.45	-4.90
2011 1	65.60	4.26	6.68	3.86	20.40	7.35	14.74	4.50	6.34	1.00	4.44	0.88	2.79	6.58	10.21	1.24
2011 2	63.76	3.58	6.43	2.62	18.95	4.26	14.85	3.94	6.55	-0.13	3.86	1.37	2.80	2.02	10.32	6.23
2011 3	62.86	3.72	6.57	3.98	17.95	4.51	14.18	2.76	6.69	-0.10	4.36	1.16	2.71	0.54	10.41	8.19
2011 4	63.10	3.98	6.75	4.64	19.63	2.33	13.83	-0.85	6.04	0.95	4.11	1.00	2.80	1.24	9.95	19.99
2012 1	66.49	1.74	6.96	4.54	20.28	-0.21	14.55	-0.95	6.43	1.90	4.51	2.12	2.80	0.66	10.96	7.75

表三：生產概況

Table 3. Industry Indicators

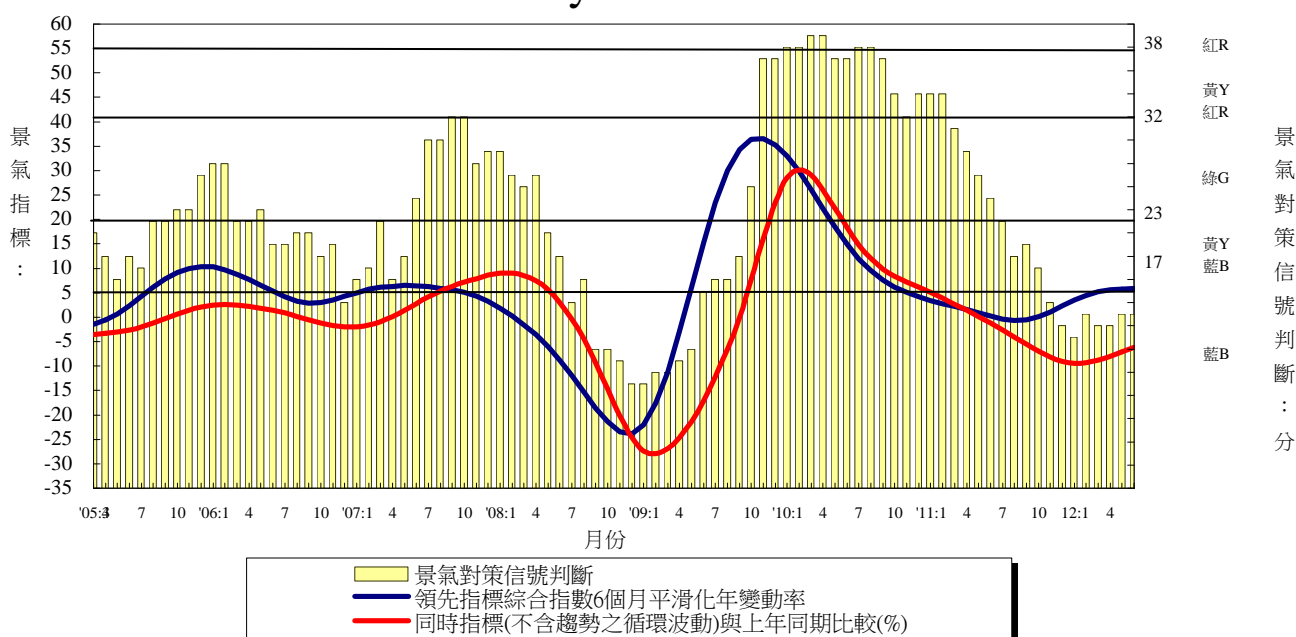


年與月 Year & Month	製造業生產 (基期95年=100) Mfg. Industrial Production (2006=100)		製造業重工業生產 (基期95年=100) Heavy Industry Production (2006=100)		製造業輕工業生產 (基期95年=100) Light Industry Production (2006=100)		製造業單位產出勞動成本 (基期95年=100) Unit labor cost in Manufacturing (2006=100)		製造業薪資 Average Earnings of Employees in Manufacturing	
	指數 Index (%)	年增率 Annual Rate of Change (%)	指數 Index (%)	年增率 Annual Rate of Change (%)	指數 Index (%)	年增率 Annual Rate of Change (%)	指數 Index (%)	年增率 Annual Rate of Change (%)	每人每月 (元) Wages per Month (NT\$)	年增率 Annual Rate of Change (%)
2001	71.51	-9.02	63.55	-8.80	106.19	-9.60	118.44	3.52	38,412	-1.29
2002	77.60	8.52	71.51	12.53	104.26	-1.82	107.78	-9.00	38,435	0.06
2003	84.71	9.16	80.15	12.08	104.82	0.54	103.93	-3.57	39,549	2.90
2004	92.31	8.97	88.99	11.03	107.10	2.18	101.69	-2.16	40,657	2.80
2005	95.69	3.66	93.95	5.57	103.43	-3.43	101.83	0.14	41,858	2.95
2006	100.00	4.50	100.00	6.44	100.00	-3.32	100.00	-1.80	42,393	1.28
2007	108.34	8.34	110.28	10.28	99.67	-0.33	95.06	-4.94	43,169	1.83
2008	106.65	-1.56	109.46	-0.74	94.10	-5.58	97.31	2.61	43,105	-0.22
2009	98.15	-7.97	100.80	-7.92	86.36	-8.23	90.55	-6.95	39,152	-9.17
2010	126.22	28.60	132.97	31.92	96.14	11.33	79.42	-12.29	42,420	8.35
2011	132.68	5.12	140.76	5.86	96.66	0.54	80.30	1.11	43,533	2.62
2011 7	136.84	3.60	145.70	4.67	97.35	-2.98	75.37	3.35	41,716	3.34
8	136.97	4.45	145.22	5.16	100.18	0.03	74.44	4.02	41,247	5.06
9	128.57	2.07	136.09	2.55	95.07	-0.84	78.43	2.64	40,868	1.47
10	130.46	0.91	138.24	1.46	95.83	-2.43	72.93	2.29	38,549	0.01
11	126.91	-5.29	133.81	-5.73	96.20	-2.49	73.20	8.17	37,669	-0.38
12	127.37	-8.58	133.43	-9.08	100.37	-5.54	82.23	13.47	42,503	1.11
2012 1	113.22	-17.18	119.98	-16.62	83.10	-20.59	181.43	32.54	83,789	7.67
2	122.98	8.18	130.89	6.34	87.71	22.23	80.11	-19.71	40,010	-15.07
3	138.43	-3.95	146.60	-4.24	102.03	-2.07	68.57	6.74	38,447	0.64
4	133.84	-2.02	142.00	-2.19	97.49	-0.89	71.14	4.80	38,512	0.94
5	138.91	-0.37	147.45	-0.64	100.87	1.48	69.29	-0.50	38,883	-2.22
6	131.39	-2.31	140.19	-1.97	92.19	-4.54	--	--	--	--
1-當月	129.80	-3.26	137.85	-3.45	93.90	-2.01	--	--	--	--

資料來源：經濟部統計處，臺灣地區工業生產統計月報，行政院主計處，臺灣地區薪資與生產力統計月報，人力資源統計月報。

Source : Department of Statistics, Ministry of Economic Affairs, "Industrial Production Statistics Monthly, Taiwan Area, ROC".

表四：景氣概況
Table 4. Cyclical Indicators



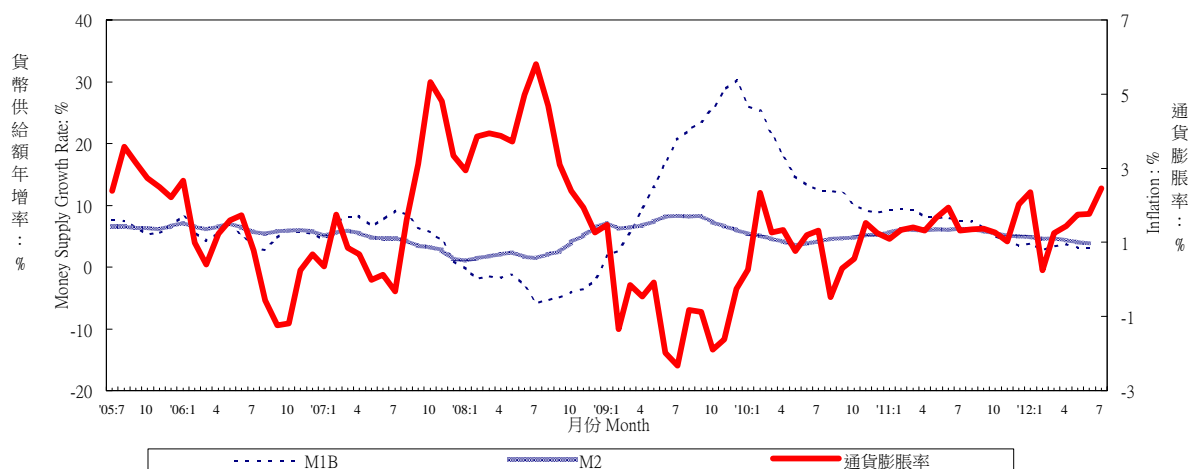
年與月	景氣指標				景氣對策信號判斷 (分)			失業率 (%)
	領先指標綜合指數	領先指標6個月平滑化年變動率	同時指標綜合指數	同時指標循環波動(不含趨勢)	顏色	代碼	分數	
1997	67.70	9.79	65.40	99.30	綠	G	27	2.72
1998	65.70	-3.12	68.20	98.60	黃藍	YB	20	2.69
1999	75.10	16.03	72.80	100.10	黃藍	YB	22	2.92
2000	79.20	2.44	80.90	107.80	綠	G	26	2.99
2001	69.80	-10.74	72.20	94.90	藍	B	10	4.57
2002	78.30	13.08	77.30	98.30	綠	G	23	5.17
2003	83.20	8.35	82.70	98.70	綠	G	23	4.99
2004	93.20	9.69	92.00	101.80	黃紅	YR	33	4.44
2005	95.50	3.80	96.80	100.20	黃藍	YB	22	4.13
2006	102.10	5.77	102.30	100.90	黃藍	YB	22	3.91
2007	107.50	5.33	108.30	104.20	綠	G	25	3.91
2008	99.80	5.01	105.60	101.20	黃藍	YB	19	4.14
2009	102.30	13.67	96.60	89.80	黃藍	YB	19	5.85
2010	123.60	15.84	122.40	104.90	黃紅	YR	37	5.21
2011	126.00	1.33	130.20	102.50	綠	G	24	4.39
2011 7	125.00	-0.40	129.90	102.40	綠	G	23	4.41
2011 8	124.90	-0.70	129.20	101.20	黃藍	YB	20	4.45
2011 9	125.10	-0.50	128.40	100.10	黃藍	YB	21	4.28
2011 10	125.50	0.10	127.80	99.00	黃藍	YB	19	4.30
2011 11	126.20	1.10	127.40	98.20	藍	B	16	4.28
2011 12	127.10	2.30	127.30	97.50	藍	B	14	4.18
2012 1	128.00	3.50	127.50	97.10	藍	B	13	4.18
2012 2	128.90	4.50	127.90	96.90	藍	B	15	4.25
2012 3	129.60	5.20	128.60	97.00	藍	B	14	4.17
2012 4	130.20	5.60	129.50	97.10	藍	B	14	4.10
2012 5	130.70	5.80	130.30	97.20	藍	B	15	4.12
2012 6	131.30	5.90	131.00	97.15	藍	B	15	4.21

資料來源：行政院經建會，台灣景氣指標，經濟部統計處，國內外經濟統計指標速報。

表五：物價與金融概況

Table 5. Prices and Financial Situation

貨幣供給額與通貨膨脹率 Money Supply Growth Rate and Inflation

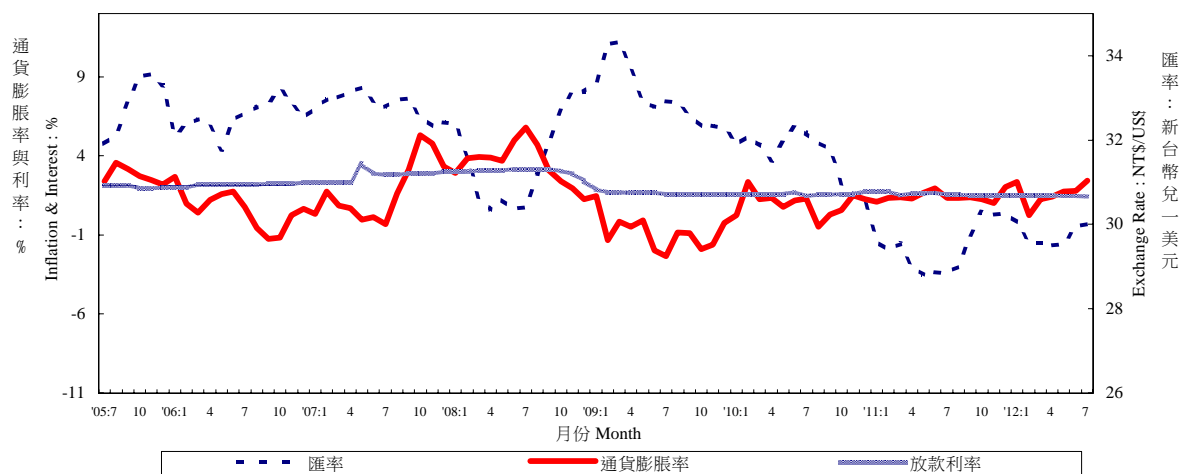


年與月 Year & Month	躉售物價 (基期90年=100) Wholesale Prices (2001=100)		消費者物價 (基期90年=100) Consumer Prices (2001=100)		貨幣供給額年增率 Money Supply (Annual Growth Rate)			
	指數 Index (%)	年增率 Annual Rate of Change (%)	指數 Index (%)	年增率 Annual Rate of Change (%)	M1A (%)	M1B (%)	M2 (%)	
2000	101.36	1.82	100.01	1.26	7.36	10.58	7.04	
2001	100.00	-1.34	100.00	-0.01	-4.69	-1.02	5.79	
2002	85.78	-14.22	99.80	-0.20	8.59	17.01	3.55	
2003	87.91	2.48	95.62	-4.19	11.28	11.82	3.77	
2004	94.09	7.03	97.17	1.61	21.10	18.98	7.45	
2005	94.67	0.61	99.41	2.31	7.65	7.10	6.22	
2006	100.00	5.64	100.00	0.60	5.72	5.30	6.22	
2007	106.47	6.47	101.80	1.80	6.80	6.44	4.25	
2008	111.95	5.15	105.39	3.53	0.97	-2.94	2.67	
2009	102.17	-8.73	104.47	-0.87	13.38	16.54	7.22	
2010	107.75	5.46	105.48	0.96	14.49	14.93	4.59	
2011	112.40	4.32	106.98	1.42	8.09	7.16	5.79	
2011	8	112.60	4.08	107.08	1.34	9.45	7.44	6.16
	9	113.99	5.08	107.22	1.37	8.98	6.28	5.85
	10	113.95	5.75	107.80	1.26	7.50	5.12	5.54
	11	113.03	4.91	107.77	1.03	6.37	4.22	5.07
	12	112.68	4.28	108.01	2.02	5.85	3.51	5.01
2012	1	112.76	4.37	108.35	2.36	4.22	3.86	4.90
	2	112.56	1.83	106.91	0.24	1.16	2.84	4.60
	3	112.99	-0.22	107.03	1.25	2.73	3.47	4.71
	4	112.93	-0.56	108.04	1.44	4.89	3.77	4.39
	5	112.20	-0.37	108.57	1.74	4.55	3.24	4.03
	6	110.33	-1.87	109.27	1.77	4.51	3.19	3.83
	7	110.24	-1.71	109.68	2.46	--	--	--
	1-7	112.00	0.18	108.26	1.61	--	--	--

資料來源：中央銀行經濟研究處，臺灣地區金融統計月報，臺灣證券交易所，證券統計資料月報。

Source : Economic Research Department, The Central Bank of China. Financial Statistics Monthly, Taiwan District ROC.

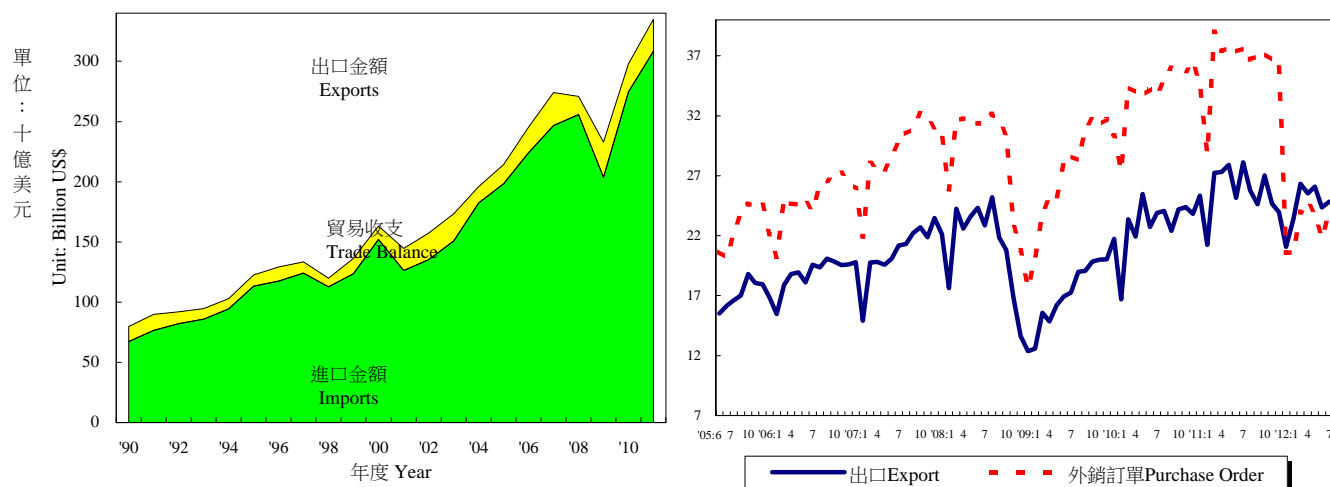
利率、通貨膨脹率與匯率
Interest Rate, Exchange Rate and Inflation



年與月 Year & Month	存款 加權平均利率 Weighted Average Interest Rates on Deposits (%)	基本放款利率 Short Term Loans (1 Year, Max) Interest Rate (%)	商業本票 初級市場 180天利率 Commercial Paper Primary Mkt.(180d) Interest Rate (%)	股票價格 Stock Prices		匯率 Exchange Rate		
				指數 Index (%)	年增率 Annual Rate of Change (%)	新臺幣 對一美元 NT\$ Against US\$	新臺幣 對一日元 NT\$ Against Yen	
2000	4.62	7.86	5.62	7,847	5.66	31.23	0.2897	
2001	4.09	7.78	4.17	4,907	-37.46	33.80	0.2781	
2002	1.83	7.46	2.75	5,247	6.91	34.58	0.2757	
2003	1.11	7.10	1.80	5,144	-1.96	34.42	0.2969	
2004	1.08	7.07	1.61	6,033	17.30	33.43	0.3089	
2005	1.34	7.32	2.00	6,090	0.94	32.18	0.2920	
2006	1.61	7.53	2.19	6,842	12.35	32.53	0.2797	
2007	1.90	7.93	2.74	8,489	24.08	32.84	0.2789	
2008	1.98	8.15	3.03	7,065	-16.78	31.53	0.3051	
2009	0.39	6.51	1.65	6,393	-9.51	33.06	0.3533	
2010	0.56	6.21	1.60	7,931	24.05	31.65	0.3605	
2011	0.83	6.36	1.59	8,186	3.22	29.47	0.3693	
2011	8	0.88	6.38	1.53	7,763	-1.53	29.00	0.3755
	9	0.88	6.38	1.52	7,385	-8.14	29.74	0.3871
	10	0.88	6.45	1.52	7,345	-10.54	30.28	0.3944
	11	0.88	6.45	1.51	7,275	-12.87	30.24	0.3898
	12	0.88	6.45	1.50	6,969	-20.60	30.27	0.3888
2012	1	0.88	6.46	1.50	7,177	-20.00	30.06	0.3905
	2	0.88	6.46	1.50	7,856	-10.14	29.56	0.3771
	3	0.88	6.46	1.50	8,020	-6.48	29.55	0.3584
	4	0.88	6.46	1.50	7,621	-14.00	29.50	0.3621
	5	0.88	6.46	1.47	7,357	-17.44	29.52	0.3703
	6	0.88	6.46	1.46	7,143	-18.36	29.95	0.3775
	7	--	6.56	1.44	7,187	-17.21	30.01	0.3800

表六：臺灣進出口貿易

Table 6. Foreign Trade Values



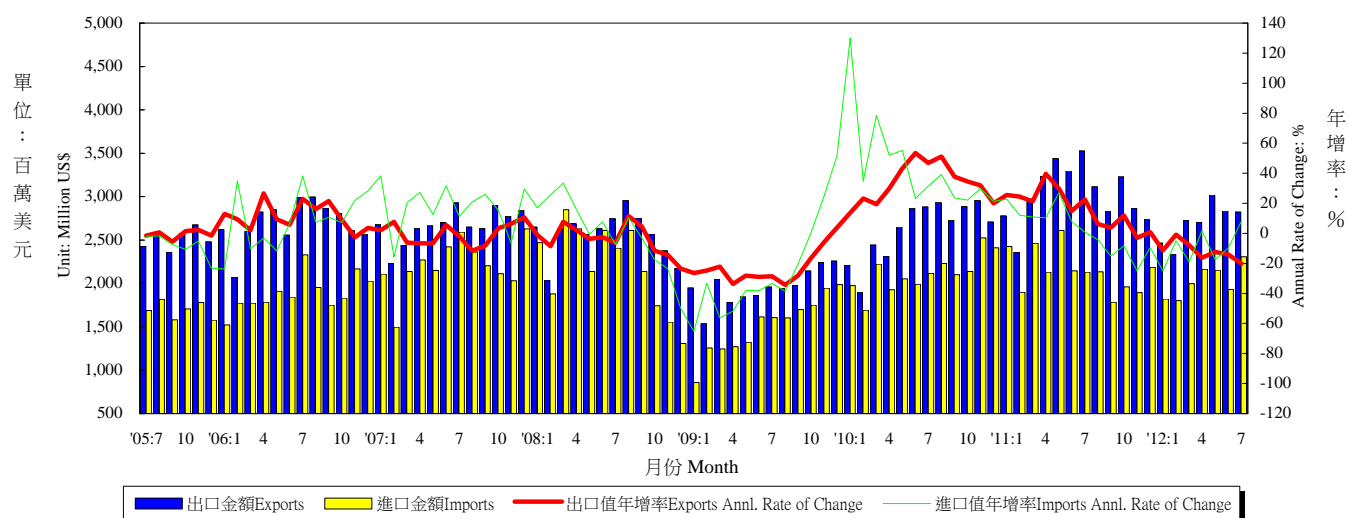
年 與 月 Year & Month	海關進出口貿易額 Export & Import Values of Foreign Trade					外銷訂單 Purchase Order for Exports	
	出口金額 (百萬美元) Amount (Mil. US\$)	年增率 Annual Rate of Change (%)	進口金額 (百萬美元) Amount (Mil. US\$)	年增率 Annual Rate of Change (%)	貿易收支 (百萬美元) Trade Balance	金額 (百萬美元) Amount (Mil. US\$)	年增率 Annual Rate of Change (%)
2000	151,950	22.80	140,732	26.56	11,218	153,424	20.36
2001	126,314	-16.87	107,971	-23.28	18,344	135,714	-11.54
2002	135,317	7.13	113,245	4.89	22,072	150,952	11.23
2003	150,600	11.29	128,010	13.04	22,590	170,028	12.64
2004	182,370	21.10	168,758	31.83	13,613	215,087	26.50
2005	198,432	8.81	182,614	8.21	15,817	256,393	19.20
2006	224,017	12.89	202,698	11.00	21,319	299,313	16.74
2007	246,677	10.12	219,252	8.17	27,425	345,814	15.54
2008	255,629	3.63	240,448	9.67	15,181	351,723	1.71
2009	203,675	-20.32	174,371	-27.48	29,304	322,440	-8.33
2010	274,601	34.82	251,236	44.08	23,364	406,720	26.14
2011	308,326	12.28	281,606	12.09	26,721	436,130	7.23
2011 8	25,780	7.20	23,135	6.24	2,645	36,710	5.25
9	24,611	9.89	22,803	10.59	1,808	36,958	2.72
10	27,025	11.72	23,685	11.72	3,340	37,206	4.38
11	24,674	1.24	21,463	-10.42	3,212	36,650	2.54
12	23,946	0.56	21,627	-2.69	2,319	36,305	-0.72
2012 1	21,079	-16.79	20,607	-12.13	472	31,484	-8.63
2	23,403	10.26	20,571	1.28	2,832	33,953	17.60
3	26,342	-3.23	23,988	-5.79	2,354	38,371	-1.58
4	25,518	-6.54	24,822	1.92	696	36,089	-3.52
5	26,097	-6.31	23,834	-10.48	2,263	36,474	-3.04
6	24,365	-3.16	21,789	-8.38	2,576	36,383	-2.62
7	24,847	-11.65	23,943	-3.21	904	--	--
1-7	171,651	-5.80	159,553	-5.44	12,097	--	--

資料來源：財政部統計處，臺灣地區進出口貿易統計月報，經濟部統計處，臺灣地區外銷訂單統計速報。

Source : Department of Statistics, Ministry of Finance, "Primary Statistics of Export & Import."

表七：臺灣對美國之進出口狀況

Table 7. Trade with the United States



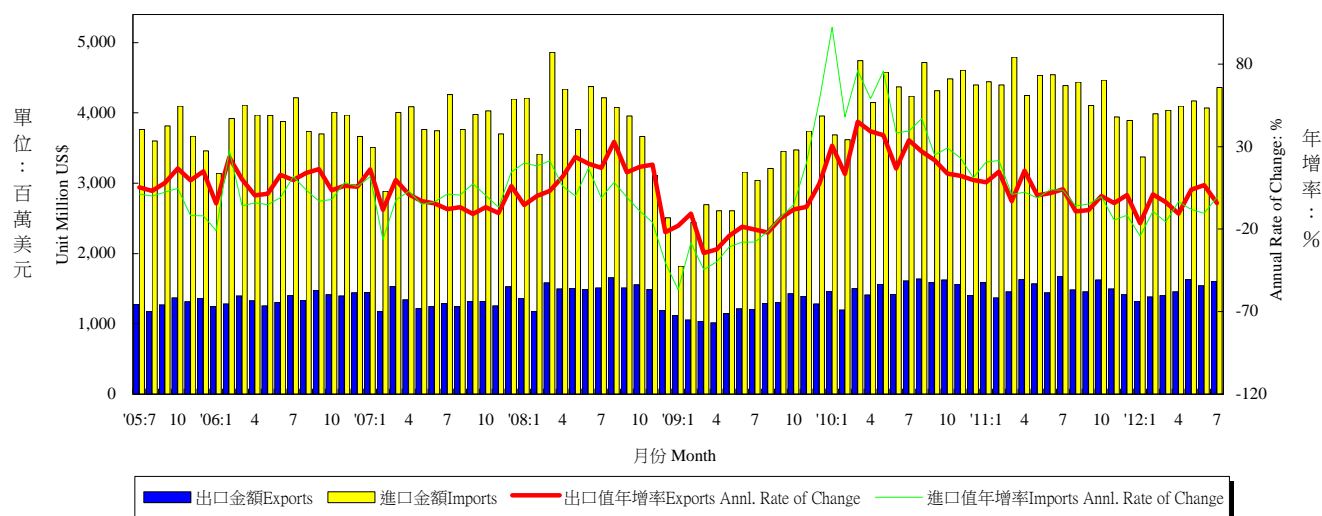
年與月 Year & Month	出口值 Exports			進口值 Imports			出入超 Trade Balance	貿易總額 Total Trade Amount	
	金額 (百萬美元) Amount (Mil. US\$)	年增率 Annual rate of change (%)	份額 Export share (%)	金額 (百萬美元) Amount (Mil. US\$)	年增率 Annual rate of change (%)	份額 Export share (%)	金額 (百萬美元) Amount (Mil. US\$)	金額 (百萬美元) Amount (Mil. US\$)	年增率 Annual rate of change (%)
2000	35,588	13.56	23.42	25,270	27.51	17.96	10,319	59,941	18.47
2001	28,136	-20.94	22.27	18,407	-27.16	17.05	9,728	45,884	-23.45
2002	27,365	-2.74	20.22	18,256	-0.82	16.12	9,110	45,621	-0.57
2003	26,554	-2.97	17.63	16,995	-6.90	13.28	9,558	43,549	-4.54
2004	28,751	8.27	15.77	21,780	28.16	12.91	6,971	50,531	16.03
2005	29,114	1.26	14.67	21,171	-2.80	11.59	7,943	50,285	-0.49
2006	32,361	11.15	14.45	22,664	7.06	11.18	9,696	55,025	9.43
2007	32,077	-0.88	13.00	26,508	16.96	12.09	5,569	58,585	6.47
2008	30,791	-4.01	12.05	26,327	-0.68	10.95	4,464	57,118	-2.51
2009	23,553	-23.51	11.56	18,154	-31.04	10.41	5,399	41,707	-26.98
2010	31,466	33.60	11.46	25,379	39.80	10.10	6,087	56,845	36.30
2011	36,365	15.57	11.79	25,759	1.49	9.15	10,607	62,124	9.29
2011 8	3,115	6.19	12.08	2,135	-4.23	9.23	980	5,250	1.69
9	2,827	3.77	11.49	1,785	-15.06	7.83	1,042	4,611	-4.43
10	3,228	11.90	11.95	1,959	-8.39	8.27	1,270	5,187	3.26
11	2,867	-3.10	11.62	1,894	-25.02	8.83	972	4,761	-13.20
12	2,734	0.93	11.42	2,185	-9.31	10.10	549	4,920	-3.89
2012 1	2,467	-11.25	11.70	1,822	-24.89	8.84	645	4,288	-17.61
2	2,336	-0.94	9.98	1,802	-4.95	8.76	534	4,139	-2.72
3	2,726	-7.95	10.35	1,997	-18.94	8.33	729	4,724	-12.94
4	2,706	-16.31	10.60	2,164	1.61	8.72	541	4,870	-9.20
5	3,015	-12.30	11.55	2,153	-17.47	9.03	863	5,168	-14.53
6	2,832	-13.98	11.62	1,932	-9.89	8.87	900	4,764	-12.36
7	2,824	-20.01	11.36	2,306	8.15	9.63	518	5,129	-9.40
1-7	18,906	-12.44	11.01	14,177	-10.28	8.89	4,729	33,083	-11.53

資料來源：財政部統計處，臺灣地區進出口貿易統計月報。

Source: Dept. of Statistics, Ministry of Finance, "Preliminary Statistics of Export & Import."

表八：臺灣對日本之進出口狀況

Table 8. Trade with Japan



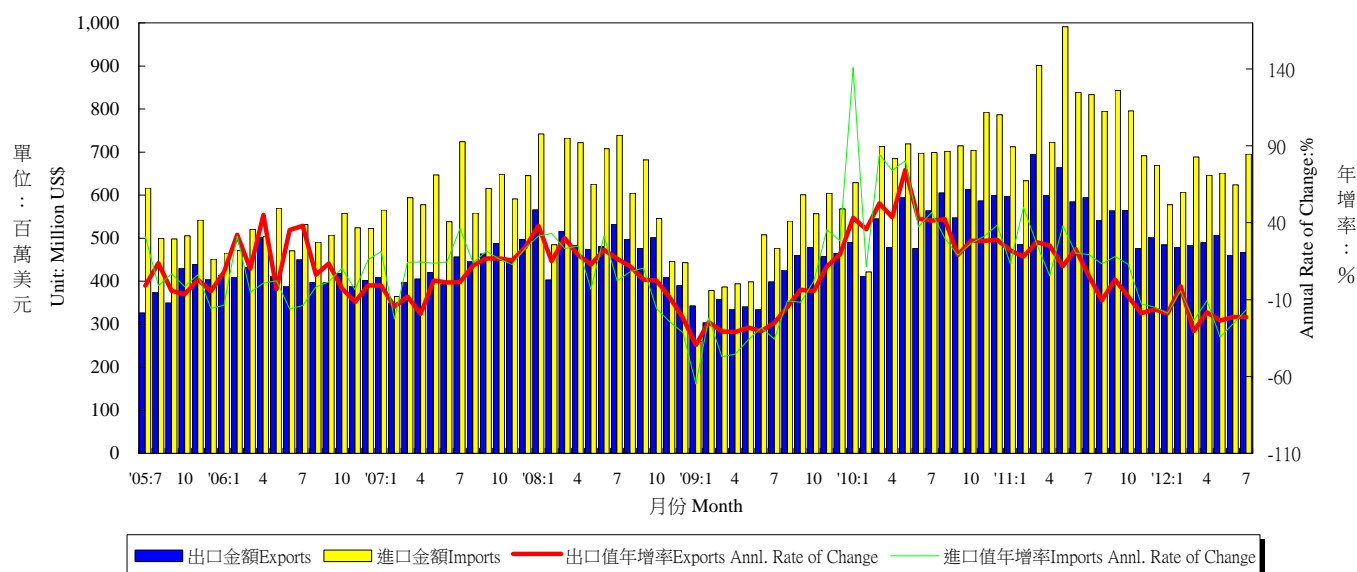
年與月 Year & Month	出口值 Exports			進口值 Imports			出入超 Trade Balance	貿易總額 Total Trade Amount	
	金額 (百萬美元) Amount (Mil. US\$)	年增率 Annual rate of change (%)	份額 Export share (%)	金額 (百萬美元) Amount (Mil. US\$)	年增率 Annual rate of change (%)	份額 Export share (%)	金額 (百萬美元) Amount (Mil. US\$)	金額 (百萬美元) Amount (Mil. US\$)	年增率 Annual rate of change (%)
2000	16,887	40.23	11.11	38,622	26.06	27.44	-21,735	55,509	30.06
2001	13,024	-22.87	10.31	25,933	-32.85	24.02	-12,909	38,958	-29.82
2002	12,368	-5.04	9.14	27,363	5.51	24.16	-14,995	39,731	1.99
2003	12,430	0.50	8.25	32,720	19.57	25.56	-20,290	45,149	13.64
2004	13,808	11.09	7.57	43,718	33.61	25.91	-29,910	57,526	27.41
2005	15,111	9.43	7.62	46,053	5.34	25.22	-30,943	61,164	6.32
2006	16,300	7.87	7.28	46,284	0.50	22.83	-29,984	62,585	2.32
2007	15,934	-2.25	6.46	45,937	-0.75	20.95	-30,003	61,870	-1.14
2008	17,556	10.18	6.87	46,508	1.24	19.34	-28,952	64,064	3.55
2009	14,502	-17.39	7.12	36,220	-22.12	20.77	-21,718	50,722	-20.83
2010	18,006	24.16	6.56	51,917	43.34	20.66	-33,911	69,923	37.86
2011	18,238	1.29	5.92	52,210	0.56	18.54	-33,972	70,449	0.75
2011 8	1,486	-9.33	5.77	4,440	-5.92	19.19	-2,953	5,926	-6.80
9	1,458	-8.45	5.92	4,109	-4.78	18.02	-2,651	5,567	-5.76
10	1,625	-0.01	6.01	4,468	-0.37	18.86	-2,843	6,092	-0.27
11	1,499	-4.21	6.07	3,943	-14.46	18.37	-2,444	5,442	-11.86
12	1,416	0.57	5.91	3,891	-11.53	17.99	-2,475	5,307	-8.59
2012 1	1,327	-16.45	6.30	3,372	-24.11	16.37	-2,045	4,699	-22.09
2	1,386	1.03	5.92	3,989	-9.29	19.39	-2,602	5,375	-6.84
3	1,403	-3.61	5.33	4,041	-15.69	16.84	-2,638	5,444	-12.88
4	1,458	-10.56	5.71	4,099	-3.49	16.49	-2,642	5,557	-5.45
5	1,633	3.84	6.26	4,169	-8.03	17.49	-2,535	5,802	-4.97
6	1,542	6.72	6.33	4,069	-10.47	18.68	-2,528	5,611	-6.33
7	1,609	-4.16	6.48	4,361	-0.70	18.21	-2,751	5,970	-1.66
1-7	10,358	-3.60	6.03	28,100	-10.37	17.61	-17,742	38,458	-8.64

資料來源：財政部統計處，臺灣地區進出口貿易統計月報。

Source : Dept. of Statistics, Ministry of Finance, "Preliminary Statistics of Export & Import."

表九：臺灣對德國之進出口狀況

Table 9. Trade with Germany



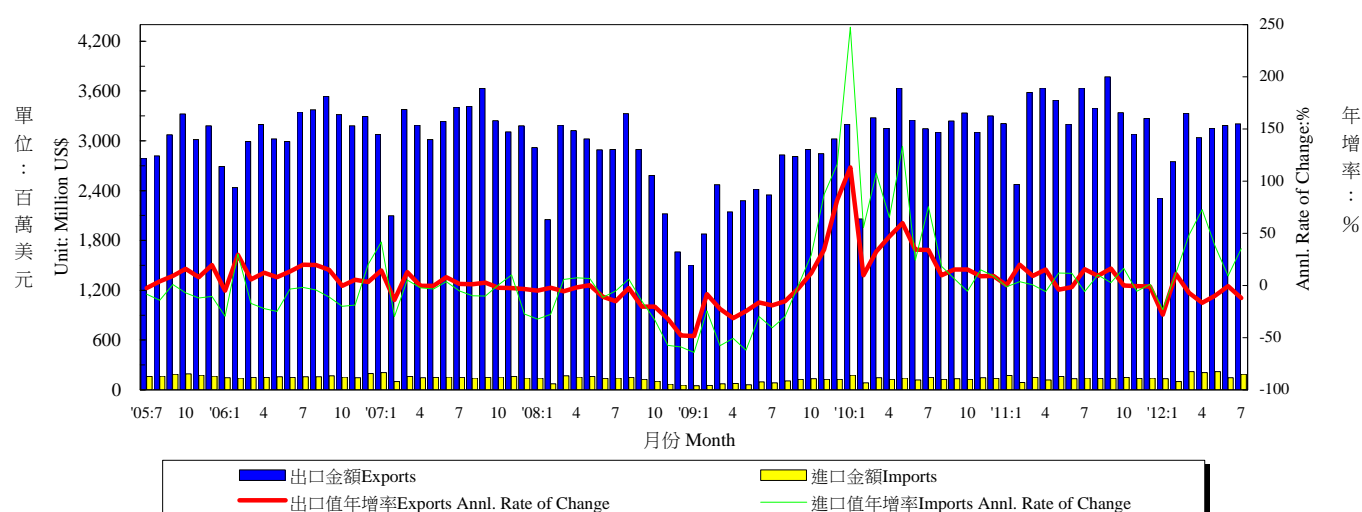
年與月 Year & Month	出口值 Exports			進口值 Imports			出入超 Trade Balance	貿易總額 Total Trade Amount	
	金額 (百萬美元) Amount (Mil. US\$)	年增率 Annual rate of change (%)	份額 Export share (%)	金額 (百萬美元) Amount (Mil. US\$)	年增率 Annual rate of change (%)	份額 Export share (%)	金額 (百萬美元) Amount (Mil. US\$)	金額 (百萬美元) Amount (Mil. US\$)	年增率 Annual rate of change (%)
2000	4,936	20.44	3.25	5,579	4.63	3.96	-643	10,515	11.50
2001	4,537	-8.10	3.59	4,274	-23.38	3.96	262	8,811	-16.21
2002	3,886	-14.33	2.87	4,448	4.07	3.93	-562	8,335	-5.40
2003	4,286	10.27	2.85	4,986	12.09	3.90	-701	9,272	11.24
2004	4,607	7.51	2.53	5,852	17.36	3.47	-1,245	10,459	12.81
2005	4,463	-3.13	2.25	6,180	5.61	3.38	-1,717	10,643	1.76
2006	5,007	12.19	2.24	6,135	-0.73	3.03	-1,128	11,142	4.69
2007	5,175	3.35	2.10	7,070	15.24	3.22	-1,895	12,245	9.90
2008	5,730	10.72	2.24	7,474	5.72	3.11	-1,745	13,204	7.83
2009	4,696	-18.04	2.31	5,673	-24.10	3.25	-977	10,369	-21.47
2010	6,512	38.67	2.37	8,264	45.68	3.29	-1,752	14,776	42.50
2011	6,876	5.60	2.23	9,428	14.09	3.35	-2,552	16,304	10.35
2011 8	542	-10.44	2.10	795	13.25	3.44	-253	1,337	2.28
9	563	2.99	2.29	843	17.93	3.70	-280	1,406	11.45
10	565	-7.90	2.09	796	12.95	3.36	-230	1,361	3.24
11	476	-18.83	1.93	691	-12.82	3.22	-215	1,167	-15.37
12	502	-16.25	2.10	669	-14.86	3.10	-167	1,172	-15.46
2012 1	485	-18.96	2.30	578	-18.84	2.81	-93	1,063	-18.89
2	479	-1.34	2.05	607	-4.15	2.95	-128	1,086	-2.93
3	483	-30.43	1.83	688	-23.64	2.87	-205	1,171	-26.59
4	490	-18.20	1.92	646	-10.66	2.60	-156	1,136	-14.08
5	507	-23.63	1.94	651	-34.32	2.73	-144	1,158	-30.03
6	459	-21.41	1.89	624	-25.61	2.86	-165	1,084	-23.89
7	468	-21.26	1.88	695	-16.56	2.90	-228	1,163	-18.51
1-7	3,371	-20.11	1.96	4,490	-20.32	2.81	-1,118	7,861	-20.22

資料來源：財政部統計處, 臺灣地區進出口貿易統計月報

Source : Dept. of Statistics, Ministry of Finance, "Preliminary Statistics of Export & Import."

表十：臺灣對香港之進出口狀況

Table 10. Trade with Hong Kong

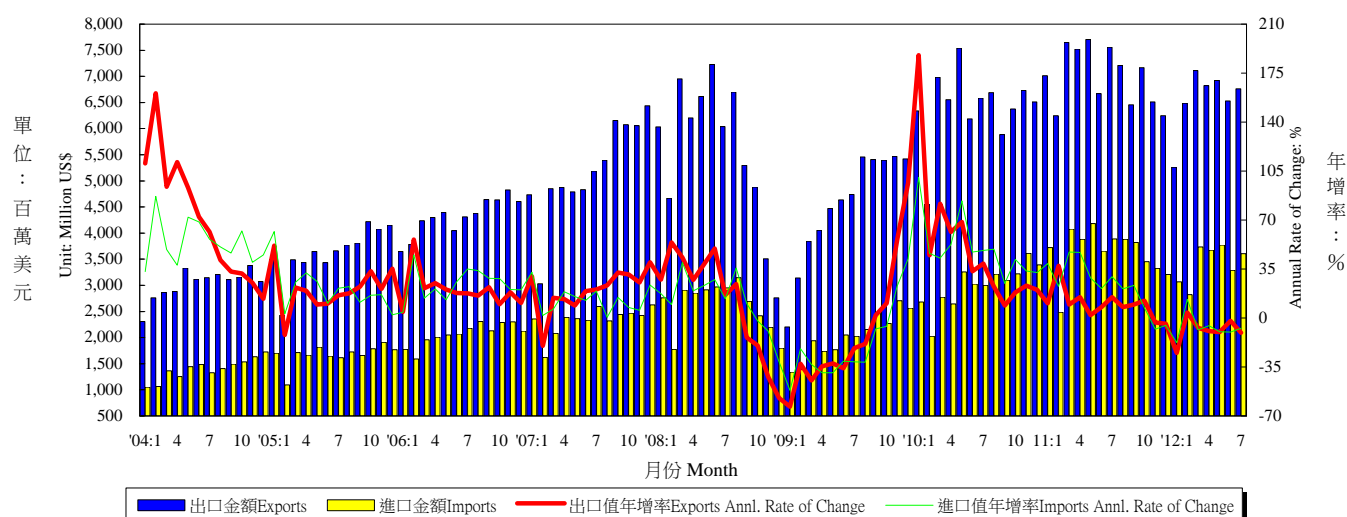


年與月 Year & Month	出口值 Exports			進口值 Imports			出入超 Trade Balance	貿易總額 Total Trade Amount	
	金額 (百萬美元) Amount (Mil. US\$)	年增率 Annual rate of change (%)	份額 Export share (%)	金額 (百萬美元) Amount (Mil. US\$)	年增率 Annual rate of change (%)	份額 Export share (%)	金額 (百萬美元) Amount (Mil. US\$)	金額 (百萬美元) Amount (Mil. US\$)	年增率 Annual rate of change (%)
2000	32,742	22.06	21.55	2,364	6.32	1.68	30,378	35,106	20.85
2001	28,713	-12.31	22.73	2,052	-13.22	1.90	26,661	30,764	-12.37
2002	32,960	14.79	24.36	1,915	-6.66	1.69	31,045	34,875	13.36
2003	30,868	-6.35	20.50	1,917	0.12	1.50	28,951	32,785	-5.99
2004	32,896	6.57	18.04	2,309	20.44	1.37	30,587	35,205	7.38
2005	34,036	3.46	17.15	2,110	-8.64	1.16	31,926	36,145	2.67
2006	37,381	9.83	16.69	1,881	-10.86	0.93	35,501	39,262	8.62
2007	37,980	1.60	15.40	1,825	-2.96	0.83	36,155	39,805	1.38
2008	32,690	-13.93	12.79	1,493	-18.20	0.62	31,197	34,183	-14.12
2009	29,446	-9.92	14.46	1,123	-24.80	0.64	28,324	30,569	-10.57
2010	37,807	28.39	13.77	1,628	44.99	0.65	36,179	39,435	29.00
2011	40,088	6.03	13.00	1,676	2.96	0.60	38,413	41,764	5.91
2011 8	3,392	9.28	13.16	138	9.98	0.60	3,254	3,531	9.31
9	3,770	16.36	15.32	139	2.65	0.61	3,630	3,909	15.81
10	3,338	0.09	12.35	149	16.71	0.63	3,189	3,487	0.70
11	3,080	-0.74	12.48	139	-5.39	0.65	2,941	3,219	-0.95
12	3,272	-0.84	13.66	141	1.16	0.65	3,131	3,413	-0.76
2012 1	2,311	-27.99	10.96	135	-22.94	0.65	2,176	2,445	-27.73
2	2,748	11.05	11.74	100	12.07	0.49	2,648	2,848	11.09
3	3,333	-7.02	12.65	222	48.40	0.92	3,111	3,554	-4.80
4	3,038	-16.45	11.89	207	72.68	0.83	2,830	3,245	-13.60
5	3,151	-9.70	12.07	221	37.96	0.93	2,930	3,372	-7.61
6	3,185	-0.54	13.07	146	9.09	0.67	3,039	3,331	-0.16
7	3,206	-11.87	12.90	191	35.37	0.80	3,015	3,397	-10.11
1-7	20,971	-9.74	12.22	1,221	26.28	0.77	19,750	22,192	-8.30

資料來源：財政部統計處，臺灣地區進出口貿易統計月報。

Source : Dept. of Statistics, Ministry of Finance, "Preliminary Statistics of Export & Import."

表十一：兩岸經貿
Table 11. Trade Across the Taiwan Straits



年與月 Year & Month	臺灣對大陸之進出口狀況 Trade With China						出入超金額百 萬美元 Net Export Amount (Mil. US\$)	匯率 人民幣兌 一美元 Exchange Rate (RMB/US\$)	大陸 消費者物價 總指數 年增率 China's Consumer Price Index
	出口值 Exports			進口值 Imports					
	金額 (百萬美元) Amount (Mil. US\$)	年增率 Annual rate of change (%)	份額 Export share (%)	金額 (百萬美元) Amount (Mil. US\$)	年增率 Annual rate of change (%)	份額 Export share (%)			
2000	4,391	68.77	2.89	6,229	37.55	4.43	-1,838	8.28	0.35
2001	4,895	11.47	3.88	5,903	-5.24	5.47	-1,008	8.28	0.73
2002	10,527	115.04	7.78	7,969	34.99	7.04	2,558	8.28	-1.48
2003	22,891	117.45	15.20	11,018	38.27	8.61	11,873	8.28	1.95
2004	36,349	58.79	19.93	16,792	52.41	9.95	19,557	8.28	2.70
2005	43,644	20.07	21.99	20,094	19.66	11.00	23,550	8.19	-2.01
2006	51,809	18.71	23.13	24,783	23.34	12.23	27,025	7.97	-0.34
2007	62,417	20.48	25.30	28,015	13.04	12.78	34,402	7.61	3.25
2008	66,884	7.16	26.16	31,391	12.05	13.06	35,492	6.95	1.08
2009	54,249	-18.89	26.63	24,423	-22.20	14.01	29,825	6.83	-6.22
2010	76,935	41.82	28.02	35,946	47.18	14.31	40,989	6.77	3.33
2011	83,965	9.14	27.23	43,607	21.31	15.49	40,358	6.46	5.41
2011 8	7,213	7.86	27.98	3,882	20.78	16.77	3,331	6.41	6.20
9	6,455	9.63	26.23	3,820	23.30	16.73	2,635	6.38	6.10
10	7,165	12.36	26.51	3,455	7.25	14.58	3,710	6.36	5.50
11	6,510	-3.28	26.38	3,327	-7.98	15.49	3,184	6.34	4.20
12	6,250	-4.02	26.09	3,211	-5.34	14.84	3,039	6.33	4.10
2012 1	5,261	-24.96	24.96	3,070	-17.57	14.90	2,191	6.32	4.50
2	6,486	3.78	27.71	2,820	13.34	13.71	3,666	6.30	3.20
3	7,114	-7.05	27.00	3,734	-8.42	15.57	3,380	6.31	3.60
4	6,822	-9.28	26.71	3,672	-5.47	14.78	3,150	6.30	3.40
5	6,922	-10.16	26.52	3,772	-9.84	15.83	3,150	6.31	3.00
6	6,530	-2.08	26.80	3,286	-10.18	15.08	3,244	6.32	2.20
7	6,761	-10.53	27.21	3,604	-7.31	15.05	3,157	6.37	1.80
1-當月	45,895	-8.88	26.74	23,958	-7.52	15.02	21,937	6.32	3.10

資料來源：財政部統計處，臺灣地區進出口貿易統計月報。

Source : Dept. of Statistics, Ministry of Finance, "Preliminary Statistics of Export & Import."