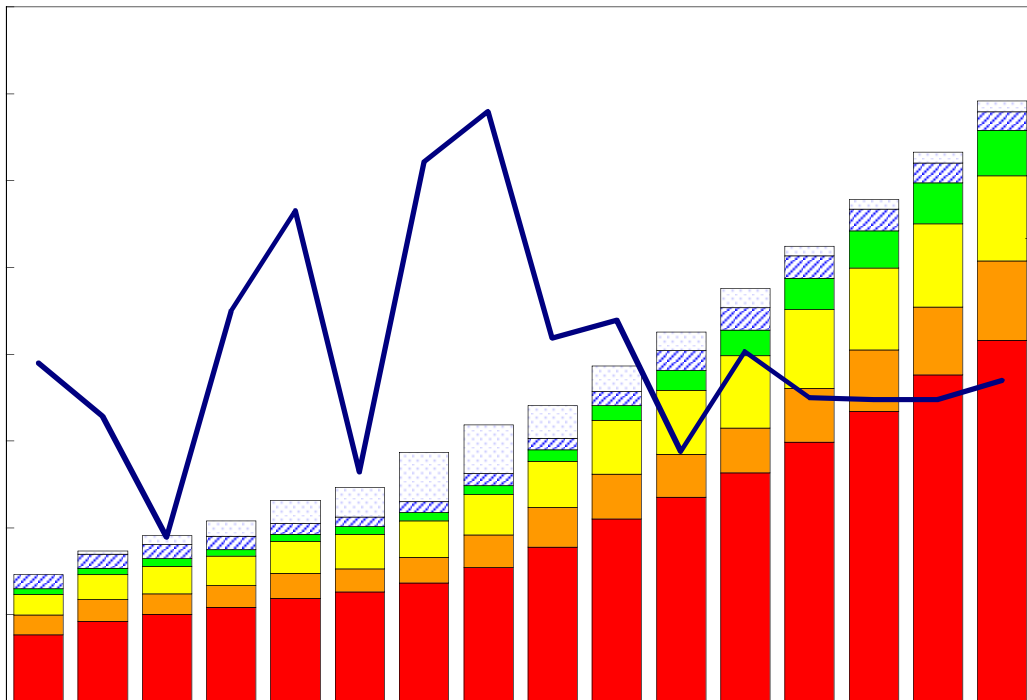


臺灣重要經濟變動指標

Major Economic Indicators for Taiwan



中華經濟研究院

經濟展望中心 編製

中華民國102年9月

Chung-Hua Institution for Economic Research

September 2013

目次

Index

臺灣經濟預測.....I	Taiwan's Macroeconomic Forecasts.....I
表一：主要總體經濟指標.....2-3	Table 1 : GDP Components by Expenditure.....2-3
表二：各業產值概況.....4-5	Table 2 : GDP Components by Industry.....4-5
表三：生產概況.....6	Table 3 : Industry Indicators.....6
表四：景氣概況.....7	Table 4 : Cyclical Indicators.....7
表五：物價與金融概況.....8-9	Table 5 : Prices and Financial Situation.....8-9
表六：臺灣進出口貿易.....10	Table 6 : Foreign Trade Values.....10
表七：臺灣對美國之進出口狀況.....11	Table 7 : Trade with the United States11
表八：臺灣對日本之進出口狀況.....12	Table 8 : Trade with Japan.....12
表九：臺灣對德國之進出口狀況.....13	Table 9 : Trade with Germany.....13
表十：臺灣對香港之進出口狀況.....14	Table 10 : Trade with Hong Kong14
表十一：兩岸經貿.....15	Table 11 : Trade across the Taiwan Straits.....15

臺灣經濟預測

Taiwan's Macroeconomic Forecasts

	2013年季預測				2012年	2013年	2014年
	Year 2013 Quarterly						
	第1季	第2季	第3季	第4季	2012	2013	2014
	Q1	Q2	Q3	Q4			
GDP, GNP及其組成, 新臺幣十億元(2006年基期), GDP, GNP and Major Components, Billions of 2006 NT Dollars							
實質GDP, Real GDP	3,637.68	3,724.45	3,916.23	4,052.08	14,988.59	15,330.44	15,837.77
年變動率, yoy(%)	1.67	2.29	2.67	2.45	1.32	2.28	3.31
實質GNP, Real GNP	3,764.19	3,821.59	3,992.69	4,146.24	15,402.48	15,724.70	16,282.95
年變動率, yoy(%)	1.42	2.05	2.58	2.27	1.63	2.09	3.55
每人平均GNP, per capita GNP^[1]	5,350.92	5,136.25	5,418.28	5,595.73	21,146.51	21,501.18	22,483.12
年變動率, yoy(%)	2.68	1.39	2.69	0.04	2.25	1.68	4.57
民間消費, Private Consumption	2,026.23	1,983.98	2,084.40	2,056.79	8,035.08	8,151.40	8,299.42
年變動率, yoy(%)	0.35	1.28	2.25	1.90	1.47	1.45	1.82
固定資本形成, Total Fixed Investment	586.99	608.61	648.71	639.46	2,401.73	2,483.76	2,561.54
年變動率, yoy(%)	7.44	2.16	2.66	1.87	-4.19	3.42	3.13
民間投資, Private Fixed Investment	502.29	485.94	528.31	467.53	1,890.05	1,984.08	2,070.01
年變動率, yoy(%)	8.67	3.54	4.36	3.37	-2.11	4.97	4.33
財貨與服務之輸出, Exports, gds+serv	2,692.99	2,823.97	2,922.51	3,011.32	11,036.11	11,450.79	12,018.56
年變動率, yoy(%)	4.79	3.89	3.36	3.11	0.11	3.76	4.96
財貨與服務之輸入, Imports, gds+serv	2,056.74	2,098.93	2,150.48	2,109.89	8,124.67	8,416.04	8,671.08
年變動率, yoy(%)	6.59	2.48	2.36	3.11	-2.08	3.59	3.03
海關出口 (fob, 億美元), Merchandise Export(fob, US \$100m)^[2]	726.17	778.68	792.42	805.37	3,011.81	3,102.64	3,283.06
年變動率, yoy(%)	2.42	2.44	3.18	3.96	-2.30	3.02	5.82
海關進口 (cif, 億美元), Merchandise Import (cif, US \$100m)^[2]	679.89	678.88	711.09	694.26	2,704.73	2,764.11	2,887.99
年變動率, yoy(%)	4.41	-3.51	4.12	4.08	-3.90	2.20	4.48
GDP平減指數, GDP Deflator	97.04	93.52	94.6	93.81	93.71	94.74	95.24
年變動率, yoy(%)	1.01	1.26	1.27	0.85	1.34	1.1	0.53
躉售物價指數, Wholesale Price Index^[2]	97.25	96.37	99.47	98.53	98.84	97.91	100.52
年變動率, yoy(%)	-3.06	-2.99	0.64	1.75	-1.16	-0.94	2.67
消費者物價指數, Consumer Price Index^[2]	102.24	102.35	104.43	104.11	101.93	103.28	104.86
年變動率, yoy(%)	1.81	0.80	1.31	1.39	1.93	1.32	1.53
M2貨幣存量(日平均), Money Stock (M2)	34,024.39	34,274.07	34,782.70	35,114.57	33,037.65	34,548.93	36,153.57
年變動率, yoy(%)	3.43	4.09	5.17	5.59	4.17	4.57	4.64
臺幣兌美元匯率, Exchange Rate(NT\$/US\$)^[2]	29.55	29.95	29.96	29.88	29.62	29.83	29.60
年變動率, yoy(%) ^[3]	0.59	-0.98	-0.30	-2.29	-0.50	-0.74	0.79
商業本票利率, 31-90 day Commercial Paper Rate	0.73	0.72	0.74	0.75	0.79	0.73	0.76
失業率(%), Unemployment Rate(%)	4.19	4.13	4.26	4.17	4.24	4.19	4.14

說明:有關匯率變動百分比,正值表示升值,負數表示貶值比率。

資料來源:中華經濟研究院,經濟展望中心,2013年7月24日。

Source: CEF, CIER, July 24, 2013.

說明:[1]:有關每人平均GNP在此以美元表示。

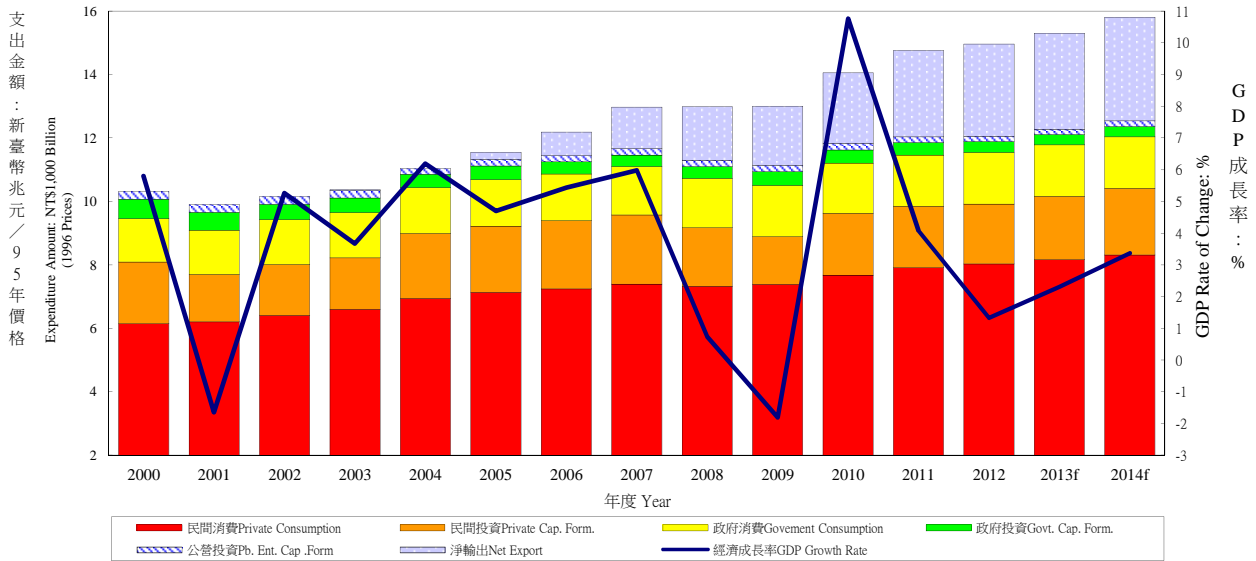
[2]:表示2013年第2季資料為官方統計之粗估值,非預測值。

[3]:有關匯率年增率(%),正值表示升值,負數表示貶值比率。

表一：主要總體經濟指標

Table 1. GDP Components by Expenditure

實質GDP各需求支出及成長率 Real GDP Expenditure & Growth Rate



年與季 Year & Quarter	GDP 經濟成長率 Economic Growth Rate (%)	名目GDP (新臺幣十億元) GDP (Bil. NT\$)	民間消費 Private Consumption Expenditure		民間固定投資 Private Spe. Gross Fixed Cap. Formation		商品及勞務輸出 Exports of Goods and Services		商品及勞務輸入 Imports of Goods and Services		政府消費 Government Consumption Expenditure	
			占GDP /GDP (%)	年增率 Annual Rate of Change (%)	占GDP /GDP (%)	年增率 Annual Rate of Change (%)	占GDP /GDP (%)	年增率 Annual Rate of Change (%)	占GDP /GDP (%)	年增率 Annual Rate of Change (%)	占GDP /GDP (%)	年增率 Annual Rate of Change (%)
2000	5.80	10,187	58.78	4.75	17.66	13.19	52.93	18.31	50.76	15.34	13.38	1.21
2001	-1.65	9,930	60.70	0.98	13.64	-22.98	49.97	-8.60	44.52	-14.75	14.01	1.86
2002	5.26	10,412	59.91	3.26	13.81	7.12	52.22	11.37	45.03	6.21	13.57	1.55
2003	3.67	10,696	59.82	2.91	14.06	1.93	55.49	10.23	48.47	7.68	13.24	-1.23
2004	6.19	11,365	59.91	5.17	17.71	25.62	61.42	15.40	57.74	17.50	12.71	0.57
2005	4.70	11,740	60.40	2.90	17.21	1.53	62.53	7.78	58.12	3.16	12.46	0.19
2006	5.44	12,243	59.20	1.49	17.57	3.31	68.00	11.41	61.88	4.57	12.00	-0.71
2007	5.98	12,911	58.14	2.08	17.37	1.36	72.07	9.55	64.11	2.98	11.78	2.09
2008	0.73	12,620	60.30	-0.93	15.93	-15.58	72.97	0.87	68.05	-3.71	12.39	0.83
2009	-1.81	12,481	60.68	0.76	13.13	-18.15	62.49	-8.68	53.84	-13.10	12.98	4.01
2010	10.76	13,552	58.47	3.96	15.94	29.76	73.80	25.63	66.79	27.70	12.12	0.44
2011	4.07	13,674	60.22	3.13	15.83	-1.26	76.06	4.45	69.44	-0.47	12.42	2.25
2012	1.32	14,042	60.28	1.47	15.23	-2.11	73.61	0.11	66.04	-2.08	12.39	0.46
2013f	2.31	14,385	60.22	1.59	15.44	5.91	74.06	4.61	65.97	4.82	12.03	0.12
2014f	3.37	14,771	60.38	1.91	15.76	4.82	75.18	4.77	67.31	3.63	11.79	0.15
2012 1	0.59	3,437	61.35	1.92	15.28	-9.10	71.29	-3.37	64.78	-7.23	13.84	2.10
2012 2	-0.12	3,363	61.32	1.61	15.77	-5.71	77.40	-2.54	71.50	-4.09	11.55	2.50
2012 3	0.73	3,563	60.63	0.90	16.28	1.54	74.17	2.28	67.20	1.88	11.67	-0.70
2012 4	3.97	3,679	58.01	1.48	13.66	6.18	71.74	3.90	61.10	1.29	12.49	-1.47
2013 1p	1.62	3,517	60.98	0.30	15.65	7.35	71.32	5.03	65.11	6.66	13.58	1.26
2013 2f	2.49	3,470	60.65	1.69	15.70	6.47	77.06	5.16	68.03	3.15	11.15	-0.18
2013 3f	2.47	3,631	60.98	2.44	16.40	4.52	73.90	3.66	66.61	3.67	11.30	-0.22
2013 4f	2.61	3,766	58.40	1.90	14.08	5.42	74.01	4.65	64.27	5.94	12.11	-0.21
2014 1f	3.17	3,606	61.48	2.27	15.82	3.93	72.71	4.65	66.18	3.04	13.29	0.21
2014 2f	3.38	3,579	60.51	1.79	15.83	3.73	77.75	4.55	69.22	4.13	10.90	0.17
2014 3f	3.34	3,731	60.98	1.62	16.93	6.03	74.61	4.42	67.74	3.38	11.08	0.08
2014 4f	3.55	3,856	58.66	1.97	14.52	5.53	75.64	5.42	66.19	3.93	11.92	0.14

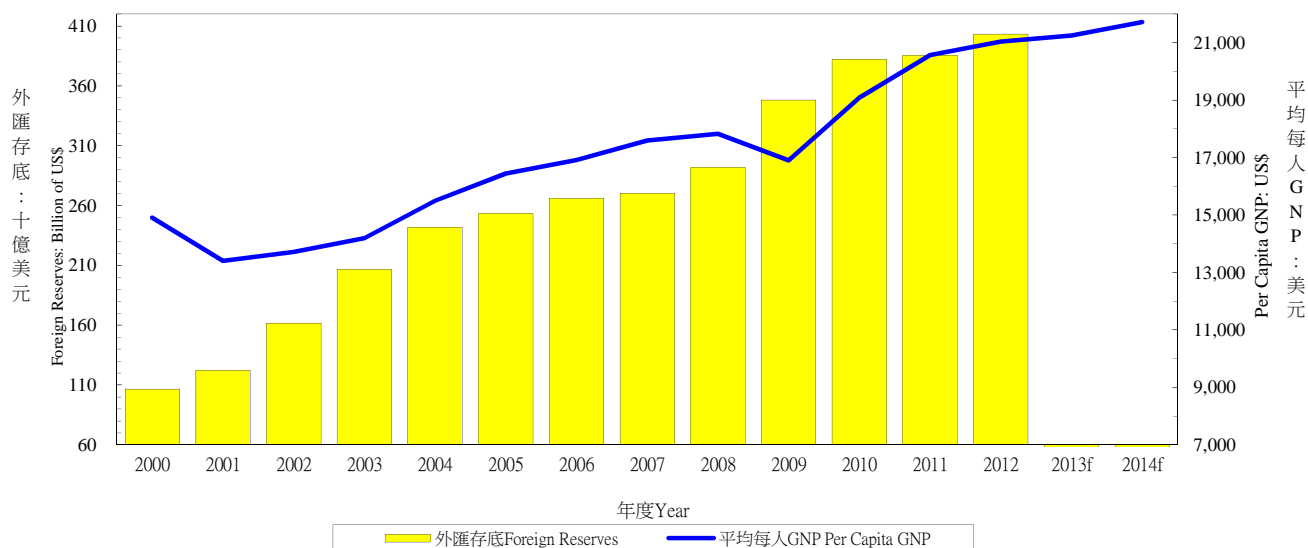
資料來源：行政院主計總處，中華民國臺灣地區國民經濟動向統計季報，中央銀行經濟研究處，臺灣地區金融統計月報。

註：以上所列為政府發佈資料，本院對GDP的預測列於本刊第一部份臺灣總體經濟預測。

Source：DGBAS, Executive Yuan, "Quarterly National Economic Trends, Taiwan Area, ROC"

The Central Bank of China, Financial Statistics, Taiwan District, The Republic of China

外匯存底及平均每人GNP Total Foreign Reserves & Per Capita GNP

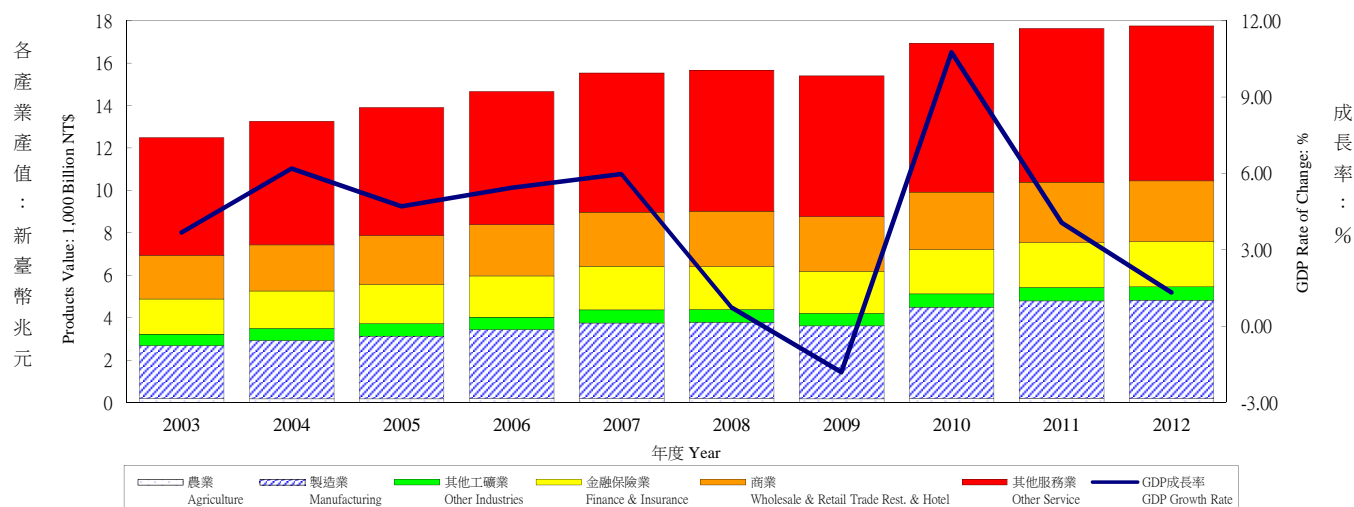


年與季 Year & Quarter	公營事業固定投資 Public Enter. Gross Fixed Capita Formation		政府固定投資 Government Gross Fixed Capita Formation		存貨增加 Increase in Stocks		國外要素淨收入 Net Factor Income From Abroad		平均每人 GNP (美元) Per Capita GNP (US\$)	外匯存底 (十億美元) Total Foreign Reserves (Billion of US\$)
	占 GDP /GDP (%)	年增率 Annual Rate of Change (%)	占 GDP /GDP (%)	年增率 Annual Rate of Change (%)	占 GDP /GDP (%)	新台幣 百萬 (2006年價格) NT Mil (2006=100)	占 GDP /GDP (%)	年增率 Annual Rate of Change (%)		
2000	2.32	-3.33	4.80	-4.17	1.10	107,491	1.37	52.36	14,906	106.7
2001	2.40	-0.06	4.44	-9.22	-0.84	-80,627	1.93	37.75	13,401	122.2
2002	2.21	-2.58	3.74	-13.18	-0.59	-59,812	2.33	26.51	13,716	161.7
2003	2.09	-4.70	3.65	-4.47	0.12	12,679	3.07	35.96	14,197	206.6
2004	1.63	-20.60	3.47	-9.59	0.88	104,189	3.27	11.46	15,503	241.7
2005	1.78	14.77	3.46	2.82	0.28	34,223	2.48	-23.31	16,449	253.3
2006	1.59	-8.61	3.14	-11.21	0.38	46,283	2.55	6.28	16,911	266.1
2007	1.57	1.57	3.07	-4.46	0.11	12,867	2.58	5.12	17,596	270.3
2008	1.66	-1.98	3.53	1.18	1.27	134,441	2.49	-8.47	17,833	291.7
2009	1.78	2.14	3.94	15.94	-1.16	-133,949	3.32	31.97	16,901	348.2
2010	1.78	8.11	3.60	-3.10	1.08	152,057	3.17	2.84	19,090	382.0
2011	1.54	-14.39	3.43	-5.93	-0.05	25,612	2.84	-10.82	20,574	385.5
2012	1.38	-8.27	2.95	-12.51	0.20	17,417	3.30	14.02	21,042	403.2
2013f	1.34	4.52	2.67	-6.55	0.20	20,519	3.02	-4.74	21,254	--
2014f	1.33	1.38	2.61	1.12	0.26	34,309	3.11	4.16	21,714	--
2012 1	0.84	-13.19	2.08	-16.89	0.10	7,064	4.18	-10.99	5,187	393.9
2012 2	1.39	-13.07	3.11	-14.92	0.96	23,944	3.36	16.76	5,040	391.2
2012 3	1.23	-11.51	2.99	-9.12	0.22	3,793	2.41	28.69	5,249	398.0
2012 4	2.03	-0.72	3.56	-10.65	-0.41	-17,384	2.96	55.18	5,566	403.2
2013 1p	0.91	18.46	1.89	-6.76	0.77	19,138	3.97	-4.45	5,306	390.3
2013 2f	1.27	0.82	2.67	-9.31	-0.48	-16,327	3.06	-6.88	5,117	406.6
2013 3f	1.09	-3.97	2.71	-6.97	0.23	7,741	2.32	-2.01	5,304	409.4
2013 4f	2.06	6.43	3.35	-3.95	0.27	9,967	2.78	-5.38	5,527	--
2014 1f	0.77	-13.57	1.87	3.76	0.23	7,166	4.24	7.66	5,363	--
2014 2f	1.36	11.01	2.64	2.14	0.22	6,171	3.07	1.85	5,261	--
2014 3f	1.16	9.51	2.63	-0.01	0.35	12,867	2.35	2.49	5,442	--
2014 4f	1.97	-2.18	3.25	-0.14	0.22	8,105	2.84	3.50	5,648	--

表二：各業產值概況

Table 2. GDP Components by Industry

GDP各產業產值及成長率 GDP Products Value & Growth Rate



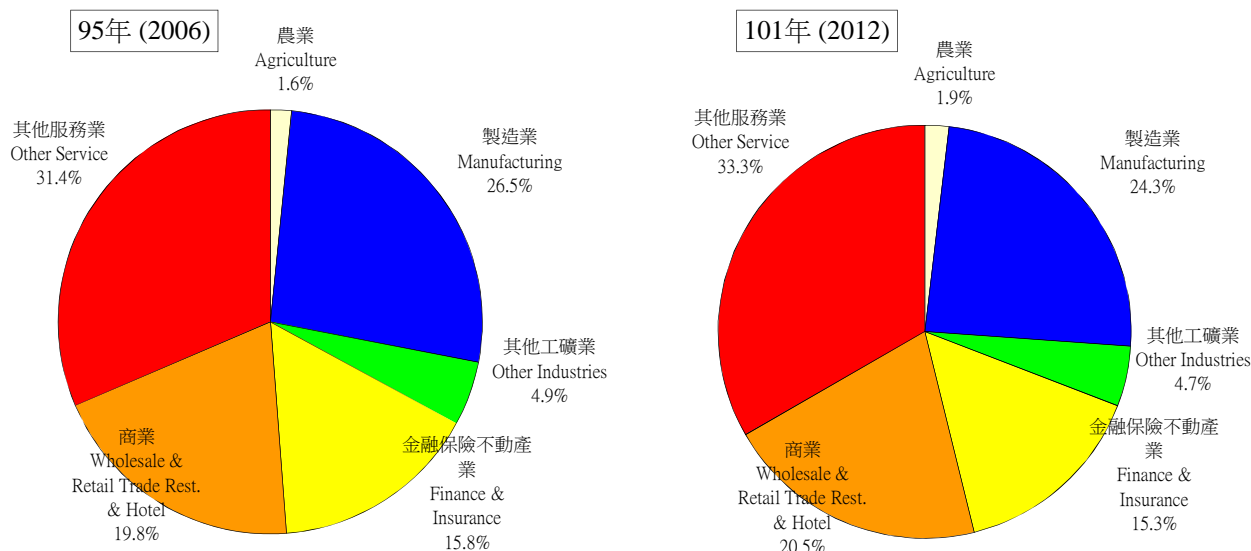
年與季 Year & Quarter	國內 生產毛額 GDP (新臺幣 十億元) 按95年價格 計算GDP (Bil. NTS)	GDP 成長率 GDP Rate of Change (%)	產業 Sector											
			農業 Agriculture Hunting Forestry & Fishing		工業 Industries						營造業 Construction		水電燃氣業 Electricity, Gas & Water	
			占GDP /GDP (%)	年增率 Annual Rate of Change (%)	合計 Sub Total		礦業 Mining & Quarring		製造業 Manufacturing		營造業 Construction		水電燃氣業 Electricity, Gas & Water	
				占GDP /GDP (%)	年增率 Annual Rate of Change (%)	占GDP /GDP (%)	年增率 Annual Rate of Change (%)	占GDP /GDP (%)	年增率 Annual Rate of Change (%)	占GDP /GDP (%)	年增率 Annual Rate of Change (%)	占GDP /GDP (%)	年增率 Annual Rate of Change (%)	
2003	10,444	3.67	1.71	-1.65	31.20	7.67	0.41	-19.28	26.13	10.09	2.36	-3.91	2.31	7.27
2004	11,090	6.19	1.68	-5.39	31.75	9.54	0.42	-1.37	26.81	10.33	2.53	7.13	1.99	6.16
2005	11,612	4.70	1.67	-4.24	31.26	6.93	0.38	-5.42	26.53	7.90	2.42	1.26	1.93	5.88
2006	12,243	5.44	1.61	13.84	31.33	7.84	0.32	-22.32	26.46	9.04	2.72	2.91	1.84	5.71
2007	12,976	5.98	1.49	-2.42	31.38	9.02	0.46	20.39	26.52	9.82	2.78	1.53	1.62	6.57
2008	13,071	0.73	1.60	0.10	29.05	0.24	0.16	-11.23	24.83	0.99	2.88	-5.55	1.18	-0.61
2009	12,834	-1.81	1.73	-3.00	28.92	-4.15	0.42	4.44	23.77	-4.30	2.69	-6.84	2.04	0.13
2010	14,215	10.76	1.64	1.75	31.00	23.11	0.48	13.59	25.90	25.46	2.81	11.81	1.80	5.00
2011	14,793	4.07	1.81	7.19	29.76	5.65	0.22	2.37	25.11	6.42	2.85	-0.07	1.58	0.64
2012	14,989	1.32	1.90	-4.43	28.95	0.93	0.33	10.13	24.24	0.97	2.85	-0.97	1.53	0.81
2011 1	3,557	7.37	1.65	10.47	30.28	14.75	0.31	14.07	25.47	16.63	3.00	3.25	1.50	1.23
2011 2	3,645	4.56	1.99	7.21	30.37	8.84	0.20	-0.36	25.70	9.84	2.92	2.18	1.56	1.72
2011 3	3,787	3.53	1.65	5.64	30.37	3.33	0.07	4.53	25.72	3.99	2.75	-2.08	1.84	-0.82
2011 4	3,804	1.21	1.96	5.86	28.04	-2.27	0.32	-7.66	23.56	-2.29	2.74	-3.95	1.41	0.77
2012 1	3,578	0.59	1.72	-6.02	27.42	-1.82	0.18	0.19	22.86	-2.11	3.06	-2.11	1.33	3.82
2012 2	3,641	-0.12	2.14	-3.81	28.84	-1.69	0.13	9.27	24.74	-1.92	2.92	-1.92	1.05	0.41
2012 3	3,814	0.73	1.83	-6.98	30.88	2.03	0.35	18.51	25.78	2.15	2.75	2.15	2.01	-1.05
2012 4	3,955	3.97	1.92	-1.58	28.60	5.03	0.63	9.42	23.58	5.56	2.69	5.56	1.70	0.53
2013 1r	3,636	1.62	1.72	1.05	28.06	2.51	0.48	13.72	22.98	2.62	3.15	2.62	1.45	-1.77
2013 2p	3,732	2.49	2.00	2.26	29.69	1.13	0.45	2.03	24.81	1.26	2.88	1.26	1.54	0.76

資料來源：行政院主計總處，中華民國臺灣地區國民經濟動向統計季報

註：國內生產毛額除整體產業、政府服務生產者、對家庭服務之民間非營利機構生產者，以及家事服務生產者之生產毛額外，尚有進口稅、加值型營業稅，以及設算銀行服務費等三個其他項未列入本表。

Source：DGBAS, Executive Yuan, "Quarterly National Economic Trends, Taiwan Area, ROC".

Note：Import duties, Value added taxes and imputed bank services charge, are not shown in the table.



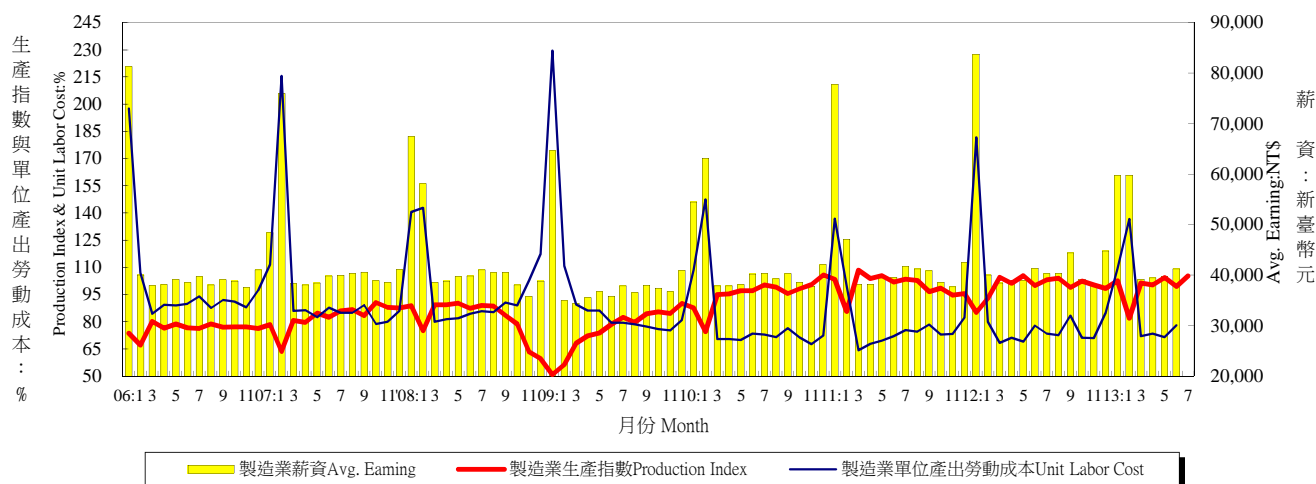
註：本圖型因未加上進口稅、加值型營業稅及減掉設算銀行服務費，所佔百分比與下表佔GDP百分比有些微差異。

Note: Import duties, Value added taxes and imputed bank services charge are not included; therefore the percentage is different from the table.

年與季 Year & Quarter	產業 Sector															
	服務業 Services															
	合計 Sub-Total		運輸倉儲及通訊業 Transportation Storage & Communication		商業 Wholesale & Retail Trade Rest. & Hotel		金融保險不動產 Finance Insurance Real Estate		公共行政及國防 Public Administration & National Defense		教育服務業 Educational Services		醫療保健及社會工作服務業 Medical Treatment & Social Work		其他產業 Other Services	
估GDP /GDP (%)	年增率 Annual Rate of Change (%)	估GDP /GDP (%)	年增率 Annual Rate of Change (%)	估GDP /GDP (%)	年增率 Annual Rate of Change (%)	估GDP /GDP (%)	年增率 Annual Rate of Change (%)	估GDP /GDP (%)	年增率 Annual Rate of Change (%)	估GDP /GDP (%)	年增率 Annual Rate of Change (%)	估GDP /GDP (%)	年增率 Annual Rate of Change (%)	估GDP /GDP (%)	年增率 Annual Rate of Change (%)	
2003	67.08	2.57	7.57	2.56	18.56	1.69	15.86	2.80	7.90	2.45	4.95	4.77	2.79	0.78	9.47	3.61
2004	66.57	5.17	7.35	5.69	18.98	6.17	15.71	5.84	7.68	0.84	4.68	3.53	2.72	2.18	9.45	7.34
2005	67.08	3.87	7.01	2.33	19.58	6.15	15.82	4.34	7.59	1.54	4.65	1.59	2.77	-1.67	9.65	4.48
2006	67.06	4.22	6.61	3.12	19.79	5.00	15.82	5.58	7.43	-0.06	4.68	3.86	2.84	-0.08	9.89	6.11
2007	67.12	4.43	6.65	4.09	20.13	5.76	15.79	5.70	7.11	-1.16	4.67	2.65	2.84	4.92	9.94	4.84
2008	69.35	1.06	6.74	2.78	20.94	1.85	16.04	-0.64	7.49	0.79	4.78	0.72	2.99	2.98	10.36	0.84
2009	69.35	-0.53	6.73	0.56	20.75	-1.04	15.60	-2.49	7.66	0.84	4.98	2.44	3.20	4.79	10.43	-1.03
2010	67.36	5.50	6.80	8.50	20.33	5.50	14.90	4.59	7.25	3.14	4.59	0.84	3.00	0.32	10.50	10.42
2011	68.43	3.00	6.61	3.39	21.27	4.52	15.27	2.26	7.26	0.28	4.62	1.27	3.11	3.99	10.97	3.20
2012	69.15	0.83	6.56	2.59	20.80	0.28	15.05	0.46	7.45	1.05	4.71	1.23	3.20	1.71	10.87	0.77
2010 1	68.71	6.96	6.60	12.06	20.16	6.08	14.86	7.43	8.52	2.17	5.60	1.58	2.91	-1.18	10.27	13.42
2010 2	66.25	6.65	6.73	10.67	20.17	7.92	15.42	4.30	6.87	3.07	4.01	1.25	3.12	2.94	10.47	11.52
2010 3	66.15	5.00	6.97	6.80	19.59	4.98	14.56	4.39	7.20	3.24	4.50	0.24	2.94	1.92	10.40	9.47
2010 4	68.34	3.63	7.07	5.08	21.97	3.37	15.20	2.56	6.47	4.05	4.29	0.37	3.13	-2.33	11.14	7.80
2011 1	68.07	5.36	6.50	3.75	20.95	8.24	15.04	4.33	8.17	0.84	5.39	1.37	2.86	9.34	10.64	5.96
2011 2	67.63	2.96	6.40	1.81	21.39	4.57	16.05	3.25	6.82	-0.10	4.03	1.38	3.29	2.95	10.97	2.97
2011 3	67.99	2.74	6.65	4.57	20.45	4.20	14.97	2.50	7.28	-0.31	4.59	1.45	3.05	1.57	10.84	2.28
2011 4	70.01	1.11	6.89	3.40	22.30	1.38	15.04	-0.87	6.75	0.77	4.43	0.88	3.25	2.60	11.43	1.82
2012 1	70.86	0.47	6.49	4.07	20.88	-0.13	14.88	-0.65	8.80	2.20	5.75	1.50	3.02	0.22	10.64	-0.60
2012 2	69.02	1.27	6.46	3.29	21.13	0.52	15.96	0.31	7.14	1.35	4.13	1.13	3.39	1.07	11.23	2.97
2012 3	67.29	0.42	6.67	1.82	19.90	-0.26	14.72	-0.16	7.20	-0.19	4.57	1.14	3.13	2.31	10.78	1.12
2012 4	69.49	1.15	6.61	1.30	21.31	0.95	14.69	2.33	6.72	0.99	4.40	1.13	3.25	3.19	10.85	-0.32
2013 1r	70.22	1.26	-	-	-	-	-	-	8.57	0.23	5.62	0.29	-	-	-	-
2013 2p	68.31	1.34	-	-	-	-	-	-	6.91	-0.42	4.10	1.16	-	-	-	-

表三：生產概況

Table 3. Industry Indicators

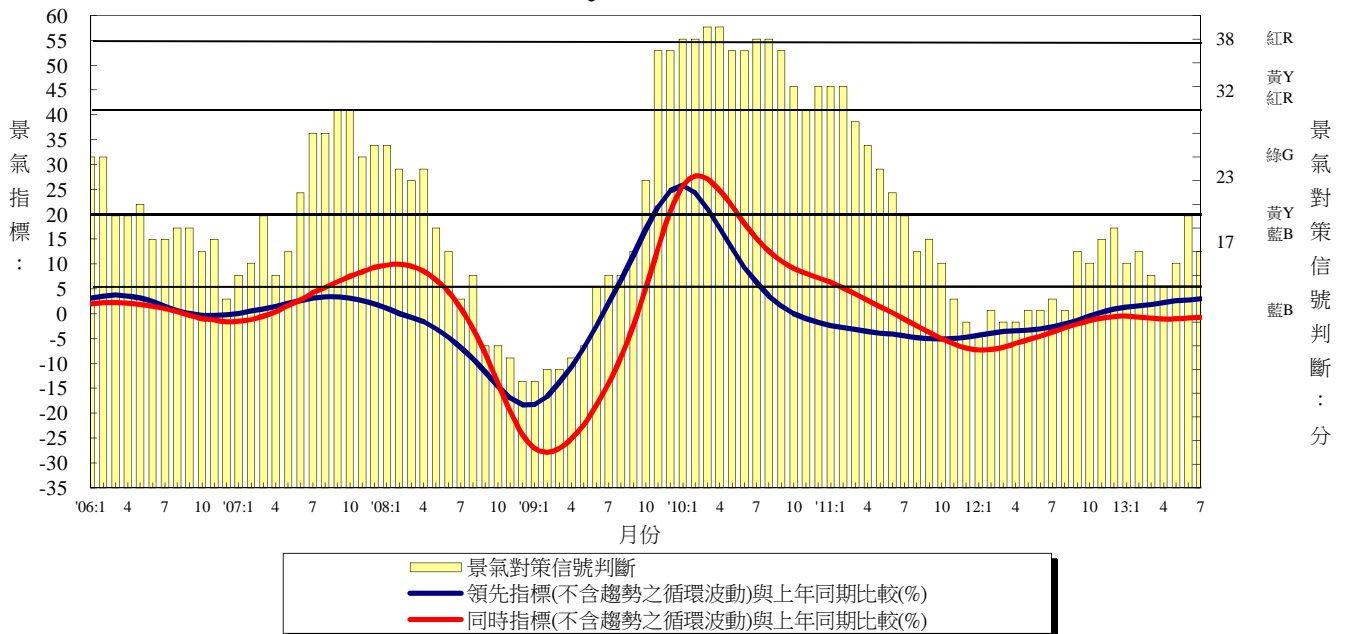


年與月 Year & Month	製造業生產 (基期100年=100) Mfg. Industrial Production (2011=100)		製造業重工業生產 (基期100年=100) Heavy Industry Production (2011=100)		製造業輕工業生產 (基期100年=100) Light Industry Production (2011=100)		製造業單位產出勞動成本 (基期95年=100) Unit labor cost in Manufacturing (2006=100)		製造業薪資 Average Earnings of Employees in Manufacturing	
	指數 Index (%)	年增率 Annual Rate of Change (%)	指數 Index (%)	年增率 Annual Rate of Change (%)	指數 Index (%)	年增率 Annual Rate of Change (%)	指數 Index (%)	年增率 Annual Rate of Change (%)	每人每月 (元) Wages per Month (NT\$)	年增率 Annual Rate of Change (%)
2000	59.20	7.85	-	-	-	-	116.32	-2.35	38,914.00	3.12
2001	53.86	-9.02	-	-	-	-	120.42	3.52	38,412	-1.29
2002	58.67	8.93	-	-	-	-	109.16	-9.35	38,435	0.06
2003	64.27	9.54	-	-	-	-	104.88	-3.92	39,549	2.90
2004	70.68	9.97	-	-	-	-	101.69	-3.04	40,657	2.80
2005	72.94	3.20	-	-	-	-	101.83	0.14	41,858	2.95
2006	76.30	4.61	-	-	-	-	100.00	-1.80	42,393	1.28
2007	82.66	8.34	79.17	10.39	101.84	-0.49	95.06	-4.94	43,169	1.83
2008	81.92	-0.90	79.14	-0.04	96.83	-4.92	97.31	2.37	43,105	-0.22
2009	75.53	-7.80	72.92	-7.86	89.57	-7.50	90.55	-6.95	39,152	-9.17
2010	95.52	26.47	94.76	29.95	99.60	11.20	79.42	-12.29	42,420	8.35
2011	100.00	4.69	100.00	5.53	100.00	0.40	80.30	1.11	43,533	2.62
2012	99.68	-0.32	99.70	-0.30	99.57	-0.43	82.28	2.47	43,994	1.06
2012 6	99.98	-1.95	100.80	-1.63	95.58	-3.71	77.95	8.23	41,383	4.70
7	103.12	-0.32	103.33	-0.64	101.98	1.50	73.47	-2.52	40,302	-3.39
8	104.01	1.19	104.14	1.34	103.31	0.38	72.54	-2.55	40,340	-2.20
9	98.96	2.47	99.25	3.11	97.37	-0.88	83.37	6.30	44,374	8.58
10	102.36	3.84	102.46	4.19	101.84	2.09	71.11	-2.50	39,203	1.70
11	100.23	5.97	100.10	7.07	100.89	0.46	70.98	-3.03	38,212	1.44
12	98.37	2.98	97.79	4.15	101.53	-2.65	84.98	3.34	44,745	5.27
2013 1	102.63	20.66	101.43	19.57	109.10	26.43	109.38	-39.82	59,739	-28.70
2	81.89	-11.84	83.12	-10.55	75.25	-18.85	136.71	71.02	59,829	49.54
3	101.36	-2.98	101.56	-2.36	100.28	-6.20	72.09	5.55	39,131	1.78
4	100.23	-0.97	100.72	-0.47	97.58	-3.67	73.40	3.23	39,430	2.38
5	104.30	-1.10	104.69	-0.79	102.18	-2.82	71.50	3.56	39,792	2.34
6	99.40	-0.58	100.22	-0.58	95.01	-0.60	78.10	0.19	41,200	-0.44
7	105.18	2.00	105.56	2.16	103.15	1.15	-	-	-	-
1-當月	99.28	0.40	99.61	-13.80	97.51	0.76	90.20	-1.26	46,520	-0.68

資料來源：經濟部統計處，臺灣地區工業生產統計月報，行政院主計總處，臺灣地區薪資與生產力統計月報，人力資源統計月報。

Source : Department of Statistics, Ministry of Economic Affairs, "Industrial Production Statistics Monthly, Taiwan Area, ROC".

表四：景氣概況
Table 4. Cyclical Indicators



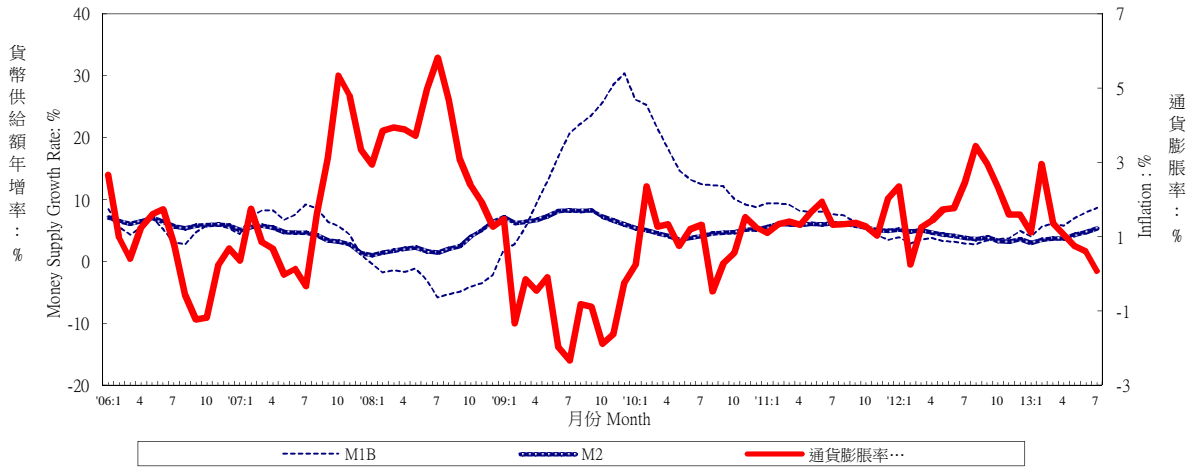
年 與 月	景氣指標				景氣對策信號判斷 (分)			失業率 (%)	
	領先指標綜合 指數	領先指標循環 波動(不含趨 勢)	同時指標綜合 指數	同時指標循環 波動(不含趨 勢)					
2000	62.43	104.96	63.68	107.51	綠	G	26	2.99	
2001	55.21	91.91	57.38	95.62	藍	B	10	4.57	
2002	61.76	100.08	61.28	98.81	綠	G	23	5.17	
2003	65.63	99.16	65.43	99.04	綠	G	23	4.99	
2004	73.28	102.74	72.59	102.04	黃紅	YR	33	4.44	
2005	75.25	99.10	76.31	100.40	黃藍	YB	22	4.13	
2006	80.34	100.82	80.67	101.08	黃藍	YB	22	3.91	
2007	84.48	102.98	85.57	104.32	綠	G	25	3.91	
2008	78.82	95.53	83.79	101.51	黃藍	YB	19	4.14	
2009	80.75	95.84	76.73	90.28	黃藍	YB	19	5.85	
2010	96.50	104.68	95.43	104.78	黃紅	YR	37	5.21	
2011	97.31	100.41	100.64	103.62	綠	G	24	4.39	
2012	99.18	98.15	100.43	99.39	黃藍	YB	17	4.24	
2012	7	97.90	97.30	100.20	99.60	藍	B	16	4.31
	8	98.00	97.30	100.30	99.50	藍	B	15	4.40
	9	98.50	97.50	100.40	99.40	黃藍	YB	20	4.32
	10	99.20	98.00	100.50	99.30	黃藍	YB	19	4.33
	11	100.00	98.70	100.50	99.20	黃藍	YB	21	4.27
	12	100.80	99.40	100.60	99.10	黃藍	YB	22	4.18
2013	1	101.60	99.90	100.60	99.00	黃藍	YB	19	4.16
	2	102.10	100.20	100.60	98.80	黃藍	YB	20	4.24
	3	102.40	100.40	100.70	98.70	黃藍	YB	18	4.17
	4	102.70	100.50	100.80	98.70	黃藍	YB	17	4.07
	5	102.80	100.50	101.10	98.80	黃藍	YB	19	4.06
	6	102.80	100.30	101.30	98.87	綠	G	23	4.14
	7	102.80	100.20	101.50	98.87	黃藍	YB	20	4.25

資料來源：行政院經建會，台灣景氣指標，經濟部統計處，國內外經濟統計指標速報。

表五：物價與金融概況

Table 5. Prices and Financial Situation

貨幣供給額與通貨膨脹率
Money Supply Growth Rate and Inflation

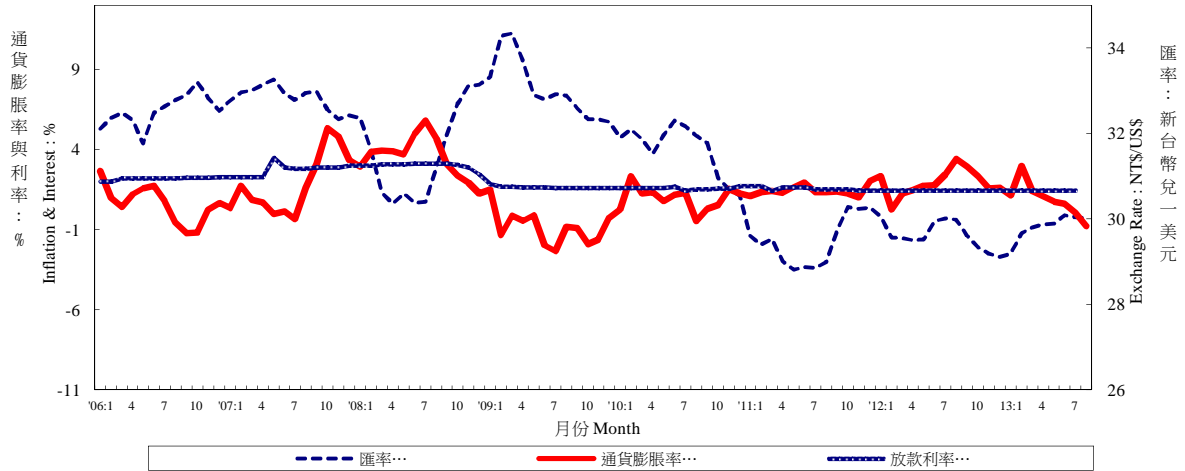


年與月 Year & Month	躉售物價 (基期90年=100) Wholesale Prices (2001=100)		消費者物價 (基期90年=100) Consumer Prices (2001=100)		貨幣供給額年增率 Money Supply (Annual Growth Rate)		
	指數 Index (%)	年增率 Annual Rate of Change (%)	指數 Index (%)	年增率 Annual Rate of Change (%)	M1A (%)	M1B (%)	M2 (%)
2000	77.32	1.82	89.82	1.25	7.36	10.58	7.04
2001	76.28	-1.35	89.82	0.00	-4.69	-1.02	5.79
2002	76.32	0.05	89.64	-0.20	8.59	17.01	3.55
2003	78.21	2.48	89.39	-0.28	11.28	11.82	3.77
2004	83.71	7.03	90.83	1.61	21.10	18.98	7.45
2005	84.22	0.61	92.92	2.30	7.65	7.10	6.22
2006	88.96	5.63	93.48	0.60	5.72	5.30	6.22
2007	94.72	6.47	95.16	1.80	6.80	6.44	4.25
2008	99.59	5.14	98.51	3.52	0.97	-2.94	2.67
2009	90.90	-8.73	97.66	-0.86	13.38	16.54	7.22
2010	95.86	5.46	98.60	0.96	14.51	14.93	4.53
2011	100.00	4.32	100.00	1.42	8.08	7.16	5.83
2012	98.84	-1.16	101.93	1.93	3.55	3.45	4.17
2012 7	98.23	-1.55	102.53	2.46	4.05	2.88	3.80
8	99.26	-0.91	103.53	3.43	2.35	2.73	3.69
9	99.03	-2.35	103.19	2.95	2.54	3.35	3.96
10	97.60	-3.73	103.12	2.33	3.21	3.57	3.29
11	96.62	-3.92	102.34	1.59	3.69	3.65	3.26
12	96.29	-3.95	102.59	1.60	4.72	4.91	3.67
2013 1	96.48	-3.83	102.41	1.12	5.94	3.97	2.99
2	97.86	-2.28	102.90	2.96	10.26	5.66	3.53
3	97.42	-3.08	101.42	1.36	9.55	6.03	3.78
4	96.72	-3.73	102.05	1.05	7.95	5.72	3.71
5	95.79	-3.54	102.24	0.74	8.54	7.04	4.32
6	96.22	-2.07	102.75	0.60	9.02	7.89	4.82
7	96.03	-2.24	102.59	0.06	9.68	8.63	5.42
8	96.43	-2.85	102.71	-0.79	-	-	-
1-當月	96.62	-2.96	102.38	0.88	8.71	6.42	4.08

資料來源：中央銀行經濟研究處，臺灣地區金融統計月報，臺灣證券交易所，證券統計資料月報。

Source : Economic Research Department, The Central Bank of China. Financial Statistics Monthly, Taiwan District ROC.

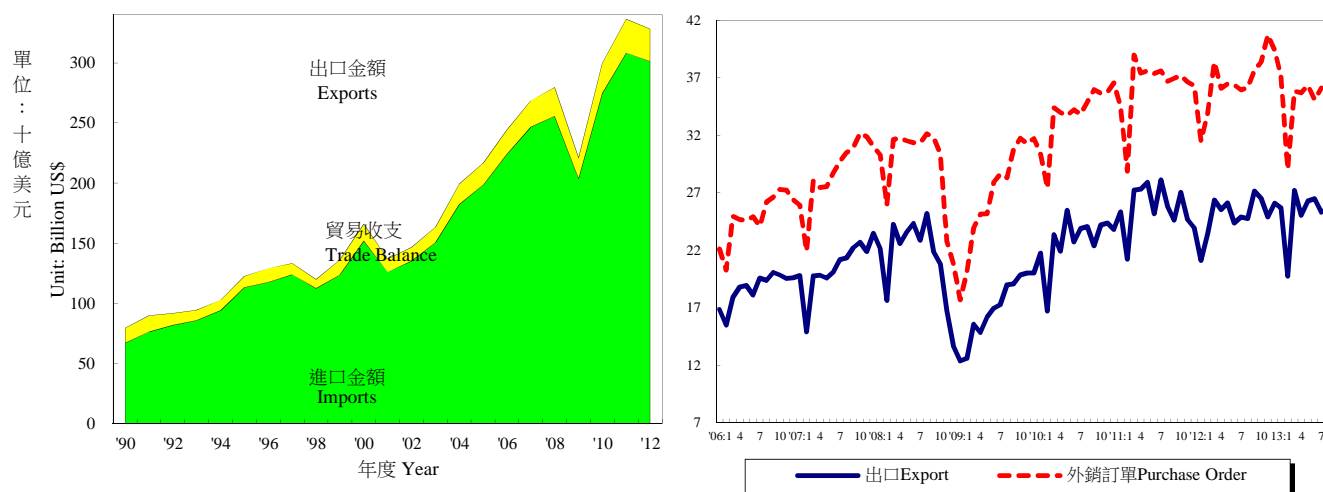
利率、通貨膨脹率與匯率
Interest Rate, Exchange Rate and Inflation



年與月 Year & Month	存款 加權平均利率 Weighted Average Interest Rates on Deposits (%)	基本放款利率 Short Term Loans (1 Year, Max) Interest Rate (%)	商業本票 初級市場 180天利率 Commercial Paper Primary Mkt.(180d) Interest Rate (%)	股票價格 Stock Prices		匯率 Exchange Rate	
				指數 Index (%)	年增率 Annual Rate of Change (%)	新臺幣 兌一美元 NT\$ Against US\$	新臺幣 兌一日元 NT\$ Against Yen
2000	4.62	7.86	5.62	7,847	5.66	31.23	0.2898
2001	4.09	7.78	4.17	4,907	-37.46	33.80	0.2781
2002	1.83	7.46	2.75	5,247	6.91	34.58	0.2757
2003	1.11	7.10	1.80	5,144	-1.96	34.42	0.2969
2004	1.08	7.07	1.61	6,033	17.30	33.42	0.3089
2005	1.34	7.32	2.00	6,090	0.94	32.17	0.2918
2006	1.61	7.53	2.19	6,842	12.35	32.53	0.2797
2007	1.90	7.93	2.74	8,489	24.08	32.84	0.2789
2008	1.98	8.15	3.03	7,065	-16.78	31.52	0.3049
2009	0.39	6.51	1.65	6,393	-9.51	33.05	0.3532
2010	0.56	6.21	1.60	7,931	24.05	31.64	0.3605
2011	0.83	6.36	1.59	8,186	3.22	29.46	0.3692
2012	0.88	6.52	1.47	7,422	-9.33	29.61	0.3711
2012 7	0.88	6.56	1.44	7,187	-17.21	30.01	0.3799
8	0.88	6.56	1.45	7,410	-4.55	29.99	0.3812
9	0.88	6.56	1.45	7,610	3.05	29.61	0.3788
10	0.88	6.47	1.44	7,438	1.27	29.34	0.3715
11	0.88	6.47	1.44	7,256	-0.26	29.19	0.3612
12	0.88	6.47	1.44	7,631	9.50	29.12	0.3484
2013 1	0.88	6.45	1.44	7,759	8.11	29.18	0.3273
2	0.88	6.45	1.46	7,933	0.98	29.66	0.3184
3	0.88	6.45	1.46	7,907	-1.41	29.80	0.3144
4	0.88	6.45	1.45	7,893	3.57	29.88	0.3058
5	0.88	6.45	1.45	8,272	12.44	29.89	0.2957
6	0.88	6.45	1.45	7,989	11.84	30.09	0.3091
7	0.88	6.45	1.45	8,102	12.73	30.04	0.3012
8	-	6.45	-	7,932	7.04	30.03	0.3069
1-當月	0.88	6.45	1.45	7,973	6.72	29.82	0.3099

表六：臺灣進出口貿易

Table 6. Foreign Trade Values



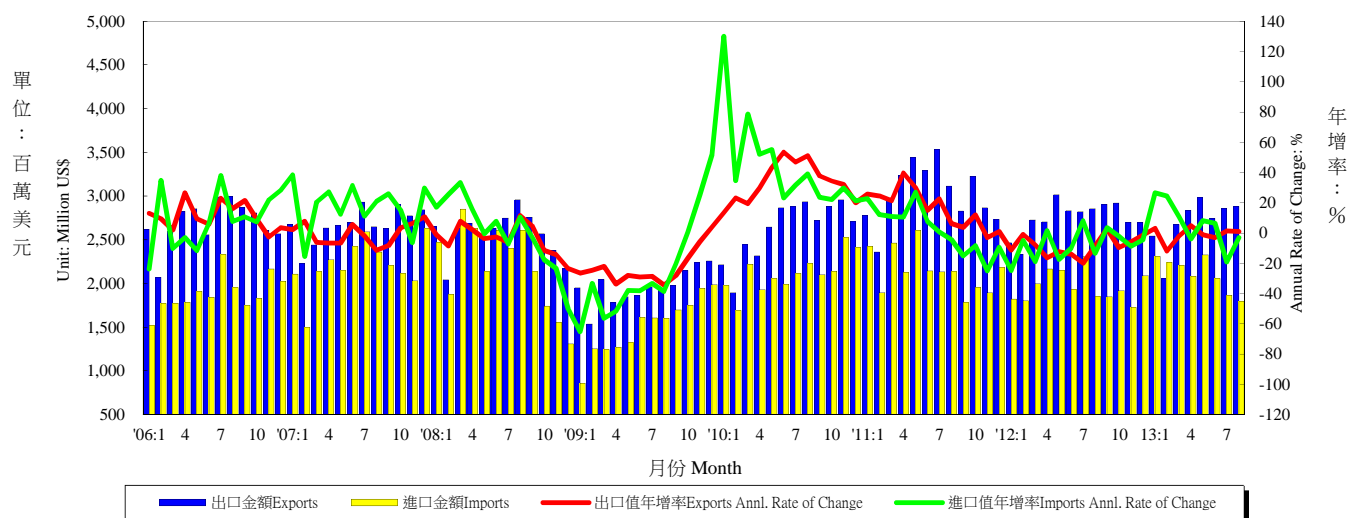
年與月 Year & Month	海關進出口貿易額 Export & Import Values of Foreign Trade					外銷訂單 Purchase Order for Exports	
	出口金額 (百萬美元) Amount (Mil. US\$)	年增率 Annual Rate of Change (%)	進口金額 (百萬美元) Amount (Mil. US\$)	年增率 Annual Rate of Change (%)	貿易收支 (百萬美元) Trade Balance	金額 (百萬美元) Amount (Mil. US\$)	年增率 Annual Rate of Change (%)
2000	151,950	22.80	140,732	26.56	11,218	153,424	20.36
2001	126,314	-16.87	107,971	-23.28	18,344	135,714	-11.54
2002	135,317	7.13	113,245	4.89	22,072	150,952	11.23
2003	150,600	11.29	128,010	13.04	22,590	170,028	12.64
2004	182,370	21.10	168,758	31.83	13,613	215,087	26.50
2005	198,432	8.81	182,614	8.21	15,817	256,393	19.20
2006	224,017	12.89	202,698	11.00	21,319	299,313	16.74
2007	246,677	10.12	219,252	8.17	27,425	345,814	15.54
2008	255,629	3.63	240,448	9.67	15,181	351,723	1.71
2009	203,675	-20.32	174,371	-27.48	29,304	322,440	-8.33
2010	274,601	34.82	251,236	44.08	23,364	406,720	26.14
2011	308,257	12.26	281,438	12.02	26,820	436,125	7.23
2012	301,111	-2.32	270,727	-3.81	30,384	441,007	1.12
2012 8	24,744	-4.02	21,310	-7.89	3,434	36,152	-1.53
9	27,157	10.34	23,068	1.16	4,088	37,663	1.91
10	26,514	-1.89	23,262	-1.78	3,252	38,380	3.16
11	24,877	0.82	21,482	0.09	3,395	40,727	11.12
12	26,076	8.89	21,963	1.55	4,113	39,393	8.51
2013 1	25,672	21.55	25,161	22.19	512	37,136	17.95
2	19,731	-15.80	18,809	-8.50	922	29,040	-14.47
3	27,213	3.22	24,019	0.21	3,195	35,838	-6.60
4	25,043	-1.88	22,775	-8.18	2,268	35,687	-1.11
5	26,296	0.67	21,892	-8.00	4,404	36,326	-0.41
6	26,487	8.68	23,227	6.77	3,261	35,096	-3.54
7	25,304	1.64	22,094	-7.62	3,210	36,114	0.49
8	25,644	3.64	21,057	-1.19	4,587	-	-
1-當月	201,392	2.46	179,033	-0.92	22,359	245,237	-1.39

資料來源：財政部統計處，臺灣地區進出口貿易統計月報，經濟部統計處，臺灣地區外銷訂單統計速報。

Source : Department of Statistics, Ministry of Finance, "Primary Statistics of Export & Import."

表七：臺灣對美國之進出口狀況

Table 7. Trade with the United States



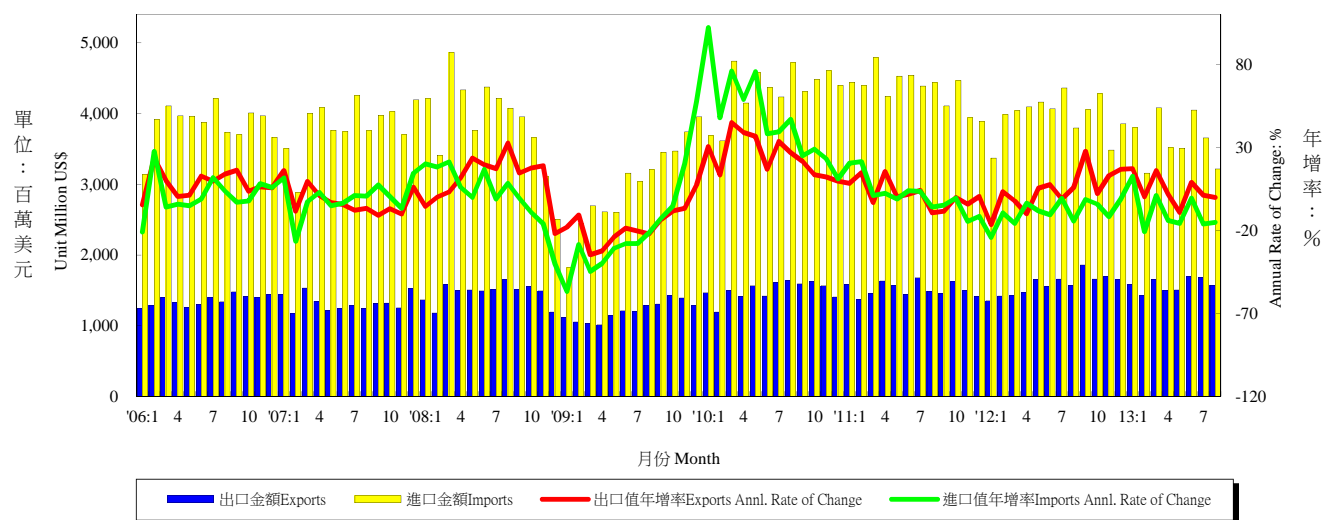
年與月 Year & Month	出口值 Exports			進口值 Imports			出入超 Trade Balance	貿易總額 Total Trade Amount	
	金額 (百萬美元) Amount (Mil. US\$)	年增率 Annual rate of change (%)	份額 Export share (%)	金額 (百萬美元) Amount (Mil. US\$)	年增率 Annual rate of change (%)	份額 Export share (%)	金額 (百萬美元) Amount (Mil. US\$)	金額 (百萬美元) Amount (Mil. US\$)	年增率 Annual rate of change (%)
2000	35,588	13.56	23.42	25,270	27.51	17.96	10,319	60,858	18.47
2001	28,136	-20.94	22.27	18,407	-27.16	17.05	9,728	46,543	-23.52
2002	27,365	-2.74	20.22	18,256	-0.82	16.12	9,110	45,621	-1.98
2003	26,554	-2.97	17.63	16,995	-6.90	13.28	9,558	43,549	-4.54
2004	28,751	8.27	15.77	21,780	28.16	12.91	6,971	50,531	16.03
2005	29,114	1.26	14.67	21,171	-2.80	11.59	7,943	50,285	-0.49
2006	32,361	11.15	14.45	22,664	7.06	11.18	9,696	55,025	9.43
2007	32,077	-0.88	13.00	26,508	16.96	12.09	5,569	58,585	6.47
2008	30,791	-4.01	12.05	26,327	-0.68	10.95	4,464	57,118	-2.51
2009	23,553	-23.51	11.56	18,154	-31.04	10.41	5,399	41,707	-26.98
2010	31,466	33.60	11.46	25,379	39.80	10.10	6,087	56,845	36.30
2011	36,364	15.57	11.80	25,759	1.50	9.15	10,606	62,123	9.28
2012	32,976	-9.32	10.95	23,604	-8.37	8.73	9,372	56,580	-8.92
2012 8	2,853	-8.43	11.53	1,850	-13.33	8.68	1,002	4,703	-10.42
9	2,904	2.74	10.69	1,847	3.48	8.01	1,057	4,751	3.03
10	2,920	-9.55	11.01	1,916	-2.19	8.24	1,004	4,836	-6.77
11	2,700	-5.82	10.85	1,728	-8.80	8.04	972	4,427	-7.01
12	2,699	-1.28	10.35	2,088	-4.45	9.51	611	4,787	-2.69
2013 1	2,543	3.12	9.91	2,307	26.60	9.17	236	4,850	13.09
2	2,056	-11.90	10.40	2,243	24.40	11.90	-187	4,299	3.92
3	2,674	-1.90	9.80	2,211	10.70	9.20	463	4,885	3.42
4	2,836	4.90	11.30	2,082	-3.80	9.10	754	4,918	1.05
5	2,983	-1.10	11.30	2,327	8.10	10.60	656	5,310	2.76
6	2,743	-3.10	10.40	2,056	6.40	8.90	687	4,799	0.75
7	2,863	1.40	11.30	1,865	-19.10	8.40	998	4,728	-7.81
8	2,878	0.90	11.20	1,794	-3.00	8.50	1,084	4,672	-0.66
1-當月	21,577	-0.80	10.70	16,884	5.40	9.40	4,693	38,461	1.81

資料來源：財政部統計處，臺灣地區進出口貿易統計月報。

Source : Dept. of Statistics, Ministry of Finance, "Preliminary Statistics of Export & Import."

表八：臺灣對日本之進出口狀況

Table 8. Trade with Japan



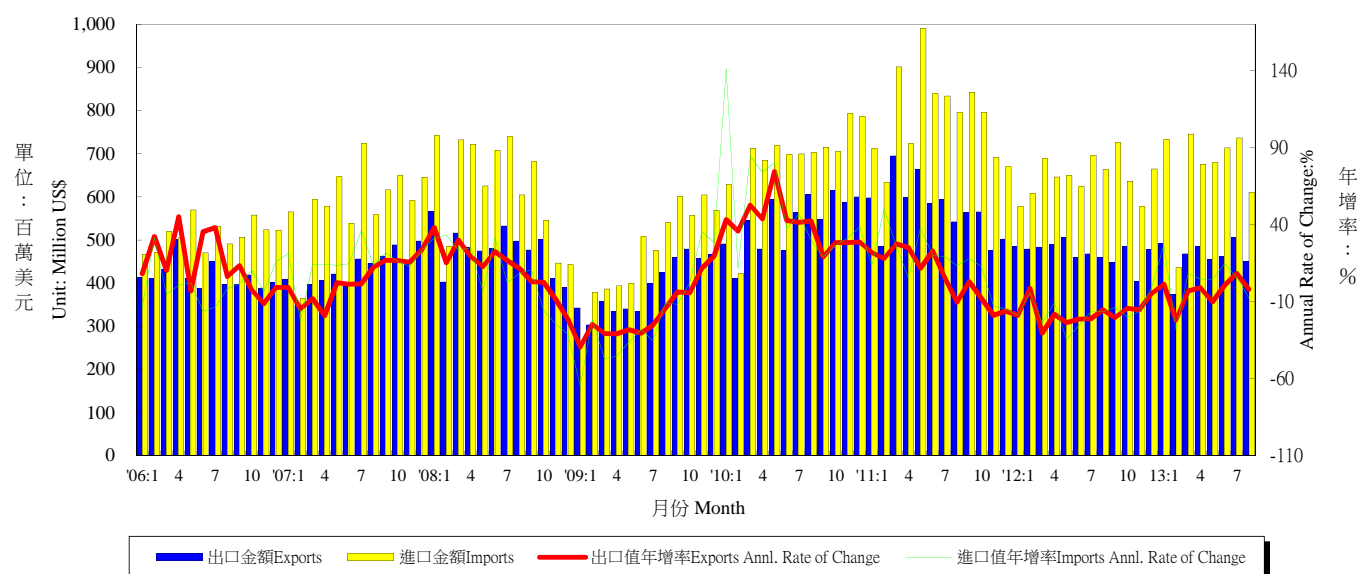
年與月 Year & Month	出口值 Exports			進口值 Imports			出入超 Trade Balance	貿易總額 Total Trade Amount	
	金額 (百萬美元) Amount (Mil. US\$)	年增率 Annual rate of change (%)	份額 Export share (%)	金額 (百萬美元) Amount (Mil. US\$)	年增率 Annual rate of change (%)	份額 Export share (%)	金額 (百萬美元) Amount (Mil. US\$)	金額 (百萬美元) Amount (Mil. US\$)	年增率 Annual rate of change (%)
2000	16,887	40.23	11.11	38,622	26.06	27.44	-21,735	55,509	30.06
2001	13,024	-22.87	10.31	25,933	-32.85	24.02	-12,909	38,958	-29.82
2002	12,368	-5.04	9.14	27,363	5.51	24.16	-14,995	39,731	1.99
2003	12,430	0.50	8.25	32,720	19.57	25.56	-20,290	45,149	13.64
2004	13,808	11.09	7.57	43,718	33.61	25.91	-29,910	57,526	27.41
2005	15,111	9.43	7.62	46,053	5.34	25.22	-30,943	61,164	6.32
2006	16,300	7.87	7.28	46,284	0.50	22.83	-29,984	62,585	2.32
2007	15,934	-2.25	6.46	45,937	-0.75	20.95	-30,003	61,870	-1.14
2008	17,556	10.18	6.87	46,508	1.24	19.34	-28,952	64,064	3.55
2009	14,502	-17.39	7.12	36,220	-22.12	20.77	-21,718	50,722	-20.83
2010	18,006	24.16	6.56	51,917	43.34	20.66	-33,911	69,923	37.86
2011	18,228	1.23	5.91	52,200	0.54	18.55	-33,972	70,428	0.72
2012	18,989	4.17	6.30	47,574	-8.86	17.59	-28,585	66,562	-5.49
2012 8	1,573	5.87	6.36	3,799	-14.43	17.83	-2,225	5,372	-9.34
9	1,862	27.69	6.86	4,058	-1.24	17.59	-2,196	5,919	6.34
10	1,660	2.15	6.26	4,281	-4.18	18.40	-2,621	5,940	-2.49
11	1,695	13.11	6.81	3,486	-11.60	16.23	-1,790	5,181	-4.79
12	1,655	16.86	6.35	3,855	-0.95	17.55	-2,200	5,509	3.80
2013 1	1,586	17.34	6.18	3,801	12.70	15.15	-2,215	5,387	14.03
2	1,426	0.40	7.20	3,161	-20.80	16.80	-1,735	4,587	-15.19
3	1,655	16.10	6.10	4,082	1.00	17.00	-2,427	5,737	4.96
4	1,499	1.90	6.00	3,523	-14.00	15.50	-2,024	5,022	-9.82
5	1,506	-9.20	5.70	3,514	-15.70	16.00	-2,008	5,020	-13.82
6	1,696	9.00	6.40	4,051	-0.40	17.40	-2,355	5,747	2.18
7	1,682	1.20	6.60	3,658	-16.10	16.60	-1,976	5,340	-11.35
8	1,572	-0.10	6.10	3,220	-15.20	15.30	-1,648	4,792	-10.80
1-當月	12,621	4.20	6.30	29,008	-9.10	16.20	-16,387	41,632	-5.41

資料來源：財政部統計處，臺灣地區進出口貿易統計月報。

Source : Dept. of Statistics, Ministry of Finance, "Preliminary Statistics of Export & Import."

表九：臺灣對德國之進出口狀況

Table 9. Trade with Germany



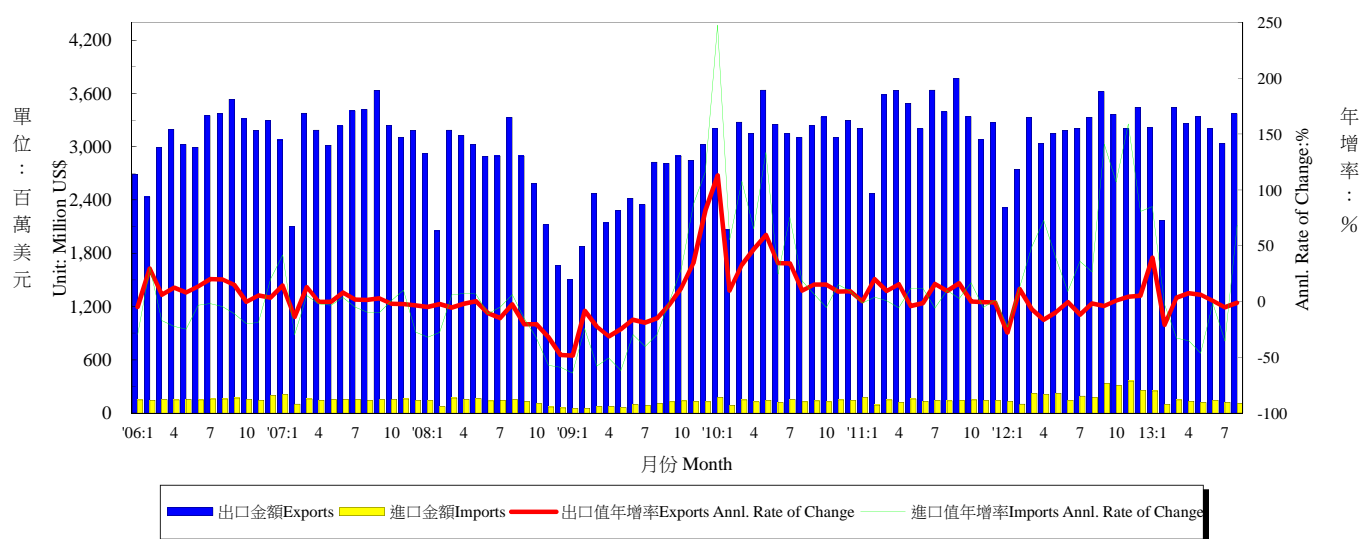
年與月 Year & Month	出口值 Exports			進口值 Imports			出入超 Trade Balance	貿易總額 Total Trade Amount	
	金額 (百萬美元) Amount (Mil. US\$)	年增率 Annual rate of change (%)	份額 Export share (%)	金額 (百萬美元) Amount (Mil. US\$)	年增率 Annual rate of change (%)	份額 Export share (%)	金額 (百萬美元) Amount (Mil. US\$)	金額 (百萬美元) Amount (Mil. US\$)	年增率 Annual rate of change (%)
2000	4,936	20.44	3.25	5,579	4.63	3.96	-643	10,515	11.50
2001	4,537	-8.10	3.59	4,274	-23.38	3.96	262	8,811	-16.21
2002	3,886	-14.33	2.87	4,448	4.07	3.93	-562	8,335	-5.40
2003	4,286	10.27	2.85	4,986	12.09	3.90	-701	9,272	11.24
2004	4,607	7.51	2.53	5,852	17.36	3.47	-1,245	10,459	12.81
2005	4,463	-3.13	2.25	6,180	5.61	3.38	-1,717	10,643	1.76
2006	5,007	12.19	2.24	6,135	-0.73	3.03	-1,128	11,142	4.69
2007	5,175	3.35	2.10	7,070	15.24	3.22	-1,895	12,245	9.90
2008	5,730	10.72	2.24	7,474	5.72	3.11	-1,745	13,204	7.83
2009	4,696	-18.04	2.31	5,673	-24.10	3.25	-977	10,369	-21.47
2010	6,512	38.67	2.37	8,264	45.68	3.29	-1,752	14,776	42.50
2011	6,876	5.60	2.23	9,428	14.09	3.35	-2,552	16,304	10.35
2012	5,645	-17.82	1.87	7,755	-17.74	2.86	-2,110	13,400	-17.81
2012 8	459	-15.25	1.86	663	-16.65	3.11	-203	1,122	-16.08
9	448	-20.43	1.65	726	-13.84	3.15	-278	1,175	-16.48
10	485	-14.28	1.83	636	-20.02	2.74	-152	1,121	-17.64
11	403	-15.29	1.62	577	-16.50	2.69	-174	980	-16.01
12	478	-4.85	1.83	664	-0.75	3.03	-187	1,142	-2.51
2013 1	491	1.37	1.91	733	26.74	2.91	-241	1,224	15.17
2	374	-21.95	1.89	436	-28.15	2.32	-62	810	-25.41
3	468	-3.18	1.72	745	8.28	3.10	-278	1,213	3.55
4	485	-0.99	1.94	675	4.59	2.97	-190	1,161	2.18
5	456	-10.11	1.73	680	4.62	3.10	-224	1,135	-1.83
6	462	0.56	1.74	714	14.47	3.07	-252	1,176	8.52
7	507	8.24	2.00	736	5.86	3.33	-229	1,243	6.82
8	450	-2.06	1.75	610	-7.90	2.90	-160	1,060	-5.51
1-當月	3,693	-3.61	1.83	5,330	3.47	2.98	-1,637	9,022	0.45

資料來源：財政部統計處，臺灣地區進出口貿易統計月報

Source : Dept. of Statistics, Ministry of Finance, "Preliminary Statistics of Export & Import."

表十：臺灣對香港之進出口狀況

Table 10. Trade with Hong Kong

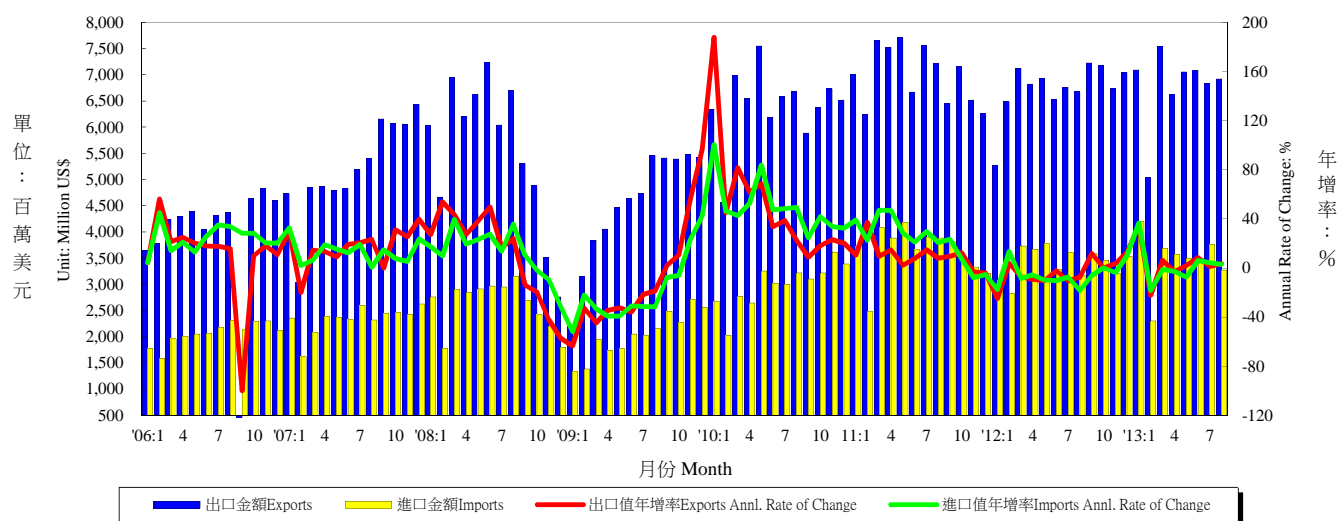


年與月 Year & Month	出口值 Exports			進口值 Imports			出入超 Trade Balance	貿易總額 Total Trade Amount	
	金額 (百萬美元) Amount (Mil. US\$)	年增率 Annual rate of change (%)	份額 Export share (%)	金額 (百萬美元) Amount (Mil. US\$)	年增率 Annual rate of change (%)	份額 Export share (%)	金額 (百萬美元) Amount (Mil. US\$)	金額 (百萬美元) Amount (Mil. US\$)	年增率 Annual rate of change (%)
2000	32,742	22.06	21.55	2,364	6.32	1.68	30,378	35,106	11.50
2001	28,713	-12.31	22.73	2,052	-13.22	1.90	26,661	30,764	-12.37
2002	32,960	14.79	24.36	1,915	-6.66	1.69	31,045	34,875	13.36
2003	30,868	-6.35	20.50	1,917	0.12	1.50	28,951	32,785	-5.99
2004	32,896	6.57	18.04	2,309	20.44	1.37	30,587	35,205	7.38
2005	34,036	3.46	17.15	2,110	-8.64	1.16	31,926	36,145	2.67
2006	37,381	9.83	16.69	1,881	-10.86	0.93	35,501	39,262	8.62
2007	37,980	1.60	15.40	1,825	-2.96	0.83	36,155	39,805	1.38
2008	32,690	-13.93	12.79	1,493	-18.20	0.62	31,197	34,183	-14.12
2009	29,446	-9.92	14.46	1,123	-24.80	0.64	28,324	30,569	-10.57
2010	37,807	28.39	13.77	1,628	44.99	0.65	36,179	39,435	29.00
2011	40,088	6.03	13.00	1,676	2.96	0.60	38,413	41,764	5.91
2012	37,937	-5.36	12.60	2,659	58.70	0.98	35,278	40,596	-2.80
2012 8	3,332	-1.79	13.46	175	26.42	0.82	3,157	3,507	-0.69
9	3,621	-3.95	13.33	336	140.86	1.46	3,285	3,957	1.22
10	3,363	0.75	12.68	309	107.20	1.33	3,054	3,672	5.30
11	3,207	4.12	12.89	361	159.04	1.68	2,846	3,568	10.83
12	3,443	5.23	13.20	255	80.63	1.16	3,188	3,697	8.34
2013 1	3,217	39.23	12.53	249	85.07	0.99	2,968	3,466	41.76
2	2,168	-21.09	10.99	98	-2.36	0.52	2,070	2,266	-20.43
3	3,445	3.36	12.66	149	-32.93	0.62	3,296	3,593	1.10
4	3,260	7.37	13.02	134	-35.16	0.59	3,126	3,394	4.61
5	3,338	5.93	12.69	119	-46.39	0.54	3,219	3,457	2.49
6	3,202	0.60	12.09	143	-1.66	0.62	3,059	3,346	0.50
7	3,038	-5.33	12.01	124	-35.49	0.56	2,914	3,161	-7.04
8	3,372	-1.24	13.15	104	68.34	0.49	3,268	3,476	-0.88
1-當月	25,040	3.03	12.43	1,120	-19.89	0.63	23,920	26,160	1.78

資料來源：財政部統計處，臺灣地區進出口貿易統計月報。

Source : Dept. of Statistics, Ministry of Finance, "Preliminary Statistics of Export & Import."

表十一：兩岸經貿
Table 11. Trade Across the Taiwan Straits



年與月 Year & Month	臺灣對大陸之進出口狀況 Trade With China						出入超金額 Net Export Amount (Mil.US\$)	匯率 人民幣兌 一美元 Exchange Rate (RMB/US\$)	大陸 消費者物價 總指數 年增率 China's Consumer Price Index
	出口值 Exports			進口值 Imports					
	金額 (百萬美元) Amount (Mil. US\$)	年增率 Annual rate of change (%)	份額 Export share (%)	金額 (百萬美元) Amount (Mil. US\$)	年增率 Annual rate of change (%)	份額 Export share (%)			
2000	4,391	68.77	2.89	6,229	37.55	4.43	-1,838	8.28	0.35
2001	4,895	11.47	3.88	5,903	-5.24	5.47	-1,008	8.28	0.73
2002	10,527	115.04	7.78	7,969	34.99	7.04	2,558	8.28	-1.48
2003	22,891	117.45	15.20	11,018	38.27	8.61	11,873	8.28	1.95
2004	36,349	58.79	19.93	16,792	52.41	9.95	19,557	8.28	2.70
2005	43,644	20.07	21.99	20,094	19.66	11.00	23,550	8.19	-2.01
2006	51,809	18.71	23.13	24,783	23.34	12.23	27,025	7.97	-0.34
2007	62,417	20.48	25.30	28,015	13.04	12.78	34,402	7.61	3.25
2008	66,884	7.16	26.16	31,391	12.05	13.06	35,492	6.95	1.08
2009	54,249	-18.89	26.63	24,423	-22.20	14.01	29,825	6.83	-6.22
2010	76,935	41.82	28.02	35,946	47.18	14.31	40,989	6.77	3.33
2011	83,965	9.14	27.24	43,607	21.31	15.49	40,358	6.46	5.41
2012	80,729	-3.85	26.81	40,910	-6.16	15.11	39,819	6.31	2.60
2012 8	6,673	-7.47	26.97	3,174	-18.22	14.90	3,499	6.34	2.00
9	7,221	11.86	26.59	3,585	-6.13	15.54	3,637	6.34	1.90
10	7,166	0.02	27.03	3,462	0.23	14.88	3,704	6.31	1.70
11	6,740	3.49	27.09	3,199	-3.81	14.89	3,541	6.30	2.00
12	7,035	12.56	26.98	3,534	10.05	16.09	3,501	6.29	2.50
2013 1	7,091	34.78	27.62	4,193	36.61	16.66	2,898	6.28	2.03
2	5,047	-22.17	25.58	2,303	-18.33	12.24	2,744	6.28	3.22
3	7,542	6.02	27.71	3,687	-1.23	15.35	3,855	6.27	2.07
4	6,621	-2.92	26.44	3,573	-2.70	15.69	3,048	6.25	2.39
5	7,056	1.97	26.83	3,492	-7.41	15.95	3,563	6.20	2.10
6	7,086	8.56	26.75	3,491	6.25	15.03	3,595	6.17	2.70
7	6,838	1.13	27.02	3,762	4.42	17.03	3,076	6.17	2.70
8	6,915	3.65	26.97	3,273	3.10	15.54	3,643	6.12	2.60
1-當月	54,195	3.10	26.91	27,774	2.37	15.51	26,421	6.22	2.48

資料來源：財政部統計處，臺灣地區進出口貿易統計月報。

Source : Dept. of Statistics, Ministry of Finance, "Preliminary Statistics of Export & Import."