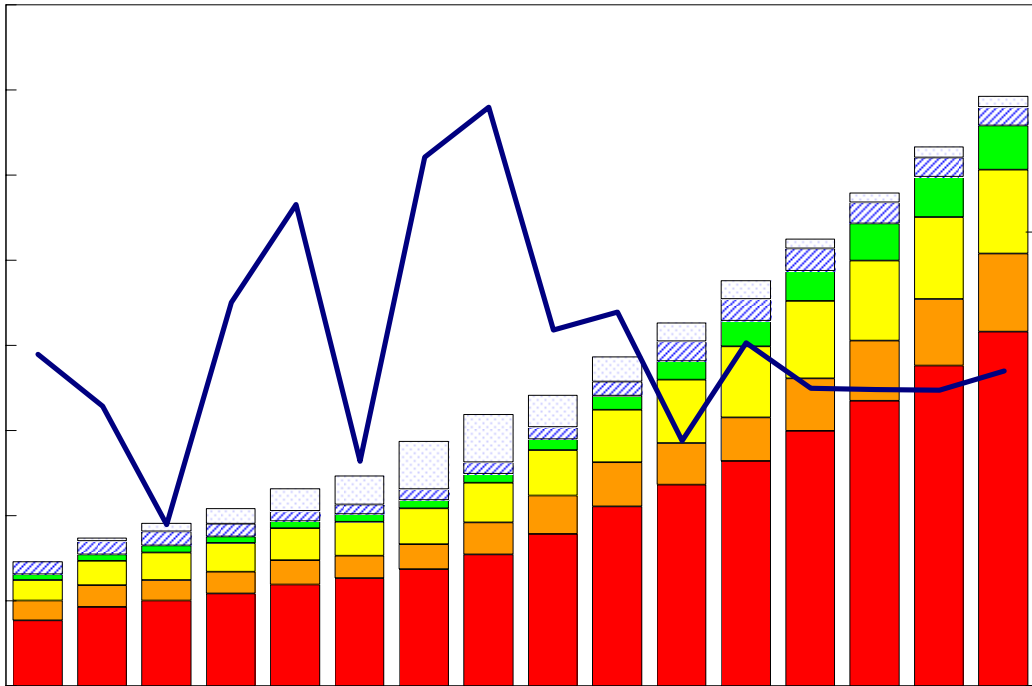


# 臺灣重要經濟變動指標

## Major Economic Indicators for Taiwan



中華經濟研究院

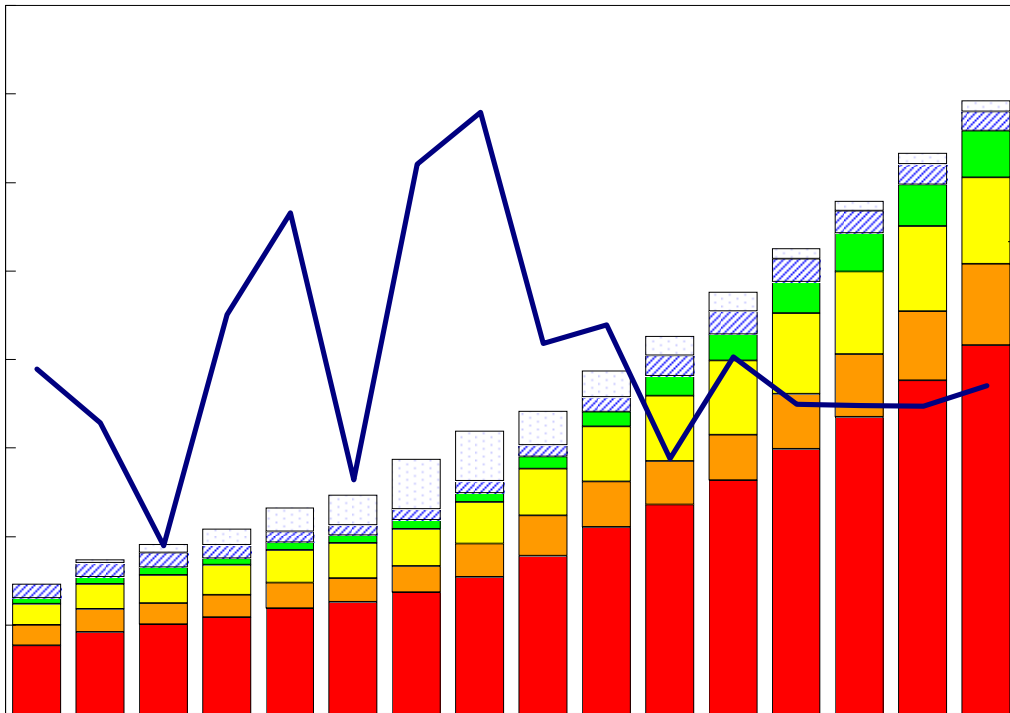
中華民國一〇〇年二月

Chung-Hua Institution for Economic Research

February 2011

# 臺灣重要經濟變動指標

## Major Economic Indicators for Taiwan



經濟展望中心 編製

The Center for Economic Forecasting

# 目次

# Index

臺灣經濟預測.....I	Taiwan's Macroeconomic Forecasts.....I
表一：主要總體經濟指標.....2-3	Table 1 : GDP Components by Expenditure.....2-3
表二：各業產值概況.....4-5	Table 2 : GDP Components by Industry.....4-5
表三：生產概況.....6	Table 3 : Industry Indicators.....6
表四：景氣概況.....7	Table 4 : Cyclical Indicators.....7
表五：物價與金融概況.....8-9	Table 5 : Prices and Financial Situation.....8-9
表六：臺灣進出口貿易.....10	Table 6 : Foreign Trade Values.....10
表七：臺灣對美國之進出口狀況.....11	Table 7 : Trade with the United States .....11
表八：臺灣對日本之進出口狀況.....12	Table 8 : Trade with Japan.....12
表九：臺灣對德國之進出口狀況.....13	Table 9 : Trade with Germany.....13
表十：臺灣對香港之進出口狀況.....14	Table 10 : Trade with Hong Kong .....14
表十一：兩岸經貿.....15	Table 11 : Trade across the Taiwan Straits.....15

# 臺灣經濟預測

## Taiwan's Macroeconomic Forecasts

	2010年	2011年季預測				2009年	2010年	2011年
	第4季 Q4	Year 2010 Quarterly				實際值 2009	預測值 2010	預測值 2011
		第1季 Q1	第2季 Q2	第3季 Q3	第4季 Q4			
<b>GDP, GNP及其組成, 新臺幣十億元(2006年基期), GDP, GNP and Major Components, Billions of 2006 NT Dollars</b>								
<b>實質GDP, Real GDP</b>	3,676.29	3,422.97	3,607.01	3,775.60	3,889.41	12,818.94	14,054.96	14,694.99
年變動率, yoy(%)	3.49	3.39	4.22	4.68	5.80	-1.93	9.64	4.55
<b>實質GNP, Real GNP</b>	3,749.88	3,561.14	3,692.55	3,859.40	3,979.50	13,214.35	14,454.79	15,092.59
年變動率, yoy(%)	2.23	2.95	3.57	4.86	6.12	-1.17	9.39	4.41
<b>每人平均GNP, per capita GNP<sup>[1]</sup></b>	5,119.34	4,854.19	4,986.52	5,292.24	5,713.24	16,895.00	19,157.34	20,846.19
年變動率, yoy(%)	9.79	4.46	7.91	10.95	11.60	-5.26	13.39	8.82
<b>民間消費, Private Consumption</b>	1,943.10	1,967.34	1,915.63	1,980.29	1,965.53	7,409.89	7,659.16	7,828.79
年變動率, yoy(%)	1.71	3.80	2.55	1.41	1.15	1.08	3.36	2.21
<b>固定資本形成, Total Fixed Investment</b>	711.81	563.88	635.01	733.02	727.83	2,141.59	2,631.40	2,659.74
年變動率, yoy(%)	11.28	-0.60	-0.72	2.85	2.25	-11.01	22.87	1.08
<b>民間投資, Private Fixed Investment</b>	491.32	462.58	483.63	575.19	515.60	1,511.37	1,988.23	2,037.01
年變動率, yoy(%)	14.66	0.23	1.90	2.57	4.94	-17.91	31.55	2.45
<b>財貨與服務之輸出, Exports, gds+serv</b>	2,746.54	2,503.92	2,799.32	2,870.61	2,955.53	8,398.70	10,473.98	11,129.39
年變動率, yoy(%)	12.21	5.38	5.45	6.45	7.61	-8.71	24.71	6.26
<b>財貨與服務之輸入, Imports, gds+serv</b>	2,161.60	1,986.98	2,154.69	2,248.14	2,225.42	6,548.90	8,404.33	8,615.24
年變動率, yoy(%)	14.27	1.84	2.03	3.14	2.95	-12.83	28.33	2.51
<b>海關出口(fob, 億美元), Merchandise Export(fob, US \$bn)</b>	707.94	648.04	748.69	767.42	787.49	2,036.75	2,730.42	2,951.64
年變動率, yoy(%)	18.24	4.89	6.77	9.10	11.24	-20.32	34.06	8.10
<b>海關進口(cif, 億美元), Merchandise Import (cif, US \$bn)</b>	684.73	592.99	661.18	744.76	745.09	1,743.71	2,586.50	2,744.01
年變動率, yoy(%)	29.67	4.25	5.03	5.88	8.82	-27.48	48.33	6.09
<b>GDP平減指數, GDP Deflator</b>	97.20	97.82	95.25	95.89	99.92	97.52	96.85	97.22
年變動率, yoy(%)	2.63	-1.23	-0.21	0.2	2.79	0.97	-0.7	0.39
<b>躉售物價指數, Wholesale Price Index</b>	108.40	109.20	112.43	111.56	111.02	102.17	107.88	111.05
年變動率, yoy(%)	3.33	2.57	3.58	3.19	2.42	-8.73	5.59	2.94
<b>消費者物價指數, Consumer Price Index</b>	106.50	105.74	106.62	107.58	107.86	104.47	105.52	106.95
年變動率, yoy(%)	1.26	0.96	1.40	1.78	1.28	-0.87	1.00	1.36
<b>M2貨幣存量(日平均), Money Stock (M2)</b>	30,823.74	31,378.04	31,453.60	31,720.15	32,471.72	28,753.14	30,115.41	31,755.88
年變動率, yoy(%)	5.62	5.80	5.40	5.26	5.35	7.21	4.74	5.45
<b>臺幣兌美元匯率, Exchange Rate(NT\$/US\$)</b>	30.78	31.05	30.48	30.18	30.00	33.06	31.66	30.43
年變動率, yoy(%) <sup>[3]</sup>	4.75	2.83	4.55	5.59	2.54	-4.83	4.23	3.89
<b>商業本票利率, 31-90 day Commercial Paper Rate</b>	0.65	0.78	0.86	0.98	1.04	0.24	0.42	0.91
年變動率, yoy(%)	166.04	159.43	151.42	144.44	60.51	-87.78	79.86	116.38
<b>失業率(%), Unemployment Rate(%)</b>	4.97	4.94	4.75	4.95	4.70	5.85	5.26	4.83

資料來源: 中華經濟研究院, 經濟展望中心, 2010年12月16日。

Source: CEF, CIER, Dec. 16, 2010.

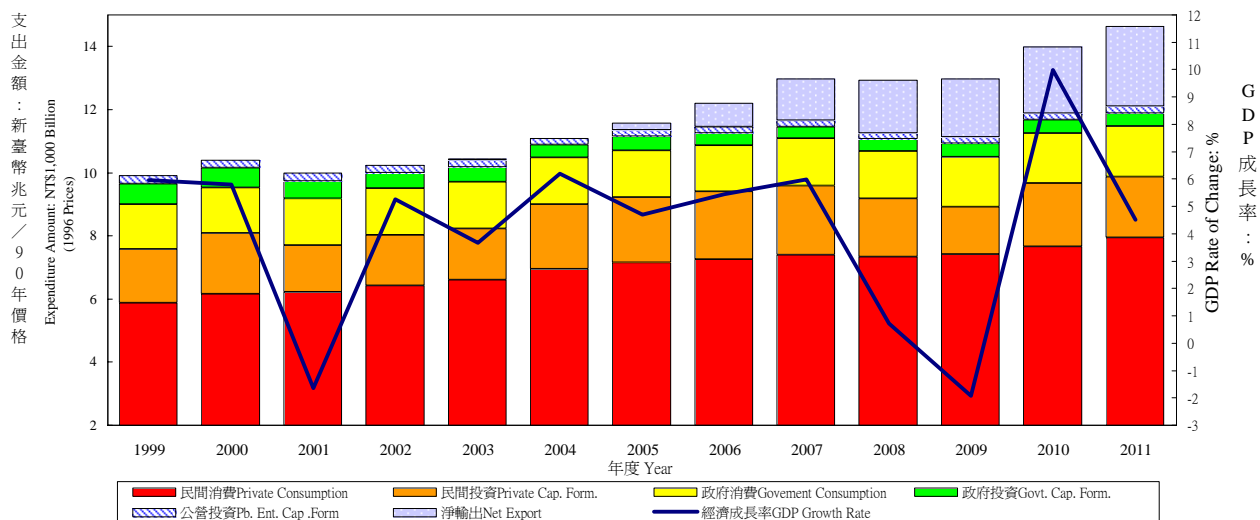
說明: [1]: 有關每人平均GNP在此以美元表示。

[2]: 有關匯率年增率(%), 正值表示升值, 負數表示貶值比率。

# 表一：主要總體經濟指標

## Table 1. GDP Components by Expenditure

### 實質GDP各需求支出及成長率 Real GDP Expenditure & Growth Rate



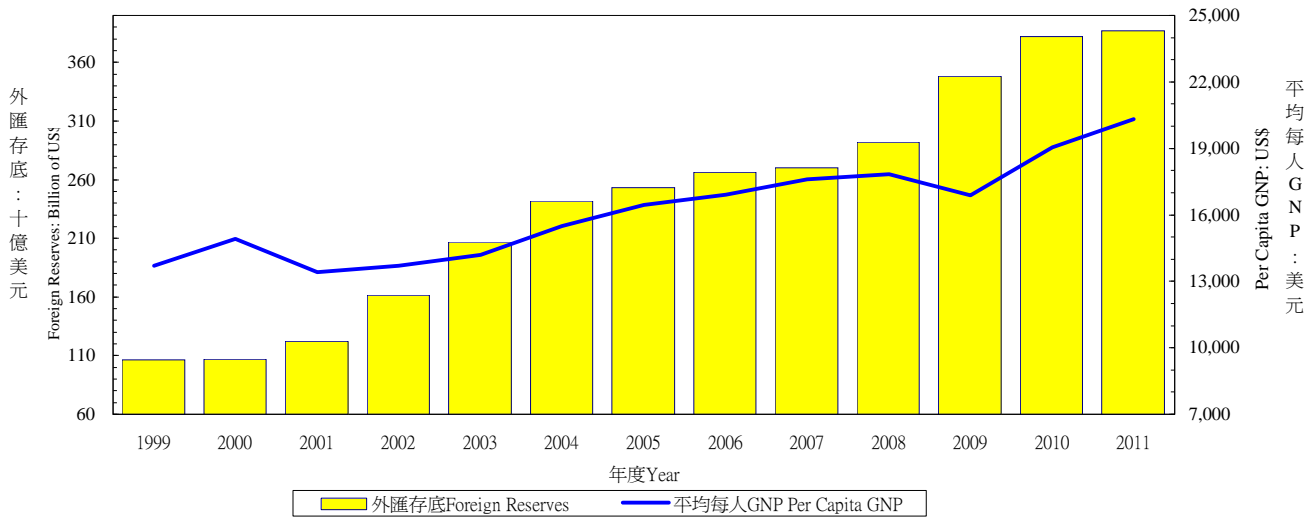
年與季 Year & Quarter	GDP 經濟 成長率 Economic Growth Rate (%)	名目GDP (新台幣 十億元) GDP (Bil.NT\$)	民間消費 Private Consumption Expenditure		民間固定投資 Private Spe. Gross Fixed Cap. Formation		商品及勞務輸出 Exports of Goods and Services		商品及勞務輸入 Imports of Goods and Services		政府消費 Government Consumption Expenditure	
			佔 GDP /GDP (%)	年增率 Annual Rate of Change (%)	佔 GDP /GDP (%)	年增率 Annual Rate of Change (%)	佔 GDP /GDP (%)	年增率 Annual Rate of Change (%)	佔 GDP /GDP (%)	年增率 Annual Rate of Change (%)	佔 GDP /GDP (%)	年增率 Annual Rate of Change (%)
1999	5.97	9,649	58.72	5.07	16.45	-0.15	47.28	12.27	44.77	4.13	13.80	-3.94
2000	5.80	10,187	58.78	4.75	17.66	13.19	52.93	18.31	50.76	15.34	13.38	1.21
2001	-1.65	9,930	60.70	0.98	13.64	-22.98	49.97	-8.60	44.52	-14.75	14.01	1.86
2002	5.26	10,412	59.91	3.26	13.81	7.12	52.22	11.37	45.03	6.21	13.57	1.55
2003	3.67	10,696	59.82	2.91	14.06	1.93	55.49	10.23	48.47	7.68	13.24	-1.23
2004	6.19	11,365	59.91	5.17	17.71	25.62	61.42	15.40	57.74	17.50	12.71	0.57
2005	4.70	11,740	60.40	2.90	17.21	1.53	62.53	7.78	58.12	3.16	12.46	0.19
2006	5.44	12,243	59.20	1.49	17.57	3.31	68.00	11.41	61.88	4.57	12.00	-0.71
2007	5.98	12,911	58.14	2.08	17.37	1.36	72.07	9.55	64.11	2.98	11.78	2.09
2008	0.73	12,620	60.30	-0.93	15.93	-15.58	72.97	0.87	68.05	-3.71	12.39	0.83
2009	-1.93	12,477	60.75	1.08	13.15	-17.91	62.49	-8.71	53.86	-12.83	12.96	3.88
2010	9.98	13,523	58.16	3.43	16.31	31.91	73.52	24.35	66.41	27.37	12.18	0.88
2011	4.51	14,032	58.59	3.51	15.51	-2.76	74.85	6.20	66.75	2.44	11.88	0.84
2009 4	9.24	3,365	58.22	5.30	13.80	18.03	66.99	19.66	59.10	16.08	13.03	3.79
2010 1	13.59	3,279	59.23	3.02	15.44	42.29	69.55	39.11	63.26	49.32	13.57	2.91
2	12.86	3,303	58.04	4.32	15.70	39.22	78.04	32.89	69.56	34.04	10.99	1.33
3	9.80	3,451	58.00	4.48	18.28	34.28	74.78	20.10	68.25	22.80	11.56	0.35
4	4.70	3,489	57.43	1.96	15.74	15.92	71.73	10.99	64.57	10.94	12.60	-0.57
2011 1	3.09	3,334	60.97	4.12	15.17	-1.63	72.00	6.44	65.72	3.51	13.43	0.37
2	4.27	3,393	58.94	3.53	15.79	1.63	78.42	4.84	70.12	1.98	10.86	1.09
3	4.77	3,595	58.22	3.16	16.50	-6.75	75.24	5.40	67.26	0.86	11.36	2.11
4	5.74	3,710	56.51	3.23	14.58	-3.49	73.77	8.13	64.10	3.54	11.91	-0.15

資料來源：行政院主計處，中華民國臺灣地區國民經濟動向統計季報，中央銀行經濟研究處，臺灣地區金融統計月報。

註：以上所列為政府發佈資料，本院對GDP的預測列於本刊第一部份臺灣總體經濟預測。

Source: DGBAS, Executive Yuan, "Quarterly National Economic Trends, Taiwan Area, ROC  
The Central Bank of China, Financial Statistics, Taiwan District, The Republic of China

## 外匯存底及平均每人GNP Total Foreign Reserves & Per Capita GNP



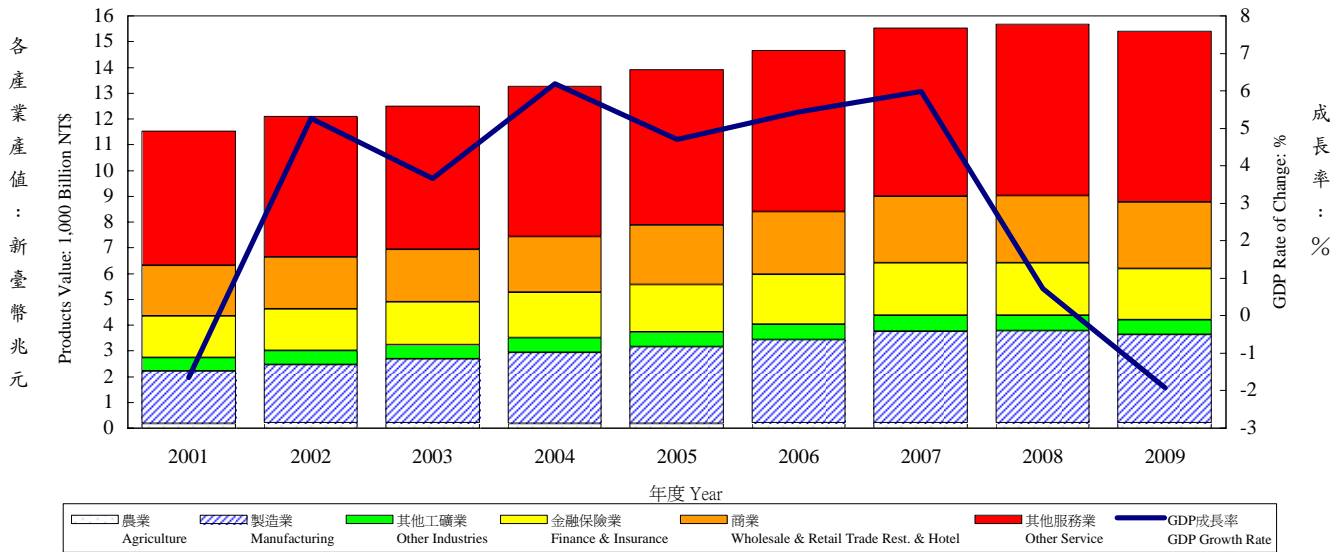
年與季 Year & Quarter	公營事業固定投資 Public Enter. Gross Fixed Capita Formation		政府固定投資 Government Gross Fixed Capita Formation		存貨增加 Increase in Stocks		國外要素淨收入 Net Factor Income From Abroad		平均每人 GNP (美元) Per Capita GNP (US\$)	外匯存底 (十億美元) Total Foreign Reserves (Billion of US\$)
	佔 GDP /GDP (%)	年增率 Annual Rate of Change (%)	佔 GDP /GDP (%)	年增率 Annual Rate of Change (%)	佔 GDP /GDP (%)	新台幣 百萬 (1996年價格) NT Mil (1996=100)	佔 GDP /GDP (%)	年增率 Annual Rate of Change (%)		
1999	2.57	13.86	5.35	3.26	0.59	74,486	0.94	31.71	13,712	106.2
2000	2.32	-3.33	4.80	-4.17	0.90	107,491	1.37	52.36	14,906	106.7
2001	2.40	-0.06	4.44	-9.22	-0.64	-80,627	1.93	37.75	13,401	122.2
2002	2.21	-2.58	3.74	-13.18	-0.42	-59,812	2.33	26.51	13,716	161.7
2003	2.09	-4.70	3.65	-4.47	0.12	12,679	3.07	35.96	14,197	206.6
2004	1.63	-20.60	3.47	-9.59	0.88	104,189	3.27	11.46	15,503	241.7
2005	1.78	14.77	3.46	2.82	0.28	34,223	2.48	-23.31	16,449	253.3
2006	1.59	-8.61	3.14	-11.21	0.38	46,283	2.55	6.28	16,911	266.1
2007	1.57	1.57	3.07	-4.46	0.11	12,867	2.58	5.12	17,596	270.3
2008	1.66	-1.98	3.53	1.18	1.27	134,441	2.49	-8.47	17,833	291.7
2009	1.79	2.71	3.94	16.01	-1.22	-153,455	3.31	31.85	16,895	348.2
2010	1.82	9.08	3.68	-1.18	0.74	109,635	3.12	1.12	19,046	382.0
2011	1.72	-3.26	3.50	-3.14	0.70	93,574	3.05	-0.56	20,332	387.1
2009 4	2.59	19.72	4.54	6.04	-0.07	-1,378	3.62	146.27	4,663	348.2
2010 1	1.14	-1.68	2.55	-12.52	1.79	69,158	4.75	16.07	4,647	355.0
2	1.91	30.91	3.86	7.93	1.04	31,671	3.32	19.44	4,621	362.4
3	1.49	-0.46	3.64	-5.69	0.50	17,652	2.26	13.98	4,770	380.5
4	2.72	7.13	4.61	2.84	-0.28	-8,846	2.25	-36.41	5,008	382.0
2011 1	1.06	-6.38	2.47	-3.20	0.61	19,414	4.40	-6.89	4,900	387.1
2	1.70	-10.38	3.54	-7.15	0.87	28,501	2.70	-17.88	4,903	--
3	1.51	5.13	3.69	3.34	0.74	24,481	2.53	13.73	5,181	--
4	2.53	-1.67	4.21	-4.99	0.59	21,178	2.65	22.43	5,348	--

# 表二：各業產值概況

## Table 2. GDP Components by Industry

### GDP各產業產值及成長率

### GDP Products Value & Growth Rate



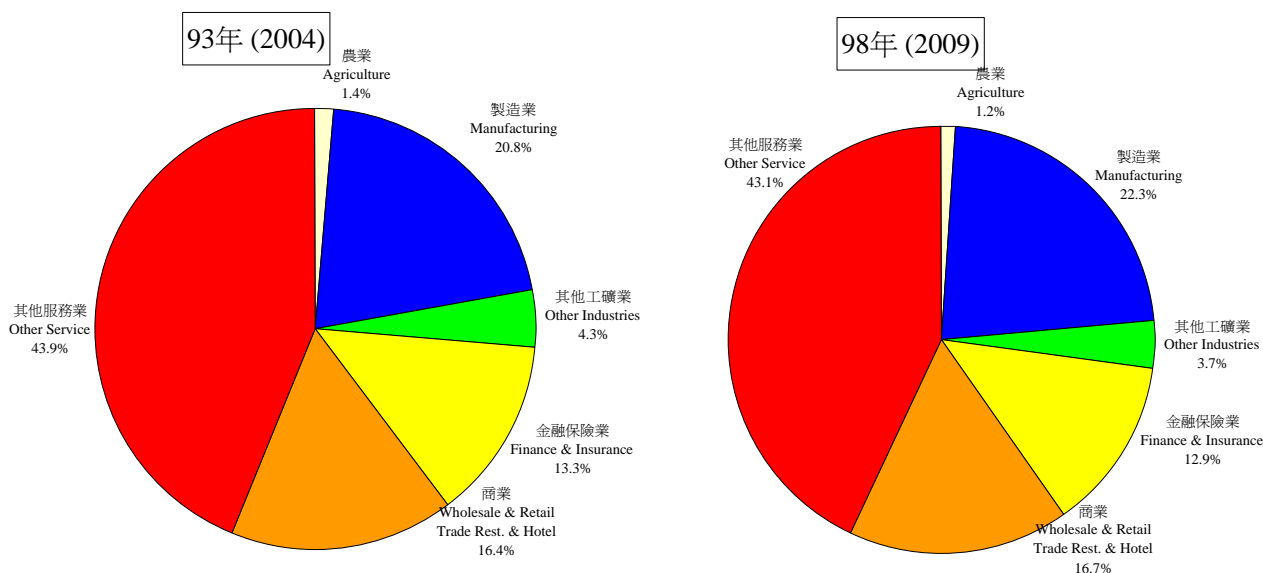
年與季 Year & Quarter	國內 生產毛額 GDP (新臺幣 十億元) 按90年價格 計算GDP (Bil. NT\$)	GDP 成長率 GDP Rate of Change (%)	產業 Sector											
			農業 Agriculture Hunting Forestry & Fishing		工業 Industries						營造業 Construction		水電燃氣業 Electricity, Gas & Water	
					合計 Sub Total		礦業 Mining & Quarring		製造業 Manufacturing					
			估GDP /GDP (%)	年增率 Annual Rate of Change (%)	估GDP /GDP (%)	年增率 Annual Rate of Change (%)	估GDP /GDP (%)	年增率 Annual Rate of Change (%)	估GDP /GDP (%)	年增率 Annual Rate of Change (%)	估GDP /GDP (%)	年增率 Annual Rate of Change (%)	估GDP /GDP (%)	年增率 Annual Rate of Change (%)
2001	9,571	-1.65	1.86	-5.98	26.75	-7.45	0.68	-14.41	21.20	-6.91	3.15	-12.86	1.72	0.03
2002	10,074	5.26	1.93	9.68	28.00	10.16	0.67	3.71	22.50	11.73	3.08	2.69	1.75	7.02
2003	10,444	3.67	1.83	-1.65	29.08	7.67	0.52	-19.28	23.89	10.09	2.85	-3.91	1.81	7.27
2004	11,090	6.19	1.63	-5.39	30.00	9.54	0.48	-1.37	24.82	10.33	2.88	7.13	1.81	6.16
2005	11,612	4.70	1.49	-4.24	30.63	6.93	0.44	-5.42	25.58	7.90	2.78	1.26	1.83	5.88
2006	12,243	5.44	1.61	13.84	31.33	7.84	0.32	-22.32	26.46	9.04	2.72	2.91	1.84	5.71
2007	12,976	5.98	1.49	-2.42	32.23	9.02	0.37	20.39	27.41	9.82	2.60	1.53	1.85	6.57
2008	13,071	0.73	1.48	0.10	32.07	0.24	0.32	-11.23	27.49	0.99	2.44	-5.55	1.82	-0.61
2009	12,819	-1.93	1.46	-3.00	31.30	-4.30	0.34	4.41	26.79	-4.40	2.29	-8.04	1.87	0.69
2008 4	3,252	-7.53	1.67	5.15	30.13	-18.84	0.25	-28.69	25.88	-20.40	2.10	-8.91	1.90	-2.93
2009 1	2,915	-8.56	1.43	-4.21	26.45	-21.79	0.32	-1.84	21.76	-24.50	2.49	-9.31	1.88	-2.51
2009 2	3,067	-7.23	1.64	-3.57	30.46	-12.97	0.41	27.32	25.76	-14.75	2.41	-10.95	1.88	7.21
2009 3	3,285	-1.21	1.24	-5.16	33.53	-4.42	0.37	-15.53	28.76	-3.99	2.43	-8.98	1.98	-2.35
2009 4	3,552	9.24	1.53	0.23	33.92	22.96	0.28	19.53	30.00	26.60	1.89	-1.79	1.76	1.19
2010 1	3,311	13.59	1.24	-1.18	31.92	37.07	0.31	8.09	27.32	42.59	2.51	14.40	1.79	8.08
2010 2	3,461	12.86	1.40	-3.60	35.13	30.17	0.31	-13.37	30.71	34.53	2.35	10.00	1.76	5.60
2010 3	3,607	9.80	1.19	4.78	36.48	19.44	0.42	24.63	31.66	20.88	2.55	15.18	1.85	2.67

資料來源：行政院主計處，中華民國臺灣地區國民經濟動向統計季報

註：國內生產毛額除整體產業、政府服務生產者、對家庭服務之民間非營利機構生產者，以及家事服務生產者之生產毛額外，尚有進口稅、加值型營業稅，以及設算銀行服務費等三個其他項未列入本表。

Source: DGBAS, Executive Yuan, "Quarterly National Economic Trends, Taiwan Area, ROC".

Note: Import duties, Value added taxes and imputed bank services charge, are not shown in the table.



註：本圖型因未加上進口稅、加值型營業稅及減掉設算銀行服務費，所佔百分比與下表佔GDP百分比有些微差異。

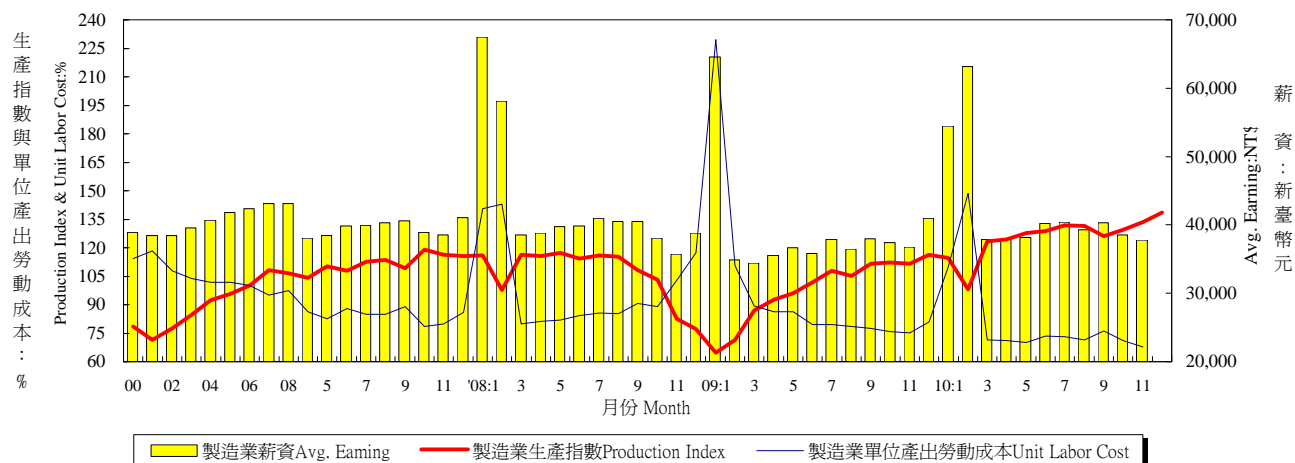
Note: Import duties, Value added taxes and imputed bank services charge are not included; therefore the percentage is different from the table.

年與季 Year & Quarter	產業 Sector															
	服務業 Services															
	合計 Sub-Total		運輸倉儲及通訊業 Transportation Storage & Communication		商業 Wholesale & Retail Trade Rest. & Hotel		金融保險 不動產 Finance Insurance Real Estate		公共行政及國防 Public Administration & National Defense		教育服務業 Educational Services		醫療保健及社會工作服務業 Medical Treatment & Social Work		其他產業 Other Services	
	佔GDP /GDP (%)	年增率 Annual Rate of Change (%)	佔GDP /GDP (%)	年增率 Annual Rate of Change (%)	佔GDP /GDP (%)	年增率 Annual Rate of Change (%)	佔GDP /GDP (%)	年增率 Annual Rate of Change (%)	佔GDP /GDP (%)	年增率 Annual Rate of Change (%)	佔GDP /GDP (%)	年增率 Annual Rate of Change (%)	佔GDP /GDP (%)	年增率 Annual Rate of Change (%)	佔GDP /GDP (%)	年增率 Annual Rate of Change (%)
2001	71.39	0.84	7.04	1.12	20.50	0.14	16.90	-2.75	8.46	0.70	4.89	4.83	3.39	1.97	9.59	6.68
2002	70.07	3.31	7.03	5.01	19.98	2.61	16.04	-0.09	8.02	-0.22	4.97	6.97	3.41	5.83	10.03	10.10
2003	69.09	2.22	6.95	2.56	19.60	1.69	15.90	2.80	8.12	4.86	5.02	4.77	3.31	0.78	9.78	1.10
2004	68.37	5.09	6.92	5.69	19.60	6.17	15.85	5.84	7.87	2.96	4.89	3.53	3.19	2.18	9.83	6.73
2005	67.87	3.94	6.76	2.33	19.87	6.15	15.80	4.34	7.69	2.31	4.75	1.59	2.99	-1.67	9.86	4.99
2006	67.06	4.17	6.61	3.12	19.79	5.00	15.82	5.58	7.43	1.89	4.68	3.86	2.84	-0.08	9.89	5.75
2007	66.29	4.77	6.50	4.09	19.75	5.76	15.78	5.70	7.04	0.40	4.53	2.65	2.81	4.92	10.00	7.13
2008	66.45	0.98	6.63	2.78	19.97	1.85	15.56	-0.64	7.23	3.49	4.53	0.72	2.87	2.98	9.96	0.36
2009	67.24	-0.76	6.76	0.03	20.10	-1.27	15.47	-2.50	7.41	0.54	4.74	2.55	3.06	4.36	9.99	-1.63
2008 4	68.20	-1.77	6.82	1.01	20.42	-6.16	15.58	-3.88	6.85	6.50	4.61	0.79	3.03	3.39	10.79	3.79
2009 1	72.12	-2.60	7.04	-2.68	21.81	-6.49	15.88	-7.22	9.47	-18.82	5.24	1.92	3.17	2.94	11.54	6.37
2009 2	67.90	-4.50	6.75	-2.57	20.03	-5.33	16.30	-5.83	7.17	4.95	4.48	2.54	3.15	4.06	9.62	-11.07
2009 3	65.22	0.61	6.76	0.26	18.84	0.37	15.16	0.09	7.23	4.10	4.93	2.49	3.02	5.42	9.07	-1.56
2009 4	64.55	3.39	6.55	4.86	19.92	6.54	14.71	3.11	6.10	-0.73	4.36	3.24	2.91	4.91	9.88	0.01
2010 1	66.84	5.27	6.65	7.39	20.57	7.11	15.00	7.26	8.55	-19.29	4.69	1.49	2.84	1.79	10.36	1.98
2010 2	63.47	5.49	6.45	7.93	19.13	7.76	15.05	4.22	6.60	7.90	4.05	1.85	2.91	4.30	9.02	5.79
2010 3	62.33	4.93	6.51	5.80	18.05	5.16	14.37	4.10	6.90	5.87	4.50	0.10	2.85	3.61	9.09	9.92



# 表三：生產概況

## Table 3. Industry Indicators



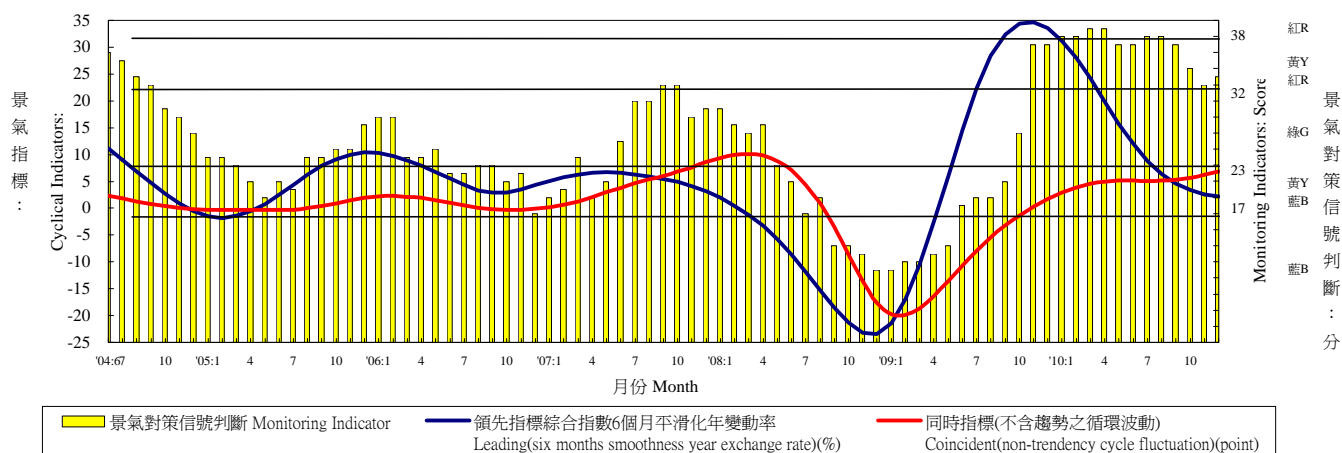
年與月 Year & Month	製造業生產 (基期95年=100) Mfg. Industrial Production (2006=100)		製造業重工業生產 (基期95年=100) Heavy Industry Production (2006=100)		製造業輕工業生產 (基期95年=100) Light Industry Production (2006=100)		製造業單位產出勞動成本 (基期95年=100) Unit labor cost in Manufacturing (2006=100)		製造業薪資 Average Earnings of Employees in Manufacturing	
	指數 Index (%)	年增率 Annual Rate of Change (%)	指數 Index (%)	年增率 Annual Rate of Change (%)	指數 Index (%)	年增率 Annual Rate of Change (%)	指數 Index (%)	年增率 Annual Rate of Change (%)	每人每月 (元) Wages per Month (NTS)	年增率 Annual Rate of Change (%)
2000	78.60	7.85	69.68	10.97	117.47	0.57	114.41	-2.36	38,914	3.12
2001	71.51	-9.02	63.55	-8.80	106.19	-9.60	118.44	3.52	38,412	-1.29
2002	77.60	8.52	71.51	12.53	104.26	-1.82	107.78	-9.00	38,435	0.06
2003	84.71	9.16	80.15	12.08	104.82	0.54	103.93	-3.57	39,549	2.90
2004	92.31	8.97	88.99	11.03	107.10	2.18	101.69	-2.16	40,657	2.80
2005	95.69	3.66	93.95	5.57	103.43	-3.43	101.83	0.14	41,858	2.95
2006	100.00	4.50	100.00	6.44	100.00	-3.32	100.00	-1.80	42,393	1.28
2007	108.34	8.34	110.28	10.28	99.67	-0.33	95.06	-4.94	43,169	1.83
2008	106.65	-1.56	109.46	-0.74	94.10	-5.58	97.31	2.61	43,105	-0.22
2009	97.39	-8.68	99.96	-8.68	85.94	-8.67	90.55	-6.95	39,152	-9.17
2010	138.49	19.01	145.76	21.10	106.15	7.70	--	--	--	--
2009 1	64.62	-44.22	62.84	-46.71	72.56	-31.93	229.54	63.36	64,585	-4.29
2009 2	71.57	-26.81	71.06	-30.53	73.87	-5.03	110.63	-22.56	34,930	-39.85
2009 3	86.85	-25.42	86.91	-27.61	86.55	-13.81	89.45	11.80	34,395	-10.77
2009 4	92.77	-19.67	94.19	-20.84	86.44	-13.46	86.21	5.99	35,512	-8.56
2009 5	95.93	-18.31	99.00	-18.55	82.24	-17.03	86.22	5.12	36,694	-7.60
2009 6	101.75	-10.90	105.09	-11.38	86.85	-8.27	79.42	-5.90	35,836	-10.02
2009 7	107.70	-7.25	111.40	-7.01	91.22	-8.49	79.48	-7.30	37,862	-7.68
2009 8	105.11	-8.73	109.11	-8.84	87.33	-8.02	78.62	-7.76	36,524	-9.74
2009 9	111.50	2.89	116.21	3.29	90.50	0.63	77.42	-14.46	38,015	-6.15
2009 10	112.18	8.86	117.00	11.27	90.70	-3.20	75.99	-14.62	37,399	-1.72
2009 11	111.45	34.88	116.39	41.10	89.45	7.40	75.31	-26.77	36,732	2.74
2009 12	116.37	50.68	120.36	61.47	98.56	10.46	80.79	-31.15	40,931	5.45
2010 1	114.60	77.34	119.26	89.78	93.85	29.34	109.84	-52.15	54,491	-15.63
2010 2	97.94	36.85	103.59	45.78	72.73	-1.54	148.63	34.35	63,142	80.77
2010 3	123.52	42.22	129.30	48.77	97.76	12.95	71.43	-20.15	37,873	10.11
2010 4	124.48	34.18	130.37	38.41	98.26	13.67	71.18	-17.43	37,883	6.68
2010 5	127.91	33.34	135.08	36.44	95.98	16.71	70.18	-18.60	38,125	3.90
2010 6	128.76	26.55	136.31	29.71	95.12	9.52	73.53	-7.42	40,188	12.14
2010 7	131.87	22.44	139.08	24.85	99.78	9.38	73.05	-8.09	40,367	6.62
2010 8	131.40	25.01	138.43	26.87	100.06	14.58	71.42	-9.16	39,261	7.49
2010 9	126.09	13.09	132.93	14.39	95.61	5.65	76.33	-1.41	40,277	5.95
2010 10	129.33	15.29	136.32	16.51	98.21	8.28	71.28	-6.20	38,547	3.07
2010 11	133.53	19.95	141.40	21.60	98.49	10.33	67.91	-9.83	37,813	2.94
2010 12	138.49	19.01	145.76	21.10	106.15	7.70	--	--	--	--
1-當月	125.66	28.03	132.32	31.27	96.00	11.17	82.25	-15.31	42,542.45	9.21

資料來源：經濟部統計處，臺灣地區工業生產統計月報，行政院主計處，臺灣地區薪資與生產力統計月報，人力資源統計月報。

Source : Department of Statistics, Ministry of Economic Affairs, "Industrial Production Statistics Monthly, Taiwan Area, ROC".

# 表四：景氣概況

## Table 4. Cyclical Indicators



年與月 Year & Month	景氣指標 Domestic business indicators		景氣對策信號判斷 (分) Indicators (Score)			製造業設備 利用率 Utility ratio of manufacturing Capacity (%)	製造業存貨率 Ratio of inventor in manufacturing (1996=100)	失業率 Un-employment rates (%)
	領先指標綜合指數6個月平滑化年變動率 Leading(six months smoothness year exchange rate)(%)	同時指標(不含趨勢之循環波動) Coincident(non-trendency cycle fluctuation)(point)	黃藍	YB	20			
1996	2.99	-2.9	黃藍	YB	20	78.25	72.84	2.60
1997	9.68	-0.7	綠	G	27	78.70	67.13	2.72
1998	-3.00	-1.4	黃藍	YB	20	78.84	71.27	2.69
1999	15.87	0.1	黃藍	YB	22	78.91	65.99	2.92
2000	2.46	7.7	綠	G	26	80.35	65.75	2.99
2001	-10.55	-5.1	藍	B	10	76.28	78.44	4.57
2002	13.06	-1.6	綠	G	23	77.02	69.89	5.17
2003	8.18	-1.3	綠	G	23	78.32	65.65	4.99
2004	9.65	1.8	黃紅	YR	33	80.08	62.59	4.44
2005	3.83	0.2	黃藍	YB	22	80.13	66.39	4.13
2006	5.85	0.9	黃藍	YB	22	80.29	63.65	3.91
2007	5.42	4.2	綠	G	25	80.42	62.33	3.91
2008	5.09	1.4	黃藍	YB	19	-	-	4.14
2009	12.92	-9.6	黃藍	YB	19	-	-	5.85
2010	13.24	5.1	黃紅	YR	37	-	-	5.21
2010 1	31.2	2.9	紅	R	38	-	-	5.68
2010 2	28.0	3.9	紅	R	38	-	-	5.76
2010 3	24.1	4.6	紅	R	39	-	-	5.67
2010 4	19.9	5.0	紅	R	39	-	-	5.39
2010 5	15.7	5.2	黃紅	YR	37	-	-	5.14
2010 6	12.0	5.2	黃紅	YR	37	-	-	5.16
2010 7	8.8	5.1	紅	R	38	-	-	5.20
2010 8	6.4	5.2	紅	R	38	-	-	5.17
2010 9	4.6	5.3	黃紅	YR	37	-	-	5.05
2010 10	3.4	5.6	黃紅	YR	34	-	-	4.92
2010 11	2.6	6.2	黃紅	YR	32	-	-	4.73
2010 12	2.2	6.8	黃紅	YR	33	-	-	4.67

資料來源：行政院經建會，台灣景氣指標，經濟部統計處，國內外經濟統計指標速報。

註：景氣指標與景氣對策信號之年平均數字，係依據當年12月份之數字。

Source : Council for Economic Planning & Development, ROC, "Business Indicators of Taiwan."

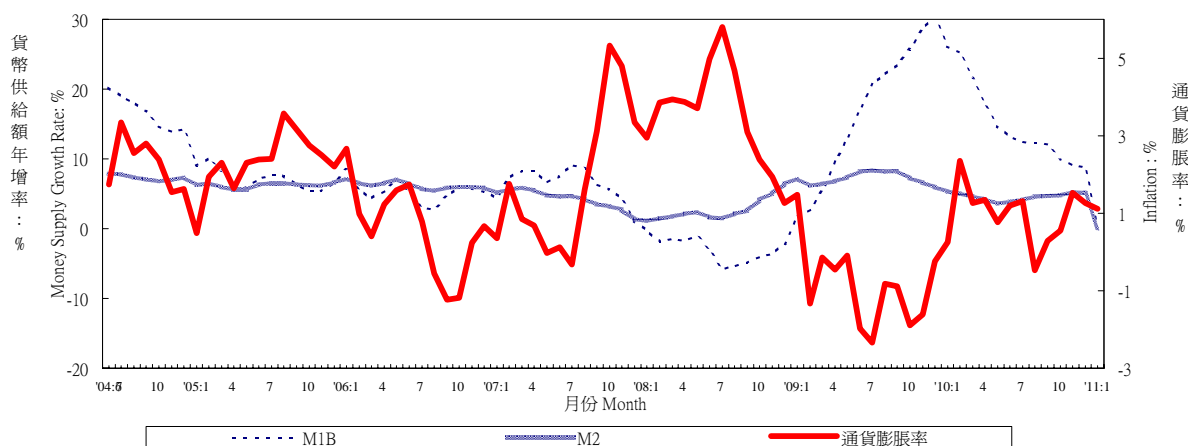
Dept. of Statistics, Ministry of Economic Affairs, "Domestic & Foreign Express Report of Economic Statistics Indicators".

Note : R:Red,overheating; G:Green,stable; B:Blue,recession; YR:between Y & R; YB:between Y & E

# 表五：物價與金融概況

## Table 5. Prices and Financial Situation

### 貨幣供給額與通貨膨脹率 Money Supply Growth Rate and Inflation

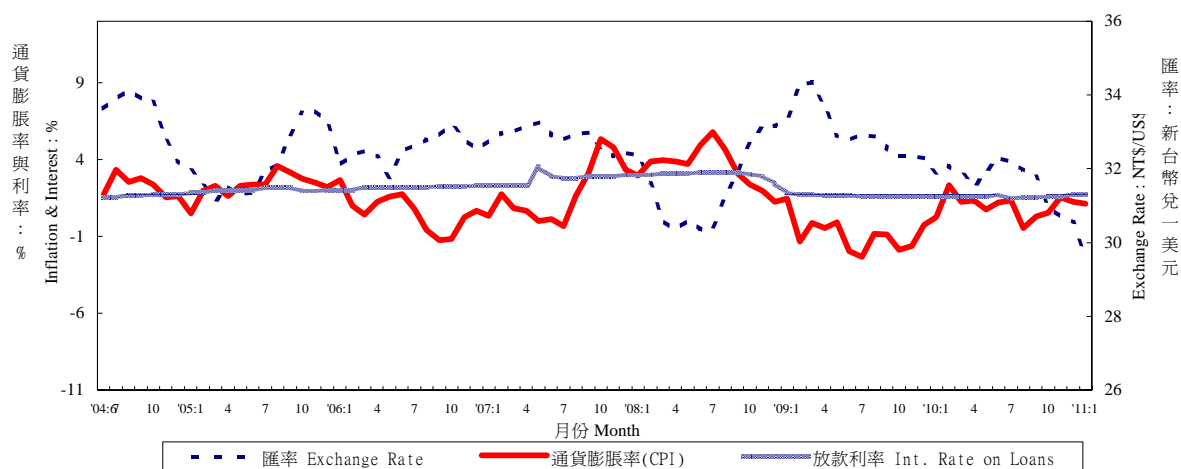


年與月 Year & Month	躉售物價 (基期90年=100) Wholesale Prices (2001=100)		消費者物價 (基期90年=100) Consumer Prices (2001=100)		貨幣供給額年增率 Money Supply (Annual Growth Rate)		
	指數 Index (%)	年增率 Annual Rate of Change (%)	指數 Index (%)	年增率 Annual Rate of Change (%)	M1A (%)	M1B (%)	M2 (%)
1999	99.55	-4.55	98.77	0.17	3.09	9.87	8.33
2000	101.36	1.82	100.01	1.26	7.36	10.58	7.04
2001	100.00	-1.34	100.00	-0.01	-4.69	-1.02	5.79
2002	85.78	-14.22	99.80	-0.20	8.59	17.01	3.55
2003	87.91	2.48	95.62	-4.19	11.28	11.82	3.77
2004	94.09	7.03	97.17	1.61	21.10	18.98	7.45
2005	94.67	0.61	99.41	2.31	7.65	7.10	6.22
2006	100.00	5.64	100.00	0.60	5.72	5.30	6.22
2007	106.47	6.47	101.80	1.80	6.80	6.44	4.25
2008	111.95	5.15	105.39	3.53	0.97	-2.94	2.67
2009	102.17	-8.73	104.47	-0.87	13.38	16.54	7.22
2010	107.75	5.46	105.48	0.96	14.49	14.93	4.59
2010 2	106.42	6.09	105.25	2.34	22.51	25.26	5.04
2010 3	107.01	6.87	104.25	1.26	18.28	21.57	4.58
2010 4	108.51	9.06	105.13	1.34	15.71	17.92	4.18
2010 5	108.90	9.43	104.97	0.76	15.92	14.67	3.54
2010 6	108.22	7.02	105.32	1.19	15.73	13.22	3.81
2010 7	107.80	5.32	105.65	1.31	15.11	12.49	4.12
2010 8	108.19	3.33	105.66	-0.47	12.92	12.29	4.60
2010 9	108.48	3.77	105.77	0.29	14.22	12.15	4.66
2010 10	107.78	3.69	106.46	0.56	11.19	10.04	4.80
2010 11	107.78	2.46	106.67	1.52	8.31	9.18	5.20
2010 12	107.95	2.24	105.88	1.25	8.35	8.76	5.14
2011 1	107.69	1.64	105.86	1.11	--	--	--
2011 1-1	107.69	1.64	105.86	1.11	--	--	--

資料來源：中央銀行經濟研究處，臺灣地區金融統計月報，臺灣證券交易所，證券統計資料月報。

Source : Economic Research Department, The Central Bank of China. Financial Statistics Monthly, Taiwan District ROC.

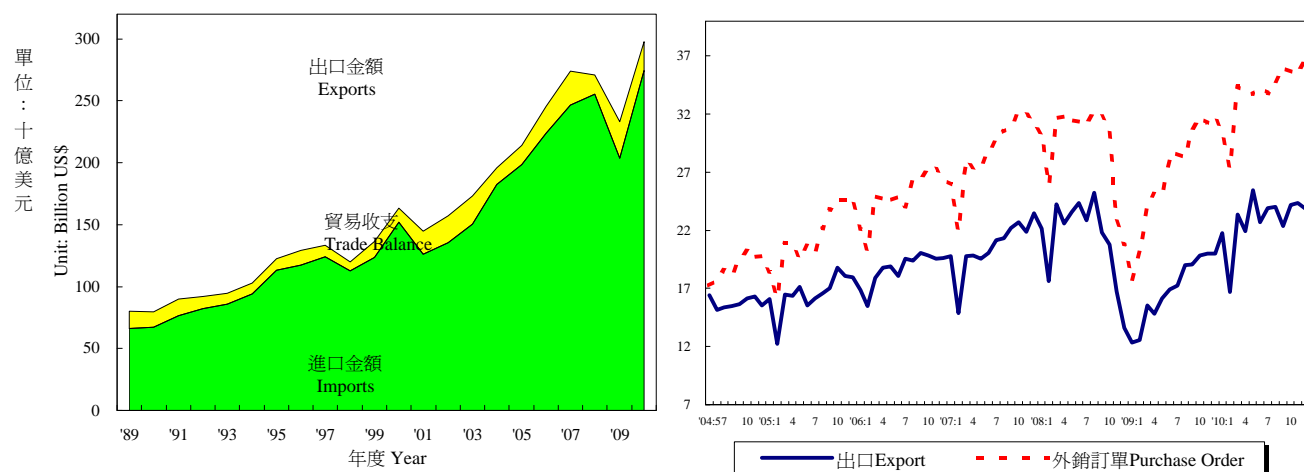
### 利率、通貨膨脹率與匯率 Interest Rate, Exchange Rate and Inflation



年與月 Year & Month	存款 加權平均利率 Weighted Average Interest Rates on Deposits (%)	基本放款利率 Short Term Loans (1 Year, Max) Interest Rate (%)	商業本票 初級市場 180天利率 Commercial Paper Primary Mkt.(180d) Interest Rate (%)	股票價格 Stock Prices		匯率 Exchange Rate		
				指數 Index (%)	年增率 Annual Rate of Change (%)	新臺幣 對一美元 NT\$ Against US\$	新臺幣 對一日元 NT\$ Against Yen	
1999	5.00	7.84	5.38	7,427	-4.02	32.27	0.2833	
2000	4.62	7.86	5.62	7,847	5.66	31.23	0.2897	
2001	4.09	7.78	4.17	4,907	-37.46	33.80	0.2781	
2002	1.83	7.46	2.75	5,247	6.91	34.58	0.2757	
2003	1.11	7.10	1.80	5,144	-1.96	34.42	0.2969	
2004	1.08	7.07	1.61	6,033	17.30	33.43	0.3089	
2005	1.34	7.32	2.00	6,090	0.94	32.18	0.2920	
2006	1.61	7.53	2.19	6,842	12.35	32.53	0.2797	
2007	1.90	7.93	2.74	8,489	24.08	32.84	0.2789	
2008	1.98	8.15	3.03	7,065	-16.78	31.53	0.3051	
2009	0.39	6.51	1.65	6,393	-9.51	33.06	0.3533	
2010	0.56	6.21	1.60	7,931	24.05	31.65	0.3605	
2010	2	0.47	6.16	1.60	7,432	66.22	32.09	0.3555
	3	0.47	6.16	1.60	7,775	57.84	31.88	0.3522
	4	0.47	6.17	1.60	8,052	40.67	31.52	0.3376
	5	0.47	6.17	1.60	7,526	14.26	31.96	0.3483
	6	0.58	6.17	1.70	7,383	13.66	32.31	0.3553
	7	0.58	6.23	1.46	7,639	11.77	32.17	0.3668
	8	0.58	6.23	1.54	7,884	15.17	31.95	0.3738
	9	0.58	6.23	1.54	8,040	9.81	31.78	0.3766
	10	0.67	6.26	1.59	8,210	8.19	30.96	0.3782
	11	0.67	6.26	1.59	8,350	9.70	30.71	0.3723
	12	0.67	6.26	1.75	8,777	12.00	30.55	0.3662
2011	1	--	6.29	1.75	8,971	10.77	29.61	0.3586
	2	--	--	--	--	--	--	--

# 表六：臺灣進出口貿易

## Table 6. Foreign Trade Values



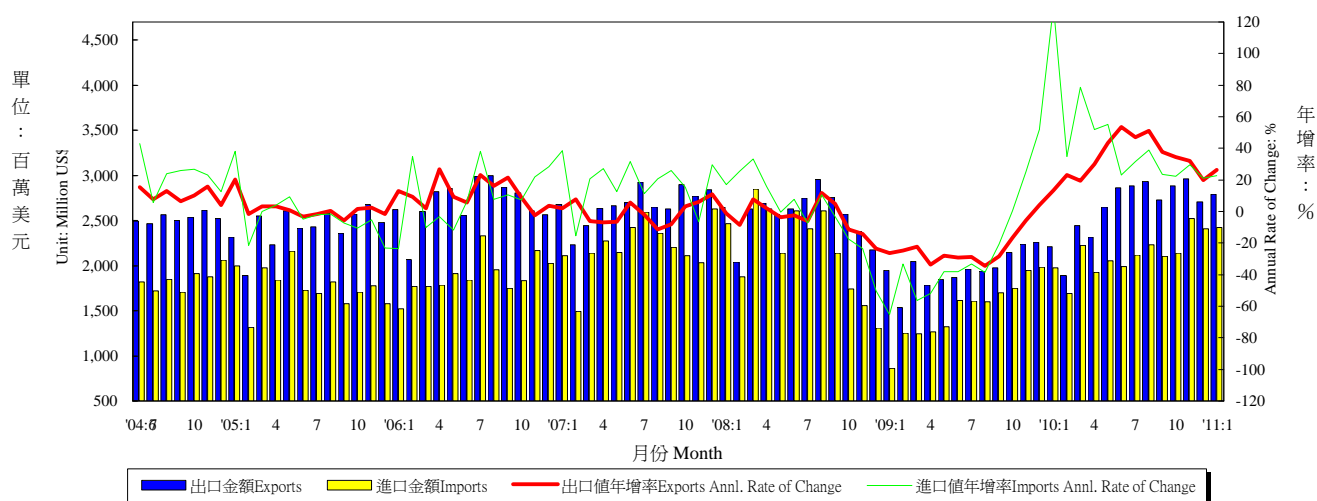
年與月 Year & Month	海關進出口貿易額 Export & Import Values of Foreign Trade					外銷訂單 Purchase Order for Exports	
	出口金額 (百萬美元) Amount (Mil. US\$)	年增率 Annual Rate of Change (%)	進口金額 (百萬美元) Amount (Mil. US\$)	年增率 Annual Rate of Change (%)	貿易收支 (百萬美元) Trade Balance	金額 (百萬美元) Amount (Mil. US\$)	年增率 Annual Rate of Change (%)
1999	123,733	9.89	111,196	5.67	12,537	127,474	7.26
2000	151,950	22.80	140,732	26.56	11,218	153,424	20.36
2001	126,314	-16.87	107,971	-23.28	18,344	135,714	-11.54
2002	135,317	7.13	113,245	4.89	22,072	150,952	11.23
2003	150,600	11.29	128,010	13.04	22,590	170,028	12.64
2004	182,370	21.10	168,758	31.83	13,613	215,087	26.50
2005	198,432	8.81	182,614	8.21	15,817	256,393	19.20
2006	224,017	12.89	202,698	11.00	21,319	299,313	16.74
2007	246,677	10.12	219,252	8.17	27,425	345,814	15.54
2008	255,629	3.63	240,448	9.67	15,181	351,723	1.71
2009	203,675	-20.32	174,371	-27.48	29,304	322,440	-8.33
2010	274,642	34.84	251,395	44.17	23,247	406,720	26.14
2010 2	16,689	32.59	15,799	45.79	891	27,410	36.25
3	23,358	50.08	21,835	80.08	1,523	34,387	43.66
4	21,929	47.74	19,390	52.69	2,539	33,960	35.15
5	25,475	57.53	22,386	72.12	3,089	33,729	34.03
6	22,716	34.07	21,176	39.43	1,540	34,221	22.48
7	23,899	38.45	21,750	42.71	2,149	33,829	18.23
8	24,046	26.58	21,795	27.99	2,251	34,879	23.30
9	22,398	17.47	20,629	24.98	1,769	35,980	16.68
10	24,189	21.90	21,201	27.86	2,987	35,646	12.26
11	24,373	21.79	23,960	33.78	414	35,742	14.34
12	23,832	19.05	22,225	21.36	1,607	36,568	15.27
2011 1	25,352	16.62	23,467	21.91	1,884	--	--
1-1	25,352	16.62	23,467	21.91	1,884	--	--

資料來源：財政部統計處，臺灣地區進出口貿易統計月報，經濟部統計處，臺灣地區外銷訂單統計速報。

Source : Department of Statistics, Ministry of Finance, "Primary Statistics of Export & Import

# 表七：臺灣對美國之進出口狀況

## Table 7. Trade with the United States



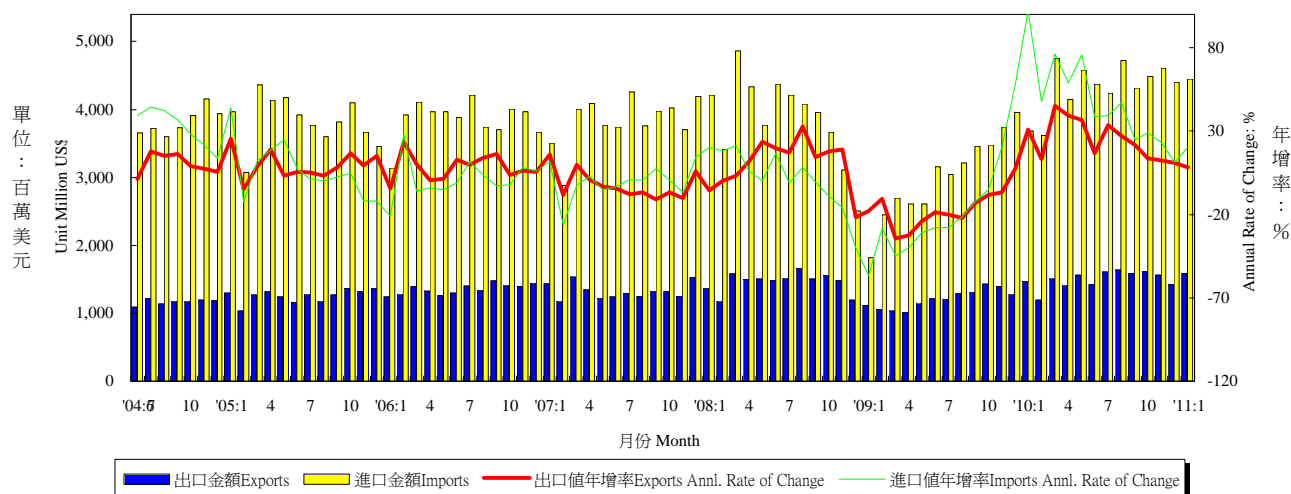
年與月 Year & Month	出口值 Exports			進口值 Imports			出入超 Trade Balance	貿易總額 Total Trade Amount	
	金額 (百萬美元) Amount (Mil. US\$)	年增率 Annual rate of change (%)	份額 Export share (%)	金額 (百萬美元) Amount (Mil. US\$)	年增率 Annual rate of change (%)	份額 Export share (%)	金額 (百萬美元) Amount (Mil. US\$)	金額 (百萬美元) Amount (Mil. US\$)	年增率 Annual rate of change (%)
1999	31,339	4.61	25.33	19,818	-0.14	17.82	11,521	50,595	1.59
2000	35,588	13.56	23.42	25,270	27.51	17.96	10,319	59,941	18.47
2001	28,136	-20.94	22.27	18,407	-27.16	17.05	9,728	45,884	-23.45
2002	27,365	-2.74	20.22	18,256	-0.82	16.12	9,110	45,621	-0.57
2003	26,554	-2.97	17.63	16,995	-6.90	13.28	9,558	43,549	-4.54
2004	28,751	8.27	15.77	21,780	28.16	12.91	6,971	50,531	16.03
2005	29,114	1.26	14.67	21,171	-2.80	11.59	7,943	50,285	-0.49
2006	32,361	11.15	14.45	22,664	7.06	11.18	9,696	55,025	9.43
2007	32,077	-0.88	13.00	26,508	16.96	12.09	5,569	58,585	6.47
2008	30,791	-4.01	12.05	26,327	-0.68	10.95	4,464	57,118	-2.51
2009	23,553	-23.51	11.56	18,154	-31.04	10.41	5,399	41,707	-26.98
2010	31,469	33.61	11.46	25,373	39.77	10.09	6,096	56,842	36.29
2010									
2	1,894	23.27	11.35	1,690	34.67	10.70	204	3,584	28.40
3	2,444	19.44	10.46	2,221	78.63	10.17	223	4,666	41.81
4	2,314	29.80	10.55	1,929	51.93	9.95	386	4,243	39.01
5	2,647	43.26	10.39	2,055	55.19	9.18	593	4,702	48.24
6	2,864	53.45	12.61	1,988	23.25	9.39	876	4,853	39.44
7	2,882	46.94	12.06	2,115	31.61	9.72	767	4,997	40.04
8	2,934	51.19	12.20	2,229	39.12	10.23	704	5,163	45.73
9	2,725	37.79	12.17	2,101	23.71	10.19	624	4,827	31.29
10	2,885	34.42	11.93	2,138	22.14	10.09	747	5,024	28.91
11	2,958	32.06	12.14	2,523	29.67	10.53	436	5,481	30.95
12	2,709	19.95	11.37	2,406	21.22	10.83	303	5,116	20.55
2011									
1	2,794	26.31	11.02	2,424	22.61	10.33	370	5,218	24.57
1-1	2,794	26.31	11.02	2,424	22.61	10.33	370	5,218	24.57

資料來源：財政部統計處，臺灣地區進出口貿易統計月報。

Source : Dept. of Statistics, Ministry of Finance, "Preliminary Statistics of Export & Import."

# 表八：臺灣對日本之進出口狀況

## Table 8. Trade with Japan



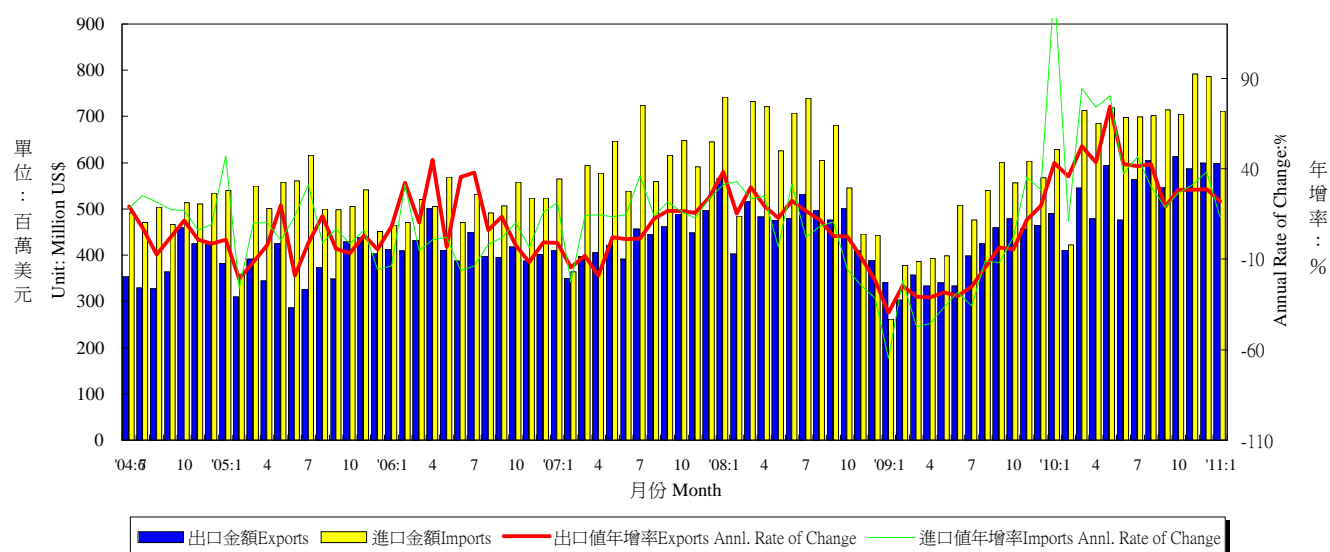
年與月 Year & Month	出口值 Exports			進口值 Imports			出入超 Trade Balance	貿易總額 Total Trade Amount	
	金額 (百萬美元) Amount (Mil. US\$)	年增率 Annual rate of change (%)	份額 Export share (%)	金額 (百萬美元) Amount (Mil. US\$)	年增率 Annual rate of change (%)	份額 Export share (%)	金額 (百萬美元) Amount (Mil. US\$)	金額 (百萬美元) Amount (Mil. US\$)	年增率 Annual rate of change (%)
1999	12,043	27.59	9.73	30,637	13.22	27.55	-18,594	42,680	16.94
2000	16,887	40.23	11.11	38,622	26.06	27.44	-21,735	55,509	30.06
2001	13,024	-22.87	10.31	25,933	-32.85	24.02	-12,909	38,958	-29.82
2002	12,368	-5.04	9.14	27,363	5.51	24.16	-14,995	39,731	1.99
2003	12,430	0.50	8.25	32,720	19.57	25.56	-20,290	45,149	13.64
2004	13,808	11.09	7.57	43,718	33.61	25.91	-29,910	57,526	27.41
2005	15,111	9.43	7.62	46,053	5.34	25.22	-30,943	61,164	6.32
2006	16,300	7.87	7.28	46,284	0.50	22.83	-29,984	62,585	2.32
2007	15,934	-2.25	6.46	45,937	-0.75	20.95	-30,003	61,870	-1.14
2008	17,556	10.18	6.87	46,508	1.24	19.34	-28,952	64,064	3.55
2009	14,502	-17.39	7.12	36,220	-22.12	20.77	-21,718	50,722	-20.83
2010	18,024	24.28	6.56	51,930	43.37	20.66	-33,907	69,954	37.92
2010 2	1,196	13.39	7.16	3,618	47.90	22.90	-2,423	4,814	37.50
2010 3	1,503	45.05	6.44	4,748	76.13	21.74	-3,245	6,251	67.50
2010 4	1,414	39.16	6.45	4,150	58.98	21.40	-2,736	5,564	53.43
2010 5	1,568	36.80	6.15	4,582	75.75	20.47	-3,015	6,150	63.86
2010 6	1,419	16.81	6.25	4,374	38.40	20.65	-2,954	5,793	32.40
2010 7	1,613	33.74	6.75	4,241	39.45	19.50	-2,627	5,854	37.83
2010 8	1,639	26.93	6.82	4,722	47.09	21.67	-3,083	6,361	41.30
2010 9	1,593	21.82	7.11	4,315	24.90	20.92	-2,722	5,908	24.06
2010 10	1,624	13.63	6.71	4,484	29.13	21.15	-2,860	6,109	24.61
2010 11	1,566	12.33	6.43	4,609	23.15	19.23	-3,043	6,175	20.21
2010 12	1,422	10.75	5.96	4,400	11.23	19.80	-2,978	5,821	11.11
2011 1	1,589	8.31	6.27	4,444	20.50	18.94	-2,855	6,032	17.03
2011 1-1	1,589	8.31	6.27	4,444	20.50	18.94	-2,855	6,032	17.03

資料來源：財政部統計處，臺灣地區進出口貿易統計月報。

Source : Dept. of Statistics, Ministry of Finance, "Preliminary Statistics of Export & Import."

# 表九：臺灣對德國之進出口狀況

## Table 9. Trade with Germany



年與月 Year & Month	出口值 Exports			進口值 Imports			出入超 Trade Balance	貿易總額 Total Trade Amount	
	金額 (百萬美元) Amount (Mil. US\$)	年增率 Annual rate of change (%)	份額 Export share (%)	金額 (百萬美元) Amount (Mil. US\$)	年增率 Annual rate of change (%)	份額 Export share (%)	金額 (百萬美元) Amount (Mil. US\$)	金額 (百萬美元) Amount (Mil. US\$)	年增率 Annual rate of change (%)
1999	4,099	-0.21	3.31	5,332	3.12	4.79	-1,233	9,430	1.65
2000	4,936	20.44	3.25	5,579	4.63	3.96	-643	10,515	11.50
2001	4,537	-8.10	3.59	4,274	-23.38	3.96	262	8,811	-16.21
2002	3,886	-14.33	2.87	4,448	4.07	3.93	-562	8,335	-5.40
2003	4,286	10.27	2.85	4,986	12.09	3.90	-701	9,272	11.24
2004	4,607	7.51	2.53	5,852	17.36	3.47	-1,245	10,459	12.81
2005	4,463	-3.13	2.25	6,180	5.61	3.38	-1,717	10,643	1.76
2006	5,007	12.19	2.24	6,135	-0.73	3.03	-1,128	11,142	4.69
2007	5,175	3.35	2.10	7,070	15.24	3.22	-1,895	12,245	9.90
2008	5,730	10.72	2.24	7,474	5.72	3.11	-1,745	13,204	7.83
2009	4,696	-18.04	2.31	5,673	-24.10	3.25	-977	10,369	-21.47
2010	6,512	38.67	2.37	8,264	45.67	3.29	-1,752	14,775	42.50
2010 2	412	35.70	2.47	422	11.43	2.67	-10	833	22.23
3	545	52.54	2.33	713	84.39	3.26	-168	1,258	69.09
4	478	43.45	2.18	685	73.95	3.53	-206	1,163	59.96
5	594	74.48	2.33	719	80.24	3.21	-125	1,313	77.59
6	476	42.55	2.09	698	37.31	3.29	-222	1,173	39.38
7	564	41.40	2.36	699	46.80	3.21	-136	1,263	44.34
8	605	42.38	2.52	702	30.10	3.22	-97	1,307	35.51
9	547	19.01	2.44	715	18.96	3.46	-168	1,262	18.98
10	614	28.18	2.54	704	26.51	3.32	-91	1,318	27.28
11	587	28.35	2.41	792	31.13	3.31	-205	1,379	29.93
12	600	28.78	2.52	786	38.37	3.54	-187	1,386	34.05
2011 1	598	21.93	2.36	712	13.24	3.03	-114	1,310	17.05
1-1	598	21.93	2.36	712	13.24	3.03	-114	1,310	17.05

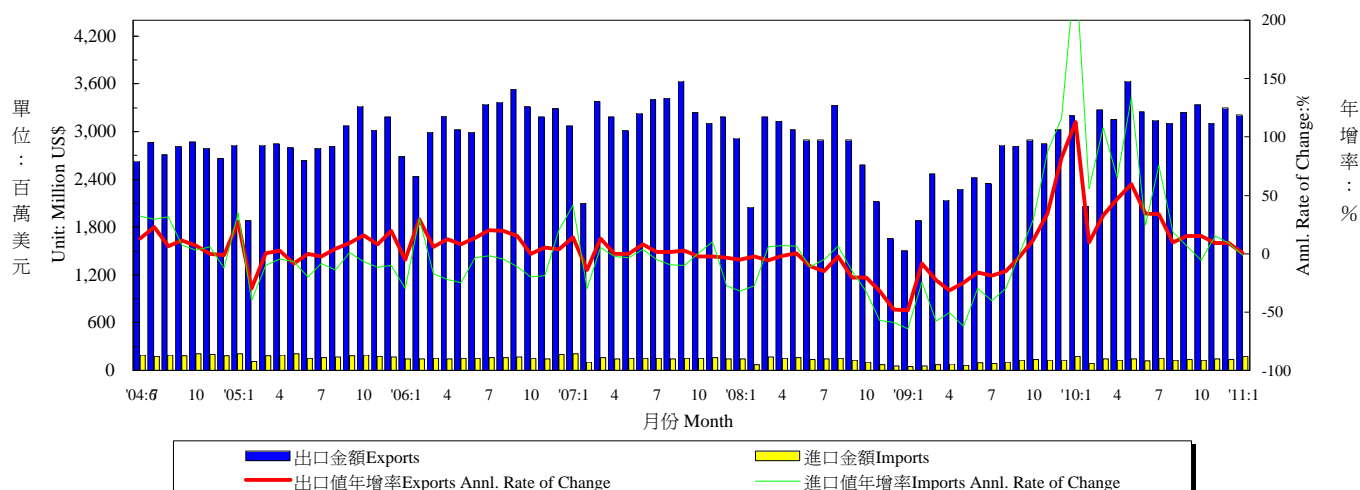
資料來源：財政部統計處，臺灣地區進出口貿易統計月報

Source : Dept. of Statistics, Ministry of Finance, "Preliminary Statistics of Export & Import."



# 表十：臺灣對香港之進出口狀況

## Table 10. Trade with Hong Kong

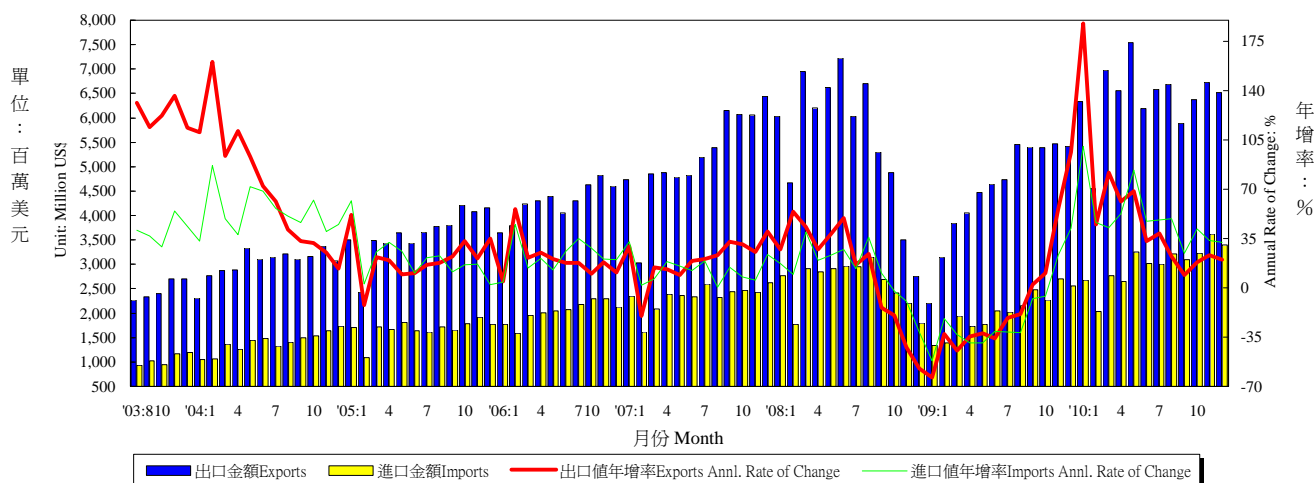


年與月 Year & Month	出口值 Exports			進口值 Imports			出入超 Trade Balance	貿易總額 Total Trade Amount	
	金額 (百萬美元) Amount (Mil. US\$)	年增率 Annual rate of change (%)	份額 Export share (%)	金額 (百萬美元) Amount (Mil. US\$)	年增率 Annual rate of change (%)	份額 Export share (%)	金額 (百萬美元) Amount (Mil. US\$)	金額 (百萬美元) Amount (Mil. US\$)	年增率 Annual rate of change (%)
1999	26,825	5.62	21.68	2,224	7.11	2.00	24,602	29,049	5.73
2000	32,742	22.06	21.55	2,364	6.32	1.68	30,378	35,106	20.85
2001	28,713	-12.31	22.73	2,052	-13.22	1.90	26,661	30,764	-12.37
2002	32,960	14.79	24.36	1,915	-6.66	1.69	31,045	34,875	13.36
2003	30,868	-6.35	20.50	1,917	0.12	1.50	28,951	32,785	-5.99
2004	32,896	6.57	18.04	2,309	20.44	1.37	30,587	35,205	7.38
2005	34,036	3.46	17.15	2,110	-8.64	1.16	31,926	36,145	2.67
2006	37,381	9.83	16.69	1,881	-10.86	0.93	35,501	39,262	8.62
2007	37,980	1.60	15.40	1,825	-2.96	0.83	36,155	39,805	1.38
2008	32,690	-13.93	12.79	1,493	-18.20	0.62	31,197	34,183	-14.12
2009	29,446	-9.92	14.46	1,123	-24.80	0.64	28,324	30,569	-10.57
2010	37,806	28.39	13.77	1,628	44.99	0.65	36,178	39,434	29.00
2010 1	3,200	112.99	14.72	177	247.58	0.92	3,023	3,377	117.41
2	2,059	9.63	12.34	86	55.59	0.55	1,973	2,145	10.95
3	3,276	32.51	14.03	148	107.62	0.68	3,128	3,424	34.62
4	3,150	46.99	14.36	127	65.27	0.66	3,023	3,277	47.63
5	3,640	59.74	14.29	143	133.58	0.64	3,497	3,783	61.67
6	3,252	34.42	14.32	120	24.34	0.57	3,132	3,372	34.03
7	3,147	34.06	13.17	150	75.39	0.69	2,998	3,297	35.51
8	3,104	9.75	12.91	126	18.48	0.58	2,979	3,230	10.07
9	3,239	15.19	14.46	136	6.52	0.66	3,104	3,375	14.81
10	3,335	15.21	13.79	128	-5.47	0.60	3,207	3,463	14.29
11	3,103	8.96	12.73	147	14.91	0.61	2,955	3,250	9.22
12	3,301	9.23	13.85	139	9.18	0.63	3,161	3,440	9.23
2011 1	3,209	0.29	12.66	175	-1.35	0.74	3,034	3,384	0.20
1-1	3,209	0.29	12.66	175	-1.35	0.74	3,034	3,384	0.20

資料來源：財政部統計處，臺灣地區進出口貿易統計月報。

Source : Dept. of Statistics, Ministry of Finance, "Preliminary Statistics of Export & Import."

表十一：兩岸經貿  
Table 11. Trade Across the Taiwan Straits



年與月 Year & Month	臺灣對大陸之進出口狀況 Trade With China						出入超金額百 萬美元 Net Export Amount (Mil.US\$)	匯率 人民幣兌 一美元 Exchange Rate (RMB/US\$)	大陸 消費者物價 總指數 年增率 China's Consumer Price Index
	出口值 Exports			進口值 Imports					
	金額 (百萬元) Amount (Mil. US\$)	年增率 Annual rate of change (%)	份額 Export share (%)	金額 (百萬元) Amount (Mil. US\$)	年增率 Annual rate of change (%)	份額 Export share (%)			
1998	915	46.03	0.81	4,114	5.07	3.91	-3,199	8.28	-0.77
1999	2,602	184.42	2.10	4,529	10.09	4.07	-1,927	8.28	-1.40
2000	4,391	68.77	2.89	6,229	37.55	4.43	-1,838	8.28	0.35
2001	4,895	11.47	3.88	5,903	-5.24	5.47	-1,008	8.28	0.73
2002	10,527	115.04	7.78	7,969	34.99	7.04	2,558	8.28	-1.48
2003	22,891	117.45	15.20	11,018	38.27	8.61	11,873	8.28	1.95
2004	36,349	58.79	19.93	16,792	52.41	9.95	19,557	8.28	2.70
2005	43,644	20.07	21.99	20,094	19.66	11.00	23,550	8.19	-2.01
2006	51,809	18.71	23.13	24,783	23.34	12.23	27,025	7.97	-0.34
2007	62,417	20.48	25.30	28,015	13.04	12.78	34,402	7.61	3.25
2008	66,884	7.16	26.16	31,391	12.05	13.06	35,492	6.95	1.08
2009	54,249	-18.89	26.63	24,423	-22.20	14.01	29,825	6.83	-6.22
2010	76,940	41.83	28.01	35,954	47.21	14.30	40,986	6.77	3.33
2009 1	2,203	-63.48	17.81	1,337	-51.61	14.96	866	6.84	1.00
2009 2	3,143	-32.61	24.97	1,387	-21.96	12.80	1,756	6.84	-1.60
2009 3	3,843	-44.72	24.69	1,943	-33.19	16.02	1,900	6.84	-1.20
2009 4	4,056	-34.62	27.32	1,735	-39.17	13.66	2,321	6.83	-1.50
2009 5	4,471	-32.44	27.65	1,771	-39.18	13.62	2,700	6.82	-1.40
2009 6	4,638	-35.83	27.37	2,053	-30.85	13.52	2,585	6.83	-1.70
2009 7	4,741	-21.49	27.47	2,024	-31.45	13.28	2,717	6.83	-1.80
2009 8	5,460	-18.56	28.74	2,154	-31.62	12.65	3,306	6.83	-1.20
2009 9	5,408	2.08	28.37	2,485	-7.78	15.05	2,924	6.83	-0.80
2009 10	5,393	10.49	27.18	2,270	-6.06	13.69	3,123	6.83	-0.50
2009 11	5,470	55.96	27.33	2,704	22.98	15.10	2,766	6.83	0.60
2009 12	5,423	96.53	27.09	2,562	42.36	13.99	2,861	6.83	1.90
2010 1	6,341	187.84	29.17	2,681	100.50	13.93	3,661	6.83	1.50
2010 2	4,556	44.93	27.30	2,028	46.23	12.84	2,528	6.83	2.70
2010 3	6,981	81.66	29.89	2,772	42.72	12.70	4,208	6.83	2.40
2010 4	6,553	61.56	29.88	2,647	52.55	13.65	3,906	6.83	2.80
2010 5	7,547	68.79	29.62	3,255	83.80	14.54	4,291	6.83	3.10
2010 6	6,186	33.38	27.23	3,023	47.26	14.27	3,163	6.82	2.90
2010 7	6,581	38.79	27.54	3,003	48.40	13.81	3,577	6.78	3.30
2010 8	6,685	22.45	27.80	3,215	49.27	14.75	3,470	6.79	3.50
2010 9	5,888	8.88	26.29	3,100	24.77	15.03	2,788	6.74	3.60
2010 10	6,376	18.23	26.36	3,221	41.90	15.19	3,155	6.67	4.40
2010 11	6,732	23.07	27.62	3,616	33.75	15.09	3,116	6.66	5.10
2010 12	6,515	20.14	27.34	3,392	32.41	15.26	3,123	6.65	4.60
2011 1	7,013	10.59	27.66	3,725	38.96	15.87	3,288	6.60	--
1-當月	7,013	10.59	27.66	3,725	38.96	15.87	3,288	6.60	--

資料來源：財政部統計處，臺灣地區進出口貿易統計月報。

Source : Dept. of Statistics, Ministry of Finance, "Preliminary Statistics of Export & Import."