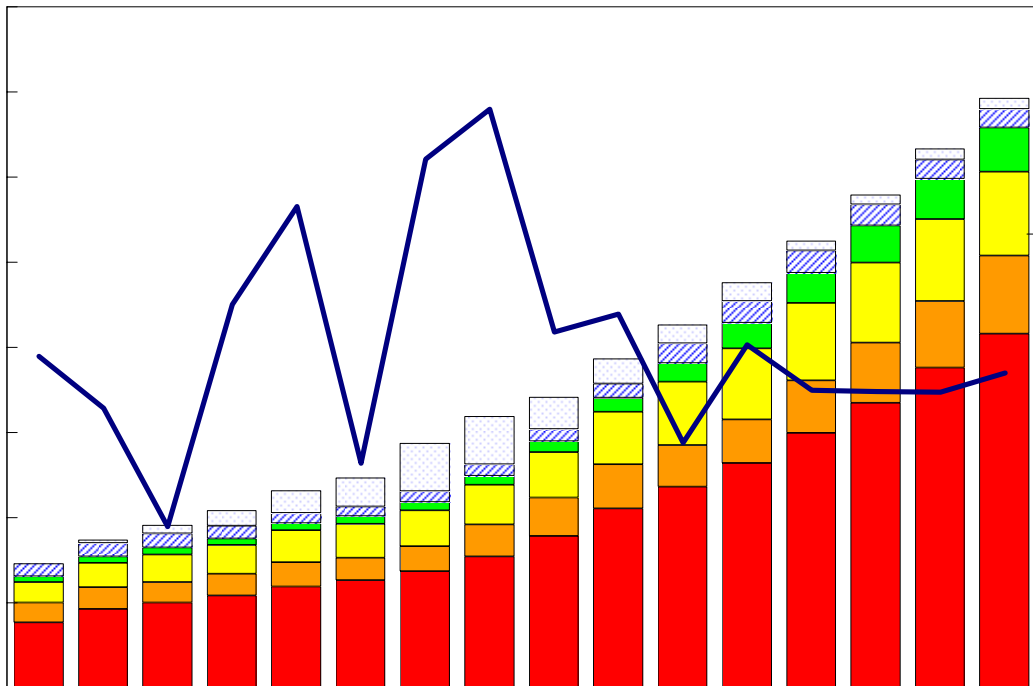


臺灣重要經濟變動指標

Major Economic Indicators for Taiwan



中華經濟研究院

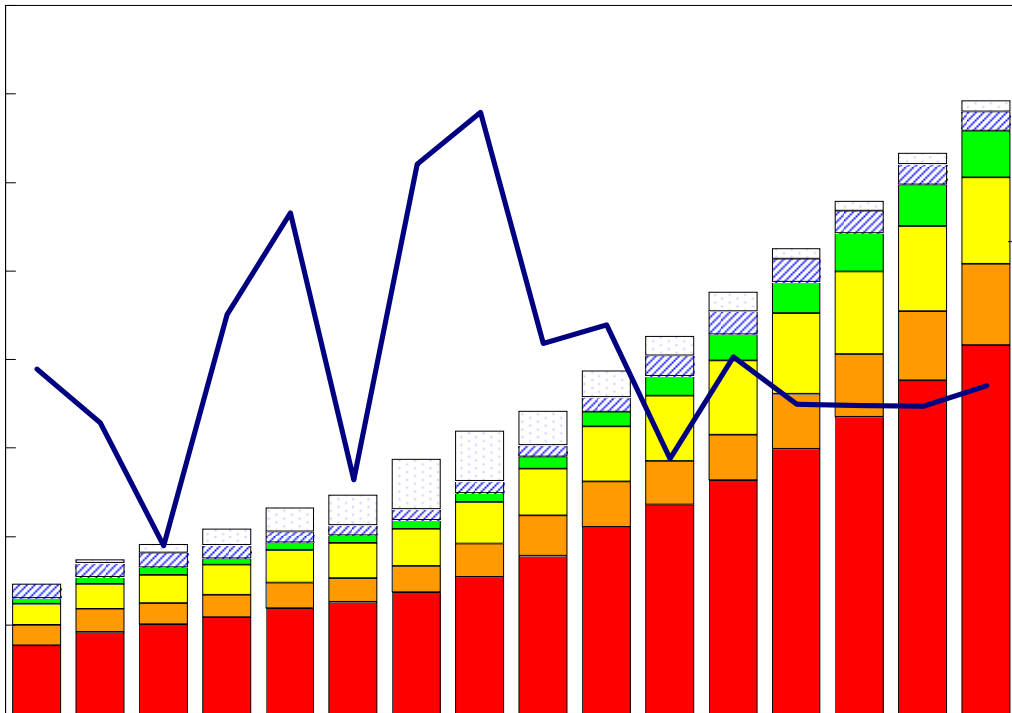
中華民國九十九年三月

Chung-Hua Institution for Economic Research

March 2010

臺灣重要經濟變動指標

Major Economic Indicators for Taiwan



經濟展望中心 編製

The Center for Economic Forecasting

目次

Index

臺灣經濟預測.....I	Taiwan's Macroeconomic Forecasts.....I
表一：主要總體經濟指標.....2-3	Table 1 : GDP Components by Expenditure.....2-3
表二：各業產值概況.....4-5	Table 2 : GDP Components by Industry.....4-5
表三：生產概況.....6	Table 3 : Industry Indicators.....6
表四：景氣概況.....7	Table 4 : Cyclical Indicators.....7
表五：物價與金融概況.....8-9	Table 5 : Prices and Financial Situation.....8-9
表六：臺灣進出口貿易.....10	Table 6 : Foreign Trade Values.....10
表七：臺灣對美國之進出口狀況.....11	Table 7 : Trade with the United States11
表八：臺灣對日本之進出口狀況.....12	Table 8 : Trade with Japan.....12
表九：臺灣對德國之進出口狀況.....13	Table 9 : Trade with Germany.....13
表十：臺灣對香港之進出口狀況.....14	Table 10 : Trade with Hong Kong14
表十一：兩岸經貿.....15	Table 11 : Trade across the Taiwan Straits.....15

臺灣經濟預測

Taiwan's Macroeconomic Forecasts

	2010年季預測				2008年	2009年	2010年
	Year 2009 Quarterly				Annually		
	第1季	第2季	第3季	第4季	實際值	預測值	預測值
	Q1	Q2	Q3	Q4	2008	2009	2010
GDP, GNP及其組成, 新臺幣十億元(2001年基期), GDP, GNP and Major Components, Billions of 2001 NT Dollars							
實質GDP, Real GDP	3,119.23	3,246.40	3,430.66	3,479.48	13,070.90	12,684.62	13,275.77
年變動率, yoy(%)	8.29	5.70	4.08	1.25	0.73	-2.96	4.66
實質GNP, Real GNP	3,252.57	3,324.99	3,748.73	3,556.37	13,370.81	13,067.19	13,612.66
年變動率, yoy(%)	8.11	5.15	3.23	0.84	0.50	-2.27	4.17
每人平均GNP, per capita GNP^[1]	4,517.96	4,412.10	4,572.79	5,010.59	18,025.30	17,028.15	18,513.45
年變動率, yoy(%)	13.15	9.20	6.99	6.13	2.01	-5.53	8.72
民間消費, Private Consumption	1,877.69	1,827.81	1,905.64	1,897.81	7,357.07	7,394.20	7,508.94
年變動率, yoy(%)	1.81	1.61	1.30	1.50	-0.57	0.50	1.55
固定資本形成, Total Fixed Investment	483.24	529.09	620.87	637.39	2,439.03	2,151.15	2,270.60
年變動率, yoy(%)	9.20	7.17	6.37	0.98	-11.17	-11.80	5.55
民間投資, Private Fixed Investment	366.38	386.02	460.27	418.07	1,880.20	1,503.39	1,630.74
年變動率, yoy(%)	11.48	10.51	8.38	4.32	-13.78	-20.04	8.47
財貨與服務之輸出, Exports, gds+serv	2,062.88	2,254.44	2,364.49	2,359.38	9,172.14	8,163.49	9,041.19
年變動率, yoy(%)	23.29	13.23	6.14	3.87	0.56	-11.00	10.75
財貨與服務之輸入, Imports, gds+serv	1673.62	1796.89	1873.65	1860.38	7559.29	6428.69	7204.53
年變動率, yoy(%)	27.39	13.54	7.26	4.19	-3.12	-14.96	12.07
其它總體經濟變數, Other Macroeconomic Variables							
海關出口(fob, 億美元), Merchandise Export(fob, US \$bn)*	494.47	566.79	616.18	650.01	2556.29	2032.3	2327.45
年變動率, yoy(%)	22.03	18.18	11.35	9.41	3.63	-20.5	14.52
海關進口(cif, 億美元), Merchandise Import (cif, US \$bn)*	407.86	483.6	541.32	577.72	2404.48	1742.29	2010.49
年變動率, yoy(%)	27.25	18.18	10.91	10.14	9.67	-27.54	15.39
GDP平減指數, GDP Deflator (2001=100)	102.41	97.02	95.83	101.64	97.19	98.72	99.23
年變動率, yoy(%)	-1.16	-0.09	0.41	2.94	-2.39	1.57	0.51
躉售物價指數, Wholesale Price Index (2006=100)	102.85	104.13	107.50	106.45	111.95	101.90	105.23
年變動率, yoy(%)	2.97	4.08	3.50	2.53	5.15	-8.97	3.27
消費者物價指數, Consumer Price Index (2006=100)	103.67	105.24	106.86	106.77	105.39	104.51	105.64
年變動率, yoy(%)	0.26	1.19	1.48	1.36	3.53	-0.83	1.07
M2貨幣存量(日平均), Money Stock (M2)	30,017.95	30,332.75	30,431.59	31,734.50	26,820.14	28,846.09	30,629.20
年變動率, yoy(%)	6.30	5.54	5.49	7.37	2.67	7.55	6.18
臺幣兌美元匯率, Exchange Rate(NT\$/US\$)	32.00	31.75	31.63	31.26	31.53	33.00	31.66
年變動率, yoy(%) ^[3]	5.83	4.16	3.56	2.62	3.98	-4.65	4.07
商業本票利率, 31-90 day Commercial Paper Rate	0.82	0.87	0.93	0.98	1.92	0.32	0.90
年變動率, yoy(%)	155.02	420.24	348.56	67.61	0.96	-83.36	181.01
失業率(%), Unemployment Rate(%)	5.81	5.76	5.91	5.74	4.14	5.86	5.80

資料來源: 中華經濟研究院, 經濟展望中心, 2009年12月15日。

Source: CEF, CIER, Dec. 15, 2009.

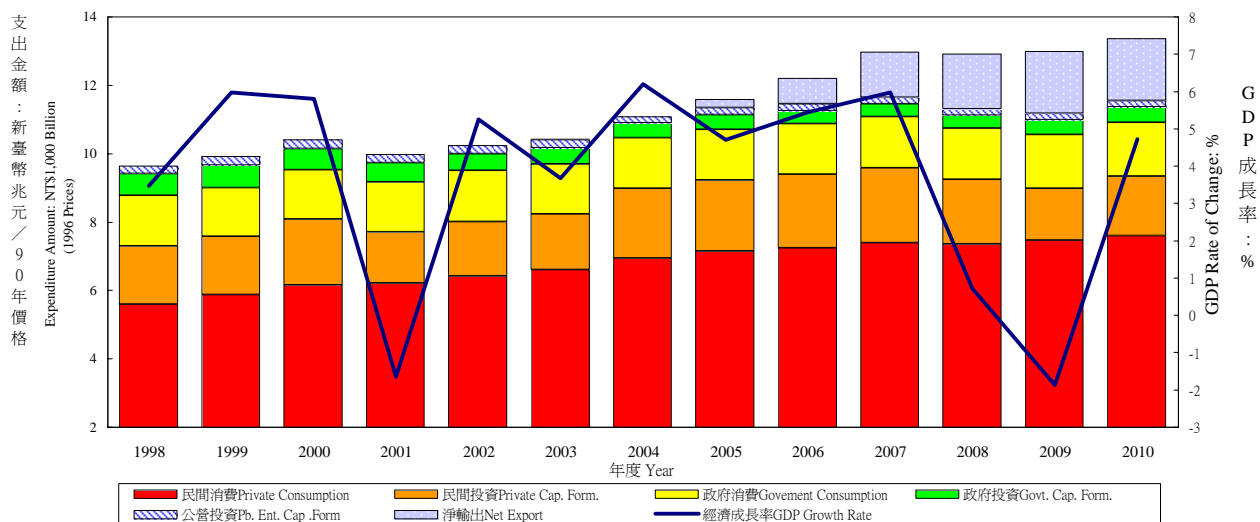
說明: *有關每人平均GNP在此以美元表示。

**有關匯率變動百分比, 正值表示升值, 負數表示貶值比率。

表一：主要總體經濟指標

Table 1. GDP Components by Expenditure

實質GDP各需求支出及成長率 Real GDP Expenditure & Growth Rate



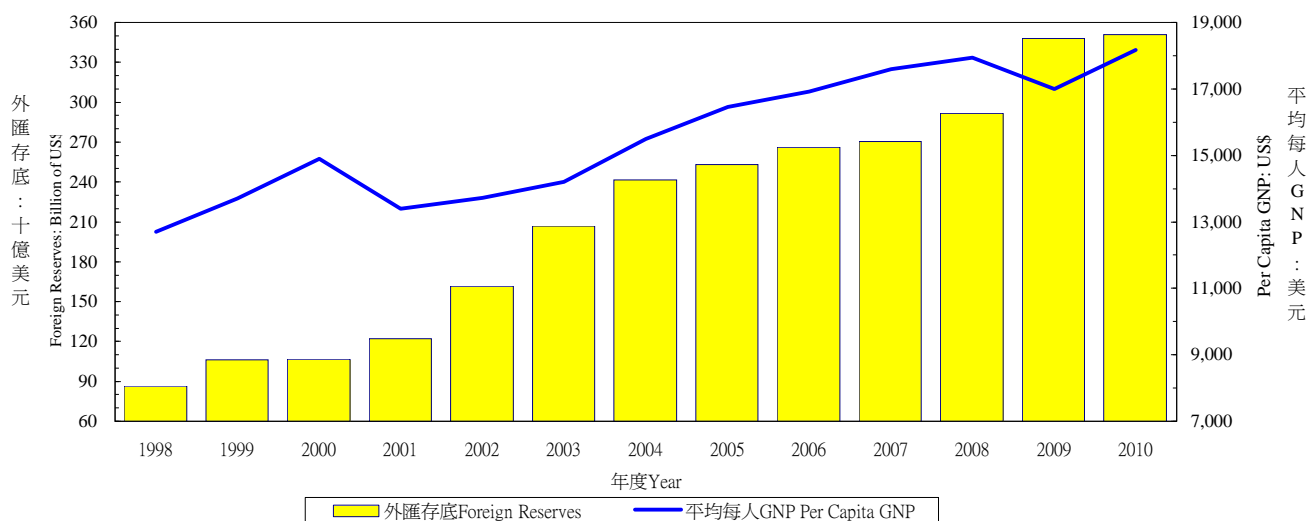
年與季 Year & Quarter	GDP 經濟 成長率 Economic Growth Rate (%)	名目GDP (新台幣 十億元) GDP (Bil.NT\$)	民間消費 Private Consumption Expenditure		民間固定投資 Private Spe. Gross Fixed Cap. Formation		商品及勞務輸出 Exports of Goods and Services		商品及勞務輸入 Imports of Goods and Services		政府消費 Government Consumption Expenditure	
			佔 GDP /GDP (%)	年增率 Annual Rate of Change (%)	佔 GDP /GDP (%)	年增率 Annual Rate of Change (%)	佔 GDP /GDP (%)	年增率 Annual Rate of Change (%)	佔 GDP /GDP (%)	年增率 Annual Rate of Change (%)	佔 GDP /GDP (%)	年增率 Annual Rate of Change (%)
1998	3.47	9,204	58.14	6.31	17.16	11.54	47.37	1.88	46.33	7.36	14.82	3.61
1999	5.97	9,649	58.72	5.07	16.45	-0.15	47.28	12.27	44.77	4.13	13.80	-3.94
2000	5.80	10,187	58.78	4.75	17.66	13.19	52.93	18.31	50.76	15.34	13.38	1.21
2001	-1.65	9,930	60.70	0.98	13.64	-22.98	49.97	-8.60	44.52	-14.75	14.01	1.86
2002	5.26	10,412	59.91	3.26	13.81	7.12	52.22	11.37	45.03	6.21	13.57	1.55
2003	3.67	10,696	59.82	2.91	14.06	1.93	55.49	10.23	48.47	7.68	13.24	-1.23
2004	6.19	11,365	59.91	5.17	17.71	25.62	61.42	15.40	57.74	17.50	12.71	0.57
2005	4.70	11,740	60.40	2.90	17.21	1.53	62.53	7.78	58.12	3.16	12.46	0.19
2006	5.44	12,243	59.20	1.49	17.57	3.31	68.00	11.41	61.88	4.57	12.00	-0.71
2007	5.98	12,911	58.14	2.08	17.37	1.36	72.07	9.55	64.11	2.98	11.78	2.09
2008	0.73	12,699	60.06	-0.57	16.00	-13.78	72.66	0.56	67.71	-3.12	12.32	0.68
2009	-1.87	12,527	60.82	1.48	12.78	-19.38	62.51	-9.21	53.41	-13.73	12.83	3.63
2010	4.72	13,115	59.70	1.81	14.16	14.81	69.69	13.84	62.17	17.66	12.43	0.17
2008 4	-7.11	3,206	59.19	-2.18	12.70	-29.49	60.88	-17.93	54.34	-17.94	13.04	0.49
2009 1	-9.06	2,985	62.80	-1.96	11.79	-35.53	53.42	-26.87	43.42	-33.20	14.32	5.03
2	-6.85	2,983	61.56	-0.61	12.07	-30.75	61.92	-17.24	52.70	-19.25	11.90	2.91
3	-0.98	3,160	60.85	2.31	14.44	-12.02	67.15	-8.41	58.81	-12.27	12.57	3.64
4	9.22	3,401	58.41	6.27	12.74	8.16	66.70	19.06	57.78	14.53	12.58	3.16
2010 1	9.24	3,190	61.22	3.02	13.66	25.47	68.48	34.72	61.22	43.39	13.21	-2.42
2	6.05	3,158	60.14	2.42	14.13	21.11	71.64	17.89	64.23	21.67	11.52	0.21
3	3.95	3,307	59.46	1.71	15.10	7.52	70.24	7.06	62.87	9.15	12.09	0.58
4	0.66	3,461	58.14	0.21	13.76	8.52	68.52	2.39	60.52	4.19	12.86	1.77

資料來源：行政院主計處，中華民國臺灣地區國民經濟動向統計季報，中央銀行經濟研究處，臺灣地區金融統計月報。

註：以上所列為政府發佈資料，本院對GDP的預測列於本刊第一部份臺灣總體經濟預測。

Source: DGBAS, Executive Yuan, "Quarterly National Economic Trends, Taiwan Area, ROC
The Central Bank of China, Financial Statistics, Taiwan District, The Republic of China

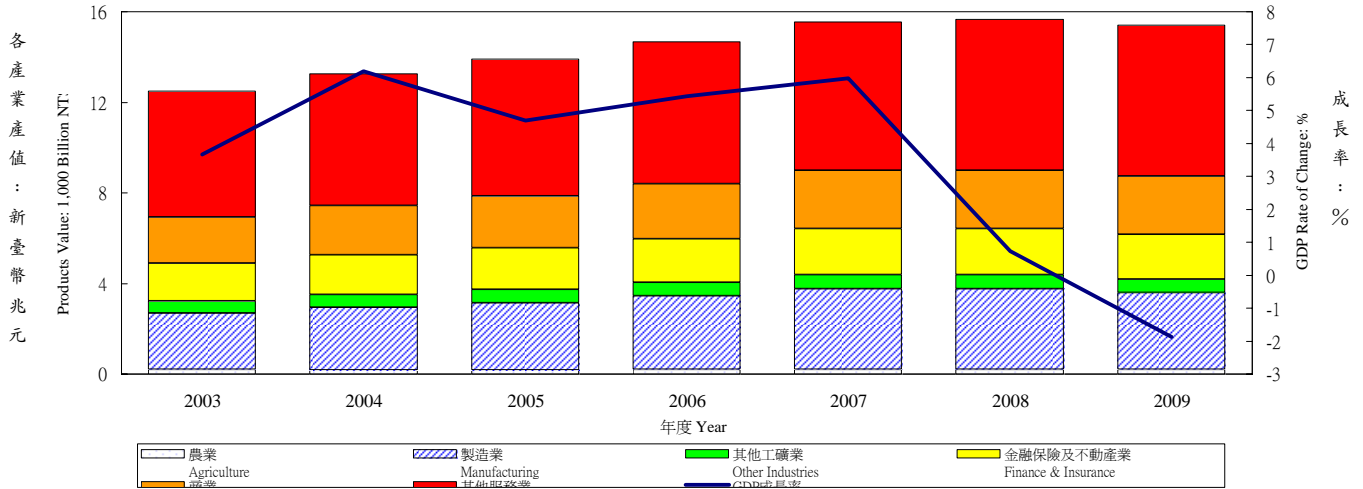
外匯存底及平均每人GNP Total Foreign Reserves & Per Capita GNP



年與季 Year & Quarter	公營事業固定投資 Public Enter. Gross Fixed Capita Formation		政府固定投資 Government Gross Fixed Capita Formation		存貨增加 Increase in Stocks		國外要素淨收入 Net Factor Income From Abroad		平均每人 GNP (美元) Per Capita GNP (US\$)	外匯存底 (十億美元) Total Foreign Reserves (Billion of US\$)
	佔 GDP /GDP (%)	年增率 Annual Rate of Change (%)	佔 GDP /GDP (%)	年增率 Annual Rate of Change (%)	佔 GDP /GDP (%)	新台幣 百萬 (1996年價格) NT Mil (1996=100)	佔 GDP /GDP (%)	年增率 Annual Rate of Change (%)		
1998	2.43	3.72	5.43	-1.67	0.98	114,666	0.74	-24.87	12,692	86.6
1999	2.57	13.86	5.35	3.26	0.59	74,486	0.94	31.71	13,712	106.2
2000	2.32	-3.33	4.80	-4.17	0.90	107,491	1.37	52.36	14,906	106.7
2001	2.40	-0.06	4.44	-9.22	-0.64	-80,627	1.93	37.75	13,401	122.2
2002	2.21	-2.58	3.74	-13.18	-0.42	-59,812	2.33	26.51	13,716	161.7
2003	2.09	-4.70	3.65	-4.47	0.12	12,679	3.07	35.96	14,197	206.6
2004	1.63	-20.60	3.47	-9.59	0.88	104,189	3.27	11.46	15,503	241.7
2005	1.78	14.77	3.46	2.82	0.28	34,223	2.48	-23.31	16,449	253.3
2006	1.59	-8.61	3.14	-11.21	0.38	46,283	2.55	6.28	16,911	266.1
2007	1.57	1.57	3.07	-4.46	0.11	12,867	2.58	5.12	17,596	270.3
2008	1.64	-2.38	3.51	-0.39	1.52	151,821	2.48	-8.47	17,941	291.7
2009	1.78	4.03	3.97	18.77	-1.28	-161,156	3.38	35.12	16,997	348.2
2010	1.74	1.73	3.91	1.70	0.54	70,159	2.92	-10.74	18,175	350.7
2008 4	2.24	-6.53	4.49	3.91	1.80	44,808	1.56	-34.79	4,284	291.7
2009 1	1.23	-28.33	3.17	13.72	-3.31	-105,376	4.44	-17.90	3,980	300.1
2009 2	1.58	5.77	3.86	22.42	-0.19	-5,945	3.17	90.99	4,027	317.6
2009 3	1.60	7.91	4.08	25.83	-1.86	-53,456	2.17	30.97	4,264	332.2
2009 4	2.61	23.00	4.65	14.05	0.08	3,621	3.77	158.84	4,726	348.2
2010 1	1.35	19.72	2.88	-1.92	0.42	13,761	4.84	15.04	4,516	350.7
2010 2	1.53	0.04	3.84	3.03	1.43	45,399	2.81	-7.49	4,371	--
2010 3	1.59	2.38	4.11	3.54	0.28	8,106	1.61	-22.60	4,520	--
2010 4	2.45	-5.05	4.72	1.35	0.07	2,893	2.49	-33.96	4,768	--

表二：各業產值概況

Table 2. GDP Components by Industry GDP各產業產值及成長率 GDP Products Value & Growth Rate



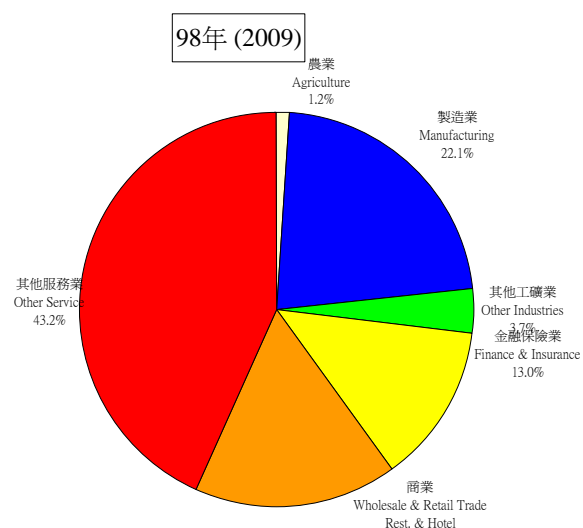
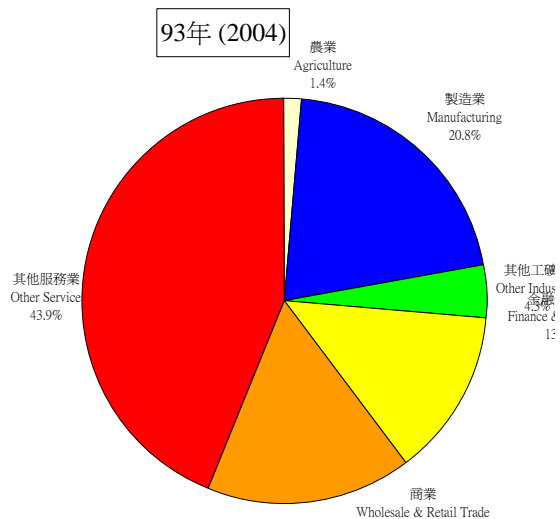
年與季 Year & Quarter	國內 生產毛額 GDP (新臺幣 十億元) 按90年價格 計算GDP (Bil. NT\$)	GDP 成長率 GDP Rate of Change (%)	產業 Sector											
			農業 Agriculture Hunting Forestry & Fishing		合計 Sub Total		礦業 Mining & Quarring		製造業 Manufacturing		營造業 Construction		水電燃氣業 Electricity, Gas & Water	
			估GDP /GDP (%)	年增率 Annual Rate of Change (%)	估GDP /GDP (%)	年增率 Annual Rate of Change (%)	估GDP /GDP (%)	年增率 Annual Rate of Change (%)	估GDP /GDP (%)	年增率 Annual Rate of Change (%)	估GDP /GDP (%)	年增率 Annual Rate of Change (%)	估GDP /GDP (%)	年增率 Annual Rate of Change (%)
			估GDP /GDP (%)	年增率 Annual Rate of Change (%)	估GDP /GDP (%)	年增率 Annual Rate of Change (%)	估GDP /GDP (%)	年增率 Annual Rate of Change (%)	估GDP /GDP (%)	年增率 Annual Rate of Change (%)	估GDP /GDP (%)	年增率 Annual Rate of Change (%)	估GDP /GDP (%)	年增率 Annual Rate of Change (%)
2001	9,571	-1.65	1.91	-1.95	28.46	-7.51	0.38	-10.24	23.42	-7.44	2.63	-12.58	2.03	-0.35
2002	10,074	5.26	1.93	6.54	28.00	3.54	0.67	85.46	22.50	1.14	3.08	23.05	1.75	-9.32
2003	10,444	3.67	1.83	-1.65	29.08	7.67	0.52	-19.28	23.89	10.09	2.85	-3.91	1.81	7.27
2004	11,090	6.19	1.63	-5.39	30.00	9.54	0.48	-1.37	24.82	10.33	2.88	7.13	1.81	6.16
2005	11,612	4.70	1.49	-4.24	30.63	6.93	0.44	-5.42	25.58	7.90	2.78	1.26	1.83	5.88
2006	12,243	5.44	1.61	13.84	31.33	7.84	0.32	-22.32	26.46	9.04	2.72	2.91	1.84	5.71
2007	12,976	5.98	1.49	-2.42	32.23	9.02	0.37	20.39	27.41	9.82	2.60	1.53	1.85	6.57
2008	13,071	0.73	1.48	0.55	31.94	-0.17	0.31	-13.80	27.33	0.43	2.44	-5.55	1.86	1.19
2009	12,827	-1.87	1.46	-3.08	31.05	-4.61	0.28	-12.03	26.56	-4.64	2.32	-6.69	1.89	-0.28
2008 1	3,168	6.88	1.36	-1.68	30.72	14.17	0.36	-4.73	26.06	16.93	2.53	-1.15	1.77	5.11
2008 2	3,297	5.38	1.60	-0.04	32.34	9.12	0.32	-0.32	27.72	11.00	2.52	-5.14	1.78	5.53
2008 3	3,339	-0.80	1.27	-4.37	34.59	0.90	0.30	-25.33	29.72	2.29	2.62	-7.03	1.95	-2.89
2008 4	3,267	-7.11	1.70	7.27	30.00	-18.82	0.28	-22.37	25.73	-20.52	2.09	-8.91	1.91	-1.59
2009 1	2,881	-9.06	1.45	-3.07	26.69	-21.01	0.31	-22.38	22.18	-22.62	2.38	-14.27	1.82	-6.63
2009 2	3,071	-6.85	1.69	-1.75	29.46	-15.15	0.32	-7.95	24.86	-16.45	2.47	-8.50	1.81	-5.51
2009 3	3,307	-0.98	1.20	-6.81	33.43	-4.31	0.24	-20.43	28.60	-4.71	2.53	-4.40	2.06	4.38
2009 4	3,568	9.22	1.53	-1.52	33.72	22.76	0.27	5.43	29.67	25.96	1.94	1.46	1.85	5.47

資料來源：行政院主計處，中華民國臺灣地區國民經濟動向統計季報

註：國內生產毛額除整體產業、政府服務生產者、對家庭服務之民間非營利機構生產者，以及家事服務生產者之生產毛額外，尚有進口稅、加值型營業稅，以及設算銀行服務費等三個其他項未列入本表。

Source : DGBAS, Executive Yuan, "Quarterly National Economic Trends, Taiwan Area, ROC".

Note : Import duties, Value added taxes and imputed bank services charge, are not shown in the table.

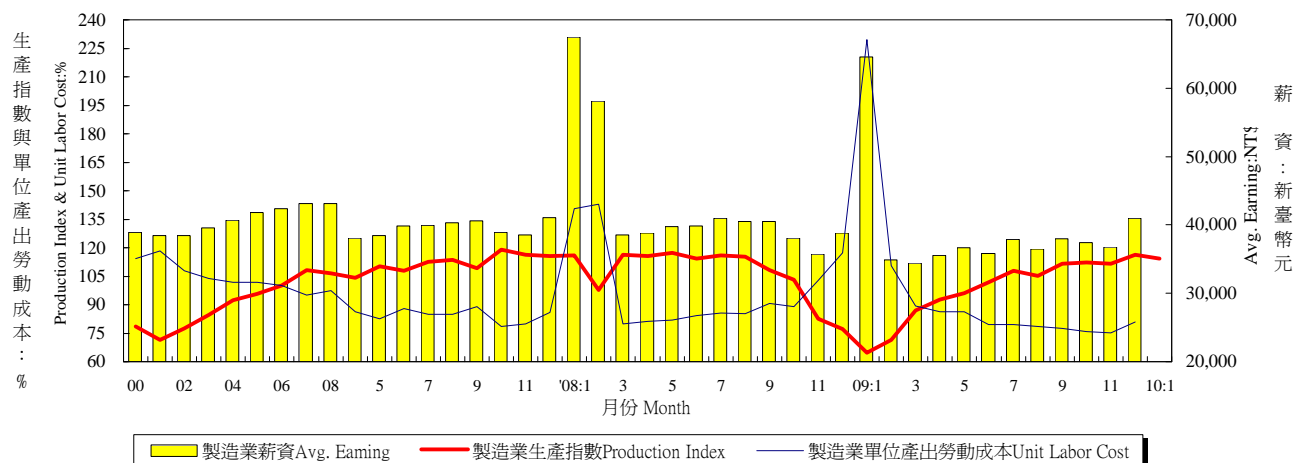


註：本圖型因未加上進口稅、加值型營業稅及減掉設算銀行服務費，所佔百分比與下表佔GDP百分比有些微差異。

Note: Import duties, Value added taxes and imputed bank services charge are not included; therefore the percentage is different from the table.

年與季 Year & Quarter	產業 Sector															
	服務業 Services															
	合計 Sub-Total		運輸倉儲及通訊業 Transportation Storage & Communication		商業 Wholesale & Retail Trade Rest. & Hotel		金融保險 不動產 Finance Insurance Real Estate		公共行政及國防 Public Administration & National Defense		教育服務業 Educational Services		醫療保健及社會工作服務業 Medical Treatment & Social Work		其他產業 Other Services	
	佔GDP /GDP (%)	年增率 Annual Rate of Change (%)	佔GDP /GDP (%)	年增率 Annual Rate of Change (%)	佔GDP /GDP (%)	年增率 Annual Rate of Change (%)	佔GDP /GDP (%)	年增率 Annual Rate of Change (%)	佔GDP /GDP (%)	年增率 Annual Rate of Change (%)	佔GDP /GDP (%)	年增率 Annual Rate of Change (%)	佔GDP /GDP (%)	年增率 Annual Rate of Change (%)	佔GDP /GDP (%)	年增率 Annual Rate of Change (%)
2003	69.09	2.22	6.95	2.56	19.60	1.69	15.90	2.80	8.51	2.45	5.02	4.77	3.31	0.78	9.78	1.10
2004	68.37	5.09	6.92	5.69	19.60	6.17	15.85	5.84	8.08	0.84	4.89	3.53	3.19	2.18	9.83	6.73
2005	67.87	3.94	6.76	2.33	19.87	6.15	15.80	4.34	7.84	1.54	4.75	1.59	2.99	-1.67	9.86	4.99
2006	67.06	4.17	6.61	3.12	19.79	5.00	15.82	5.58	7.43	-0.06	4.68	3.86	2.84	-0.08	9.89	5.75
2007	66.29	4.77	6.50	4.09	19.75	5.76	15.78	5.70	6.93	-1.16	4.53	2.65	2.81	4.92	10.00	7.13
2008	66.58	1.17	6.63	2.85	19.79	0.92	15.58	-0.50	6.94	0.90	4.54	1.00	2.90	3.94	10.19	2.71
2009	67.49	-0.52	6.79	0.40	20.08	-0.39	15.56	-2.04	7.17	1.39	4.71	1.84	3.07	4.05	10.10	-2.73
2008 1	67.92	4.05	6.66	3.33	20.96	6.10	15.73	3.23	6.71	0.19	4.75	0.90	2.84	3.32	10.26	6.08
2	66.05	3.77	6.43	5.53	19.47	5.38	16.12	3.62	6.97	0.25	4.13	1.80	2.85	4.06	10.09	3.14
3	64.14	-1.63	6.56	0.23	18.28	-1.49	14.93	-4.94	7.17	1.15	4.72	0.93	2.83	2.94	9.65	-2.34
4	68.30	-1.18	6.89	2.55	20.50	-5.38	15.57	-3.50	6.90	1.99	4.58	0.44	3.08	5.35	10.78	4.17
2009 1	71.86	-3.78	7.13	-2.53	21.82	-5.32	16.05	-7.25	7.46	1.07	5.37	2.78	3.25	3.98	10.78	-4.46
2	68.85	-2.91	6.80	-1.42	19.94	-4.60	16.30	-5.76	7.58	1.35	4.54	2.43	3.17	3.52	10.51	-3.00
3	65.37	0.93	6.72	1.48	18.61	0.78	15.15	0.50	7.44	2.72	4.84	1.61	2.97	4.17	9.64	-1.07
4	64.75	3.54	6.55	3.79	20.17	7.49	14.90	4.47	6.34	0.32	4.22	0.60	2.94	4.48	9.64	-2.41

表三：生產概況
Table 3. Industry Indicators



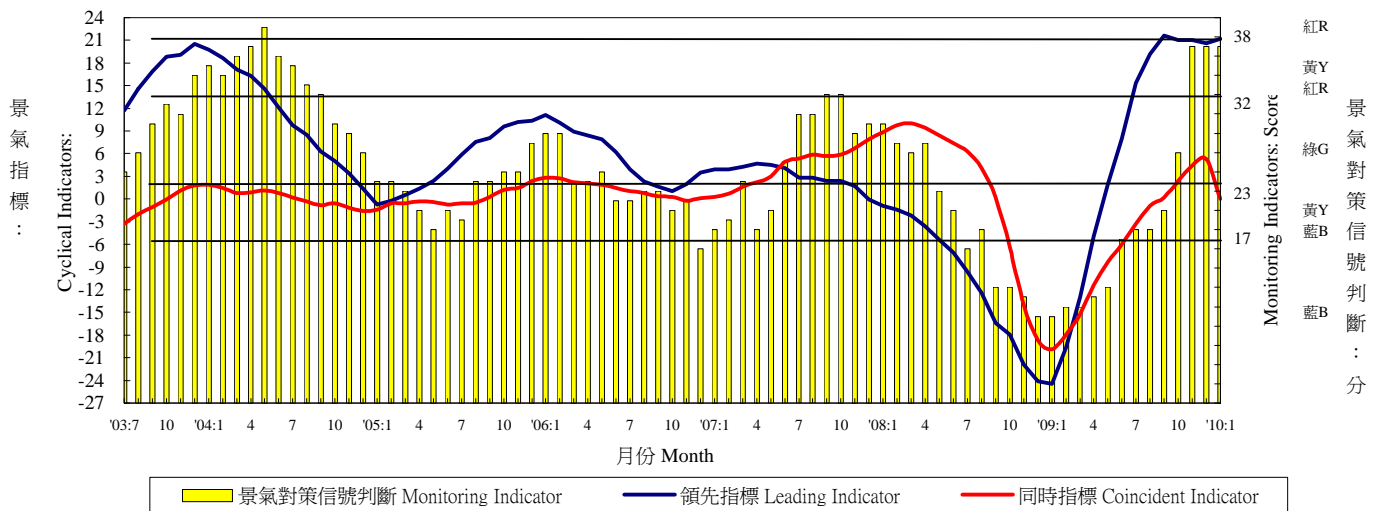
年與月 Year & Month	製造業生產 (基期95年=100) Mfg. Industrial Production (2006=100)		製造業重工業生產 (基期95年=100) Heavy Industry Production (2006=100)		製造業輕工業生產 (基期95年=100) Light Industry Production (2006=100)		製造業單位產出勞動成本 (基期95年=100) Unit labor cost in Manufacturing (2006=100)		製造業薪資 Average Earnings of Employees in Manufacturing	
	指數 Index (%)	年增率 Annual Rate of Change (%)	指數 Index (%)	年增率 Annual Rate of Change (%)	指數 Index (%)	年增率 Annual Rate of Change (%)	指數 Index (%)	年增率 Annual Rate of Change (%)	每人每月 (元) Wages per Month (NT\$)	年增率 Annual Rate of Change (%)
2000	78.60	7.85	69.68	10.97	117.47	0.57	114.41	-2.36	38,914	3.12
2001	71.51	-9.02	63.55	-8.80	106.19	-9.60	118.44	3.52	38,412	-1.29
2002	77.60	8.52	71.51	12.53	104.26	-1.82	107.78	-9.00	38,435	0.06
2003	84.71	9.16	80.15	12.08	104.82	0.54	103.93	-3.57	39,549	2.90
2004	92.31	8.97	88.99	11.03	107.10	2.18	101.69	-2.16	40,657	2.80
2005	95.69	3.66	93.95	5.57	103.43	-3.43	101.83	0.14	41,858	2.95
2006	100.00	4.50	100.00	6.44	100.00	-3.32	100.00	-1.80	42,393	1.28
2007	108.34	8.34	110.28	10.28	99.67	-0.33	95.06	-4.94	43,169	1.83
2008	106.65	-1.56	109.46	-0.74	94.10	-5.58	97.31	2.61	43,105	-0.22
2009	97.39	-8.68	99.96	-8.68	85.94	-8.67	90.55	-6.95	39,152	-9.17
2009 1	64.62	-44.22	62.84	-46.71	72.56	-31.93	229.54	63.36	64,585	-4.29
2009 2	71.57	-26.81	71.06	-30.53	73.87	-5.03	110.63	-22.56	34,930	-39.85
2009 3	86.85	-25.42	86.91	-27.61	86.55	-13.81	89.45	11.80	34,395	-10.77
2009 4	92.77	-19.67	94.19	-20.84	86.44	-13.46	86.21	5.99	35,512	-8.56
2009 5	95.93	-18.31	99.00	-18.55	82.24	-17.03	86.22	5.12	36,694	-7.60
2009 6	101.75	-10.90	105.09	-11.38	86.85	-8.27	79.42	-5.90	35,836	-10.02
2009 7	107.70	-7.25	111.40	-7.01	91.22	-8.49	79.48	-7.30	37,862	-7.68
2009 8	105.11	-8.73	109.11	-8.84	87.33	-8.02	78.62	-7.76	36,524	-9.74
2009 9	111.50	2.89	116.21	3.29	90.50	0.63	77.42	-14.46	38,015	-6.15
2009 10	112.18	8.86	117.00	11.27	90.70	-3.20	75.99	-14.62	37,399	-1.72
2009 11	111.45	34.88	116.39	41.10	89.45	7.40	75.31	-26.77	36,732	2.74
2009 12	116.37	50.68	120.36	61.47	98.56	10.46	80.79	-31.15	40,931	5.45
2010 1	114.40	77.03	118.91	89.23	94.28	29.93	--	--	--	--
1-當月	114.40	77.03	118.91	89.23	94.28	29.93	--	--	--	--

資料來源：經濟部統計處，臺灣地區工業生產統計月報，行政院主計處，臺灣地區薪資與生產力統計月報，人力資源統計月報。

Source : Department of Statistics, Ministry of Economic Affairs, "Industrial Production Statistics Monthly, Taiwan Area, ROC".

表四：景氣概況

Table 4. Cyclical Indicators



年與月 Year & Month	景氣指標 Domestic business indicators		景氣對策信號判斷 (分) Indicators (Score)			製造業設備 利用率 Utility ratio of manufacturing Capacity (%)	製造業存貨率 Ratio of inventor in manufacturing (1996=100)	失業率 Un-employment rates (%)
	領先指標綜合指數6 個月平滑化年變動率 Leading(six months smoothness year exchange rate)(%)	同時指標(不含趨勢 之循環波動) Coincident(non- tendency cycle fluctuation)(point)	黃藍	YB	20			
1998	-2.39	-2.9	黃藍	YB	20	78.84	71.27	2.69
1999	12.78	0.3	黃藍	YB	22	78.91	65.99	2.92
2000	1.13	8.4	綠	G	26	80.35	65.75	2.99
2001	-9.87	-4.6	藍	B	10	76.28	78.44	4.57
2002	11.03	-1.5	綠	G	23	77.02	69.89	5.17
2003	11.20	-2.3	綠	G	23	78.32	65.65	4.99
2004	11.08	0.2	黃紅	YR	33	80.08	62.59	4.44
2005	4.93	0.0	黃藍	YB	22	80.13	66.39	4.13
2006	5.58	1.3	黃藍	YB	22	80.29	63.65	3.91
2007	4.98	4.2	綠	G	25	80.42	62.33	3.91
2008	4.46	2.1	黃藍	YB	19	-	-	4.14
2009	5.56	-5.9	黃藍	YB	19	-	-	5.85
2009 2	-19.6	-17.9	藍	B	10	-	-	5.75
2009 3	-12.9	-15.2	藍	B	10	-	-	5.81
2009 4	-5.0	-11.4	藍	B	11	-	-	5.76
2009 5	1.9	-8.4	藍	B	12	-	-	5.82
2009 6	8.0	-6.0	黃藍	YB	17	-	-	5.94
2009 7	15.4	-3.3	黃藍	YB	18	-	-	6.07
2009 8	19.2	-0.9	黃藍	YB	18	-	-	6.13
2009 9	21.6	0.2	黃藍	YB	20	-	-	6.04
2009 10	21.0	2.4	綠	G	26	-	-	5.96
2009 11	21.0	4.4	黃紅	YR	37	-	-	5.86
2009 12	20.6	5.3	黃紅	YR	37	-	-	5.74
2010 1	21.2	--	黃紅	YR	37	--	--	5.68

資料來源：行政院經建會，台灣景氣指標，經濟部統計處，國內外經濟統計指標速報。

註：景氣指標與景氣對策信號之年平均數字，係依據當年12月份之數字。

Source：Council for Economic Planning & Development, ROC, "Business Indicators of Taiwan."

Dept. of Statistics, Ministry of Economic Affairs, "Domestic & Foreign Express Report of Economic Statistics Indicators"

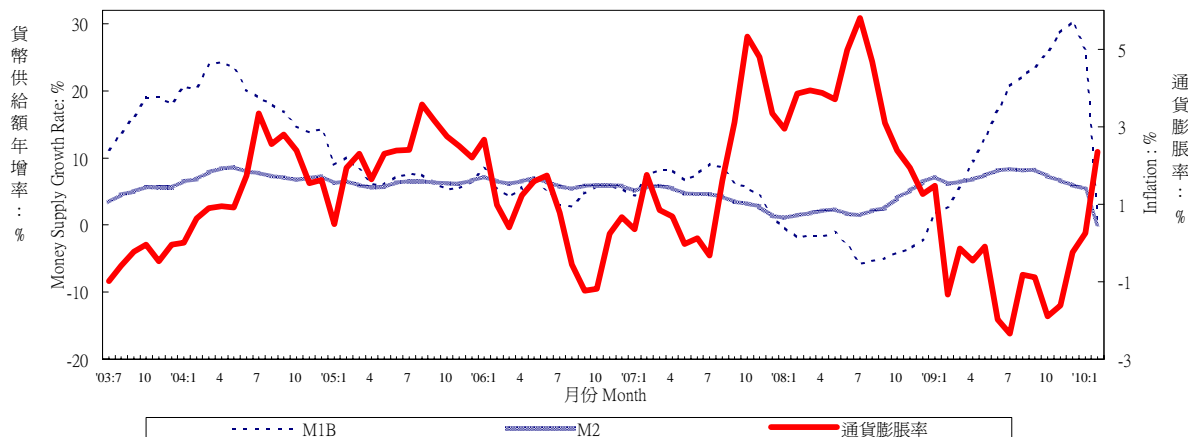
Note：R:Red,overheating; G:Green,stable; B:Blue,recession; YR:between Y & R; YB:between Y & B

表五：物價與金融概況

Table 5. Prices and Financial Situation

貨幣供給額與通貨膨脹率

Money Supply Growth Rate and Inflation

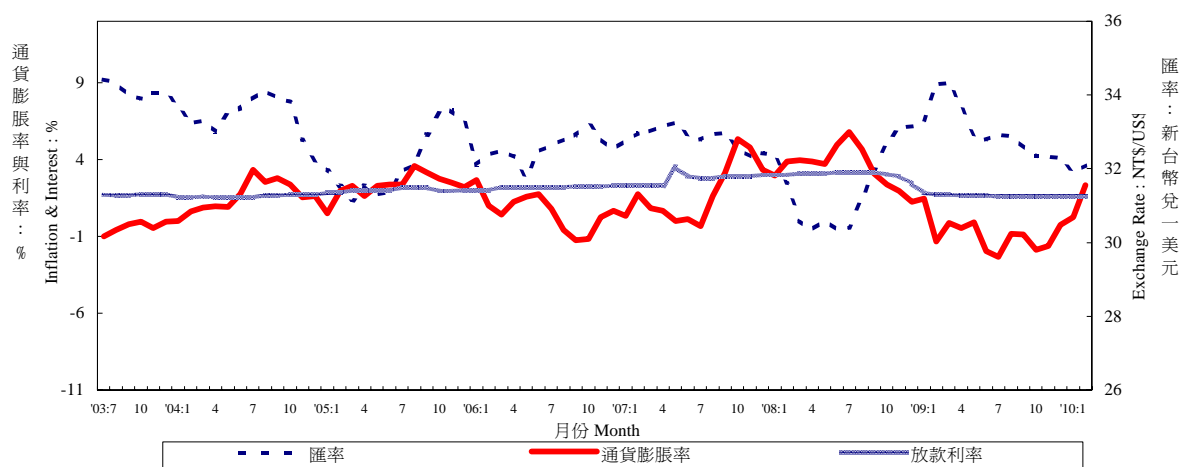


年與月 Year & Month	躉售物價 (基期90年=100) Wholesale Prices (2001=100)		消費者物價 (基期90年=100) Consumer Prices (2001=100)		貨幣供給額年增率 Money Supply (Annual Growth Rate)		
	指數 Index (%)	年增率 Annual Rate of Change (%)	指數 Index (%)	年增率 Annual Rate of Change (%)	M1A (%)	M1B (%)	M2 (%)
1998	104.30	0.60	98.60	1.69	0.39	2.52	8.76
1999	99.55	-4.55	98.77	0.17	3.09	9.87	8.33
2000	101.36	1.82	100.01	1.26	7.36	10.58	7.04
2001	100.00	-1.34	100.00	-0.01	-4.69	-1.02	5.79
2002	85.78	-14.22	99.80	-0.20	8.59	17.01	3.55
2003	87.91	2.48	95.62	-4.19	11.28	11.82	3.77
2004	94.09	7.03	97.17	1.61	21.10	18.98	7.45
2005	94.67	0.61	99.41	2.31	7.65	7.10	6.22
2006	100.00	5.64	100.00	0.60	5.72	5.30	6.22
2007	106.47	6.47	101.80	1.80	6.80	6.44	4.25
2008	111.95	5.15	105.39	3.53	0.97	-2.94	2.67
2009	102.17	-8.73	104.47	-0.87	13.38	16.54	7.22
2009 3	100.13	-9.32	102.95	-0.15	5.98	5.44	6.39
4	99.50	-11.14	103.74	-0.46	8.91	9.50	6.78
5	99.52	-13.51	104.18	-0.09	10.83	12.95	7.35
6	101.12	-13.70	104.08	-1.98	13.90	17.04	8.15
7	102.35	-13.99	104.28	-2.33	15.67	20.64	8.33
8	104.70	-11.01	106.16	-0.82	17.23	22.14	8.17
9	104.54	-9.47	105.46	-0.88	15.63	23.51	8.28
10	103.94	-6.17	105.87	-1.89	17.98	25.66	7.28
11	105.19	1.07	105.07	-1.62	22.62	28.62	6.59
12	105.58	5.75	104.57	-0.25	24.14	30.30	5.99
2010 1	105.89	6.74	104.70	0.26	18.07	26.15	5.35
2	106.20	5.87	105.26	2.35	--	--	--
1-2	106.05	6.31	104.98	1.30	--	--	--

資料來源：中央銀行經濟研究處，臺灣地區金融統計月報，臺灣證券交易所，證券統計資料月報。

Source : Economic Research Department, The Central Bank of China. Financial Statistics Monthly, Taiwan District ROC.

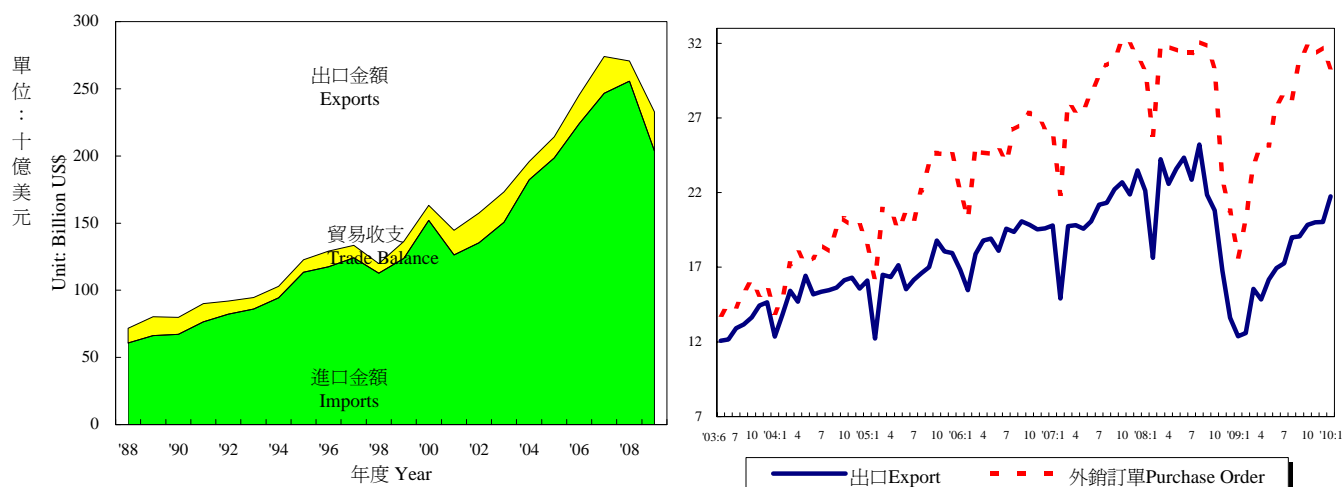
利率、通貨膨脹率與匯率 Interest Rate, Exchange Rate and Inflation



年與月 Year & Month	存款 加權平均利率 Weighted Average Interest Rates on Deposits (%)	基本放款利率 Short Term Loans (1 Year, Max) Interest Rate (%)	商業本票 初級市場 180天利率 Commercial Paper Primary Mkt.(180d) Interest Rate (%)	股票價格 Stock Prices		匯率 Exchange Rate	
				指數 Index (%)	年增率 Annual Rate of Change (%)	新臺幣 對一美元 NT\$ Against US\$	新臺幣 對一日元 NT\$ Against Yen
1998	5.72	8.01	7.04	7,738	-8.00	33.44	0.2555
1999	5.00	7.84	5.38	7,427	-4.02	32.27	0.2833
2000	4.62	7.86	5.62	7,847	5.66	31.23	0.2897
2001	4.09	7.78	4.17	4,907	-37.46	33.80	0.2781
2002	1.83	7.46	2.75	5,247	6.91	34.58	0.2757
2003	1.11	7.10	1.80	5,144	-1.96	34.42	0.2969
2004	1.08	7.07	1.61	6,033	17.30	33.43	0.3089
2005	1.34	7.32	2.00	6,090	0.94	32.18	0.2920
2006	1.61	7.53	2.19	6,842	12.35	32.53	0.2797
2007	1.90	7.93	2.74	8,489	24.08	32.84	0.2789
2008	1.98	8.15	3.03	7,065	-16.78	31.53	0.3051
2009	0.39	6.51	1.65	6,393	-9.51	33.06	0.3533
2009 3	0.35	7.46	1.70	4,926	-41.63	34.34	0.3498
4	0.35	6.23	1.65	5,724	-35.52	33.70	0.3404
5	0.35	6.23	1.65	6,586	-26.08	32.91	0.3417
6	0.35	6.23	1.65	6,496	-20.59	32.79	0.3397
7	0.35	6.17	1.60	6,835	-4.11	32.92	0.3484
8	0.35	6.17	1.60	6,845	-3.19	32.88	0.3467
9	0.35	6.17	1.60	7,321	18.01	32.59	0.3562
10	0.47	6.16	1.60	7,589	50.48	32.33	0.3581
11	0.47	6.16	1.60	7,612	68.79	32.34	0.3626
12	0.47	6.16	1.60	7,837	74.29	32.28	0.3604
2010 1	0.47	6.16	1.60	8,099	80.97	31.90	0.3499
2	--	6.16	1.60	7,432	66.22	32.09	0.3562
3	--	--	--	--	--	--	--

表六：臺灣進出口貿易

Table 6. Foreign Trade Values



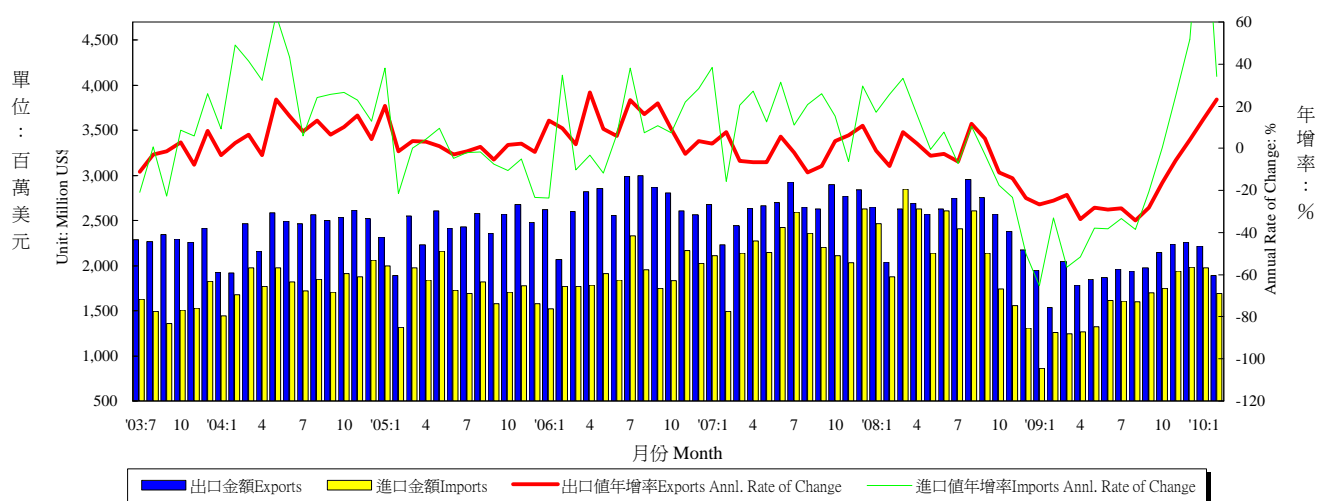
年與月 Year & Month	海關進出口貿易額 Export & Import Values of Foreign Trade					外銷訂單 Purchase Order for Exports	
	出口金額 (百萬美元) Amount (Mil. US\$)	年增率 Annual Rate of Change (%)	進口金額 (百萬美元) Amount (Mil. US\$)	年增率 Annual Rate of Change (%)	貿易收支 (百萬美元) Trade Balance	金額 (百萬美元) Amount (Mil. US\$)	年增率 Annual Rate of Change (%)
1998	112,595	-9.32	105,230	-8.46	7,366	118,843	-4.00
1999	123,733	9.89	111,196	5.67	12,537	127,474	7.26
2000	151,950	22.80	140,732	26.56	11,218	153,424	20.36
2001	126,314	-16.87	107,971	-23.28	18,344	135,714	-11.54
2002	135,317	7.13	113,245	4.89	22,072	150,952	11.23
2003	150,600	11.29	128,010	13.04	22,590	170,028	12.64
2004	182,370	21.10	168,758	31.83	13,613	215,087	26.50
2005	198,432	8.81	182,614	8.21	15,817	256,393	19.20
2006	224,017	12.89	202,698	11.00	21,319	299,313	16.74
2007	246,677	10.12	219,252	8.17	27,425	345,814	15.54
2008	255,629	3.63	240,448	9.67	15,181	351,723	1.71
2009	203,698	-20.31	174,663	-27.36	29,035	322,440	-8.33
2009 3	15,563	-35.79	12,166	-49.54	3,397	23,937	-24.29
4	14,843	-34.28	12,712	-41.14	2,131	25,128	-20.90
5	16,170	-31.46	13,011	-39.11	3,158	25,166	-20.14
6	16,946	-30.38	15,196	-33.44	1,750	27,939	-10.91
7	17,264	-24.48	15,250	-34.11	2,014	28,614	-8.77
8	18,998	-24.64	17,045	-32.29	1,954	28,287	-11.96
9	19,066	-12.72	16,520	-21.09	2,546	30,837	-3.00
10	19,844	-4.59	16,588	-6.68	3,256	31,754	4.41
11	20,016	19.35	17,904	17.95	2,112	31,260	37.11
12	20,030	46.92	18,384	56.20	1,646	31,725	52.63
2010 1	21,745	75.79	19,253	114.72	2,493	30,369	71.81
2	16,695	32.62	15,795	44.64	900	--	--
1-2	38,440	54.02	35,048	76.24	3,392	--	--

資料來源：財政部統計處，臺灣地區進出口貿易統計月報，經濟部統計處，臺灣地區外銷訂單統計速報。

Source : Department of Statistics, Ministry of Finance, "Primary Statistics of Export & Import."

表七：臺灣對美國之進出口狀況

Table 7. Trade with the United States



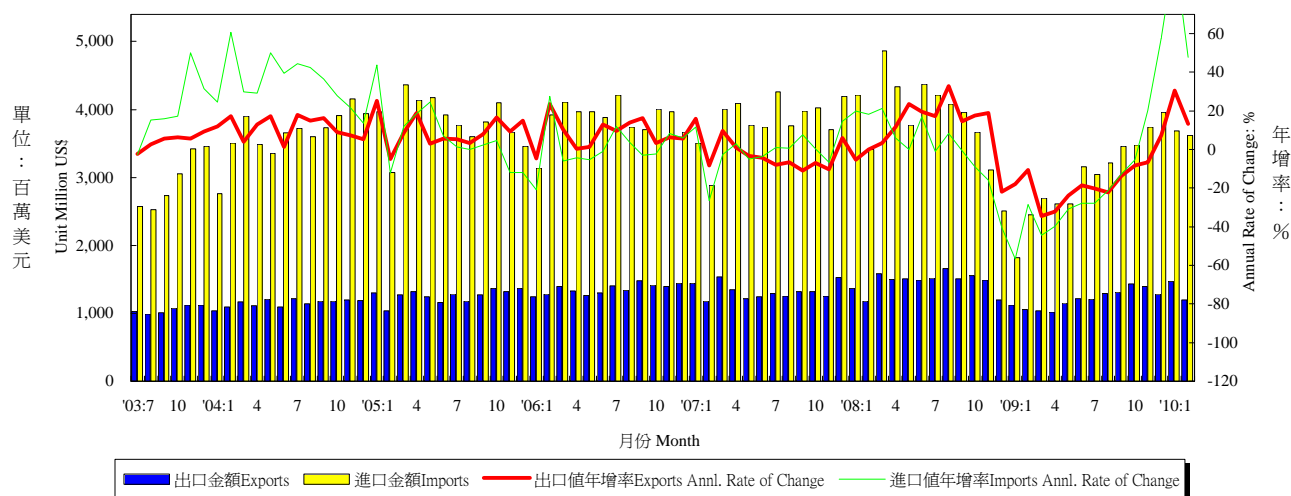
年與月 Year & Month	出口值 Exports			進口值 Imports			出入超 Trade Balance	貿易總額 Total Trade Amount	
	金額 (百萬美元) Amount (Mil. US\$)	年增率 Annual rate of change (%)	份額 Export share (%)	金額 (百萬美元) Amount (Mil. US\$)	年增率 Annual rate of change (%)	份額 Export share (%)	金額 (百萬美元) Amount (Mil. US\$)	金額 (百萬美元) Amount (Mil. US\$)	年增率 Annual rate of change (%)
1998	29,959	1.38	26.61	19,845	-14.59	18.86	10,114	49,804	-5.65
1999	31,339	4.61	25.33	19,818	-0.14	17.82	11,521	50,595	1.59
2000	35,588	13.56	23.42	25,270	27.51	17.96	10,319	59,941	18.47
2001	28,136	-20.94	22.27	18,407	-27.16	17.05	9,728	45,884	-23.45
2002	27,365	-2.74	20.22	18,256	-0.82	16.12	9,110	45,621	-0.57
2003	26,554	-2.97	17.63	16,995	-6.90	13.28	9,558	43,549	-4.54
2004	28,751	8.27	15.77	21,780	28.16	12.91	6,971	50,531	16.03
2005	29,114	1.26	14.67	21,171	-2.80	11.59	7,943	50,285	-0.49
2006	32,361	11.15	14.45	22,664	7.06	11.18	9,696	55,025	9.43
2007	32,077	-0.88	13.00	26,508	16.96	12.09	5,569	58,585	6.47
2008	30,791	-4.01	12.05	26,327	-0.68	10.95	4,464	57,118	-2.51
2009	23,557	-23.50	11.56	18,156	-31.03	10.39	5,400	41,713	-26.97
2009 3	2,046	-22.16	13.15	1,243	-56.36	10.22	803	3,290	-39.95
2009 4	1,783	-33.74	12.01	1,269	-51.73	9.99	514	3,052	-42.64
2009 5	1,848	-28.05	11.43	1,324	-38.02	10.18	524	3,172	-32.58
2009 6	1,867	-29.04	11.02	1,613	-38.17	10.62	253	3,480	-33.59
2009 7	1,963	-28.59	11.37	1,607	-33.20	10.54	356	3,570	-30.74
2009 8	1,940	-34.39	10.21	1,602	-38.56	9.40	338	3,543	-36.35
2009 9	1,978	-28.18	10.37	1,698	-20.53	10.28	279	3,676	-24.83
2009 10	2,146	-16.47	10.82	1,751	0.55	10.55	396	3,897	-9.60
2009 11	2,240	-5.77	11.19	1,942	24.89	10.85	298	4,183	6.36
2009 12	2,261	3.98	11.29	1,986	51.81	10.80	275	4,247	21.95
2010 1	2,215	13.71	10.19	1,976	129.85	10.26	240	4,191	49.27
2010 2	1,894	23.28	11.34	1,689	34.11	10.69	205	3,583	28.16
2010 1-2	4,109	17.93	10.77	3,664	72.95	10.48	445	7,774	38.73

資料來源：財政部統計處，臺灣地區進出口貿易統計月報。

Source : Dept. of Statistics, Ministry of Finance, "Preliminary Statistics of Export & Import."

表八：臺灣對日本之進出口狀況

Table 8. Trade with Japan



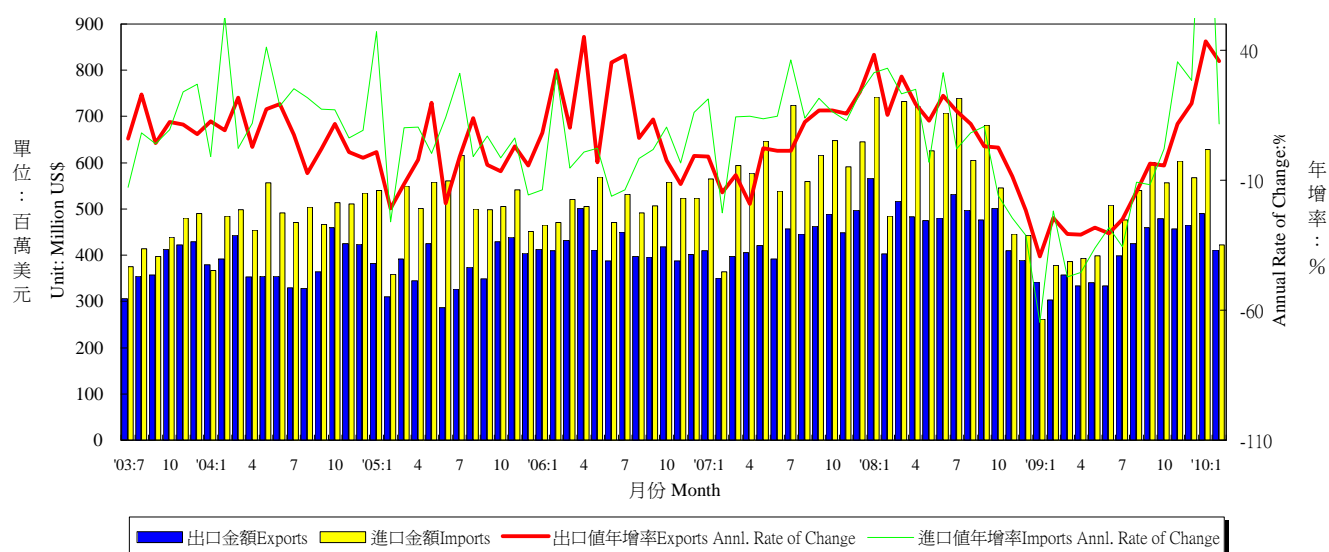
年與月 Year & Month	出口值 Exports			進口值 Imports			出入超 Trade Balance	貿易總額 Total Trade Amount	
	金額 (百萬美元) Amount (Mil. US\$)	年增率 Annual rate of change (%)	份額 Export share (%)	金額 (百萬美元) Amount (Mil. US\$)	年增率 Annual rate of change (%)	份額 Export share (%)	金額 (百萬美元) Amount (Mil. US\$)	金額 (百萬美元) Amount (Mil. US\$)	年增率 Annual rate of change (%)
1998	9,439	-19.30	8.38	27,060	-6.76	25.71	-17,621	36,498	-10.36
1999	12,043	27.59	9.73	30,637	13.22	27.55	-18,594	42,680	16.94
2000	16,887	40.23	11.11	38,622	26.06	27.44	-21,735	55,509	30.06
2001	13,024	-22.87	10.31	25,933	-32.85	24.02	-12,909	38,958	-29.82
2002	12,368	-5.04	9.14	27,363	5.51	24.16	-14,995	39,731	1.99
2003	12,430	0.50	8.25	32,720	19.57	25.56	-20,290	45,149	13.64
2004	13,808	11.09	7.57	43,718	33.61	25.91	-29,910	57,526	27.41
2005	15,111	9.43	7.62	46,053	5.34	25.22	-30,943	61,164	6.32
2006	16,300	7.87	7.28	46,284	0.50	22.83	-29,984	62,585	2.32
2007	15,934	-2.25	6.46	45,937	-0.75	20.95	-30,003	61,870	-1.14
2008	17,556	10.18	6.87	46,508	1.24	19.34	-28,952	64,064	3.55
2009	14,508	-17.36	7.12	36,231	-22.10	20.74	-21,724	50,739	-20.80
2009 3	1,036	-34.56	6.66	2,697	-44.56	22.17	-1,660	3,733	-42.10
4	1,016	-32.29	6.84	2,610	-39.83	20.53	-1,595	3,626	-37.89
5	1,146	-23.97	7.09	2,607	-30.76	20.04	-1,461	3,753	-28.82
6	1,215	-18.59	7.17	3,161	-27.77	20.80	-1,946	4,376	-25.43
7	1,207	-20.23	6.99	3,042	-27.87	19.95	-1,835	4,249	-25.86
8	1,291	-22.14	6.80	3,210	-21.26	18.84	-1,919	4,502	-21.52
9	1,308	-13.41	6.86	3,458	-12.56	20.93	-2,150	4,765	-12.80
10	1,429	-8.09	7.20	3,476	-5.12	20.95	-2,046	4,905	-6.00
11	1,396	-6.51	6.97	3,743	20.18	20.90	-2,347	5,138	11.53
12	1,284	7.42	6.41	3,957	57.78	21.52	-2,673	5,240	41.53
2010 1	1,468	30.57	6.75	3,689	102.31	19.16	-2,220	5,157	74.94
2	1,196	13.39	7.17	3,617	47.80	22.90	-2,421	4,814	37.44
1-2	2,665	22.26	6.96	7,306	71.07	21.03	-4,641	9,971	54.58

資料來源：財政部統計處，臺灣地區進出口貿易統計月報。

Source : Dept. of Statistics, Ministry of Finance, "Preliminary Statistics of Export & Import."

表九：臺灣對德國之進出口狀況

Table 9. Trade with Germany



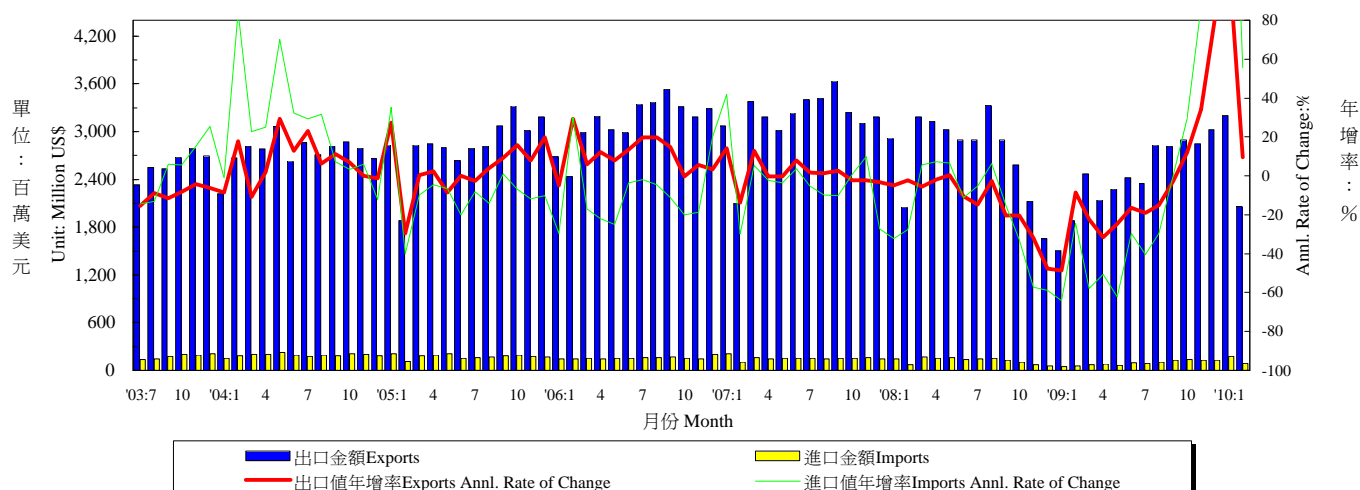
年與月 Year & Month	出口值 Exports			進口值 Imports			出入超 Trade Balance	貿易總額 Total Trade Amount	
	金額 (百萬美元) Amount (Mil. US\$)	年增率 Annual rate of change (%)	份額 Export share (%)	金額 (百萬美元) Amount (Mil. US\$)	年增率 Annual rate of change (%)	份額 Export share (%)	金額 (百萬美元) Amount (Mil. US\$)	金額 (百萬美元) Amount (Mil. US\$)	年增率 Annual rate of change (%)
1998	4,107	11.29	3.65	5,170	-3.70	4.91	-1,063	9,278	2.40
1999	4,099	-0.21	3.31	5,332	3.12	4.79	-1,233	9,430	1.65
2000	4,936	20.44	3.25	5,579	4.63	3.96	-643	10,515	11.50
2001	4,537	-8.10	3.59	4,274	-23.38	3.96	262	8,811	-16.21
2002	3,886	-14.33	2.87	4,448	4.07	3.93	-562	8,335	-5.40
2003	4,286	10.27	2.85	4,986	12.09	3.90	-701	9,272	11.24
2004	4,607	7.51	2.53	5,852	17.36	3.47	-1,245	10,459	12.81
2005	4,463	-3.13	2.25	6,180	5.61	3.38	-1,717	10,643	1.76
2006	5,007	12.19	2.24	6,135	-0.73	3.03	-1,128	11,142	4.69
2007	5,175	3.35	2.10	7,070	15.24	3.22	-1,895	12,245	9.90
2008	5,730	10.72	2.24	7,474	5.72	3.11	-1,745	13,204	7.83
2009	4,696	-18.04	2.31	5,673	-24.10	3.25	-977	10,369	-21.47
2009 3	357	-30.75	2.30	387	-47.21	3.18	-29	744	-40.41
4	333	-31.03	2.25	394	-45.46	3.10	-60	727	-39.67
5	340	-28.27	2.11	399	-36.26	3.06	-58	739	-32.82
6	334	-30.48	1.97	508	-28.19	3.34	-174	842	-29.12
7	399	-25.11	2.31	476	-35.59	3.12	-78	875	-31.20
8	425	-14.58	2.24	540	-10.76	3.17	-115	965	-12.48
9	460	-3.62	2.41	601	-11.83	3.64	-141	1,060	-8.45
10	479	-4.38	2.41	557	2.07	3.36	-78	1,036	-1.02
11	457	11.59	2.28	604	35.48	3.37	-147	1,062	24.04
12	466	19.53	2.33	568	28.28	3.09	-103	1,034	24.19
2010 1	491	43.24	2.26	629	140.79	3.27	-138	1,120	85.45
2	412	35.68	2.46	422	11.51	2.67	-11	834	22.26
1-2	902	39.69	2.36	1,051	64.30	2.97	-149	1,953	51.94

資料來源：財政部統計處，臺灣地區進出口貿易統計月報

Source : Dept. of Statistics, Ministry of Finance, "Preliminary Statistics of Export & Import."

表十：臺灣對香港之進出口狀況

Table 10. Trade with Hong Kong



年與月 Year & Month	出口值 Exports			進口值 Imports			出入超 Trade Balance	貿易總額 Total Trade Amount	
	金額 (百萬美元) Amount (Mil. US\$)	年增率 Annual rate of change (%)	份額 Export share (%)	金額 (百萬美元) Amount (Mil. US\$)	年增率 Annual rate of change (%)	份額 Export share (%)	金額 (百萬美元) Amount (Mil. US\$)	金額 (百萬美元) Amount (Mil. US\$)	年增率 Annual rate of change (%)
1998	25,398	-11.47	22.56	2,076	4.01	1.97	23,322	27,474	-10.46
1999	26,825	5.62	21.68	2,224	7.11	2.00	24,602	29,049	5.73
2000	32,742	22.06	21.55	2,364	6.32	1.68	30,378	35,106	20.85
2001	28,713	-12.31	22.73	2,052	-13.22	1.90	26,661	30,764	-12.37
2002	32,960	14.79	24.36	1,915	-6.66	1.69	31,045	34,875	13.36
2003	30,868	-6.35	20.50	1,917	0.12	1.50	28,951	32,785	-5.99
2004	32,896	6.57	18.04	2,309	20.44	1.37	30,587	35,205	7.38
2005	34,036	3.46	17.15	2,110	-8.64	1.16	31,926	36,145	2.67
2006	37,381	9.83	16.69	1,881	-10.86	0.93	35,501	39,262	8.62
2007	37,980	1.60	15.40	1,825	-2.96	0.83	36,155	39,805	1.38
2008	32,690	-13.93	12.79	1,493	-18.20	0.62	31,197	34,183	-14.12
2009	29,449	-9.92	14.46	1,123	-24.80	0.64	28,326	30,571	-10.57
2009 2	1,879	-8.39	14.92	55	-24.16	0.51	1,823	1,934	-8.94
3	2,472	-22.44	15.89	71	-57.80	0.59	2,401	2,544	-24.23
4	2,143	-31.43	14.44	77	-50.65	0.61	2,066	2,220	-32.35
5	2,279	-24.67	14.09	61	-62.00	0.47	2,217	2,340	-26.56
6	2,419	-16.35	14.28	96	-29.66	0.63	2,323	2,516	-16.95
7	2,348	-18.95	13.60	85	-40.38	0.56	2,262	2,433	-19.96
8	2,829	-15.00	14.89	106	-29.67	0.62	2,723	2,935	-15.64
9	2,812	-2.94	14.75	128	-0.39	0.77	2,685	2,940	-2.83
10	2,895	12.02	14.59	135	29.23	0.81	2,760	3,030	12.69
11	2,848	34.28	14.23	128	87.25	0.72	2,720	2,976	35.93
12	3,022	82.05	15.09	128	116.22	0.69	2,895	3,150	83.23
2010 1	3,200	113.00	14.71	177	247.57	0.92	3,023	3,377	117.41
2	2,061	9.71	12.34	86	55.54	0.55	1,975	2,147	11.02
1-2	5,261	55.60	13.53	263	147.47	0.73	4,997	5,524	58.41

資料來源：財政部統計處，臺灣地區進出口貿易統計月報。

Source : Dept. of Statistics, Ministry of Finance, "Preliminary Statistics of Export & Import."

表十一：兩岸經貿

Table 11. Trade Across the Taiwan Straits

年與月 Year & Month	經由香港之轉口貿易 Trade through H. K.						出入超金額 百萬美元 Net Export Amount (Mil.US\$)	匯率 人民幣兌 一美元 Exchange Rate (RMB/US\$)	大陸 消費者物價 總指數 年增率 China's Consumer Price Index
	出口 Exports			進口 Imports					
	金額 (百萬美元) Amount (Mil. US\$)	年增率 Annual rate of change (%)	份額 Export share (%)	金額 (百萬美元) Amount (Mil. US\$)	年增率 Annual rate of change (%)	份額 Export share (%)			
1998	8,364	-13.91	7.43	1,655	-5.10	1.57	6,709	8.28	-0.77
1999	8,175	-2.26	6.61	1,628	-1.62	1.46	6,547	8.28	-1.40
2000	9,593	17.35	6.31	1,981	21.64	1.41	7,613	8.28	0.35
2001	8,812	-8.15	6.98	1,693	-14.50	1.57	7,118	8.28	0.73
2002	10,312	17.03	7.62	1,708	0.87	1.51	8,604	8.28	-1.48
2003	11,789	14.33	7.83	2,161	26.52	1.69	9,628	8.28	1.95
2004	14,766	25.25	8.10	2,486	15.05	1.47	12,279	8.28	2.70
2005	17,055	15.51	8.60	2,661	7.02	1.46	14,395	8.19	-2.01
2006	18,707	9.68	8.35	2,898	8.90	1.43	15,809	7.97	-0.34
2007	21,213	13.40	8.60	2,929	1.07	1.34	18,284	7.61	3.25
2008	20,041	-5.53	7.84	2,957	0.96	1.23	17,084	6.95	1.08
2009	18,032	-10.02	8.85	2,983	0.87	1.71	15,050	6.83	-6.22
2008 10	2,095	3.64	10.07	265	7.49	1.49	1,831	6.83	4.00
11	1,349	-31.50	8.04	238	-9.45	1.57	1,111	6.83	2.40
12	1,108	-37.63	8.13	223	-9.29	1.89	885	6.84	1.20
2009 1	950	-49.92	7.68	164	-35.29	1.83	786	6.84	1.00
2	989	-21.55	7.86	152	-13.00	1.39	837	6.84	-1.60
3	1,255	-22.32	8.07	196	-22.45	1.61	1,060	6.84	-1.20
4	1,524	-21.29	10.27	224	-15.05	1.76	1,300	6.83	-1.50
5	1,414	-20.62	8.75	219	-12.12	1.68	1,196	6.82	-1.40
6	1,550	-0.95	9.15	234	-2.92	1.54	1,316	6.83	-1.70
7	1,481	-25.13	8.58	292	9.97	1.92	1,189	6.83	-1.80
8	1,553	-11.33	8.18	230	-14.71	1.35	1,324	6.83	-1.20
9	1,895	11.38	9.94	255	-2.75	1.55	1,639	6.83	-0.80
10	1,882	-10.17	9.49	286	8.26	1.73	1,596	6.83	-0.50
11	1,800	33.47	8.99	315	32.57	1.76	1,485	6.83	0.60
12	1,737	56.79	8.67	415	86.25	2.26	1,322	6.83	1.90
2010 1	--	--	--	--	--	--	--	6.83	1.50
2	--	--	--	--	--	--	--	6.83	--
1-2	18,032	-10.02	8.85	2,983	0.87	1.71	15,050	6.83	-0.68

資料來源：行政院大陸委員會，兩岸經濟統計月報。

Source : China Statistical Informational and Consultancy Service Center. "China Monthly Review."