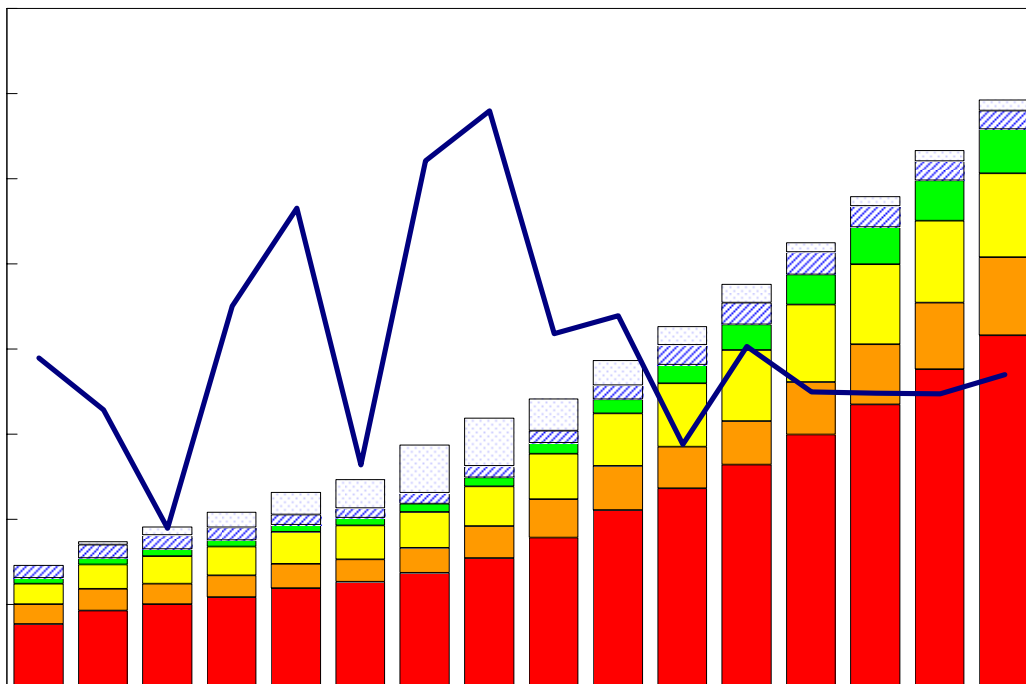


# Major Economic Indicators for Taiwan



Chung-Hua Institution for Economic Research  
January 2008

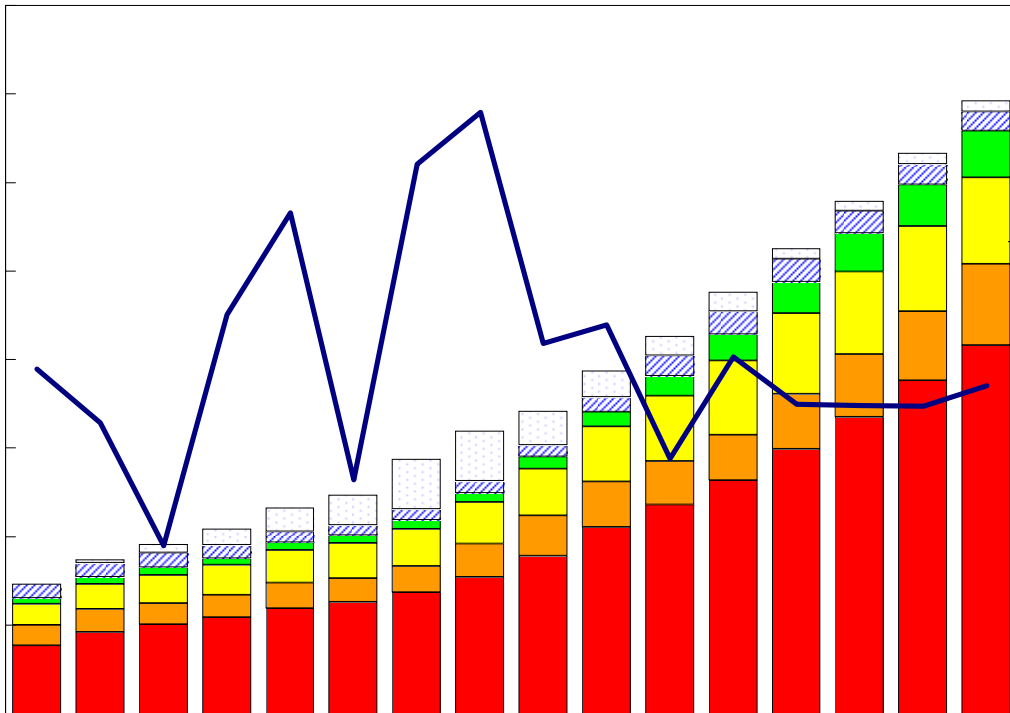
# 目次

# Index

臺灣經濟預測.....I	Taiwan's Macroeconomic Forecasts.....I
表一：主要總體經濟指標.....2-3	Table 1 : GDP Components by Expenditure.....2-3
表二：各業產值概況.....4-5	Table 2 : GDP Components by Industry.....4-5
表三：生產概況.....6	Table 3 : Industry Indicators.....6
表四：景氣概況.....7	Table 4 : Cyclical Indicators.....7
表五：物價與金融概況.....8-9	Table 5 : Prices and Financial Situation.....8-9
表六：臺灣進出口貿易.....10	Table 6 : Foreign Trade Values.....10
表七：臺灣對美國之進出口狀況.....11	Table 7 : Trade with the United States .....11
表八：臺灣對日本之進出口狀況.....12	Table 8 : Trade with Japan.....12
表九：臺灣對德國之進出口狀況.....13	Table 9 : Trade with Germany.....13
表十：臺灣對香港之進出口狀況.....14	Table 10 : Trade with Hong Kong .....14
表十一：兩岸經貿.....15	Table 11 : Trade across the Taiwan Straits.....15

# 臺灣重要經濟變動指標

## Major Economic Indicators for Taiwan



經濟展望中心 編製

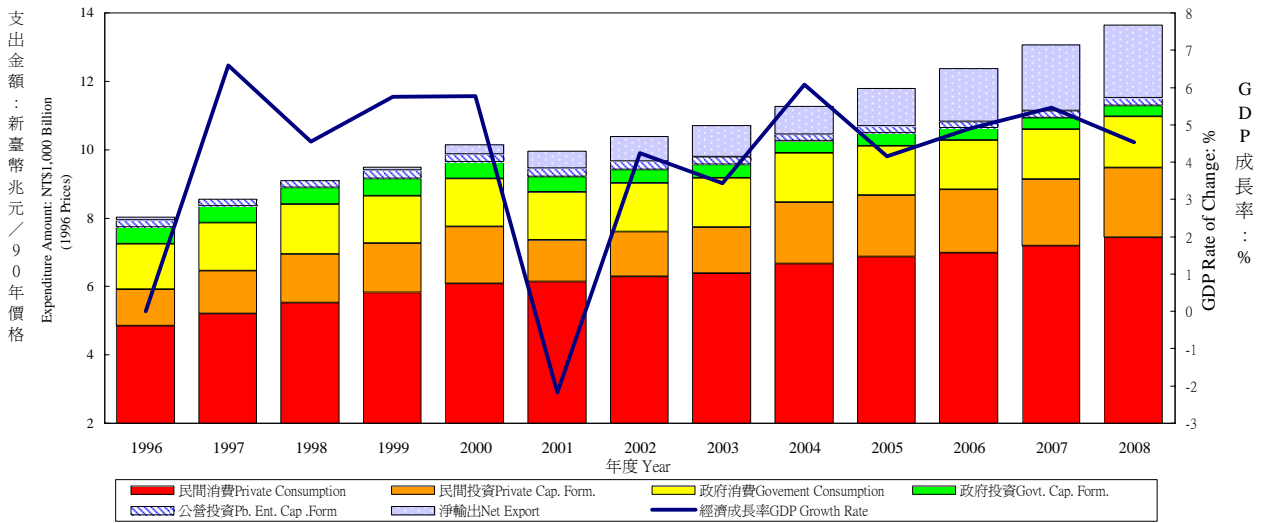
The Center for Economic Forecasting

## Taiwan's Macroeconomic Forecasts

	2007	2008				2006	2007	2008
	4	1	2	3	4			
<b>GDP, GNP及其組成, 新臺幣十億元(2001年基期)</b>								
<b>GDP, GNP and Major Components, Billions of 2001 NT Dollars</b>								
GDP	3402.42	3,291.90	3,269.10	3,481.16	3,552.12	12,386.80	13,049.79	13,594.29
Real GDP	5.02	4.42	4.27	3.61	4.40	4.89	5.35	4.17
GNP	3487.90	3,427.21	3,349.67	3,540.20	3,632.80	12,686.87	13,393.24	13,949.88
Real GNP	5.25	4.56	3.82	4.08	4.15	4.92	5.57	4.16
GNP(US\$)	4559.82	4,597.66	4,263.53	4,731.50	4,845.51	16,493.64	17,244.46	18,438.19
per capita GNP (%)	6.71	7.06	7.09	7.32	6.27	15.86	4.55	6.92
Private Consumption	1756.28	1,961.41	1,721.38	1,918.42	1,807.32	6,985.99	7,186.84	7,408.53
Gov't Consumption	3.33	3.31	3.21	2.90	2.91	1.76	2.88	3.08
Total Fixed Investment	412.38	323.48	364.26	390.72	418.30	1,443.44	1,461.76	1,496.75
Private Fixed Investment	3.12	3.35	2.48	2.56	1.43	-0.41	1.27	2.39
Exports, gds+serv	692.13	520.20	658.41	669.76	722.92	2,388.39	2,478.23	2,571.29
Imports, gds+serv	2.79	3.62	3.82	3.06	4.45	0.62	3.76	3.76
Other Macroeconomic Variables	509.10	418.03	537.19	531.54	534.49	1851.28	1943.64	2021.25
Merchandise Export(US \$bn)	2.90	4.03	3.64	3.34	4.99	2.96	4.99	3.99
Merchandise Import (US \$bn)	2314.40	2,165.04	2,317.38	2,377.68	2,444.48	8,234.72	8,853.36	9,304.58
GDP Deflator (2001=100)	7.76	5.24	6.02	3.56	5.62	10.37	7.51	5.10
Consumer Price Index (2001=100)	1778.73	1,664.80	1,797.01	1,883.64	1,851.20	6,676.13	6,927.11	7,196.66
Money Stock (M1B)	5.12	4.86	4.12	2.67	4.07	5.16	3.76	3.89
NT\$/US\$ Exchange Rate	643.66	581.58	634.67	683.38	689.07	2240.17	2431.04	2588.70
90 day Commercial Paper Rate	9.12	6.82	6.69	5.45	7.05	12.89	8.52	6.49
% Unemployment Rate	553.94	516.69	586.73	613.78	590.60	2026.98	2166.93	2307.79
	8.02	7.25	6.25	6.00	6.62	11.00	6.90	6.50
	96.52	98.70	93.24	97.96	97.18	95.96	96.17	96.77
	0.25	0.64	0.45	0.73	0.69	-1.05	0.22	0.63
	107.14	106.18	107.03	108.36	108.97	104.08	105.53	107.63
	2.87	2.18	2.15	1.95	1.71	0.60	1.39	2.00
	26470.11	27,516.13	27,412.11	27,239.51	27,628.20	25,057.06	26,234.69	27,449.02
	4.21	5.28	4.56	4.30	4.38	6.22	4.70	4.63
	32.40	32.27	32.13	32.06	31.85	32.53	32.84	32.07
	1.37	1.99	2.96	2.60	1.70	18.01	-0.93	2.31
	2.12	2.14	2.16	2.17	2.19	1.54	1.93	2.16
	29.45	28.01	11.70	9.78	3.16	20.87	25.46	12.39
	3.91	3.85	3.80	4.02	3.86	3.91	3.91	3.88

# Table 1. GDP Components by Expenditure

## Real GDP Expenditure & Growth Rate

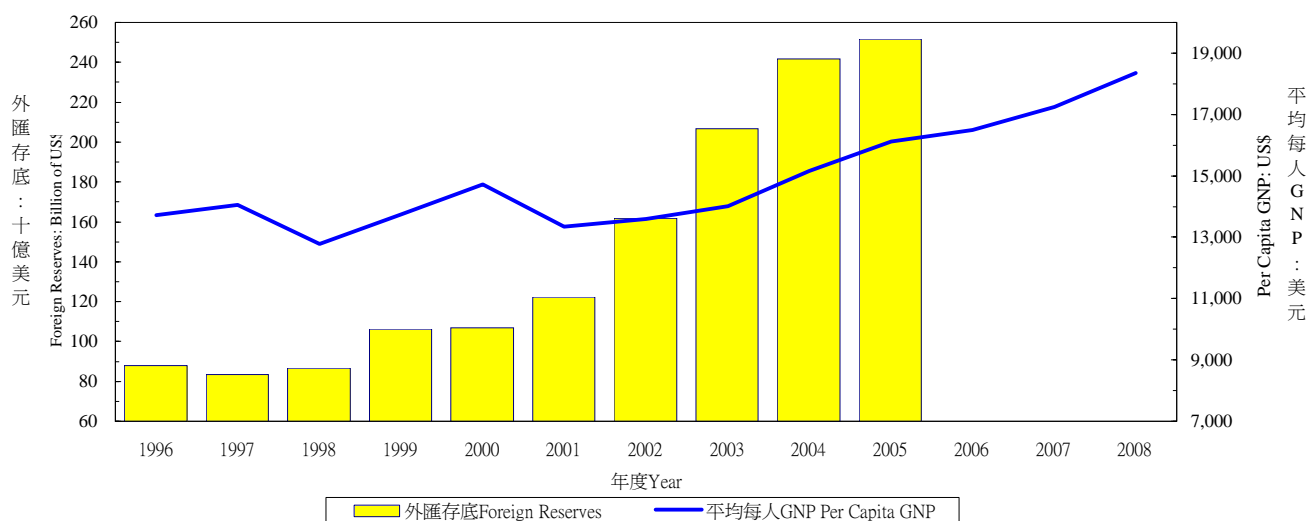


年與季 Year & Quarter	GDP 經濟成長率 Economic Growth Rate (%)	GDP (Bil. NT\$)	Private Consumption Expenditure		Private Spe. Gross Fixed Cap. Formation		Exports of Goods and Services		Imports of Goods and Services		Government Consumption Expenditure	
			GDP /GDP (%)	Annual Rate of Change (%)	GDP /GDP (%)	Annual Rate of Change (%)	GDP /GDP (%)	Annual Rate of Change (%)	GDP /GDP (%)	Annual Rate of Change (%)	GDP /GDP (%)	Annual Rate of Change (%)
1996	NA	7,945	58.52	9.14	13.49	7.81	45.82	6.75	42.56	6.02	15.12	15.87
1997	6.59	8,610	58.60	7.08	14.61	18.61	46.59	8.98	44.54	13.44	15.28	5.98
1998	4.55	9,238	58.85	6.19	15.84	13.24	46.26	2.60	45.22	6.63	15.16	3.65
1999	5.75	9,641	59.71	5.51	15.20	1.01	46.44	11.86	43.92	4.54	14.13	-4.33
2000	5.77	10,032	60.68	4.59	16.65	15.61	52.40	18.14	50.21	14.23	13.87	0.71
2001	-2.17	9,862	62.15	0.67	12.36	-26.83	48.89	-8.08	43.64	-13.51	14.24	0.53
2002	4.25	10,293	61.06	2.60	12.48	6.68	52.89	13.88	45.80	10.65	13.90	2.06
2003	3.43	10,520	60.39	1.48	12.70	3.65	57.03	10.38	49.69	8.08	13.87	0.57
2004	6.07	11,066	60.72	4.46	16.51	33.05	63.06	14.40	59.68	18.88	13.24	-0.54
2005	4.16	11,455	61.31	2.99	15.86	0.31	64.24	7.62	60.01	3.77	13.08	1.08
2006	4.89	11,890	60.41	1.76	16.13	2.96	69.85	10.37	64.17	5.16	12.64	-0.41
2007	5.46	12,558	59.56	2.93	16.46	5.07	72.61	7.22	65.76	3.28	12.21	1.27
2008	4.53	13,198	59.31	3.40	16.51	4.23	71.79	3.75	64.53	1.90	11.90	2.39
2006 4	4.07	3,119	56.52	2.43	16.15	10.87	70.60	2.95	62.47	1.05	12.53	0.02
2007 1	4.19	3,092	62.88	2.12	14.38	1.43	66.61	6.38	59.57	-0.45	13.06	-0.24
2	5.24	2,910	58.75	2.57	19.10	8.55	76.97	4.73	72.16	2.39	11.85	0.03
3	6.92	3,268	59.65	3.51	16.44	6.54	75.02	11.13	67.63	7.70	11.53	1.74
4	5.43	3,289	57.09	3.56	16.09	3.21	71.99	6.63	64.05	3.25	12.39	3.12
2008 1	5.53	3,265	63.05	4.02	14.39	3.72	66.33	4.97	59.84	3.07	12.73	3.35
2	4.92	3,067	58.61	3.36	18.91	3.08	76.76	5.48	70.75	2.23	11.56	2.48
3	3.84	3,411	59.55	3.21	16.64	4.63	72.90	1.27	65.56	0.05	11.34	2.56
4	3.90	3,456	56.17	3.00	16.28	5.40	71.44	3.50	62.44	2.46	11.97	1.43

### GDP

Source : DGBAS, Executive Yuan, "Quarterly National Economic Trends, Taiwan Area, ROC  
The Central Bank of China, Financial Statistics, Taiwan District, The Republic of China

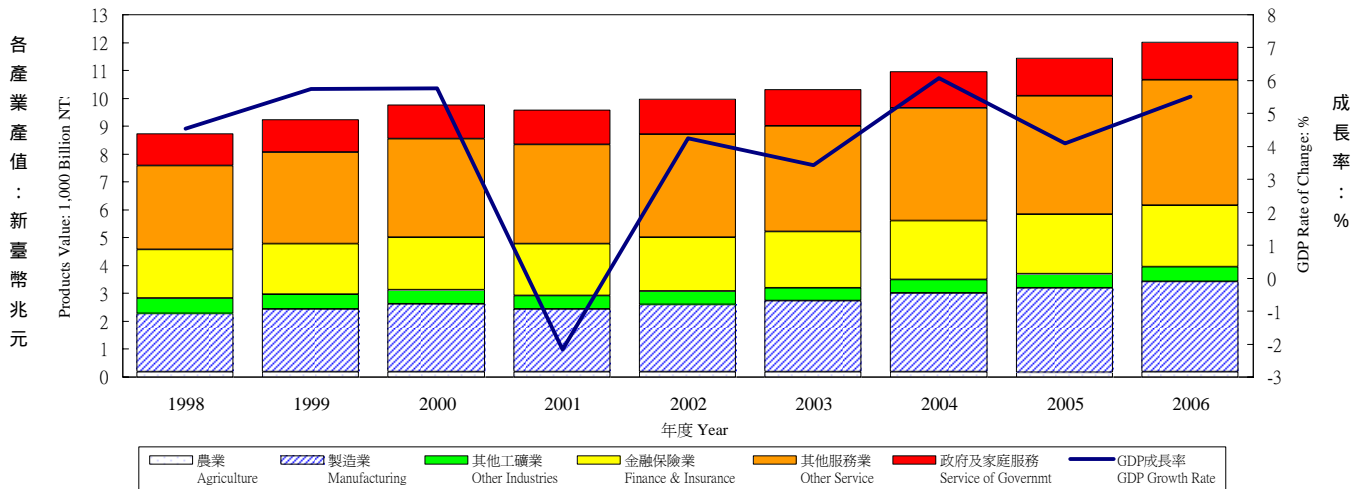
## GNP Total Foreign Reserves & Per Capita GNP



年與季 Year & Quarter	Public Enter. Gross Fixed Capita Formation		Government Gross Fixed Capita Formation		Increase in Stocks		Net Factor Income From Abroad		GNP ( ) Per Capita GNP (US\$)	( ) Total Foreign Reserves (Billion of US\$)
	GDP /GDP (%)	Annual Rate of Change (%)	GDP /GDP (%)	Annual Rate of Change (%)	GDP /GDP (%)	(1996 NT Mil (1996=100))	GDP /GDP (%)	Annual Rate of Change (%)		
1996	2.73	-0.20	6.19	0.42	0.68	51,347	1.38	-4.54	13,714	88.0
1997	2.37	-2.48	5.73	-0.29	1.36	115,254	1.04	-19.04	14,048	83.5
1998	2.40	4.49	5.42	-0.29	1.30	118,911	0.74	-24.87	12,773	86.6
1999	2.56	13.33	5.36	4.10	0.52	51,674	0.94	31.72	13,737	106.2
2000	2.33	-2.96	4.88	-4.05	-0.60	-58,262	1.39	52.36	14,721	106.7
2001	2.38	1.43	4.63	-6.42	-1.00	-98,959	1.95	37.74	13,348	122.2
2002	2.20	-1.23	3.88	-12.71	-0.61	-60,948	2.36	26.52	13,604	161.7
2003	2.08	-3.94	3.83	-1.26	-0.21	-19,224	3.13	35.95	14,012	206.6
2004	1.64	-18.15	3.72	-5.78	0.78	78,446	3.36	11.48	15,156	241.7
2005	1.79	16.20	3.63	-1.92	0.09	9,286	2.54	-23.32	16,113	251.8
2006	1.60	-7.48	3.44	-6.20	0.10	10,404	2.62	6.28	16,494	266.1
2007	1.64	4.96	3.29	-3.59	-0.01	-3,322	2.89	14.46	17,252	270.3
2008	1.69	7.76	3.21	-0.15	0.12	9,791	2.90	3.54	18,359	--
2006 4	2.23	-6.05	3.95	-9.17	0.49	11,021	2.48	-12.69	4,274	266.1
2007 1	1.37	20.89	2.51	-13.03	-1.24	-30,578	4.21	9.75	4,294	268.0
2	1.44	1.82	3.23	-6.87	0.81	17,896	3.29	38.09	3,981	266.1
3	1.49	0.51	3.35	-0.80	0.15	3,436	1.35	-8.88	4,409	262.9
4	2.20	2.23	4.03	2.66	0.26	5,924	2.81	15.00	4,568	270.3
2008 1	1.30	-1.03	2.58	4.09	-0.53	-13,400	4.41	8.05	4,614	--
2	1.51	9.09	3.21	2.16	0.20	4,659	2.83	-11.64	4,266	--
3	1.57	9.36	3.21	-2.13	0.35	8,264	1.87	42.06	4,696	--
4	2.33	10.81	3.82	-2.46	0.43	10,268	2.53	-5.61	4,783	--

# 表二：各業產值概況

## Table 2. GDP Components by Industry GDP各產業產值及成長率 GDP Products Value & Growth Rate



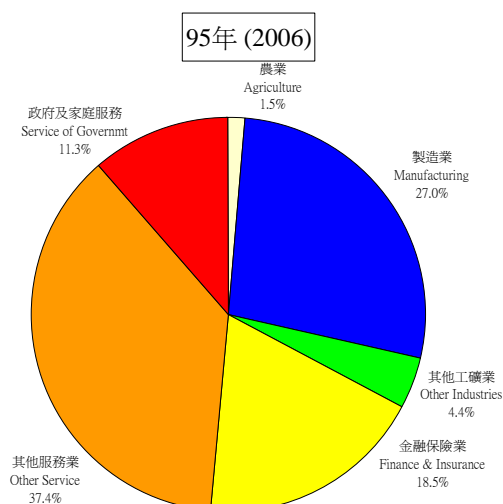
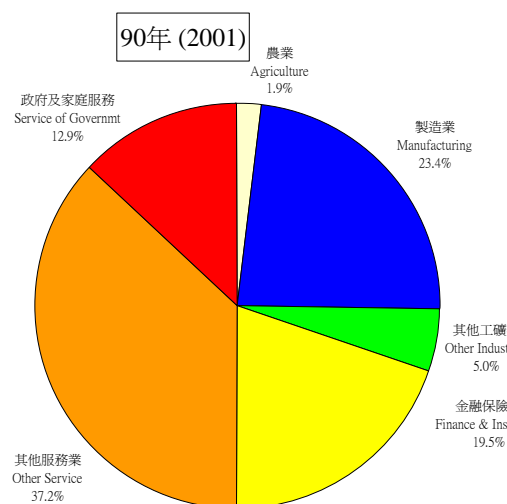
年與季 Year & Quarter	國內 生產毛額 GDP (新臺幣 十億元) 按90年價格 計算GDP (Bil. NTS)	GDP 成長率 GDP Rate of Change (%)	產業 Sector											
			農業 Agriculture Hunting Forestry & Fishing		合計 Sub Total		礦業 Mining & Quarring		製造業 Manufacturing		營造業 Construction		水電燃氣業 Electricity, Gas & Water	
			佔GDP /GDP (%)	年增率 Annual Rate of Change (%)	佔GDP /GDP (%)	年增率 Annual Rate of Change (%)	佔GDP /GDP (%)	年增率 Annual Rate of Change (%)	佔GDP /GDP (%)	年增率 Annual Rate of Change (%)	佔GDP /GDP (%)	年增率 Annual Rate of Change (%)	佔GDP /GDP (%)	年增率 Annual Rate of Change (%)
1998	9,013	4.55	1.99	-6.32	29.32	2.62	0.52	-5.88	23.31	3.15	3.53	-1.79	1.96	7.22
1999	9,531	5.75	1.93	2.73	29.21	5.38	0.45	-7.85	23.67	7.36	3.17	-5.07	1.92	4.09
2000	10,081	5.77	1.85	1.21	29.22	5.77	0.40	-6.52	24.02	7.33	2.86	-4.56	1.94	6.50
2001	9,862	-2.17	1.85	-1.95	27.62	-7.51	0.37	-10.24	22.73	-7.44	2.55	-12.58	1.97	-0.35
2002	10,281	4.25	1.86	4.74	28.05	5.88	0.36	1.46	23.41	7.38	2.37	-3.41	1.92	1.40
2003	10,634	3.43	1.80	-0.06	28.14	3.77	0.28	-19.14	23.80	5.15	2.16	-5.58	1.91	2.72
2004	11,279	6.07	1.63	-4.09	29.30	10.41	0.26	-2.80	25.01	11.49	2.16	5.95	1.87	3.91
2005	11,740	4.09	1.44	-8.07	29.99	6.57	0.24	-4.54	25.70	6.96	2.16	4.09	1.90	5.71
2006	12,387	5.51	1.45	6.09	30.43	7.04	0.20	-10.92	26.19	7.51	2.18	6.68	1.86	3.32
2006 4	3,113	6.89	1.52	-10.42	30.67	13.15	0.24	-3.92	26.43	14.62	2.12	3.50	1.88	7.61
2007 1	3,026	5.12	1.34	-2.97	29.49	7.83	0.23	0.06	25.39	8.93	2.14	1.03	1.73	2.29
2	2,979	5.07	1.51	1.76	29.54	8.59	0.18	-19.26	25.36	9.25	2.26	8.63	1.75	3.09
3	3,142	5.34	1.27	13.41	32.05	8.46	0.18	-10.35	27.62	8.73	2.16	10.61	2.09	4.81
4	3,240	4.07	1.65	12.68	30.55	3.65	0.20	-14.33	26.32	3.63	2.17	6.68	1.86	2.83
2008 1	3,152	4.19	1.28	-0.82	29.71	4.97	0.20	-11.94	25.63	5.19	2.14	4.25	1.74	4.97
2	3,135	5.24	1.50	4.21	30.28	7.86	0.22	25.96	26.10	8.33	2.26	5.05	1.71	2.82
3	3,360	6.92	1.21	1.68	33.00	10.10	0.19	9.75	28.75	11.30	2.06	2.34	1.99	2.20

資料來源：行政院主計處，中華民國臺灣地區國民經濟動向統計季報

註：國內生產毛額除整體產業、政府服務生產者、對家庭服務之民間非營利機構生產者，以及家事服務生產者之生產毛額外，尚有進口稅、加值型營業稅，以及設算銀行服務費等三個其他項未列入本表。

Source : DGBAS, Executive Yuan, "Quarterly National Economic Trends, Taiwan Area, ROC".

Note : Import duties, Value added taxes and imputed bank services charge, are not shown in the table.



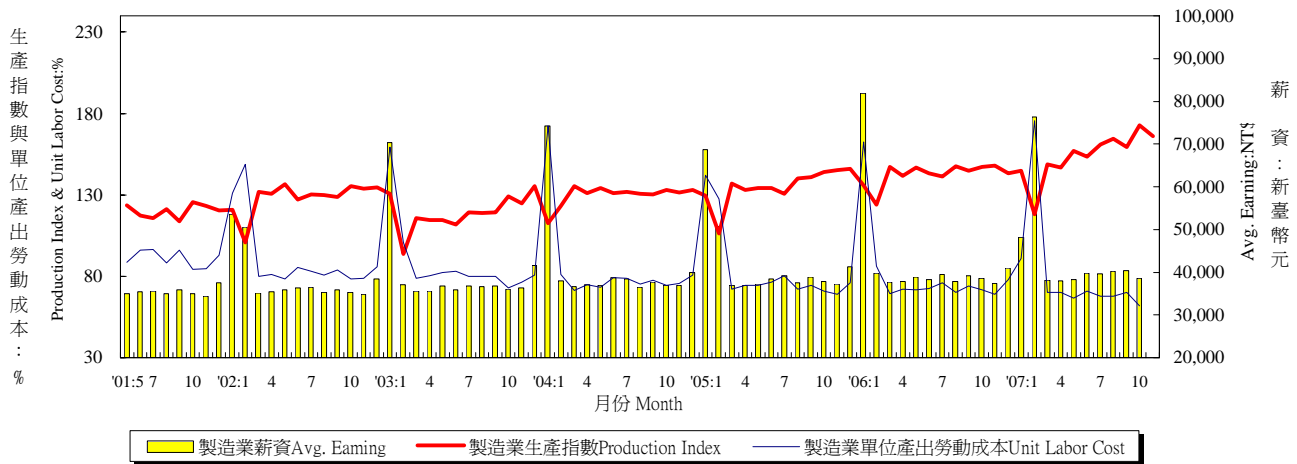
GDP

Note: Import duties, Value added taxes and imputed bank services charge are not included; therefore the percentage is different from the table.

Year & Quarter	Sector																			
	Services														Producers of Government Services		Producers of Private NonProfit Services to Households		Domestic Services of Households	
	Transportation Storage & Communication		Wholesale & Retail Trade Rest. & Hotel		Finance Insurance Real Estate		GDP /GDP ( )		Annual Rate of Change ( )		GDP /GDP ( )		Annual Rate of Change ( )							
															GDP /GDP ( )	Annual Rate of Change ( )	GDP /GDP ( )	Annual Rate of Change ( )	GDP /GDP ( )	Annual Rate of Change ( )
1998	52.91	6.27	5.24	10.52	18.06	6.67	19.28	3.79	9.70	12.44	11.39	2.89	0.51	48.99	0.71	3.48				
1999	53.54	7.00	5.85	18.06	18.25	6.85	18.94	3.92	10.13	10.45	11.10	3.09	0.36	-24.99	0.71	5.24				
2000	53.78	6.25	6.17	11.50	18.43	6.85	18.54	3.52	10.45	9.10	10.87	3.56	0.40	14.99	0.71	5.31				
2001	55.07	0.17	6.45	2.29	18.28	-2.99	18.97	0.10	11.36	6.37	11.38	2.47	0.42	4.25	0.75	3.63				
2002	54.73	3.60	6.53	5.49	18.09	3.15	18.78	3.17	11.40	4.52	11.15	2.15	0.44	8.31	0.74	3.09				
2003	54.73	3.44	6.56	3.95	17.90	2.38	19.01	4.70	11.33	2.87	11.13	3.24	0.39	-8.54	0.72	1.08				
2004	54.51	5.64	6.65	7.48	18.13	7.42	18.68	4.25	11.22	5.01	10.64	1.35	0.38	4.50	0.70	3.18				
2005	54.52	4.12	6.65	4.18	18.61	6.83	18.30	1.98	11.31	4.93	10.32	1.01	0.39	5.27	0.72	6.37				
2006	54.12	4.72	6.57	4.17	18.73	6.19	17.90	3.21	11.45	6.76	9.85	0.70	0.37	2.10	0.74	7.85				
2006 4	53.53	4.82	6.22	4.63	19.48	7.60	17.28	3.53	10.97	1.81	9.82	1.42	0.43	14.06	0.68	8.58				
2007 1	55.39	5.77	7.17	3.95	19.02	6.09	18.14	4.34	11.46	2.56	9.61	0.63	0.35	1.89	0.78	8.28				
2	54.59	2.87	6.68	4.70	18.41	6.26	18.75	2.42	11.37	1.05	10.08	0.50	0.42	17.04	0.77	9.67				
3	52.39	4.40	6.25	4.23	17.64	6.69	17.48	1.80	11.61	0.81	10.18	0.49	0.36	3.84	0.71	8.37				
4	54.17	5.30	6.21	3.84	19.80	5.79	17.32	4.31	11.34	2.86	9.55	1.19	0.37	-11.06	0.68	5.05				
2008 1	55.80	4.97	7.06	2.56	19.15	4.86	18.29	5.03	11.82	2.83	9.29	0.71	0.34	2.18	0.79	4.85				
2	54.49	5.05	6.52	2.63	18.31	4.67	18.80	5.52	11.57	0.60	9.65	0.79	0.34	-14.50	0.77	5.01				
3	52.25	6.63	5.98	2.36	17.55	6.39	17.73	8.47	11.69	1.07	9.60	0.84	0.34	2.22	0.70	4.92				



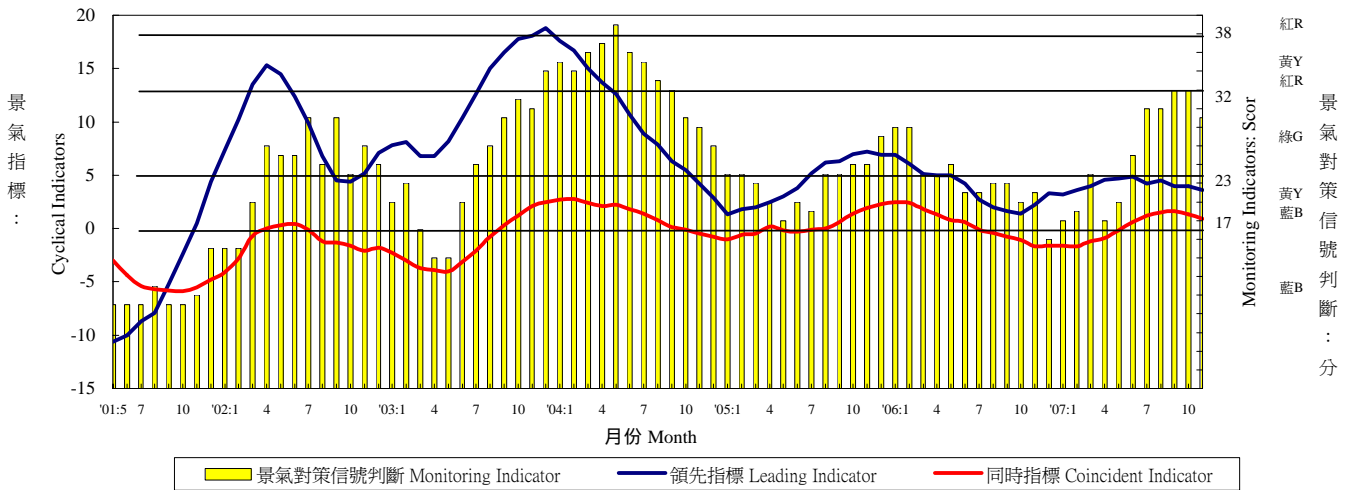
Table 3. Industry Indicators



年與月 Year & Month	( 90 =100) Mfg. Industrial Production (2001=100)		( 90 =100) Heavy Industry Production (2001=100)		( 90 =100) Light Industry Production (2001=100)		( 90 =100) Unit labor cost in Manufacturing (2001=100)		Average Earnings of Employees in Manufacturing	
	Index ( )	Annual Rate of Change ( )	Index ( )	Annual Rate of Change ( )	Index ( )	Annual Rate of Change ( )	Index ( )	Annual Rate of Change ( )	( ) Wages per Month (NT\$)	Annual Rate of Change ( )
1995	105.64	-1.08	95.45	9.57	100.85	-2.67	105.64	-1.08	32,555	5.69
1996	84.67	-19.85	75.50	-20.90	112.70	11.75	105.00	-0.61	33,911	4.17
1997	90.79	7.23	83.63	10.77	112.35	-0.31	103.70	-1.24	35,492	4.66
1998	93.68	3.18	88.36	5.66	109.30	-2.71	103.51	-0.18	36,546	2.97
1999	100.98	7.79	97.62	10.48	110.25	0.87	100.01	-3.38	37,882	3.66
2000	109.12	8.06	108.62	11.27	110.48	0.21	97.38	-2.63	39,080	3.16
2001	100.00	-8.36	100.00	-7.94	100.00	-9.49	100.00	2.69	38,586	-1.26
2002	109.39	9.39	113.73	13.73	97.46	-2.54	89.72	-10.28	38,565	-0.05
2003	117.46	7.38	124.64	9.59	97.67	0.22	87.17	-2.84	39,583	2.64
2004	129.85	10.54	140.89	13.03	99.43	1.80	83.46	-4.26	40,611	2.60
2005	135.05	4.01	148.92	5.70	96.84	-2.60	82.53	-1.11	41,751	2.81
2006	142.51	5.53	159.64	7.20	95.34	-1.55	80.57	-2.37	42,293	1.30
2006 12	143.11	-2.03	159.94	-1.51	96.73	-4.28	77.89	2.39	40,917	-0.85
2007 1	144.66	6.63	160.84	7.25	100.09	3.97	90.79	-44.07	48,146	-41.23
2	118.25	-4.73	134.18	-4.25	74.36	-7.06	175.44	103.01	76,293	91.83
3	148.61	0.91	166.44	1.80	99.50	-3.00	70.12	1.43	38,149	1.14
4	146.95	3.85	165.91	4.75	94.72	-0.26	70.27	-2.73	37,917	0.12
5	157.02	6.93	177.87	8.02	99.58	1.91	66.58	-7.18	38,258	-1.77
6	153.31	7.13	174.85	9.24	93.96	-2.51	70.99	-2.20	39,759	3.78
7	161.06	13.92	183.81	16.36	98.39	2.83	67.85	-10.96	39,663	0.31
8	164.36	11.29	186.85	12.95	102.39	3.64	67.57	-3.71	40,236	6.22
9	159.38	10.18	183.76	12.76	92.23	-2.11	70.03	-5.38	40,359	3.21
10	172.62	17.42	198.22	19.40	102.10	7.89	61.90	-13.58	38,581	0.00
11	166.17	12.40	190.30	14.22	99.71	3.70	--	--	--	--
1-11	153.85	8.00	174.82	9.53	96.09	0.92	--	--	--	--

Source : Department of Statistics, Ministry of Economic Affairs, "Industrial Production Statistics Monthly, Taiwan Area, ROC

Table 4. Cyclical Indicators

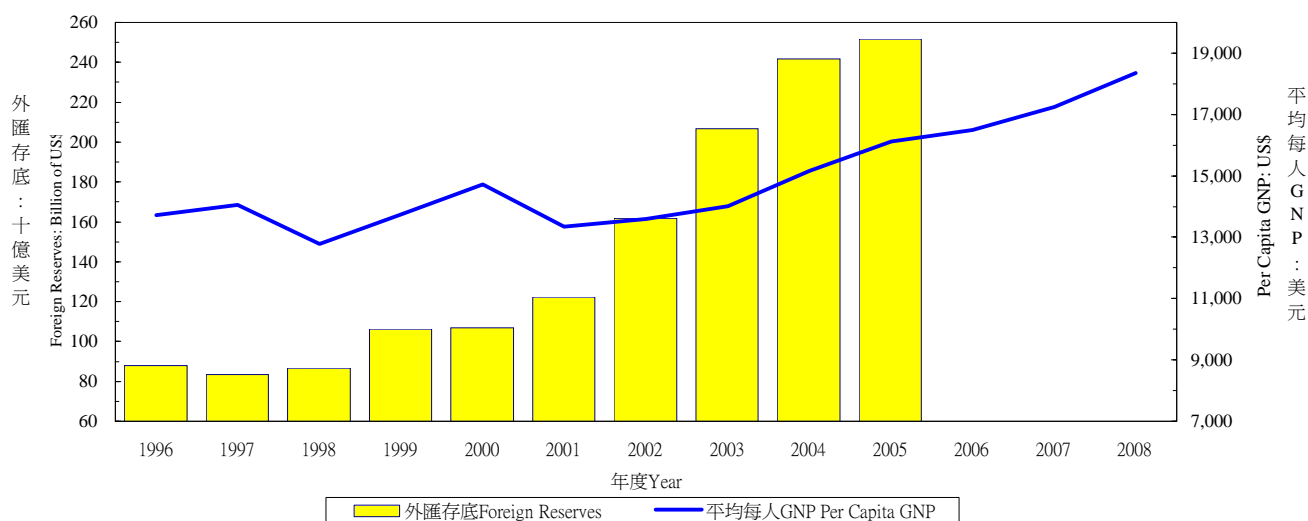


年與月 Year & Month	景氣指標 (85年=100) Domestic business indicators (1996=100)		景氣對策信號判斷 (分) Indicators (Score)		製造業設備 利用率 Utility ratio of manufacturing Capacity (%)	製造業存貨率 Ratio of inventor in manufacturing (1996=100)	失業率 Un-employment rates (%)
	領先指標 Leading	同時指標 Coincident					
1995	1.43	1.8	G	24	78.97	56.87	1.79
1996	4.62	-1.1	YB	20	78.25	70.84	2.60
1997	7.28	-0.8	G	27	78.70	65.18	2.72
1998	-1.11	-3.3	YB	20	78.84	68.48	2.69
1999	10.28	-0.1	YB	22	78.91	68.81	2.92
2000	1.38	7.3	G	26	80.35	64.55	2.99
2001	-7.40	-3.3	B	10	76.28	79.33	4.57
2002	9.27	-1.2	G	23	77.02	67.74	5.17
2003	12.24	-1.4	G	23	78.32	63.34	4.99
2004	10.17	1.2	YR	33	80.08	54.73	4.44
2005	4.43	0.3	YB	22	80.13	64.74	4.13
2006	3.79	0.5	YB	22	80.29	62.15	3.91
2006 12	3.3	-1.6	B	16	80.4	62.7	3.81
2007 1	3.2	-1.6	YB	18	80.4	61.6	3.79
2	3.6	-1.7	YB	19	76.8	75.9	3.78
3	4.0	-1.2	G	23	80.9	57.6	3.94
4	4.6	-0.9	YB	18	80.5	56.2	3.83
5	4.7	-0.2	YB	20	81.2	55.6	3.87
6	4.9	0.6	G	25	81.0	55.0	3.96
7	4.2	1.2	G	30	81.3	-	4.03
8	4.5	1.5	G	30	81.8	-	4.09
9	4.0	1.6	YR	32	-	-	3.99
10	4.0	1.3	YR	32	-	-	3.92
11	3.6	0.9	G	29	-	-	3.87

Source : Council for Economic Planning & Development, ROC, "Business Indicators of Taiwan."  
Dept. of Statistics, Ministry of Economic Affairs, "Domestic & Foreign Express Report of Economic Statistics Indicators".

Note : R:Red,overheating; G:Green,stable; B:Blue,recession; YR:between Y & R; YB:between Y & B

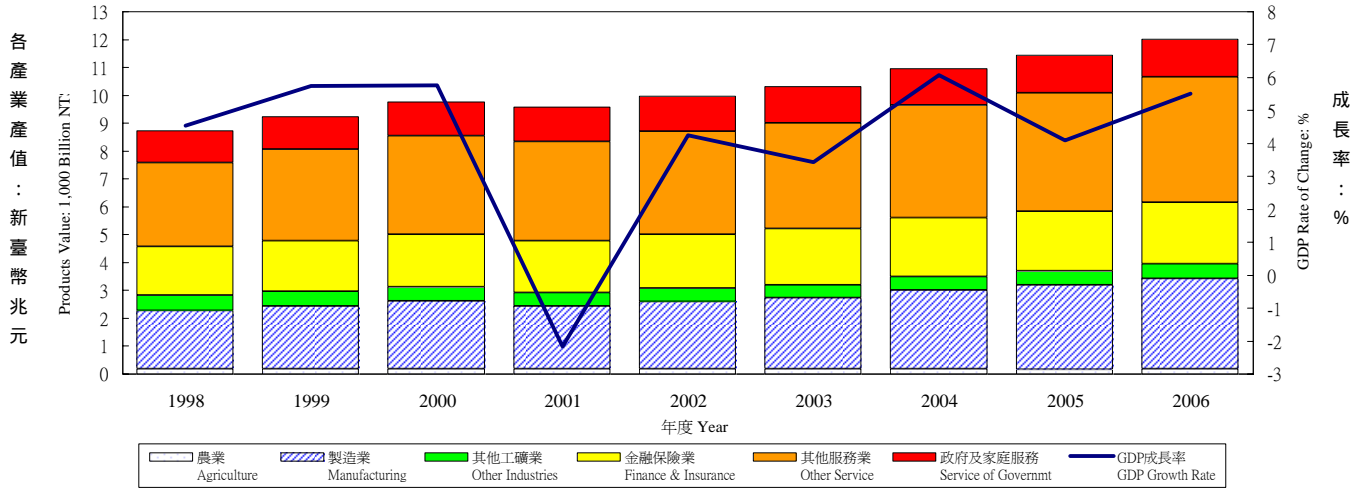
## GNP Total Foreign Reserves & Per Capita GNP



年與季 Year & Quarter	Public Enter. Gross Fixed Capita Formation		Government Gross Fixed Capita Formation		Increase in Stocks		Net Factor Income From Abroad		GNP ( ) Per Capita GNP (US\$)	( ) Total Foreign Reserves (Billion of US\$)
	GDP /GDP (%)	Annual Rate of Change (%)	GDP /GDP (%)	Annual Rate of Change (%)	GDP /GDP (%)	(1996 NT Mil (1996=100))	GDP /GDP (%)	Annual Rate of Change (%)		
1996	2.73	-0.20	6.19	0.42	0.68	51,347	1.38	-4.54	13,714	88.0
1997	2.37	-2.48	5.73	-0.29	1.36	115,254	1.04	-19.04	14,048	83.5
1998	2.40	4.49	5.42	-0.29	1.30	118,911	0.74	-24.87	12,773	86.6
1999	2.56	13.33	5.36	4.10	0.52	51,674	0.94	31.72	13,737	106.2
2000	2.33	-2.96	4.88	-4.05	-0.60	-58,262	1.39	52.36	14,721	106.7
2001	2.38	1.43	4.63	-6.42	-1.00	-98,959	1.95	37.74	13,348	122.2
2002	2.20	-1.23	3.88	-12.71	-0.61	-60,948	2.36	26.52	13,604	161.7
2003	2.08	-3.94	3.83	-1.26	-0.21	-19,224	3.13	35.95	14,012	206.6
2004	1.64	-18.15	3.72	-5.78	0.78	78,446	3.36	11.48	15,156	241.7
2005	1.79	16.20	3.63	-1.92	0.09	9,286	2.54	-23.32	16,113	251.8
2006	1.60	-7.48	3.44	-6.20	0.10	10,404	2.62	6.28	16,494	266.1
2007	1.64	4.96	3.29	-3.59	-0.01	-3,322	2.89	14.46	17,252	270.3
2008	1.69	7.76	3.21	-0.15	0.12	9,791	2.90	3.54	18,359	--
2006 4	2.23	-6.05	3.95	-9.17	0.49	11,021	2.48	-12.69	4,274	266.1
2007 1	1.37	20.89	2.51	-13.03	-1.24	-30,578	4.21	9.75	4,294	268.0
2007 2	1.44	1.82	3.23	-6.87	0.81	17,896	3.29	38.09	3,981	266.1
2007 3	1.49	0.51	3.35	-0.80	0.15	3,436	1.35	-8.88	4,409	262.9
2007 4	2.20	2.23	4.03	2.66	0.26	5,924	2.81	15.00	4,568	270.3
2008 1	1.30	-1.03	2.58	4.09	-0.53	-13,400	4.41	8.05	4,614	--
2008 2	1.51	9.09	3.21	2.16	0.20	4,659	2.83	-11.64	4,266	--
2008 3	1.57	9.36	3.21	-2.13	0.35	8,264	1.87	42.06	4,696	--
2008 4	2.33	10.81	3.82	-2.46	0.43	10,268	2.53	-5.61	4,783	--

# 表二：各業產值概況

## Table 2. GDP Components by Industry GDP各產業產值及成長率 GDP Products Value & Growth Rate



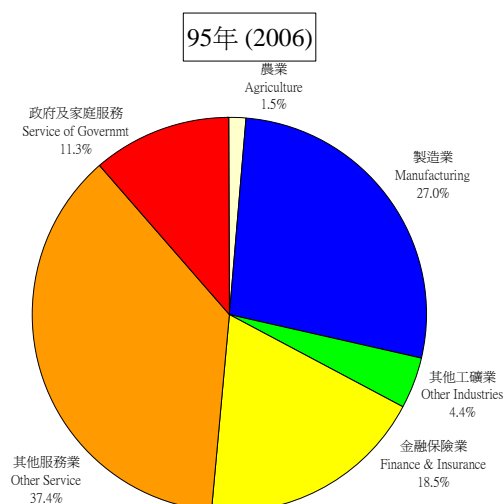
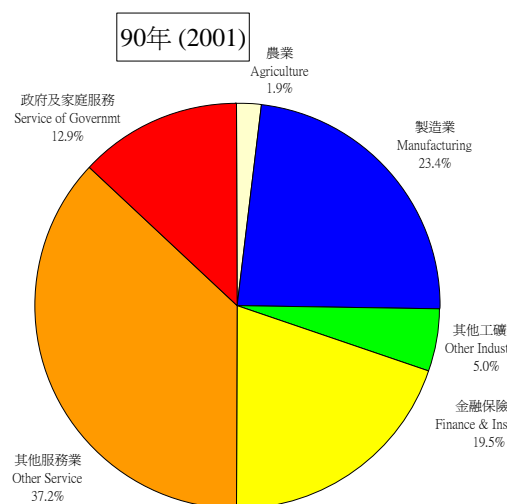
年與季 Year & Quarter	國內 生產毛額 GDP (新臺幣 十億元) 按90年價格 計算GDP (Bil. NTS)	GDP 成長率 GDP Rate of Change (%)	產業 Sector											
			農業 Agriculture Hunting Forestry & Fishing		合計 Sub Total		礦業 Mining & Quarring		製造業 Manufacturing		營造業 Construction		水電燃氣業 Electricity, Gas & Water	
			佔GDP /GDP (%)	年增率 Annual Rate of Change (%)	佔GDP /GDP (%)	年增率 Annual Rate of Change (%)	佔GDP /GDP (%)	年增率 Annual Rate of Change (%)	佔GDP /GDP (%)	年增率 Annual Rate of Change (%)	佔GDP /GDP (%)	年增率 Annual Rate of Change (%)	佔GDP /GDP (%)	年增率 Annual Rate of Change (%)
			佔GDP /GDP (%)	年增率 Annual Rate of Change (%)	佔GDP /GDP (%)	年增率 Annual Rate of Change (%)	佔GDP /GDP (%)	年增率 Annual Rate of Change (%)	佔GDP /GDP (%)	年增率 Annual Rate of Change (%)	佔GDP /GDP (%)	年增率 Annual Rate of Change (%)	佔GDP /GDP (%)	年增率 Annual Rate of Change (%)
1998	9,013	4.55	1.99	-6.32	29.32	2.62	0.52	-5.88	23.31	3.15	3.53	-1.79	1.96	7.22
1999	9,531	5.75	1.93	2.73	29.21	5.38	0.45	-7.85	23.67	7.36	3.17	-5.07	1.92	4.09
2000	10,081	5.77	1.85	1.21	29.22	5.77	0.40	-6.52	24.02	7.33	2.86	-4.56	1.94	6.50
2001	9,862	-2.17	1.85	-1.95	27.62	-7.51	0.37	-10.24	22.73	-7.44	2.55	-12.58	1.97	-0.35
2002	10,281	4.25	1.86	4.74	28.05	5.88	0.36	1.46	23.41	7.38	2.37	-3.41	1.92	1.40
2003	10,634	3.43	1.80	-0.06	28.14	3.77	0.28	-19.14	23.80	5.15	2.16	-5.58	1.91	2.72
2004	11,279	6.07	1.63	-4.09	29.30	10.41	0.26	-2.80	25.01	11.49	2.16	5.95	1.87	3.91
2005	11,740	4.09	1.44	-8.07	29.99	6.57	0.24	-4.54	25.70	6.96	2.16	4.09	1.90	5.71
2006	12,387	5.51	1.45	6.09	30.43	7.04	0.20	-10.92	26.19	7.51	2.18	6.68	1.86	3.32
2006 4	3,113	6.89	1.52	-10.42	30.67	13.15	0.24	-3.92	26.43	14.62	2.12	3.50	1.88	7.61
2007 1	3,026	5.12	1.34	-2.97	29.49	7.83	0.23	0.06	25.39	8.93	2.14	1.03	1.73	2.29
2	2,979	5.07	1.51	1.76	29.54	8.59	0.18	-19.26	25.36	9.25	2.26	8.63	1.75	3.09
3	3,142	5.34	1.27	13.41	32.05	8.46	0.18	-10.35	27.62	8.73	2.16	10.61	2.09	4.81
4	3,240	4.07	1.65	12.68	30.55	3.65	0.20	-14.33	26.32	3.63	2.17	6.68	1.86	2.83
2008 1	3,152	4.19	1.28	-0.82	29.71	4.97	0.20	-11.94	25.63	5.19	2.14	4.25	1.74	4.97
2	3,135	5.24	1.50	4.21	30.28	7.86	0.22	25.96	26.10	8.33	2.26	5.05	1.71	2.82
3	3,360	6.92	1.21	1.68	33.00	10.10	0.19	9.75	28.75	11.30	2.06	2.34	1.99	2.20

資料來源：行政院主計處，中華民國臺灣地區國民經濟動向統計季報

註：國內生產毛額除整體產業、政府服務生產者、對家庭服務之民間非營利機構生產者，以及家事服務生產者之生產毛額外，尚有進口稅、加值型營業稅，以及設算銀行服務費等三個其他項未列入本表。

Source : DGBAS, Executive Yuan, "Quarterly National Economic Trends, Taiwan Area, ROC".

Note : Import duties, Value added taxes and imputed bank services charge, are not shown in the table.

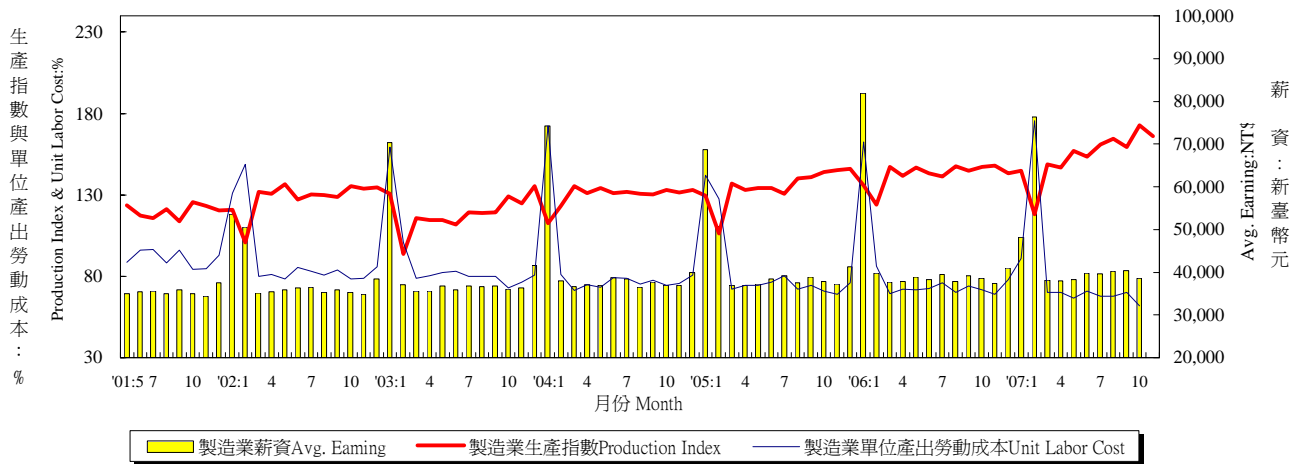


GDP

Note: Import duties, Value added taxes and imputed bank services charge are not included; therefore the percentage is different from the table.

Year & Quarter	Sector															
	Services															
			Transportation Storage & Communication		Wholesale & Retail Trade Rest. & Hotel		Finance Insurance Real Estate				Producers of Government Services		Producers of Private NonProfit Services to Households		Domestic Services of Households	
	GDP /GDP ( )	Annual Rate of Change ( )	GDP /GDP ( )	Annual Rate of Change ( )	GDP /GDP ( )	Annual Rate of Change ( )	GDP /GDP ( )	Annual Rate of Change ( )	GDP /GDP ( )	Annual Rate of Change ( )	GDP /GDP ( )	Annual Rate of Change ( )	GDP /GDP ( )	Annual Rate of Change ( )	GDP /GDP ( )	Annual Rate of Change ( )
1998	52.91	6.27	5.24	10.52	18.06	6.67	19.28	3.79	9.70	12.44	11.39	2.89	0.51	48.99	0.71	3.48
1999	53.54	7.00	5.85	18.06	18.25	6.85	18.94	3.92	10.13	10.45	11.10	3.09	0.36	-24.99	0.71	5.24
2000	53.78	6.25	6.17	11.50	18.43	6.85	18.54	3.52	10.45	9.10	10.87	3.56	0.40	14.99	0.71	5.31
2001	55.07	0.17	6.45	2.29	18.28	-2.99	18.97	0.10	11.36	6.37	11.38	2.47	0.42	4.25	0.75	3.63
2002	54.73	3.60	6.53	5.49	18.09	3.15	18.78	3.17	11.40	4.52	11.15	2.15	0.44	8.31	0.74	3.09
2003	54.73	3.44	6.56	3.95	17.90	2.38	19.01	4.70	11.33	2.87	11.13	3.24	0.39	-8.54	0.72	1.08
2004	54.51	5.64	6.65	7.48	18.13	7.42	18.68	4.25	11.22	5.01	10.64	1.35	0.38	4.50	0.70	3.18
2005	54.52	4.12	6.65	4.18	18.61	6.83	18.30	1.98	11.31	4.93	10.32	1.01	0.39	5.27	0.72	6.37
2006	54.12	4.72	6.57	4.17	18.73	6.19	17.90	3.21	11.45	6.76	9.85	0.70	0.37	2.10	0.74	7.85
2006 4	53.53	4.82	6.22	4.63	19.48	7.60	17.28	3.53	10.97	1.81	9.82	1.42	0.43	14.06	0.68	8.58
2007 1	55.39	5.77	7.17	3.95	19.02	6.09	18.14	4.34	11.46	2.56	9.61	0.63	0.35	1.89	0.78	8.28
2007 2	54.59	2.87	6.68	4.70	18.41	6.26	18.75	2.42	11.37	1.05	10.08	0.50	0.42	17.04	0.77	9.67
2007 3	52.39	4.40	6.25	4.23	17.64	6.69	17.48	1.80	11.61	0.81	10.18	0.49	0.36	3.84	0.71	8.37
2007 4	54.17	5.30	6.21	3.84	19.80	5.79	17.32	4.31	11.34	2.86	9.55	1.19	0.37	-11.06	0.68	5.05
2008 1	55.80	4.97	7.06	2.56	19.15	4.86	18.29	5.03	11.82	2.83	9.29	0.71	0.34	2.18	0.79	4.85
2008 2	54.49	5.05	6.52	2.63	18.31	4.67	18.80	5.52	11.57	0.60	9.65	0.79	0.34	-14.50	0.77	5.01
2008 3	52.25	6.63	5.98	2.36	17.55	6.39	17.73	8.47	11.69	1.07	9.60	0.84	0.34	2.22	0.70	4.92

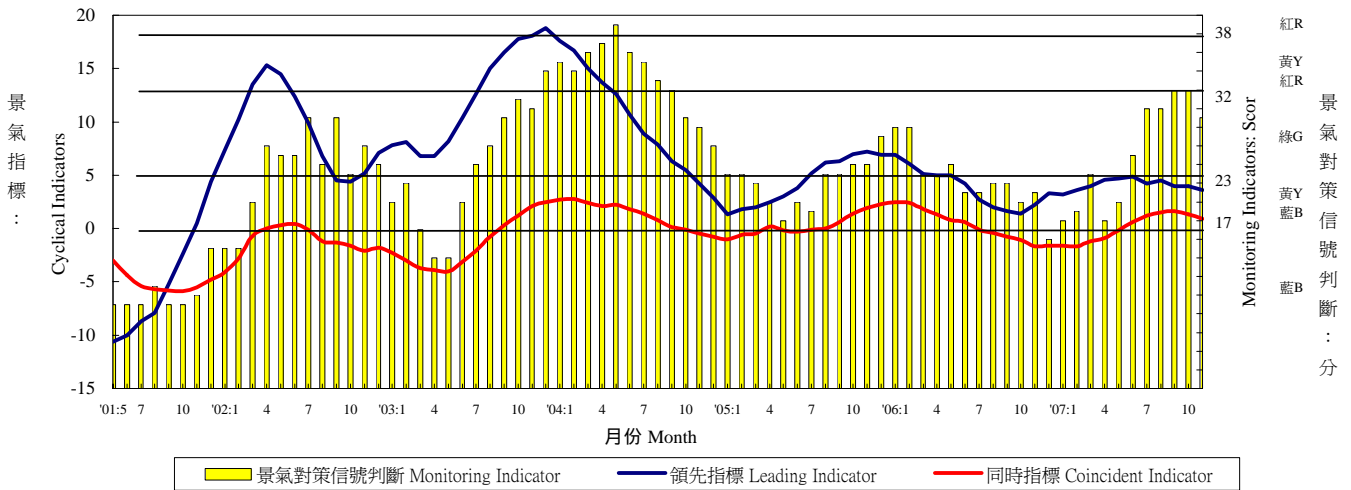
Table 3. Industry Indicators



年與月 Year & Month	( 90 =100) Mfg. Industrial Production (2001=100)		( 90 =100) Heavy Industry Production (2001=100)		( 90 =100) Light Industry Production (2001=100)		( 90 =100) Unit labor cost in Manufacturing (2001=100)		Average Earnings of Employees in Manufacturing	
	Index ( )	Annual Rate of Change ( )	Index ( )	Annual Rate of Change ( )	Index ( )	Annual Rate of Change ( )	Index ( )	Annual Rate of Change ( )	( ) Wages per Month (NT\$)	Annual Rate of Change ( )
1995	105.64	-1.08	95.45	9.57	100.85	-2.67	105.64	-1.08	32,555	5.69
1996	84.67	-19.85	75.50	-20.90	112.70	11.75	105.00	-0.61	33,911	4.17
1997	90.79	7.23	83.63	10.77	112.35	-0.31	103.70	-1.24	35,492	4.66
1998	93.68	3.18	88.36	5.66	109.30	-2.71	103.51	-0.18	36,546	2.97
1999	100.98	7.79	97.62	10.48	110.25	0.87	100.01	-3.38	37,882	3.66
2000	109.12	8.06	108.62	11.27	110.48	0.21	97.38	-2.63	39,080	3.16
2001	100.00	-8.36	100.00	-7.94	100.00	-9.49	100.00	2.69	38,586	-1.26
2002	109.39	9.39	113.73	13.73	97.46	-2.54	89.72	-10.28	38,565	-0.05
2003	117.46	7.38	124.64	9.59	97.67	0.22	87.17	-2.84	39,583	2.64
2004	129.85	10.54	140.89	13.03	99.43	1.80	83.46	-4.26	40,611	2.60
2005	135.05	4.01	148.92	5.70	96.84	-2.60	82.53	-1.11	41,751	2.81
2006	142.51	5.53	159.64	7.20	95.34	-1.55	80.57	-2.37	42,293	1.30
2006 12	143.11	-2.03	159.94	-1.51	96.73	-4.28	77.89	2.39	40,917	-0.85
2007 1	144.66	6.63	160.84	7.25	100.09	3.97	90.79	-44.07	48,146	-41.23
2	118.25	-4.73	134.18	-4.25	74.36	-7.06	175.44	103.01	76,293	91.83
3	148.61	0.91	166.44	1.80	99.50	-3.00	70.12	1.43	38,149	1.14
4	146.95	3.85	165.91	4.75	94.72	-0.26	70.27	-2.73	37,917	0.12
5	157.02	6.93	177.87	8.02	99.58	1.91	66.58	-7.18	38,258	-1.77
6	153.31	7.13	174.85	9.24	93.96	-2.51	70.99	-2.20	39,759	3.78
7	161.06	13.92	183.81	16.36	98.39	2.83	67.85	-10.96	39,663	0.31
8	164.36	11.29	186.85	12.95	102.39	3.64	67.57	-3.71	40,236	6.22
9	159.38	10.18	183.76	12.76	92.23	-2.11	70.03	-5.38	40,359	3.21
10	172.62	17.42	198.22	19.40	102.10	7.89	61.90	-13.58	38,581	0.00
11	166.17	12.40	190.30	14.22	99.71	3.70	--	--	--	--
1-11	153.85	8.00	174.82	9.53	96.09	0.92	--	--	--	--

Source : Department of Statistics, Ministry of Economic Affairs, "Industrial Production Statistics Monthly, Taiwan Area, ROC

Table 4. Cyclical Indicators



年 與 月 Year & Month	景氣指標 (85年=100) Domestic business indicators (1996=100)		景氣對策信號判斷 (分) Indicators (Score)		製造業設備 利用率 Utility ratio of manufacturing Capacity (%)	製造業存貨率 Ratio of inventor in manufacturing (1996=100)	失業率 Un-employment rates (%)
	領先指標 Leading	同時指標 Coincident					
1995	1.43	1.8	G	24	78.97	56.87	1.79
1996	4.62	-1.1	YB	20	78.25	70.84	2.60
1997	7.28	-0.8	G	27	78.70	65.18	2.72
1998	-1.11	-3.3	YB	20	78.84	68.48	2.69
1999	10.28	-0.1	YB	22	78.91	68.81	2.92
2000	1.38	7.3	G	26	80.35	64.55	2.99
2001	-7.40	-3.3	B	10	76.28	79.33	4.57
2002	9.27	-1.2	G	23	77.02	67.74	5.17
2003	12.24	-1.4	G	23	78.32	63.34	4.99
2004	10.17	1.2	YR	33	80.08	54.73	4.44
2005	4.43	0.3	YB	22	80.13	64.74	4.13
2006	3.79	0.5	YB	22	80.29	62.15	3.91
2006 12	3.3	-1.6	B	16	80.4	62.7	3.81
2007 1	3.2	-1.6	YB	18	80.4	61.6	3.79
2	3.6	-1.7	YB	19	76.8	75.9	3.78
3	4.0	-1.2	G	23	80.9	57.6	3.94
4	4.6	-0.9	YB	18	80.5	56.2	3.83
5	4.7	-0.2	YB	20	81.2	55.6	3.87
6	4.9	0.6	G	25	81.0	55.0	3.96
7	4.2	1.2	G	30	81.3	-	4.03
8	4.5	1.5	G	30	81.8	-	4.09
9	4.0	1.6	YR	32	-	-	3.99
10	4.0	1.3	YR	32	-	-	3.92
11	3.6	0.9	G	29	-	-	3.87

Source : Council for Economic Planning & Development, ROC, "Business Indicators of Taiwan."  
 Dept. of Statistics, Ministry of Economic Affairs, "Domestic & Foreign Express Report of Economic Statistics Indicators".  
 Note : R:Red,overheating; G:Green,stable; B:Blue,recession; YR:between Y & R; YB:between Y & B







