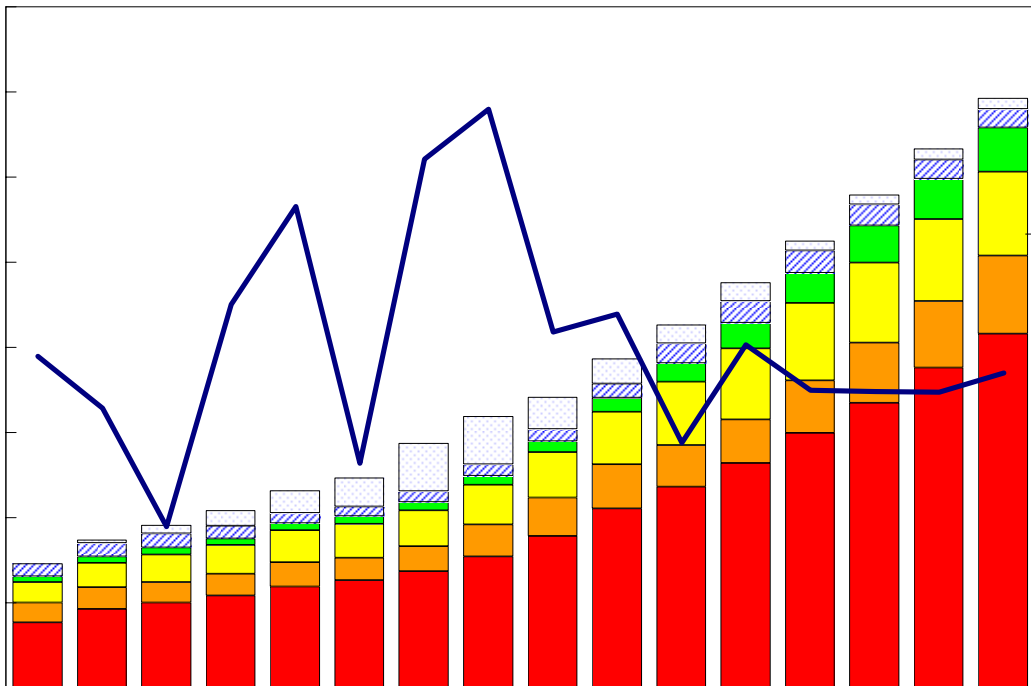


臺灣重要經濟變動指標

Major Economic Indicators for Taiwan



中華經濟研究院

中華民國九十七年五月

Chung-Hua Institution for Economic Research

May 2008

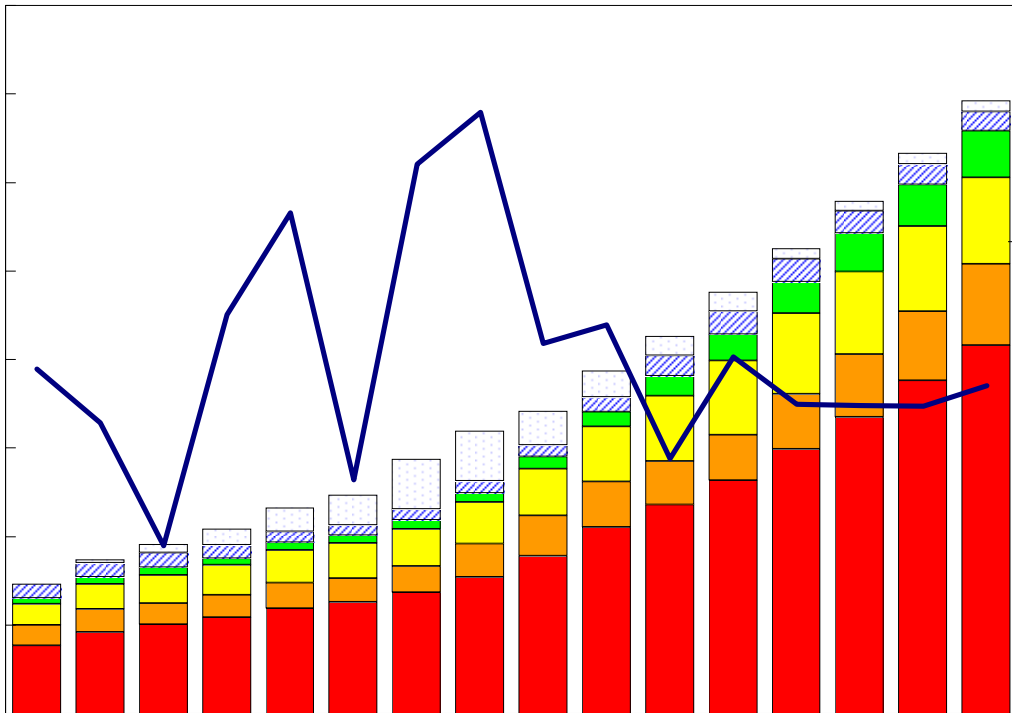
目次

Index

臺灣經濟預測.....I	Taiwan's Macroeconomic Forecasts.....I
表一：主要總體經濟指標.....2-3	Table 1 : GDP Components by Expenditure.....2-3
表二：各業產值概況.....4-5	Table 2 : GDP Components by Industry.....4-5
表三：生產概況.....6	Table 3 : Industry Indicators.....6
表四：景氣概況.....7	Table 4 : Cyclical Indicators.....7
表五：物價與金融概況.....8-9	Table 5 : Prices and Financial Situation.....8-9
表六：臺灣進出口貿易.....10	Table 6 : Foreign Trade Values.....10
表七：臺灣對美國之進出口狀況.....11	Table 7 : Trade with the United States11
表八：臺灣對日本之進出口狀況.....12	Table 8 : Trade with Japan.....12
表九：臺灣對德國之進出口狀況.....13	Table 9 : Trade with Germany.....13
表十：臺灣對香港之進出口狀況.....14	Table 10 : Trade with Hong Kong14
表十一：兩岸經貿.....15	Table 11 : Trade across the Taiwan Straits.....15

臺灣重要經濟變動指標

Major Economic Indicators for Taiwan



經濟展望中心 編製

The Center for Economic Forecasting

臺灣經濟預測

Taiwan's Macroeconomic Forecasts

	2008年季預測				2007年	2008年	2009年
	Year 2008 Quarterly (f)				Annually		
	第1季	第2季	第3季	第4季	實際值	預測值	預測值
	Q1	Q2	Q3	Q4	2007(r)	2008(f)	2009(f)
GDP, GNP及其組成, 新臺幣十億元(2001年基期), GDP, GNP and Major Components, Billions of 2001 NT Dollars							
實質GDP, Real GDP	3,350.28	3,273.74	3,497.45	3,582.25	13,092.30	13,703.72	14,447.23
年變動率, yoy(%)	6.28	4.42	4.15	3.93	5.70	4.67	5.43
實質GNP, Real GNP	3,502.98	3,380.65	3,562.35	3,697.44	13,448.81	14,143.43	14,970.06
年變動率, yoy(%)	6.87	4.78	4.79	4.29	6.01	5.16	5.84
每人平均GNP, per capita GNP	4,802.77	4,540.42	5,007.65	5,173.85	17,299.74	19,524.69	21,157.70
年變動率, yoy(%)	11.83	14.11	13.77	11.88	4.95	12.86	8.36
民間消費, Private Consumption	1,957.77	1,717.12	1,931.80	1,798.08	7,168.64	7,404.76	7,695.59
年變動率, yoy(%)	3.12	2.96	3.52	3.56	2.61	3.29	3.93
固定資本形成, Total Fixed Investment	518.06	652.67	670.02	706.13	2,445.41	2,546.88	2,685.54
年變動率, yoy(%)	3.20	2.91	3.63	6.56	2.39	4.15	5.44
民間投資, Private Fixed Investment	418.93	534.50	534.29	524.22	1,914.05	2,011.93	2,161.61
年變動率, yoy(%)	4.25	3.12	4.56	8.56	3.39	5.11	7.44
財貨與服務之出口, Exports, gds+serv	2,267.71	2,363.65	2,377.96	2,512.37	8,962.23	9,521.69	10,125.74
年變動率, yoy(%)	10.23	8.14	3.63	3.62	8.83	6.24	6.34
財貨與服務之進口, Imports, gds+serv	1,702.96	1,829.52	1,873.04	1,865.86	6,940.57	7,271.39	7,568.85
年變動率, yoy(%)	7.26	6.00	2.44	3.75	3.96	4.77	4.09
其它總體經濟變數, Other Macroeconomic Variables							
海關出口(fob, 億美元), Merchandise Export(fob, US \$bn)	640.48	670.17	694.98	708.09	2,467.23	2,713.72	2,910.69
年變動率, yoy(%)	17.64	12.66	7.29	4.11	10.14	9.99	7.26
海關進口(cif, 億美元), Merchandise Import (cif, US \$bn)	606.47	662.44	664.63	638.14	2,193.47	2,571.67	2,771.85
年變動率, yoy(%)	25.89	19.96	14.81	9.91	8.21	17.24	7.78
GDP平減指數, GDP Deflator (2001=100)	98.43	93.22	97.39	96.45	96.12	96.37	96.89
年變動率, yoy(%)	0.36	0.42	0.21	0.06	0.17	0.26	0.54
躉售物價指數, Wholesale Price Index (2006=100)	110.71	111.95	113.51	112.48	106.46	112.16	115.94
年變動率, yoy(%)	8.61	5.42	5.36	2.26	6.46	5.35	3.37
消費者物價指數, Consumer Price Index (2006=100)	103.43	104.23	105.07	105.21	101.80	104.48	106.34
年變動率, yoy(%)	3.59	3.53	2.89	0.62	1.80	2.64	1.78
M2貨幣存量(日平均), Money Stock (M2)	26,726.59	27,113.46	27,101.11	27,323.13	26,122.73	27,066.07	28,264.65
年變動率, yoy(%)	2.26	3.42	3.77	5.00	4.25	3.61	4.43
臺幣兌美元匯率(新台幣/美元), Exchange Rate(NT\$/US\$)	31.53	30.49	30.32	30.17	32.84	30.63	30.02
31-90天期商業本票利率, 31-90 day Commercial Paper Rate	2.10	2.15	2.24	2.31	1.90	2.20	2.40
失業率(%), Unemployment Rate(%)	3.84	3.83	4.00	3.82	3.91	3.87	3.82

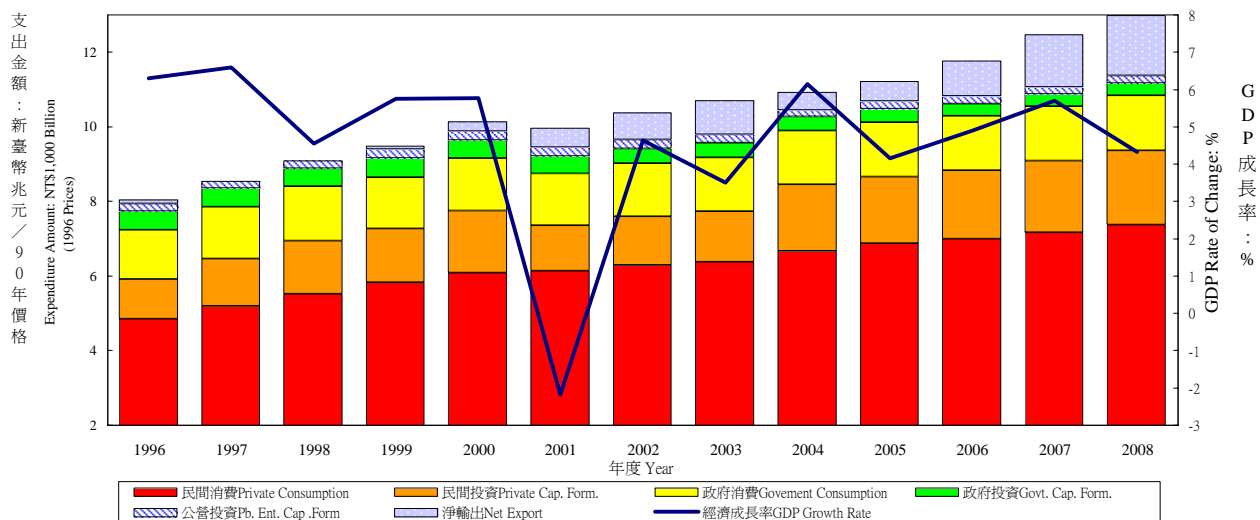
資料來源: 中華經濟研究院, 經濟展望中心, 2008年4月17日。

Source: CEF, CIER, Apr. 17, 2008.

表一：主要總體經濟指標

Table 1. GDP Components by Expenditure

實質GDP各需求支出及成長率 Real GDP Expenditure & Growth Rate



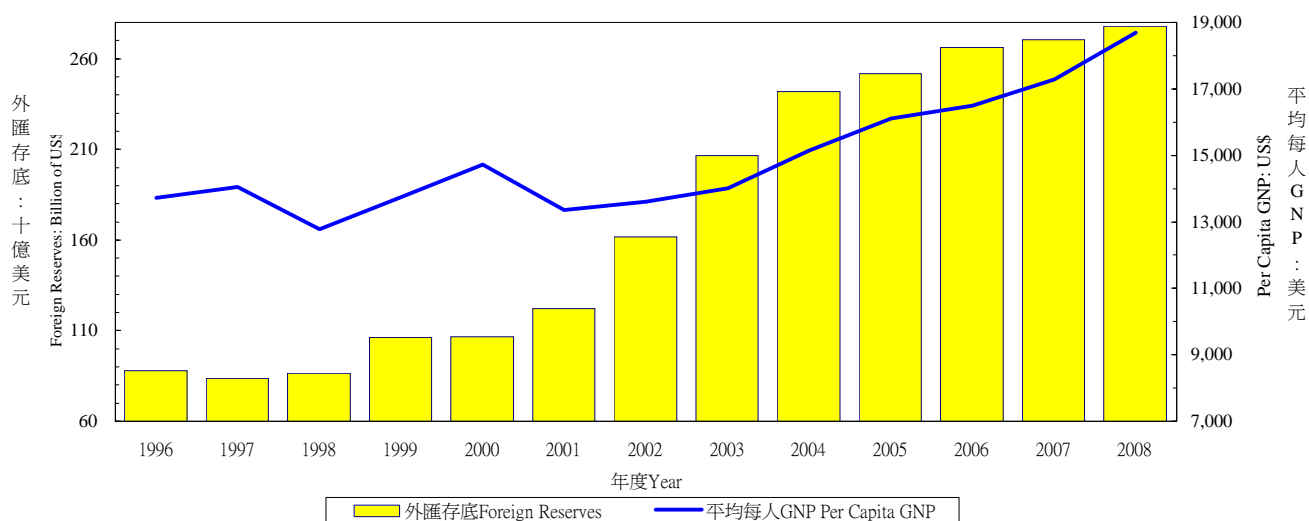
年與季 Year & Quarter	GDP 經濟成長率 Economic Growth Rate (%)	名目 GDP (新台幣十億元) GDP (Bil.NT\$)	民間消費 Private Consumption Expenditure		民間固定投資 Private Spe. Gross Fixed Cap. Formation		商品及勞務輸出 Exports of Goods and Services		商品及勞務輸入 Imports of Goods and Services		政府消費 Government Consumption Expenditure	
			佔 GDP /GDP (%)	年增率 Annual Rate of Change (%)	佔 GDP /GDP (%)	年增率 Annual Rate of Change (%)	佔 GDP /GDP (%)	年增率 Annual Rate of Change (%)	佔 GDP /GDP (%)	年增率 Annual Rate of Change (%)	佔 GDP /GDP (%)	年增率 Annual Rate of Change (%)
1996	6.30	7,945	58.52	9.14	13.49	7.81	45.82	6.75	42.56	6.02	15.12	15.87
1997	6.59	8,610	58.60	7.08	14.61	18.61	46.59	8.98	44.54	13.44	15.28	5.98
1998	4.55	9,238	58.85	6.19	15.84	13.24	46.26	2.60	45.22	6.63	15.16	3.65
1999	5.75	9,641	59.71	5.51	15.20	1.01	46.44	11.86	43.92	4.54	14.13	-4.33
2000	5.77	10,032	60.68	4.59	16.65	15.61	52.40	18.14	50.21	14.23	13.87	0.71
2001	-2.17	9,862	62.15	0.67	12.36	-26.83	48.89	-8.08	43.64	-13.51	14.24	0.53
2002	4.64	10,293	61.06	2.60	12.48	6.68	52.89	13.88	45.80	10.65	13.90	2.06
2003	3.50	10,520	60.39	1.48	12.70	3.65	57.03	10.38	49.69	8.08	13.87	0.57
2004	6.15	11,066	60.72	4.46	16.51	33.05	62.65	8.97	59.68	18.88	13.24	-0.54
2005	4.16	11,455	61.31	2.99	15.86	0.31	65.13	4.08	60.01	3.77	13.08	1.08
2006	4.89	11,890	60.41	1.76	16.13	2.96	69.26	11.01	64.17	5.16	12.64	-0.41
2007	5.70	12,588	59.19	2.61	16.24	3.39	71.20	9.36	66.29	3.96	12.12	0.80
2008	4.32	13,141	59.20	2.92	16.47	3.26	70.31	2.71	65.22	0.46	11.90	2.22
2006 4	4.07	3,119	56.52	2.43	16.15	10.87	68.86	6.40	62.47	1.05	12.53	0.02
2007 1	4.19	3,092	62.88	2.12	14.38	1.43	66.54	4.57	59.57	-0.45	13.06	-0.24
2	5.24	2,910	58.75	2.57	19.10	8.55	75.11	9.41	72.16	2.39	11.85	0.03
3	6.86	3,264	59.73	3.61	16.36	5.84	70.31	10.08	67.49	7.33	11.54	1.66
4	6.39	3,322	55.63	2.15	15.34	-2.40	72.98	12.92	66.23	6.29	12.07	1.48
2008 1	5.13	3,257	62.34	2.24	14.67	3.24	65.84	6.85	60.43	0.46	12.71	2.73
2	4.71	3,056	58.72	2.57	18.79	0.20	74.83	2.43	70.39	-0.24	11.55	1.84
3	3.74	3,385	60.19	3.22	16.40	1.90	68.56	0.38	65.32	-0.99	11.38	2.12
4	3.80	3,444	55.67	3.67	16.17	7.97	72.26	1.86	65.08	2.62	11.97	2.27

資料來源：行政院主計處，中華民國臺灣地區國民經濟動向統計季報，中央銀行經濟研究處，臺灣地區金融統計月報。

註：以上所列為政府發佈資料，本院對GDP的預測列於本刊第一部份臺灣總體經濟預測。

Source: DGBAS, Executive Yuan, "Quarterly National Economic Trends, Taiwan Area, ROC
The Central Bank of China, Financial Statistics, Taiwan District, The Republic of China

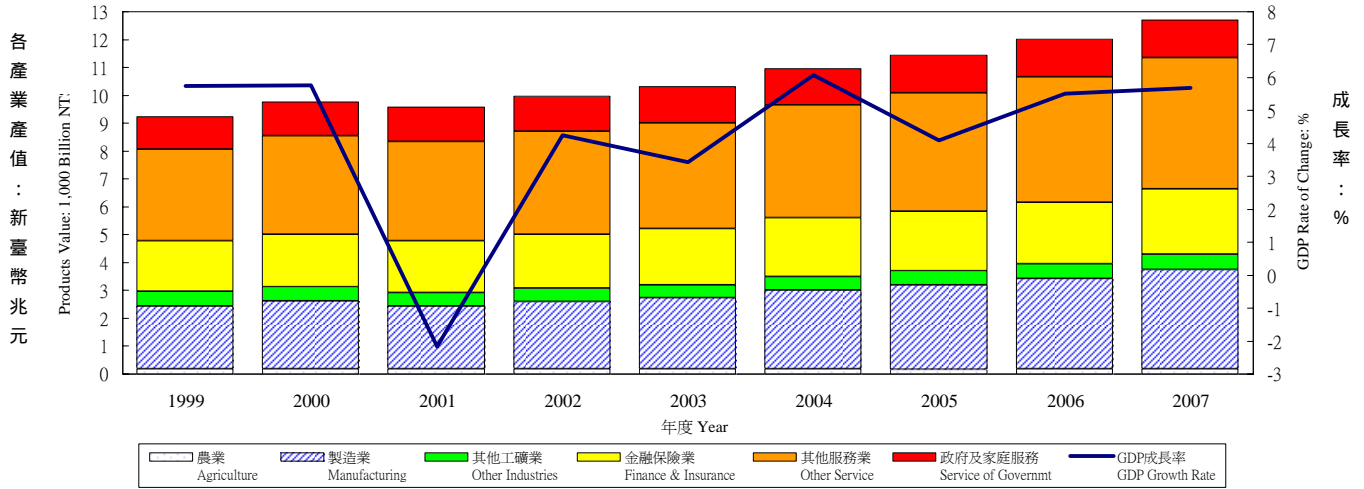
外匯存底及平均每人GNP Total Foreign Reserves & Per Capita GNP



年與季 Year & Quarter	公營事業固定投資 Public Enter. Gross Fixed Capita Formation		政府固定投資 Government Gross Fixed Capita Formation		存貨增加 Increase in Stocks		國外要素淨收入 Net Factor Income From Abroad		平均每人 GNP (美元) Per Capita GNP (US\$)	外匯存底 (十億美元) Total Foreign Reserves (Billion of US\$)
	佔 GDP /GDP (%)	年增率 Annual Rate of Change (%)	佔 GDP /GDP (%)	年增率 Annual Rate of Change (%)	佔 GDP /GDP (%)	新台幣 百萬 (1996年價格) NT Mil (1996=100)	佔 GDP /GDP (%)	年增率 Annual Rate of Change (%)		
1996	2.73	-0.20	6.19	0.42	0.68	51,347	1.38	-4.54	13,714	88.0
1997	2.37	-2.48	5.73	-0.29	1.36	115,254	1.04	-19.04	14,048	83.5
1998	2.40	4.49	5.42	-0.29	1.30	118,911	0.74	-24.87	12,773	86.6
1999	2.56	13.33	5.36	4.10	0.52	51,674	0.94	31.72	13,737	106.2
2000	2.33	-2.96	4.88	-4.05	-0.60	-58,262	1.39	52.36	14,721	106.7
2001	2.38	1.43	4.63	-6.42	-1.00	-98,959	1.95	37.74	13,348	122.2
2002	2.20	-1.23	3.88	-12.71	-0.61	-60,948	2.36	26.52	13,604	161.7
2003	2.08	-3.94	3.83	-1.26	-0.21	-19,224	3.13	35.95	14,012	206.6
2004	1.64	-18.15	3.72	-5.78	0.78	78,446	3.36	11.48	15,156	241.7
2005	1.79	16.20	3.63	-1.92	0.09	9,286	2.54	-23.32	16,113	251.8
2006	1.60	-7.48	3.44	-6.20	0.10	10,404	2.62	6.28	16,494	266.1
2007	1.63	3.88	3.30	-3.91	0.05	1,669	3.00	18.81	17,294	270.3
2008	1.68	5.61	3.23	-2.39	0.18	14,530	3.61	23.33	18,693	277.8
2006 4	2.23	-6.05	3.95	-9.17	0.49	11,021	2.48	-12.69	4,274	266.1
2007 1	1.37	20.89	2.51	-13.03	-1.24	-30,578	4.21	9.75	4,294	268.0
2	1.44	1.82	3.23	-6.87	0.81	17,896	3.29	38.09	3,981	266.1
3	1.50	0.66	3.36	-0.80	-0.07	-1,489	1.35	-9.08	4,397	262.9
4	2.16	-0.76	4.05	1.62	0.69	15,840	3.23	32.71	4,622	270.3
2008 1	1.31	-2.98	2.58	0.30	-0.46	-11,803	5.02	21.94	4,676	277.8
2	1.50	6.54	3.23	-0.53	0.36	7,838	3.78	17.25	4,364	289.4
3	1.57	6.63	3.24	-3.55	0.08	1,977	2.08	56.54	4,751	--
4	2.30	9.26	3.84	-4.23	0.71	16,518	3.64	16.77	4,902	--

表二：各業產值概況

Table 2. GDP Components by Industry GDP各產業產值及成長率 GDP Products Value & Growth Rate



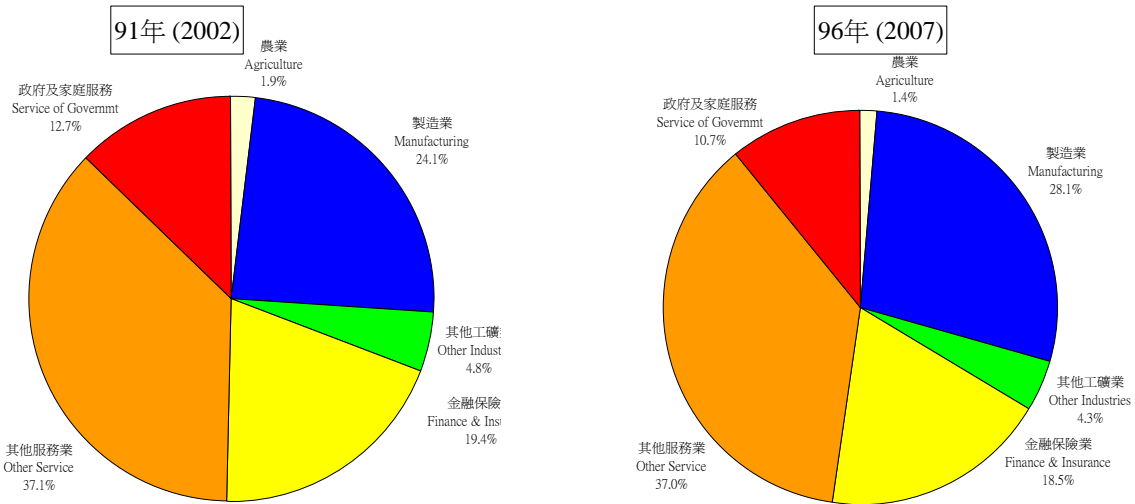
年與季 Year & Quarter	國內 生產毛額 GDP (新臺幣 十億元) 按90年價格 計算GDP (Bil. NTS)	GDP 成長率 GDP Rate of Change (%)	產業 Sector											
			農業 Agriculture Hunting Forestry & Fishing		合計 Sub Total		礦業 Mining & Quarrying		製造業 Manufacturing		營造業 Construction		水電燃氣業 Electricity, Gas & Water	
			佔GDP /GDP (%)	年增率 Annual Rate of Change (%)	佔GDP /GDP (%)	年增率 Annual Rate of Change (%)	佔GDP /GDP (%)	年增率 Annual Rate of Change (%)	佔GDP /GDP (%)	年增率 Annual Rate of Change (%)	佔GDP /GDP (%)	年增率 Annual Rate of Change (%)	佔GDP /GDP (%)	年增率 Annual Rate of Change (%)
1999	9,531	5.75	1.93	2.73	29.21	5.38	0.45	-7.85	23.67	7.36	3.17	-5.07	1.92	4.09
2000	10,081	5.77	1.85	1.21	29.22	5.77	0.40	-6.52	24.02	7.33	2.86	-4.56	1.94	6.50
2001	9,862	-2.17	1.85	-1.95	27.62	-7.51	0.37	-10.24	22.73	-7.44	2.55	-12.58	1.97	-0.35
2002	10,281	4.25	1.86	4.74	28.05	5.88	0.36	1.46	23.41	7.38	2.37	-3.41	1.92	1.40
2003	10,634	3.43	1.80	-0.06	28.14	3.77	0.28	-19.14	23.80	5.15	2.16	-5.58	1.91	2.72
2004	11,279	6.07	1.63	-4.09	29.30	10.41	0.26	-2.80	25.01	11.49	2.16	5.95	1.87	3.91
2005	11,740	4.09	1.44	-8.07	29.99	6.57	0.24	-4.54	25.70	6.96	2.16	4.09	1.90	5.71
2006	12,387	5.51	1.45	6.09	30.43	7.04	0.20	-10.92	26.19	7.51	2.18	6.68	1.86	3.32
2007	13,092	5.70	1.33	-2.91	31.43	9.16	0.20	7.31	27.29	10.12	2.13	3.38	1.80	2.58
2007 1	3,026	5.12	1.34	-2.97	29.49	7.83	0.23	0.06	25.39	8.93	2.14	1.03	1.73	2.29
2007 2	2,979	5.07	1.51	1.76	29.54	8.59	0.18	-19.26	25.36	9.25	2.26	8.63	1.75	3.09
2007 3	3,142	5.34	1.27	13.41	32.05	8.46	0.18	-10.35	27.62	8.73	2.16	10.61	2.09	4.81
2007 4	3,240	4.07	1.65	12.68	30.55	3.65	0.20	-14.33	26.32	3.63	2.17	6.68	1.86	2.83
2008 1	3,152	4.19	1.28	-0.82	29.71	4.97	0.20	-11.94	25.63	5.19	2.14	4.25	1.74	4.97
2008 2	3,135	5.24	1.50	4.21	30.28	7.86	0.22	25.96	26.10	8.33	2.26	5.05	1.71	2.82
2008 3	3,358	6.86	1.21	1.68	33.03	10.15	0.19	8.68	28.78	11.35	2.06	2.34	2.00	2.47
2008 4	3,447	6.39	1.33	-13.92	32.47	13.08	0.21	11.60	28.42	14.90	2.08	1.98	1.75	0.41

資料來源：行政院主計處，中華民國臺灣地區國民經濟動向統計季報

註：國內生產毛額除整體產業、政府服務生產者、對家庭服務之民間非營利機構生產者，以及家事服務生產者之生產毛額外，尚有進口稅、加值型營業稅，以及設算銀行服務費等三個其他項未列入本表。

Source：DGBAS, Executive Yuan, "Quarterly National Economic Trends, Taiwan Area, ROC".

Note：Import duties, Value added taxes and imputed bank services charge, are not shown in the table.

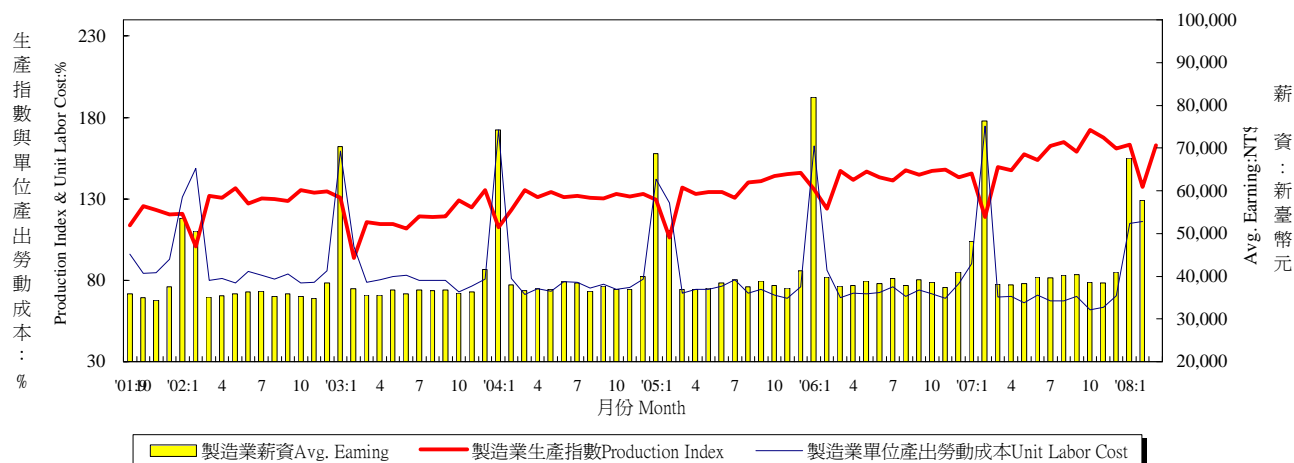


註：本圖型因未加上進口稅、加值型營業稅及減掉設算銀行服務費，所佔百分比與下表佔GDP百分比有些微差異。

Note: Import duties, Value added taxes and imputed bank services charge are not included; therefore the percentage is different from the table.

年與季 Year & Quarter	產業 Sector										政府服務 生產者 Producers of Government Services		對家庭服務之民 間非營利機構生 產者 Producers of Private NonProfit Services to Households		家事服務 生產者 Domestic Services of Households	
	服務業 Services															
	合計 Sub-Total		運輸倉儲及 通訊業 Transportation Storage & Communication		商業 Wholesale & Retail Trade Rest. & Hotel		金融保險 不動產 Finance Insurance Real Estate		其他產業Other Services							
	佔GDP /GDP (%)	年增率 Annual Rate of Change (%)	佔GDP /GDP (%)	年增率 Annual Rate of Change (%)	佔GDP /GDP (%)	年增率 Annual Rate of Change (%)	佔GDP /GDP (%)	年增率 Annual Rate of Change (%)	佔GDP /GDP (%)	年增率 Annual Rate of Change (%)	佔GDP /GDP (%)	年增率 Annual Rate of Change (%)	佔GDP /GDP (%)	年增率 Annual Rate of Change (%)	佔GDP /GDP (%)	年增率 Annual Rate of Change (%)
1999	53.54	7.00	5.85	18.06	18.25	6.85	18.94	3.92	10.13	10.45	11.10	3.09	0.36	-24.99	0.71	5.24
2000	53.78	6.25	6.17	11.50	18.43	6.85	18.54	3.52	10.45	9.10	10.87	3.56	0.40	14.99	0.71	5.31
2001	55.07	0.17	6.45	2.29	18.28	-2.99	18.97	0.10	11.36	6.37	11.38	2.47	0.42	4.25	0.75	3.63
2002	54.73	3.60	6.53	5.49	18.09	3.15	18.78	3.17	11.40	4.52	11.15	2.15	0.44	8.31	0.74	3.09
2003	54.73	3.44	6.56	3.95	17.90	2.38	19.01	4.70	11.33	2.87	11.13	3.24	0.39	-8.54	0.72	1.08
2004	54.51	5.64	6.65	7.48	18.13	7.42	18.68	4.25	11.22	5.01	10.64	1.35	0.38	4.50	0.70	3.18
2005	54.52	4.12	6.65	4.18	18.61	6.83	18.30	1.98	11.31	4.93	10.32	1.01	0.39	5.27	0.72	6.37
2006	54.12	4.72	6.57	4.17	18.73	6.19	17.90	3.21	11.45	6.76	9.85	0.70	0.37	2.10	0.74	7.85
2007	53.94	5.35	6.37	2.49	18.64	5.17	18.01	6.30	11.58	6.96	9.31	-0.11	0.34	-3.22	0.73	4.88
2007 1	55.39	5.77	7.17	3.95	19.02	6.09	18.14	4.34	11.46	2.56	9.61	0.63	0.35	1.89	0.78	8.28
2007 2	54.59	2.87	6.68	4.70	18.41	6.26	18.75	2.42	11.37	1.05	10.08	0.50	0.42	17.04	0.77	9.67
2007 3	52.39	4.40	6.25	4.23	17.64	6.69	17.48	1.80	11.61	0.81	10.18	0.49	0.36	3.84	0.71	8.37
2007 4	54.17	5.30	6.21	3.84	19.80	5.79	17.32	4.31	11.34	2.86	9.55	1.19	0.37	-11.06	0.68	5.05
2008 1	55.80	4.97	7.06	2.56	19.15	4.86	18.29	5.03	11.82	2.83	9.29	0.71	0.34	2.18	0.79	4.85
2008 2	54.49	5.05	6.52	2.63	18.31	4.67	18.80	5.52	11.57	0.60	9.65	0.79	0.34	-14.50	0.77	5.01
2008 3	52.15	6.36	5.99	2.46	17.44	5.64	17.79	8.77	11.65	0.50	9.61	0.84	0.34	2.22	0.70	4.92
2008 4	53.49	5.06	5.97	2.32	19.63	5.48	17.23	5.88	11.31	-0.08	8.73	-2.76	0.34	-1.33	0.67	4.75

表三：生產概況
Table 3. Industry Indicators

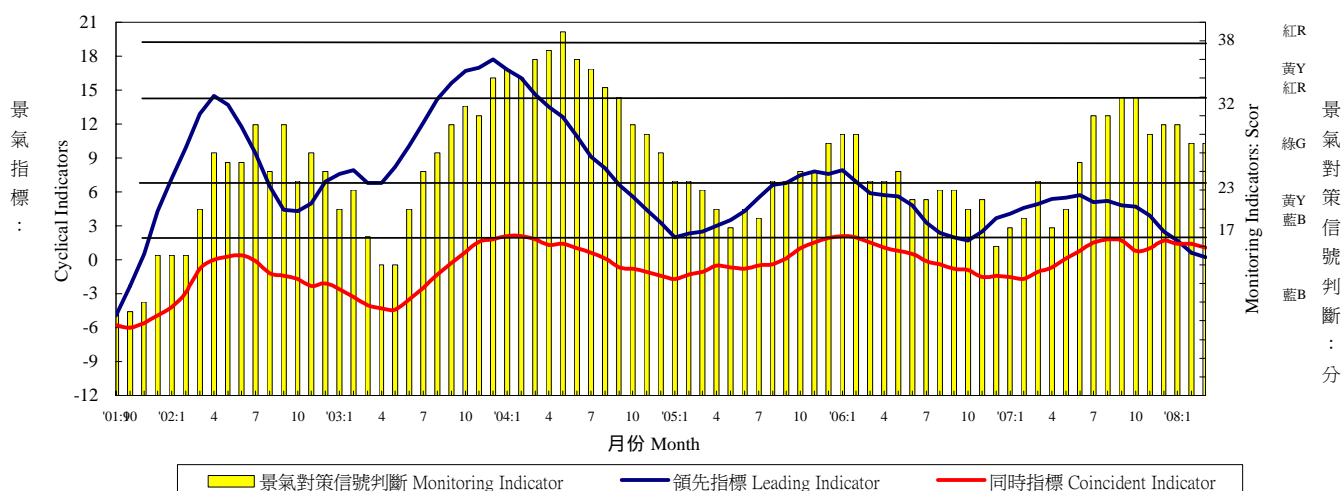


年與月 Year & Month	製造業生產 (基期90年=100) Mfg. Industrial Production (2001=100)		製造業重工業生產 (基期90年=100) Heavy Industry Production (2001=100)		製造業輕工業生產 (基期90年=100) Light Industry Production (2001=100)		製造業單位產出勞動成本 (基期90年=100) Unit labor cost in Manufacturing (2001=100)		製造業薪資 Average Earnings of Employees in Manufacturing	
	指數 Index (%)	年增率 Annual Rate of Change (%)	指數 Index (%)	年增率 Annual Rate of Change (%)	指數 Index (%)	年增率 Annual Rate of Change (%)	指數 Index (%)	年增率 Annual Rate of Change (%)	每人每月 (元) Wages per Month (NT\$)	年增率 Annual Rate of Change (%)
1996	84.67	-19.85	75.50	-20.90	112.70	11.75	105.00	-0.61	33,911	4.17
1997	90.79	7.23	83.63	10.77	112.35	-0.31	103.70	-1.24	35,492	4.66
1998	93.68	3.18	88.36	5.66	109.30	-2.71	103.51	-0.18	36,546	2.97
1999	100.98	7.79	97.62	10.48	110.25	0.87	100.01	-3.38	37,882	3.66
2000	109.12	8.06	108.62	11.27	110.48	0.21	97.38	-2.63	39,080	3.16
2001	100.00	-8.36	100.00	-7.94	100.00	-9.49	100.00	2.69	38,586	-1.26
2002	109.39	9.39	113.73	13.73	97.46	-2.54	89.72	-10.28	38,565	-0.05
2003	117.46	7.38	124.64	9.59	97.67	0.22	87.17	-2.84	39,583	2.64
2004	129.85	10.54	140.89	13.03	99.43	1.80	83.46	-4.26	40,611	2.60
2005	135.05	4.01	148.92	5.70	96.84	-2.60	82.53	-1.11	41,751	2.81
2006	142.51	5.53	159.64	7.20	95.34	-1.55	80.57	-2.37	42,293	1.30
2007	155.07	8.81	176.46	10.54	96.12	0.82	76.24	-5.37	43,026	1.73
2007 4	147.41	4.18	166.48	5.11	94.89	-0.08	70.06	-3.02	37,917	0.12
2007 5	157.53	7.28	178.60	8.46	99.51	1.84	66.37	-7.47	38,258	-1.77
2007 6	153.92	7.56	175.70	9.77	93.92	-2.55	70.71	-2.59	39,759	3.78
2007 7	162.64	15.04	186.00	17.74	98.28	2.72	67.19	-11.82	39,663	0.31
2007 8	164.78	11.58	187.75	13.49	101.51	2.75	67.41	-3.93	40,236	6.22
2007 9	159.18	10.04	183.73	12.75	91.56	-2.82	70.12	-5.26	40,359	3.21
2007 10	172.54	17.37	198.23	19.40	101.78	7.56	61.93	-13.54	38,581	0.00
2007 11	167.73	13.45	192.63	15.62	99.12	3.09	63.44	-7.96	38,363	2.65
2007 12	160.98	12.49	183.86	14.96	97.93	1.24	70.70	-9.23	40,994	0.19
2008 1	163.26	12.08	184.78	13.99	103.98	3.61	114.76	27.28	67,597	40.40
2008 2	137.41	15.75	159.47	18.25	76.63	3.25	116.27	-33.47	57,819	-24.21
2008 3	162.79	8.73	186.53	11.27	97.38	-3.00	--	--	--	--
2008 1-3	154.49	11.92	176.93	14.25	92.66	1.10	--	--	--	--

資料來源：經濟部統計處，臺灣地區工業生產統計月報，行政院主計處，臺灣地區薪資與生產力統計月報，人力資源統計月報。
Source : Department of Statistics, Ministry of Economic Affairs, "Industrial Production Statistics Monthly, Taiwan Area, ROC

表四：景氣概況

Table 4. Cyclical Indicators



年與月 Year & Month	景氣指標 (85年=100) Domestic business indicators (1996=100)		景氣對策信號判斷 (分) Indicators (Score)			製造業設備 利用率 Utility ratio of manufacturing Capacity (%)	製造業存貨率 Ratio of inventor in manufacturing (1996=100)	失業率 Un-employment rates (%)
	領先指標 Leading	同時指標 Coincident	黃藍	YB	20			
1996	4.92	-1.1	黃藍	YB	20	78.25	70.84	2.60
1997	6.86	-0.8	綠	G	27	78.70	65.18	2.72
1998	-0.71	-3.2	黃藍	YB	20	78.84	68.48	2.69
1999	9.59	-0.1	黃藍	YB	22	78.91	68.81	2.92
2000	1.70	7.4	綠	G	26	80.35	64.55	2.99
2001	-6.88	-3.3	藍	B	10	76.28	79.33	4.57
2002	8.88	-1.3	綠	G	23	77.02	67.74	5.17
2003	11.73	-1.8	綠	G	23	78.32	63.34	4.99
2004	10.13	0.5	黃紅	YR	33	80.08	54.73	4.44
2005	4.95	-0.2	黃藍	YB	22	80.13	64.74	4.13
2006	4.37	0.2	黃藍	YB	22	80.29	62.15	3.91
2007	4.05	0.4	綠	G	25	80.42	61.87	3.91
2007 4	5.4	-0.7	黃藍	YB	18	80.5	56.2	3.83
2007 5	5.5	0.1	黃藍	YB	20	81.2	55.6	3.87
2007 6	5.7	0.8	綠	G	25	81.0	55.0	3.96
2007 7	5.1	1.5	綠	G	30	81.3	-	4.03
2007 8	5.2	1.8	綠	G	30	81.8	-	4.09
2007 9	4.8	1.7	黃紅	YR	32	-	-	3.99
2007 10	4.7	0.8	黃紅	YR	32	-	-	3.92
2007 11	3.9	1.0	綠	G	28	-	-	3.87
2007 12	2.5	1.7	綠	G	29	-	-	3.83
2008 1	1.7	1.4	綠	G	29	-	-	3.80
2008 2	0.6	1.4	綠	G	27	-	-	3.94
2008 3	0.2	1.1	綠	G	27	--	--	3.86

資料來源：行政院經建會，台灣景氣指標，經濟部統計處，國內外經濟統計指標速報。

註：景氣指標與景氣對策信號之年平均數字，係依據當年12月份之數字。

Source：Council for Economic Planning & Development, ROC, "Business Indicators of Taiwan."

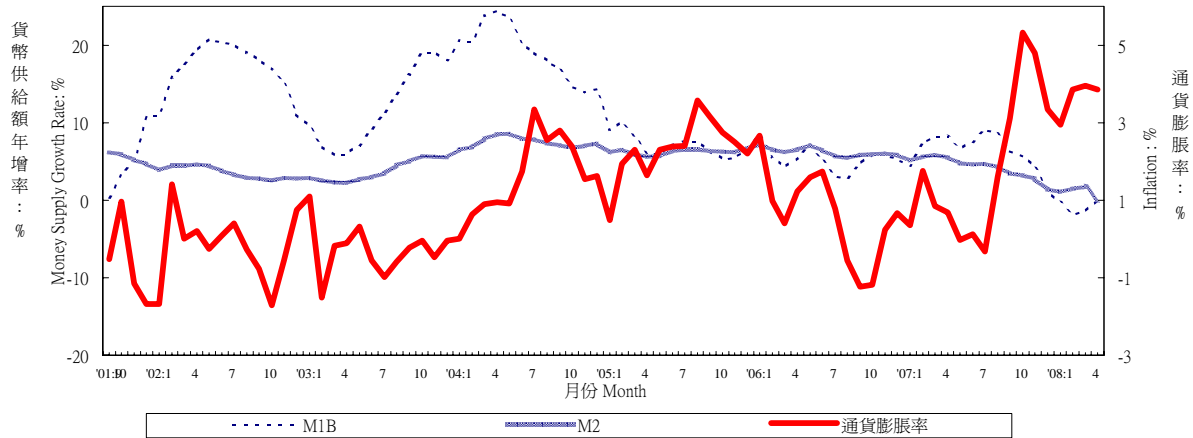
Dept. of Statistics, Ministry of Economic Affairs, "Domestic & Foreign Express Report of Economic Statistics Indicators".

Note：R:Red,overheating; G:Green,stable; B:Blue,recession; YR:between Y & R; YB:between Y & B

表五：物價與金融概況

Table 5. Prices and Financial Situation

貨幣供給額與通貨膨脹率 Money Supply Growth Rate and Inflation

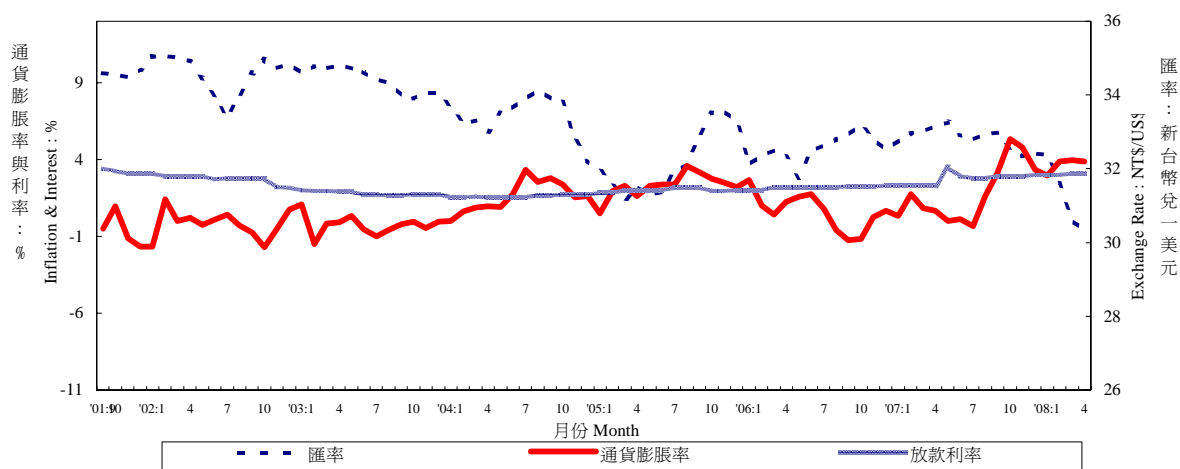


年與月 Year & Month	零售物價 (基期90年=100) Wholesale Prices (2001=100)		消費者物價 (基期90年=100) Consumer Prices (2001=100)		貨幣供給額年增率 Money Supply (Annual Growth Rate)		
	指數 Index (%)	年增率 Annual Rate of Change (%)	指數 Index (%)	年增率 Annual Rate of Change (%)	M1A (%)	M1B (%)	M2 (%)
1996	104.15	-1.01	96.10	3.08	-0.50	4.13	9.23
1997	103.68	-0.45	96.96	0.89	7.74	13.82	8.26
1998	104.30	0.60	98.60	1.69	0.39	2.52	8.76
1999	99.55	-4.55	98.77	0.17	3.09	9.87	8.33
2000	101.36	1.82	100.01	1.26	7.36	10.58	7.04
2001	100.00	-1.34	100.00	-0.01	-4.69	-1.02	5.79
2002	85.78	-14.22	99.80	-0.20	8.59	17.01	3.55
2003	87.91	2.48	95.62	-4.19	11.28	11.82	3.77
2004	94.09	7.03	97.17	1.61	21.10	18.98	7.45
2005	94.67	0.61	99.41	2.31	7.65	7.10	6.22
2006	100.00	5.64	100.00	0.60	5.72	5.30	6.22
2007	106.47	6.47	101.80	1.80	6.80	6.44	4.25
2007	5	106.61	7.80	100.54	-0.02	6.93	4.74
	6	106.66	5.59	101.15	0.13	5.93	4.63
	7	106.78	4.09	100.91	-0.33	5.93	4.65
	8	107.60	3.67	102.25	1.61	7.25	4.25
9	108.83	4.86	103.20	3.11	7.00	3.47	
10	109.09	5.80	105.39	5.33	5.19	3.22	
11	110.40	8.13	104.77	4.80	6.29	2.78	
12	110.52	8.61	103.52	3.33	4.26	1.36	
2008	1	111.27	10.10	102.91	2.94	-0.30	1.06
	2	110.62	8.75	104.23	3.86	-1.84	1.43
	3	110.47	7.24	103.11	3.95	-1.45	1.75
	4	111.82	6.18	104.20	3.86	--	--
1-4	111.05	8.05	103.61	3.65	--	--	

資料來源：中央銀行經濟研究處，臺灣地區金融統計月報，臺灣證券交易所，證券統計資料月報。

Source : Economic Research Department, The Central Bank of China. Financial Statistics Monthly, Taiwan District ROC.

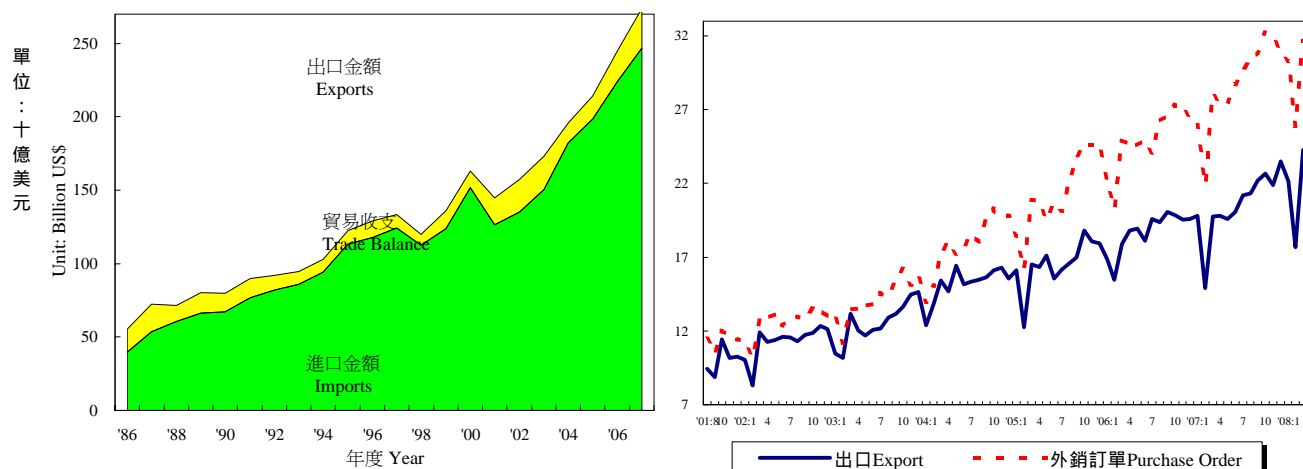
利率、通貨膨脹率與匯率
Interest Rate, Exchange Rate and Inflation



年與月 Year & Month	存款 加權平均利率 Weighted Average Interest Rates on Deposits (%)	基本放款利率 Short Term Loans (1 Year, Max) Interest Rate (%)	商業本票 初級市場 180天利率 Commercial Paper Primary Mkt.(180d) Interest Rate (%)	股票價格 Stock Prices		匯率 Exchange Rate	
				指數 Index (%)	年增率 Annual Rate of Change (%)	新臺幣 對一美元 NT\$ Against US\$	新臺幣 對一日元 NT\$ Against Yen
1996	5.79	7.68	6.23	6,004	8.30	27.46	0.2524
1997	5.36	7.58	7.07	8,411	40.09	28.66	0.2369
1998	5.72	8.01	7.04	7,738	-8.00	33.44	0.2555
1999	5.00	7.84	5.38	7,427	-4.02	32.27	0.2833
2000	4.62	7.86	5.62	7,847	5.66	31.23	0.2897
2001	4.09	7.78	4.17	4,907	-37.46	33.80	0.2781
2002	1.83	7.46	2.75	5,247	6.91	34.58	0.2757
2003	1.11	7.10	1.80	5,144	-1.96	34.42	0.2969
2004	1.08	7.07	1.61	6,033	17.30	33.43	0.3089
2005	1.34	7.32	2.00	6,090	0.94	32.18	0.2920
2006	1.61	7.53	2.19	6,842	12.35	32.53	0.2797
2007	1.90	7.93	2.74	8,489	24.08	32.84	0.2789
2007 5	1.77	7.75	3.50	8,104	13.77	33.26	0.2755
6	1.97	7.75	2.90	8,580	31.03	32.93	0.2686
7	1.97	8.18	2.80	9,358	43.88	32.79	0.2697
8	1.97	8.18	2.80	8,757	33.66	32.95	0.2823
9	2.03	8.18	2.90	9,069	33.73	32.98	0.2868
10	2.03	8.07	2.90	9,605	36.64	32.55	0.2813
11	2.03	8.07	2.90	8,800	21.09	32.33	0.2907
12	2.09	8.07	3.00	8,309	8.90	32.42	0.2888
2008 1	2.09	8.10	3.00	7,923	1.38	32.37	0.3007
2	2.09	8.10	3.00	7,999	2.32	31.61	0.2950
3	2.09	8.10	3.10	8,440	10.08	30.60	0.3038
4	--	8.10	3.10	8,878	11.09	30.35	0.2961
5	--	--	--	--	--	--	--

表六：臺灣進出口貿易

Table 6. Foreign Trade Values



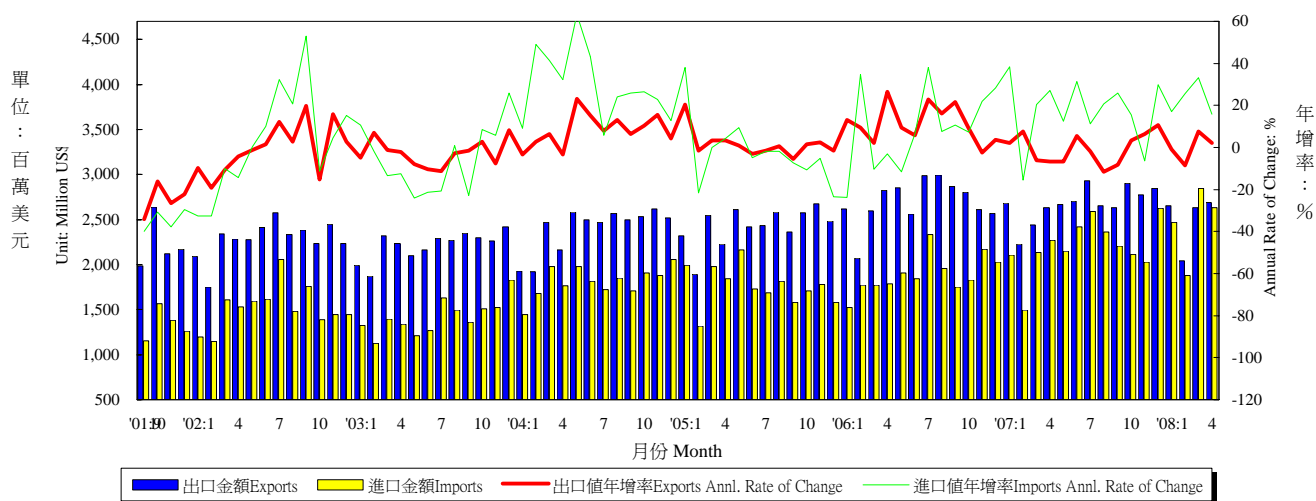
年與月 Year & Month	海關進出口貿易額 Export & Import Values of Foreign Trade					外銷訂單 Purchase Order for Exports	
	出口金額 (百萬美元) Amount (Mil. US\$)	年增率 Annual Rate of Change (%)	進口金額 (百萬美元) Amount (Mil. US\$)	年增率 Annual Rate of Change (%)	貿易收支 (百萬美元) Trade Balance	金額 (百萬美元) Amount (Mil. US\$)	年增率 Annual Rate of Change (%)
1996	117,581	3.74	105,922	1.84	11,659	118,959	4.76
1997	124,170	5.60	114,955	8.53	9,215	123,797	4.07
1998	112,595	-9.32	105,230	-8.46	7,366	118,843	-4.00
1999	123,733	9.89	111,196	5.67	12,537	127,474	7.26
2000	151,950	22.80	140,732	26.56	11,218	153,424	20.36
2001	126,314	-16.87	107,971	-23.28	18,344	135,714	-11.54
2002	135,317	7.13	113,245	4.89	22,072	150,952	11.23
2003	150,600	11.29	128,010	13.04	22,590	170,028	12.64
2004	182,370	21.10	168,758	31.83	13,613	215,087	26.50
2005	198,432	8.81	182,614	8.21	15,817	256,393	19.20
2006	224,017	12.89	202,698	11.00	21,319	299,313	16.74
2007	246,677	10.12	219,252	8.17	27,425	345,814	15.54
2007 5	19,580	3.48	18,178	-0.19	1,402	27,529	11.92
6	20,078	10.96	18,661	10.62	1,417	28,700	15.19
7	21,183	8.21	20,730	16.65	454	29,723	23.49
8	21,322	10.06	18,067	-0.49	3,254	30,490	16.32
9	22,209	10.60	19,052	10.46	3,157	30,918	16.10
10	22,686	14.35	19,205	9.83	3,482	32,202	17.99
11	21,872	11.93	17,585	2.74	4,287	31,892	17.18
12	23,477	19.74	21,260	27.47	2,217	31,024	17.56
2008 1	22,133	11.85	20,619	14.83	1,515	30,305	16.89
2	17,661	18.53	15,952	25.89	1,709	25,880	18.08
3	24,254	22.77	24,085	37.34	169	31,618	12.79
4	22,592	13.97	21,594	17.68	999	--	--
1-4	86,641	16.66	82,250	23.66	4,392	--	--

資料來源：財政部統計處，臺灣地區進出口貿易統計月報，經濟部統計處，臺灣地區外銷訂單統計速報。

Source : Department of Statistics, Ministry of Finance, "Primary Statistics of Export & Import", and Department of Economic Statistics, Ministry of Economic Affairs, "Primary Statistics of Export Order for Exports".

表七：臺灣對美國之進出口狀況

Table 7. Trade with the United States



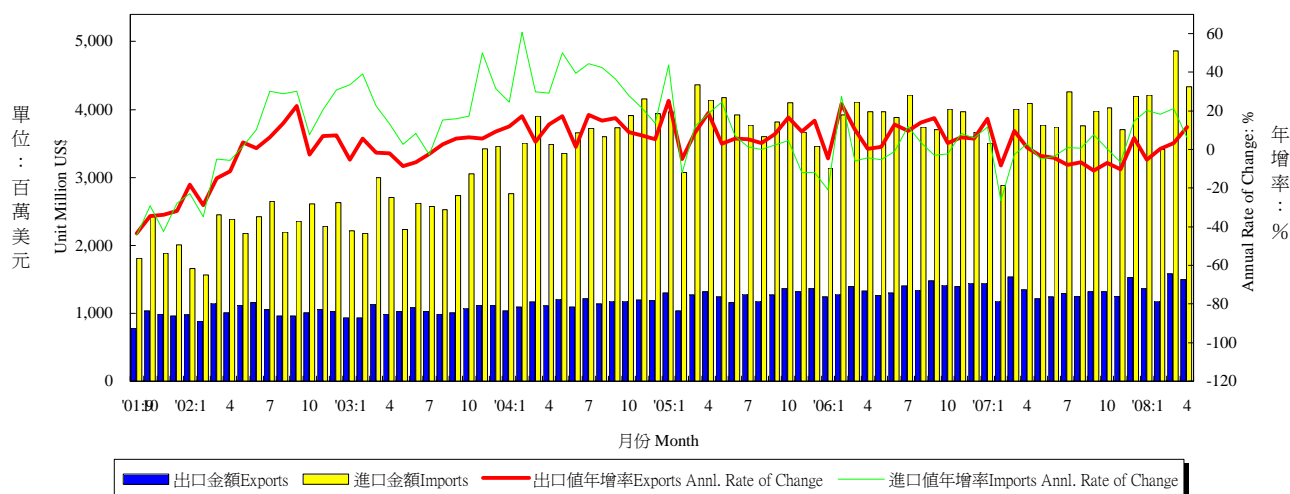
年與月 Year & Month	出口值 Exports			進口值 Imports			出入超 Trade Balance	貿易總額 Total Trade Amount	
	金額 (百萬美元) Amount (Mil. US\$)	年增率 Annual rate of change (%)	份額 Export share (%)	金額 (百萬美元) Amount (Mil. US\$)	年增率 Annual rate of change (%)	份額 Export share (%)	金額 (百萬美元) Amount (Mil. US\$)	金額 (百萬美元) Amount (Mil. US\$)	年增率 Annual rate of change (%)
1996	26,866	1.74	22.85	19,972	-3.85	18.86	6,895	46,838	-0.72
1997	29,552	10.00	23.80	23,234	16.33	20.21	6,318	52,786	12.70
1998	29,959	1.38	26.61	19,845	-14.59	18.86	10,114	49,804	-5.65
1999	31,339	4.61	25.33	19,818	-0.14	17.82	11,521	50,595	1.59
2000	35,588	13.56	23.42	25,270	27.51	17.96	10,319	59,941	18.47
2001	28,136	-20.94	22.27	18,407	-27.16	17.05	9,728	45,884	-23.45
2002	27,365	-2.74	20.22	18,256	-0.82	16.12	9,110	45,621	-0.57
2003	26,554	-2.97	17.63	16,995	-6.90	13.28	9,558	43,549	-4.54
2004	28,751	8.27	15.77	21,780	28.16	12.91	6,971	50,531	16.03
2005	29,114	1.26	14.67	21,171	-2.80	11.59	7,943	50,285	-0.49
2006	32,361	11.15	14.45	22,664	7.06	11.18	9,696	55,025	9.43
2007	32,077	-0.88	13.00	26,508	16.96	12.09	5,569	58,585	6.47
2007 5	2,666	-6.58	13.62	2,149	12.48	11.82	518	4,815	1.07
2007 6	2,701	5.58	13.45	2,422	31.43	12.98	279	5,122	16.41
2007 7	2,930	-1.98	13.83	2,591	11.18	12.50	338	5,521	3.79
2007 8	2,651	-11.55	12.43	2,361	20.78	13.07	290	5,012	1.21
2007 9	2,631	-8.30	11.84	2,204	25.97	11.57	426	4,835	4.69
2007 10	2,901	3.40	12.79	2,113	15.43	11.00	788	5,014	8.15
2007 11	2,772	6.28	12.67	2,029	-6.35	11.54	742	4,801	0.54
2007 12	2,843	10.74	12.11	2,627	29.71	12.36	216	5,470	19.11
2008 1	2,652	-1.03	11.98	2,470	17.19	11.98	182	5,121	6.99
2008 2	2,040	-8.48	11.55	1,877	25.48	11.77	163	3,917	5.16
2008 3	2,630	7.74	10.84	2,848	33.29	11.83	-219	5,478	19.67
2008 4	2,692	2.22	11.92	2,629	15.79	12.18	63	5,321	8.50
2008 1-4	10,013	0.31	11.57	9,824	22.64	11.94	189	19,838	10.25

資料來源：財政部統計處，臺灣地區進出口貿易統計月報。

Source : Dept. of Statistics, Ministry of Finance, "Preliminary Statistics of Export & Import."

表八：臺灣對日本之進出口狀況

Table 8. Trade with Japan



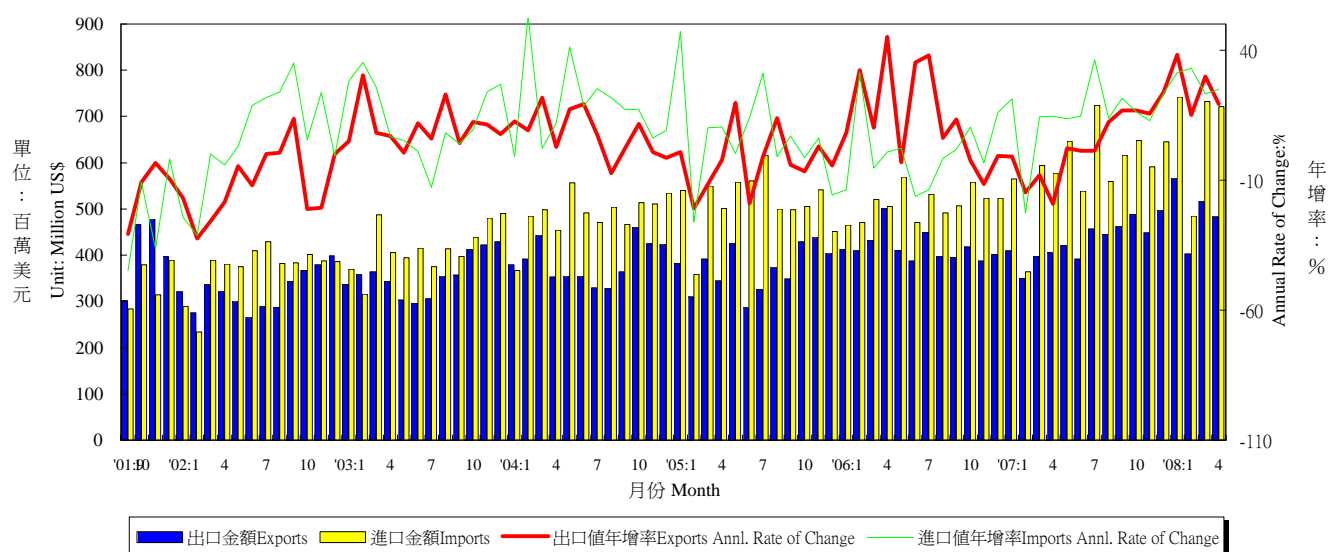
年與月 Year & Month	出口值 Exports			進口值 Imports			出入超 Trade Balance	貿易總額 Total Trade Amount	
	金額 (百萬美元) Amount (Mil. US\$)	年增率 Annual rate of change (%)	份額 Export share (%)	金額 (百萬美元) Amount (Mil. US\$)	年增率 Annual rate of change (%)	份額 Export share (%)	金額 (百萬美元) Amount (Mil. US\$)	金額 (百萬美元) Amount (Mil. US\$)	年增率 Annual rate of change (%)
1996	13,659	3.82	11.62	27,493	-9.16	25.96	-13,834	41,152	-5.23
1997	11,696	-14.37	9.42	29,022	5.56	25.25	-17,326	40,718	-1.05
1998	9,439	-19.30	8.38	27,060	-6.76	25.71	-17,621	36,498	-10.36
1999	12,043	27.59	9.73	30,637	13.22	27.55	-18,594	42,680	16.94
2000	16,887	40.23	11.11	38,622	26.06	27.44	-21,735	55,509	30.06
2001	13,024	-22.87	10.31	25,933	-32.85	24.02	-12,909	38,958	-29.82
2002	12,368	-5.04	9.14	27,363	5.51	24.16	-14,995	39,731	1.99
2003	12,430	0.50	8.25	32,720	19.57	25.56	-20,290	45,149	13.64
2004	13,808	11.09	7.57	43,718	33.61	25.91	-29,910	57,526	27.41
2005	15,111	9.43	7.62	46,053	5.34	25.22	-30,943	61,164	6.32
2006	16,300	7.87	7.28	46,284	0.50	22.83	-29,984	62,585	2.32
2007	15,934	-2.25	6.46	45,937	-0.75	20.95	-30,003	61,870	-1.14
2007 5	1,219	-3.14	6.22	3,765	-5.03	20.71	-2,546	4,984	-4.57
6	1,248	-4.38	6.21	3,746	-3.45	20.07	-2,498	4,994	-3.69
7	1,291	-7.82	6.10	4,261	1.11	20.55	-2,970	5,552	-1.12
8	1,249	-6.72	5.86	3,763	0.67	20.83	-2,514	5,012	-1.28
9	1,319	-10.83	5.94	3,980	7.50	20.89	-2,661	5,300	2.27
10	1,321	-6.84	5.82	4,028	0.47	20.98	-2,707	5,349	-1.44
11	1,254	-10.18	5.74	3,703	-6.70	21.06	-2,449	4,958	-7.60
12	1,530	6.05	6.52	4,198	14.49	19.75	-2,668	5,728	12.11
2008 1	1,369	-5.35	6.18	4,216	20.15	20.45	-2,847	5,585	12.71
2	1,182	0.35	6.70	3,414	18.28	21.40	-2,231	4,596	13.08
3	1,584	3.20	6.53	4,863	21.35	20.19	-3,279	6,447	16.33
4	1,500	11.67	6.64	4,338	6.08	20.09	-2,839	5,838	7.46
1-4	5,635	2.41	6.51	16,831	16.14	20.53	-11,196	22,465	12.36

資料來源：財政部統計處，臺灣地區進出口貿易統計月報。

Source : Dept. of Statistics, Ministry of Finance, "Preliminary Statistics of Export & Import."

表九：臺灣對德國之進出口狀況

Table 9. Trade with Germany



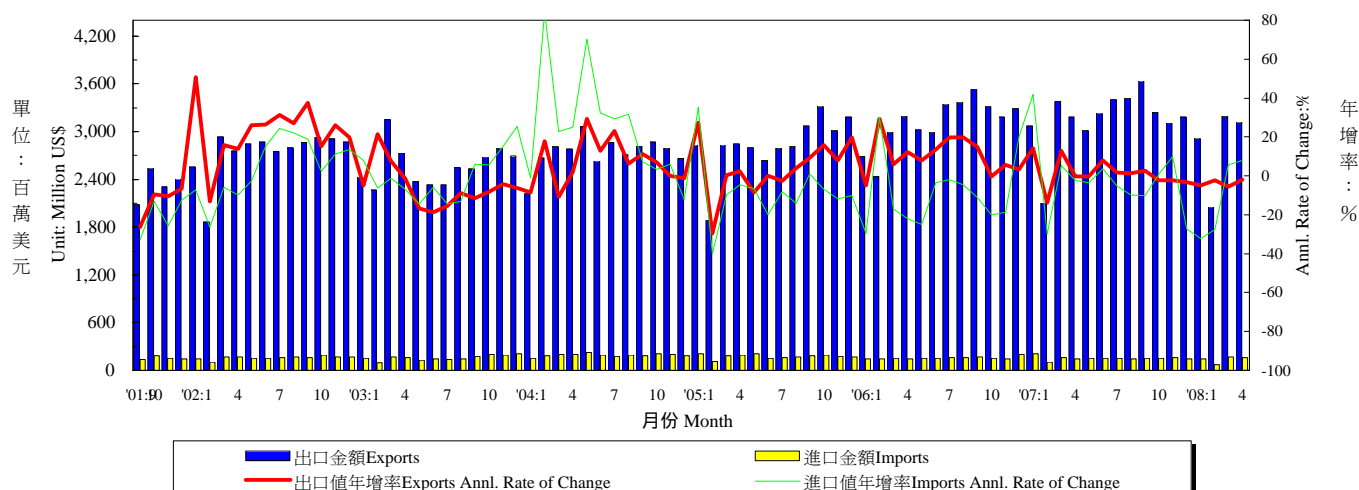
年與月 Year & Month	出口值 Exports			進口值 Imports			出入超 Trade Balance	貿易總額 Total Trade Amount	
	金額 (百萬美元) Amount (Mil. US\$)	年增率 Annual rate of change (%)	份額 Export share (%)	金額 (百萬美元) Amount (Mil. US\$)	年增率 Annual rate of change (%)	份額 Export share (%)	金額 (百萬美元) Amount (Mil. US\$)	金額 (百萬美元) Amount (Mil. US\$)	年增率 Annual rate of change (%)
1996	3,644	-5.08	3.10	5,023	-11.61	4.74	-1,379	8,667	-8.98
1997	3,691	1.27	2.97	5,369	6.88	4.67	-1,679	9,060	4.53
1998	4,107	11.29	3.65	5,170	-3.70	4.91	-1,063	9,278	2.40
1999	4,099	-0.21	3.31	5,332	3.12	4.79	-1,233	9,430	1.65
2000	4,936	20.44	3.25	5,579	4.63	3.96	-643	10,515	11.50
2001	4,537	-8.10	3.59	4,274	-23.38	3.96	262	8,811	-16.21
2002	3,886	-14.33	2.87	4,448	4.07	3.93	-562	8,335	-5.40
2003	4,286	10.27	2.85	4,986	12.09	3.90	-701	9,272	11.24
2004	4,607	7.51	2.53	5,852	17.36	3.47	-1,245	10,459	12.81
2005	4,463	-3.13	2.25	6,180	5.61	3.38	-1,717	10,643	1.76
2006	5,007	12.19	2.24	6,135	-0.73	3.03	-1,128	11,142	4.69
2007	5,175	3.35	2.10	7,070	15.24	3.22	-1,895	12,245	9.90
2007 5	421	2.35	2.15	647	13.60	3.56	-226	1,068	8.88
6	392	1.20	1.95	538	14.51	2.89	-146	931	8.49
7	456	1.38	2.15	724	36.18	3.49	-268	1,180	20.22
8	446	12.28	2.09	559	13.78	3.09	-113	1,004	13.11
9	463	16.79	2.08	616	21.55	3.23	-153	1,079	19.46
10	489	16.71	2.15	649	16.28	3.38	-160	1,137	16.47
11	449	15.51	2.05	591	12.80	3.36	-142	1,039	13.95
12	497	23.97	2.12	645	23.42	3.03	-148	1,142	23.66
2008 1	566	38.25	2.56	742	31.33	3.60	-176	1,308	34.24
2	403	15.14	2.28	485	33.05	3.04	-82	888	24.28
3	516	29.86	2.13	732	23.25	3.04	-216	1,248	25.90
4	484	19.33	2.14	722	24.92	3.34	-238	1,205	22.62
1-4	1,969	26.03	2.28	2,681	27.58	3.26	-713	4,650	26.92

資料來源：財政部統計處，臺灣地區進出口貿易統計月報

Source : Dept. of Statistics, Ministry of Finance, "Preliminary Statistics of Export & Import."

表十：臺灣對香港之進出口狀況

Table 10. Trade with Hong Kong



年與月 Year & Month	出口值 Exports			進口值 Imports			出入超 Trade Balance	貿易總額 Total Trade Amount	
	金額 (百萬美元) Amount (Mil. US\$)	年增率 Annual rate of change (%)	份額 Export share (%)	金額 (百萬美元) Amount (Mil. US\$)	年增率 Annual rate of change (%)	份額 Export share (%)	金額 (百萬美元) Amount (Mil. US\$)	金額 (百萬美元) Amount (Mil. US\$)	年增率 Annual rate of change (%)
1996	26,788	2.61	22.78	1,705	-7.50	1.61	25,083	28,492	1.94
1997	28,688	7.09	23.10	1,996	17.10	1.74	26,692	30,684	7.69
1998	25,398	-11.47	22.56	2,076	4.01	1.97	23,322	27,474	-10.46
1999	26,825	5.62	21.68	2,224	7.11	2.00	24,602	29,049	5.73
2000	32,742	22.06	21.55	2,364	6.32	1.68	30,378	35,106	20.85
2001	28,713	-12.31	22.73	2,052	-13.22	1.90	26,661	30,764	-12.37
2002	32,960	14.79	24.36	1,915	-6.66	1.69	31,045	34,875	13.36
2003	30,868	-6.35	20.50	1,917	0.12	1.50	28,951	32,785	-5.99
2004	32,896	6.57	18.04	2,309	20.44	1.37	30,587	35,205	7.38
2005	34,036	3.46	17.15	2,110	-8.64	1.16	31,926	36,145	2.67
2006	37,381	9.83	16.69	1,881	-10.86	0.93	35,501	39,262	8.62
2007	37,980	1.60	15.40	1,825	-2.96	0.83	36,155	39,805	1.38
2007 4	3,188	-0.25	16.08	146	-2.15	0.79	3,043	3,334	-0.33
5	3,017	-0.27	15.41	151	-3.44	0.83	2,866	3,168	-0.43
6	3,236	8.09	16.12	154	3.67	0.83	3,082	3,390	7.88
7	3,404	1.67	16.07	151	-5.20	0.73	3,253	3,555	1.36
8	3,417	1.28	16.03	142	-9.67	0.79	3,275	3,560	0.79
9	3,635	2.82	16.36	151	-10.08	0.79	3,484	3,785	2.24
10	3,243	-2.16	14.29	155	0.59	0.81	3,087	3,398	-2.04
11	3,108	-2.37	14.21	160	10.03	0.91	2,948	3,268	-1.83
12	3,183	-3.35	13.56	144	-27.37	0.68	3,038	3,327	-4.71
2008 1	2,922	-5.00	13.20	142	-32.06	0.69	2,780	3,063	-6.72
2	2,051	-2.20	11.61	73	-27.72	0.46	1,978	2,124	-3.37
3	3,190	-5.55	13.15	169	5.70	0.70	3,021	3,359	-5.04
4	3,125	-1.99	13.83	157	8.04	0.73	2,968	3,282	-1.55
1-4	11,287	-3.84	12.95	541	-12.05	0.64	10,746	11,829	-4.25

資料來源：財政部統計處，臺灣地區進出口貿易統計月報。

Source : Dept. of Statistics, Ministry of Finance, "Preliminary Statistics of Export & Import."

表十一：兩岸經貿

Table 11. Trade Across the Taiwan Straits

年與月 Year & Month	經由香港之轉口貿易 Trade through H. K.						出入超金額 百萬美元 Net Export Amount (Mil.US\$)	匯率 人民幣兌 一美元 Exchange Rate (RMB/US\$)	大陸 消費者物價 總指數 年增率 China's Consumer Price Index
	出口 Exports			進口 Imports					
	金額 (百萬美元) Amount (Mil. US\$)	年增率 Annual rate of change (%)	份額 Export share (%)	金額 (百萬美元) Amount (Mil. US\$)	年增率 Annual rate of change (%)	份額 Export share (%)			
1996	9,718	-1.67	8.26	1,582	0.52	1.49	8,135	8.30	8.33
1997	9,715	-0.03	7.82	1,744	10.20	1.52	7,971	8.29	2.81
1998	8,364	-13.91	7.43	1,655	-5.10	1.57	6,709	8.28	-0.77
1999	8,175	-2.26	6.61	1,628	-1.62	1.46	6,547	8.28	-1.40
2000	9,593	17.35	6.31	1,981	21.64	1.41	7,613	8.28	0.35
2001	8,812	-8.15	6.98	1,693	-14.50	1.57	7,118	8.28	0.73
2002	10,312	17.03	7.62	1,708	0.87	1.51	8,604	8.28	-0.80
2003	11,789	14.33	7.83	2,161	26.52	1.69	9,628	8.28	1.17
2004	14,766	25.25	8.10	2,486	15.05	1.47	12,279	8.28	3.90
2005	17,055	15.51	8.60	2,661	7.02	1.46	14,395	8.19	1.82
2006	18,707	9.68	8.35	2,898	8.90	1.43	15,809	7.97	1.47
2007	21,213	13.40	8.60	2,929	1.07	1.34	18,284	7.61	4.77
2006 12	1,550	7.36	7.90	265	6.26	1.59	1,285	7.82	2.80
2007 1	1,517	5.22	7.67	255	4.36	1.42	1,262	7.79	2.20
2	1,231	3.93	8.26	179	-17.82	1.41	1,052	7.75	2.70
3	1,668	12.87	8.44	224	-7.05	1.28	1,444	7.74	3.30
4	1,630	8.45	8.22	239	5.38	1.30	1,391	7.73	3.00
5	1,693	14.47	8.65	278	22.51	1.53	1,415	7.67	3.40
6	1,790	15.68	8.92	221	-1.65	1.19	1,569	7.63	4.40
7	1,920	22.52	9.06	269	13.35	1.30	1,650	7.58	5.60
8	2,047	18.01	9.60	250	2.84	1.38	1,798	7.58	6.50
9	1,949	9.28	8.77	258	12.89	1.36	1,690	7.52	6.20
10	2,022	14.47	8.91	246	-9.60	1.28	1,776	7.50	6.50
11	1,969	17.77	9.00	263	-2.36	1.49	1,706	7.42	6.90
12	1,777	14.63	7.57	246	-7.18	1.16	1,531	7.37	6.50
2008 1	1,897	25.02	8.57	254	-0.53	1.23	1,643	7.25	7.10
2	1,261	2.44	7.14	175	-2.33	1.10	1,086	7.17	8.70
3	--	--	--	--	--	--	--	7.07	8.30
4	--	--	--	--	--	--	--	7.00	--
1-4	3,157	14.90	7.93	429	-1.28	1.17	2,729	7.21	7.90

資料來源：行政院大陸委員會，兩岸經濟統計月報。

Source : China Statistical Information and Consultancy Service Center. "China Monthly Review."